

Honor. Protect. Restore.

Building Resiliency in Uncertain Times

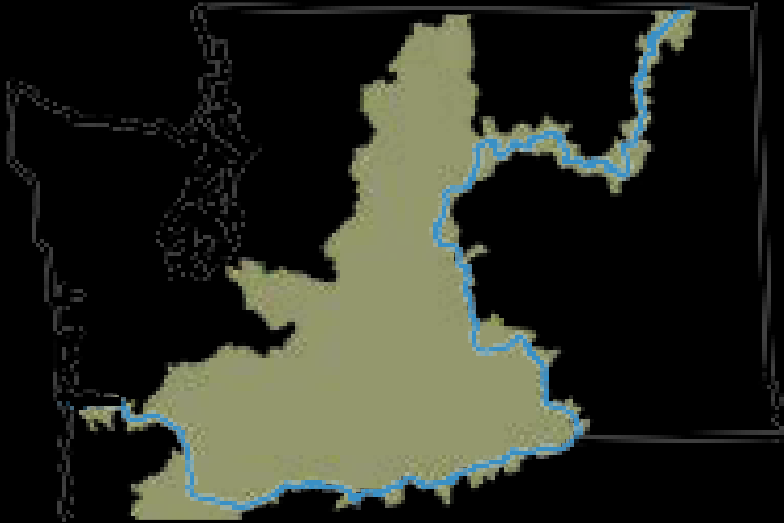





DAVID LINDLEY
COLUMBIA GORGE FISHERIES AND WATERSHED SYMPOSIUM
APRIL 21, 2026

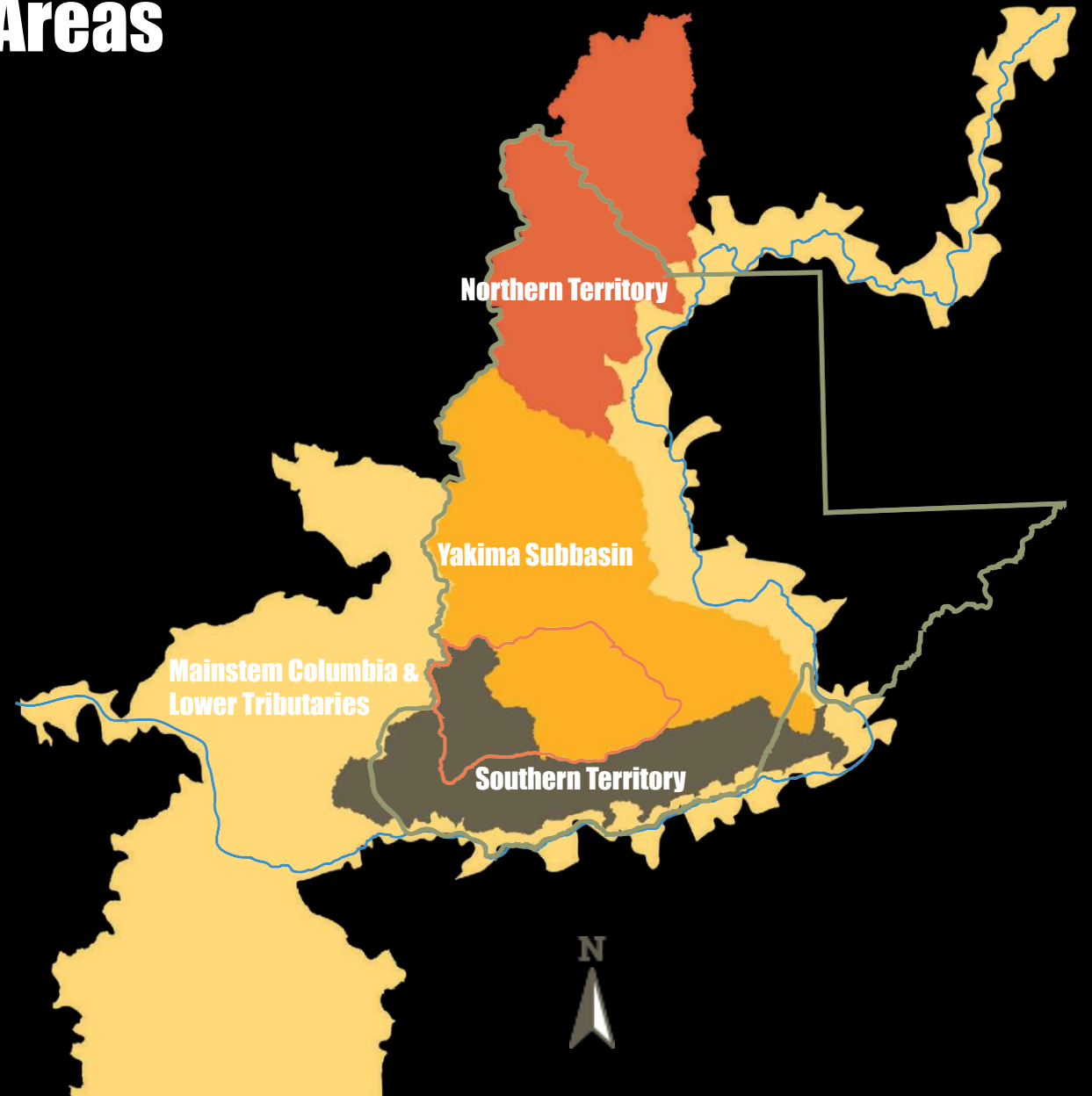
To honor, protect, and restore Nch'iWa'na (the Columbia River) its tributaries and its resources for the benefit of current and future generations of the Yakama people as reserved for them in the Treaty of 1855 (12 Stat 951).



Yakama Nation Fisheries Focal Areas



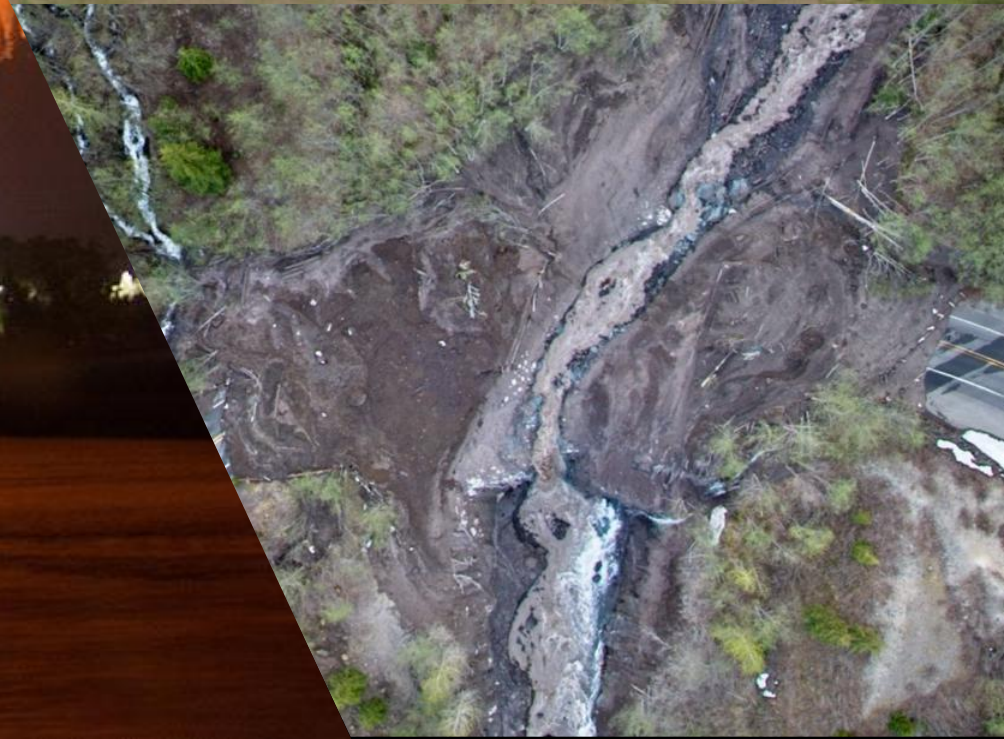
-  **Ceded Area**
-  **Yakama Nation Reservation**
-  **Columbia River**



A large school of salmon is swimming in a river, moving from the foreground towards the background. The water is dark and turbulent. In the foreground, there are rocks and tall grasses. The quote "Make it like it was" is overlaid in white text on the water.

“Make it like it was”

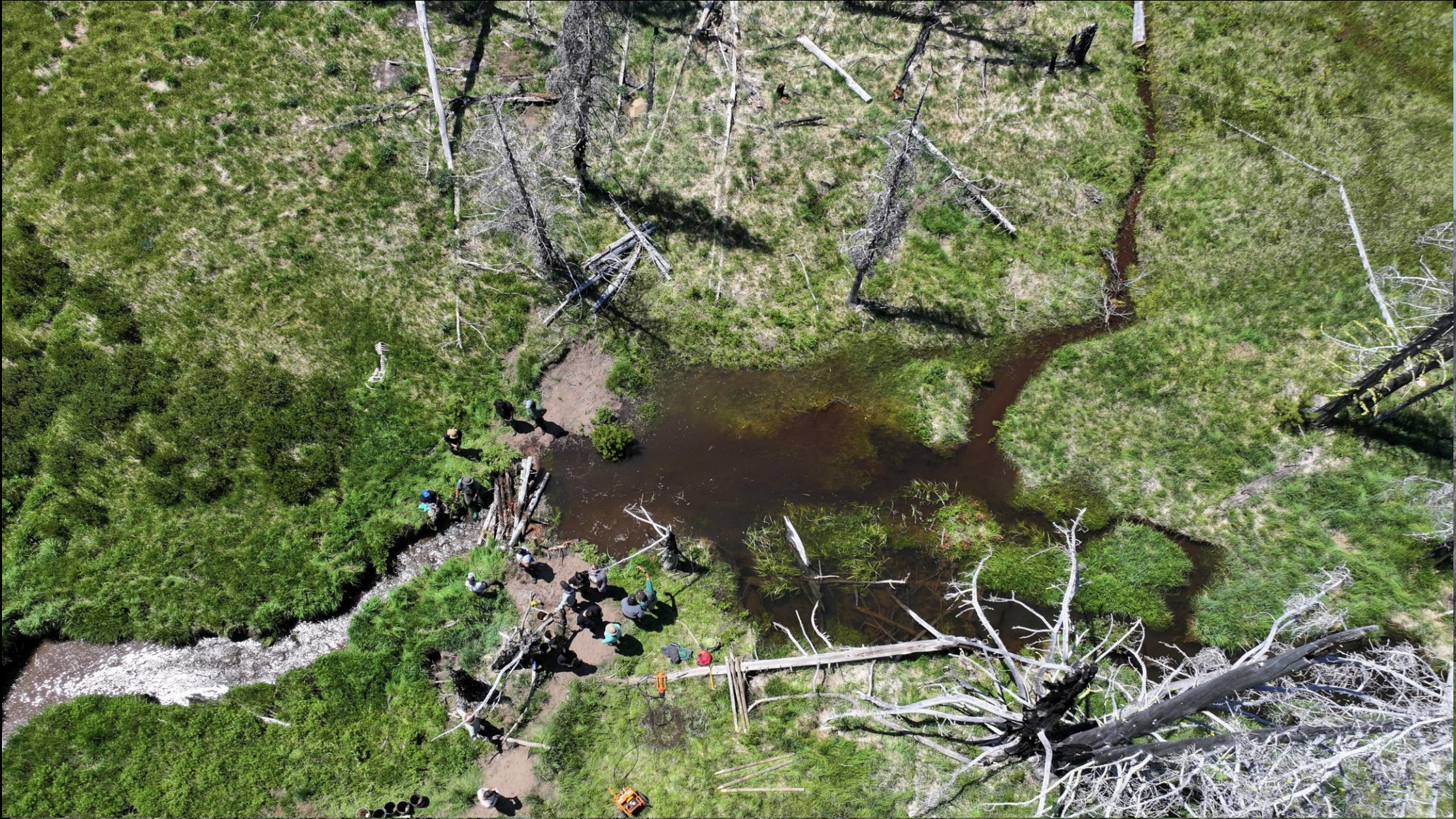
Bill Yallup, Sr.



Honor



Honor

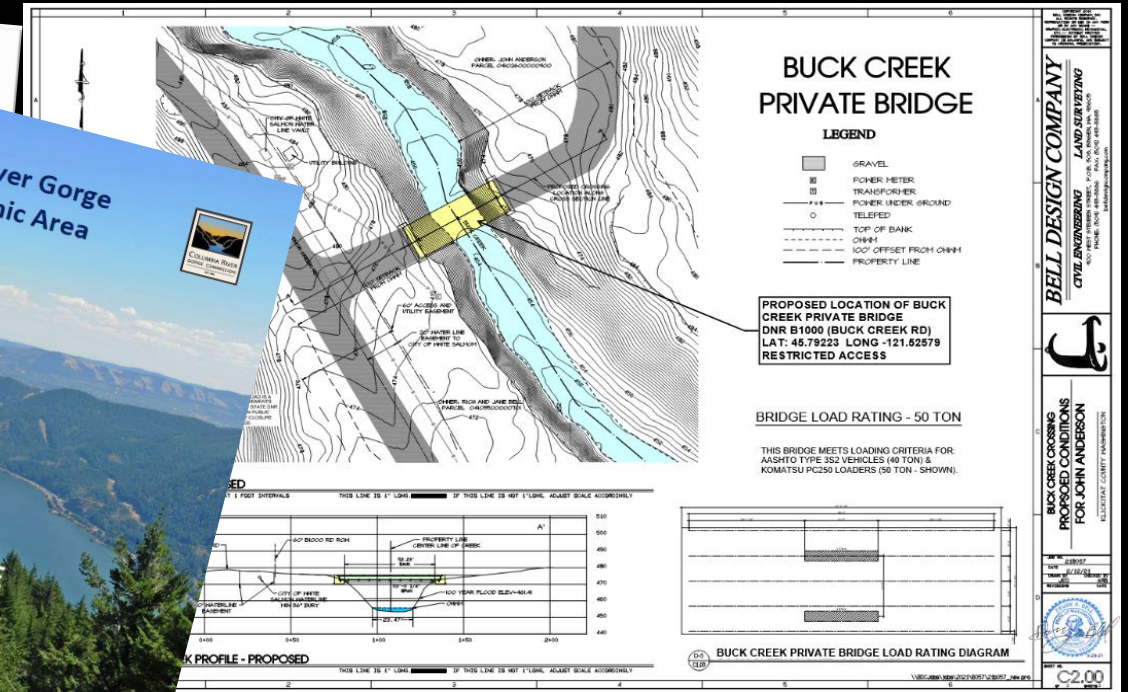
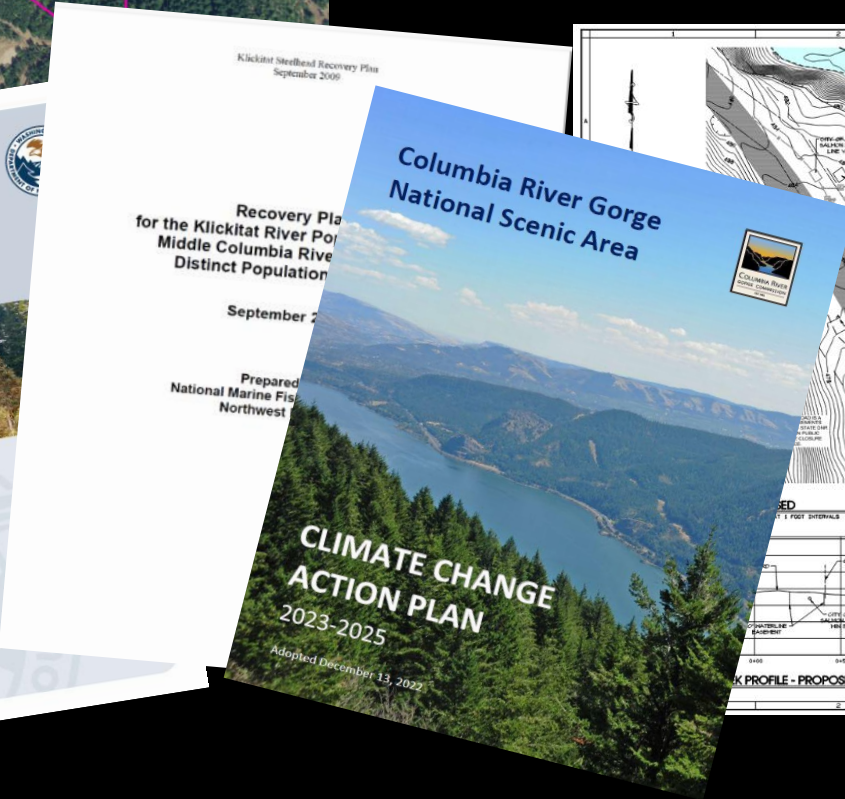
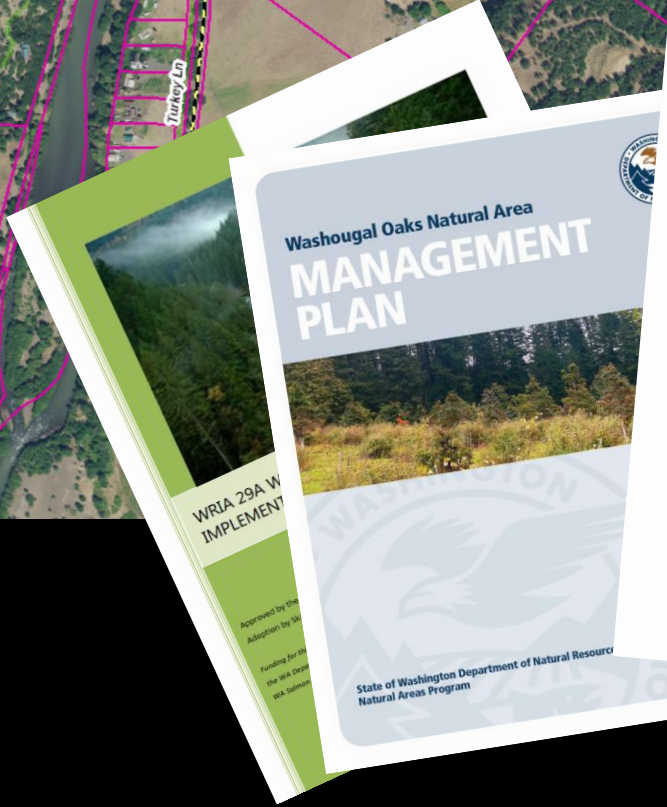
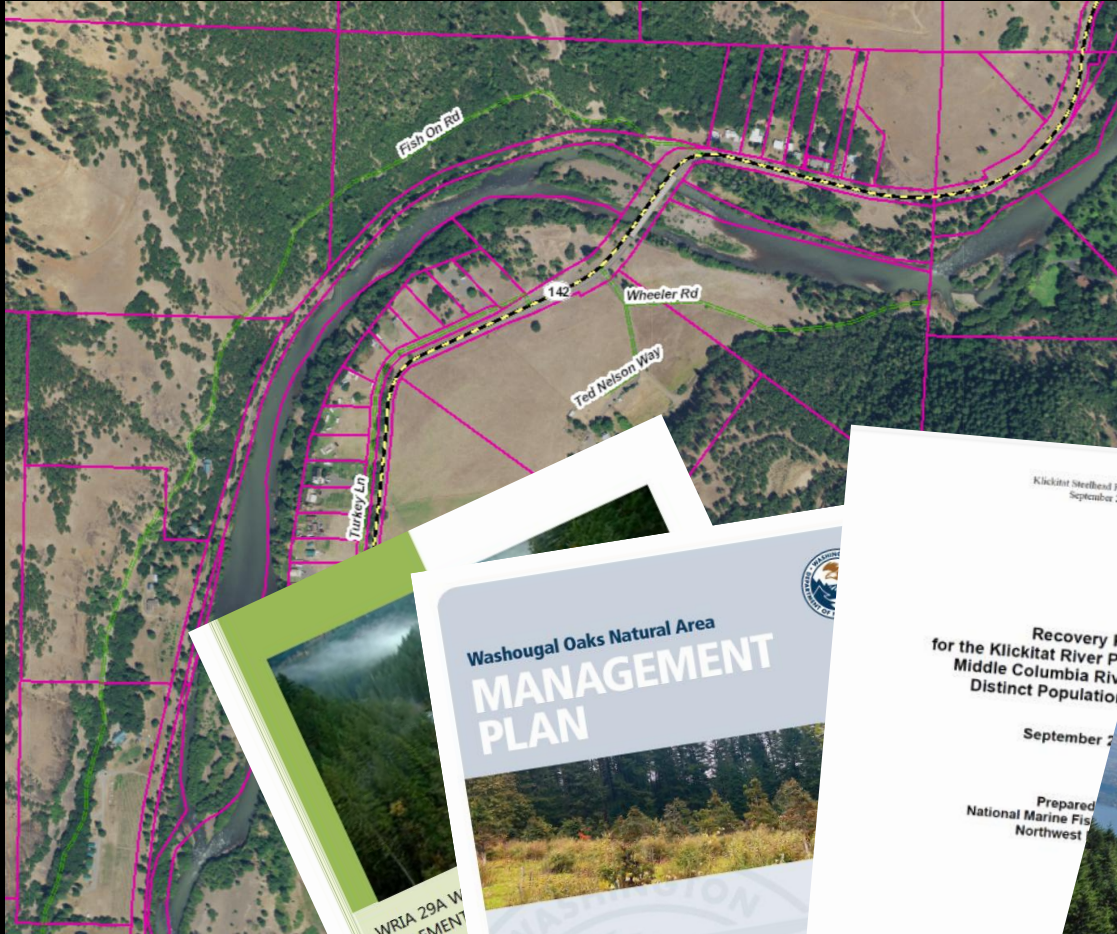


Honor



Honor

- Shoreline Master Program
- Critical Areas Ordinance
- Floodplain Ordinance
- SEPA Compliance
- Comprehensive Plans

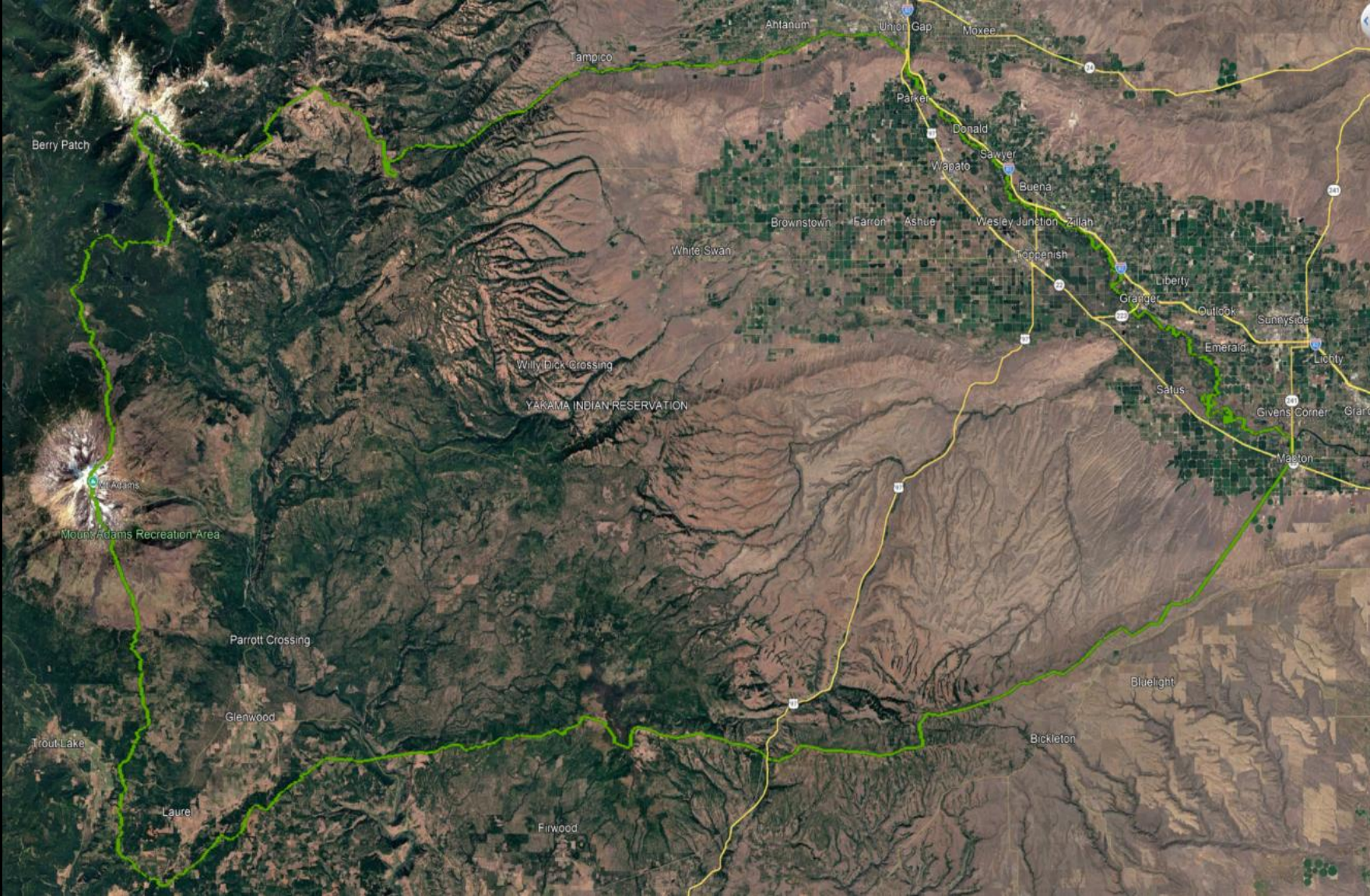


Protect

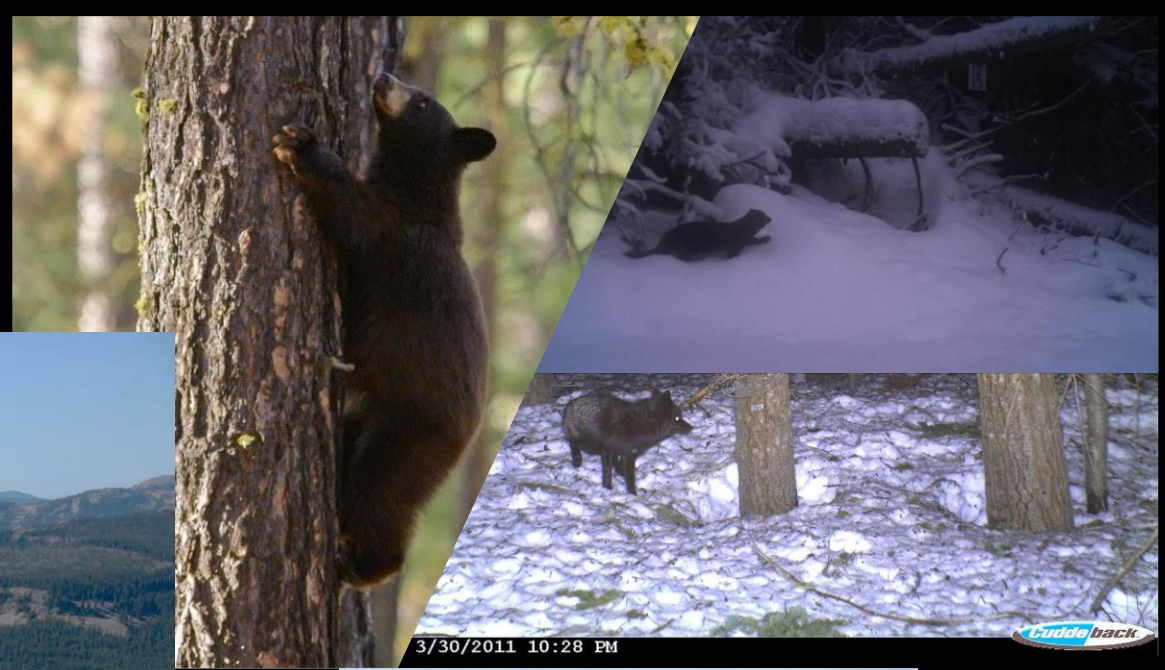
Yakama Nation DNR Trust Land Transfer “Return of Tract C Lands”



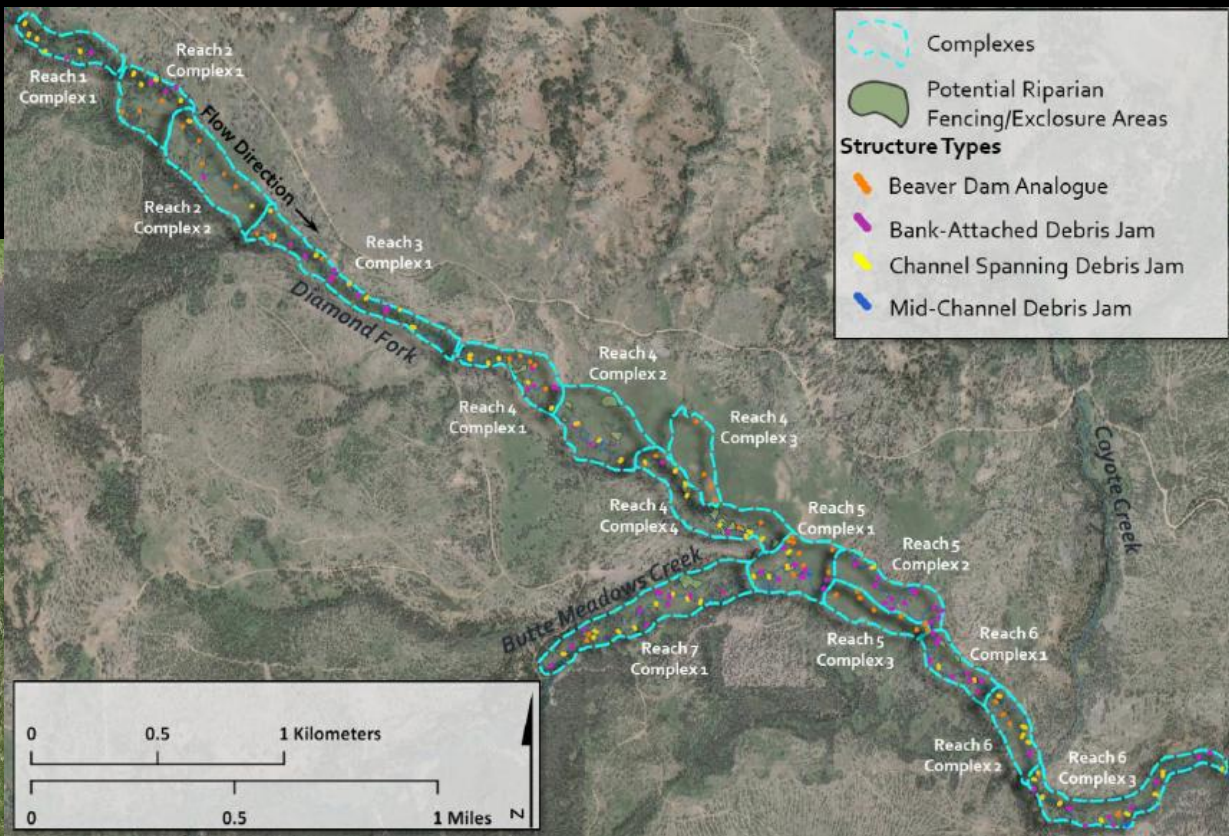
Protect



Protect

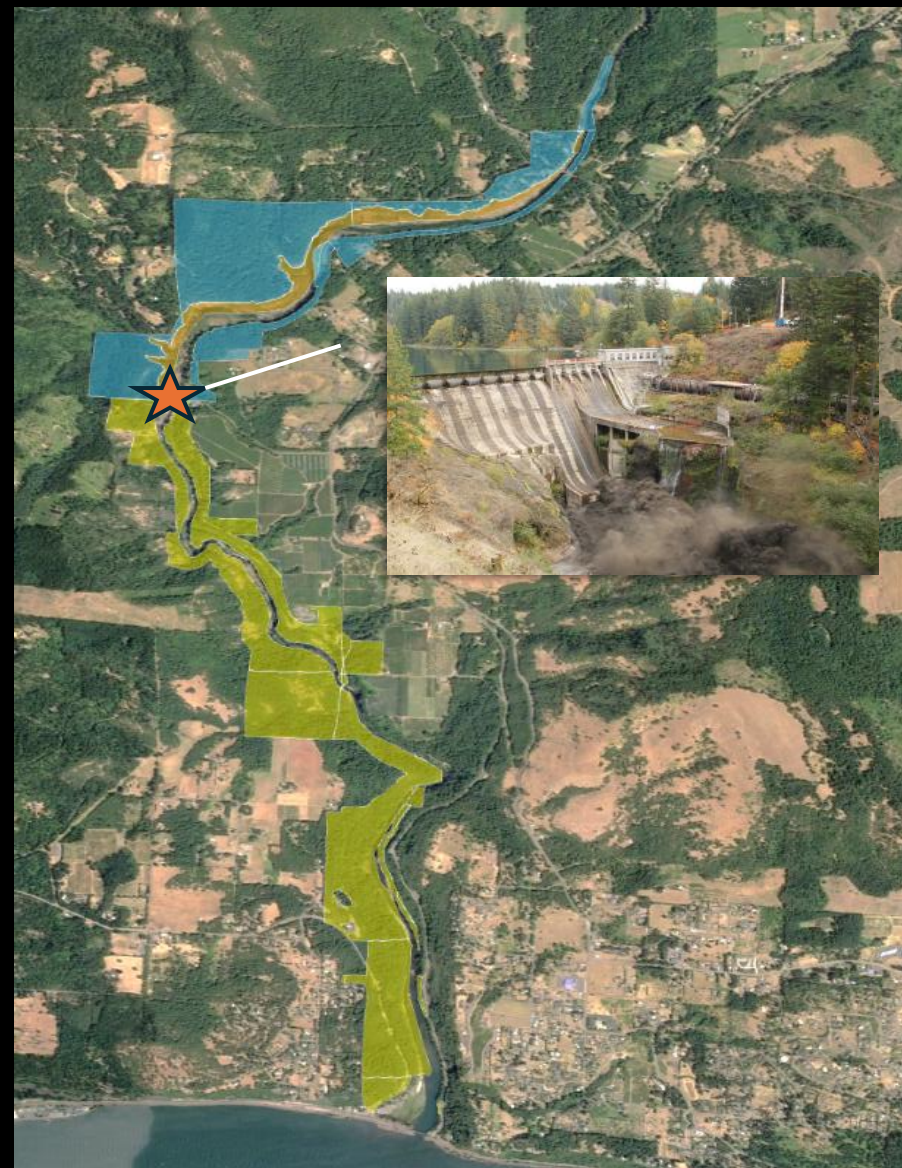




Protect



Protect

White Salmon River Conservation Lands Acquisition



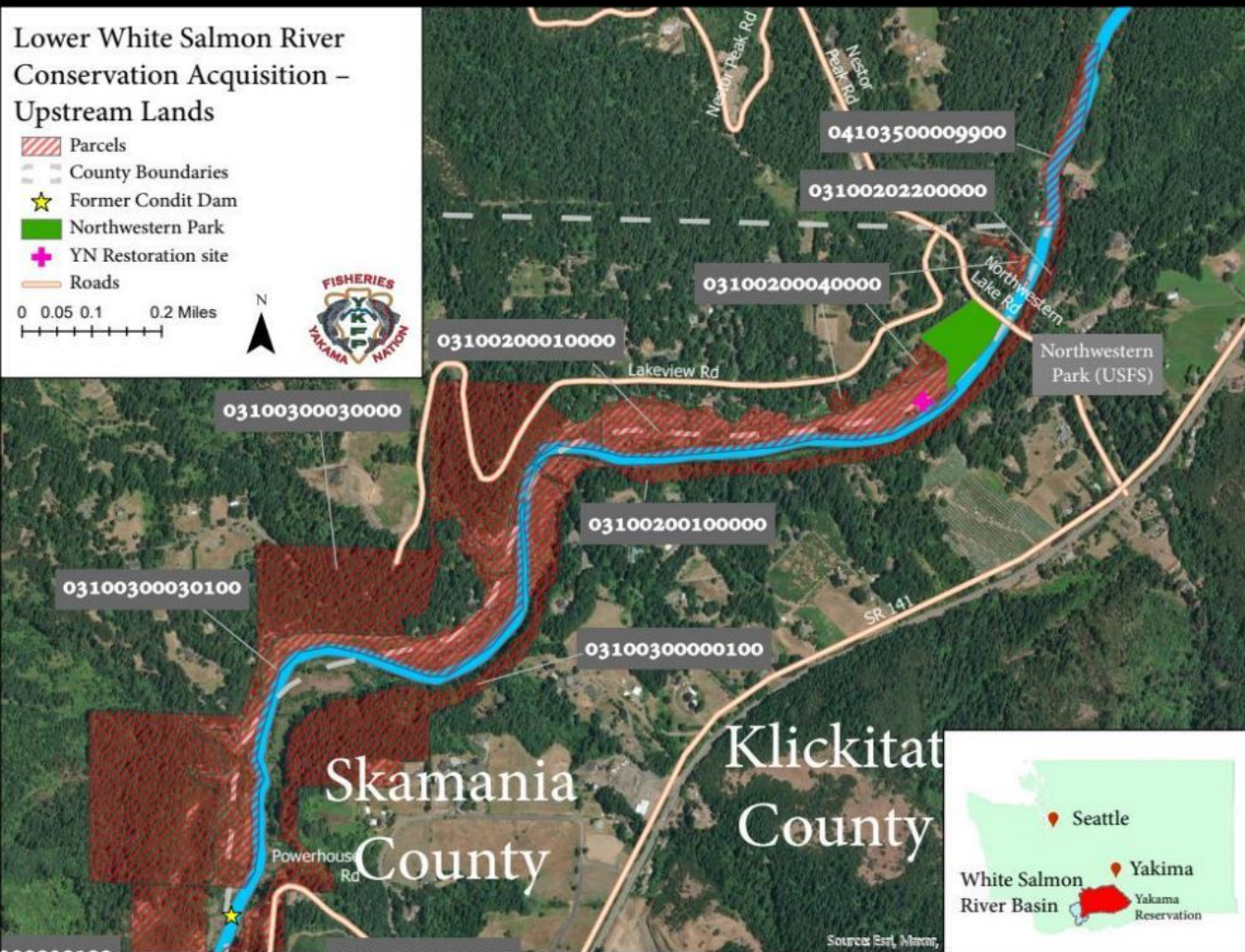
-  Above former Condit Dam
-  Below former Condit Dam

Protect

Lower White Salmon River Conservation Acquisition - Upstream Lands

-  Parcels
-  County Boundaries
-  Former Condit Dam
-  Northwestern Park
-  YN Restoration site
-  Roads

0 0.05 0.1 0.2 Miles

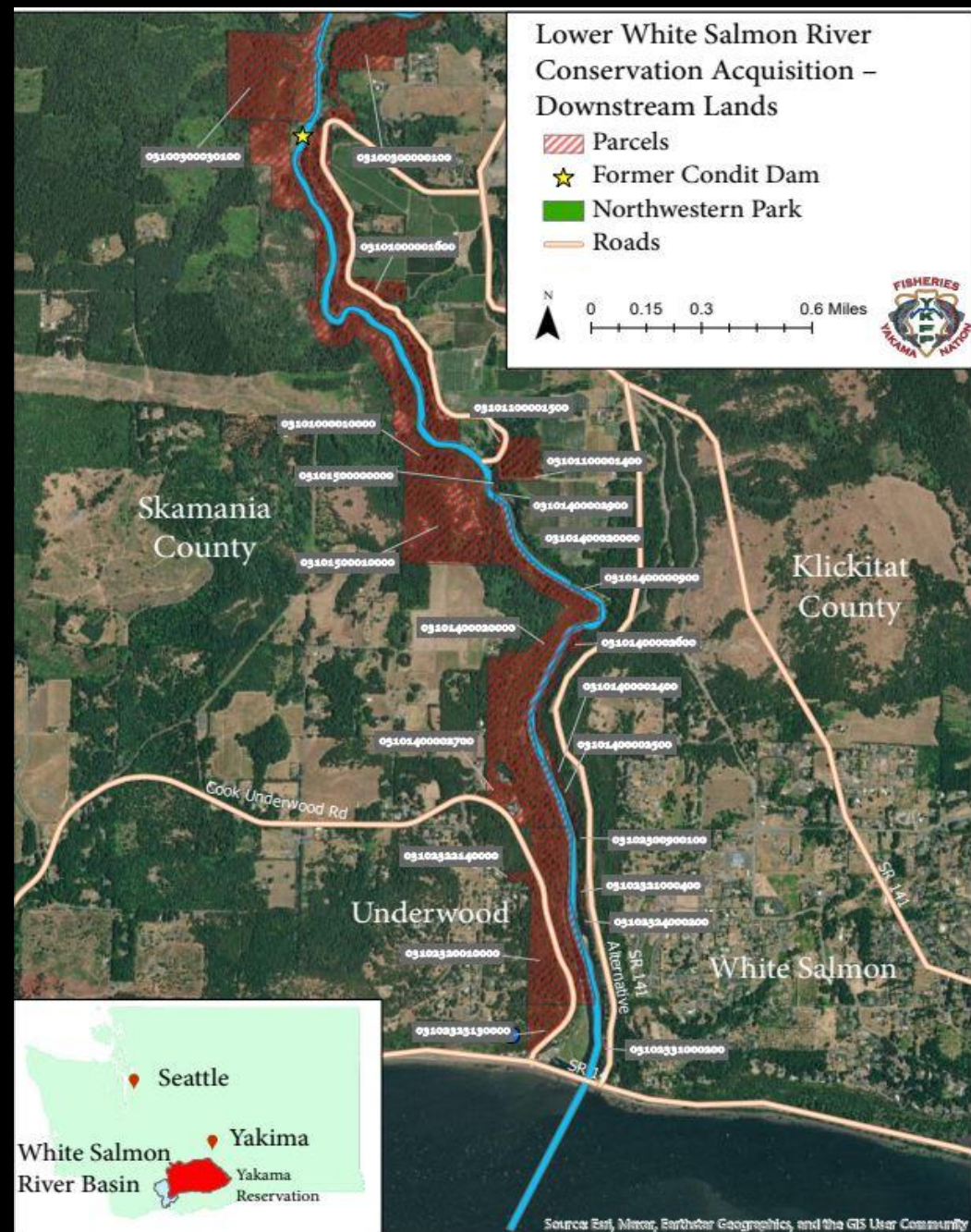


Source: Esri, Mapbox

Lower White Salmon River Conservation Acquisition - Downstream Lands

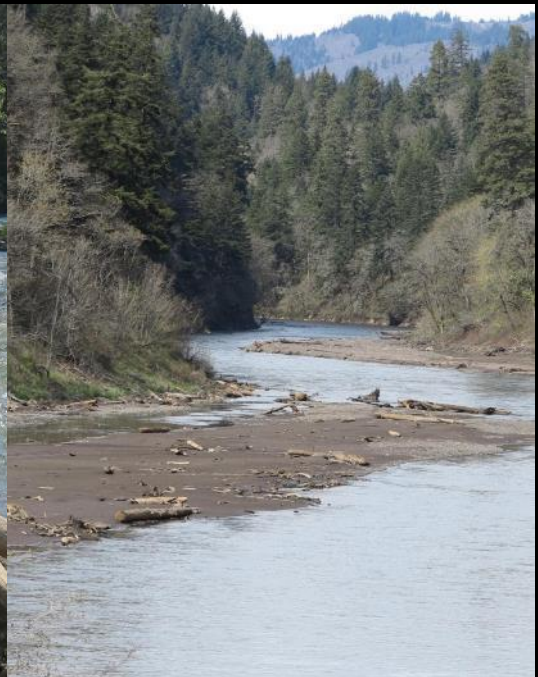
-  Parcels
-  Former Condit Dam
-  Northwestern Park
-  Roads

0 0.15 0.3 0.6 Miles



Source: Esri, Mapbox, Earthstar Geographics, and the GIS User Community

Protect



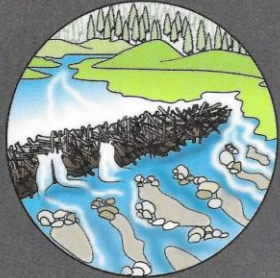
Protect



Restore

high calorie

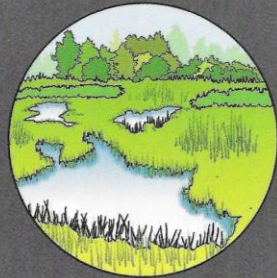
Key Strategies for Watershed Resilience



Protect cold water flows and cold water refuge areas



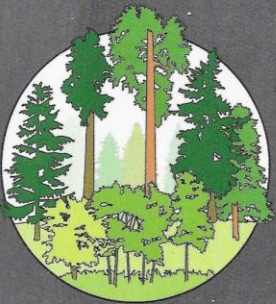
Restore and increase flows in tributaries



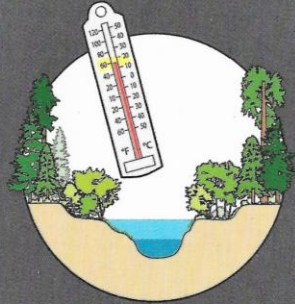
Protect off-channel, wetland, and estuary habitats



Restore incised channels and reconnect rivers and streams with their floodplains



Protect healthy vegetated stream corridors and upland forests



Restore stream corridors with greatest potential to lower water temperatures



high carbon



Restore

Walaluks Creek LTPBR



Restore



Restore

Walaluks Ck LTPBR As-built



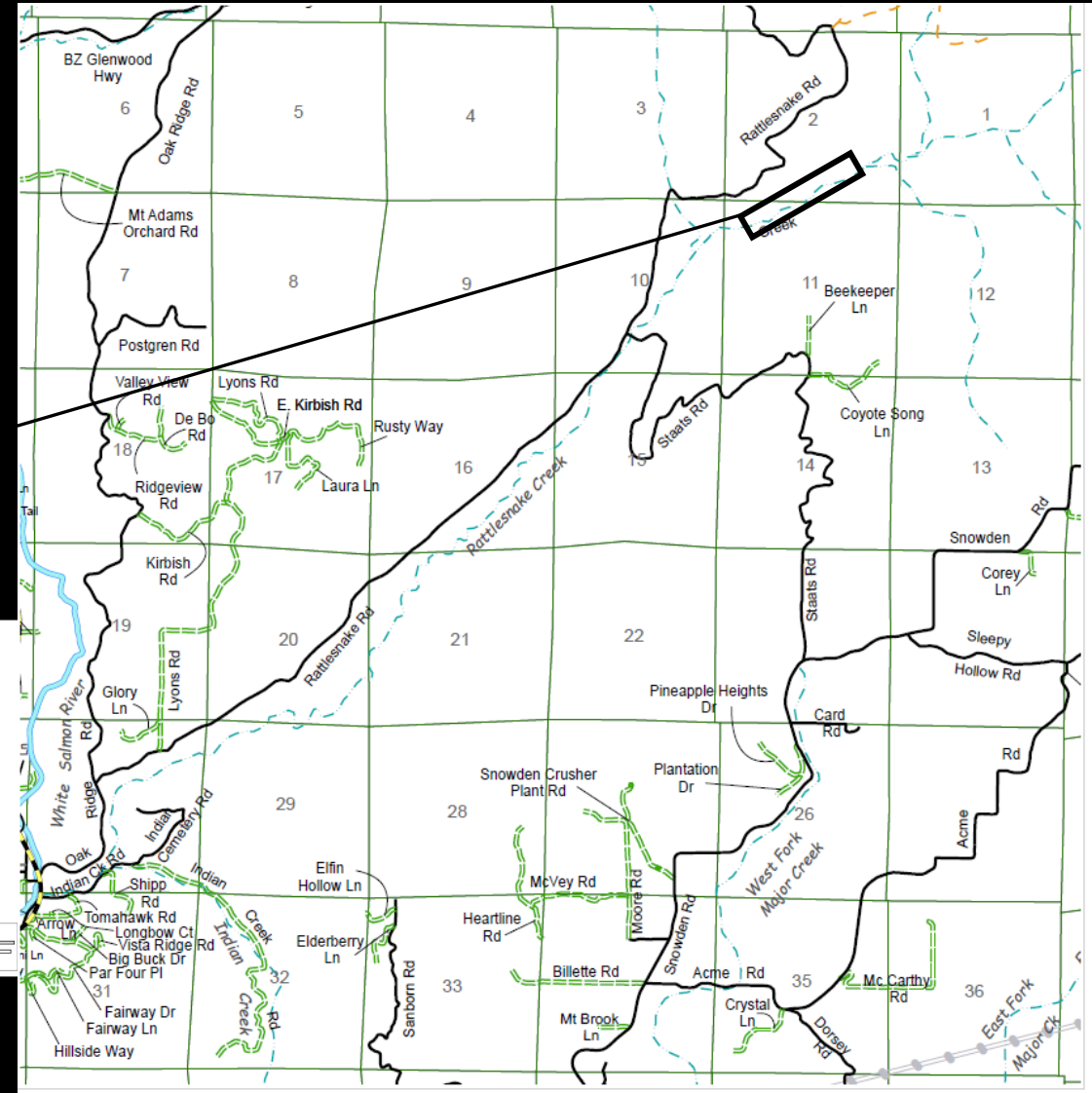
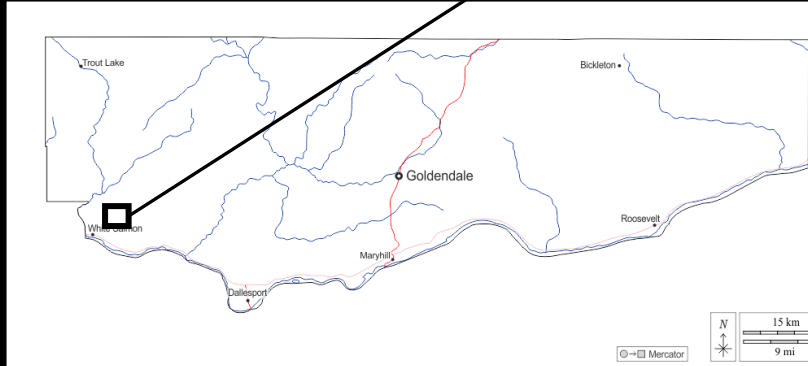
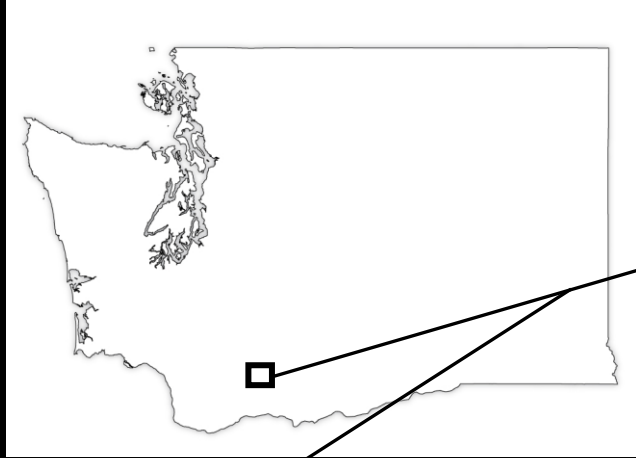
Legend

- Washington
- Rock Creek Basin
- Rock Creek
- Project Area
- Wood Placement (62)



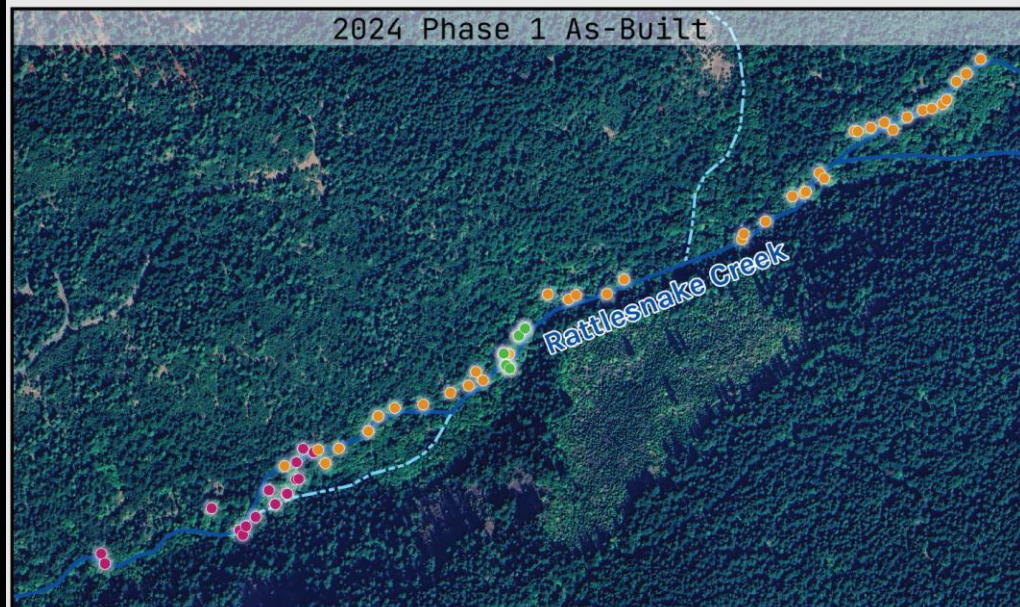
Restore

Upper Rattlesnake Ck Floodplain Enhancement



Restore

Upper Rattlesnake Ck Floodplain Enhancement



Phase 1 Overview

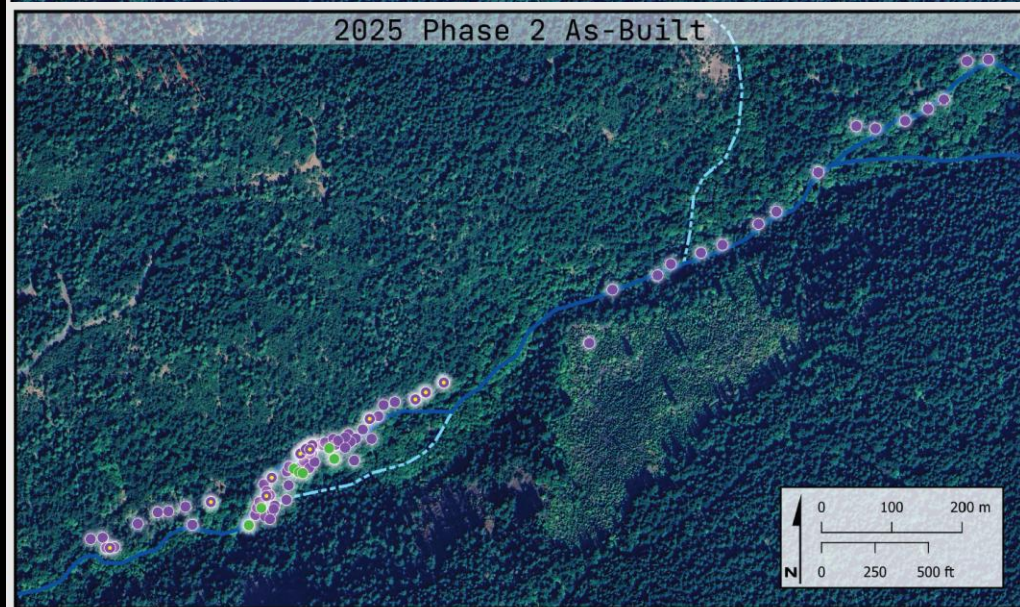
Total Structures: 60
Number of ALS: 39
Number of PALS: 16
Number of Rootwads: 5



PALS
Structure
(Channel
Spanning)



ALS
Structure
(Rootwad)



Phase 2 Overview

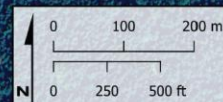
Total Structures: 90
Number of ALS: 75
Number of Rootwads: 15



ALS
Structure
(Rootwad)



ALS
Structure
(Wood Jam)





Restore

Upper Rattlesnake Ck Floodplain Enhancement



Restore



Restore

“reconnect the best restore the rest”



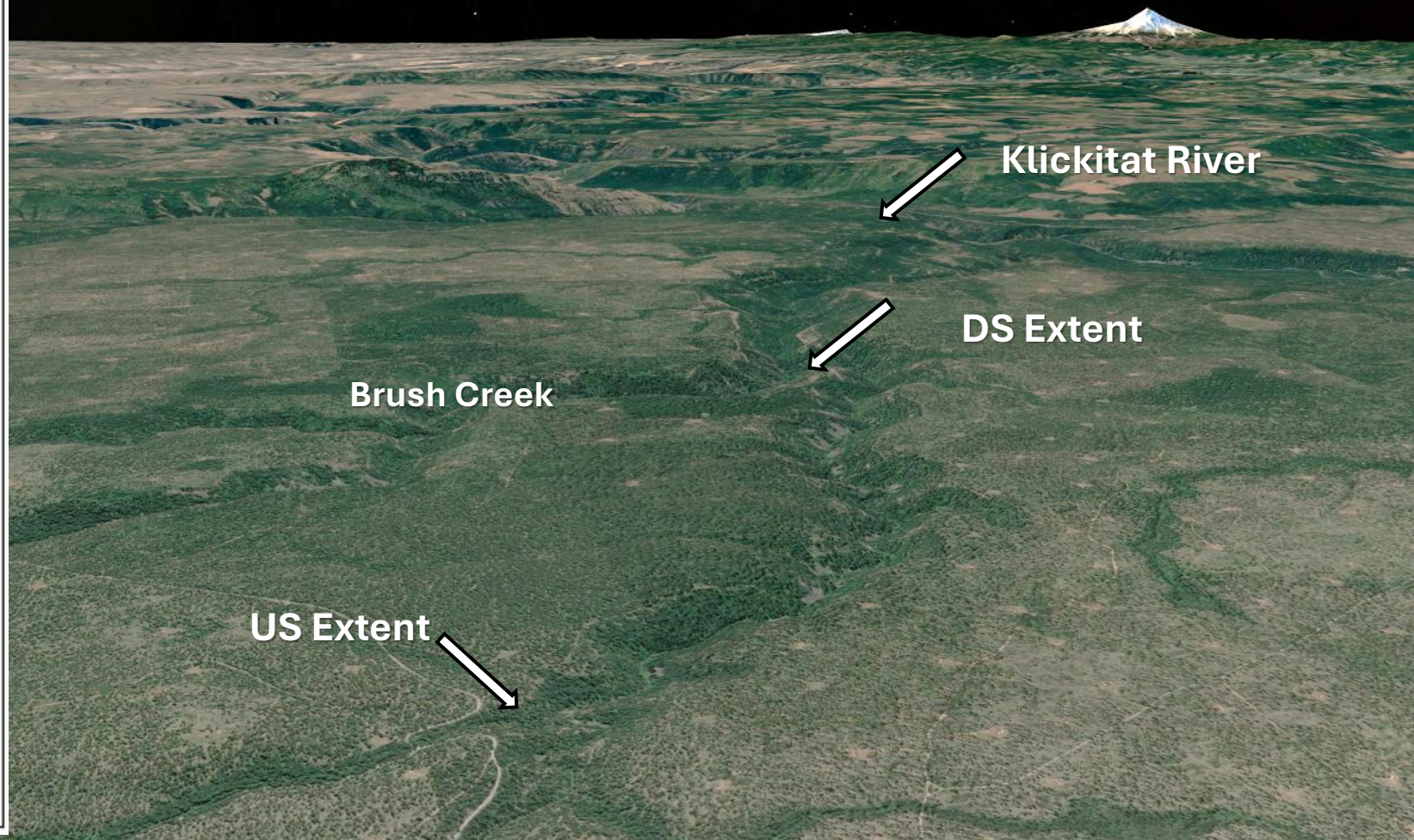
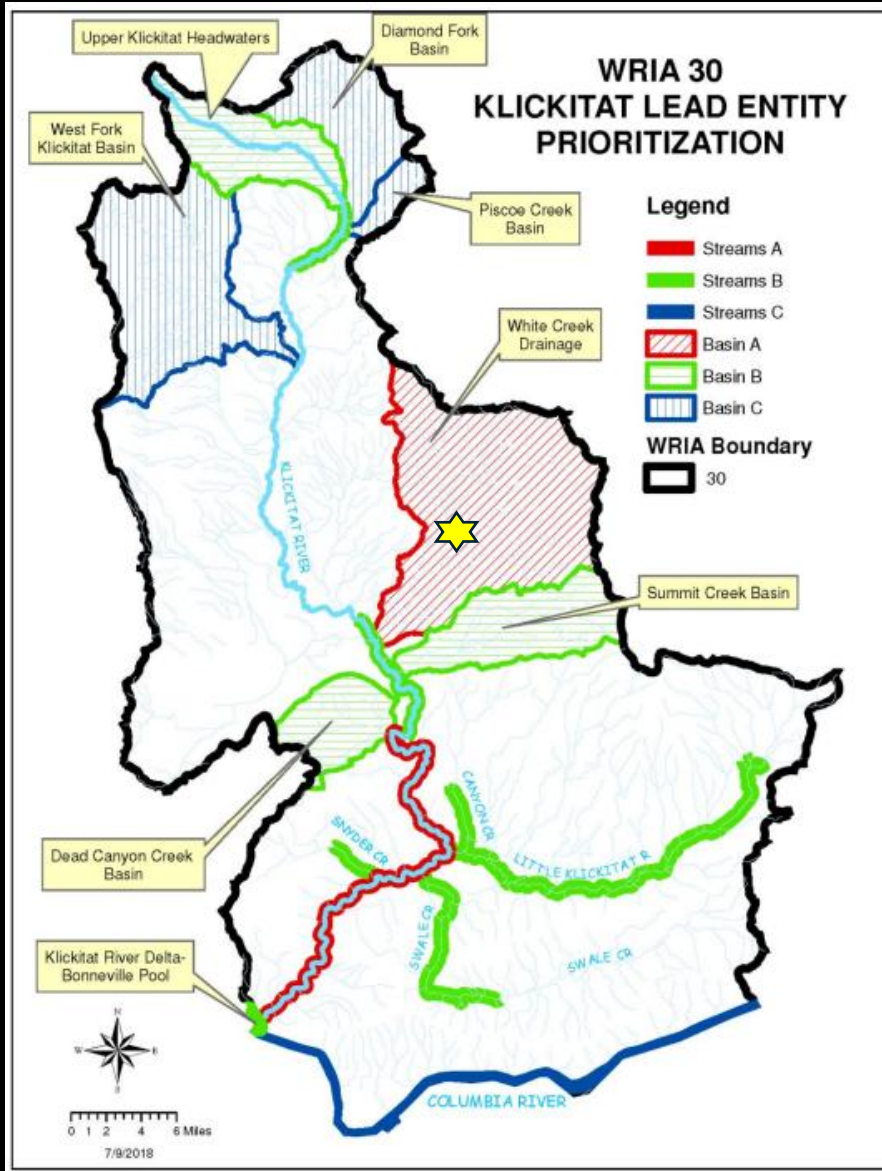
Brush Ck at 175 Rd

- Reconnect 3.5 miles of habitat
- Longitudinal Connectivity



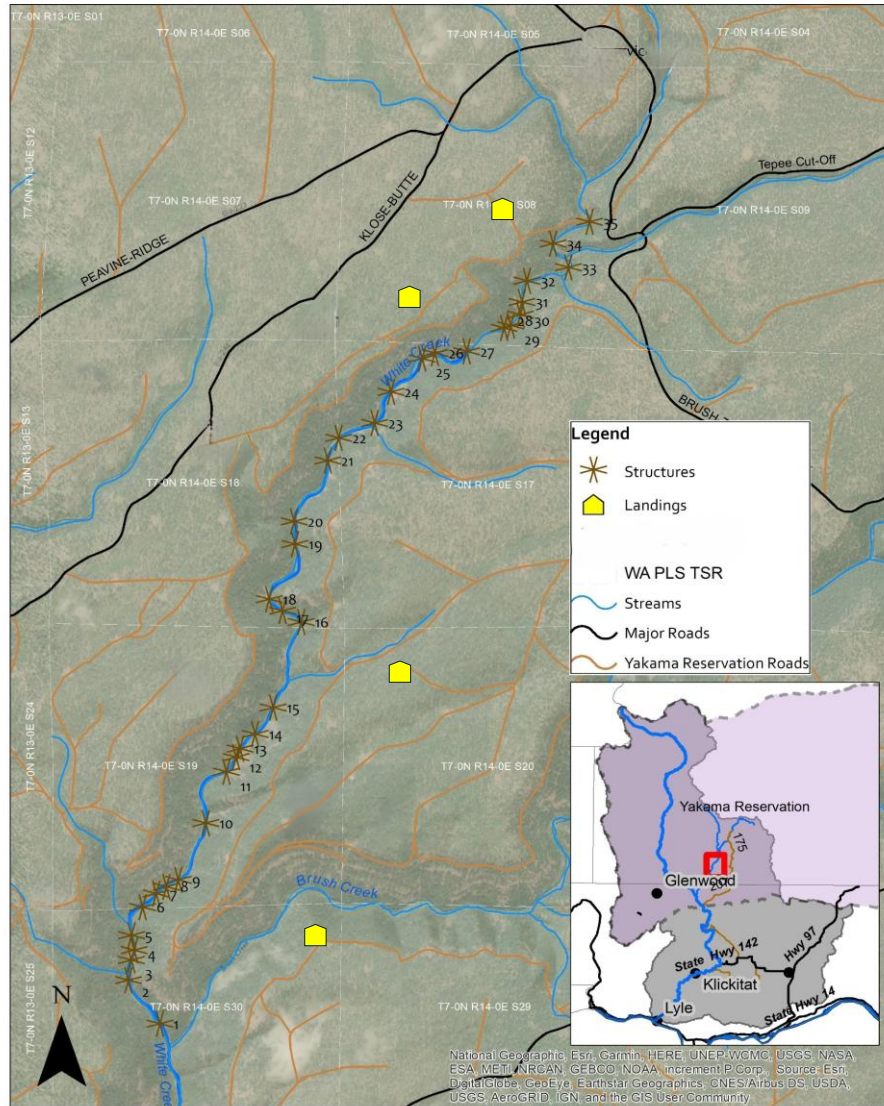
Restore

White Ck Wood Enrichment Phase 2



Restore

White Ck Wood Enrichment Phase 2



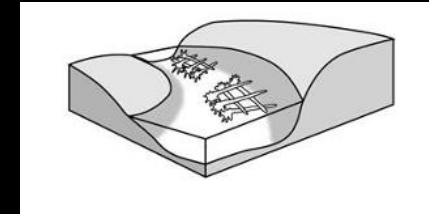
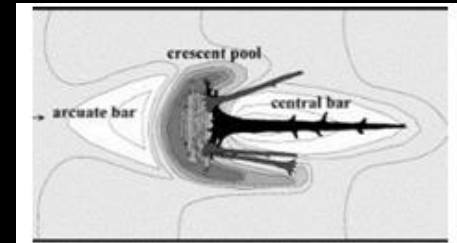
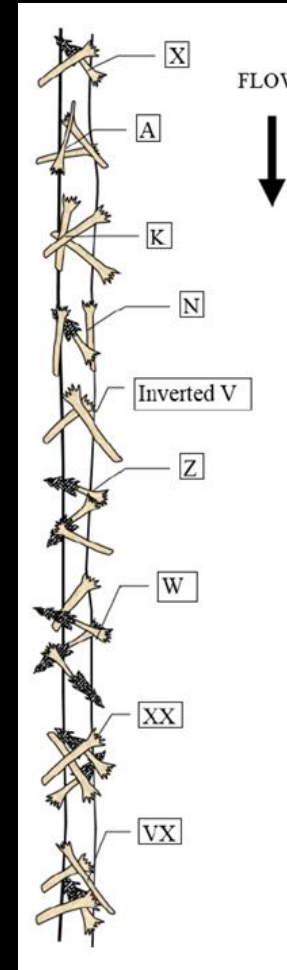
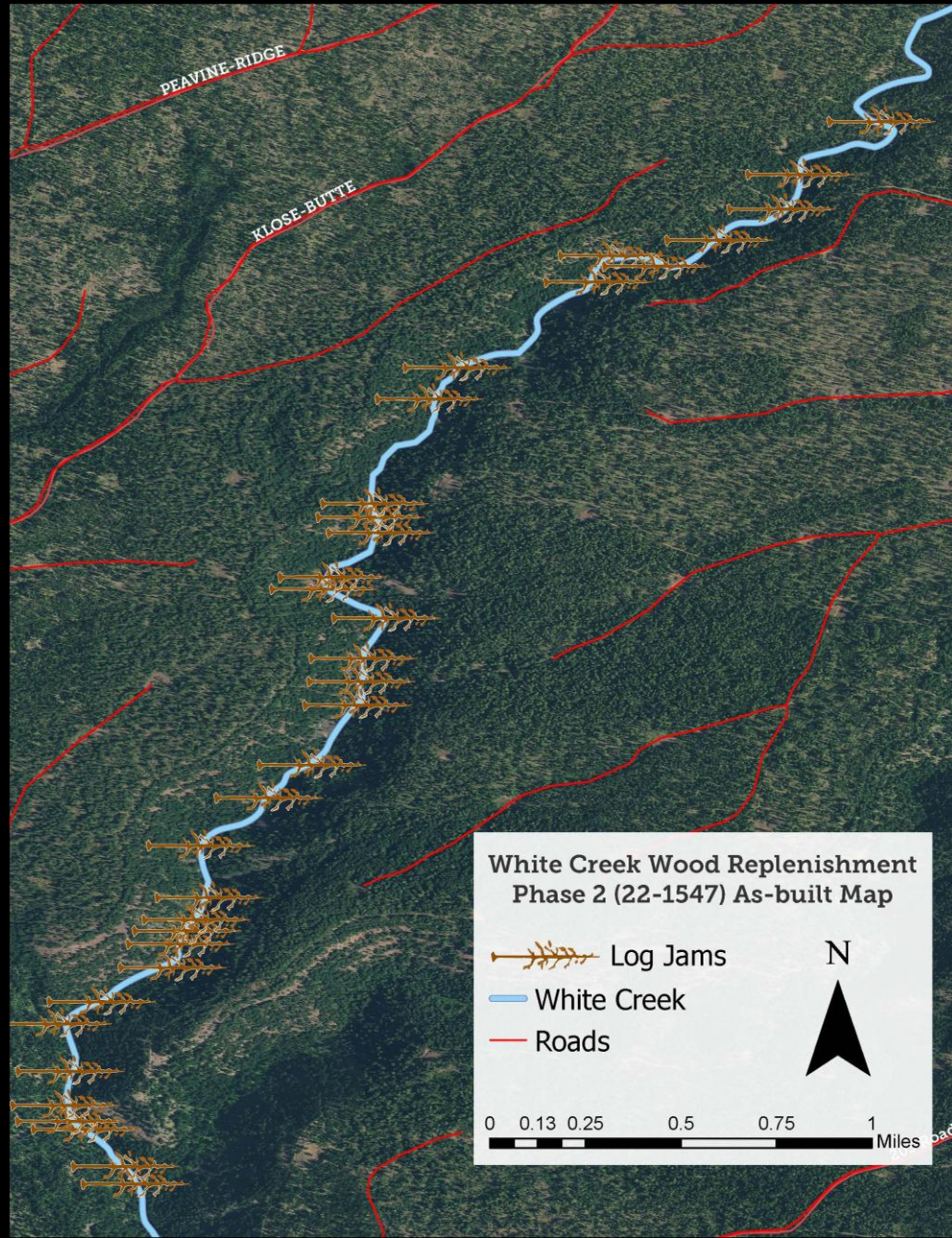
White Cr Restoration Phase 2 (RM 5.0-8.3)
Treatment and Staging Areas



Restore

4 Days (23.4 hours):

- **334 turns (4.2 minutes)**
- **423 logs**
- **34 log jam complexes**
- **2,655,900 lbs. lifted**



Restore





Southern Territories
HABITAT PROJECTS
2026 & BEYOND

Brush Creek LTPBR

Carrols Creek Meadow Restoration

Dry Creek Confluence

Dry Creek Floodplain Restoration RM1.8–3.8

Rattlesnake Creek Floodplain Reconnection Phase 2

Schoolhouse Creek Riparian Revival

Trout and Bear Creeks LTPBR

Upper Klickitat Floodplain Reconnection

Upper Tepee Ck LTPBR

White Creek LWD Enhancement Phase 3

Youngs Wetland Assessment & Design

HONORING PLACE.
PROTECTING LANDSCAPES.
RESTORING PROCESSES.

“Said the river: imagine everything you can imagine, then keep on going.”

Mary Oliver

