



What we've been up to...



Presented by Alex Conley

Executive Director

Yakima Basin Fish and Wildlife Recovery Board

What a long strange trip
~~it has been~~ it is!



Our Mission

To conserve and restore sustainable and harvestable populations of native fish and wildlife species in close partnership with the local communities of the Yakima River Basin.



What is the Yakima Basin Fish & Wildlife Recovery Board?



An independent Non-Profit corporation
Led by Tribal, County & City Governments

Board meets 6 times per year

Uses consensus decision making

Funded with a mix of state and federal \$s

One of 7 state-recognized Regional Salmon
Recovery Organizations

COULDN'T EXIST WITHOUT OUR PARTNERS!

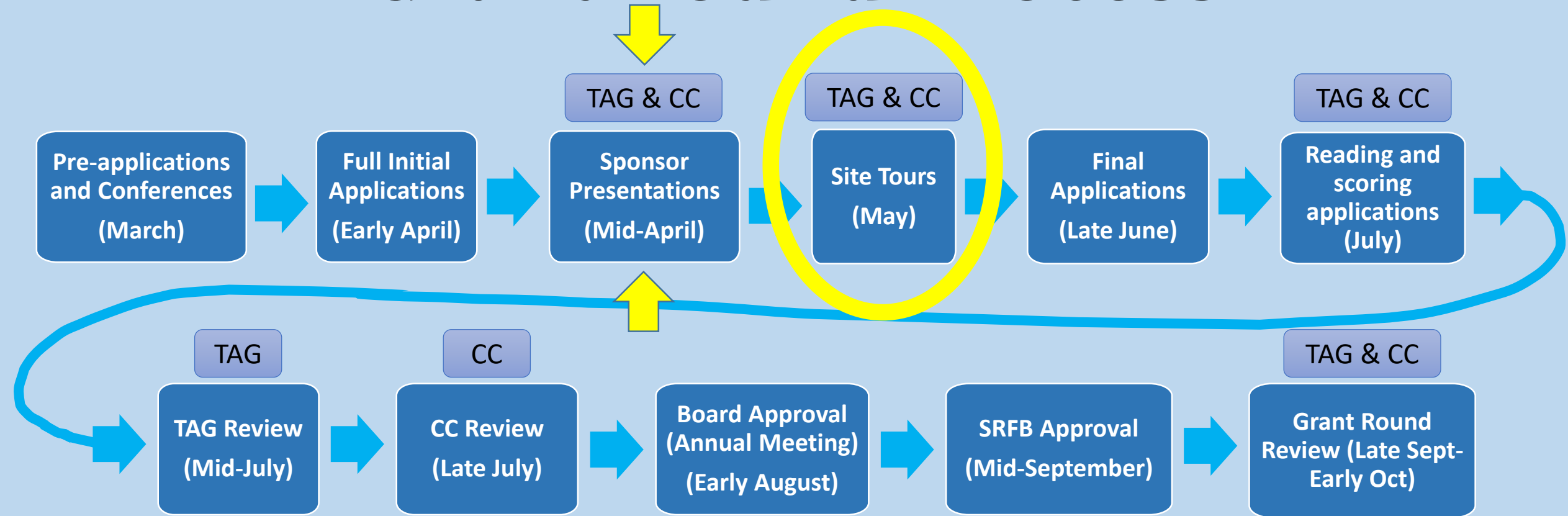
Our SRFB Lead Entity Role:

- The Salmon Recovery Funding Board funds salmon recovery projects in Washington
- The funding comes from a mix of state funds (40%) and federal funds (60%)
- Projects are recommended to the SRFB for funding by **local Lead Entities**
- We are the Yakima Basin Lead Entity

As the Lead Entity, we:

- Advertise for and accept applications for SRFB funding
- Work with applicants to ensure strong proposals are submitted
- Convene a Technical Advisory Group to review the biological & technical merits of proposed projects
- Convene a Citizen's Committee to review the projects' merits (including economic, social and cultural aspects) and develop a ranked list of proposed projects
- Submit the final ranked list to the SRFB

Grant Round Process





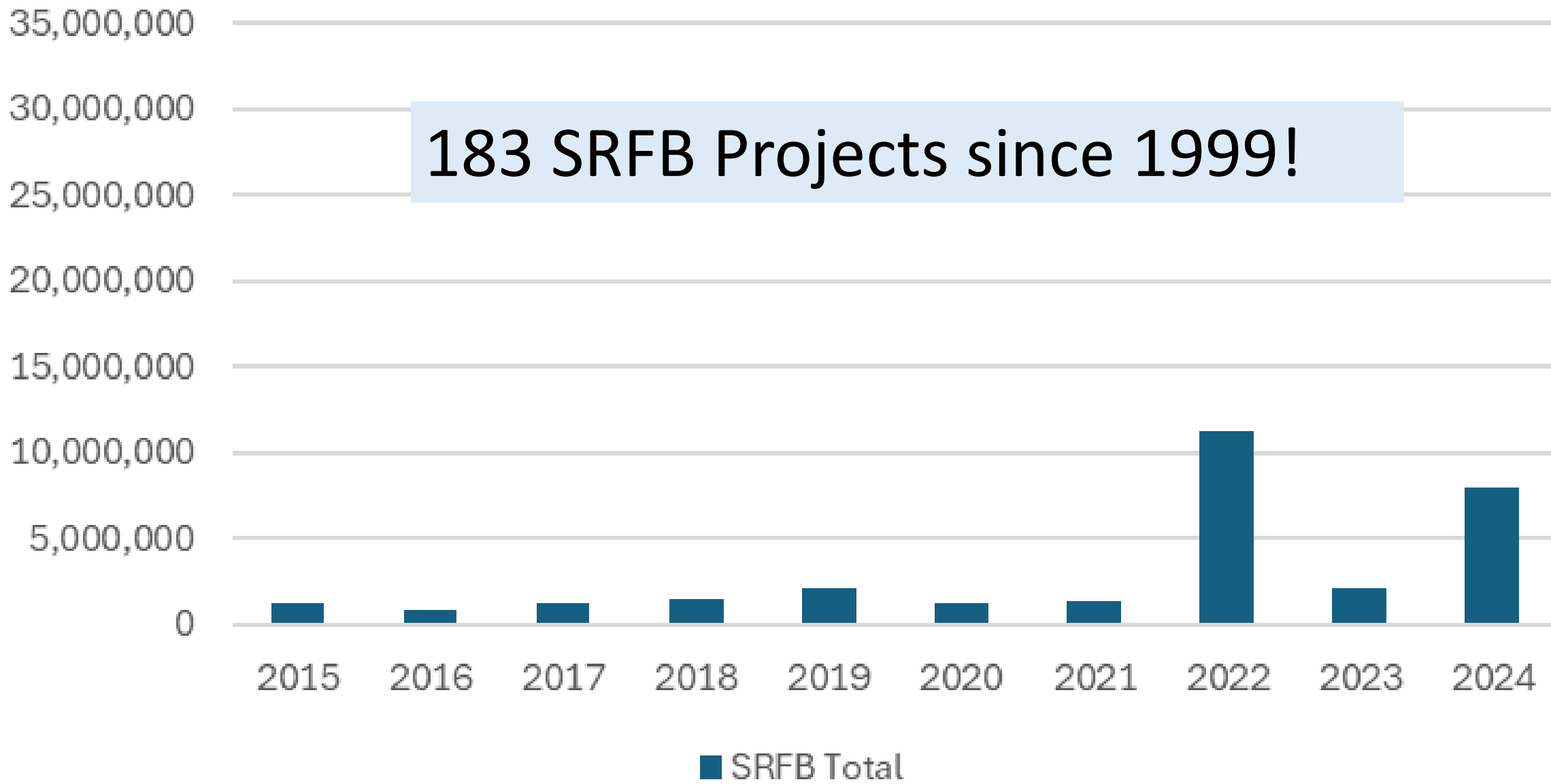


2023 Recommended Project List

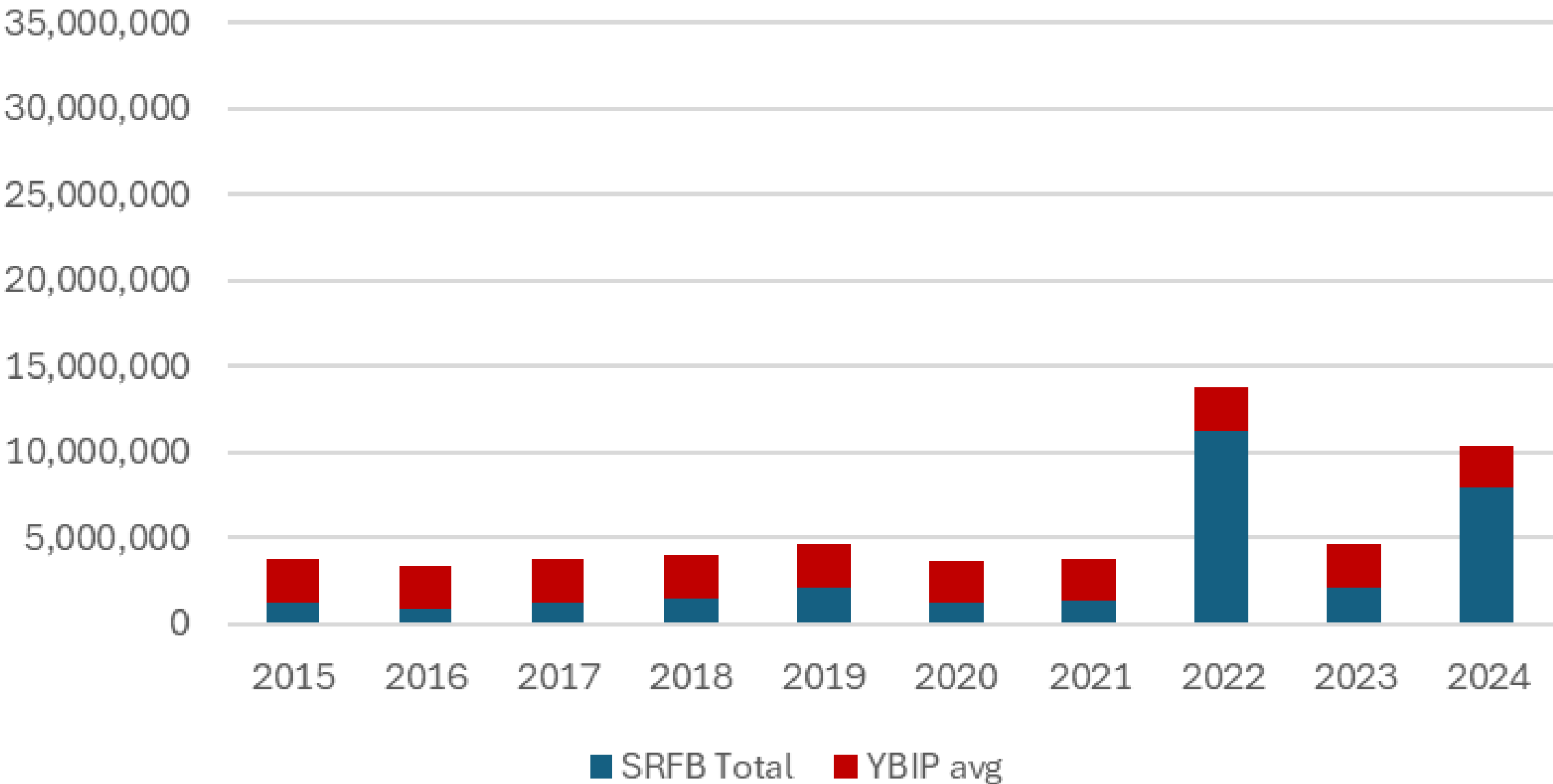
Rank	TAG Rank	Sponsor	Project Name	CC Score	TAG Score	SRFB \$s	Cumulative
1	1	Washington Water Trust	Teanaway River – Trust Water Rights Acq	3	68.7	\$234,210	\$234,210
2	2	Kittitas County Public Works	Yakima River Corridor Plan Ph IIB: Design+Riparian	7	57.5	\$672,426	\$906,636
3	3	Kittitas Conservation Trust	Gold Creek Restoration RM 2 - 3	4	20.8	\$500,000	\$1,406,636
4	4	Benton County Conservation District	Amon Creek, Thermal Refuge Habitat Enhancement	5	20.2	\$648,638	\$2,055,274
5	6	Yakama Nation	Upper Toppenish Wood Supplementation Design II	6	19.9	\$136,000	\$2,191,274
6	7	Kittitas County Conservation District	Cooke Creek RM 4.25 & RM 3.86 Passage & Screening	6	11.8	\$349,999	\$2,541,273
7	5	Trout Unlimited	Cold Creek Passage Design (at Keechelus Lk)	1	20.5	\$185,637	\$2,726,910
8	8	Mid-Columbia Fisheries Enhancement Group	Little Naches Tributaries Large Wood-Design+Permit	4	16.8	\$150,512	\$2,877,422
9	9	Yakama Nation	Tieton River Restoration Site #4	3	15.0	\$663,855	\$3,541,277
10	10	Yakama Nation	Mid-Satus Creek Watershed Riparian Assessment	5	7.6	\$200,000	\$3,741,277
Defer	11	Washington Water Trust	Big Creek Ensign Ranch Flow Enhancement	0	15.4	\$82,010	\$3,823,287

State Capital \$s for Yakima Projects (partial)

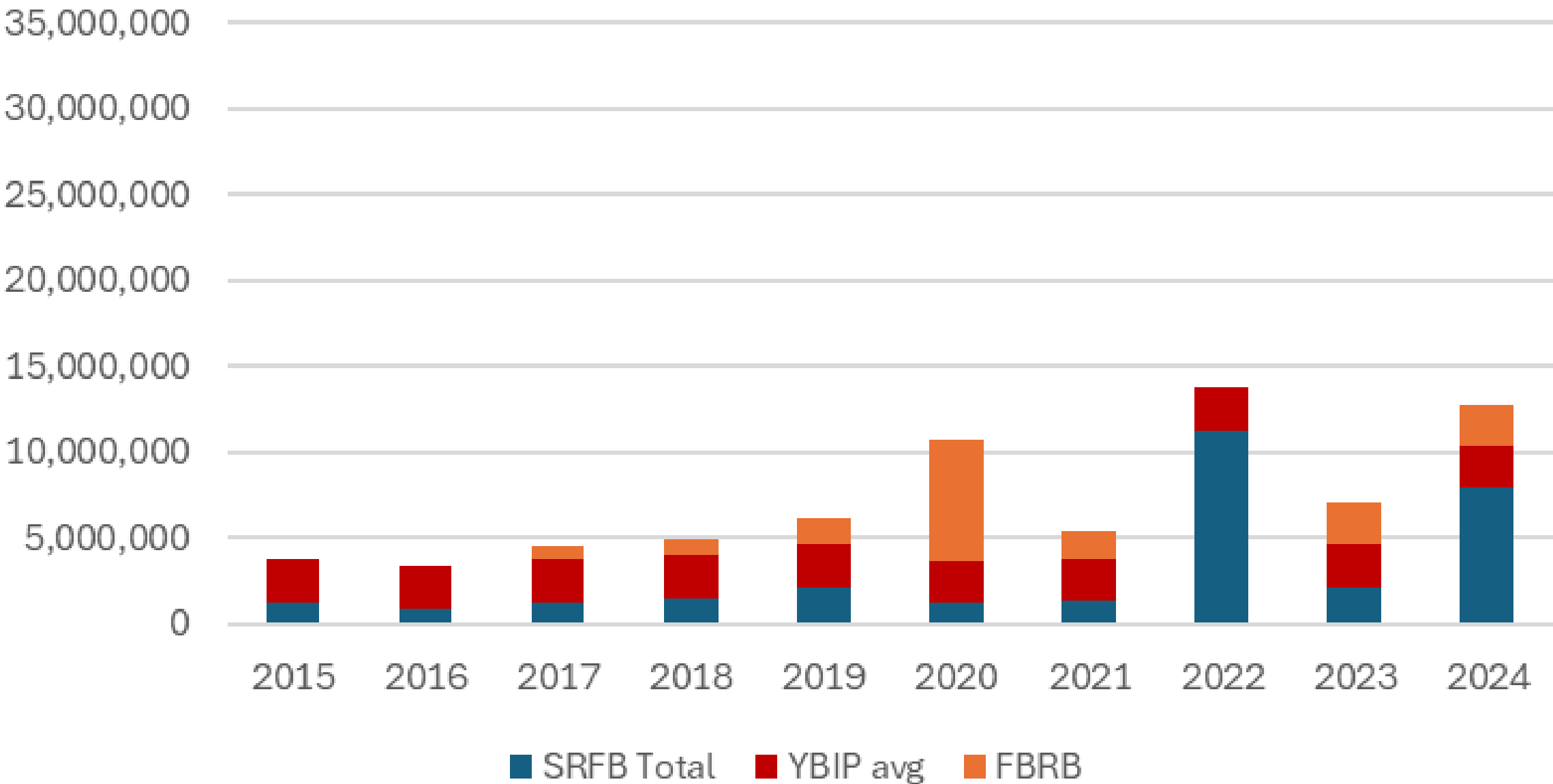
183 SRFB Projects since 1999!



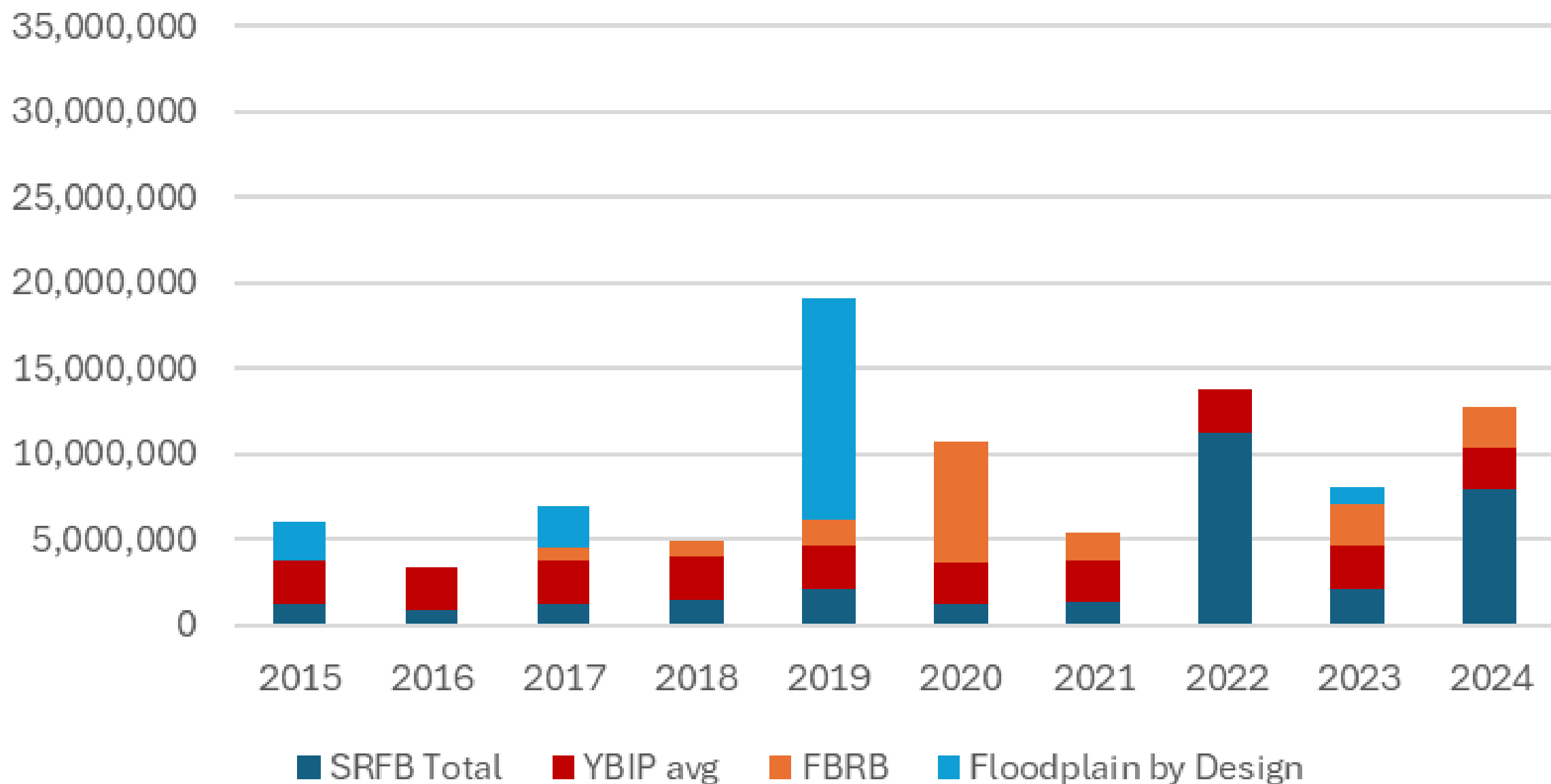
State Capital \$s for Yakima Projects (partial)



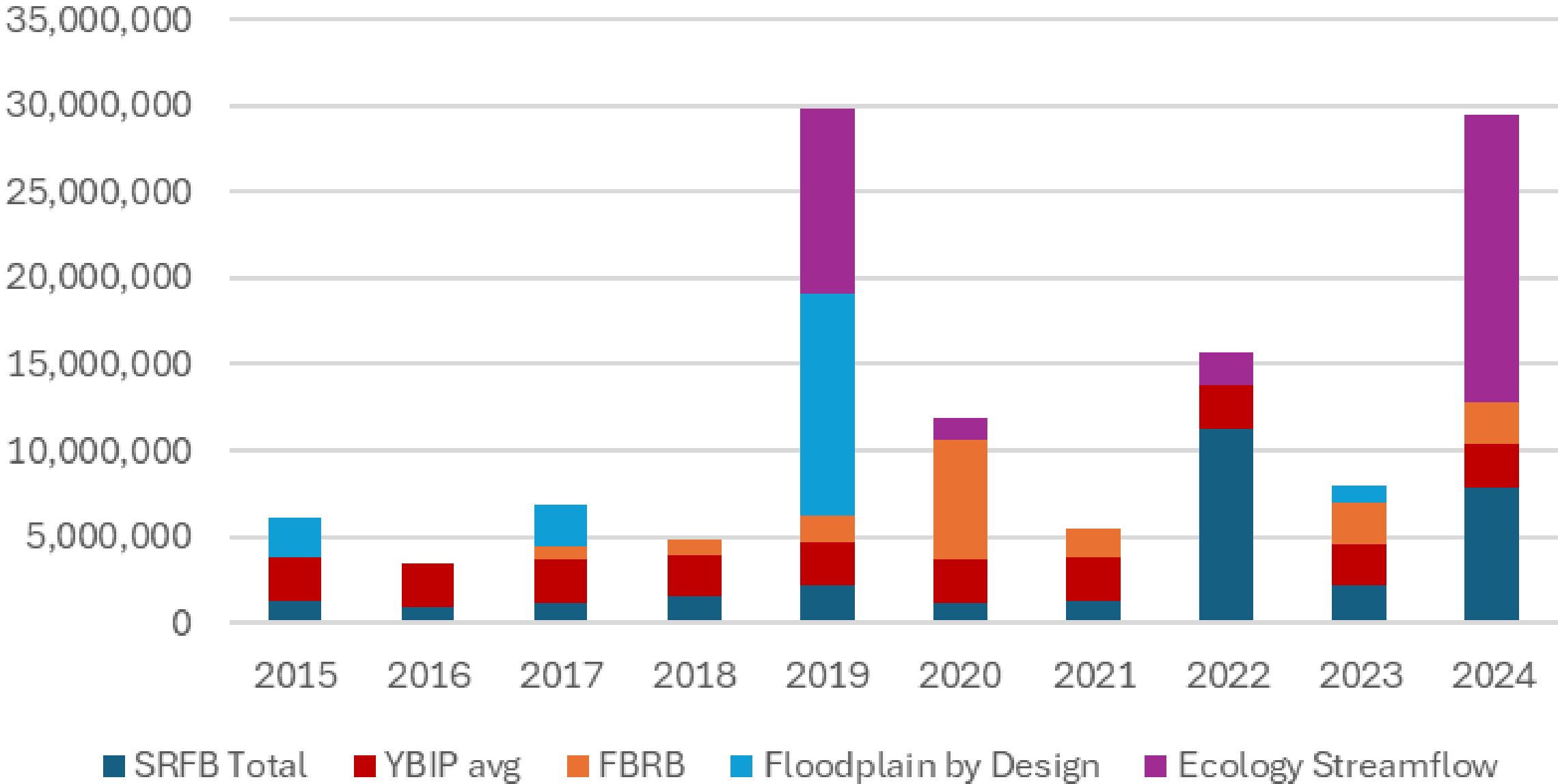
State Capital \$s for Yakima Projects (partial)



State Capital \$s for Yakima Projects (partial)



State Capital \$s for Yakima Projects (partial)



MONITORING GRANTS/Committee

- SRFB is launching a new Regional Monitoring Grant Program in 2025
- We convened a monitoring committee to review/develop Yakima proposals for the statewide competition
- Chris Johnson will present the proposal we are co-submitting in 2025
- Committee continuing to meet to develop a list of key uncertainties to guide monitoring and research work

2009 YAKIMA STEELHEAD RECOVERY PLAN

Extracted from the
2005 Yakima Subbasin Salmon Recovery Plan

With Updates

Final
August 2009



Recovery Plan Supplements

- Lower Yakima Predation White Paper (2017)
- Water Stargrass White Paper (2021)
- Fish Barrier Analysis and Prioritization (2025?)
- Yakama Nation update of plan elements for on reservation tributaries (draft in 2024)
- Development of GIS portal for recovery & restoration data
- Initiation of Naches Assessment

Management and Control Techniques for Water Stargrass in the Lower Yakima River

FINAL Report to the Yakima Basin Fish & Wildlife Recovery Board



Photo: Yakima River, 2019 by Stephen Ingalls, Benton Mosquito Control

Aaron Pelly, Marcella Appel, Rachel Little

Benton Conservation District, Kennewick, Washington

September 17, 2021

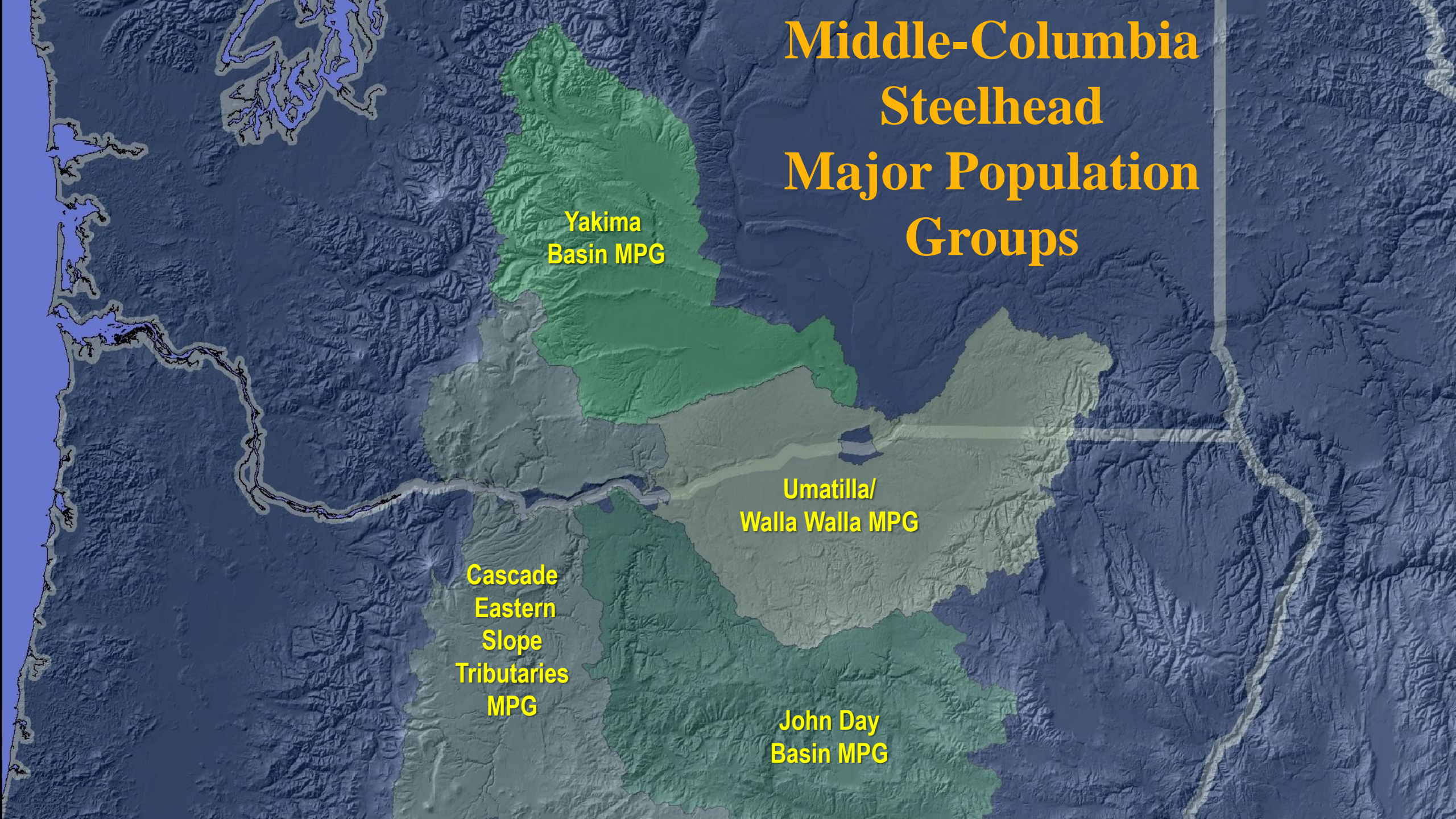
Middle-Columbia Steelhead Major Population Groups

Yakima
Basin MPG

Umatilla/
Walla Walla MPG

Cascade
Eastern
Slope
Tributaries
MPG

John Day
Basin MPG







Welcome Aimee
Taylor!

Yakima Basin Bull Trout Action Plan

Add Actions

View Actions

Outreach to Policy Makers

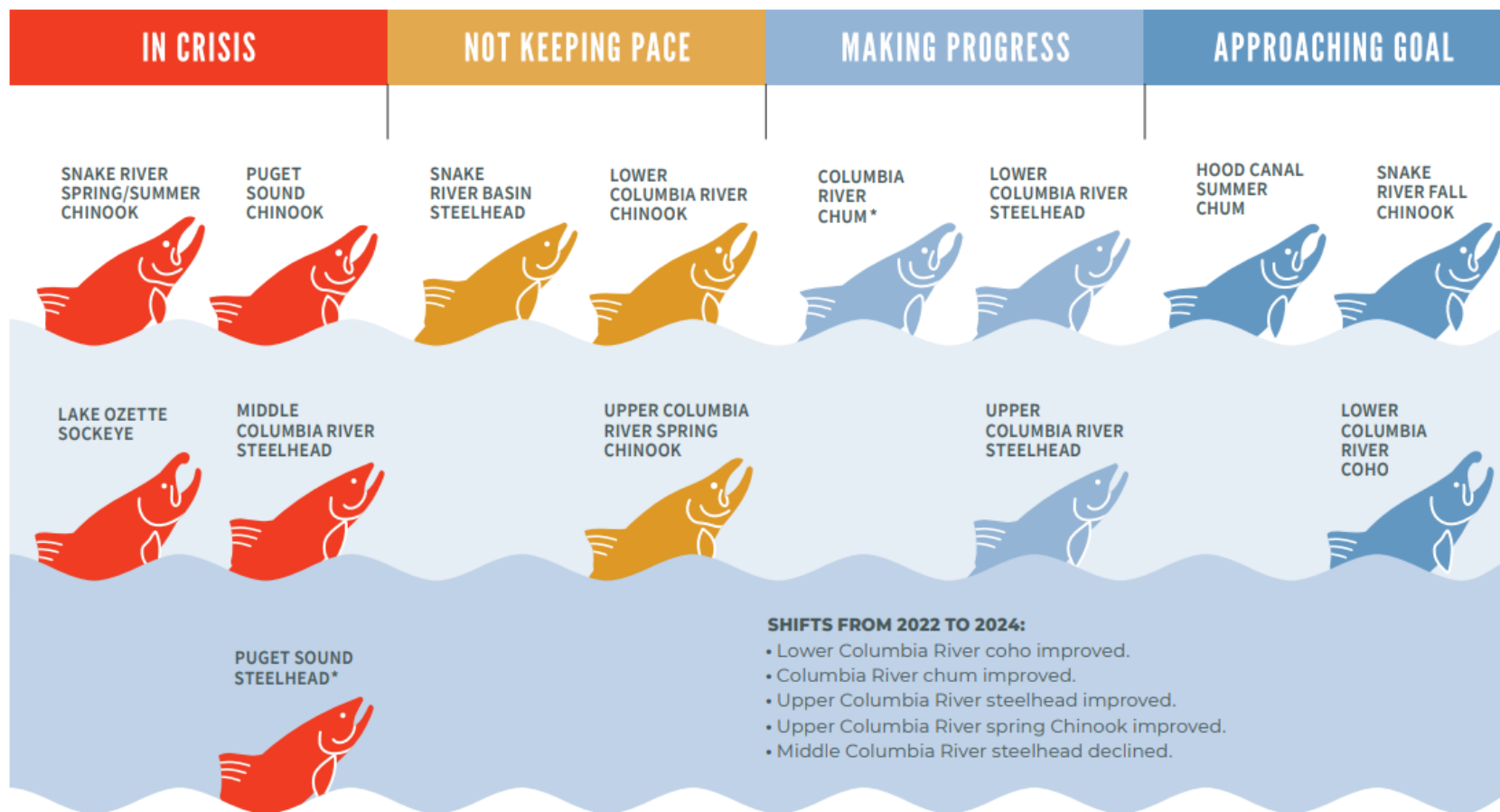
- Work with law makers in Olympia to build support for salmon recovery programs
- Work with state agencies on policy development
- Provide input on our region for statewide reporting efforts



Salmon Abundance | 2024

7

Salmon Status in Washington | Salmon Abundance



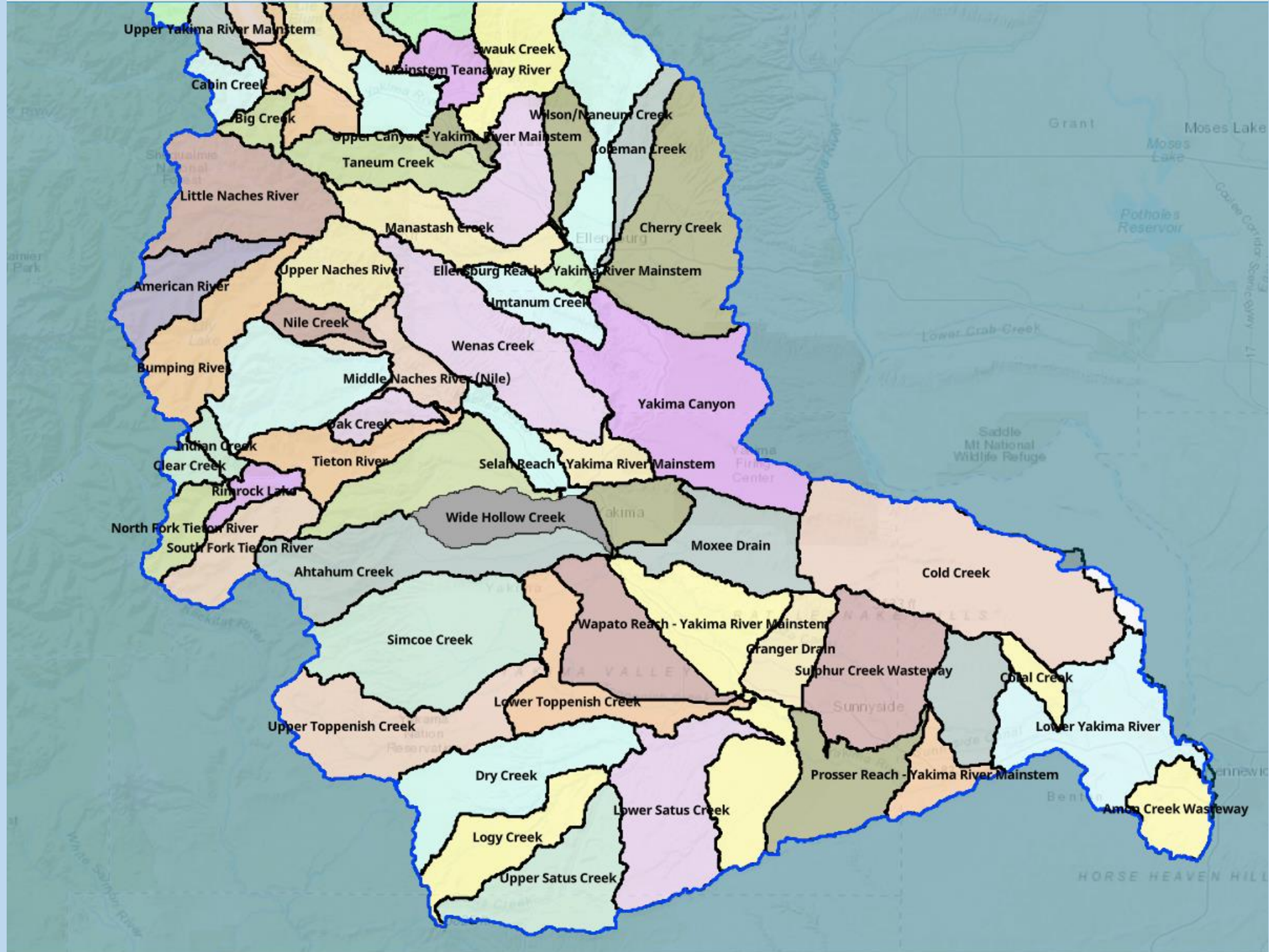
* Lacks complete data.

Data and analysis by Washington Department of Fish and Wildlife

<https://stateofsalmon.wa.gov/>

Building a Durable Knowledge Base

- Slowly building the Yakipedia website...
- Archiving written documents in our Zotero library
- Working on sharing GIS resources through a web portal



Priorities for the next year

- Keep it all together in these strange times....
- Keep supporting great projects from our partners
- Complete the Bull Trout Action Plan Update and make recommendation on priority actions to YBIP leadership
- Complete our fish passage prioritization project
- Convene the Yakima Steelhead Working Group
- Work with partners to develop policy proposals for the legislature
- Keep building Yakipedia and our web library



The End.....

YOUR THOUGHTS?

