

Working Forest Fund

Collaboration for landscape scale forest conservation



Kaola Swanson, Columbia Gorge Program Manager

kswanson@conservationfund.org

The Conservation Fund

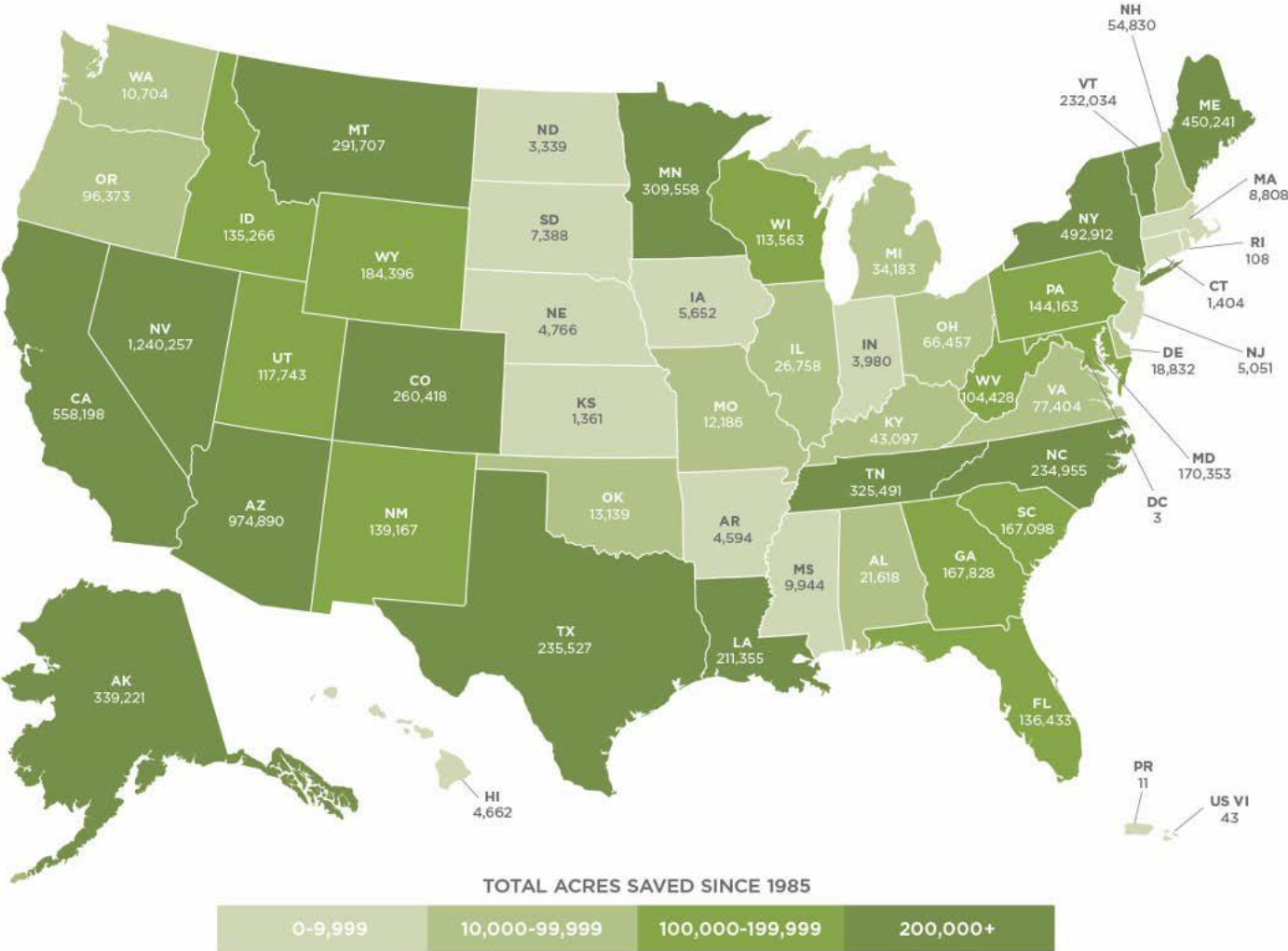
April 16, 2024

The Conservation Fund: Who Are We?

At the Fund, we make conservation work for America. By creating solutions that make environmental and economic sense, we are redefining conservation to demonstrate its essential role in our future prosperity.

Top-ranked for efficiency and effectiveness, we have worked in all 50 states to protect over 8 million acres of land since 1985.

Over 8 Million Acres Protected Since 1985



The Conservation Fund

Working Forest Fund®

Working Forest Fund Impact Metrics

Select a Project:

None

1,037,671

Acres Impacted*

861M

Annual Economic Impact (\$)

254M

Metric Tons of CO₂e Stored

7,380

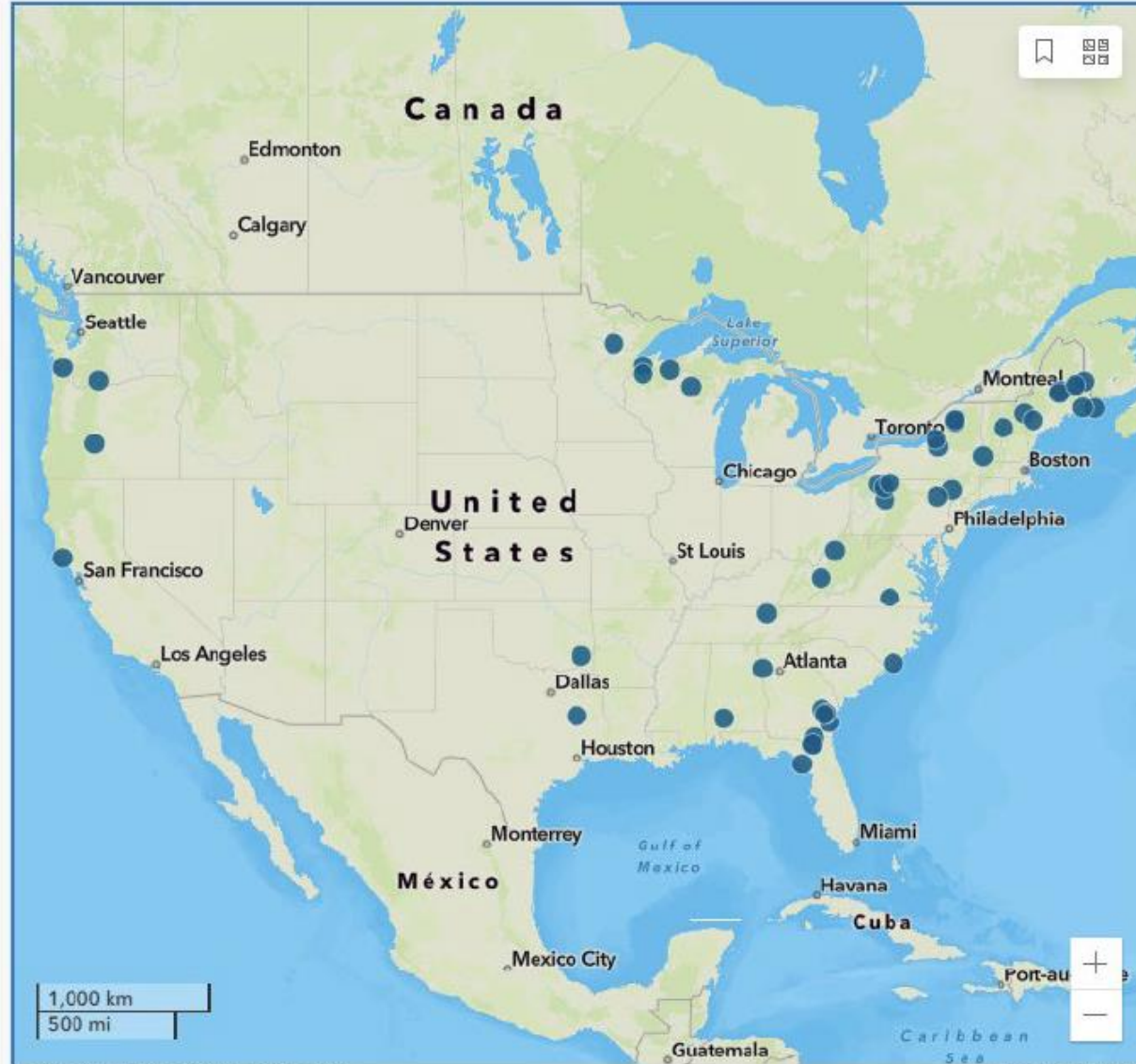
Jobs Sustained

2,444

Stream Miles

150,597

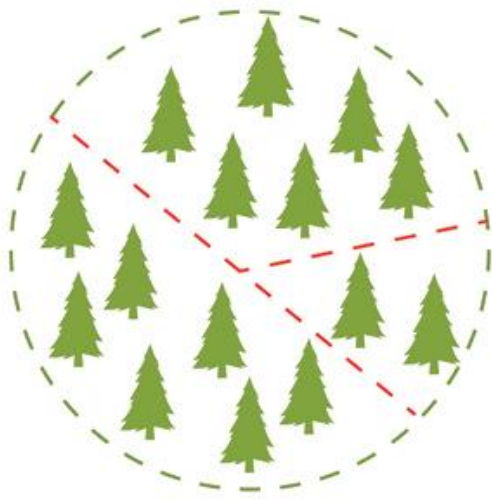
Acres of Wetlands





The Conservation Fund

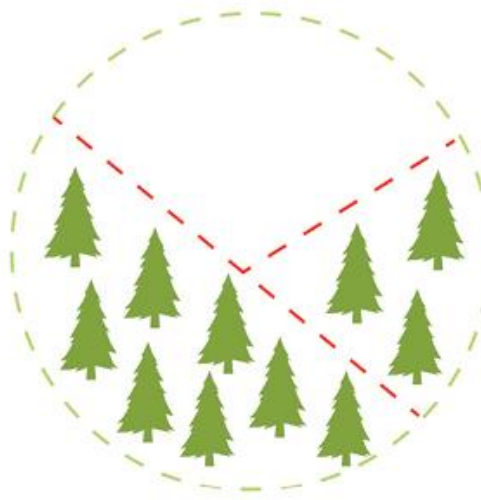
Working Forest Fund®



1.

Parcelization

Although broken into parcels, land remains all forested



2.

Fragmentation

Some forest cover is lost, and some forest cover remains

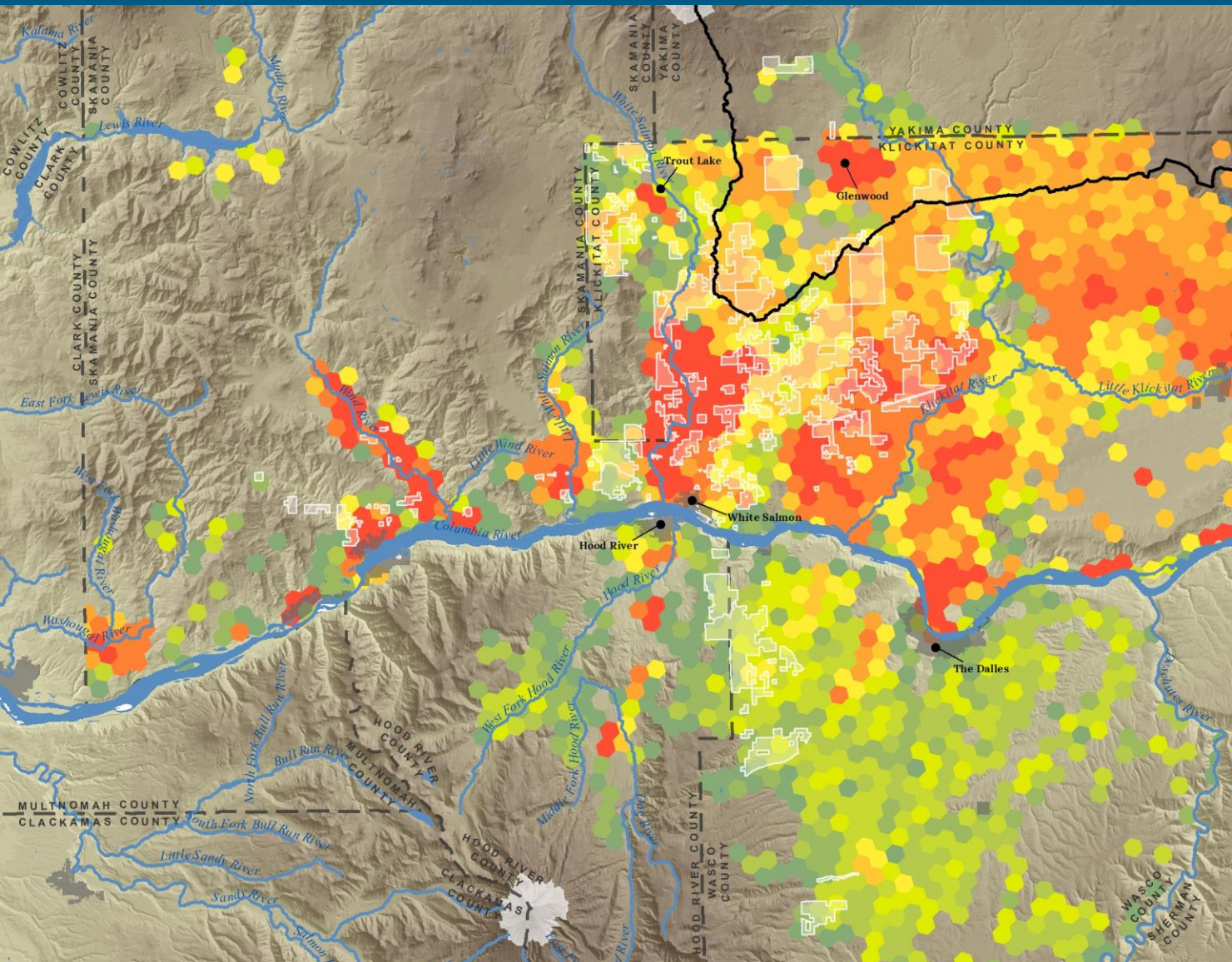


3.

Conversion

All forest cover is lost, as land is converted to non-forest use

Threat of Development



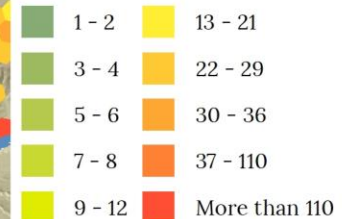
Threat of Development

▭ Yakama Jurisdictional Boundary

▭ Stevenson Lands

▭ City Boundaries

Allowed Additional Development (New Structures Allowed Per Zoning)*



*Data was created using county parcel data and zoning data from 2013 - 2017 depending on the availability by county. Data represents the average of new structures possible within each 1 square mile hex as allowed by current zoning laws.

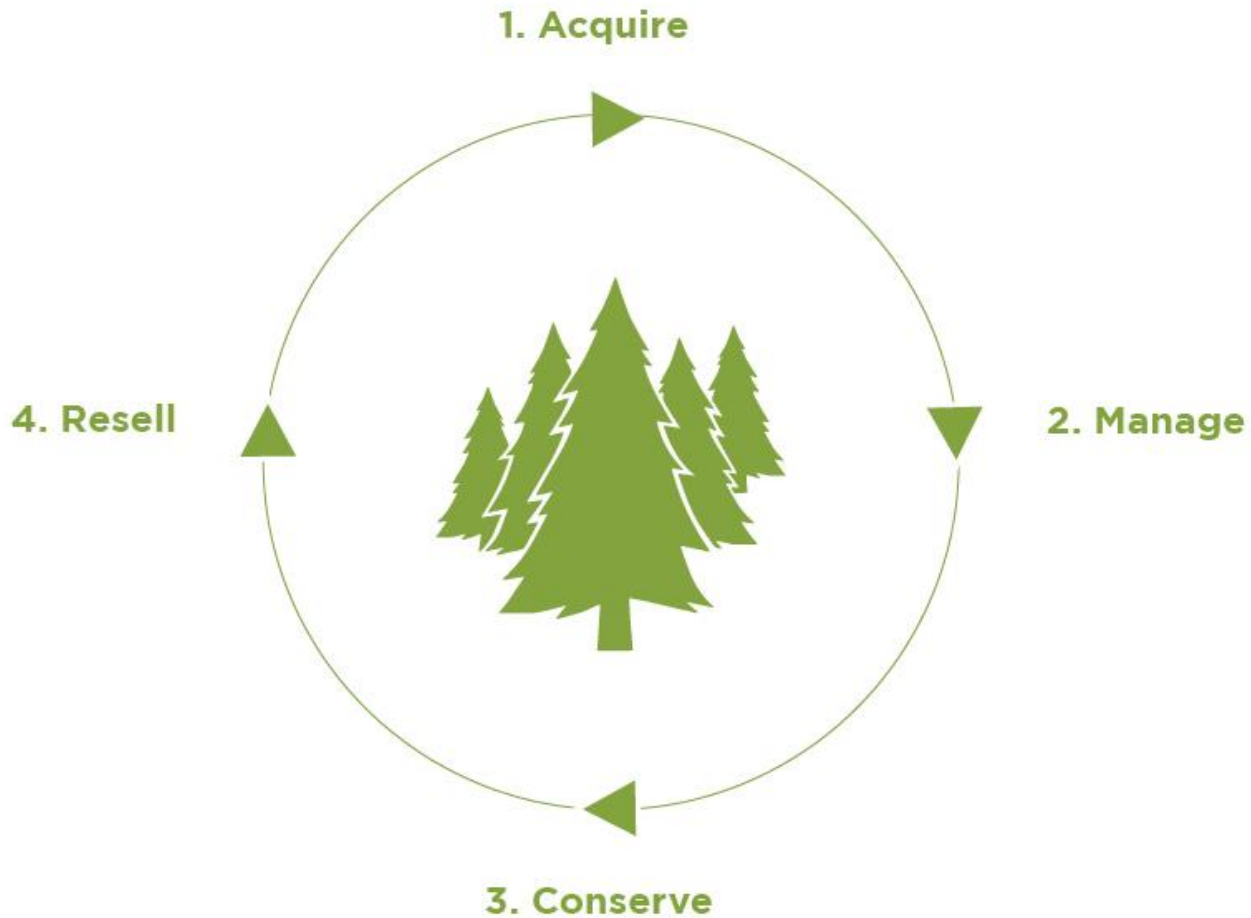
 THE CONSERVATION FUND
Columbia Land Trust





The Conservation Fund

Working Forest Fund®



Lupine Forest LLC

Established November 24, 2021



THE
CONSERVATION FUND

Stevenson Land Company (+/- 100,631 acres)

Large Private Forestland Ownerships

Yakama Nation

Yakama Jurisdictional Boundary

Protected Areas

Federal Land

State, Local, & Private Conservation Land

0 5 10 Miles



Mount Adams

Washington

Oregon

Gifford Pinchot
National Forest

Little White Salmon River

White Salmon River

Klickitat River

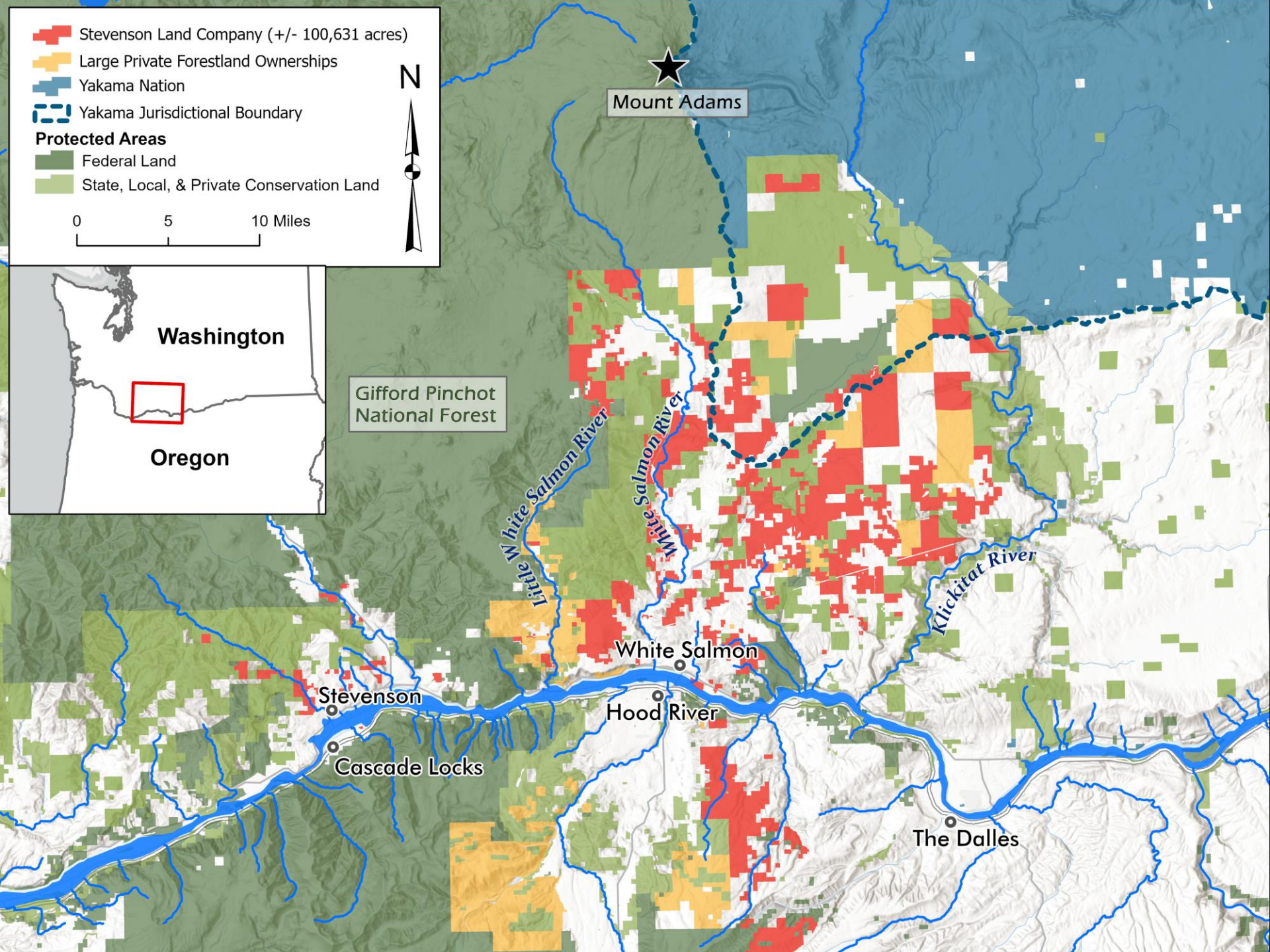
White Salmon

Hood River

Stevenson

Cascade Locks

The Dalles



Partnership



Lupine Forest LLC

Future Management Goals

Ecological Management Tradeoffs

SDS clearcut on Tract D, photo of reforestation on April 28, 2022



Variable Density Thinning - Grouse, April 27, 2022



Lupine Forest LLC

Future Management Goals

Yakama Department of Natural Resources - Forest Management

3 years post thinning operation

5 years post thinning, one year after Rx Burn





The Conservation Fund

Working Forest Fund®

Why Variable Density Thinning?

Prescription:

- Thin from below: 15-30' spacing
- ~30% crown reduction
- Promote a mixed stand, favoring oak and pine
- Create a mosaic of habitat by creating small gaps and leaving unharvested areas

Management Objectives:

- Promote Oregon white oak and enhance mixed oak-pine forests
- Preserve and enhance Western Gray Squirrel habitat
- Create healthy, diverse, and fire resilient stands
- Protect and promote older, fire resilient stands



Photo of Woody, April 8, 2022



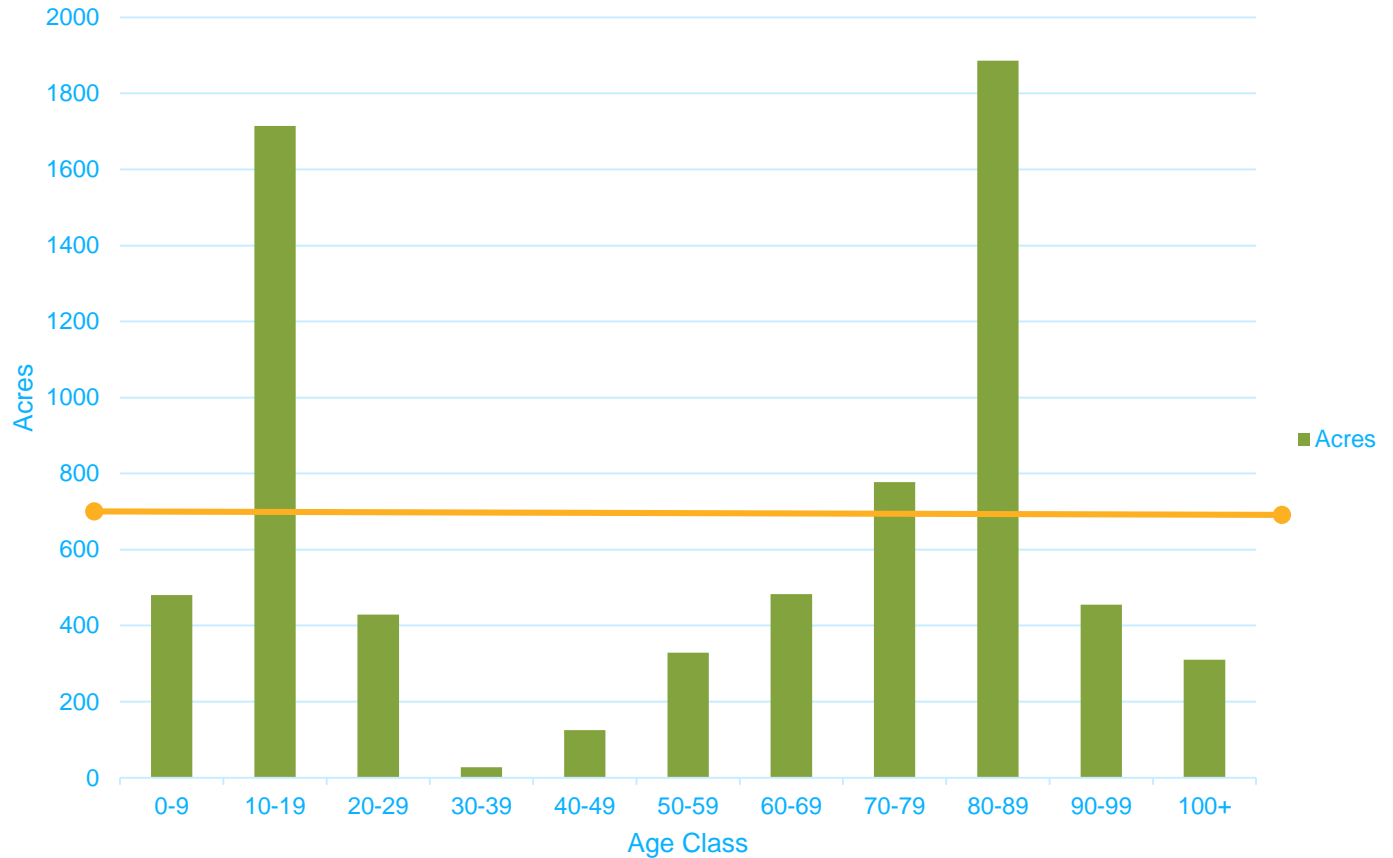
The Conservation Fund

Working Forest Fund®

Management Outcomes

Klickitat: Age Class Distribution

Age	Acres
Inoperable	1825
0-9	480
10-19	1714
20-29	429
30-39	28
40-49	125
50-59	328
60-69	483
70-79	778
80-89	1886
90-99	455
100+	310
Total Operable	7017
Total	8841
Even distribution	702





The Conservation Fund

Working Forest Fund®

Financial Management Tradeoffs:

SDS clearcut on Tract D, photo of reforestation on April 28, 2022



Variable Density Thinning - Grouse, April 27, 2022



Restoration on Friend Tract

- Forest Restoration (Friend Tract):
 - 44 acres of oak restoration completed
 - 154 acres of fuels reduction work completed



Buddy Harvest Project – Pre and Post View



Amigo Harvest Project – Pre and Post View

Restoration on Friend Tract



Amigo Post Restoration Work – Fall Pile Burning



Buddy Post Restoration Work

Compadre Restoration Project

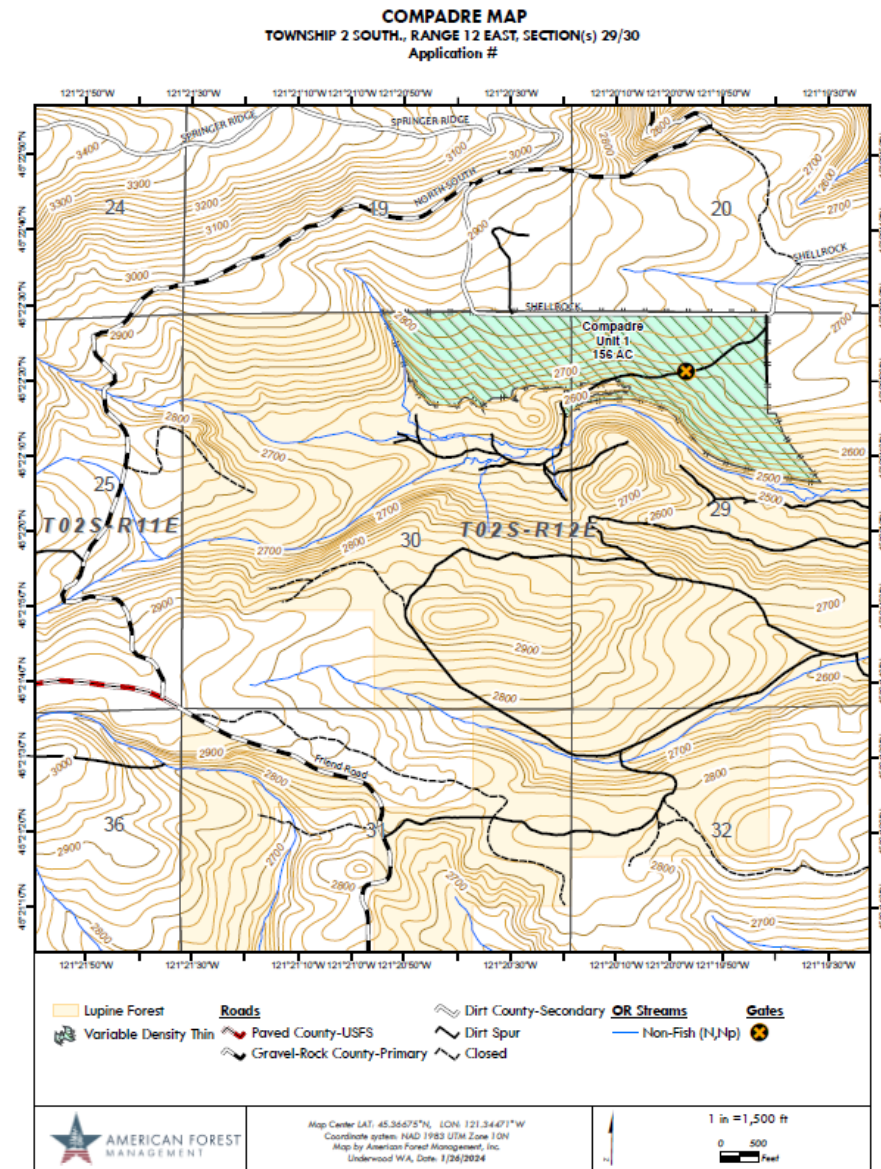
- Compadre (150 acres - Wasco County, Oregon)

Current Site Characteristics

- Oak woodland - mixed conifer
- Conifer encroachment & mortality
- Mostly flat with some topography
- Sensitive soils and native plant populations

Goals

- Reduce conifer competition
- Promote Oregon white oak
- Create healthy, fire resilient stands
- Promote native vegetation



Compadre Restoration Project

Treatments

- Retain/release legacy trees
- Reduce competition by thinning
- Reduce fuel loads
- Increase native vegetation

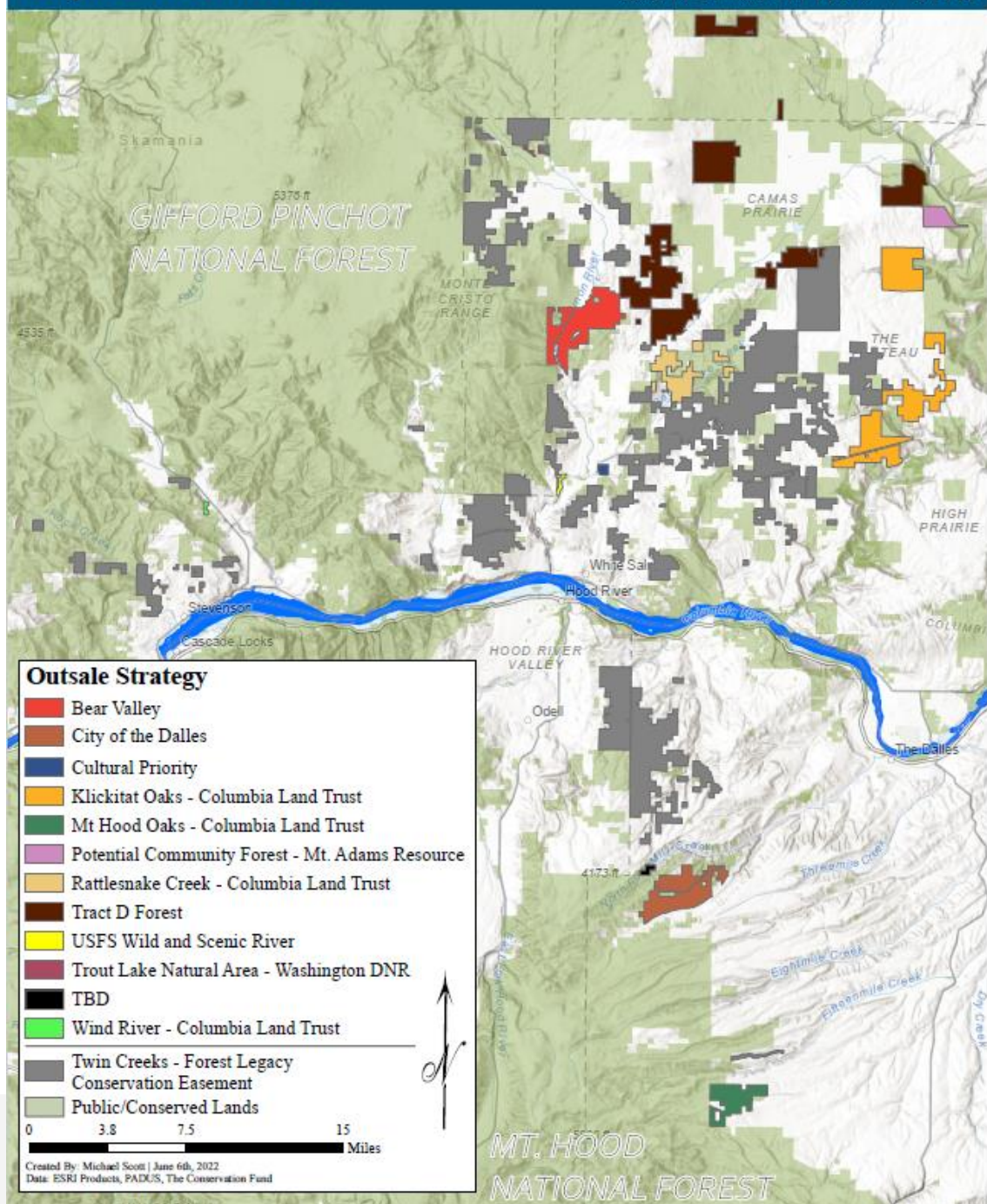
Outcomes

- Shift in oak crown position
- Change in wildfire likelihood from high intensity, stand replacing to low intensity, frequent fire
- Increase % cover of oaks
- Increase resource availability
- Landscape resilient to climate change



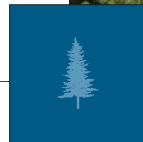
Partnerships for Permanent Conservation

- Yakama Nation
- US Senator Patty Murray
- US Senator Maria Cantwell
- US Senator Jeff Merkley
- US Representative Ron Wyden
- US Representative Jaime Herrera-Beutler
- USFS Gifford Pinchot National Forest, Mt Adams Ranger District
- USFS Mt Hood National Forest
- USFS Columbia Gorge Scenic Area
- US FWS
- Hood River County
- Wasco County
- Skamania County
- Klickitat County
- The Conservation Fund
- City of the Dalles
- Underwood Conservation District
- City of White Salmon
- Trout Lake Community Council
- Pacific Birds Habitat Joint Venture
- American Birds Conservancy
- Friends of the Columbia Gorge
- Mt Adams Resource Stewards
- Wilkins Kaiser, and Olsen, Inc. (WKO, Inc)
- Green Diamond Management Company
- Glacier Springs Water Association
- American Whitewater
- Friends of the White Salmon
- Hood River Area Trail Stewards
- The Columbia Land Trust



THE
CONSERVATION FUND

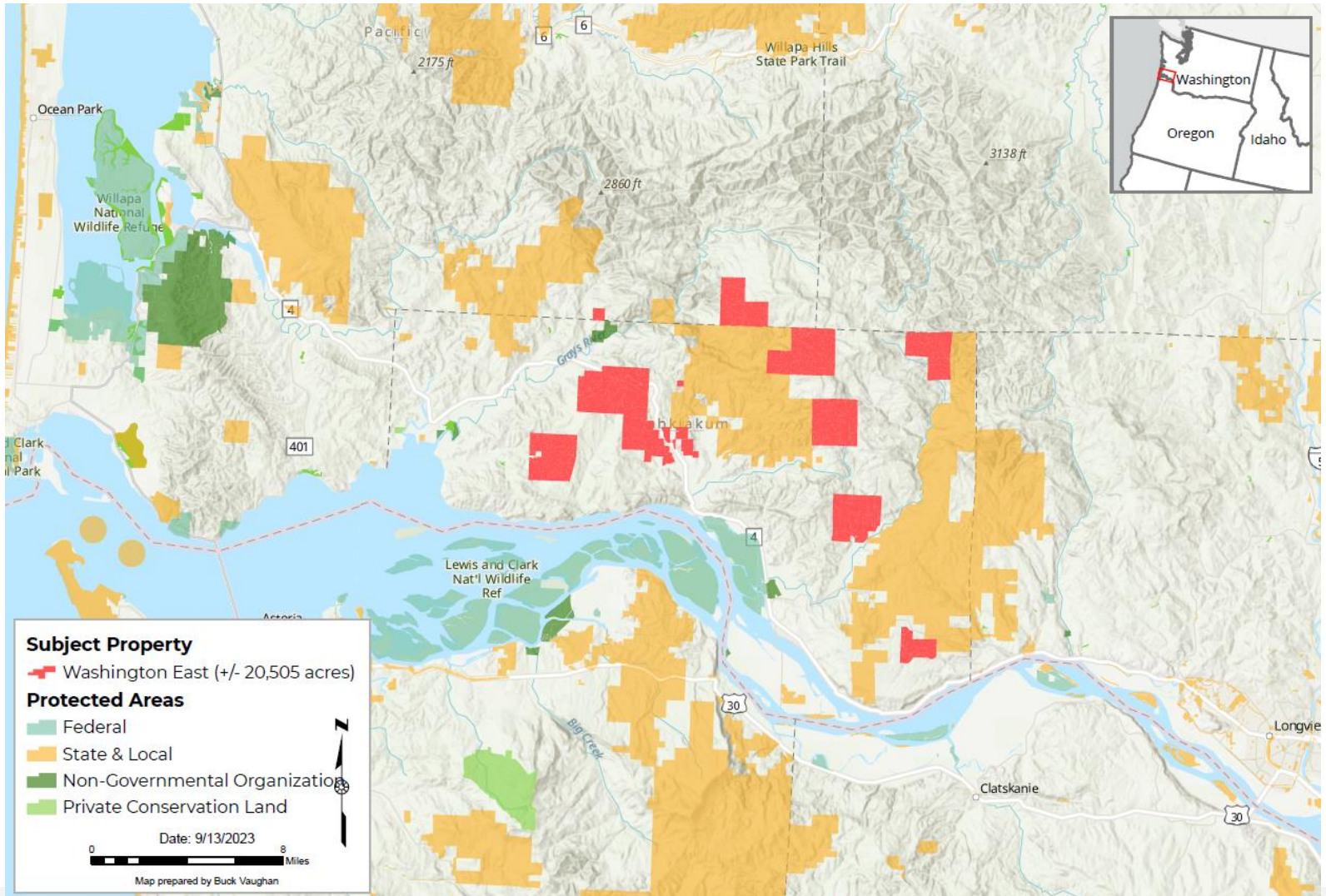
Working Forest Fund:
Deep River Woods, Washington



THE
CONSERVATION FUND

Deep River Woods

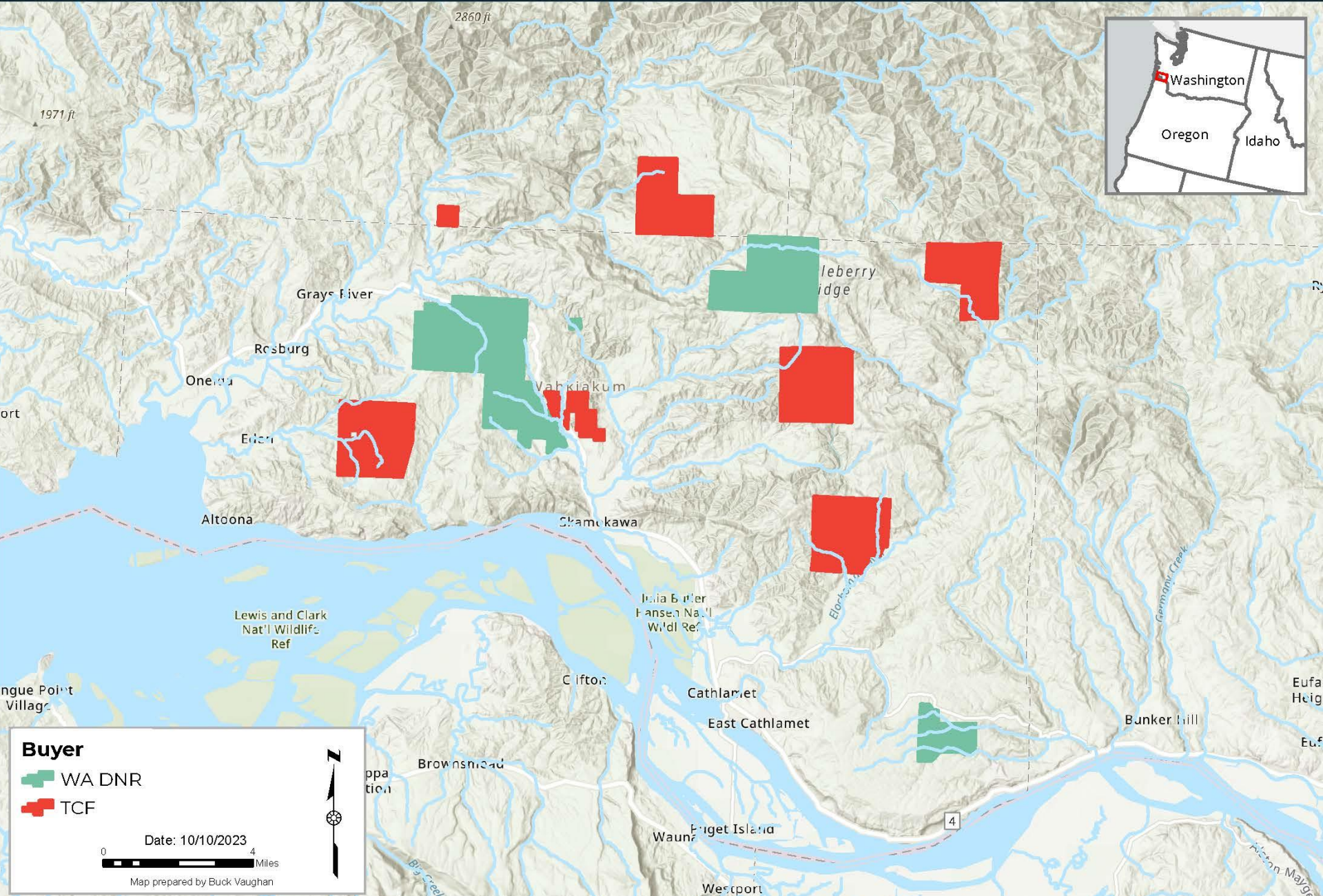
Pacific and Wahkiakum County, WA



Deep River Woods

Pacific and Wahkiakum County, WA

THE
CONSERVATION FUND



Buyer
WA DNR
TCF

Date: 10/10/2023

0 4 Miles

Map prepared by Buck Vaughan

Deep River Woods

Pacific and Wahkiakum County, WA

Conservation Outcomes

- Highly productive temperate coastal forest
- Douglas-fir, hemlock and Sitka spruce
- Positions State of Washington to deliver on the recently passed Climate Commitment Act
- Provides vital revenue source for natural resource dependent counties
- Protects critical habitat for salmon, steelhead and threatened and endangered species such as the marbled murrelet

Property Attributes

- Highly productive temperate coastal forest
- Douglas-fir, hemlock and Sitka spruce
- Accessible domestic and export log demand



Deep River Woods

Pacific and Wahkiakum County, WA



WASHINGTON STATE DEPT OF
**NATURAL
RESOURCES**



Discussion and Questions

