A large, pale yellow bull trout is swimming in a stream. The fish is positioned horizontally, facing right. Above the fish, a white net is partially visible, suggesting a rescue or capture operation. The background is dark, likely the water of the stream, with some rocks visible at the bottom right.

Upper Yakima Bull Trout Rescue and Future Captive Rearing

Connor Parrish, MCF & Russ Byington, YKFP

What We Know: Upper Yakima Bull Trout Populations

- Isolated populations
- Degraded instream habitat
- Changing climate
- Invasive species
- Low number of adult spawners
- Extreme seasonal dewatering
 - Blocks adult migration
 - Stranding and desiccation of juveniles



Photo- Mitch Long KCT

What We Know: Upper Yakima Bull Trout Populations

- Isolated populations
- Degraded instream habitat
- Changing climate
- Invasive species
- Low number of adult spawners
- Extreme seasonal dewatering
 - Blocks adult migration
 - Stranding and desiccation of juveniles



Photo- Mitch Long KCT



Bull Trout Task Force



Since 2011:

- Educated >7,000 anglers and recreationists
- Removed 570 recreational rock dams
- Posted hundreds of signs
 - Bull trout vs brook trout ID
 - Fishing regulations
 - Rock dam awareness
- Support local bull trout monitoring and research
 - Redd surveys
 - Drought monitoring
 - Snorkel surveys
 - Fish rescue



Mid-Columbia
FISHERIES
ENHANCEMENT
GROUP

Bull Trout Population, Restoration and Monitoring Project



Phase 1

- Assist WDFW to expand current rescue operations in Gold Creek and the Upper Kachess River
- Finalize permitting and initiate captive rearing summer 2019
- Release fish back into their native reservoir habitat
- Install and operate PIT tag arrays to monitor fish movement
- Assist WDFW with annual redd surveys



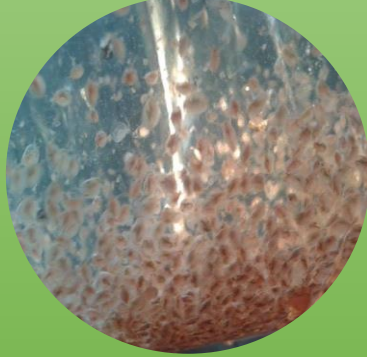
Captive Rearing

- Rescue, transport, and rear up to 1,250 YOY bull trout from each population
- Rear for up to 1 year on a natural diet in 55 degree well water (target release size = 150mm+)
- Sample (genetics, length, weight, disease testing)
- PIT tag/AD clip prior to release June-August



Captive Bull Trout Diet

Daphnia



Brine Shrimp



Blood Worms



Salmon and/or Trout Fry



PIT Tag Arrays

Monitor tagged fish over time to determine movement, survival, and spawning success in Gold Creek, Upper Kachess River, and Box Canyon Creek



Next Steps...

- Phase 2: begin planning and permitting for reintroduction of bull trout to historic habitats using South Fork Tieton as a potential donor population.
- Develop a pilot study to eradicate brook trout using YY-male technology





Thank You!!!

