

Yakima River Basin Water Enhancement Project



YRBWEP Property Improvements

REMOVED CATTLE

Weed Control:

Mechanical

Chemical

Biological, through WSU Entomology Grant

Revegetation:

Reseeding to native grasses

Basin Wildrye

Bluebunch Wheatgrass

Sandberg Bluegrass

Woody Plantings:

Black Cottonwood

Pacific Willow

Shrub Willow, Coyote & McKenzie

Redosier Dogwood

Golden Current

Woods Rose

Weed Control

Mechanical Control

Mowing and Disking, preparation for Chemical Applications or Seeding

Biological Control

Using Bioagents for Control of :

Diffuse and Spotted Knapweeds

Purple Loosestrife

Weed Control

Chemical Control

Application of Chemicals to Control Noxious and Invasive Weeds

Selection of Chemicals are Based Upon:

Effectiveness

Fish Friendly Chemicals

Based on LC50 for Rainbow Trout

WINPEST – Windows Pesticide Screening
Tool

Wenas Property

Acres – 290

Water – 888.1 Acre Feet

Improvements:

REMOVED CATTLE

Planting:

Approximately 35,000 plants

Black Cottonwood

Shrub Willow (Coyote & McKenzie)

Pacific Willow

Redosier Dogwood

Golden Current

Woods Rose

Enclosures:

Approximately 300 enclosures to protect cottonwoods and willows from beaver activity.

Weed Control:

Chemical

Mechanical

Biological Controls – 2004 Release of Bio-control to control Spotted and Diffuse Knapweeds

Cleanup:

Tons of Trash, Car Bodies, Fencing



Parcel lines are general representations of property boundaries. Due to the accuracy of the aerial photos, the property boundaries (parcels) do not accurately depict the features displayed on the aerial photos.

Wenas Property

0 250 500 1,000 1,500 2,000 2,500 Feet





























Schaake Property

Acres – 285

Water – 625.8 Acre Feet

Improvements:

Planning:

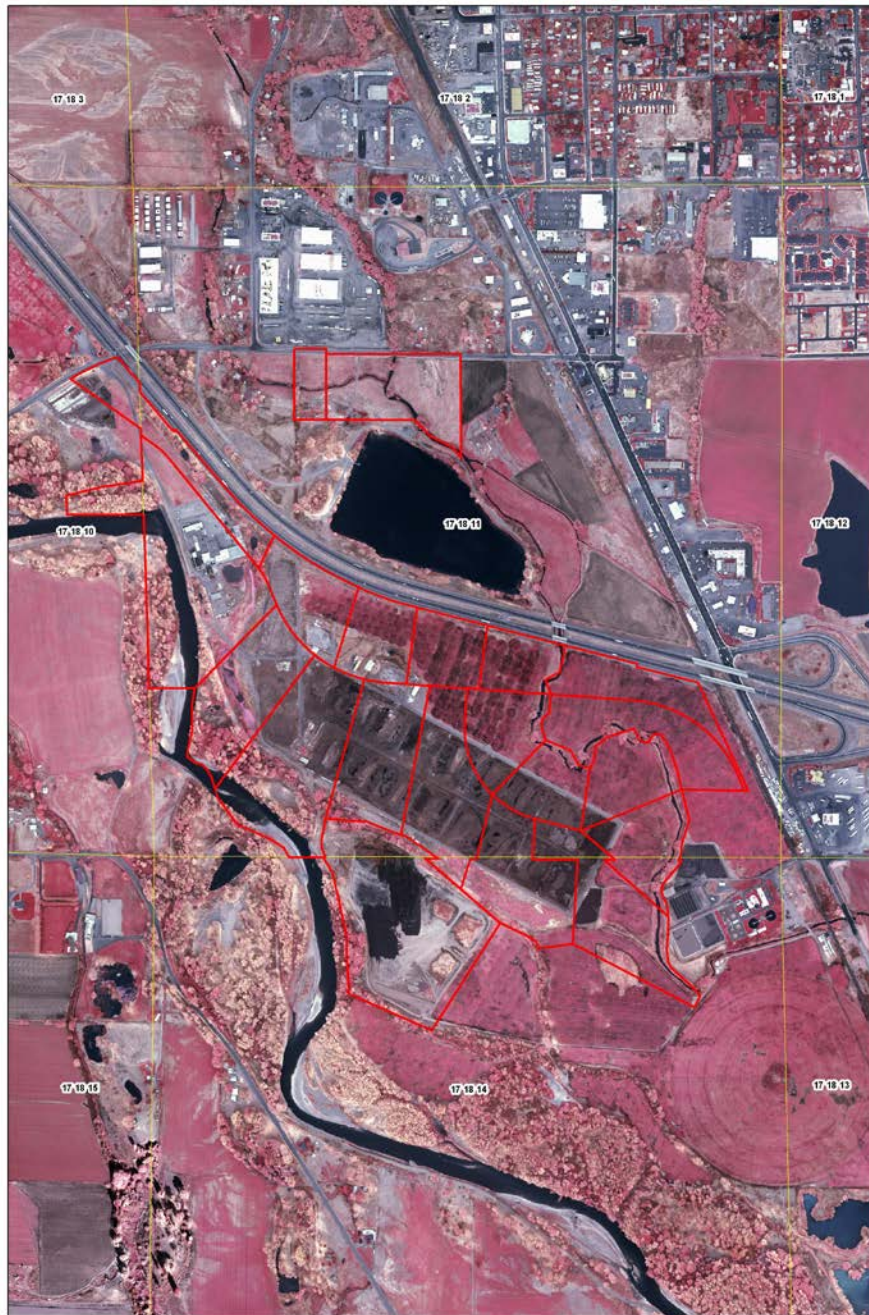
Initial modeling completed by Rob Hildale, Bureau of Reclamation, Denver, Co. Developed alternatives for enhancing fish habitat.

Land Profile Inc. completed an initial study of the soil and water quality

Weed Control:

Chemical

Mechanical

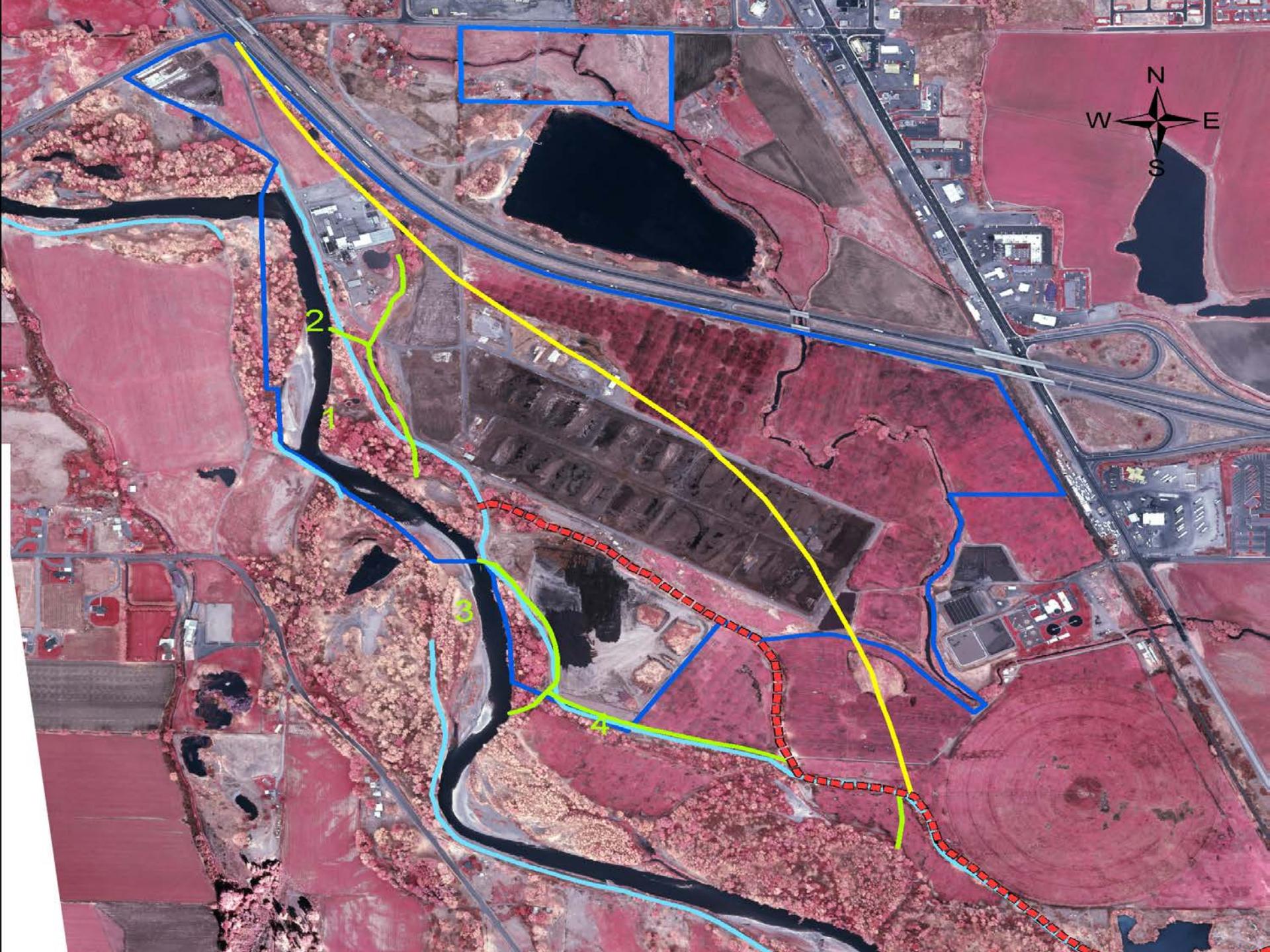


Parcel lines are general representations of property boundaries. Due to the accuracy of the aerial photos, the property boundaries (parcels) do not accurately depict the features displayed on the aerial photos.

Schaake Property

0 250 500 1,000 1,500 2,000 2,500 Feet





2

1

3

4



Roy Property

Acres - 434

Water – 169 Ac. Ft., Ecology – 363.35 Ac. Ft.

Improvements:

REMOVED CATTLE

Weed Control:

Mechanical

Chemical

Biological, through WSU Entomology Grant

Revegetation:

Approx. 60 acres reseeded to native grasses

Basin Wildrye, Bluebunch Wheatgrass, Sandberg Bluegrass

Woody Plantings:

Approx. 1,000 plants along Moxee Slough

Black Cottonwood

Pacific Willow

Shrub Willow, Coyote & McKenzie

Redosier Dogwood

Golden Current

Woods Rose

McCormack Property

Acres – 145.93

Water – 60 Ac. Ft.

Improvements:

REMOVED CATTLE

Weed Control:

Mechanical

Chemical

Biological, through WSU Entomology Grant

Revegetation:

Approx. 15 acres reseeded to native grasses

Basin Wildrye

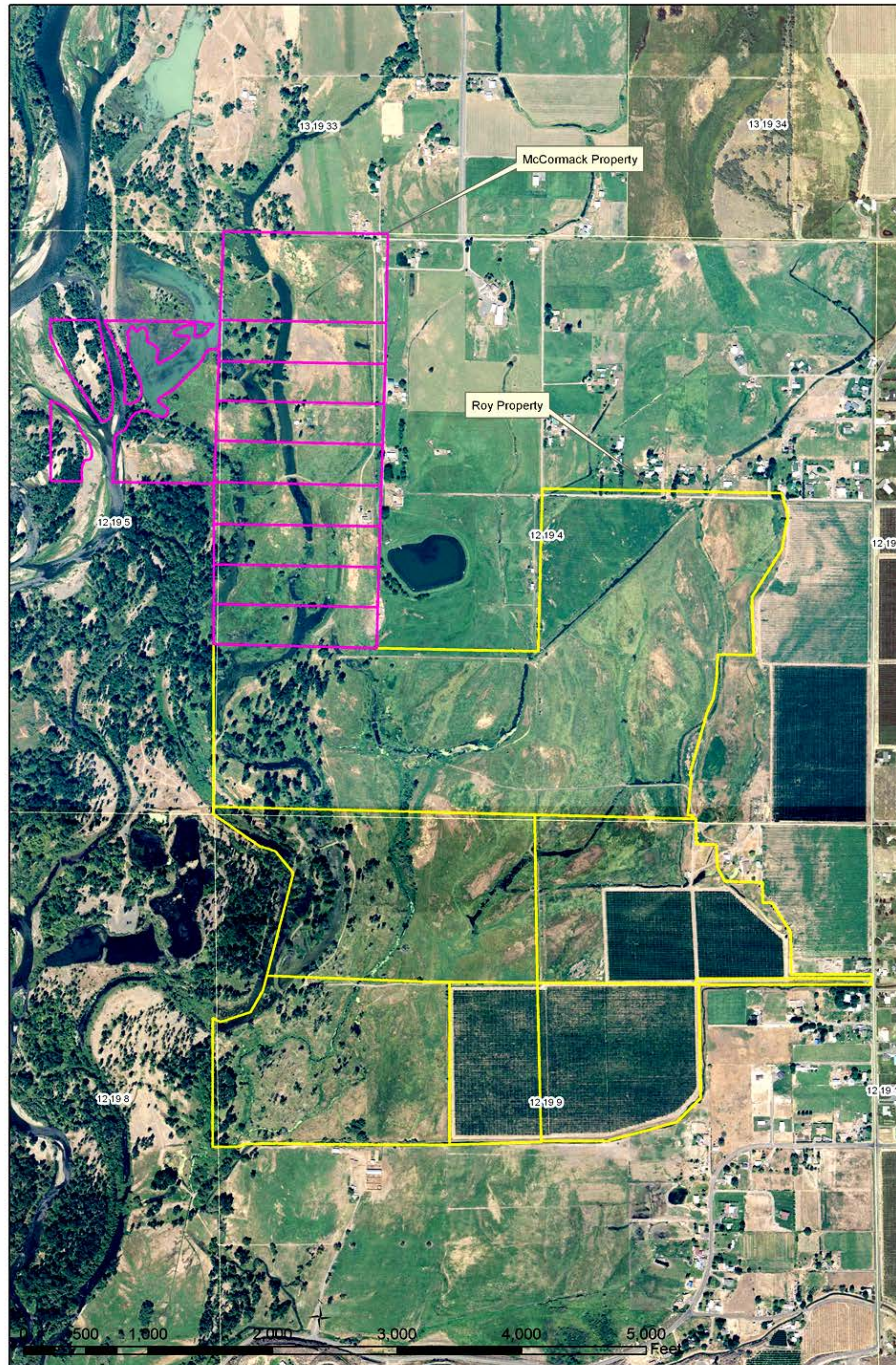
Bluebunch Wheatgrass

Sandberg Bluegrass

Real Property Removal

Double Wide, House, Garage, Out Buildings

Union Gap Property

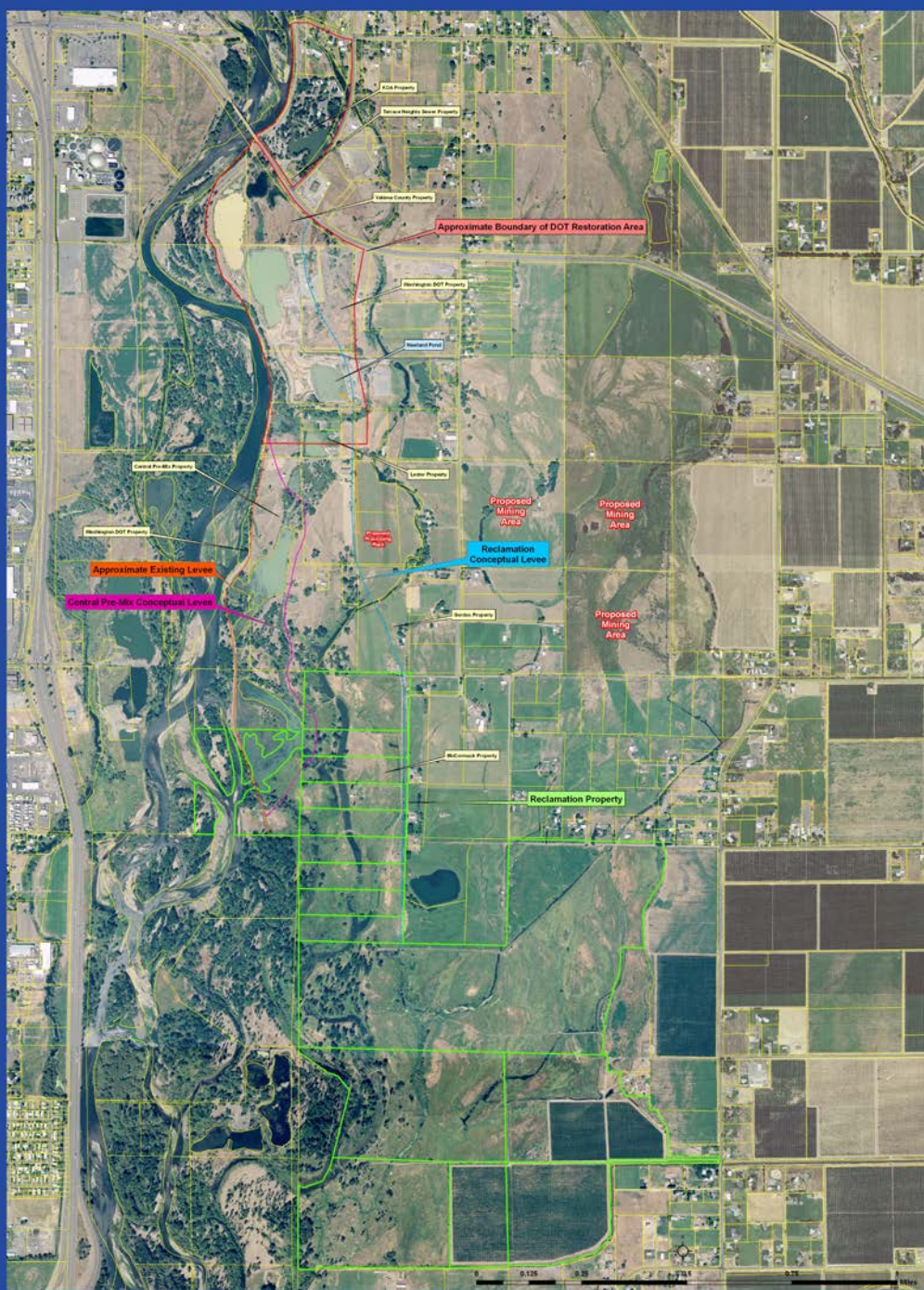












This information graphic is intended for informational purposes only. It is meant to assist in future business decisions in other respects. It does not constitute an offer of insurance or any other financial product. It is not intended to be used as a substitute for professional advice. It is not intended to be used as a substitute for professional advice. It is not intended to be used as a substitute for professional advice.

Selah - Union Gap Reach

RECLAMATION

Jeff Graham
Habitat Resource Specialist
Bureau of Reclamation
Office – (509) 575-5848, ext 287
jgraham@pn.usbr.gov