

Cascade Land Conservancy
Yakima Basin Aquatic Science & Management
Conference
June 15, 2005

- About CLC and Initiatives
- The *Cascade Agenda*

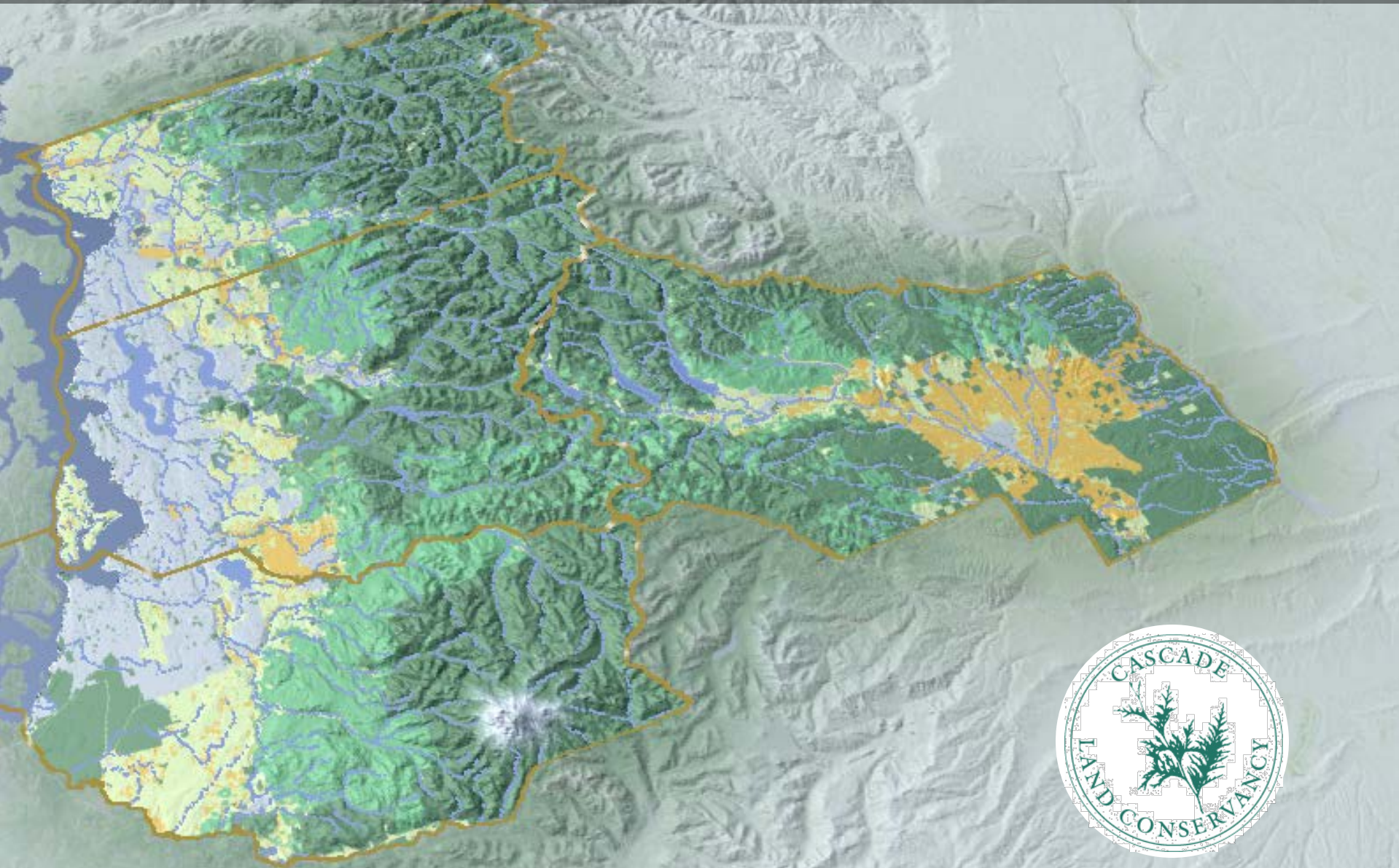
Anne Watanabe

Kittitas County Conservation Director



Cascade Land Conservancy:

Where we live, work, and raise our families



Protecting our region's natural treasures



Cascade Land Conservancy Mission

To protect our region's wild and open space lands to sustain the natural beauty and health of the environment, now and for generations to come.



Cascade Land Conservancy

- **Conservation Strategies:**
- Land Donations
- Land Purchases
- Conservation Easements
- Brokered Agreements



Cascade Land Conservancy

- **Guiding Principles:**
- Negotiate with willing parties
- Diverse Partnerships/Interests
- Innovative and entrepreneurial approaches
- Maximize the ecological value of land while meeting the needs of landowners



A landscape photograph showing an estuary with a river winding through marshy areas. In the background, there are mountains under a cloudy sky. The foreground is dominated by tall grasses and a large log.

**Estuary Program:
2200 acres conserved
on Olympic Peninsula**

**Salmon habitat
Regional economy
Regional identity**



Cascade Foothills Initiative

Jobs

Community

Recreation

Economy

Cascade Foothills Initiative

Conserve:

- 600,000 acres of small rural woodlots and industrial forest in the Cascade foothills
- maintain traditional way of life
- protect regional water quality
- wildlife habitat & fishery resources

TODAY: 101,000 ACRES CONSERVED



Green Cities

Working in partnership with our regions cities to restore our urban parks, protecting a legacy of parks for future generations to enjoy.



A photograph of a dense forest with tall, moss-covered tree trunks and a thick carpet of green ferns on the forest floor. The scene is vibrant and natural.

Stewardship

20,000 acres

Fee owned

Conservation & Stewardship Easements

Kittitas County Priorities

- **Forest Lands**
- **Recreation Access**
- **Agricultural Lands**
- **Shrub Steppe – Big Game**
- **Development + Conservation**
- **Economic Development**





**Kittitas County
Hidden Valley Ranch:
40 acres on Swauk Creek**

**Teanaway Ranch:
80 acres conserved near
Teanaway**



I-90 Corridor Acquisitions – Lake Easton

Forest Legacy grant - Teanaway

SRFB grants - Teanaway

Recreation access – Upper county

Ag Lands

Diverse interests

Conservation on a regional scale

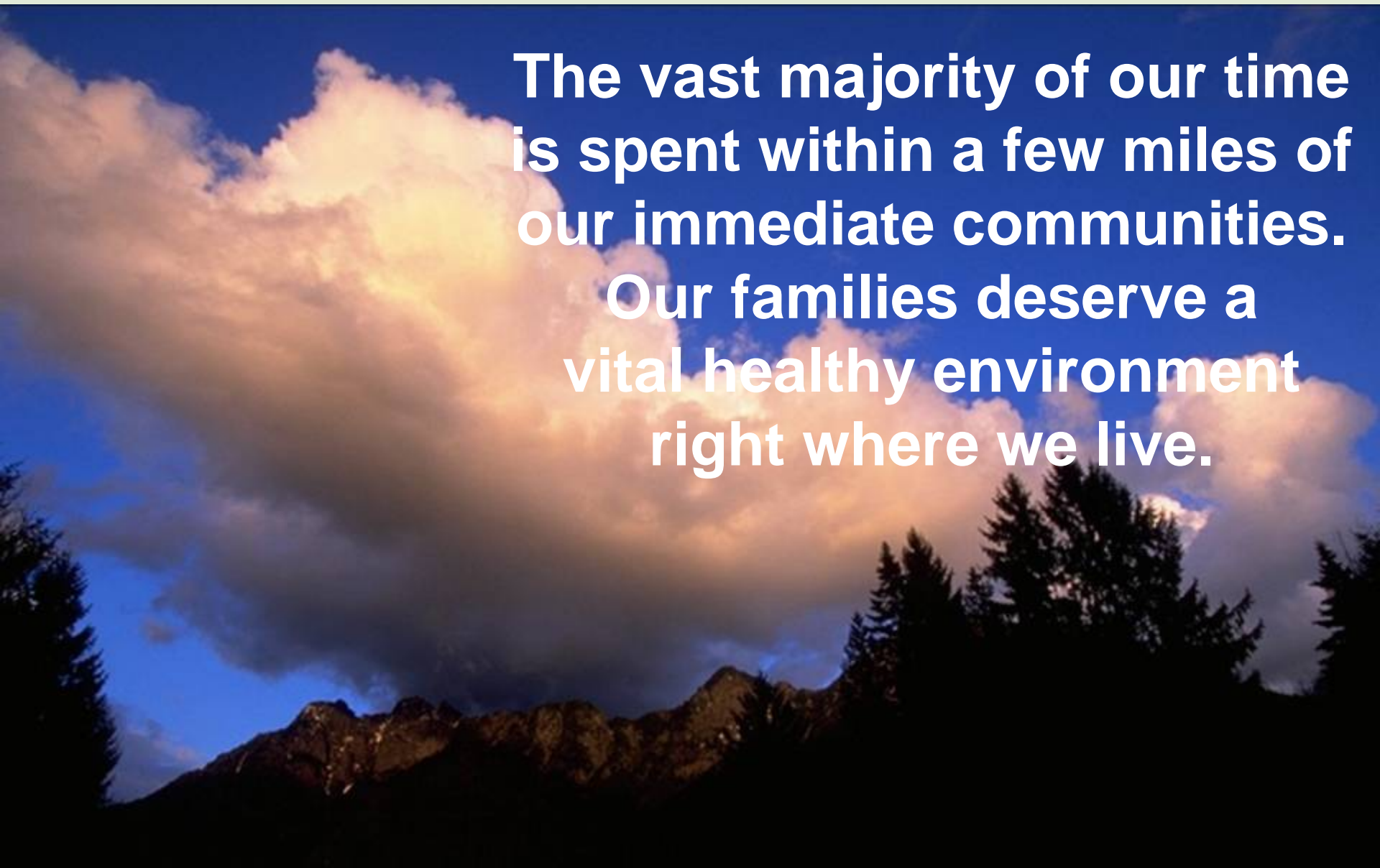
An aerial photograph of a region, likely in the Southeastern United States, showing a complex network of waterways and land. A white outline delineates the regional boundary. A specific area within this region is highlighted in a lighter green color, indicating the focus of conservation efforts. The terrain is a mix of forested hills and open land.

CLC Achievements

- 120 projects
- 110,000 acres protected
- \$26 M value

Conservation on a regional scale

The vast majority of our time is spent within a few miles of our immediate communities. Our families deserve a vital healthy environment right where we live.





100 Years Forward

THE CASCADE
AGENDA



The Cascades that inspire us



The Waters that sustain us



The Communities that define us



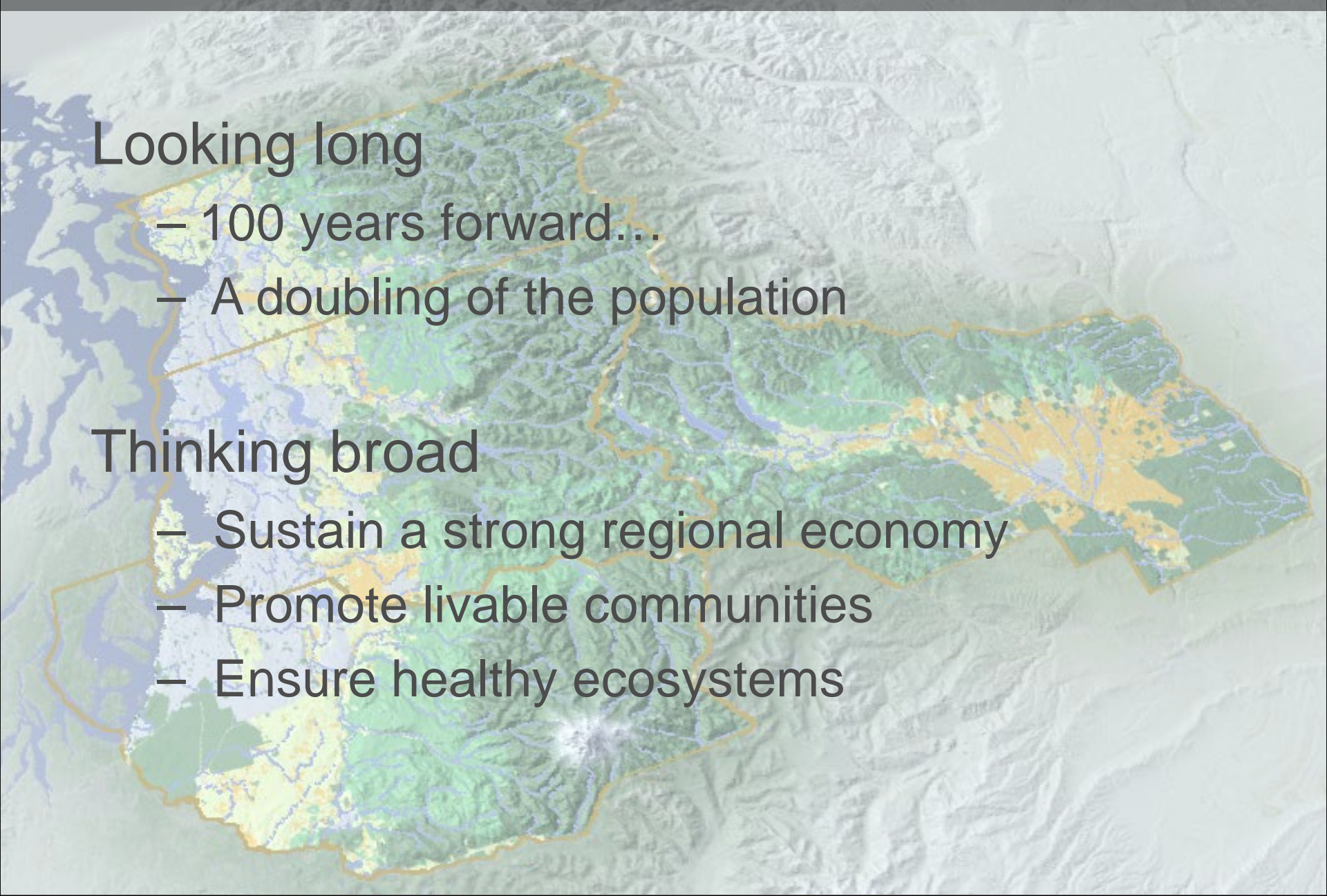
The Cascade Agenda Approach

Looking long

- 100 years forward...
- A doubling of the population

Thinking broad




- Sustain a strong regional economy
- Promote livable communities
- Ensure healthy ecosystems

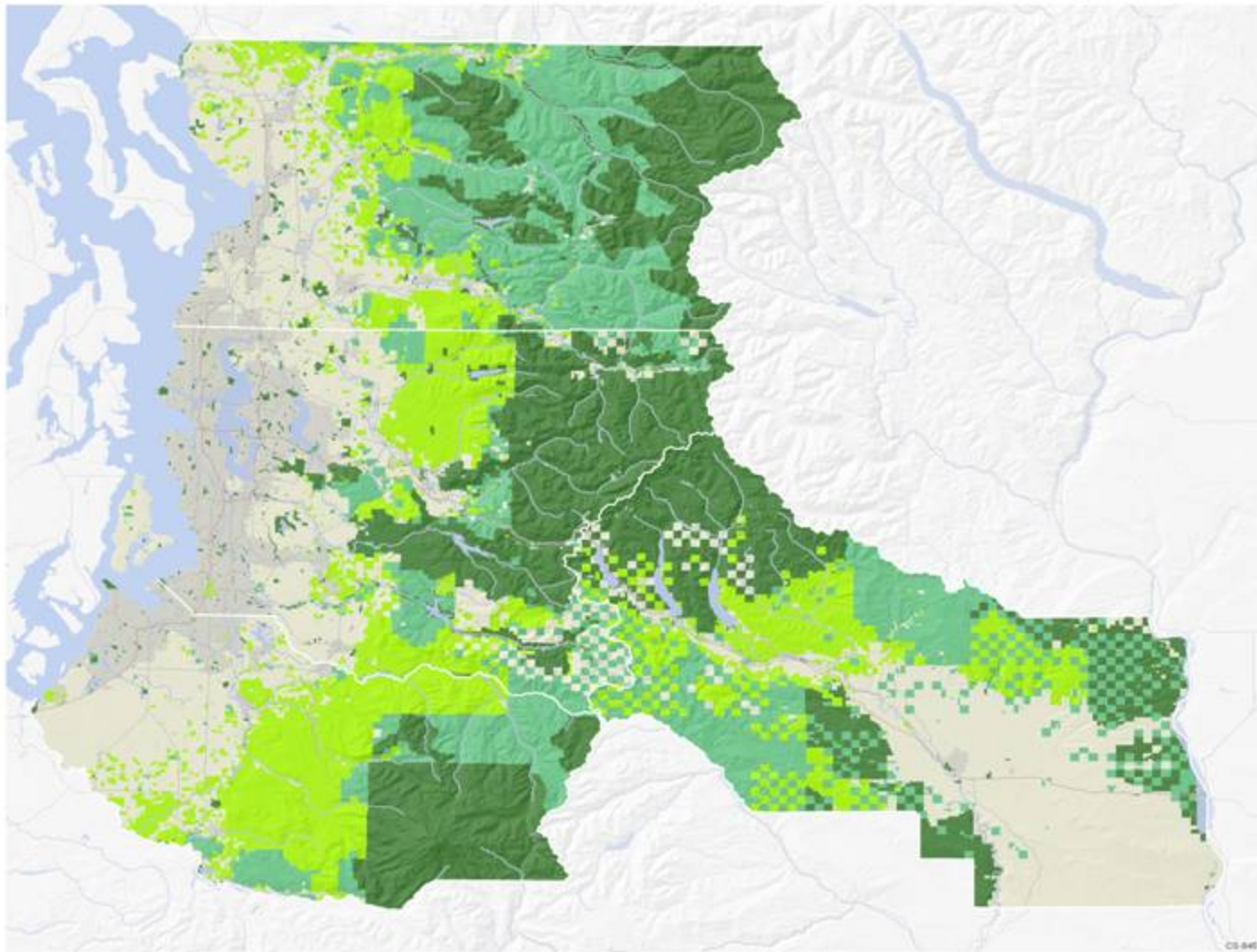


Cascades that inspire us...



Working Forest and Conservation Lands

-  Private working forest lands as derived from current use and ownership information maintained by county assessors' offices
-  Public working forest lands as derived from the Washington Protected Lands Database
-  Public conservation lands as derived from the Washington Protected Lands Database

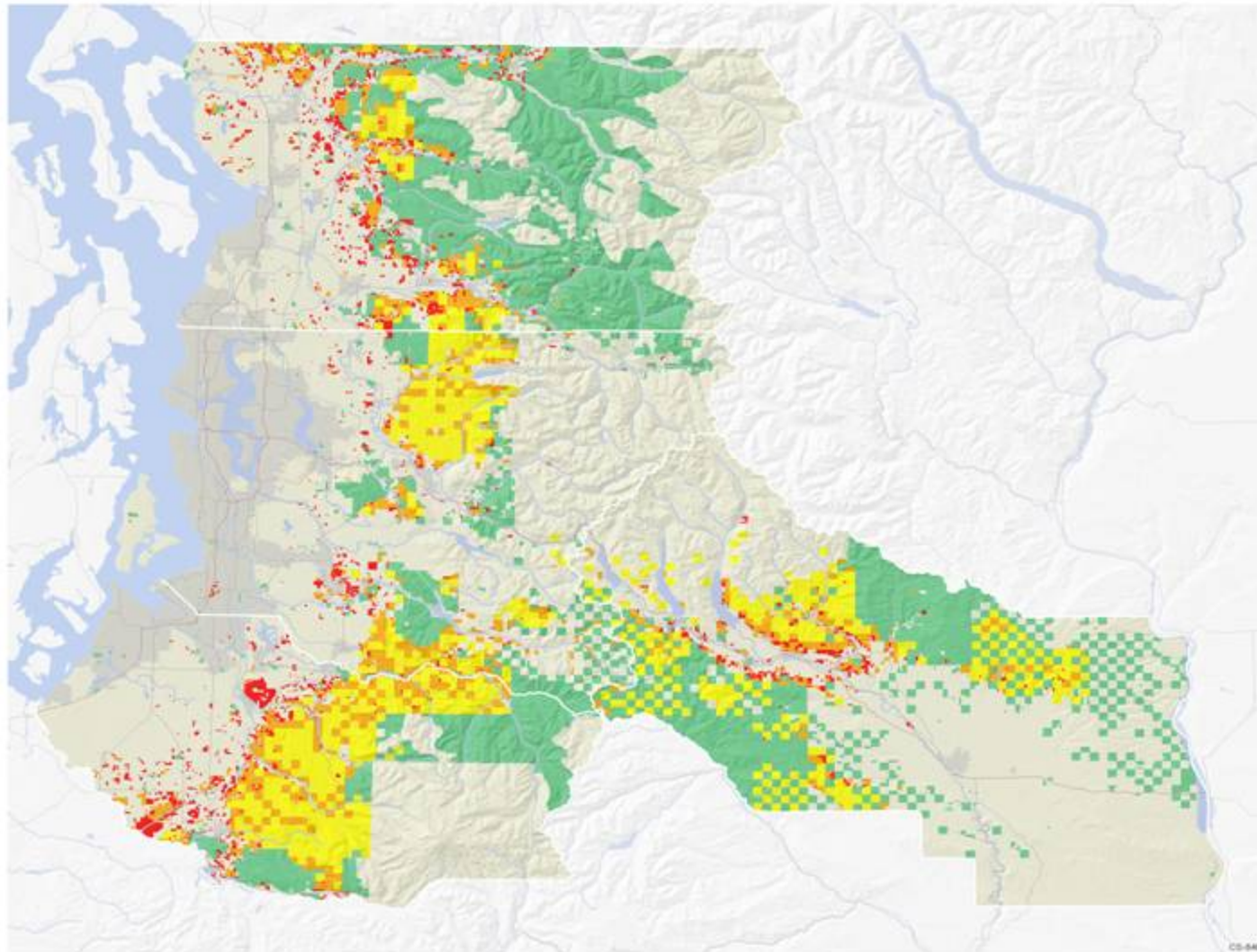


Private Working Forest Lands by Parcel Size

Private working forest lands as derived from current use and ownership information maintained by county assessors' offices

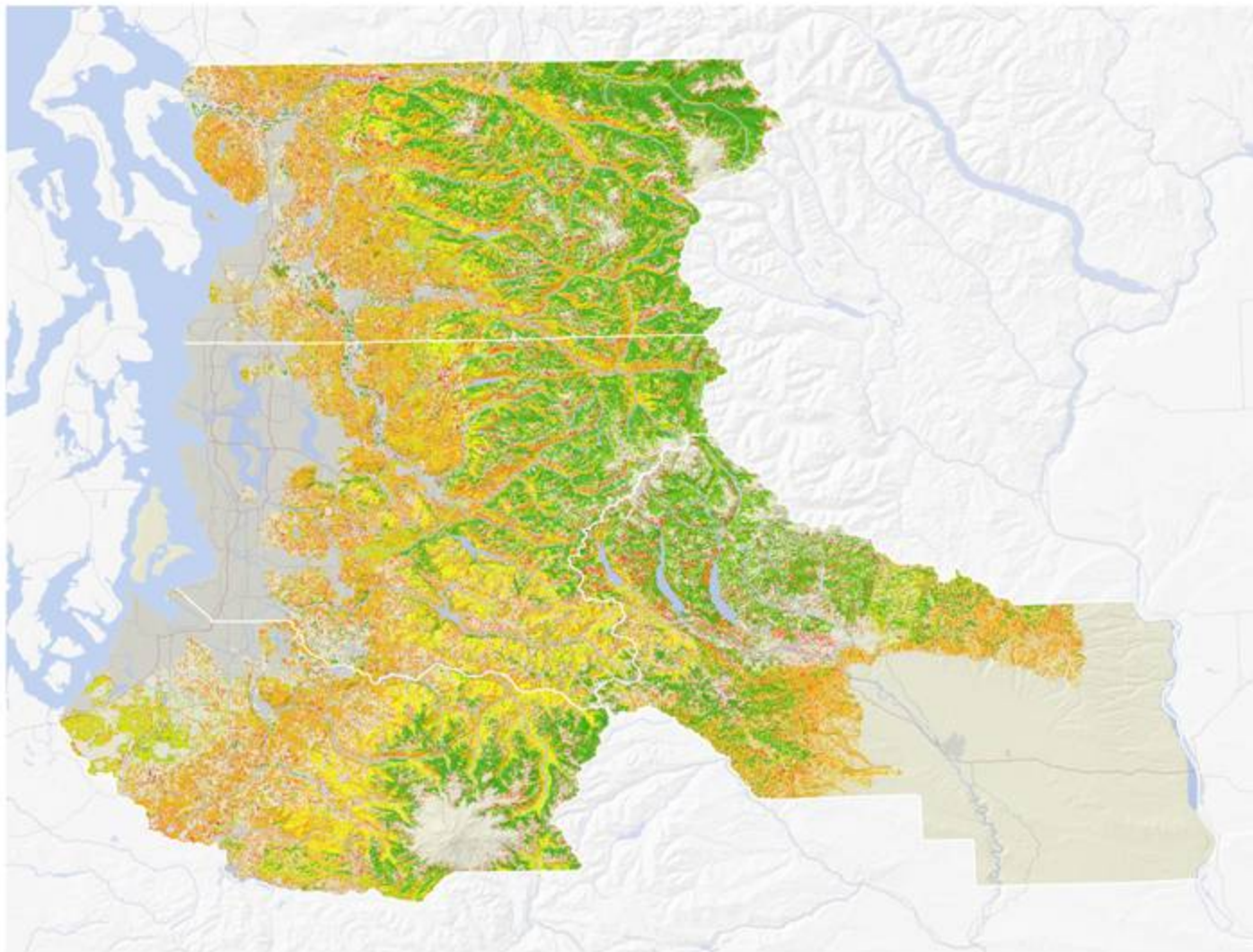
■ Parcel size <80 acres ■ Parcel size 81-499 acres ■ Parcel size >500 acres

■ Public working forest lands as derived from the Washington Protected Lands Database



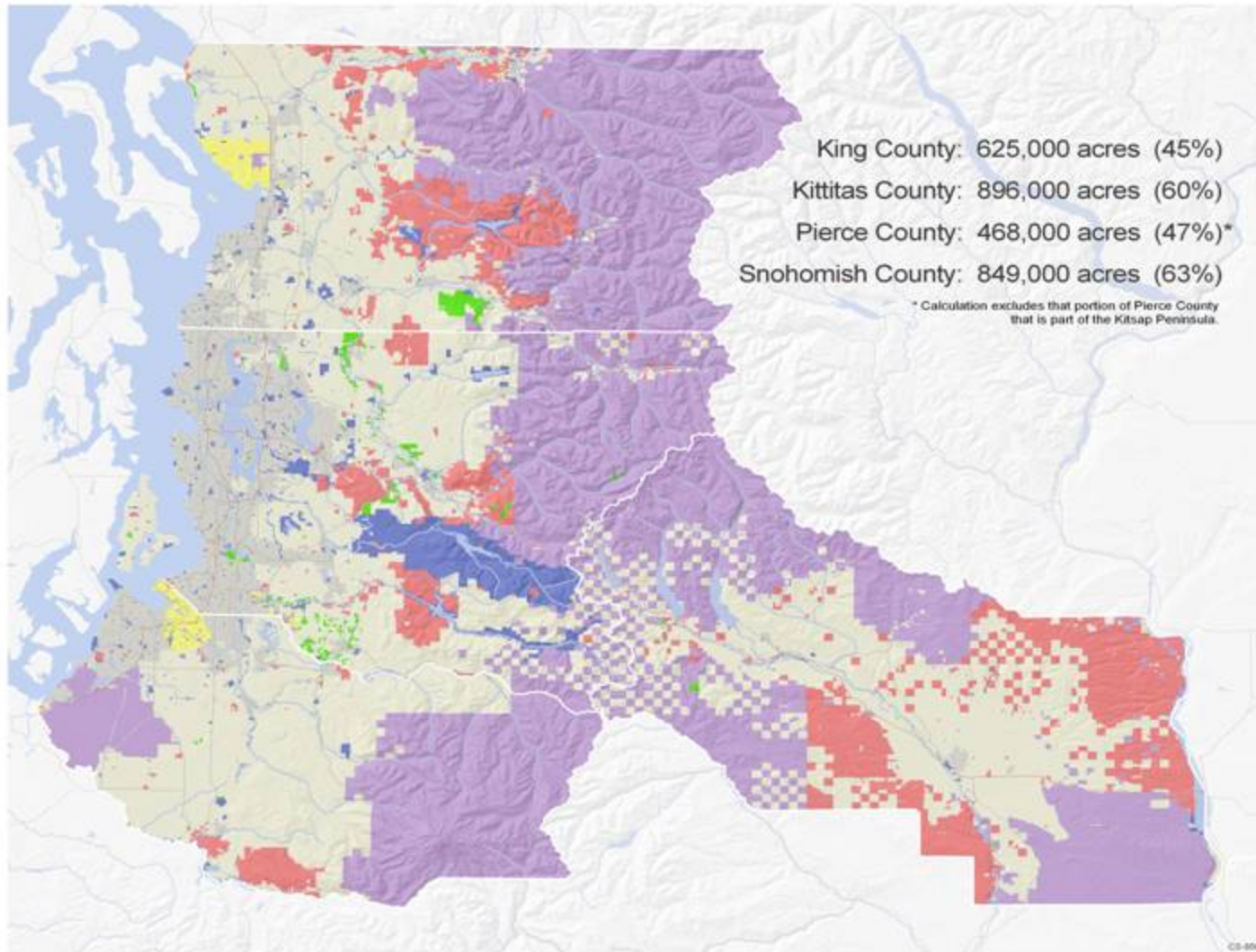
Coniferous Forest Stand Age

Stand age class data provided by the Conservation Biology Institute



Public and Protected Lands

Land ownership, protection status and acreage derived from the Washington Protected Lands Database



CASCADES: GOALS

Large, intact, diverse forest landscapes

Timber economy

Habitats & Corridors

Watersheds

Recreation

CASCADES: BENCHMARKS

* Retain existing forest lands = 3.3 million acres

Retain existing private working forests
– 2004 = 830,000

Expect 3% conversion (20,000)

CASCADES: Strategies

Partner with timber companies to conserve or acquire

TDRs & Conservation Buyers

Small landowner support

New revenue streams

- Carbon sequestration (mitigation funding)
- Biosolids application (revenues)

Communities that define us...



- Built Environment
- Agriculture Lands
- Parks

Built Environment

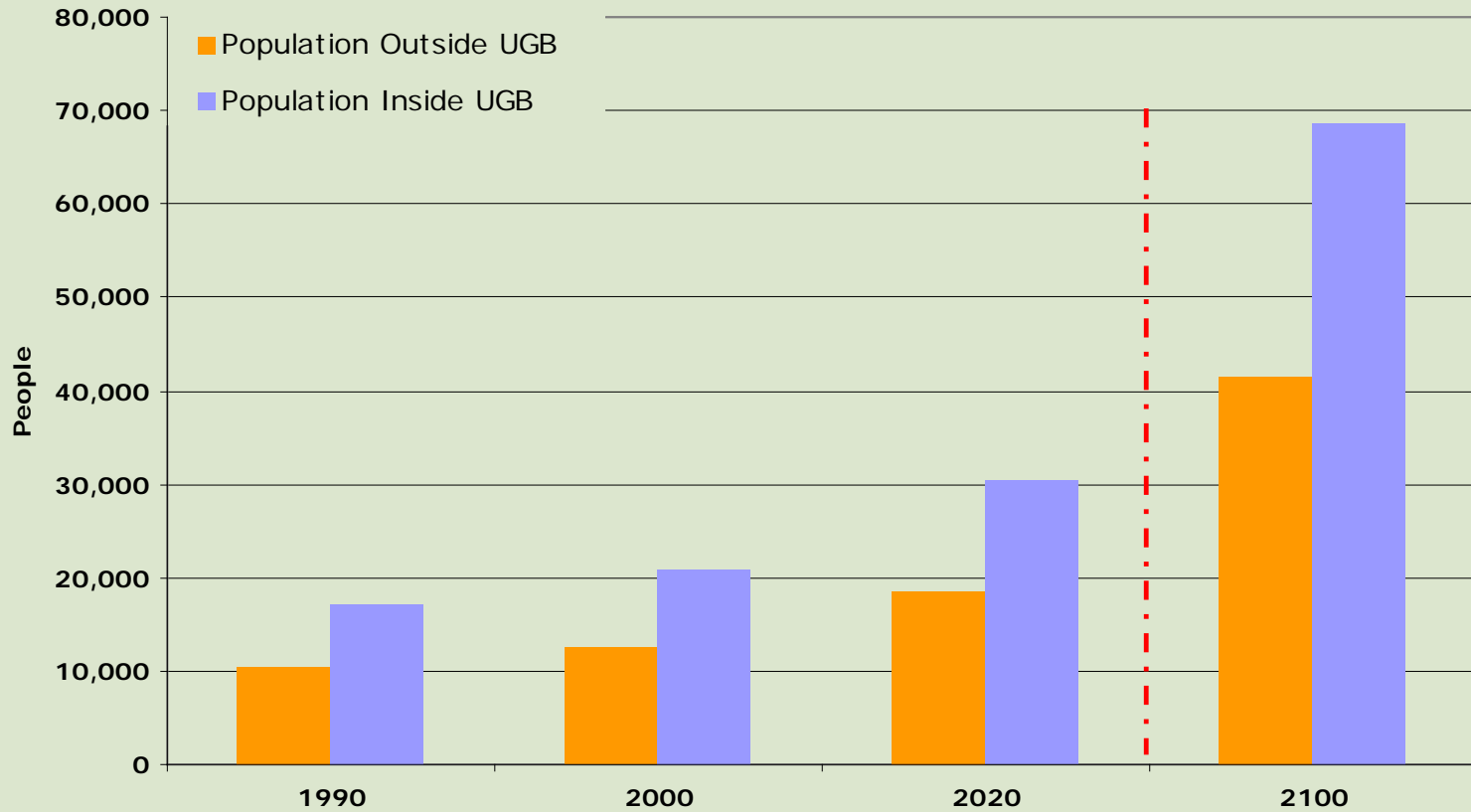
What we have to work with...



KEY:

Conservation and development
of the built environment are two
sides of the same coin


Historical and Projected Population Growth in the Urban and Rural Areas: Kittitas County 1990 - 2100

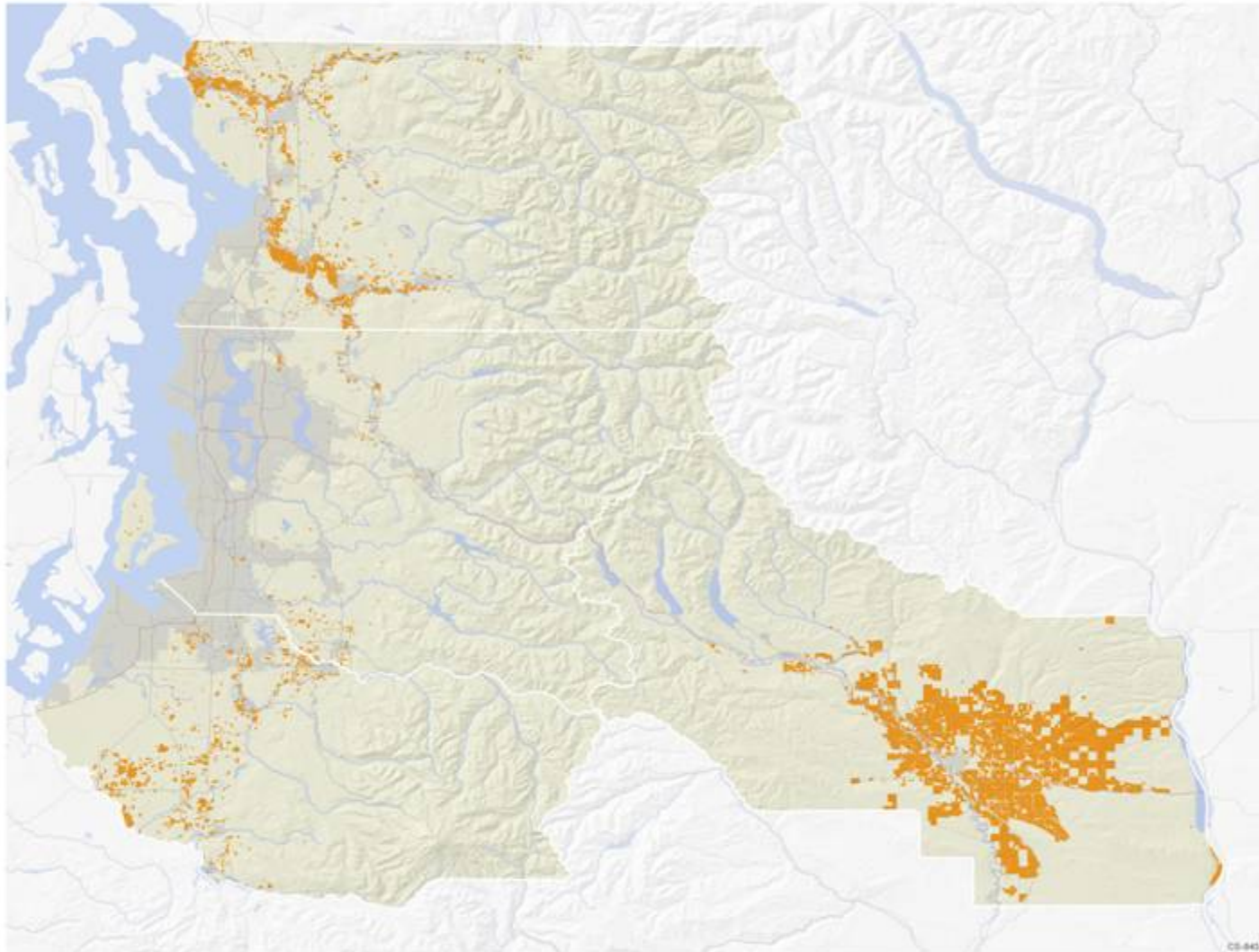


Agricultural Lands



Agricultural Lands

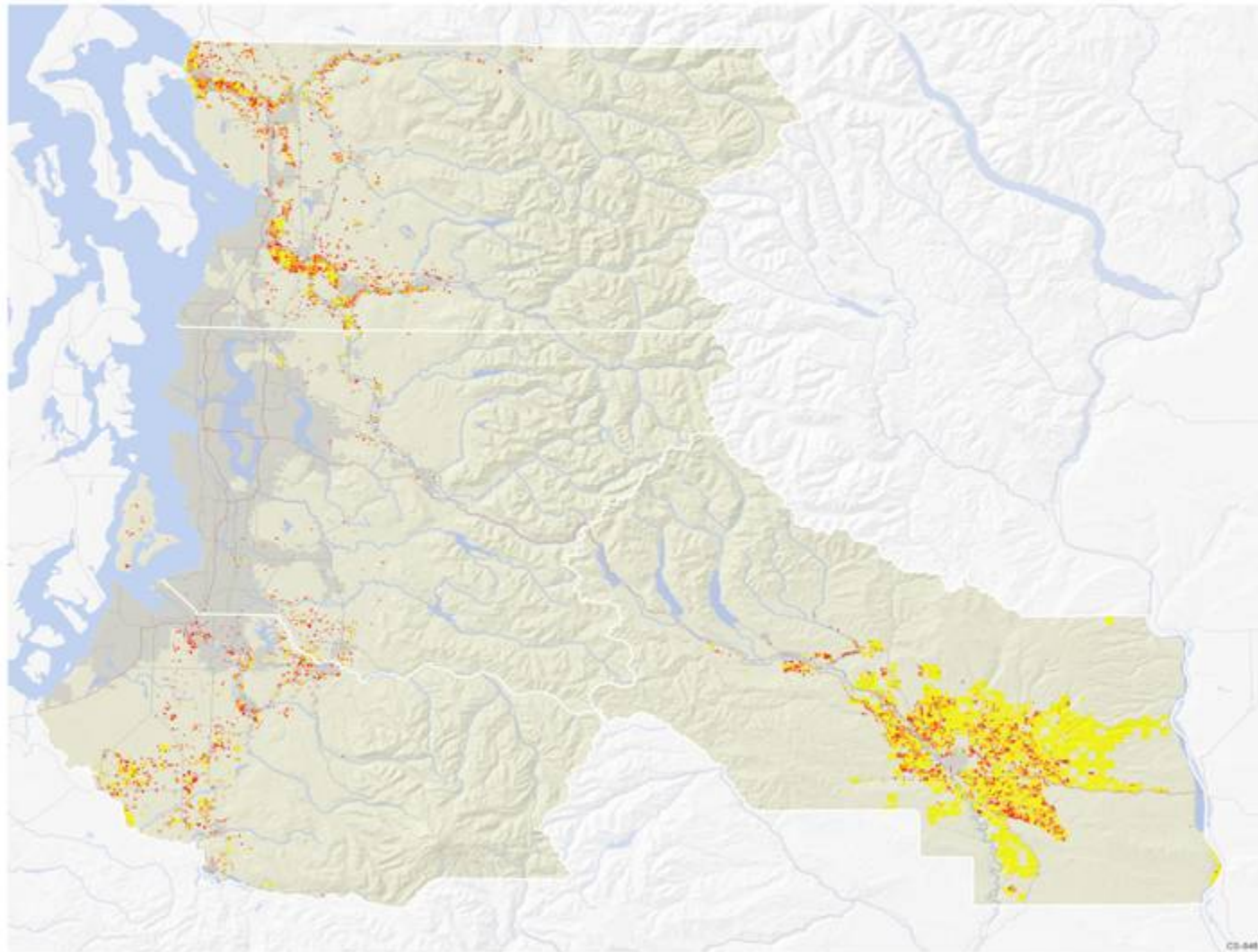
 Agricultural lands derived from current use information maintained by county assessors' offices



Agricultural Lands by Parcel Size

Agricultural lands derived from current use information maintained by county assessors' offices

■ Parcel size <20 acres ■ Parcel size 21-45 acres ■ Parcel size >46 acres



CS-048



Agriculture & Built Environment Goals

- *Purchase, transfer or cluster development rights to conserve (farm) lands identified as priorities in each community
- *Maintain economic viability of farms
- *Vibrant Communities

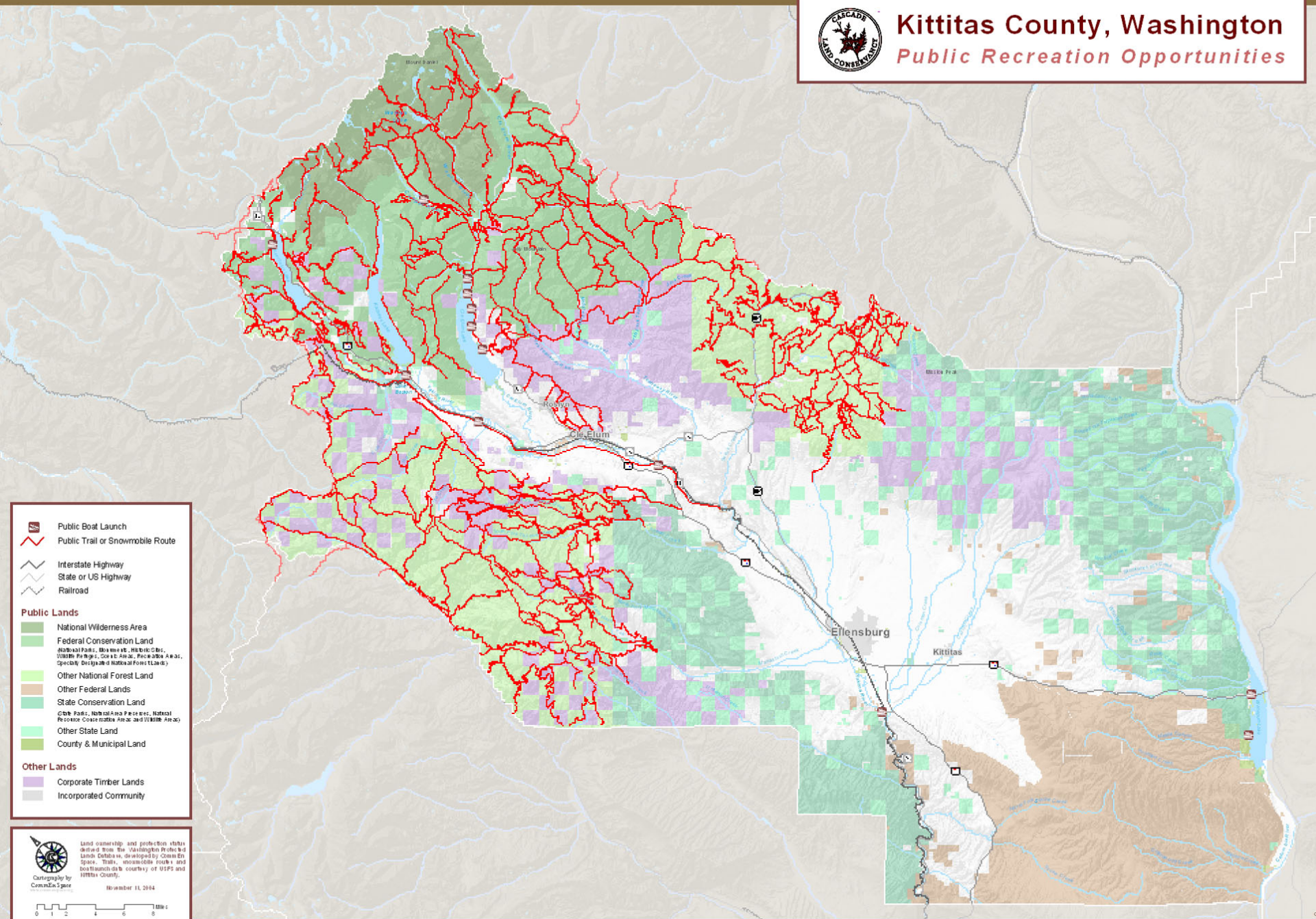
Parks





Kittitas County, Washington

Public Recreation Opportunities




-  Public Boat Launch
-  Public Trail or Snowmobile Route
-  Interstate Highway
-  State or US Highway
-  Railroad

Public Lands

-  National Wilderness Area
-  Federal Conservation Land
National Parks, Monuments, Historic Sites, Wildlife Refuges, Coast Areas, Recreation Areas, Special Designated Natural Forestlands
-  Other National Forest Land
-  Other Federal Lands
-  State Conservation Land
State Parks, National Area Preserves, National Recreation Conservation Areas and Wildlife Areas
-  Other State Land
-  County & Municipal Land

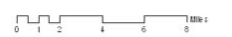
Other Lands

-  Corporate Timber Lands
-  Incorporated Community

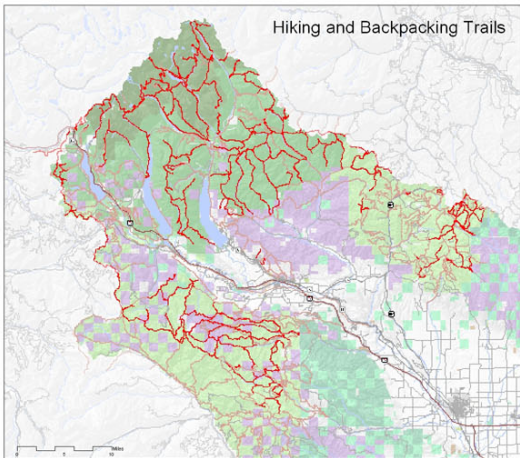
 Land ownership and protection status derived from the Washington Protected Lands Database, developed by Clean Environment, Trails, and Recreation, and boat launch data courtesy of WSPS and Kittitas County.

Cartography by
Cascadia Land Conservancy

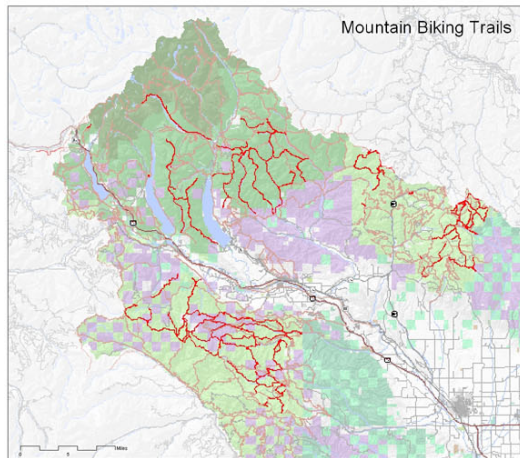
November 11, 2014



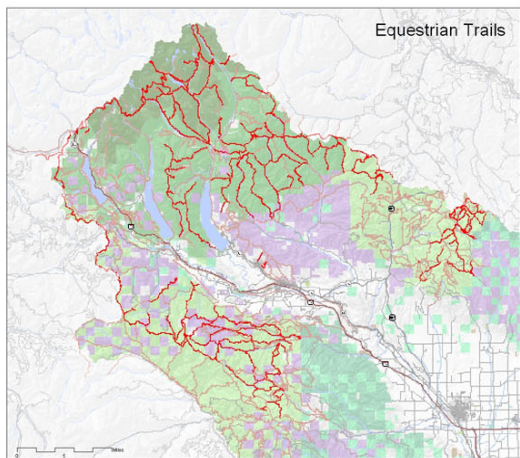
Hiking and Backpacking Trails



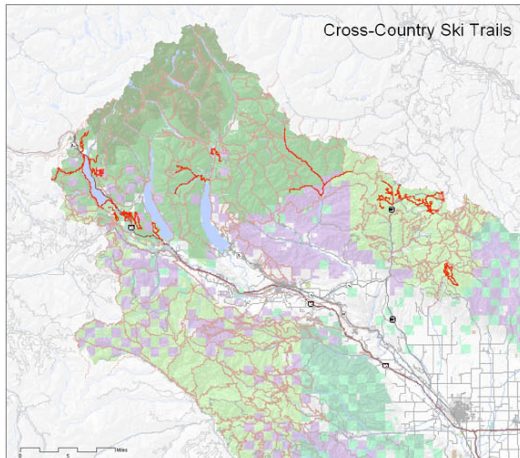
Mountain Biking Trails



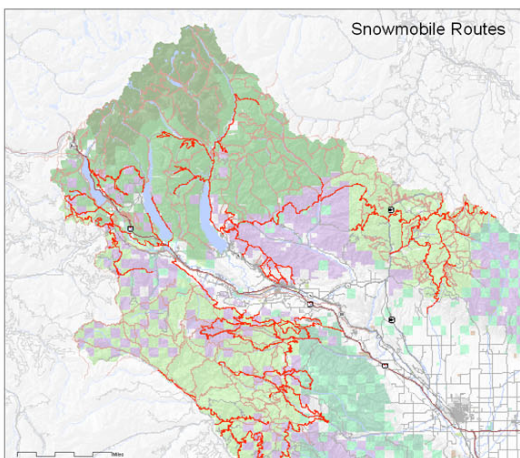
Equestrian Trails



Cross-Country Ski Trails

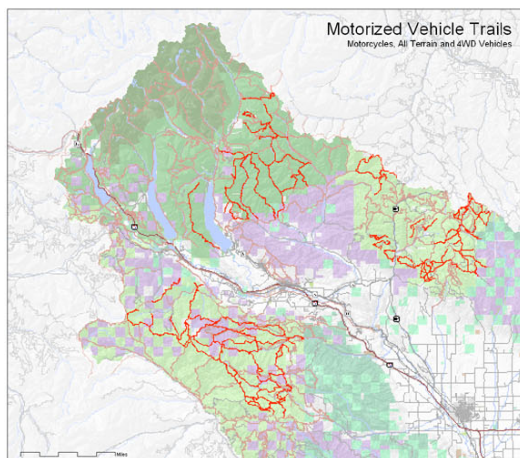


Snowmobile Routes



Motorized Vehicle Trails

Motorcycles, All Terrain and 4WD Vehicles



Waters that inspire us...



Waters:

The hydrologic cycle ties together:

COMMUNITIES

ECONOMIES

LANDSCAPES

Waters: CHALLENGES

3 LEVELS:

- 1) Stream corridor (water quality, barriers, dams, dikes, diversions, withdrawals, etc)
- 2) **Land use around waters** (forestry, ag, mining, recreation, landscaping, conversion, erosion, impervious surfaces, etc.)
- 3) Global impacts on water systems

Watershed Threats:

Population

Land development

Uncertain & unpredictable

Waters: How do we measure these challenges?

Salmon = key indicator

More to learn about land uses and salmon habitat and survival

Watershed health: Key Metrics

- 1) Amount of high quality habitat surrounding and draining into riparian corridors
- 2) Amount of Impervious surfaces

Impervious surfaces

Runoff

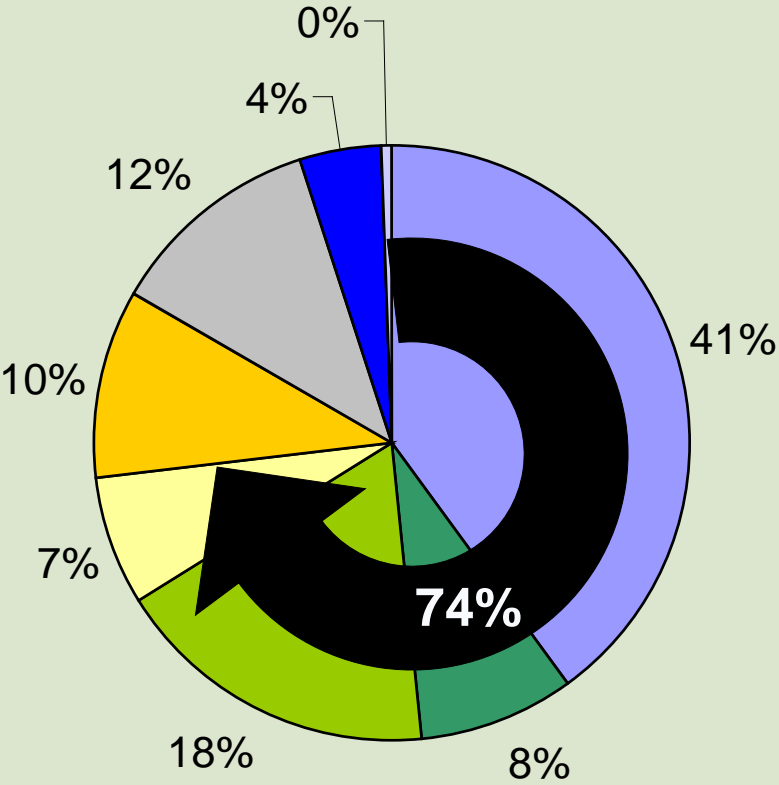
Increased stream flow/velocity

Decreased flood attenuation

Erosion

Decreased water quality, etc.

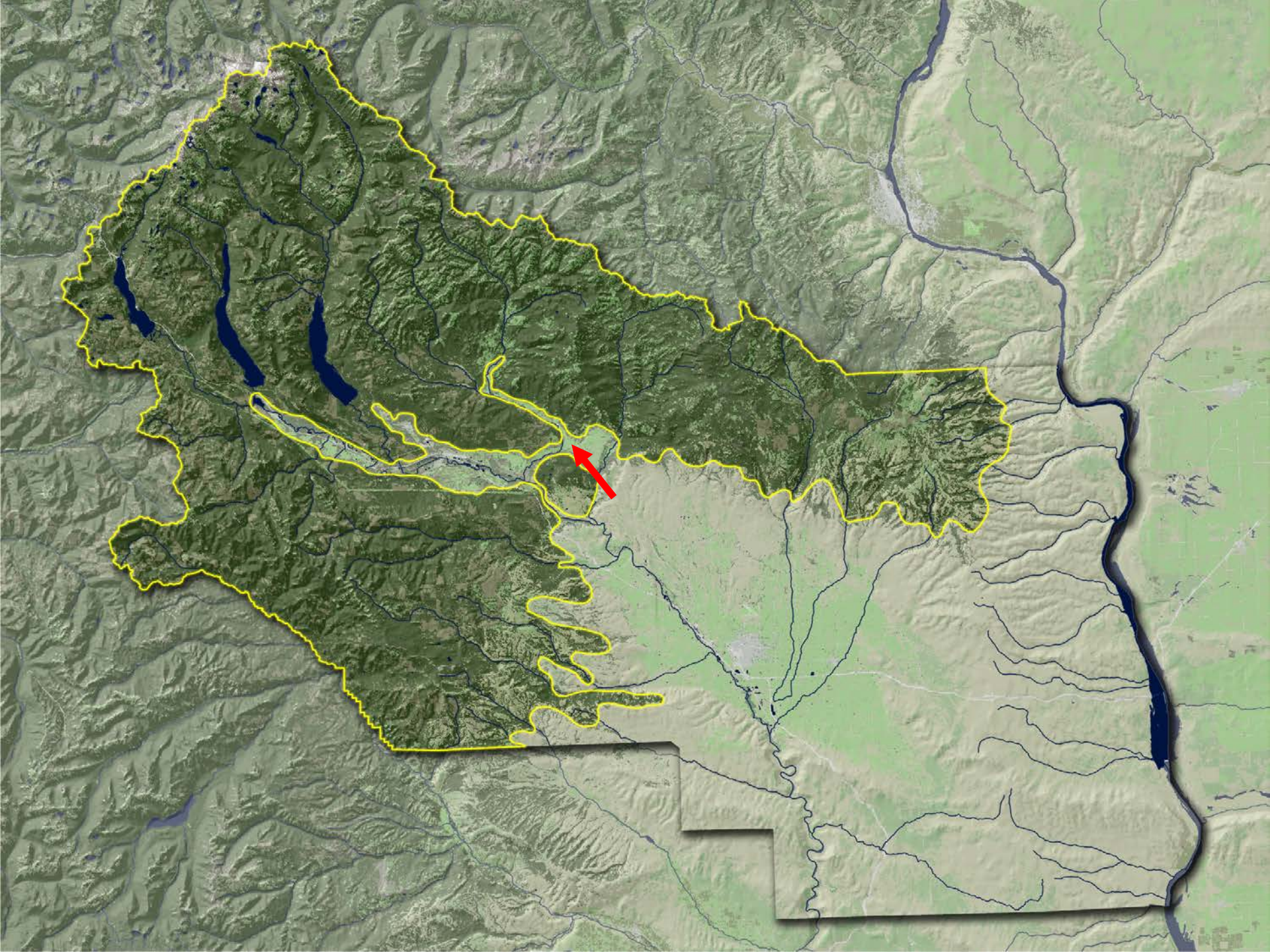
Regional Watershed Land Use

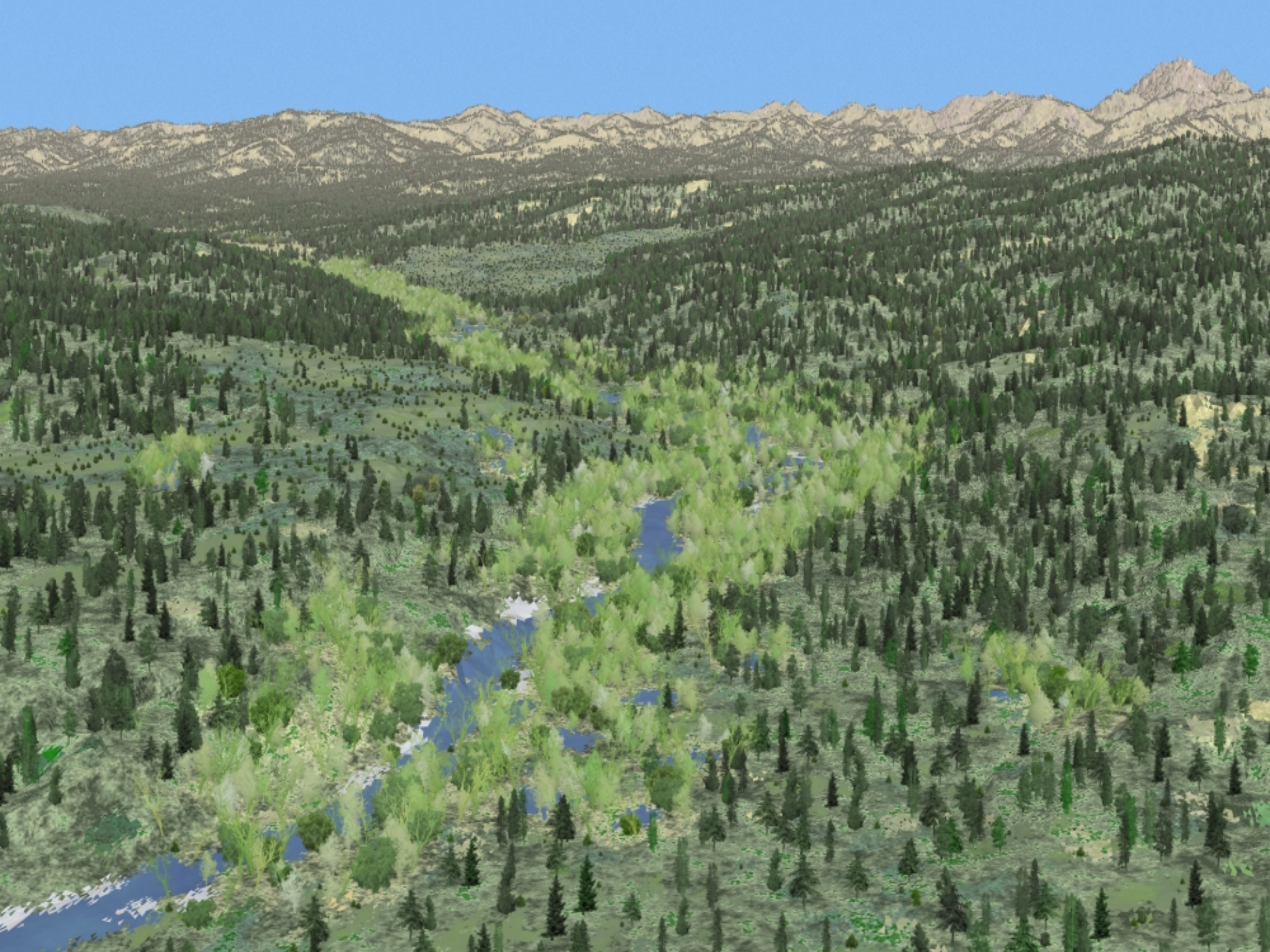


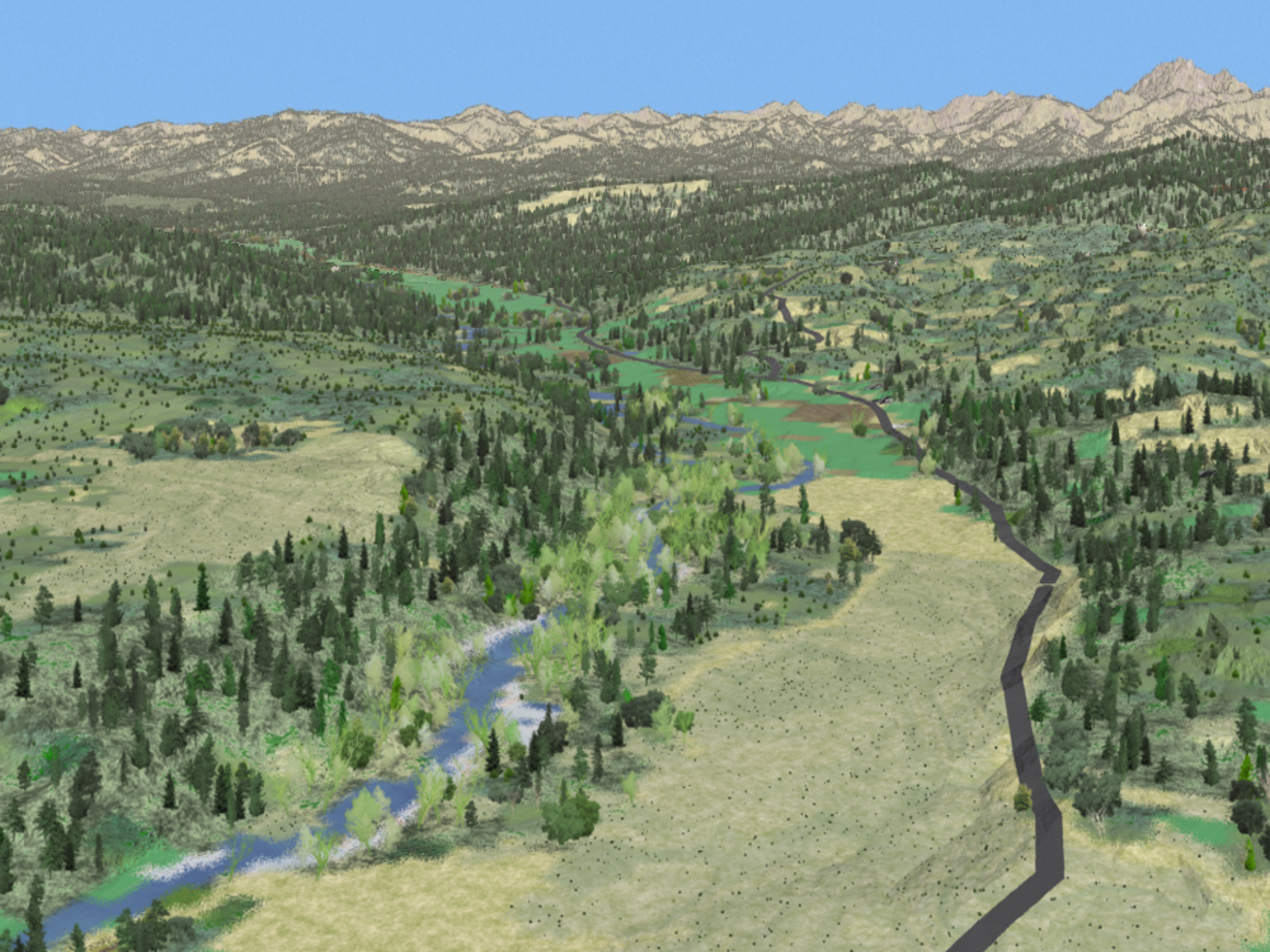
- Public Protected
- Public Working Forest
- Private Working Forest
- Agriculture
- Rural
- Urban
- Other Public
- Other

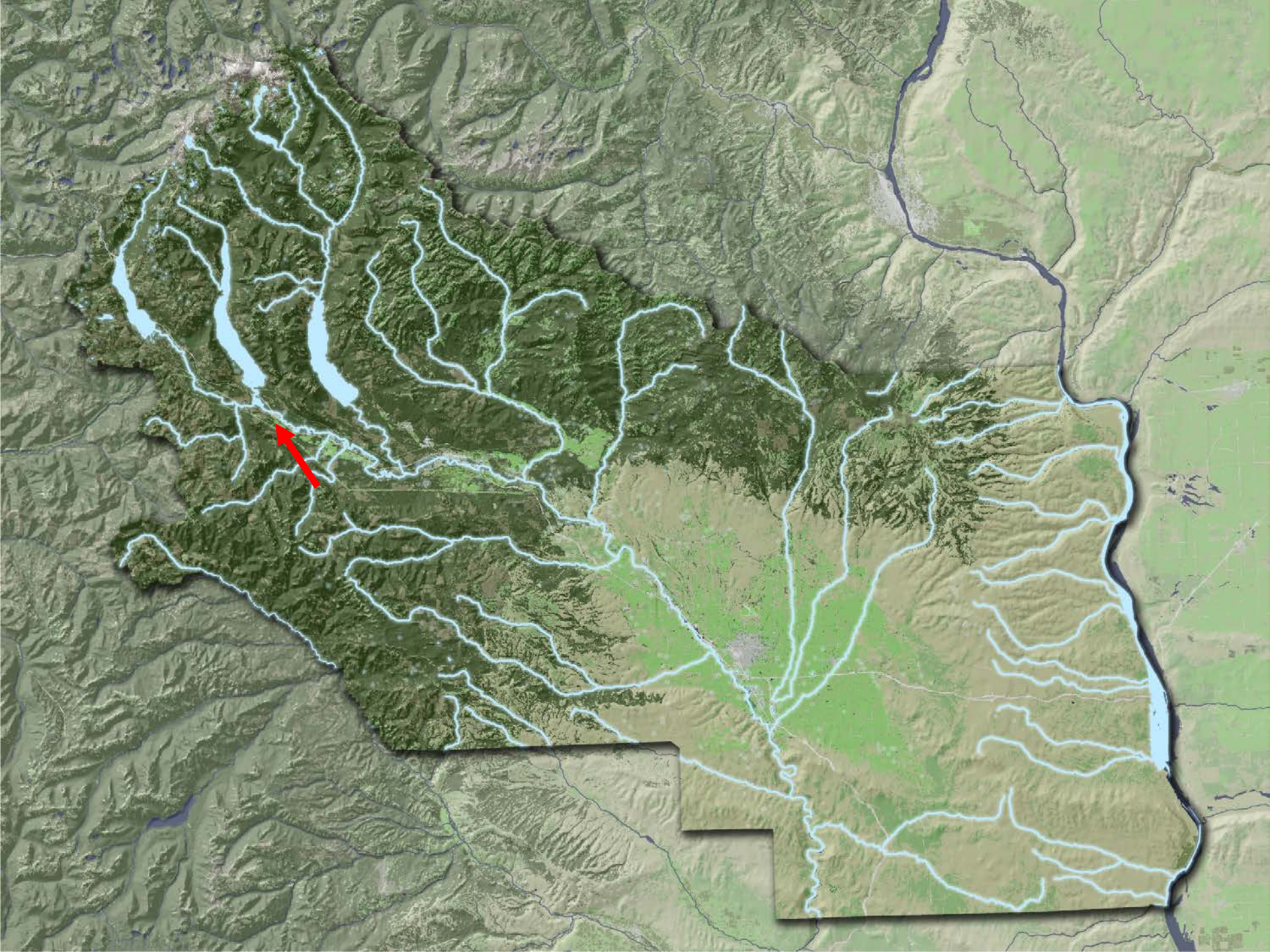
Watershed Health:

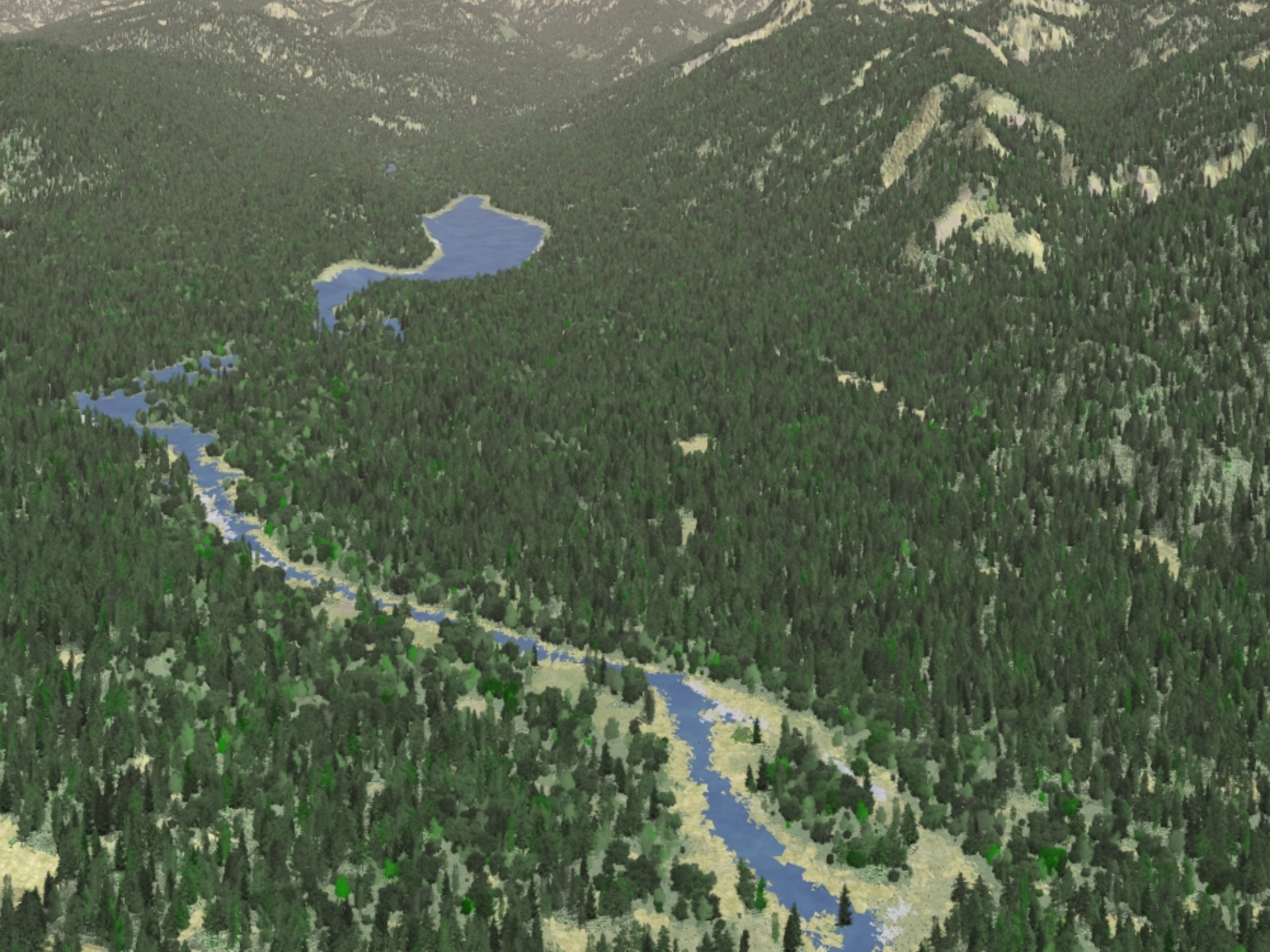
Focus on the 22% in rural and urban lands where population growth will occur

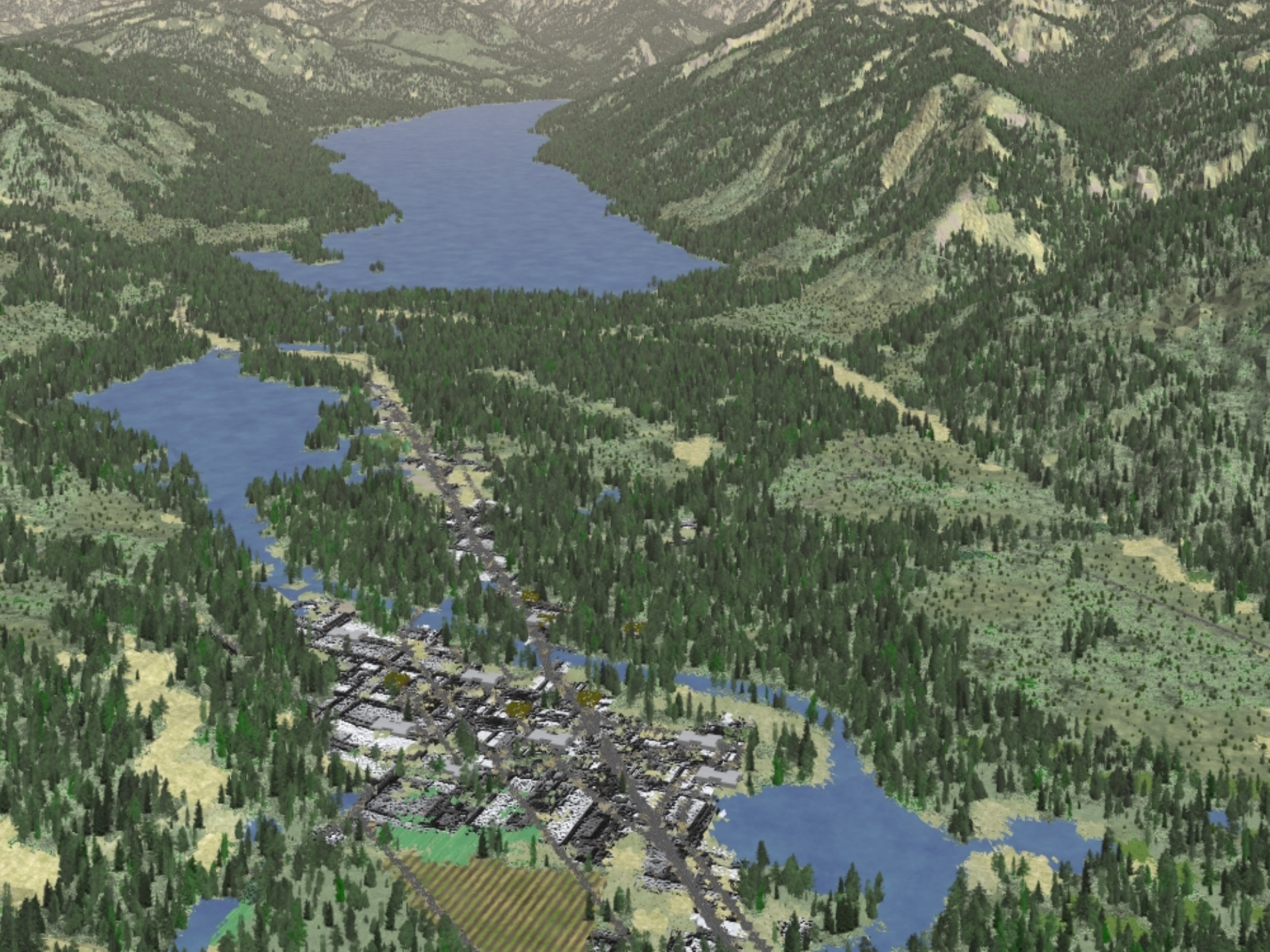












Water Goals

Resourced land owner incentives programs

Prevent impervious surfaces in upper watersheds

Improve instream flows in headwater tribs

Expand water/river front parks

Improve water quality, fish passage, etc.

Water Benchmarks

- *Protect major watershed landscape via conservation of the cascades, farmlands and parklands = 4 million acres
- *Mitigation technology for impervious surfaces
- *Conserve 19,000 ac of forested riparian corridors
- *5,000 acres of unmodified saltwater shoreline
- *9,000 of high quality estuarine habitat

Water Strategies

Incorporate Priorities

- WRIAs, landowner cooperation

Acquisitions

- More public funding
- TDRs, CEs, developer incentives

Retrofit impervious surfaces with new mitigation
e.g. vegetation along roadways, etc.

Economic Redevelopment

What it all adds up to



Cascade Agenda Outcomes

Save our landscapes for the next century

- 1 million acres private working forests and farms
- 260,000 acres park, natural areas and shorelines

Create Communities for the next century

- Maintain a rural community
 - Enhance the existing agriculture economy
 - Maintain our watersheds, habitat and resource lands
 - Provide housing choices without sprawl
- Transform our cities and revitalize our towns
 - Create vibrant compact, livable communities
 - Provide plentiful, well-cared for parks



Near-Term: Acquire

- Conserve working land base
- Preserve recreation and natural resource lands

Mid-Term: Connect

- Emphasis on restoration of preserved lands
- Programmatic support for private land stewardship
- Community / economic connection to working land

Long-Term: Sustain

- Deploy new revenue streams for working land
- Enhance stewardship of natural resources
- Establish adequate, consistent maintenance funds

A topographic map of a watershed, likely in the Pacific Northwest, showing a network of rivers and streams. The map is overlaid with a salmon recovery tool, which uses a color-coded system to indicate different levels of land conservation or recovery potential. The colors range from green (low potential) to yellow and orange (medium potential) to red (high potential). The text is centered over the map in a large, bold, black font.

**LAND
CONSERVATION
A SALMON
RECOVERY TOOL**



Thank You!

www.cascadeland.org

(509) 962-1654