

# Wenatchee National Forest Naches Ranger District

Naches Ranger District Fisheries Program  
Accomplishments in 2004

Gary Torretta  
District Fisheries Biologist



# 2004 Primary Work Accomplishments

- Fish Distribution Surveys
- Bull Trout and Steelhead Trout Redd Surveys
- Riparian and Fisheries Habitat Restoration
- Monitoring of Restoration and other Forest Projects
- Environmental Education
- Coordination with other Fishery Management Agencies



# Fish Distribution Surveys

## North Fork Tieton River

Objective was to gain better information on the distribution of bull trout, in light of a BOR proposal to improve fish passage at Clear Lake Dam

Night Snorkeled (census) 7 miles of river from Clear Lake to Tieton Meadows

Cooperative survey accomplished by USFWS, WDFW, USFS, and BOR

Found 13 bull trout of multiple age classes up to end of survey



# N.F. Tieton River



# Bull Trout Spawning Surveys

- Inter-agency effort between WDFW, USFS, FWS, and BOR
- About 33 miles of index areas surveyed in 2004



# Bull Trout Spawning Surveys

Index area on S.F. Tieton River increased by 1.5 miles in 2004 after extensive surveys in 2003



# Steelhead Spawning Surveys



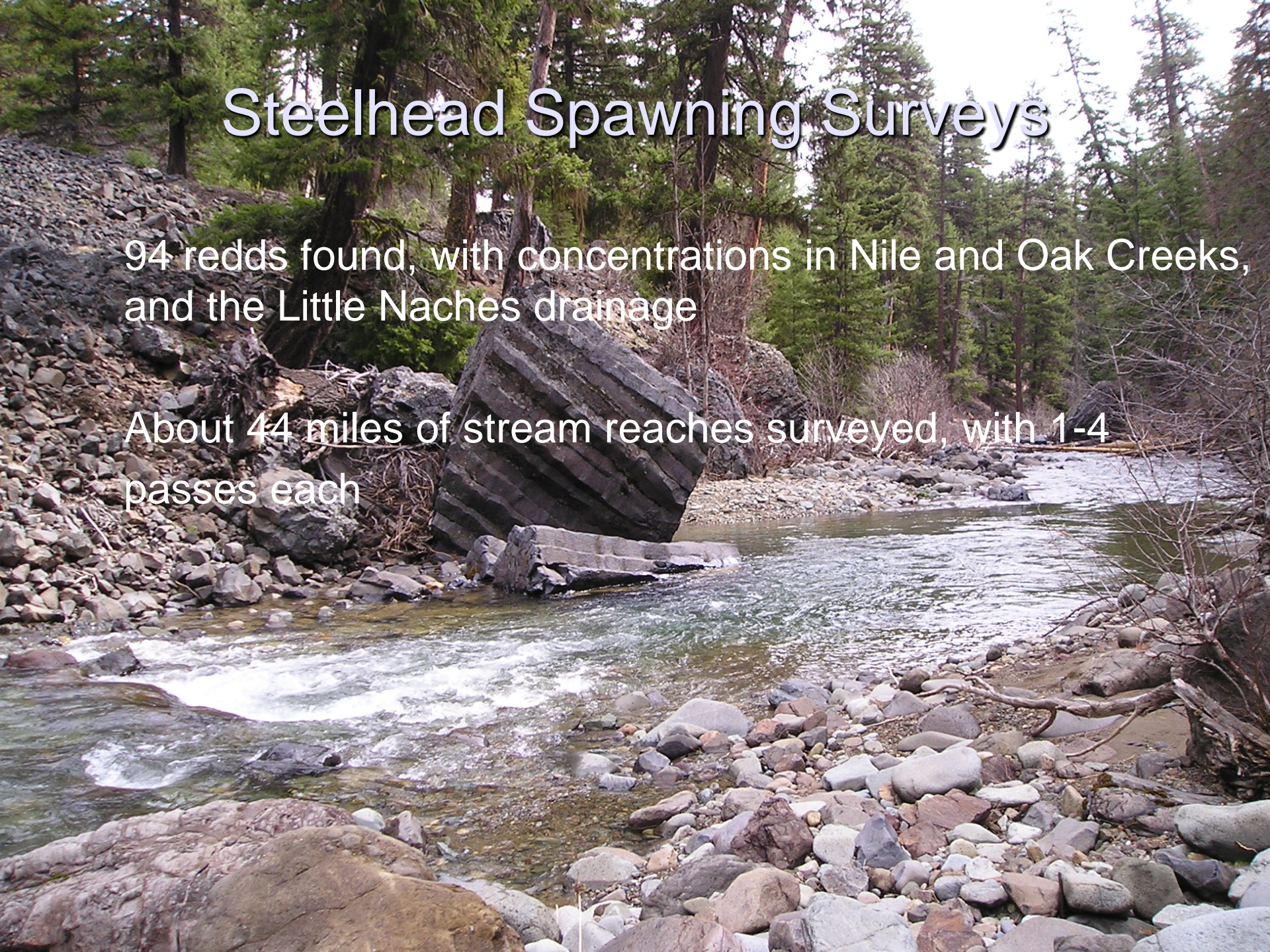
2004 was first year of extensive steelhead redd surveys in the Naches drainage

Inter-agency effort between USFS, WDFW, FWS, and volunteers

# Steelhead Spawning Surveys

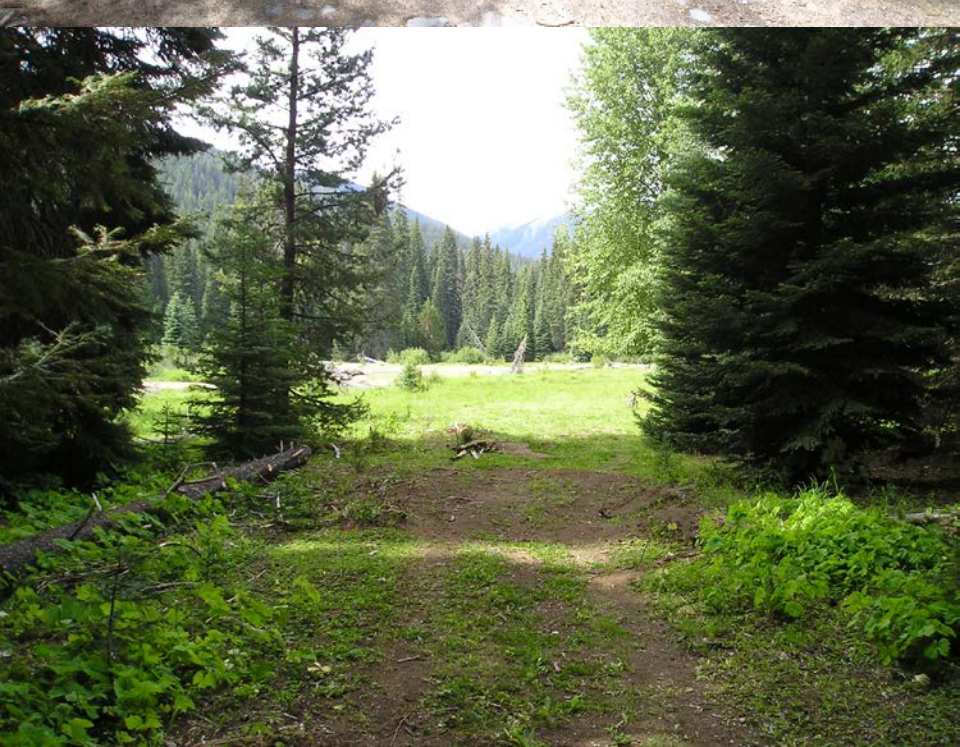
94 redds found, with concentrations in Nile and Oak Creeks,  
and the Little Naches drainage

About 44 miles of stream reaches surveyed, with 1-4  
passes each





# Riparian and Fish Habitat Restoration American River



# South Fork Tieton River



5. 14. 2003



1 Year Later



# Nile Creek



# Monitoring of Restoration Projects and other Forest Management Activities

Instream habitat enhancement projects



# Environmental Education

## Advanced Math and Science Program at Naches H.S.

- Studied water quality
- Sampled aquatic insects to assess water quality
- Sampled fish species composition

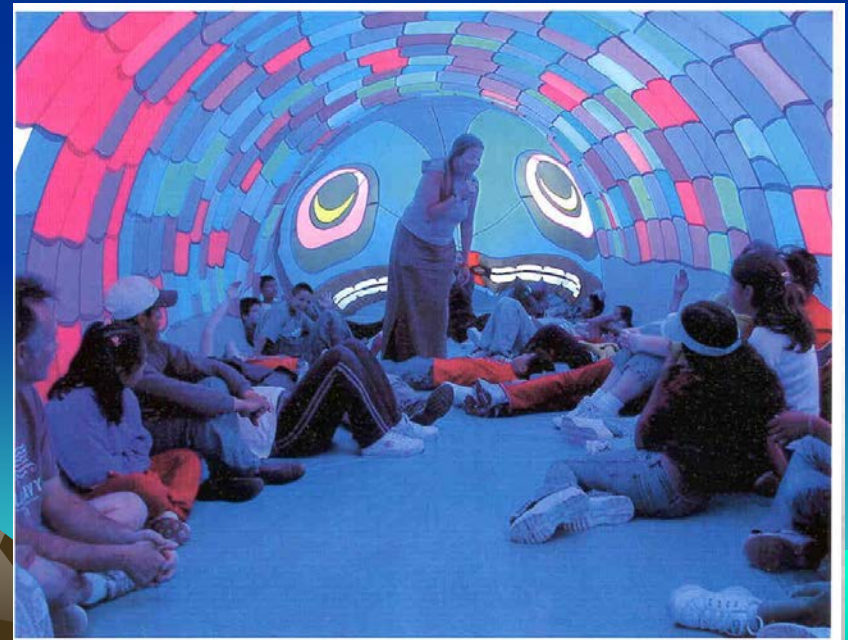
### Stream channel mapping



# Environmental Education

## Salmon Festival at Benton County School District

- Teach students how to respect and protect riparian habitat that salmon need for survival
- Teach about river friendly camping practices to protect water quality
- Teach about salmon life cycles



# Environmental Education

## Respect the River Program

- Program objective is to protect riparian habitat, while still providing opportunities to recreate/camp along river and streams
- Employ forest user education to support restoration projects
- Compliance monitoring of restoration vehicle closure areas





- 
- **Contacted over 1500 forest recreationists about “river friendly camping practices”**
  - **Dismantled or breached over 50 play dams in streams, and published article in Forest newspaper about their impact to fish**
  - **Installed interpretive signs at dispersed campsites**
  - **Removed or moved back 70 campfire hearths from streambanks**
  - **Signed downed and standing dead trees along streams to discourage public from cutting/removing them for campfires**

# Interagency Coordination

- **Salmon nutrient enhancement project**
- **Fine sediment monitoring**



# Salmon Carcass Placement

- Partner with WDFW to place 30-40 cubic yards of excess hatchery salmon into the American, Bumping, and Little Naches River drainages
- Purpose is to mimic the nutrient pulse that occurred historically in these rivers when salmon runs were much larger





# Mess O' Fish



# Fine Sediment Sampling

- Monitor fine sediment levels in spawning gravels in the South Fork Tieton River, within bull trout spawning area
- Partner with Yakama Indian Nation, who processes the samples and writes an annual Report





***THE END***