

# Clear Creek Dam Fish Passage Assessment

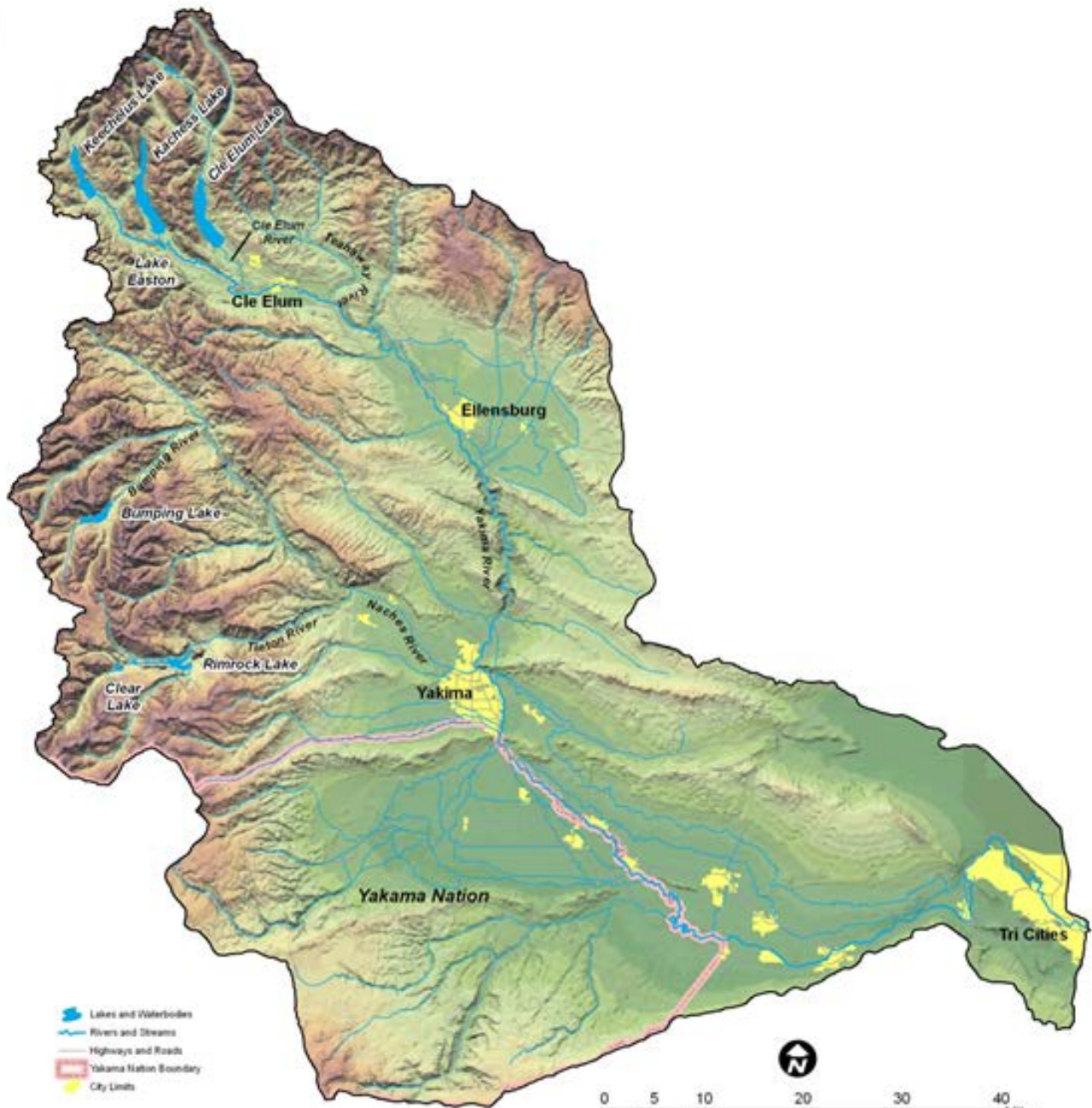
2012-2016

USFWS: Jeff Thomas, Pat Monk

USBR: Arden Thomas

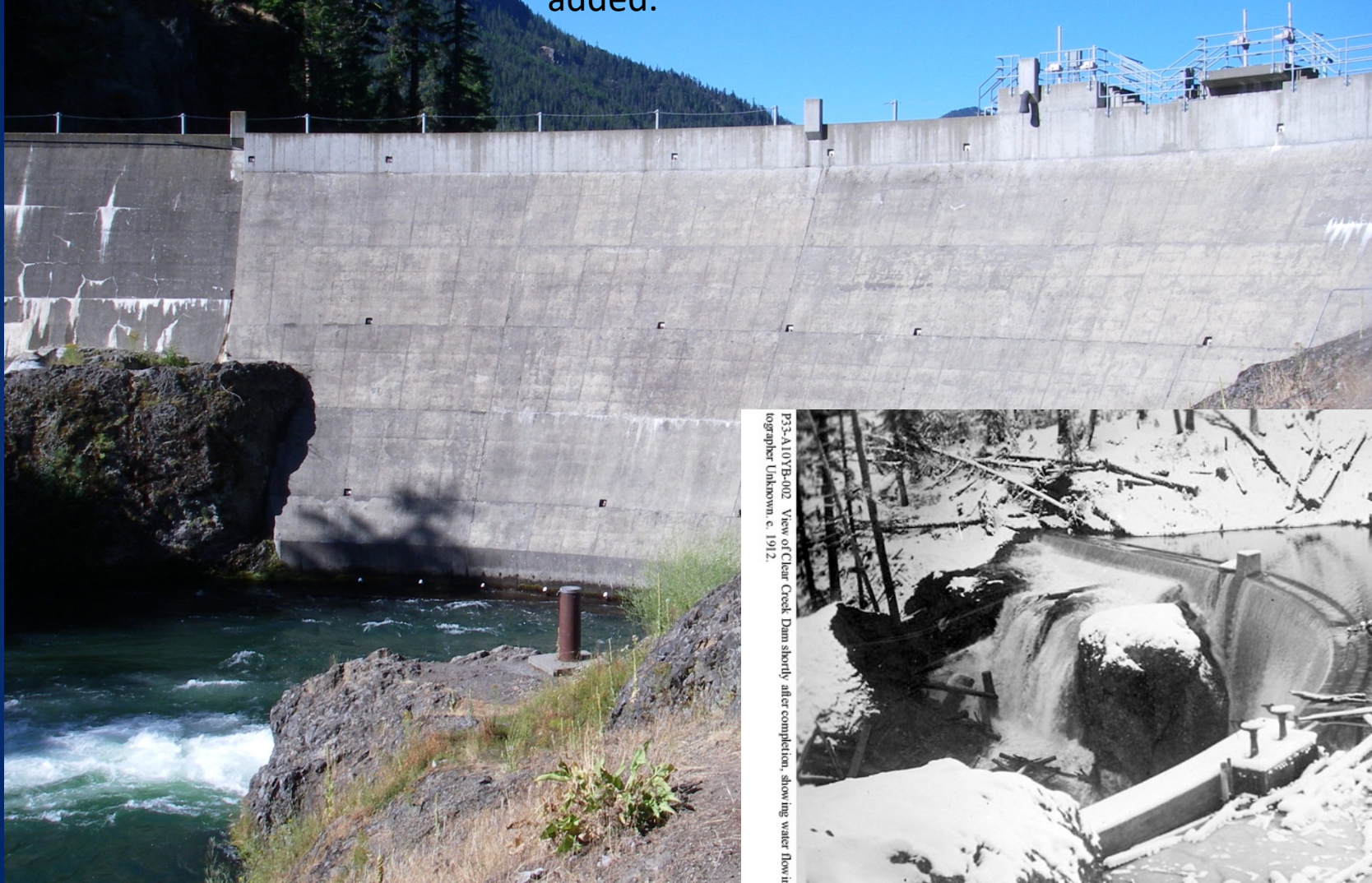
WDFW: Eric Anderson, John Easterbrooks





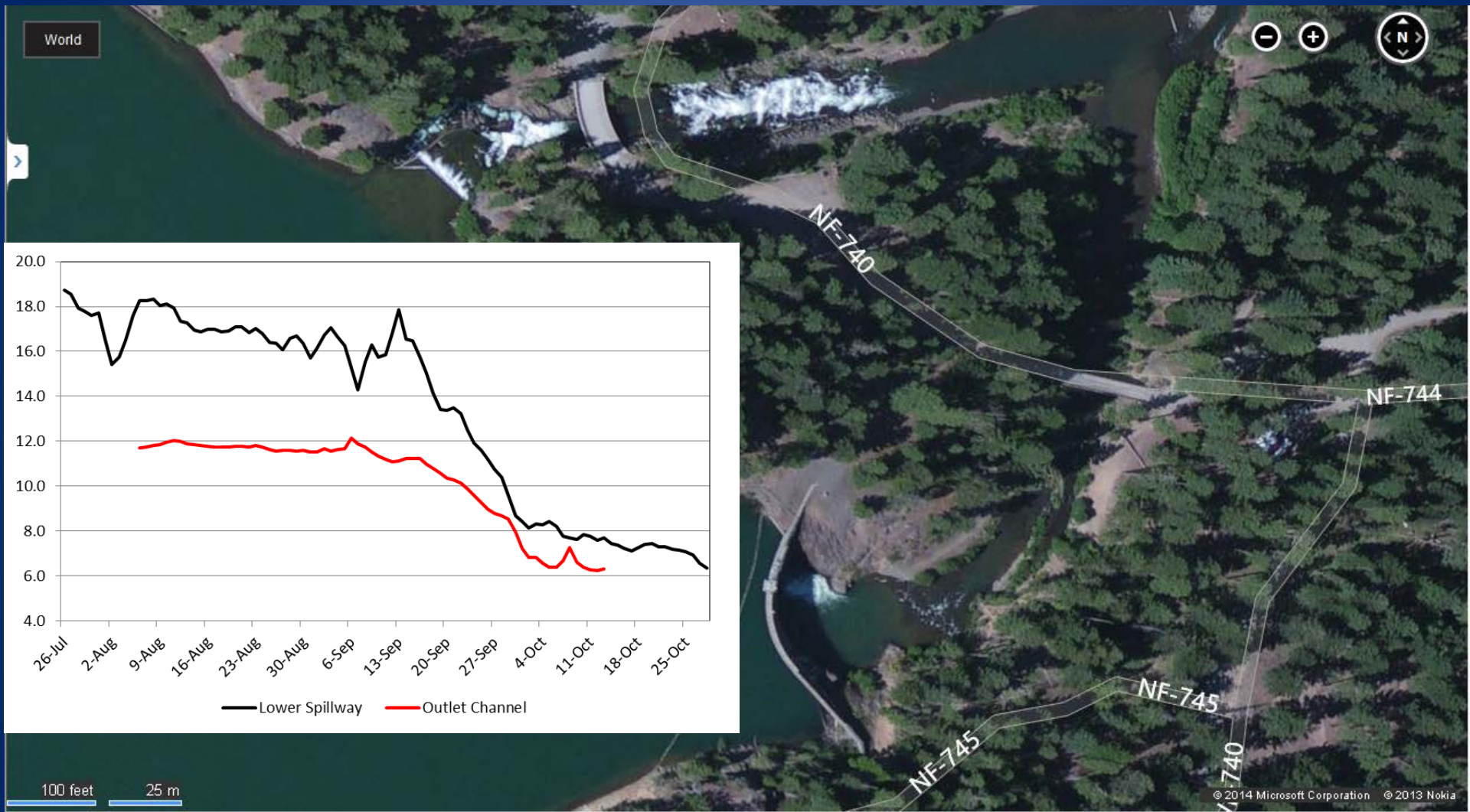
This reference graphic is intended for informational purposes only. It is meant to assist in feature location relative to other landmarks. Geographic features may have been intentionally simplified in an attempt to provide a more readable product. No representation is made as to the accuracy of this document.

Built in 1914; raised to 83 feet high in 1918;  
5,300 acre-feet; repaired in 1994; fish ladders  
added.



P33-A10YB-002 View of Clear Creek Dam shortly after completion, showing water flowing over crest. Photographer Unknown, c. 1912.















# Study Objectives

- Determine if and when bull trout attempt to migrate past Clear Creek Dam
- Assess passage success under various flow conditions
- Determine post-spawn migration timing and extent of Clear Lake use

Ancillary objectives include determining spawning frequency, collecting genetic samples, and estimating the size of the NF Tieton bull trout population

# Study Methods

- Trap post-spawn fish in September in the NF Tieton River using a picket-weir box trap
- Surgically implant 23mm Half-Duplex PIT tags
- Obtain genetic samples and collect other data
- Construct PIT tag detection arrays at key locations
- Collect movement data

End of bull trout spawning survey,  
North Fork Tieton River, September 2012

Year	NF Tieton Redds
2007	37
2008	28
2009	15
2010	18
2011	11
2012	17
*2013	10



September 9, 2013











September 22, 2013

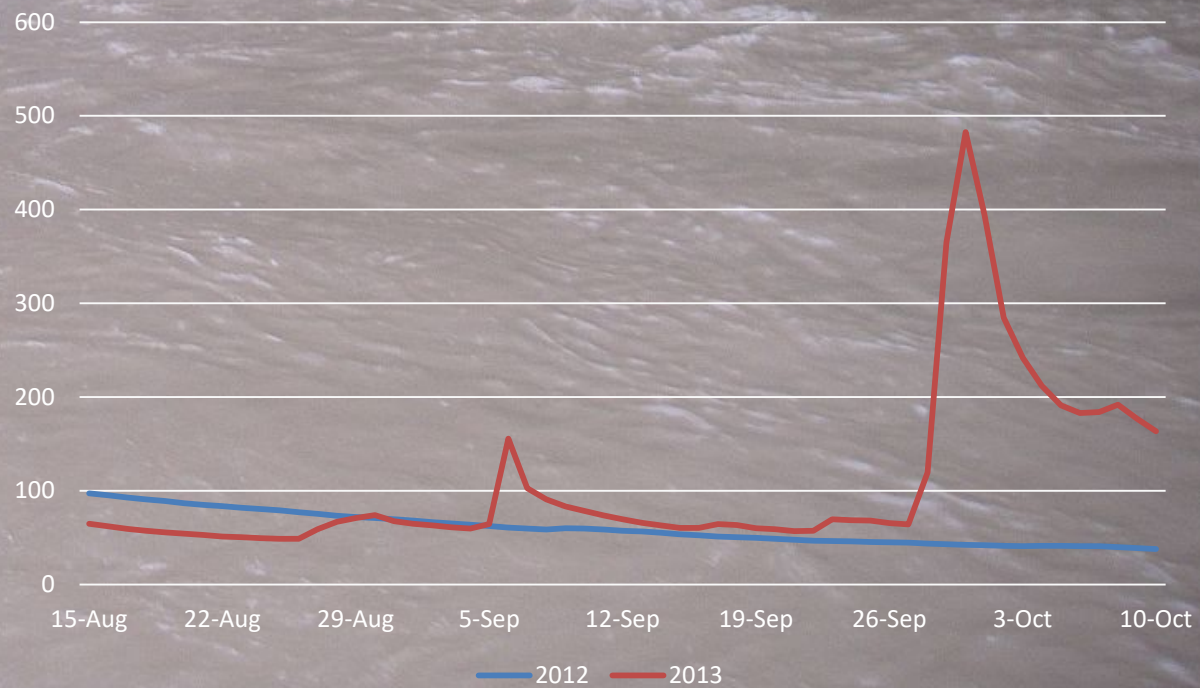


Wasn't always quite so tranquil

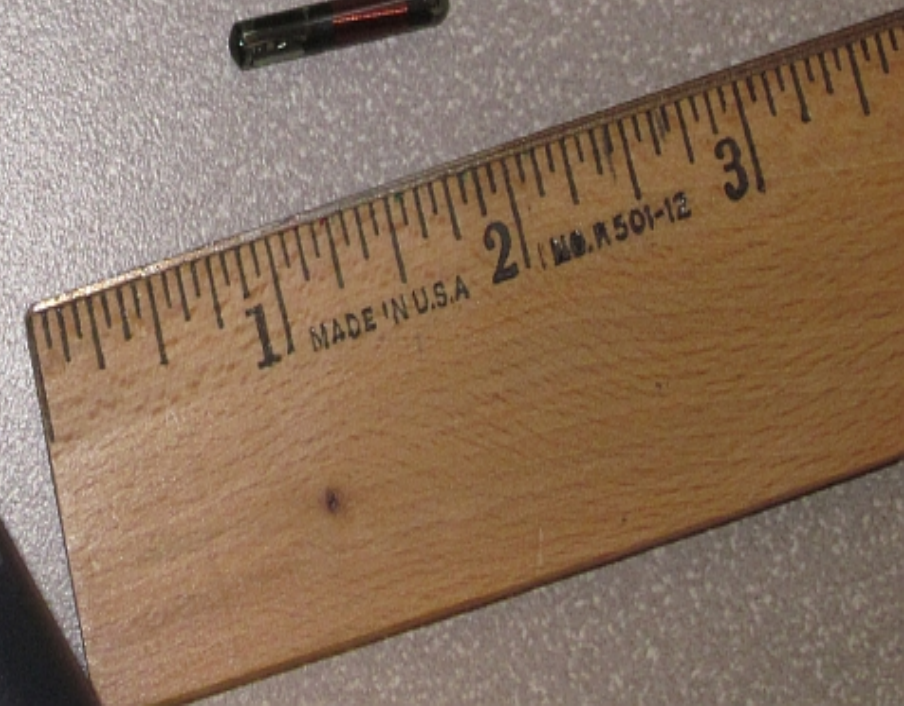


September 29, 2013

AMRW QD in CFS













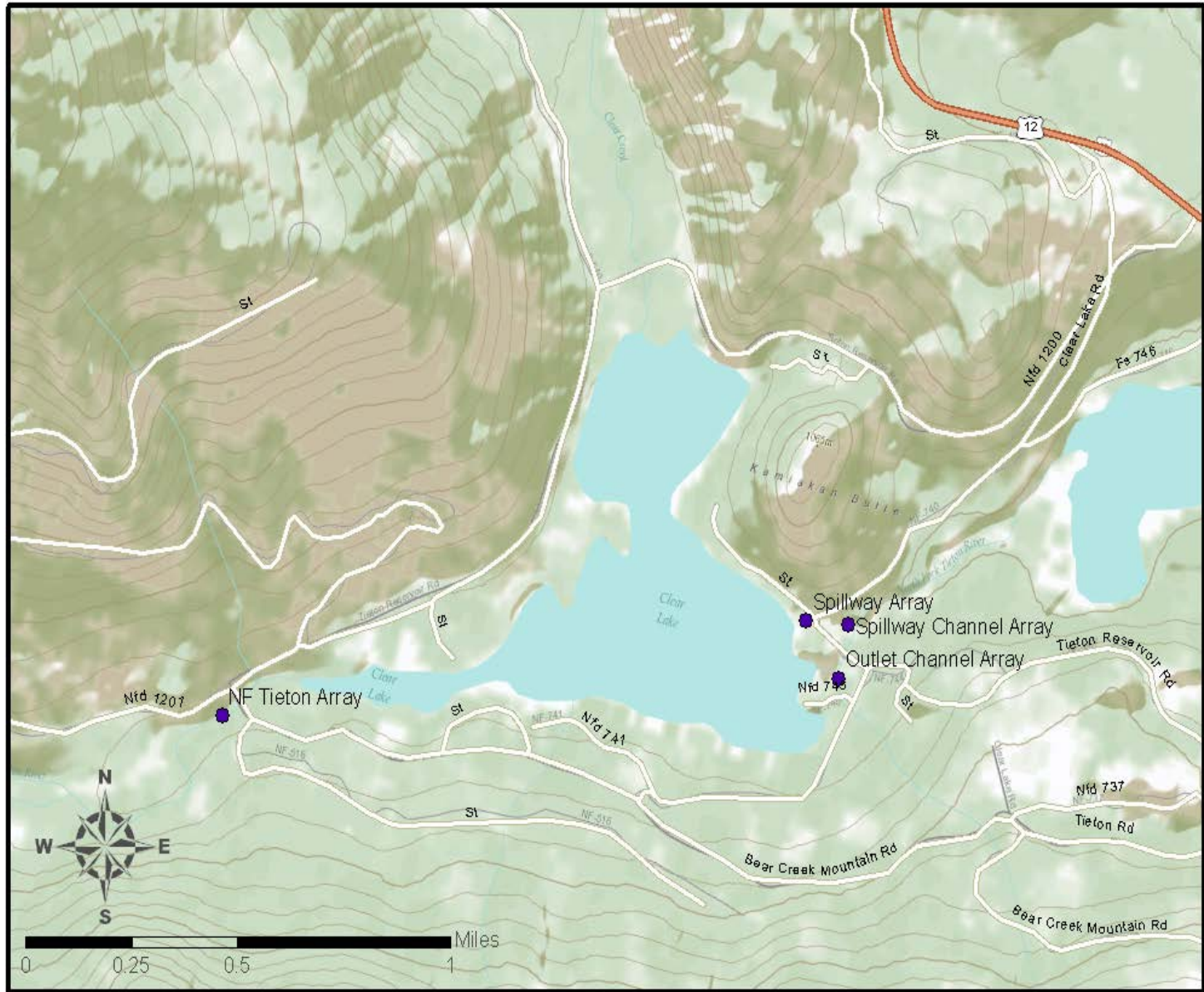








# General Location of PIT Tag Arrays for Clear Creek Dam Fish Passage Evaluation



















# Antenna Problems







# Preliminary Results

- Trap Operated from Sept. 17-Oct 5, 2012 (maybe late)
- 10 bull trout tagged (6 males, 4 females)
- One female tagged in 2012 was detected at the ladder in the fall of 2012. That same fish was also detected in 2013 at lower spillway on July 18, at the upper ladder on July 29, and on NF Tieton on August 29.
- 7 other fish tagged in 2012 were detected at NF Tieton PIT tag site, but not elsewhere.

# Preliminary Results Continued

- Trap operated from Sept. 9-28, 2013
- 16 fish captured (2 recaps), 14 bull trout tagged (5 males, 9 females)
  - All 14 tagged in 2013 were detected at NF Tieton site
- Only two bull trout (one each in 2012 and 2013) have thus far been confirmed emigrating to Rimrock Lake\*
- 22 of the 24 bull trout tagged were detected at least once in 2013, at one or more of the PIT tag detection sites
- With only two recaptures in trap, population abundance estimate is 61 +/- 24
- Is the majority of the population residing in Clear Lake?

\*Complications with two of our antennae preclude a determination of significance for this statistic



# Future Activities



Thanks to Mid-Columbia Fisheries Enhancement Group especially Cassandra Anderson with the Bull Trout Task Force, Bureau of Reclamation Yakima Basin Water Enhancement Project WA Dept Of Ecology and Integrated Plan, Yakima Field Office staff, Slim's Market in Naches for fried chicken, and others.

