

Taneum Creek Coho/NTT Interactions



Gabriel Temple



Science Questions

Natural Production

- Is Taneum Creek a good place for Coho?

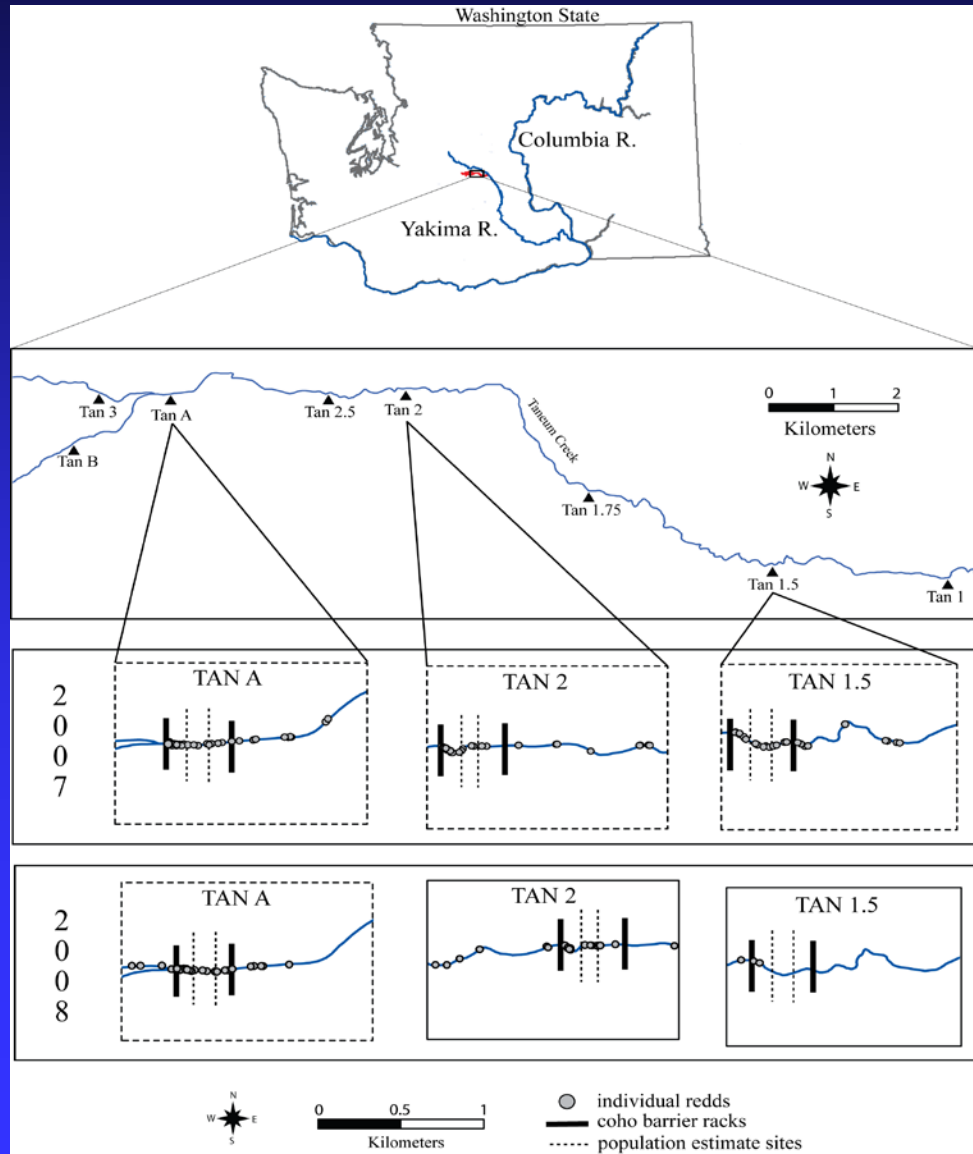
Ecological Interactions

- How will trout respond to naturally produced coho?
- Will increased coho natural production have any negative effects on resident trout (growth or abundance) or will the nutrient benefits from stocking (carcasses) outweigh any potential negatives?

Natural Production

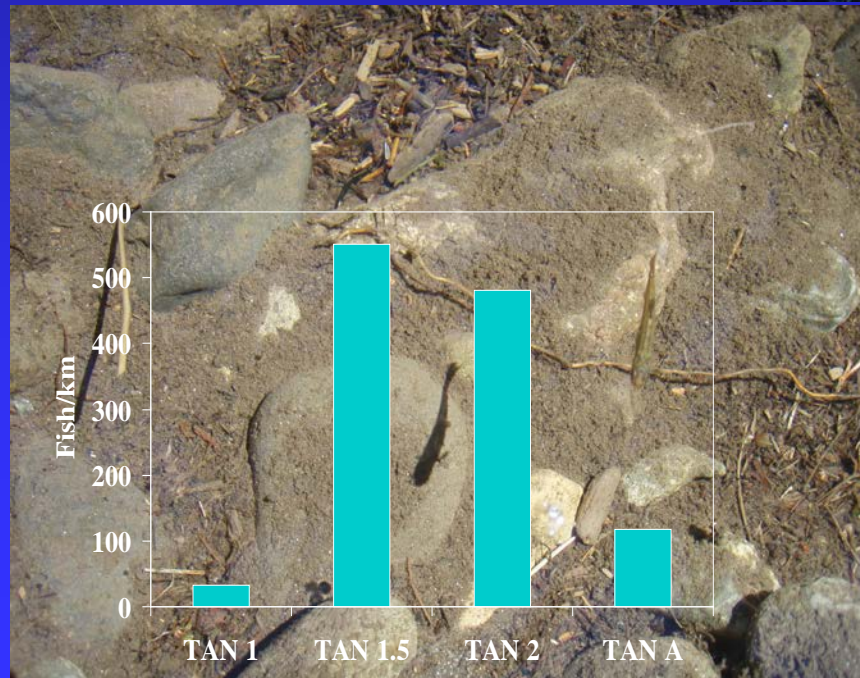


Annual Redd Distribution





Natural Production



June 17, 2008

PIT Tagged Smolts

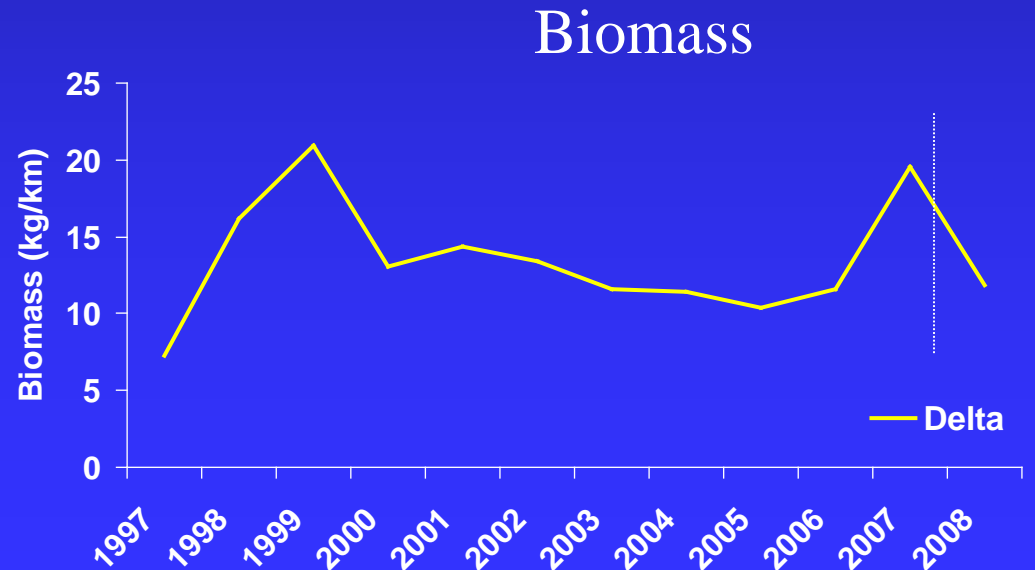
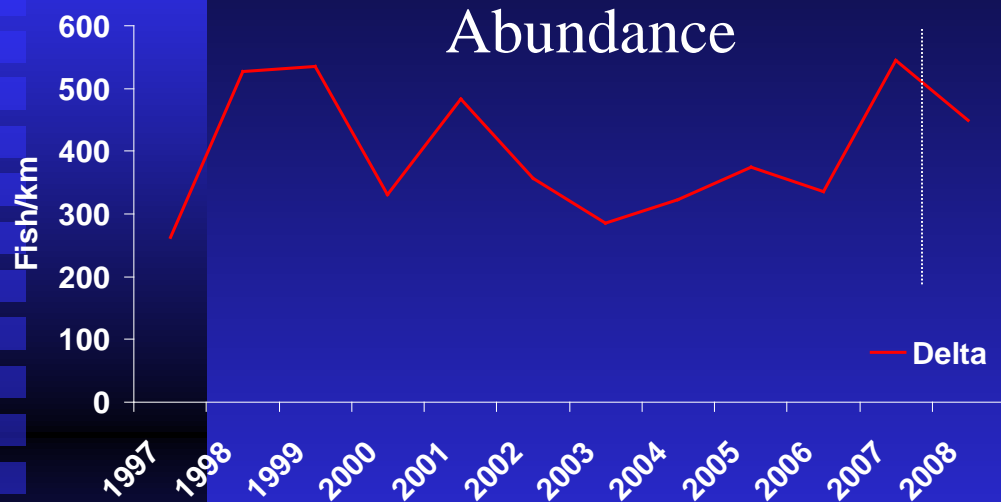
- Fall 2008- PIT tagged 1300 Taneum coho
- Spring 2009- Detected 71 at mainstem dams



Ecological Interactions

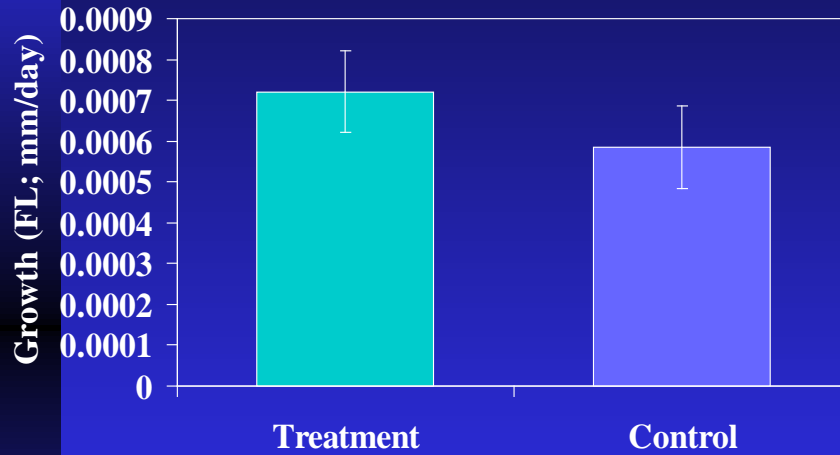
- Track changes in RBT abundance and biomass - BACI
- Monitor growth of PIT tagged RBT in areas with and without coho production
- Track changes in total combined biomass of salmonids - Ecological Efficiency
- Determine utilization of carcass material

Resident Trout Data - BACI

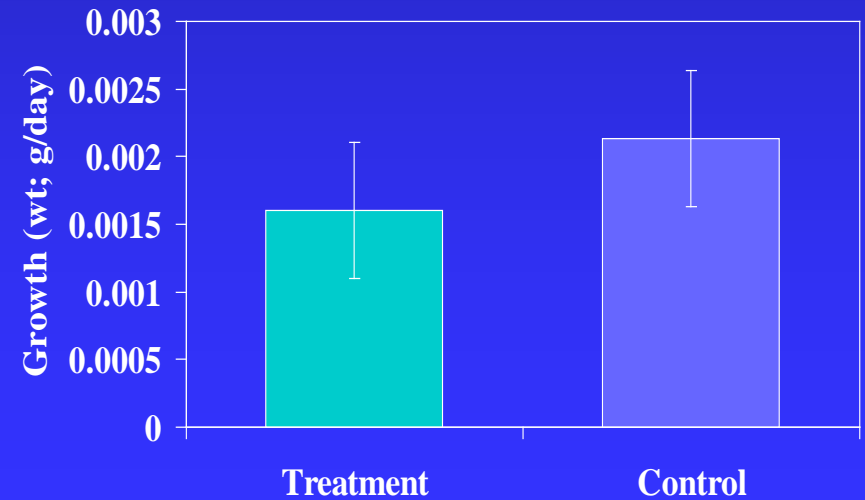


Trout Instantaneous Growth

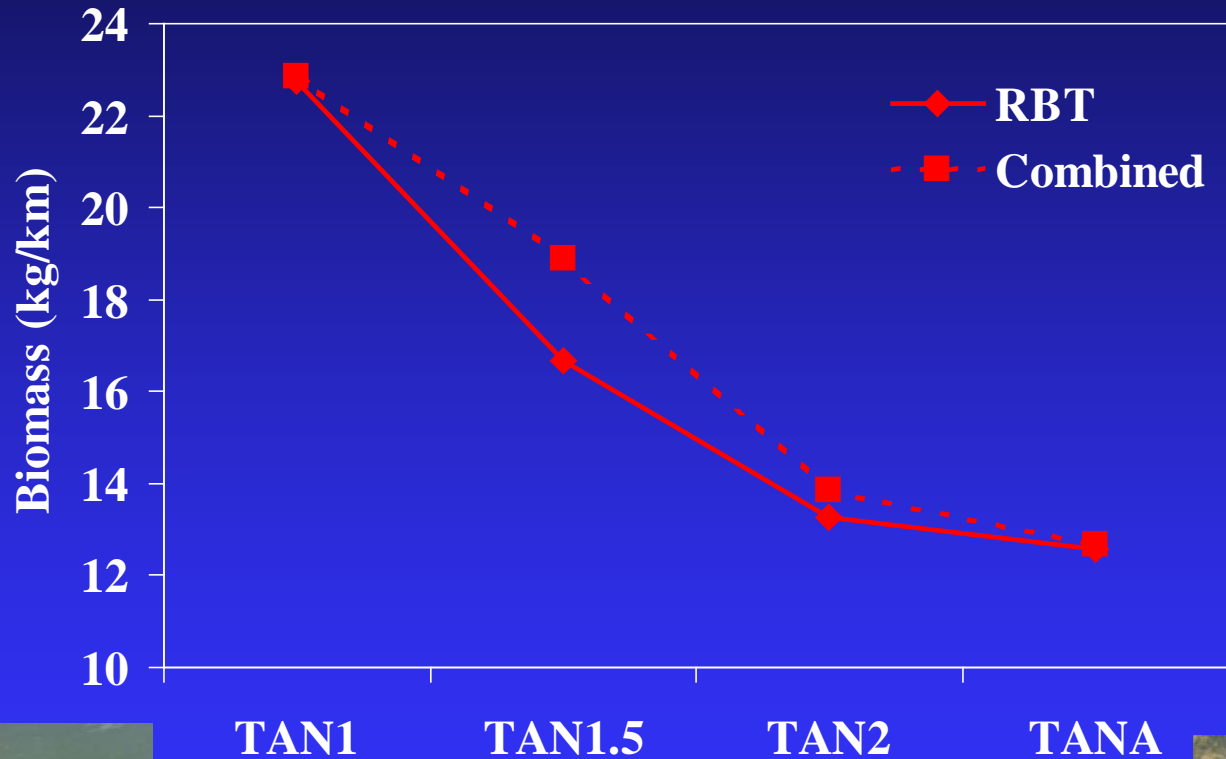
Length



Weight



Salmonid Biomass



Nutrient Benefit of Stocking



Preliminary Results

- No detectable change to NTT abundance, growth or biomass after 1 year of coho natural production
- Increase in combined biomass

