

# Cle Elum Fish Passage Project: Sockeye Reintroduction

Brian Paul Saluskin, Mark Johnston and Dave Fast



**Cooperative Project**

**Bureau of Reclamation, Yakama Nation, Dept. of Ecology, WDFW,  
NOAA Fisheries & Forest Service**



# Interim Down Stream Fish Passage



**PIT Tag Detectors  
300 feet apart**

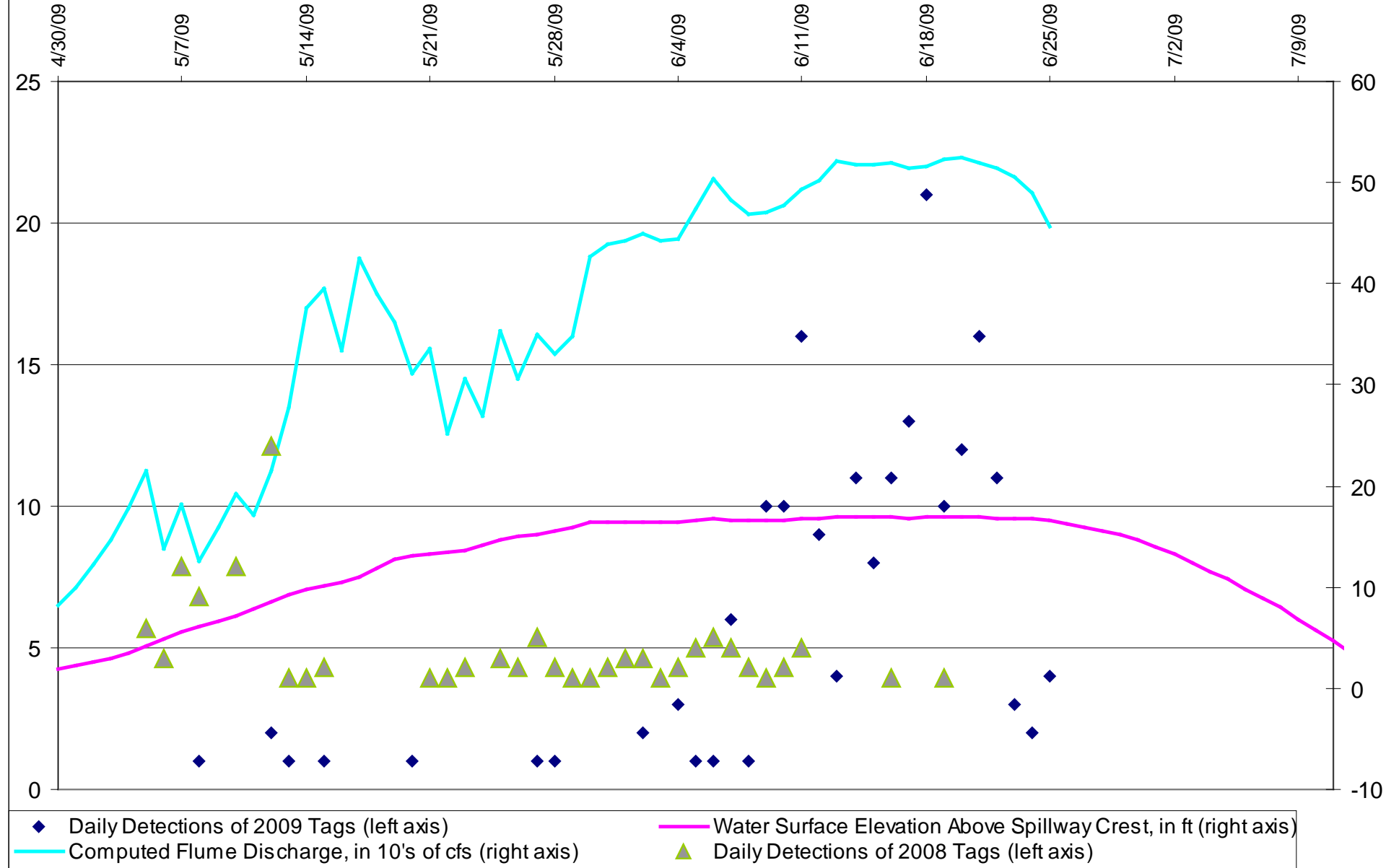




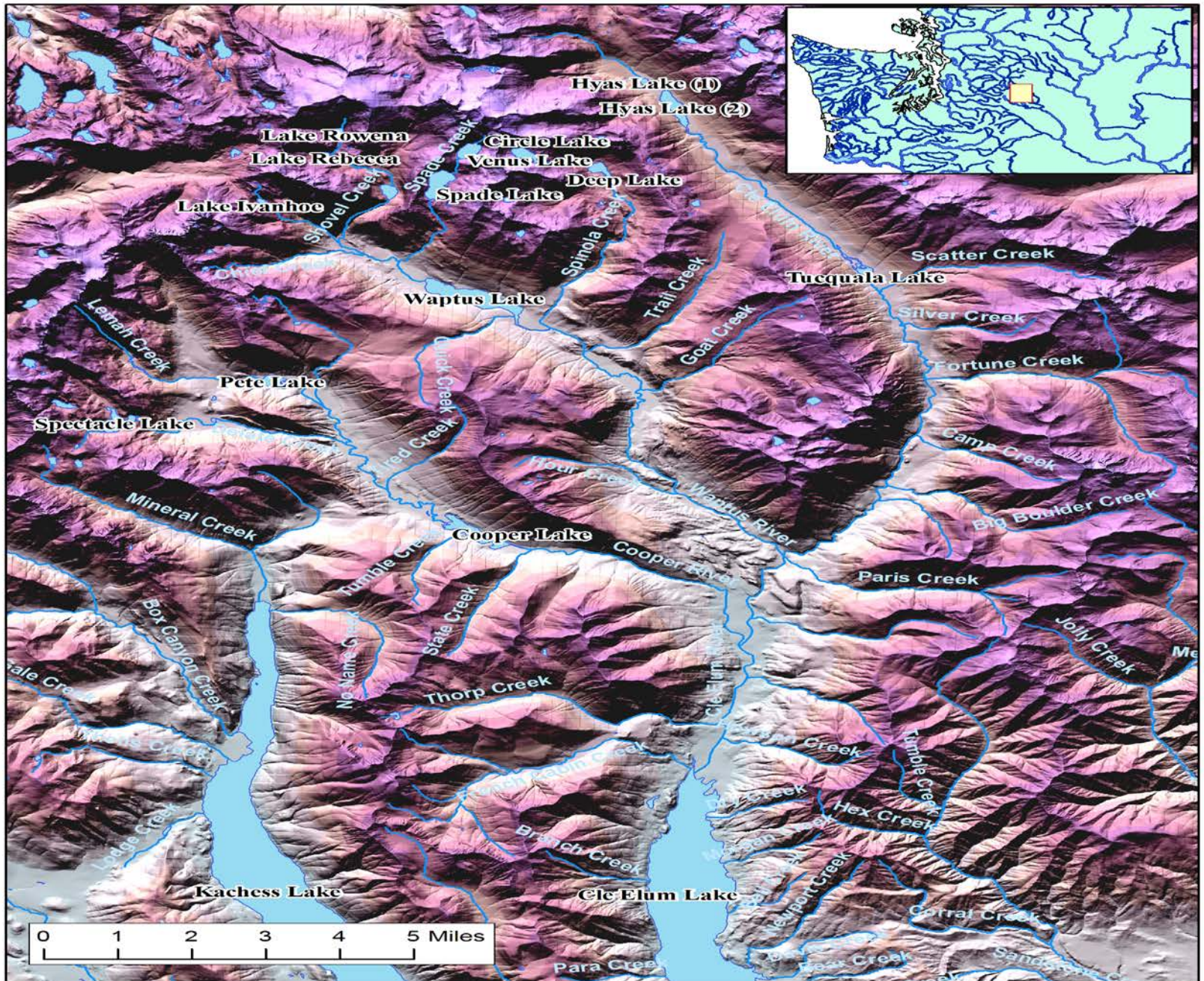
# Pit Tagged Coho 09

- The first detection in the flume was on 05/05/09 at a flume discharge of 220 cfs
- Detections continued until 06/25/09 the last day of flume operation, with the lake level still at 2239 ft (16 ft above spillway crest)
- Only 193 of the 11,934 released were detected in the flume
- The rate fish passage through the flume appeared to be some what correlated with forebay elevation and/or flume discharge

Lake Cle Elum Forebay Elevations, Flume Discharge and PIT Tag Detections, 2009









# **Sockeye Reintroduction**

- **Letter to Grant County Public Utilities District to use Adult trap at Priest Rapids Dam**
- **Received a transport permit from Washington Department Fish & Wildlife**
- **Notified all interested Agencies on our intentions**
- **Contacted local land owner on accessing his property to release sockeye and to hold Sockeye Ceremony**



# **2009 Sockeye Reintroduction**

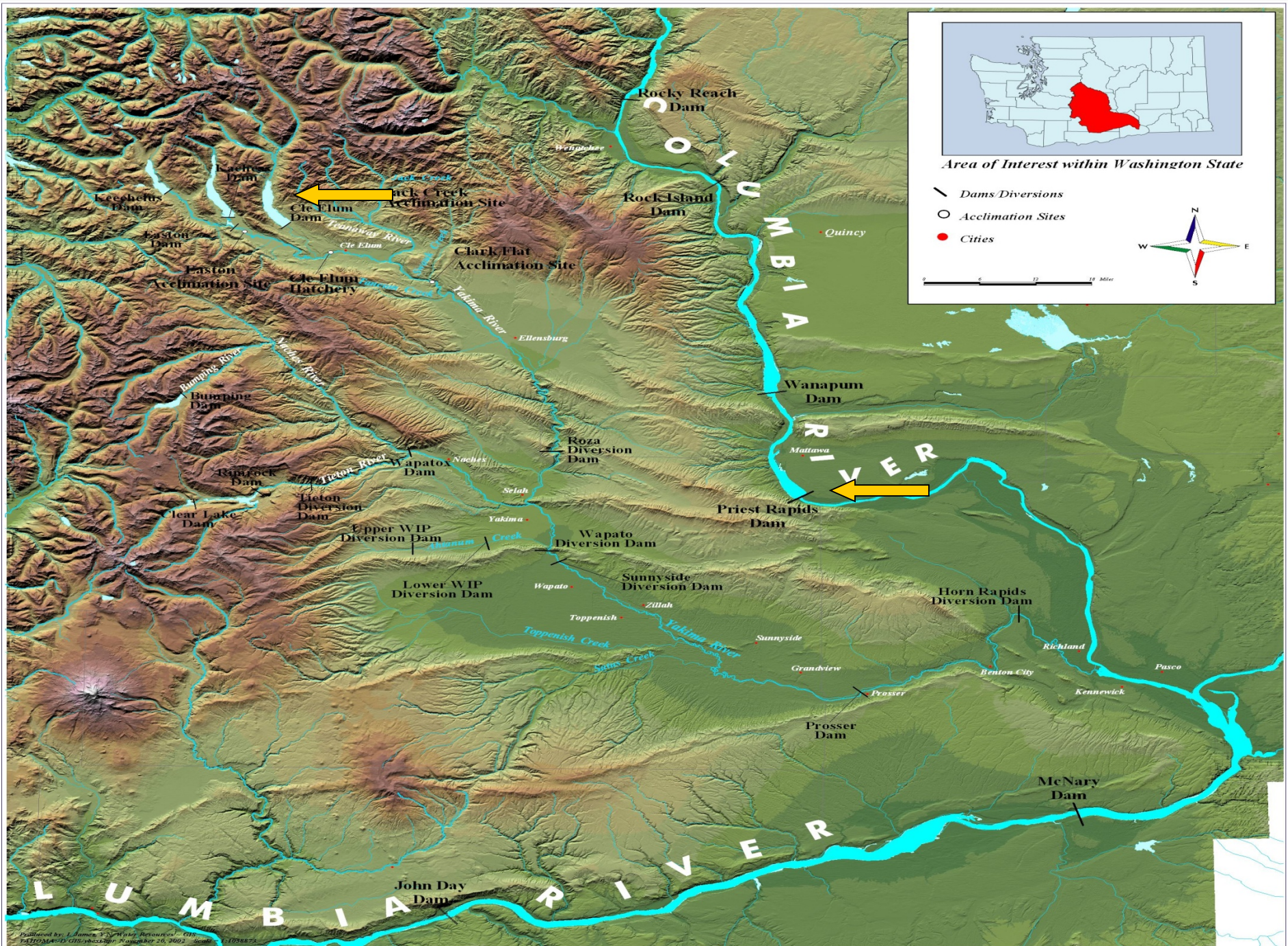
- **After escapement goal of 75,000 was met at Bonneville we collected 1000 returning adults at Priest Rapids Dam**
- **We released adults in reservoir to monitor location and timing of spawning using radio tags, GPS (Notify Forest Service)**
- **Once sockeye migrated from the lake, spawner ground surveys began and radio tracking continued**
- **US Fish & Wildlife Service Biosampling**



# Sockeye Reintroduction

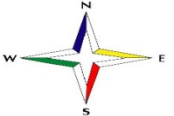






Area of Interest within Washington State

- Dams/Diversions
- Acclimation Sites
- Cities

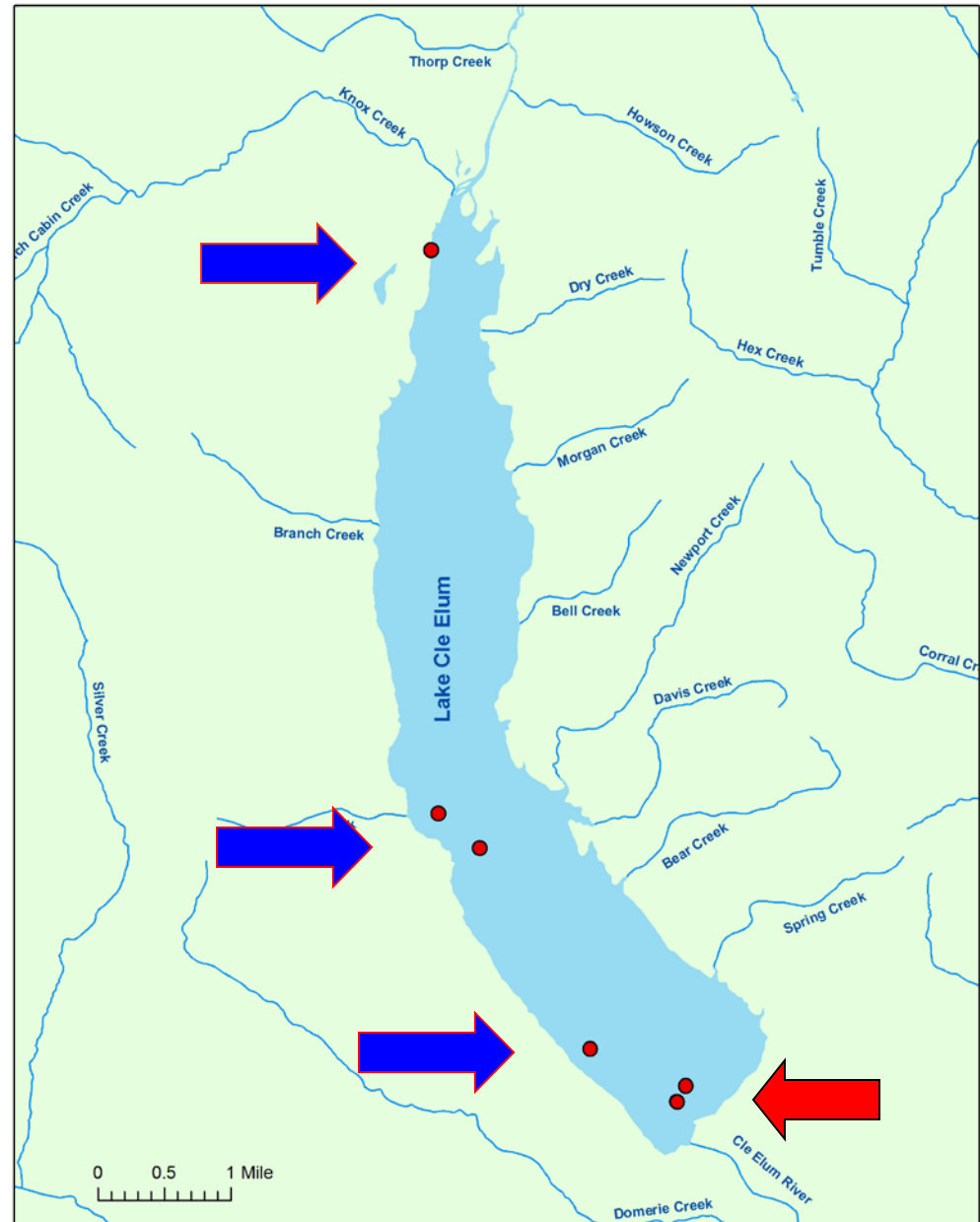


0 6 12 18 Miles



# Sockeye Observation

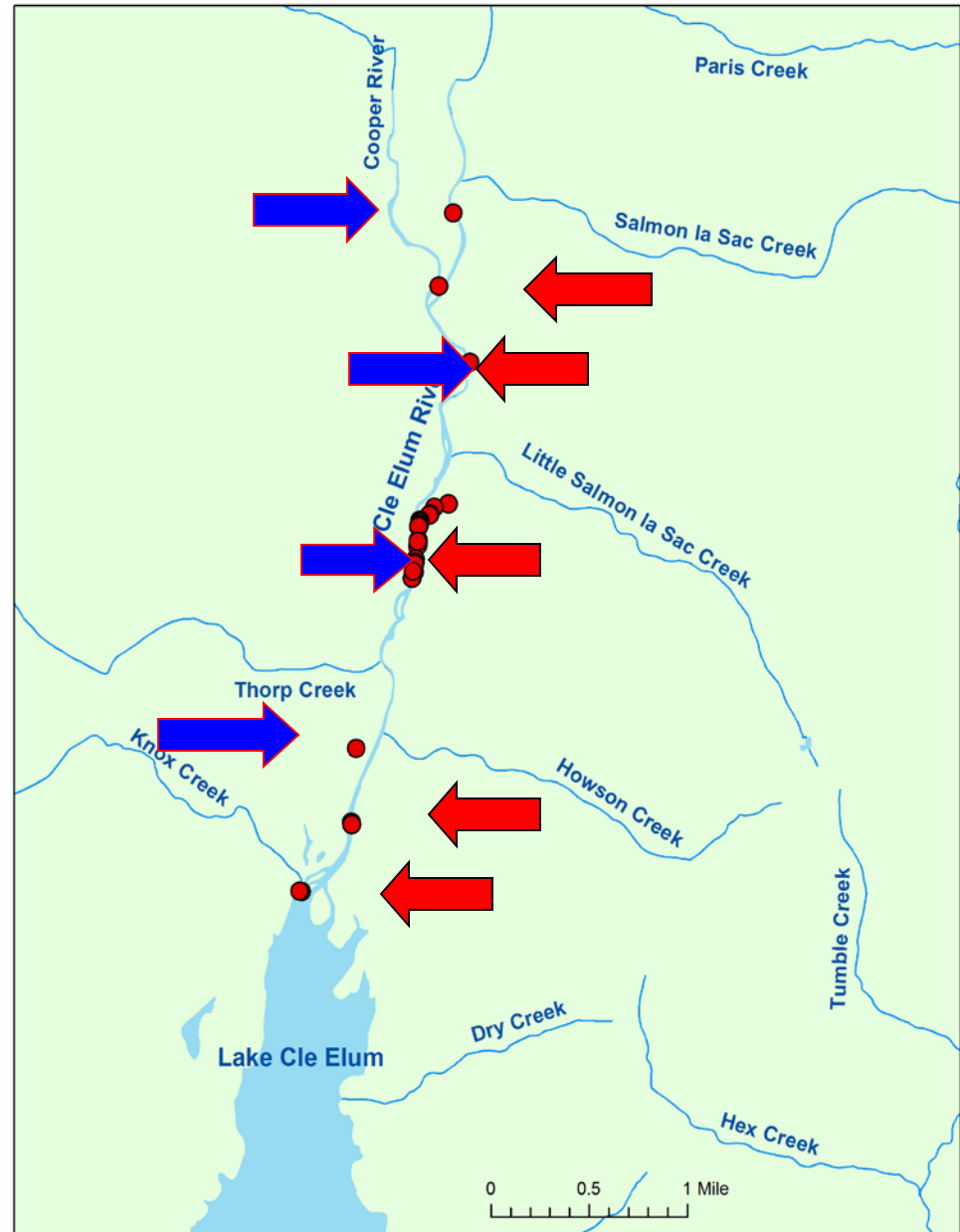
- Sockeye activities first three weeks indicated by the **blue arrow**
- All sockeye moved to the Southern end of the lake for two months indicated by the **red arrow**
- First group started migration on September 19th through October 8th, 2009
- Second group moved on October 21st through December 8th was last activity recorded





# Sockeye Observation

- Wenatchee stock spawns from September to October and Okanagan stocks spawns from October to November
- First group started migration on September 19th through October 8th, 2009 indicated by the **blue arrow**
- Second group moved on October 21st through December 8th was last activity recorded indicated by the **red arrow**
- There was some overlapping where the arrows come together







**Side Channel Near the Lake Late October**



**Copper River Bridge Late September**







# **Sockeye Reintroduction Ceremony**

**achxilpanisha ishchit “making a way”**

## **Schedule of Events**

**10:00am Opening Prayer-Virginia Beavertt**

**10:15am Keynote Speakers**

**Dr Dave Fast & Mark Johnston-Reintroduction Plan**

**YN Tribal Council Fish Committee Chairwoman -Fidelia Andy**

**Phil Rigdon Deputy Director, Yakama Nation DNR**

**Dawn Wiedmeier, Regional Director BOR**

**Jeff Tayer, Regional Director WDFW**

**Terry Brewer, President, GCPUD Board of Commissioners**

**Judy Hallisey, District Ranger Forest Service**

**Shawn Parker, Landowner-Cascade Playtime Rentals**

**11:00am Welcome Dance**

**Virginia Beavertt, Vivian Peters DeLArosa, Patsy Whitefoot**

**Palatisha Miyanashma Dance Group Toppenish School Dist.**

**11:30am Prayer for the Sockeye-Jerry Lewis**

**11:45am Fish Release-Chuck Carl, Arnold Barney, Steve Blodgett**

**12:00pm Dinner-Roger Jacob and Greg Sutterlict, Traditional Dinner Prayer**



# Sockeye Reintroduction Ceremony





# Working with the ONA

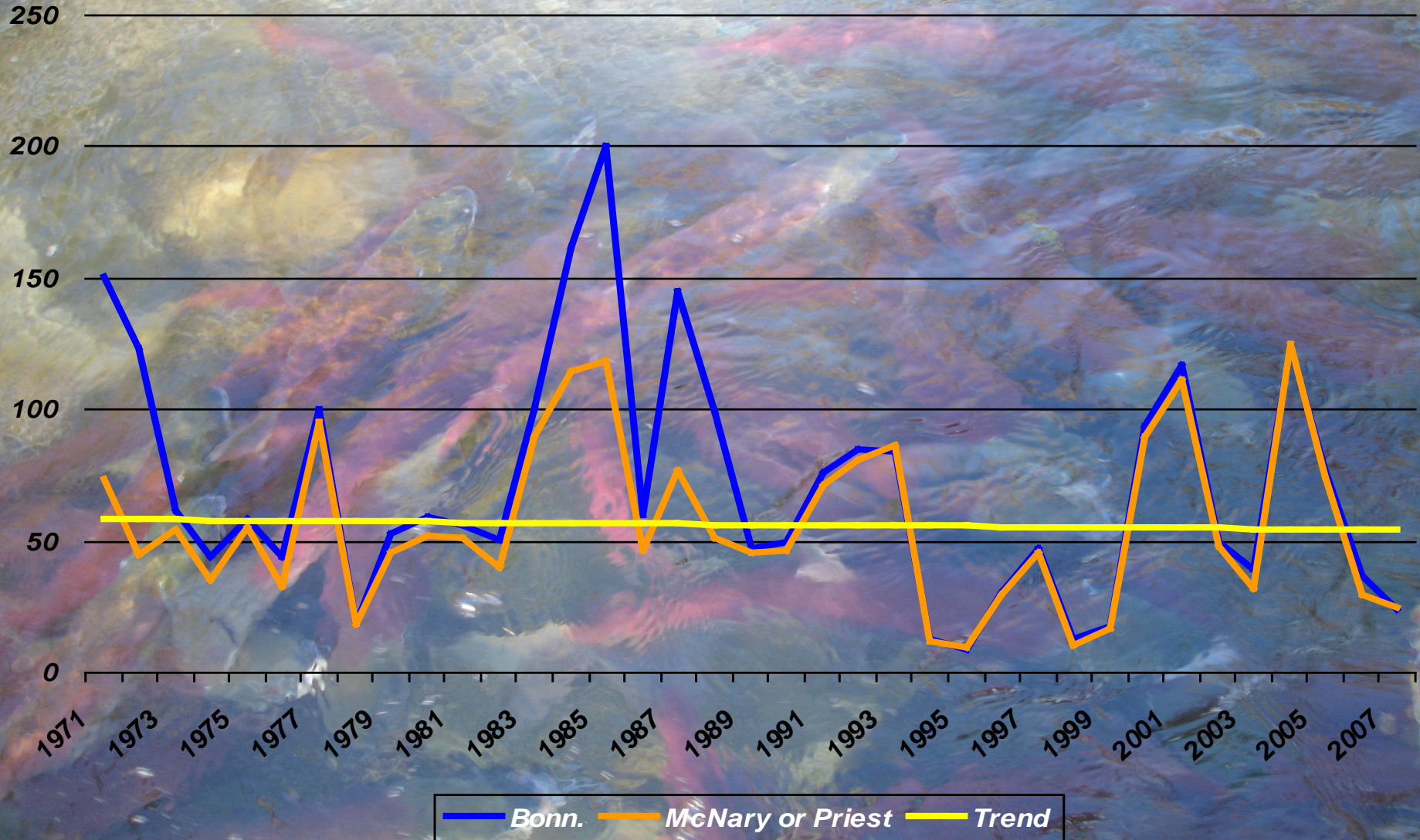
- Continue to help with their broodstock collection
- Bilateral Okanagan Basin Technical Working Group (BOBTWG)
- Sockeye Ceremony Fry Release
- Use what works





# Columbia Basin Sockeye Counts, 1970-2007

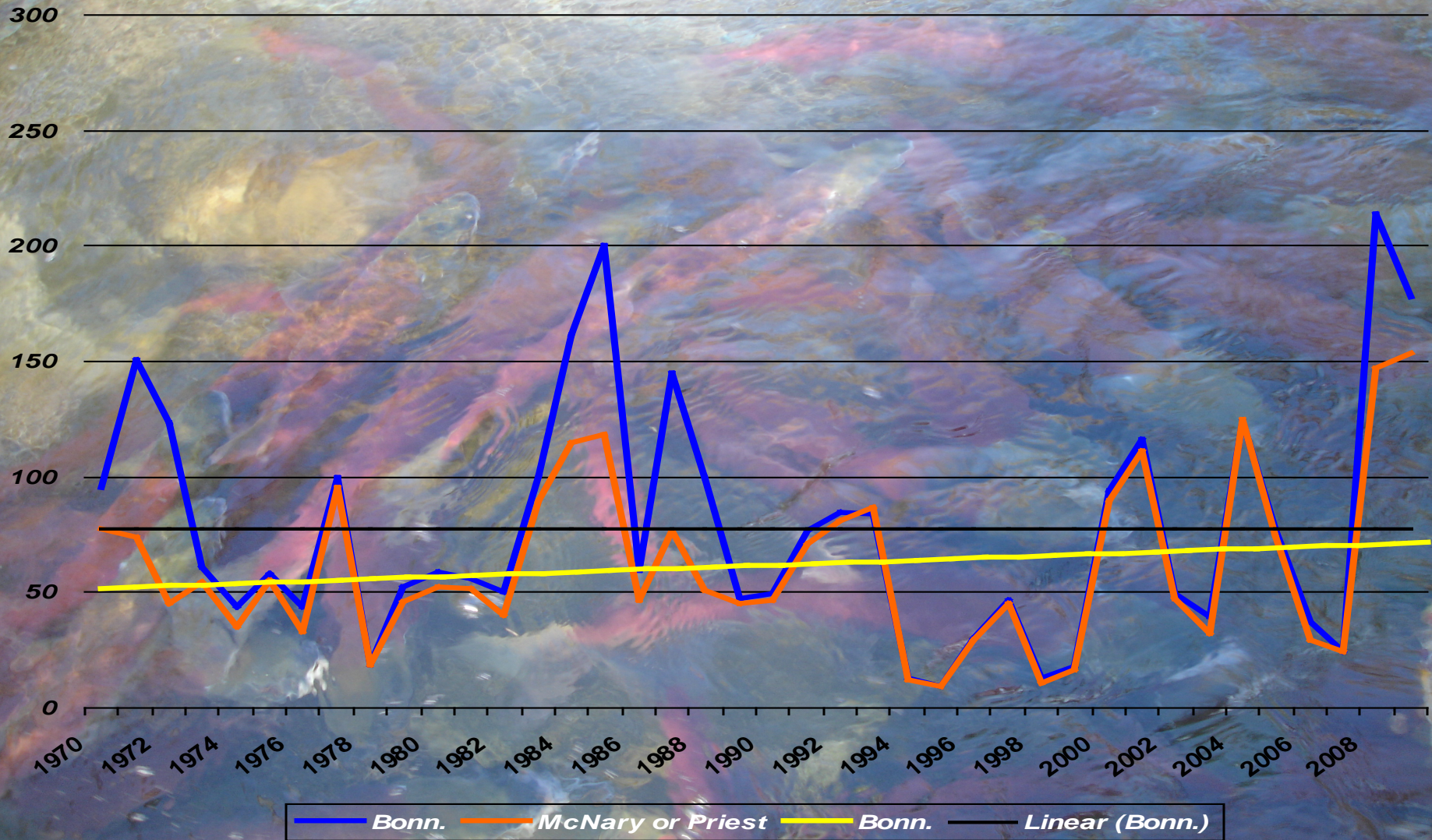
Thousands of Fish





# Columbia Basin Sockeye Counts, 1970-2009

Thousands of Fish





# The Meeting with ONA

- YN Traveled to Canada
- 5 of the 7 Chiefs
- Elders of the Bands
- Agreed to form a Memorandum of Understanding (MOU)
- Meeting was a success





# **Invitation To All**

**What: Cle Elum Lake Sockeye  
Reintroduction Ceremony**

**When: Date TBA**

**Where: Northeast Side of Cle Elum Lake**

- Spiritual Leader**
- Keynote Speakers/Tribal Council**
- Welcome Dance**
- Free T-Shirt**
- Ceremonial Dinner**



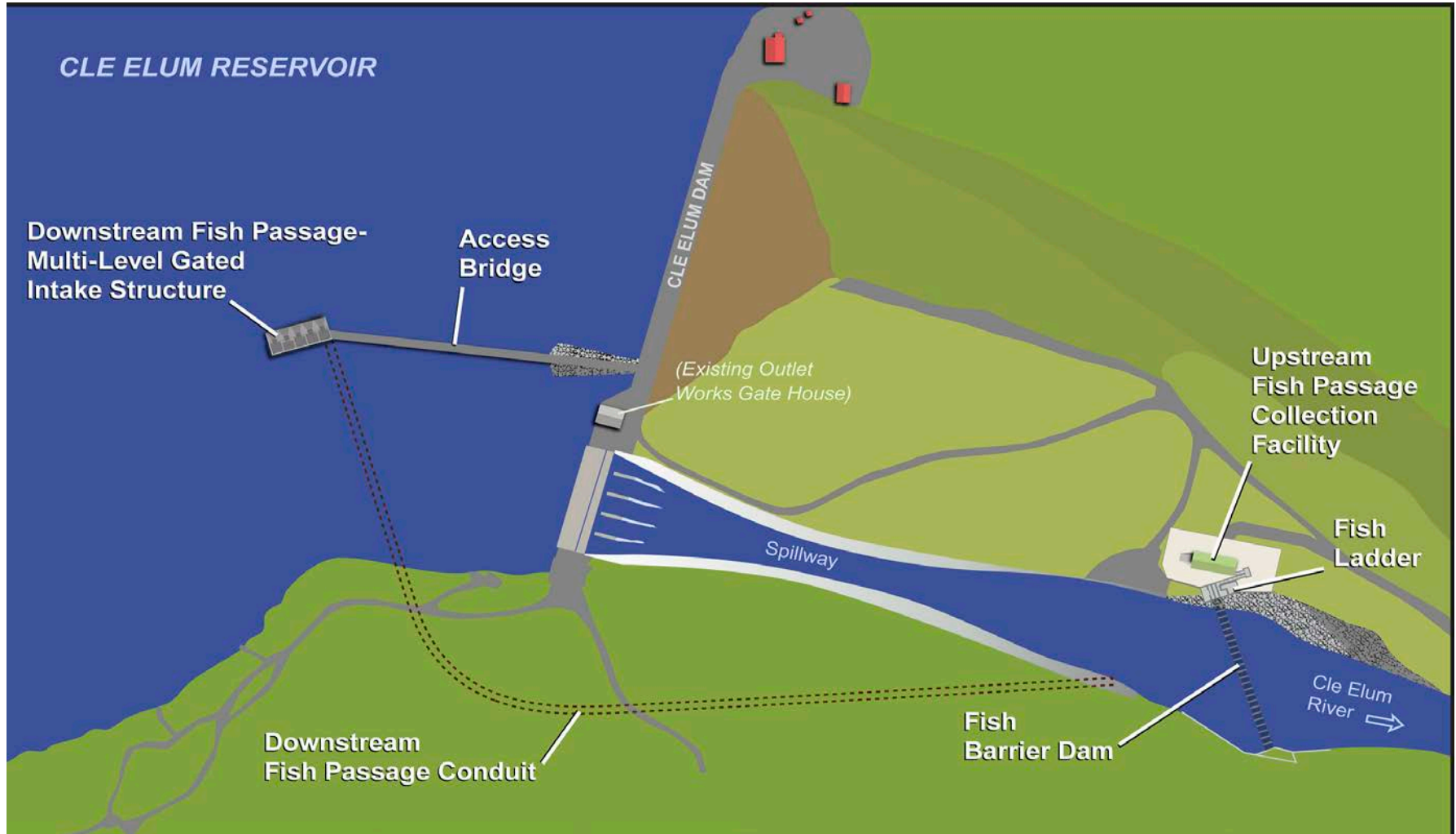
# Moving Forward

- **Continue with Adult Reintroduction**
- **2<sup>nd</sup> Annual Sockeye Ceremony**
- **NEPA Process**
- **Value Engineering (VE) Study Complete**
- **Baseline Data Collection**
- **Maintain and Gain Momentum**

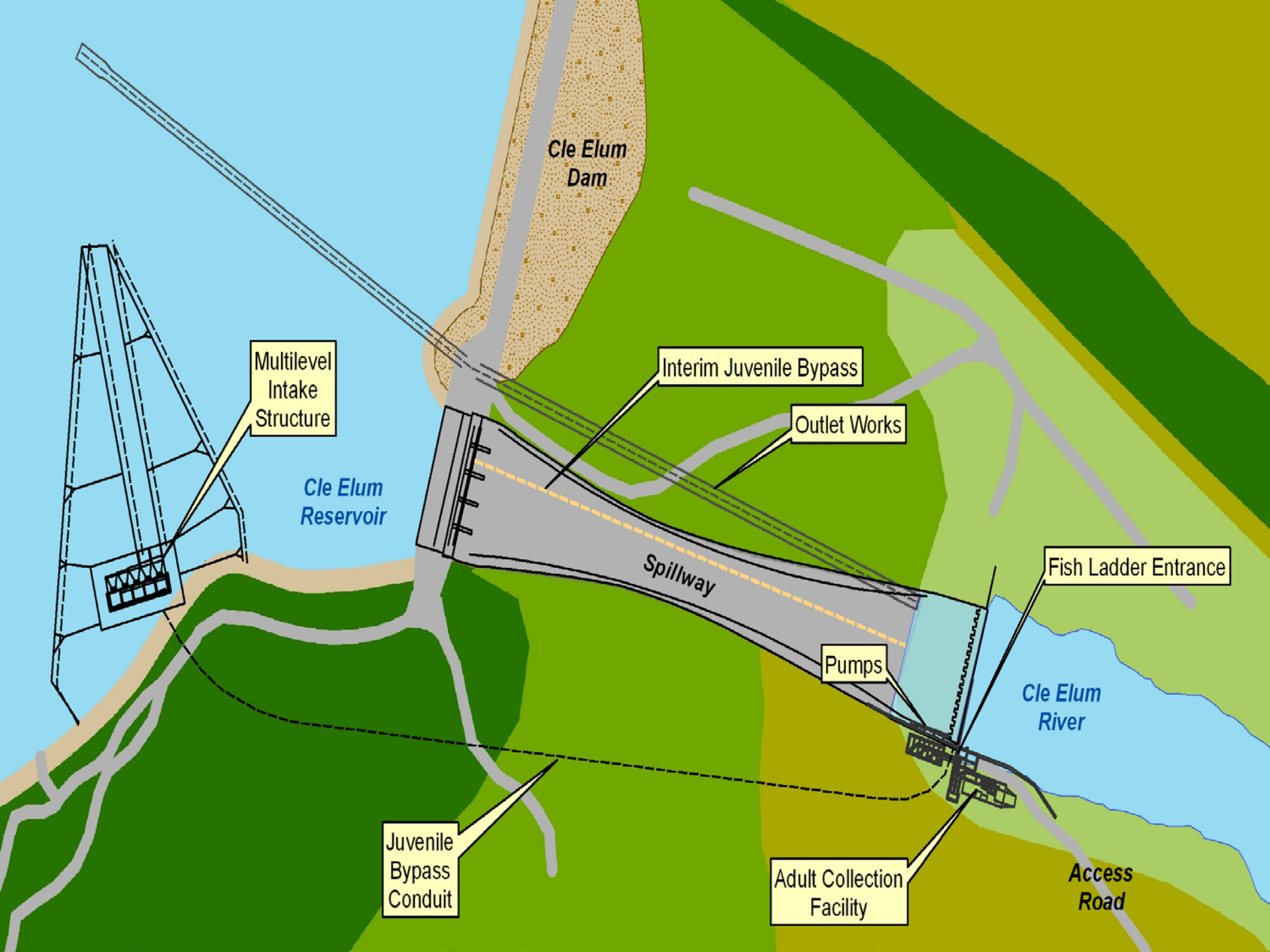


# Cle Elum Fish Passage

- Downstream juvenile passage
  - Multi-level intake structure; conduit to below dam
- Upstream adult passage
  - Collection and transport facility







Cle Elum Dam

Multilevel Intake Structure

Cle Elum Reservoir

Interim Juvenile Bypass

Outlet Works

Spillway

Pumps

Fish Ladder Entrance

Cle Elum River

Juvenile Bypass Conduit

Adult Collection Facility

Access Road



# Acknowledgements

- **Dr. Dave Fast**
- **Mark Johnston**
- **Dave Lind**
- **Yakama Nation Fish & Wildlife Committee**
- **Paul Huffman**
- **John Easterbrooks (WDFW)**
- **Howie Wright (ONA)**
- **Pat Monk US Fish & Wildlife Service**
- **Yakama Nation Tech's**



# Access Reports and Documents

- Yakima Dams Fish Passage Study web page located at:  
[http://www.usbr.gov/pn/programs/ucao\\_misc/fishpassage/index.html](http://www.usbr.gov/pn/programs/ucao_misc/fishpassage/index.html)
- My email: [passagebio@qwestoffice.net](mailto:passagebio@qwestoffice.net)