

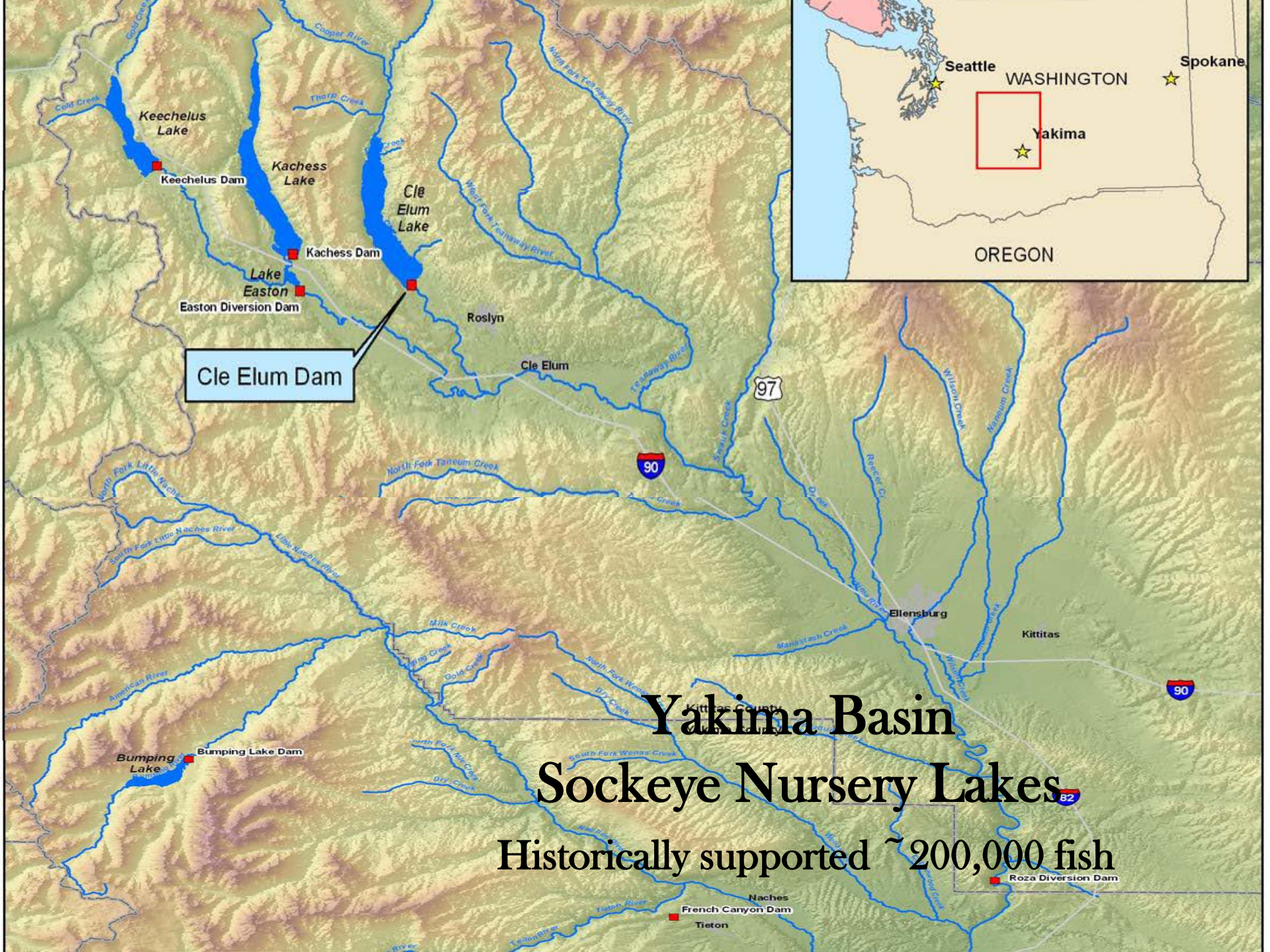
CLE ELUM FISH PASSAGE PROJECT: Update

BRIAN SALUSKIN, MARK JOHNSTON, DAVE FAST



Cooperative Project:



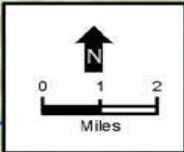
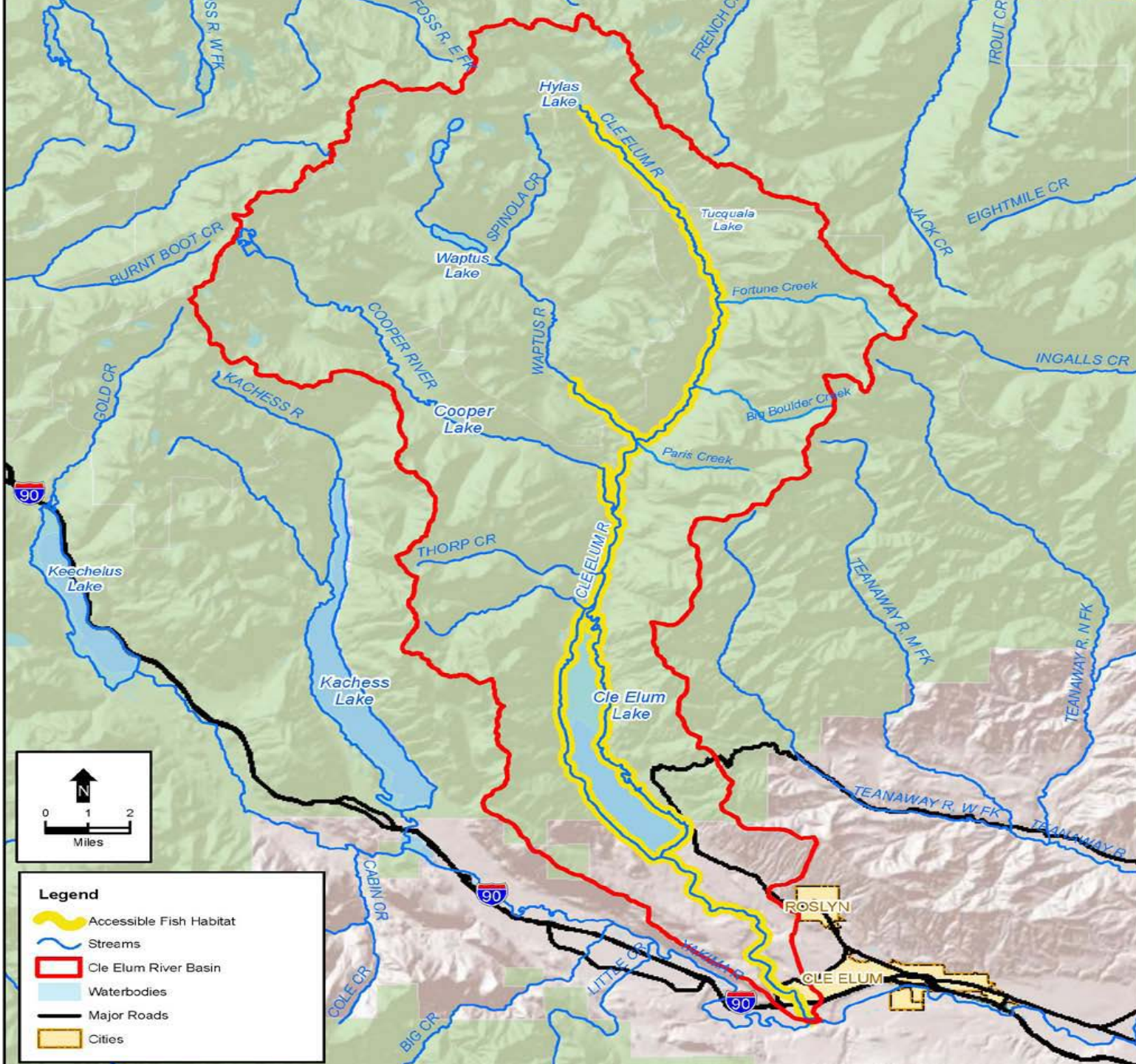


Cle Elum Dam

Yakima Basin Sockeye Nursery Lakes

Historically supported ~ 200,000 fish

Roza Diversion Dam



Legend

- Accessible Fish Habitat
- Streams
- Cle Elum River Basin
- Waterbodies
- Major Roads
- Cities




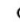

P23-43716-2078 View of Lake Ok-Elum from east. Resubmission photo by S.J. Newell. 07/22/1911

SOCKEYE REINTRODUCTION

- Two donor stocks Lake Wenatchee and Lake Osoyoos
- Letter to Grant County Public Utilities District to use Adult trap at Priest Rapids Dam
- Received a transport permit from Washington Department Fish & Wildlife
- Notified all interested Agencies on our intentions
- Contacted local land owner on accessing his property to release sockeye

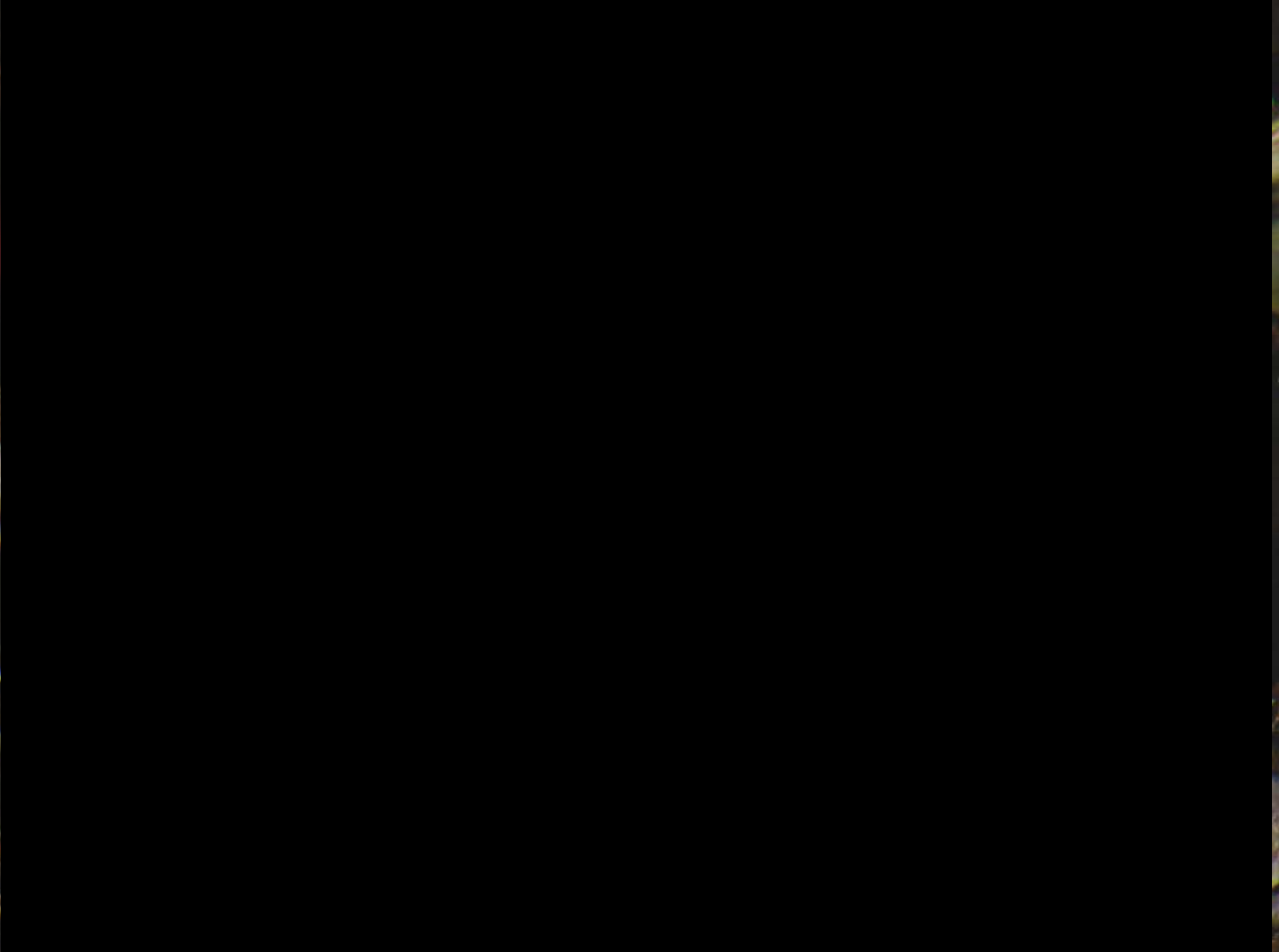


Area of Interest within Washington State

-  Dams/Diversions
-  Acclimation Sites
-  Cities



OFF-LADDER ADULT FISH TRAP



SOCKEYE REINTRODUCTION

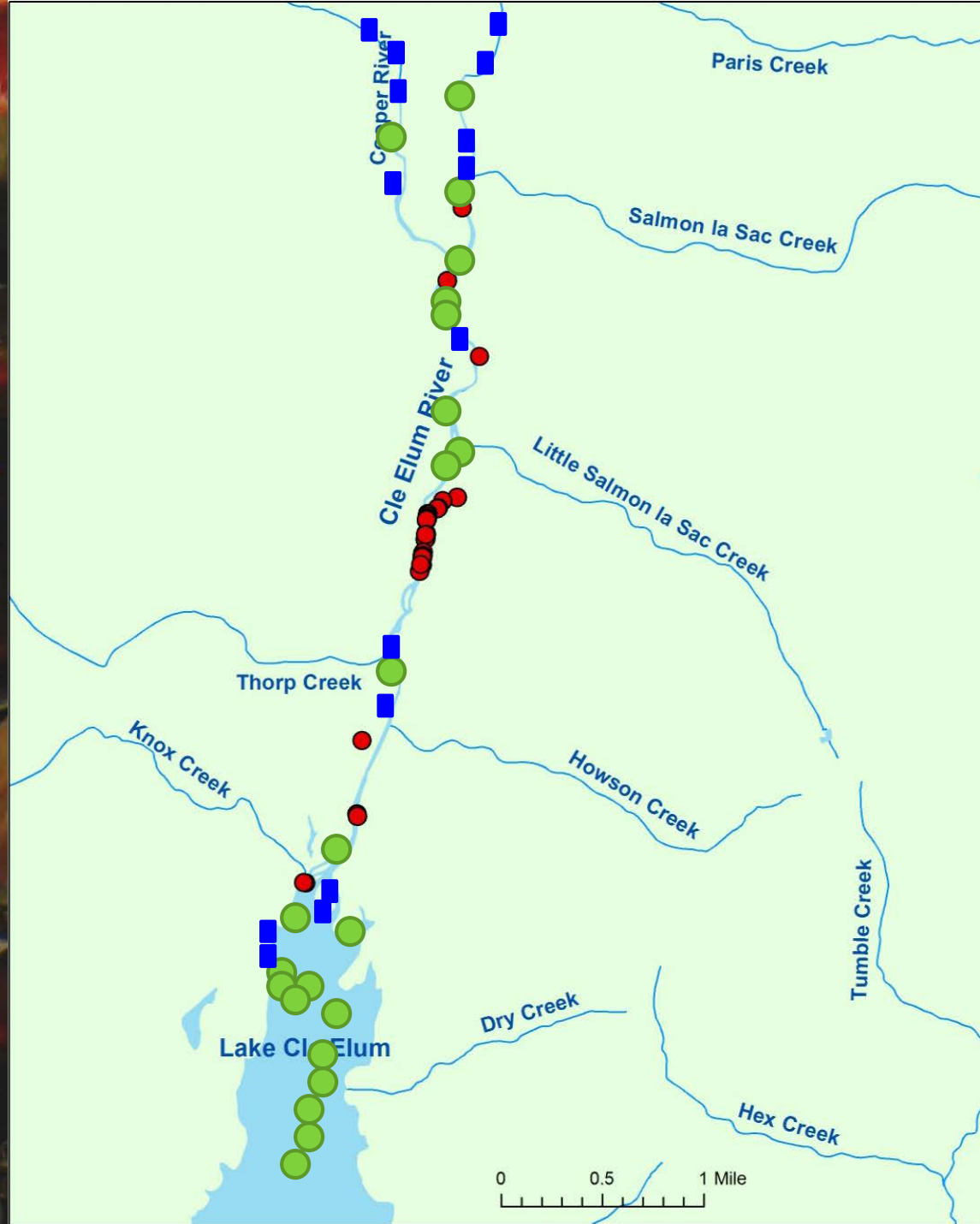
- After escapement goals are reached at Bonneville Dam returning sockeye adults were collected at Priest Rapids Dam
- The Adult take number was increased from 1000 in 2009 to 2500 in 2010 and 4100 in 2011.
- In 2010, 2000 to Cle Elum Lake and 500 to Cooper Lake
- In 2011, 3100 to Lake Cle Elum and 1000 to Cooper
- A total of 30 radio tagged adult sockeye were used in every year of the reintroduction

SPAWN GROUND ACTIVITY 2009 - 2011

Way points in **RED** is the area the Sockeye utilized in 2009. That was the first year of our reintroduction of 1000 adults.

The **GREEN** way points are from the 2010 reintroduction of 2500 Sockeye adults. In 2010 utilized the same spawning ground as in 2009 but expanded to new areas above the Lake.

The **BLUE** way points represents new expanded sockeye spawning habitat in 2011.



SPRING CHINOOK REINTRO:

- 2011, over 500 Spring Chinook reintroduced
- Chinook transferred on agreement \$
- 25 Chinook
- S-Line
- Moving sub-strait
- Adding Nutrients

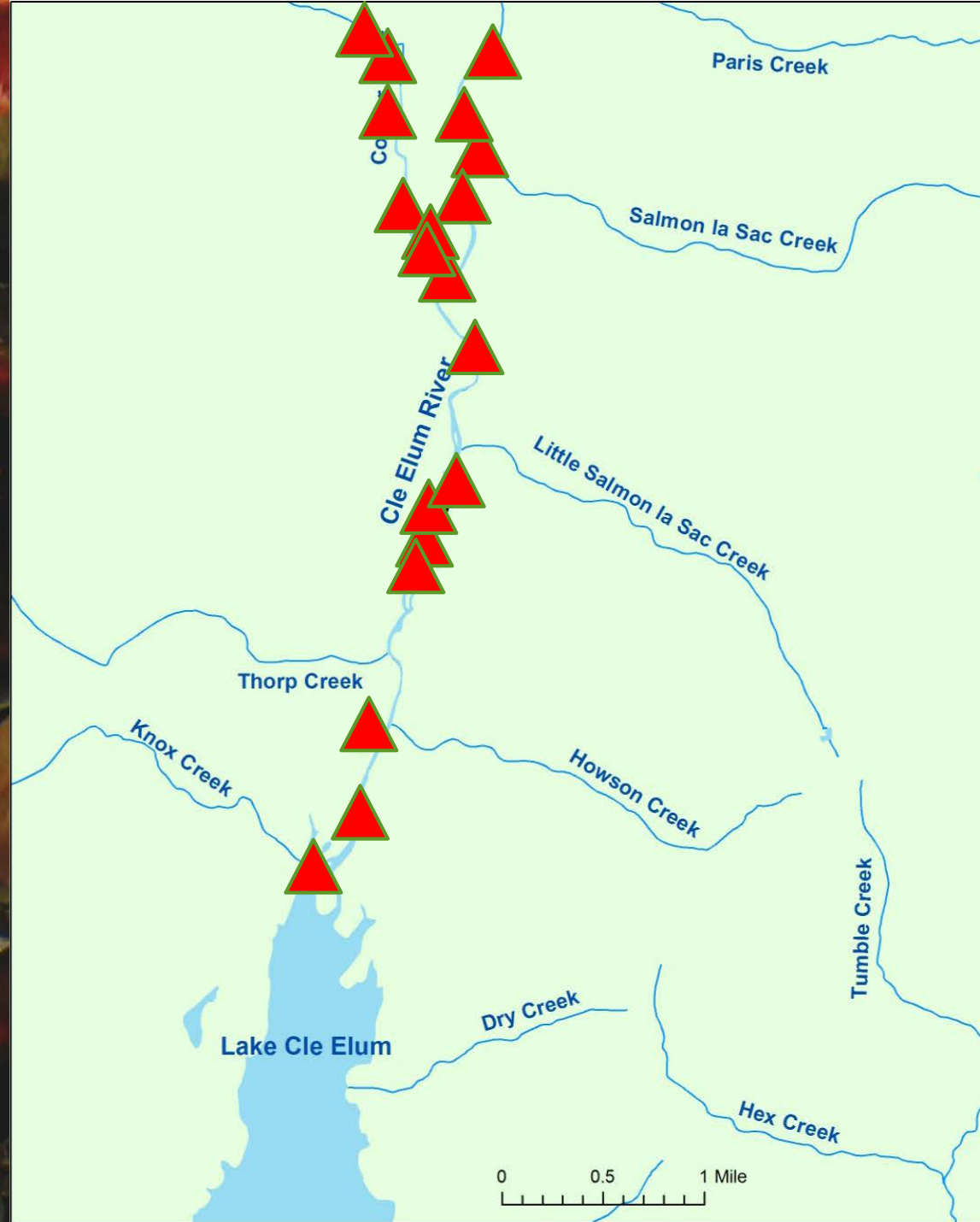


SPRING CHINOOK SPAWN ACTIVITY 2011

The **RED** triangle way points are Spring Chinook redds for 2011

548 Chinook transferred to Lake Cle Elum

7 redds in Copper River and 13 redds in main stem Cle Elum River



WHATS HAPPENING NOW

- **FEIS combined with NEPA & SEPA**

Prepared by Reclamation and Washington State Department of Ecology

- **ROD has been issued by BOR**

Record of Decision was signed August 12, 2011

- **Sockeye Take Sliding Scale**

Sliding scale generated by John Easterbrooks WDFW

- **Genetic Sampling of the two stocks**

Peter Galbreath, CRITFC came forward with funding for DNA sampling

FIRST SOCKEYE SMOLTS OUTMIGRATION

- Outmigration Smolts were trapped, PIT-tagged and measured
- Smolts captured and tagged allow expansion and estimate of emigration numbers and timing
- 2011 estimates of 80,000 smolts have out migrated

One of the first Sockeye smolts in over 100 years to leave Cle Elum Lake



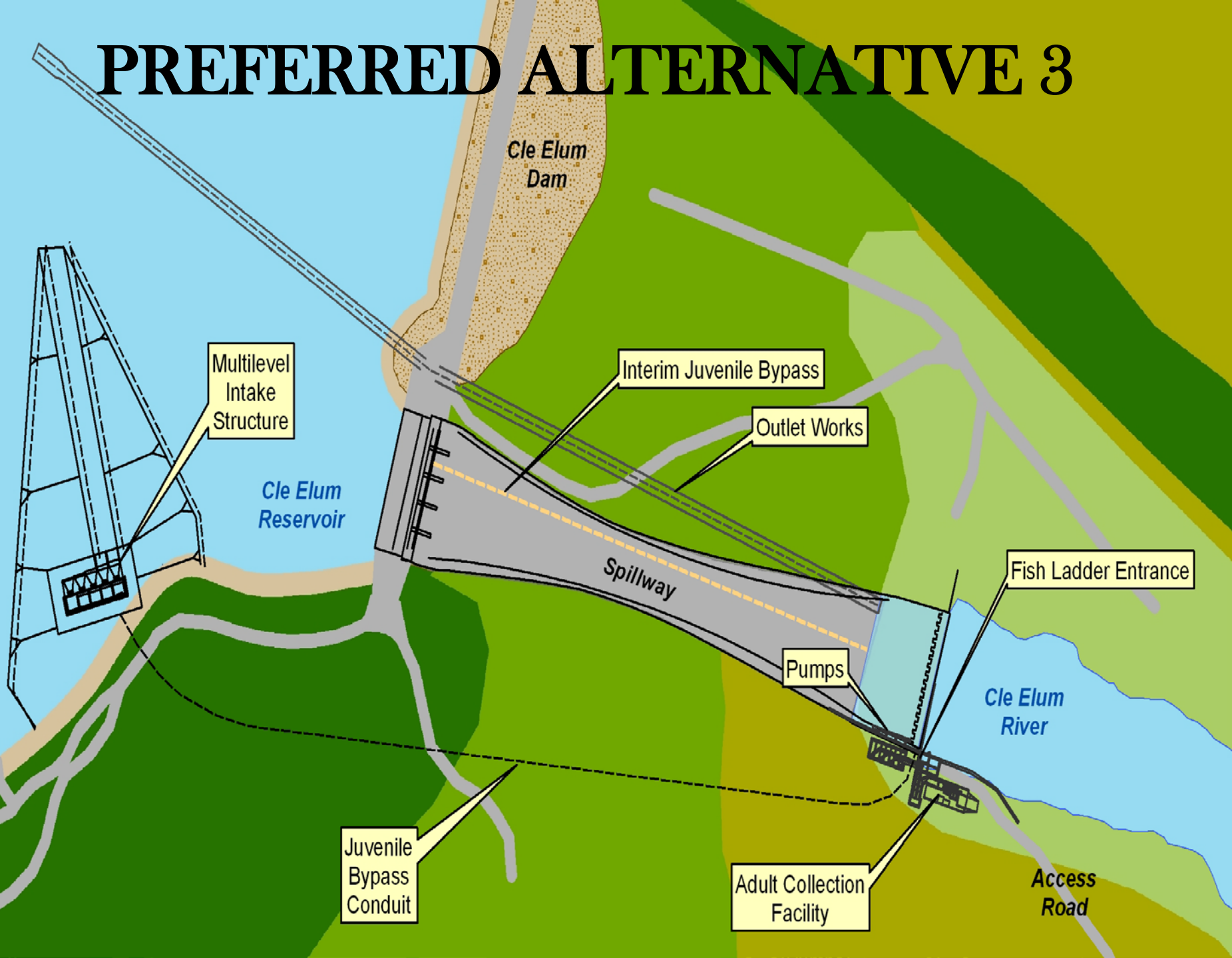
MACKINAW FISH DERBY



WHAT IS NEXT

- **Hydraulic Modeling**
- **Final Design**
- **Remove Mackinaw**
- **Search For Funding Sources**
- **Develop Holmes Property**
- **Brood Stock ID**

PREFERRED ALTERNATIVE 3



ACKNOWLEDGEMENTS

- Dr. Dave Fast
- Mark Johnston
- GCPUD
- Chris Carlson GCPUD
- John Easterbrooks (WDFW)
- Eric Anderson (WDFW)
- Yakama Nation Tech's
- Forest Service
- CRITFC

QUESTIONS?

