



# Yakima Bull Trout Action Plan

Draft  
May 2012



*Presented by:*  
Yuki Reiss

Yakima Basin Fish  
& Wildlife  
Recovery Board



# Authors

- ◆ Yuki Reiss (YBFWRB)
  - ◆ Jeff Thomas (USFWS)
  - ◆ Eric Anderson (WDFW)
  - ◆ Jim Cummins (WDFW)
- ◆ Input from the bull trout Core Area Team (various agencies)

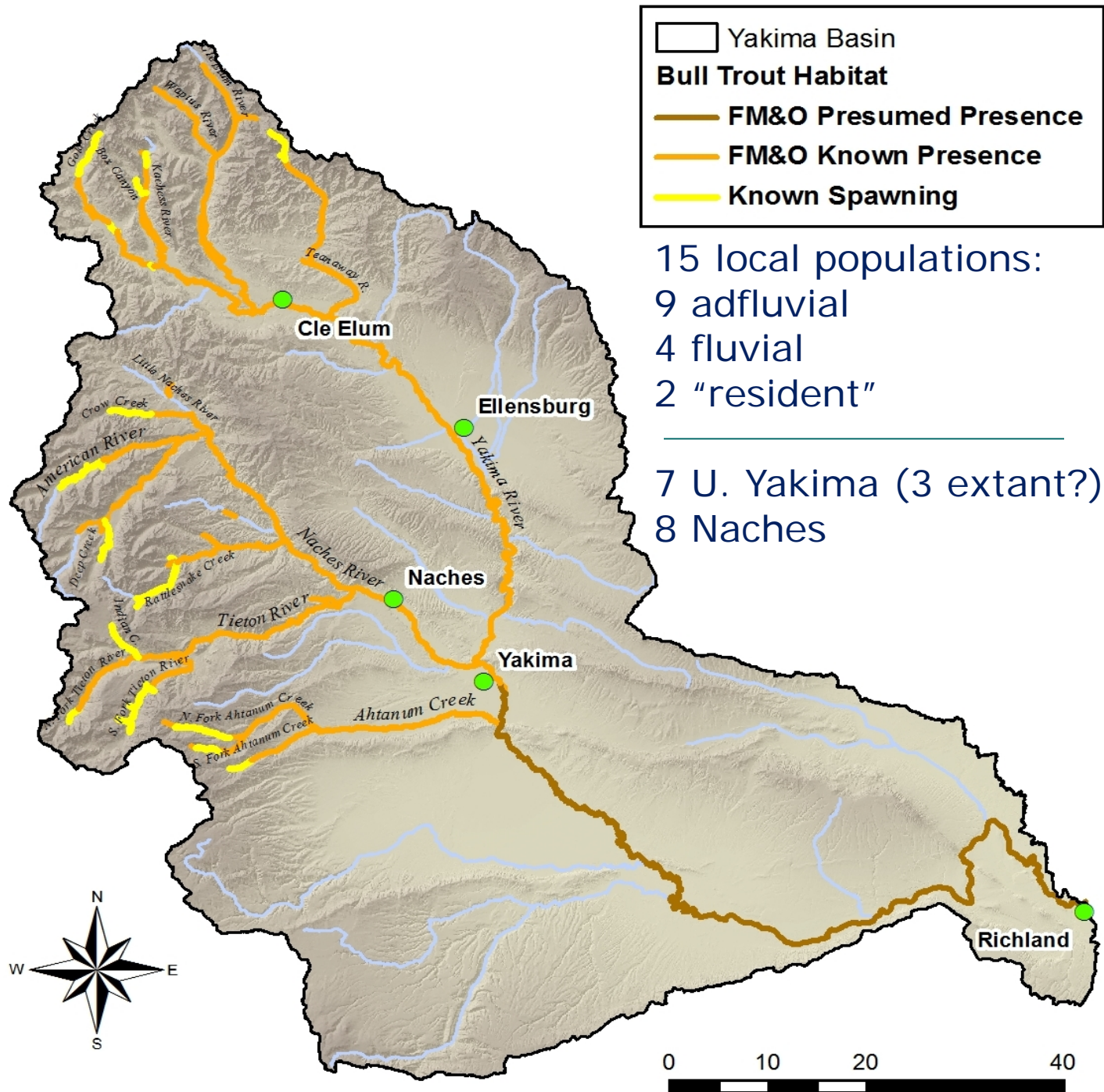


# Yakima Bull Trout Action Plan

## PURPOSE:

- ◆ ESA listing in 1998, no USFWS Recovery Plan to date
- ◆ Local consensus on prioritized actions
- ◆ “One stop shopping” for data on local populations



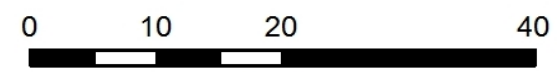
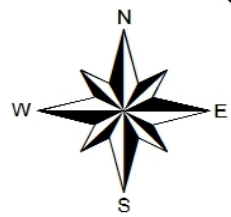


Yakima Basin  
**Bull Trout Habitat**  
 FM&O Presumed Presence  
 FM&O Known Presence  
 Known Spawning

15 local populations:  
 9 adfluvial  
 4 fluvial  
 2 "resident"

---

7 U. Yakima (3 extant?)  
 8 Naches





# Individual Population Information

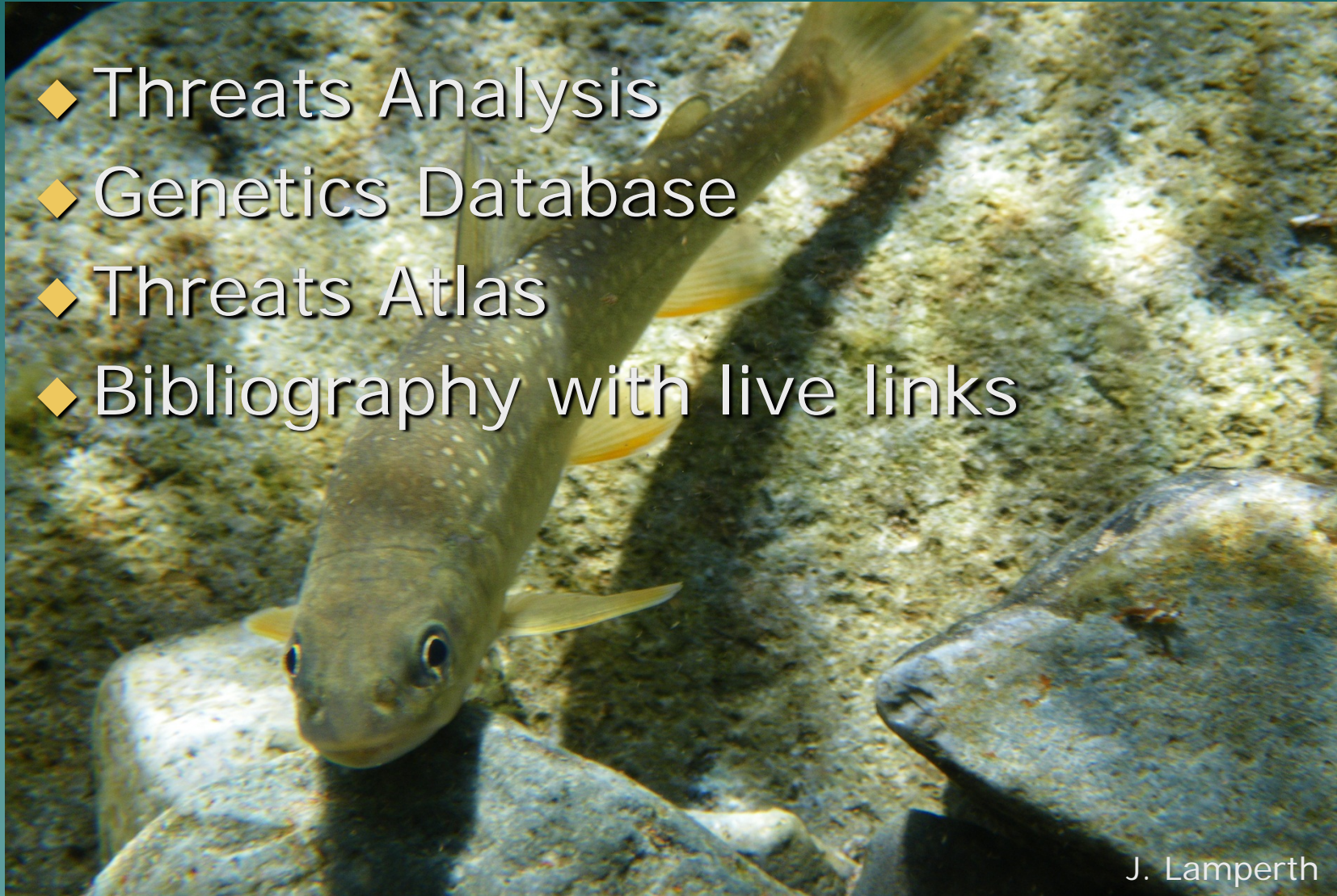
The background of the slide is an underwater photograph of a river. In the center, a large salmon is swimming towards the right, its mouth slightly open. To its left, another salmon is swimming upwards. In the foreground, the heads and mouths of several other salmon are visible, some appearing to be in a spawning run. The water is clear and blue, and the riverbed is covered with smooth, rounded rocks.

- ◆ Life history, connectivity, genetics, population monitoring history, redd count data
- ◆ Habitat overview, habitat monitoring history, summary of threats
- ◆ Actions
- ◆ Maps

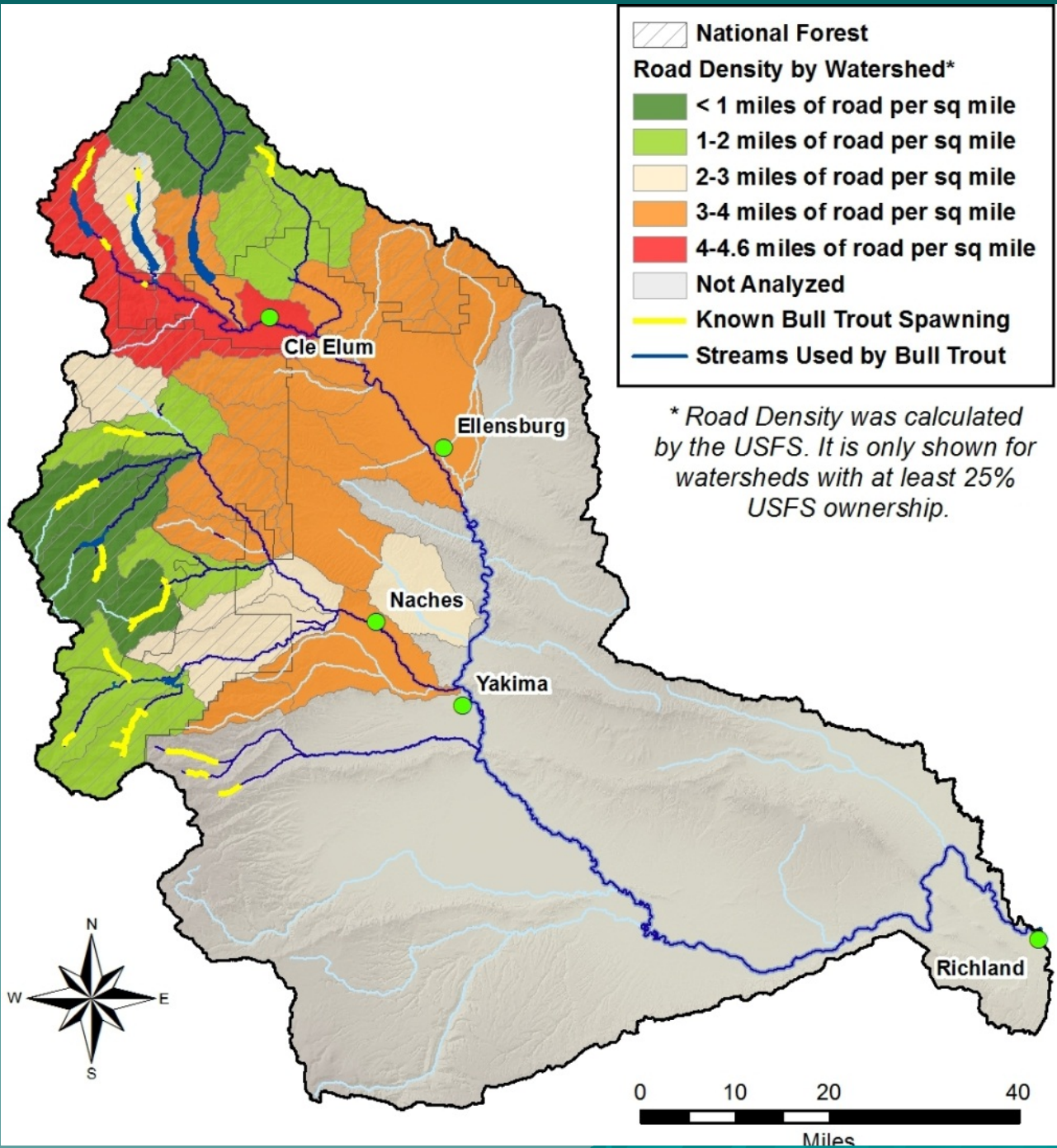


# Other YBTAP Elements

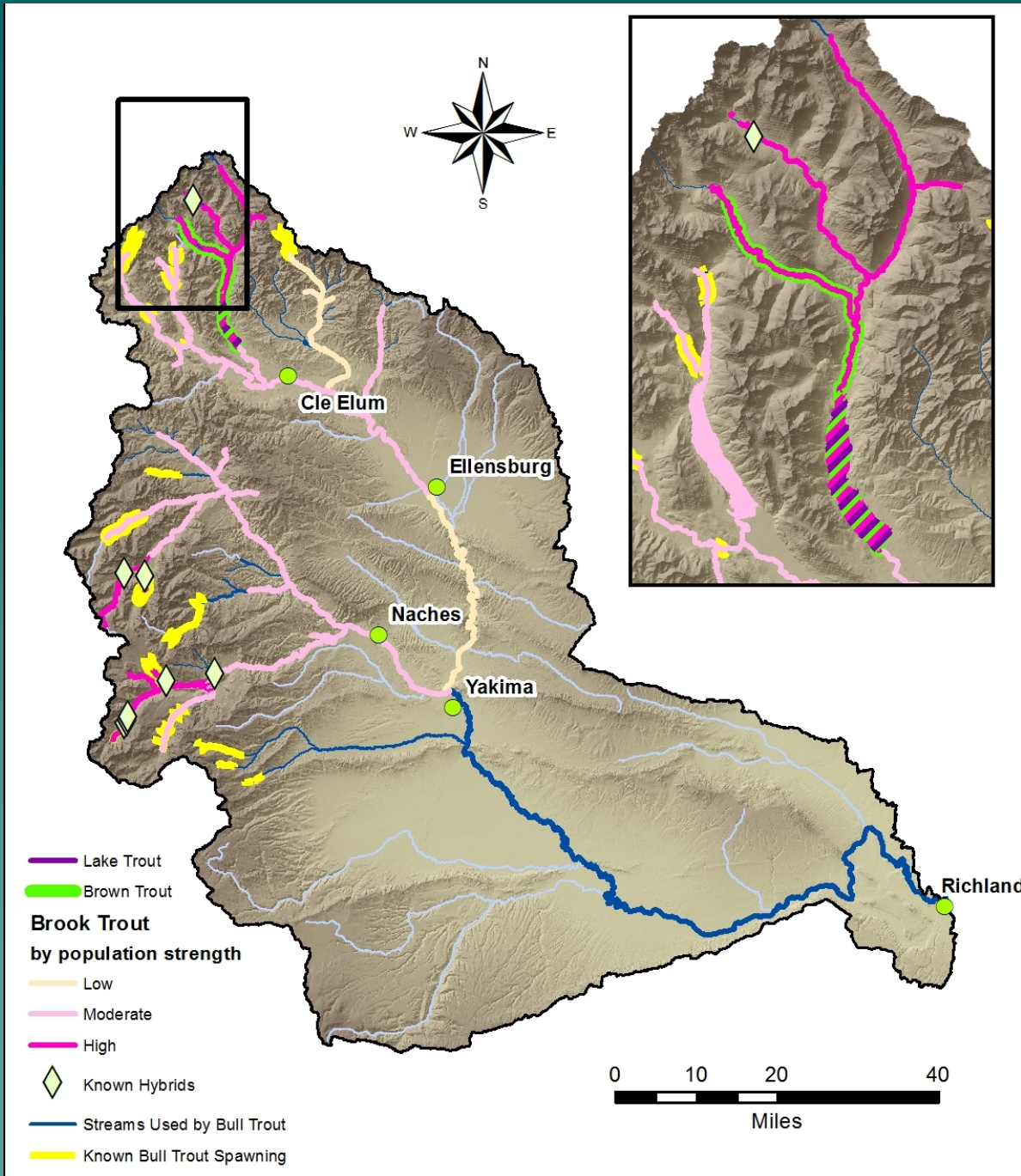
- ◆ Threats Analysis
- ◆ Genetics Database
- ◆ Threats Atlas
- ◆ Bibliography with live links







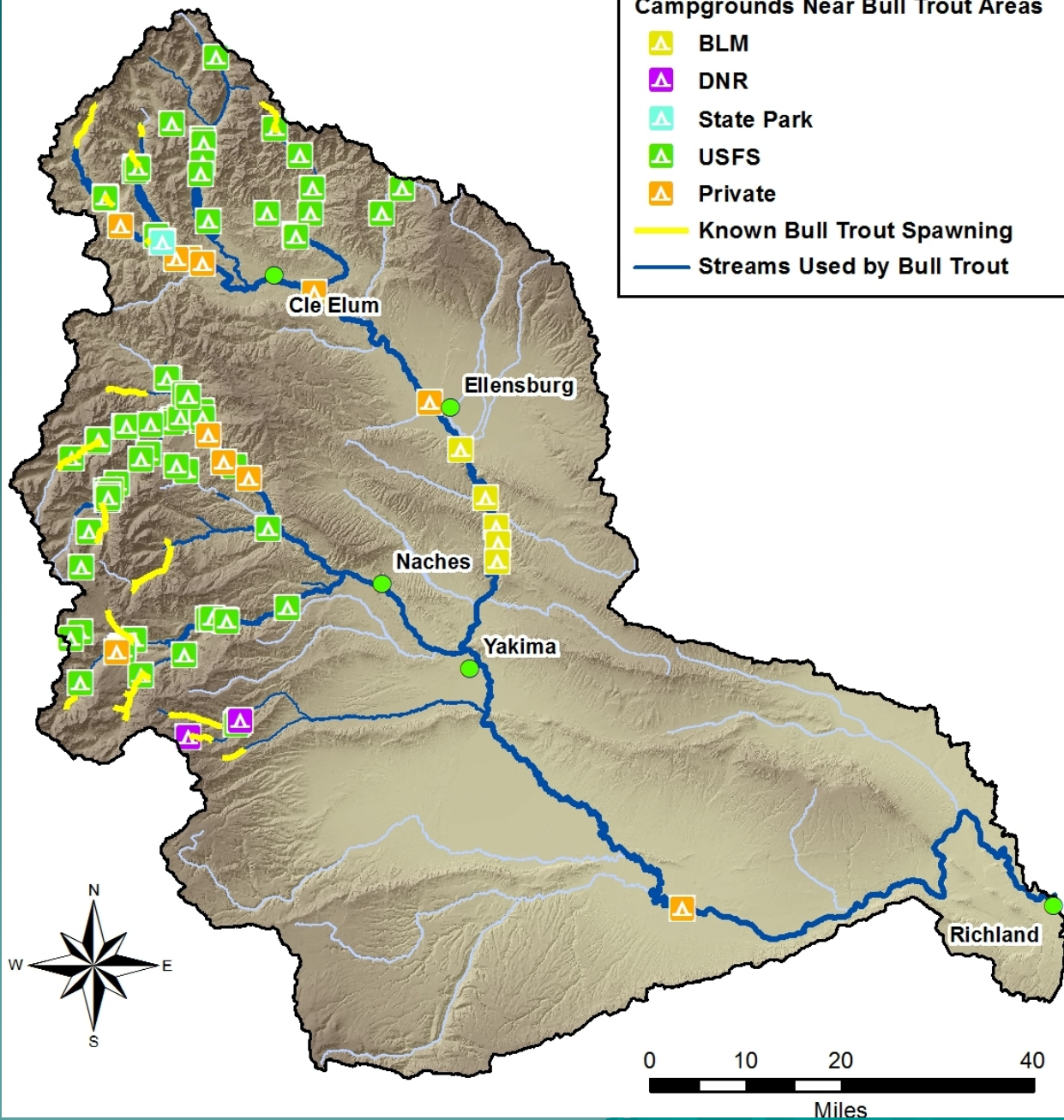






### Campgrounds Near Bull Trout Areas

- BLM
- DNR
- State Park
- USFS
- Private
- Known Bull Trout Spawning
- Streams Used by Bull Trout





# Action Categories

- ◆ Broad Scale
- ◆ Monitoring
- ◆ Individual Population
- ◆ Multiple Populations





# TRIAGE LOGIC

A large, colorful fish, possibly a rainbow trout, is swimming in a stream over rocks. The fish has a silvery body with a prominent pinkish-red stripe along its side. The water is clear, and the rocks are brown and textured.

- ◆ Highest severity threats = highest priority actions for each population
- ◆ Three population categories:  
ACTION, PROTECTION and MONITOR



**ACTION populations:  
Ahtanum, Box Canyon, Crow,  
NF Tieton, Gold**

A photograph of a stream flowing through a wooded area. In the foreground, a grey, semi-circular weir structure is installed across the stream, with a wooden plank bridge leading to it. To the right, a black pipe discharges into the stream. The stream bed is rocky, and the banks are covered with green vegetation and grass. The background shows more trees and a clear sky.





PROTECTION populations:  
American, Indian, Rattlesnake,  
S.F. Tieton, Deep, Kachess



# MONITOR populations: Cle Elum, Teanaway, Upper Yakima, Waptus





# Multiple Population Actions: ALL

- ◆ Bull Trout Task Force
- ◆ Redd surveys
- ◆ Temperature monitoring
- ◆ Evaluate supplementation
- ◆ Monitor brook trout introgression





# Multiple Population Actions: Select

- ◆ Naches floodplain protection
- ◆ Reduce entrainment at Rimrock Lake
- ◆ Periodic entrainment studies at dams



# TIER I: Ahtanum Creek





# TIER I: Box Canyon Creek





# TIER 1: Crow Creek

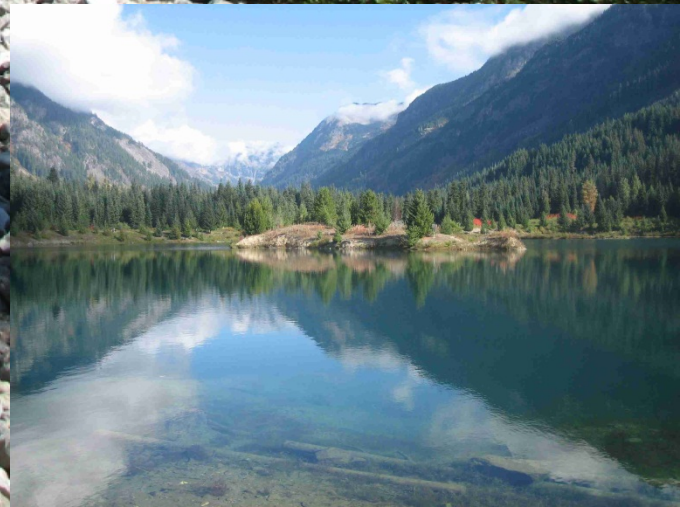
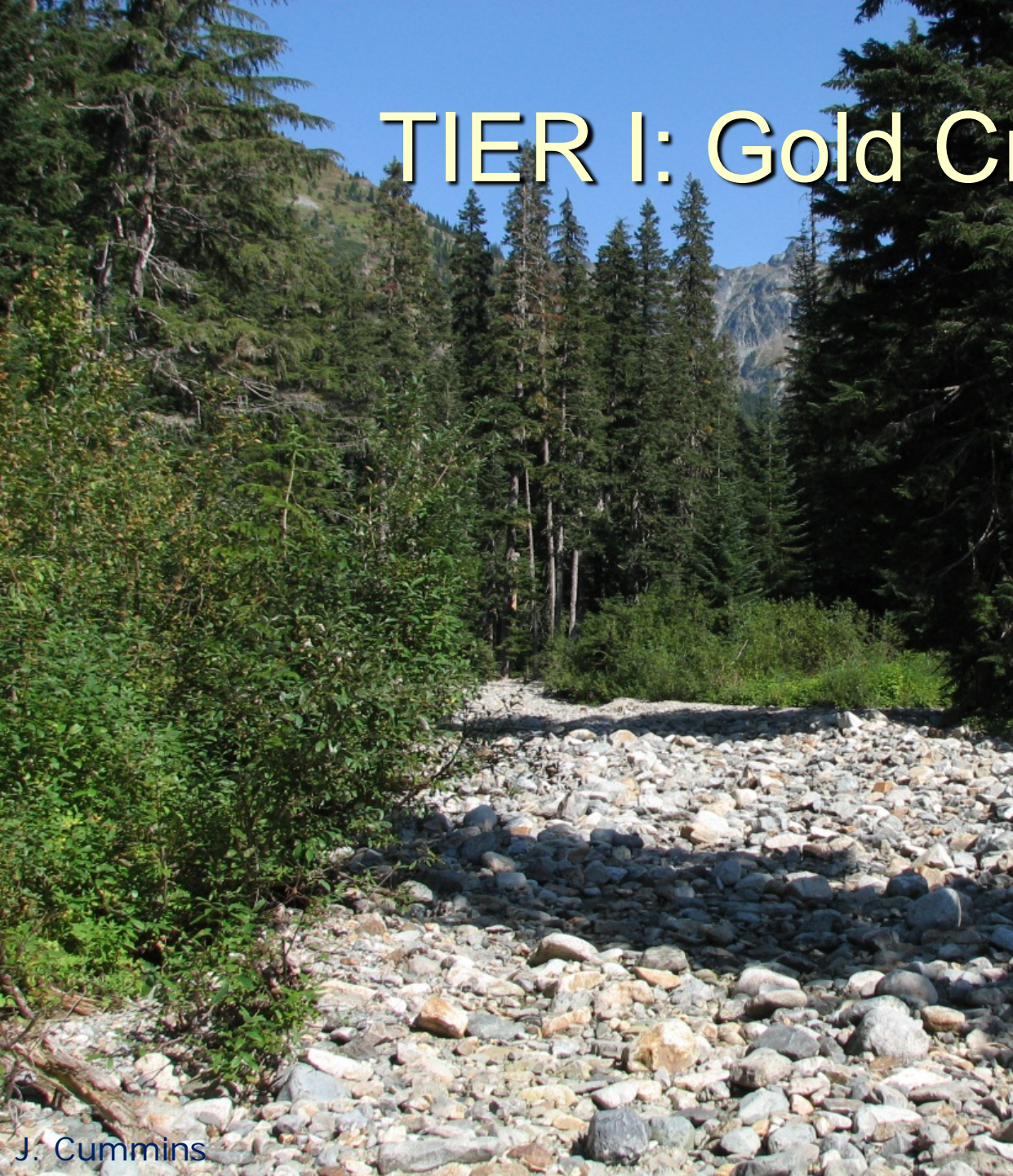


J. Trammell





# TIER I: Gold Creek





# TIER I: N. F. Tieton



Y. Reiss







◆ Public comment period June 1-July 2,  
2012

◆ Available on our website:

[www.ybfwrb.org](http://www.ybfwrb.org)

READY, SET, GO!