



Yakima Tributary Access & Habitat Program



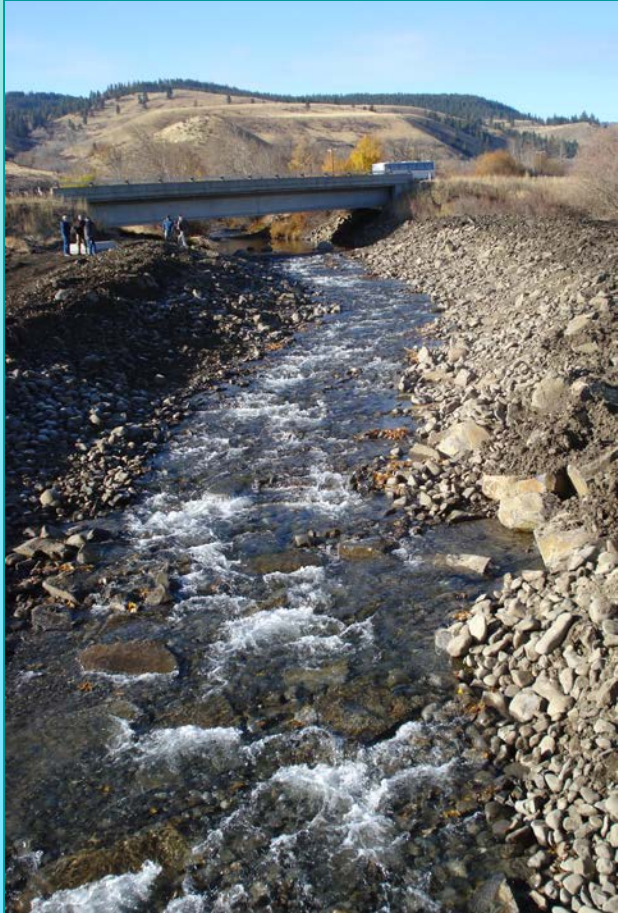
Presented by
Carol Ready
RC&D Council
June 2011

“Y-TAP”



Goals:

- Restore Salmonid **Access**
- **Screen** Diversions &
- Enhance **Habitat** Quality



Evolution: “Phase III”



- **2000**: Steelhead Listing + Workshop
- **2001**: BPA Solicitation + Action Plan
- **2002**: Grant Agreements + Designs
- **2002/3**: 1st Big Projects
- **2004/10**: Getting a Rhythm
- **2011**: Changes in RC&D add a twist

YTAHP

BPA



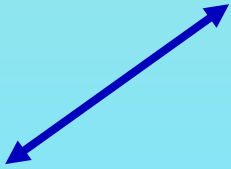
**KCCD
NYCD**



KCT



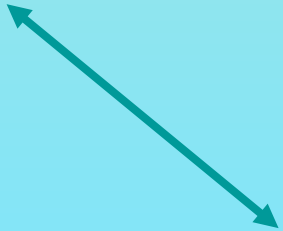
WDFW



MC FEG



YN



Strategic Plan

- Local Capacity Building
 - **Project Mgt, Engineering, Networking**
- Tributary Assessment (260 miles)
- Early Projects + Prioritized Projects
- Permit Specialist (**Jennifer Scott!**)
- ***Outside Grant \$*** for Construction
- Monitoring (up & down; pre & post)

Construction Funding



BPA: base program funding

Multiple + Mutual Objectives



- Salmon: Habitat & Passage
- Water Conservation
- Flood Mitigation & Infrastructure
- Community Education
 - K-12, CWU
- Recreation
- Local & Regional Benefits

2010: 13 Projects

- 6 Passage: dams, levees
 - 9 Screens: 6 gravity, 3 pump
 - 7 Instream habitat: rock, wood
 - 7 Riparian habitat: reveg, fencing
 - 7 Riparian O&M
 - 24 Projects - planning, design, permits
-
- ~ \$2 Million from all sources


2002-2010: 86 Projects

- 35 Passage: dams, levees
 - 58 Screens: 21 gravity, 37 pump
 - 30 Instream habitat: rock, wood
 - 30 Riparian habitat: reveg, fencing
 - 4 Siphons (~300 cfs)
 - 100s of Potential Projects
-
- > \$12 Million from all sources

2002-2010 Metrics*

- **≥ 110 cfs** Screened (pump, gravity)
- **> 34,000 AF** Screened
- **> 50 Miles** Habitat Opened
- **>> 100** Rock Weirs & LWD
- **>30 Acres** of Riparian Planted
- **+** Metering, Fencing, Off-channel watering, rocked crossing, culverts

YTAHP FY10 Projects



- **KCCD:** Cherry, Coleman, Dry Creeks
- **KCT:** Taneum, Swauk
- **NYCD:** NF Ahtanum, Cowiche, Wenas
- **MCFEG:** Reecer, Cowiche, Naches

Cherry Creek Projects



Gravity/Pump Screens, Passage



Anna Lael

**Kittitas County
Conservation District**

Dewatering, Fish Salvage



Construction





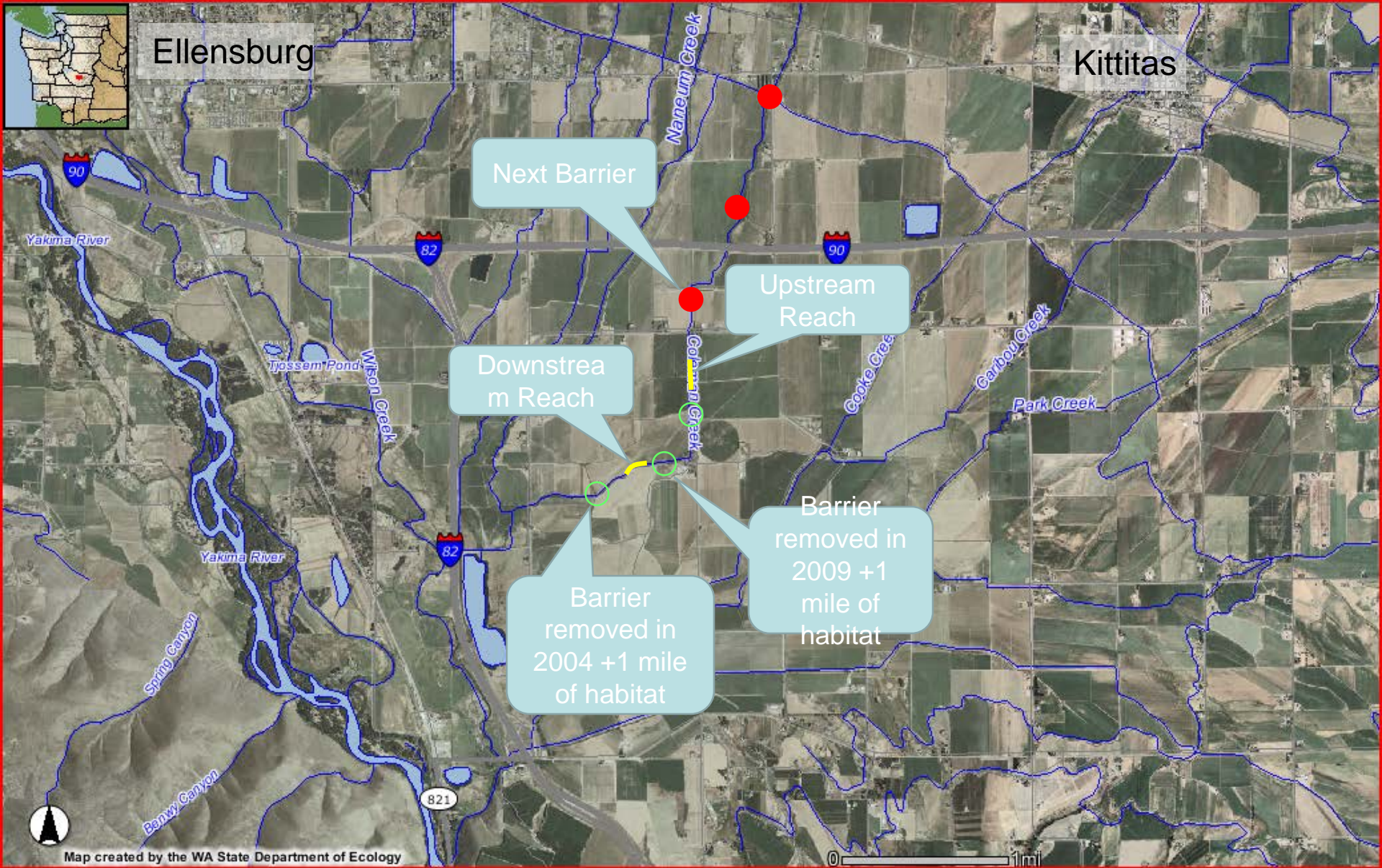
Passage



Coleman Creek



Gravity to Pump Diversion



Coleman Creek Monitoring Sites

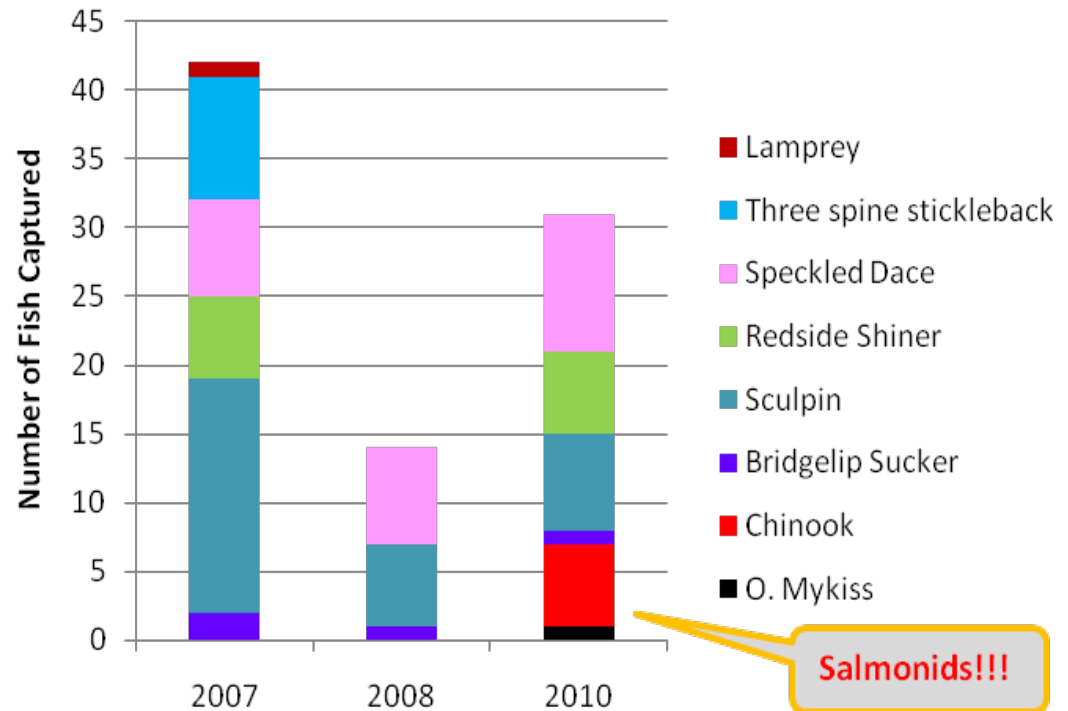
Coleman Monitoring



2004 Coleman Project

Jennifer Scott

Upstream Barrier Coleman Creek



Salmonids!!!

NF Ahtanum Gauge Station

Barrier,
Gauge



Mike Tobin, Justin Bader



**North Yakima
Conservation District**

Cowichee Ditch, Cowiche Crk



Cowichee Ditch, Cowiche Crk



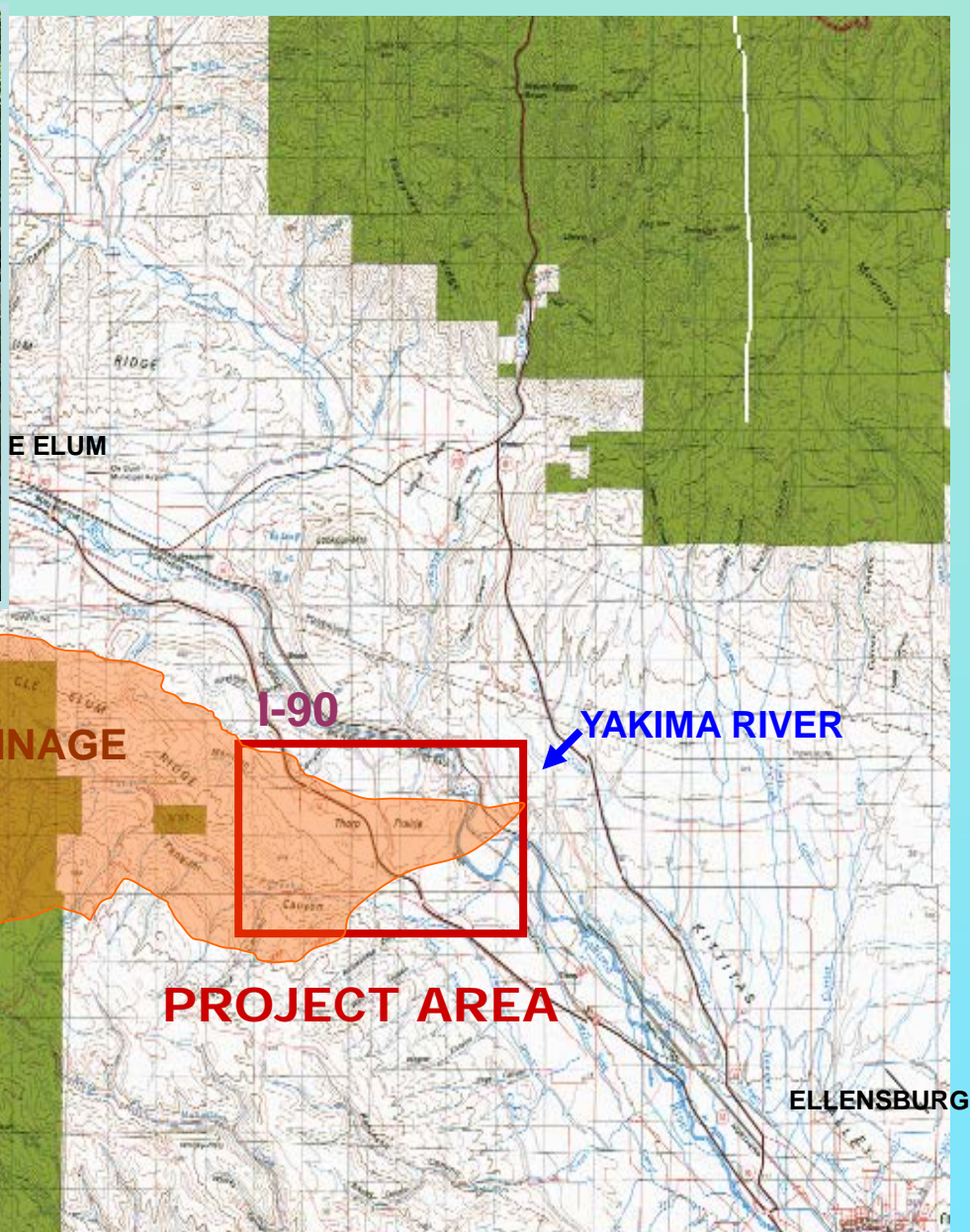


Taneum Canal Company

- Fish Passage
- Old Dam
- Head Gates
- Trash Rack

David Gerth



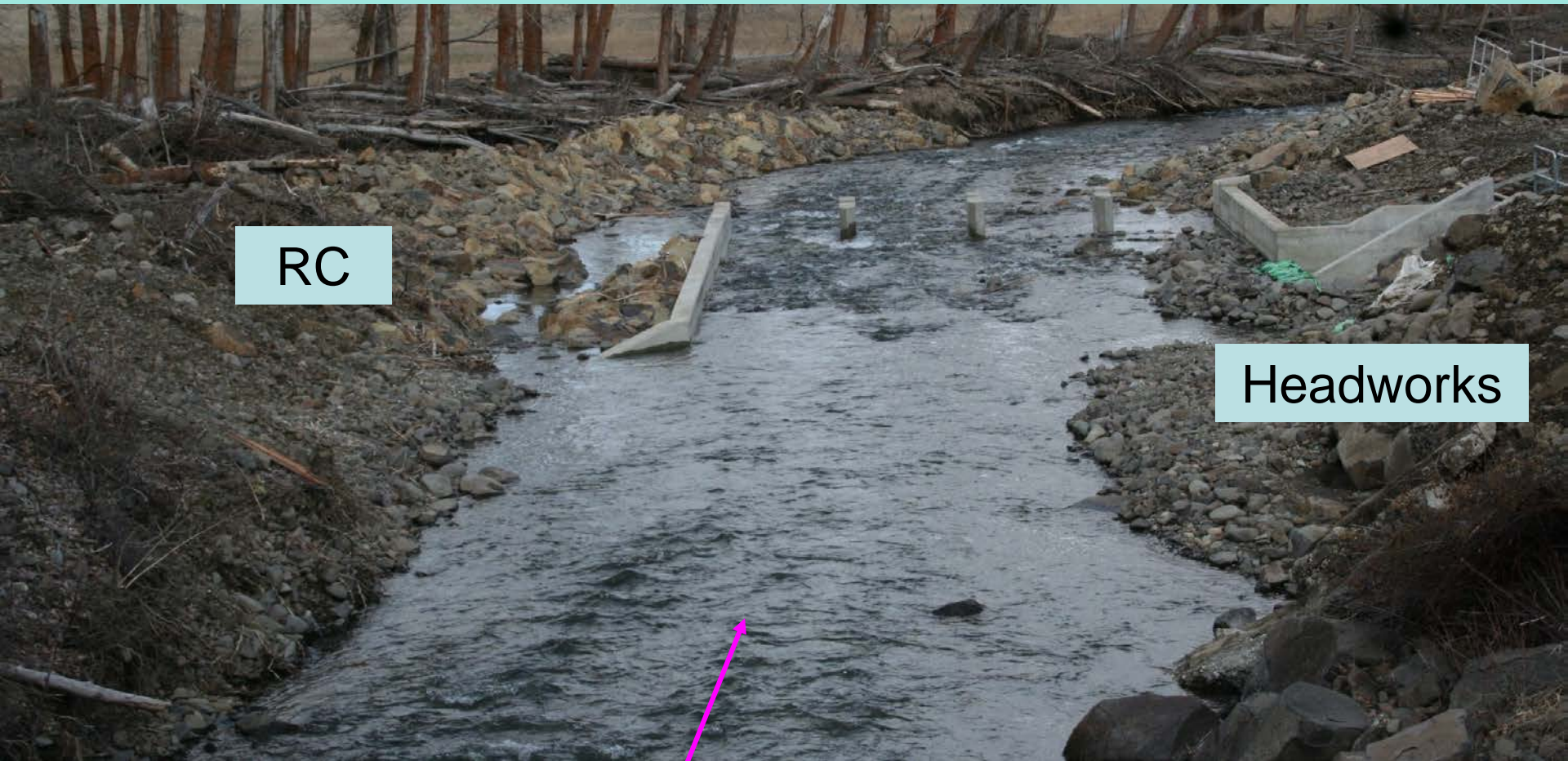


Taneum Creek Watershed drains 83 square miles of Federal, State and Private lands. Confluence at Yakima RM 165.

Taneum Creek - TCC

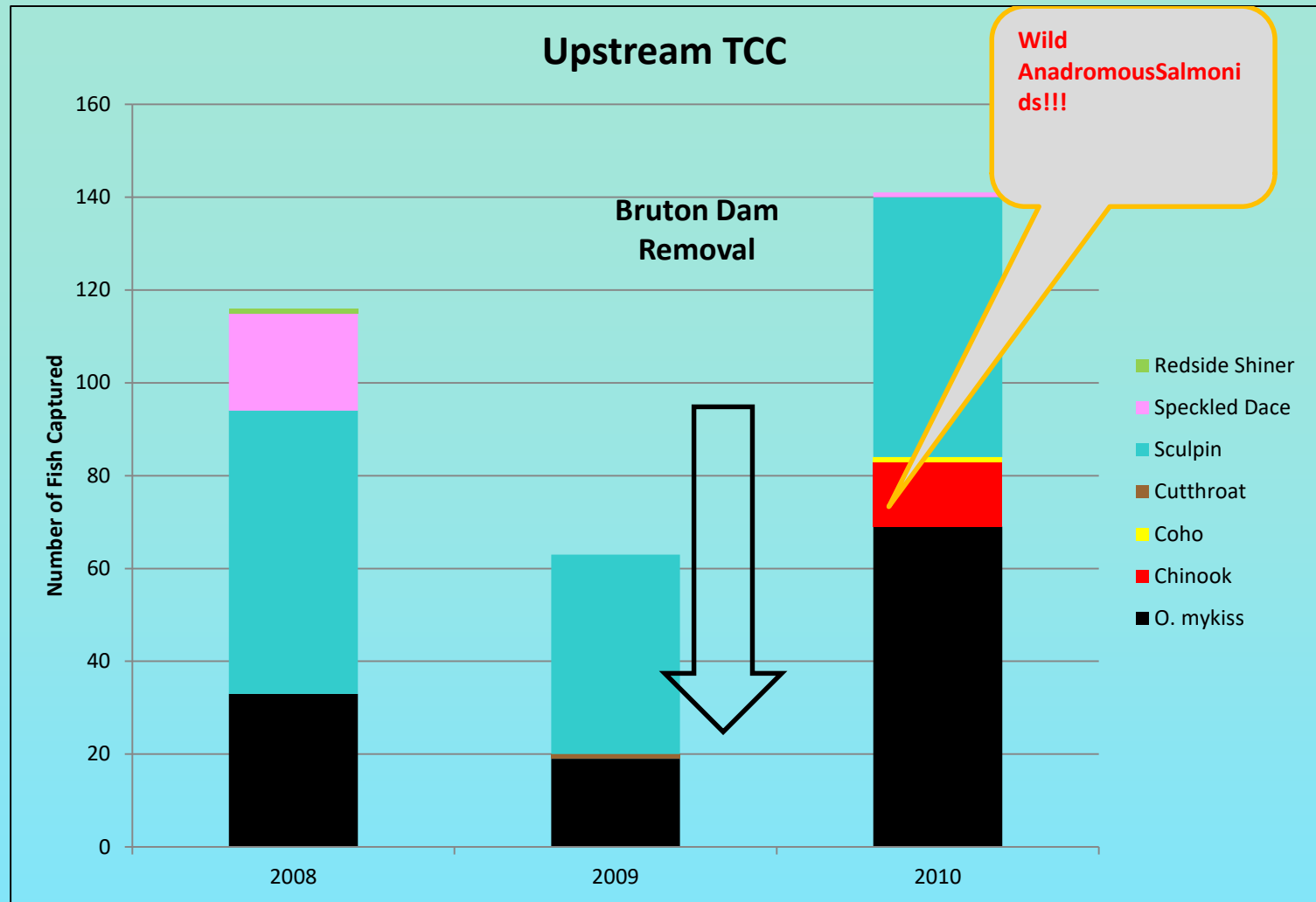


TCC, Roughened Channel



RC

Headworks



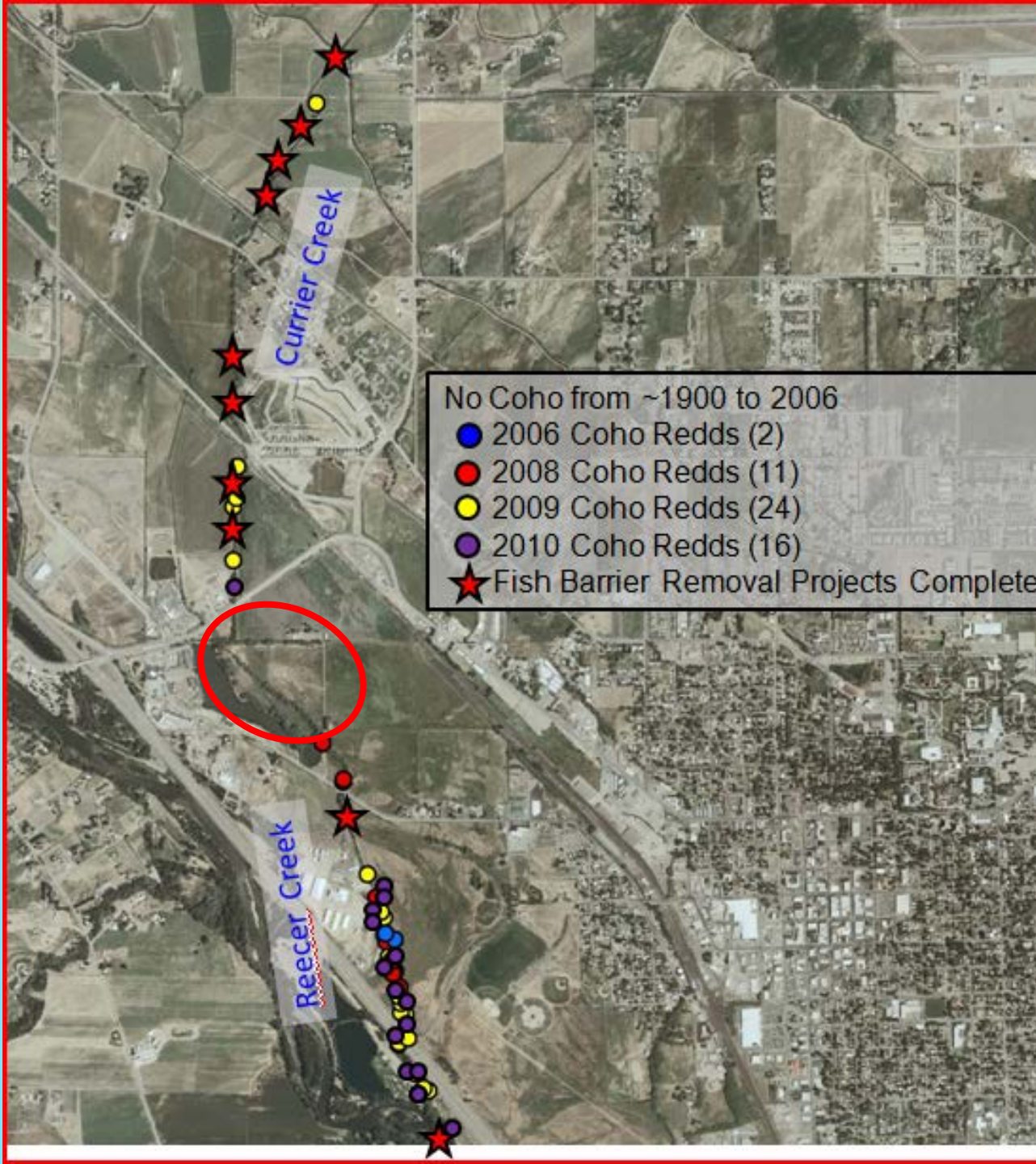
- **Chinook** were able to move through after removal of Bruton (before TCC project)
- Increased **O. mykiss** may be reflecting large steelhead run

Cle Elum ELJs



KITTITAS
CONSERVATION
TRUST

Reecer-Currier Creek





06.13.2011

Reecer Creek Floodplain

City of Ellensburg

Flood Management

Habitat

Recreation

Educational Opportunities



Floodplain + New Channel







Yunker, Pott, Parke





Jack & Indian Creek Culverts

Questions?



06.08.2011

