

# Reecer Creek Floodplain Restoration

A dirt path leads from the foreground into a field of tall grass and brush. In the background, there is a line of trees and a range of hills under a blue sky with light clouds.

Carol A. Ready, MS

YTAHP / RC&D

June 12, 2008



# Relationships

- **YTAHP**
  - Grants, Project Development & Coordination
- **City of Ellensburg**
  - John Akers, PE, Public Works Director
  - Brad Case, Parks & Recreation Director
- **WDFW**
  - Gina McCoy, PE; River Geo-morphologist
- **Mid-Columbia RFEG**
  - Construction Contracting



Dolarway Road

**Legend**

- Roads
- Highway/State Route
- Irrigation
- Hydrology
- Cities

# Reecer Creek Floodplain

West Ellensburg Park

I-90

~69 acres





**Historic Floodplain**



**Levee**



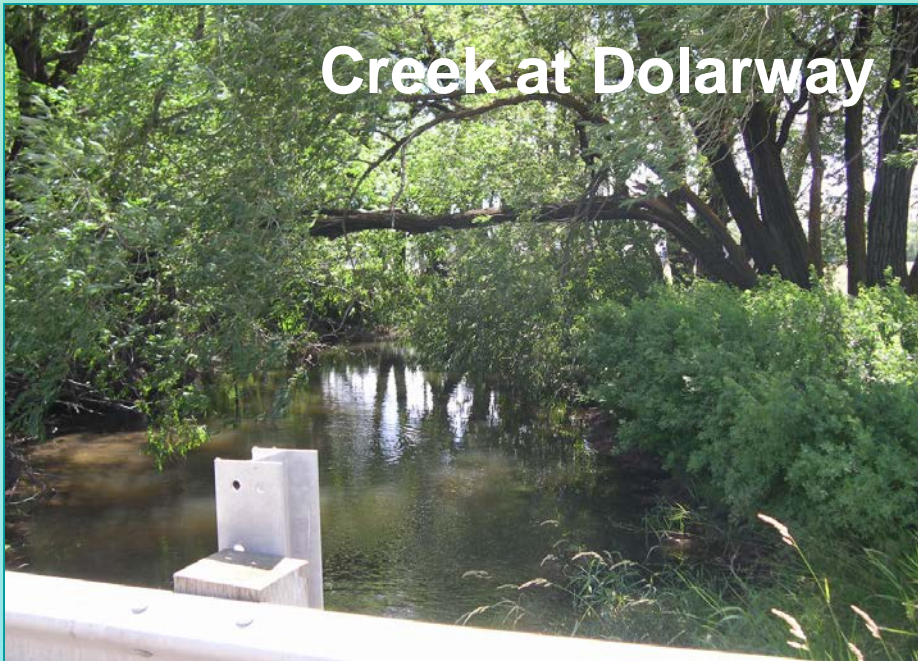
**Existing Ponds**



**Truck on Bridge**



**Creek at Dolarway**



**Below I-90**



**Confluence**



**Side Channel**





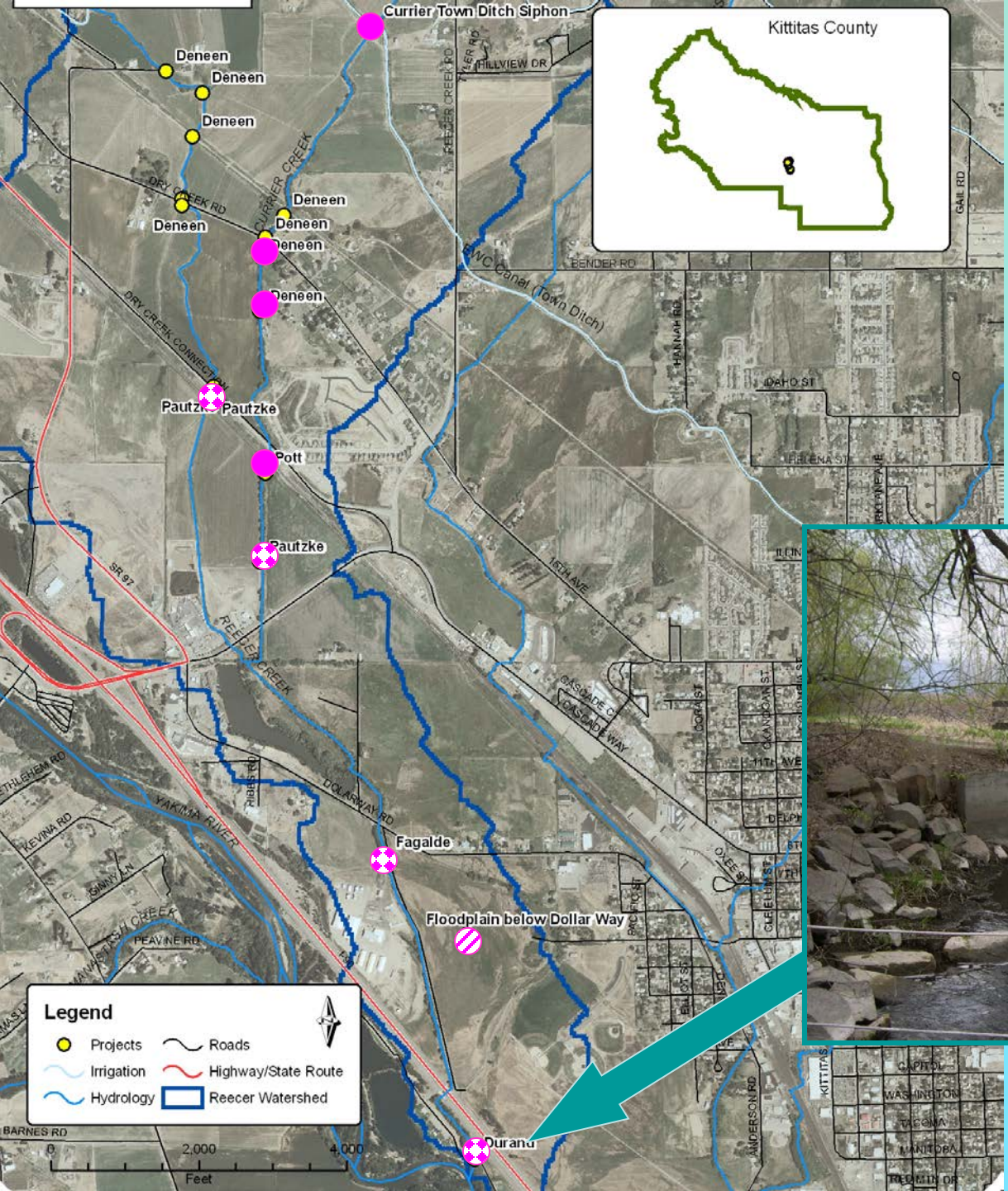


## Monitoring in Reecer/Currier



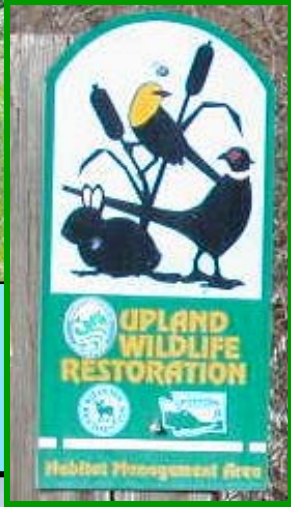


# Reecer Creek & Currier Creek





# Upstream Habitat Conditions: Reecer + Carrier





# To Date






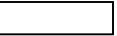






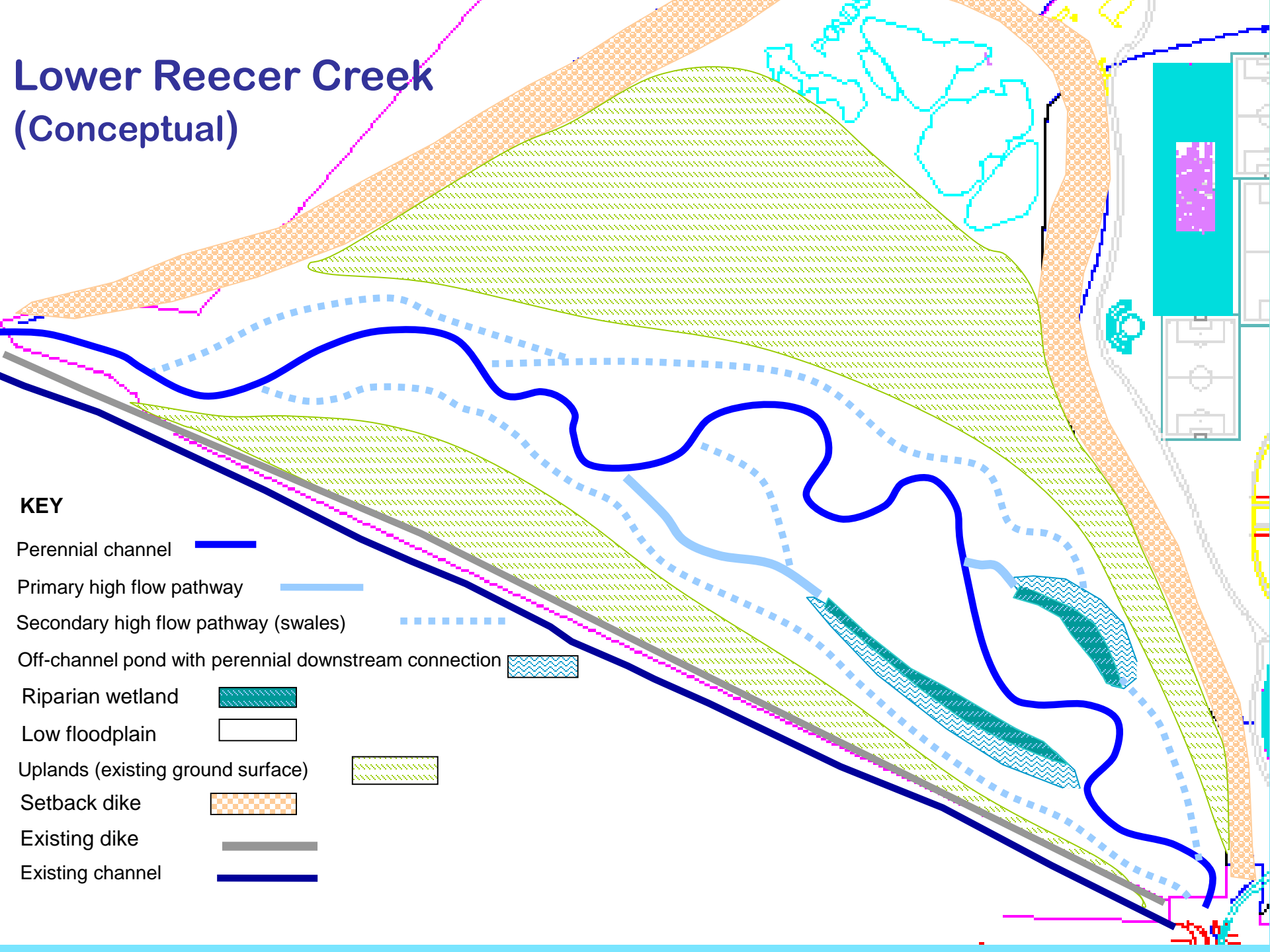
- Surface & Groundwater Monitoring
- Conceptual Design
  - TWiG
- Revegetation Plan development
- Permit Preparation
- Grant Writing (75% funding secured)
- Coordination



# Lower Reecer Creek (Conceptual)

## KEY

- Perennial channel 
- Primary high flow pathway 
- Secondary high flow pathway (swales) 
- Off-channel pond with perennial downstream connection 
- Riparian wetland 
- Low floodplain 
- Uplands (existing ground surface) 
- Setback dike 
- Existing dike 
- Existing channel 

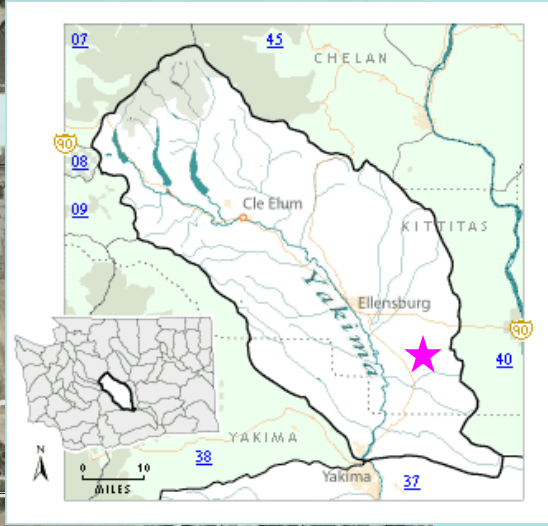




# Design Objectives

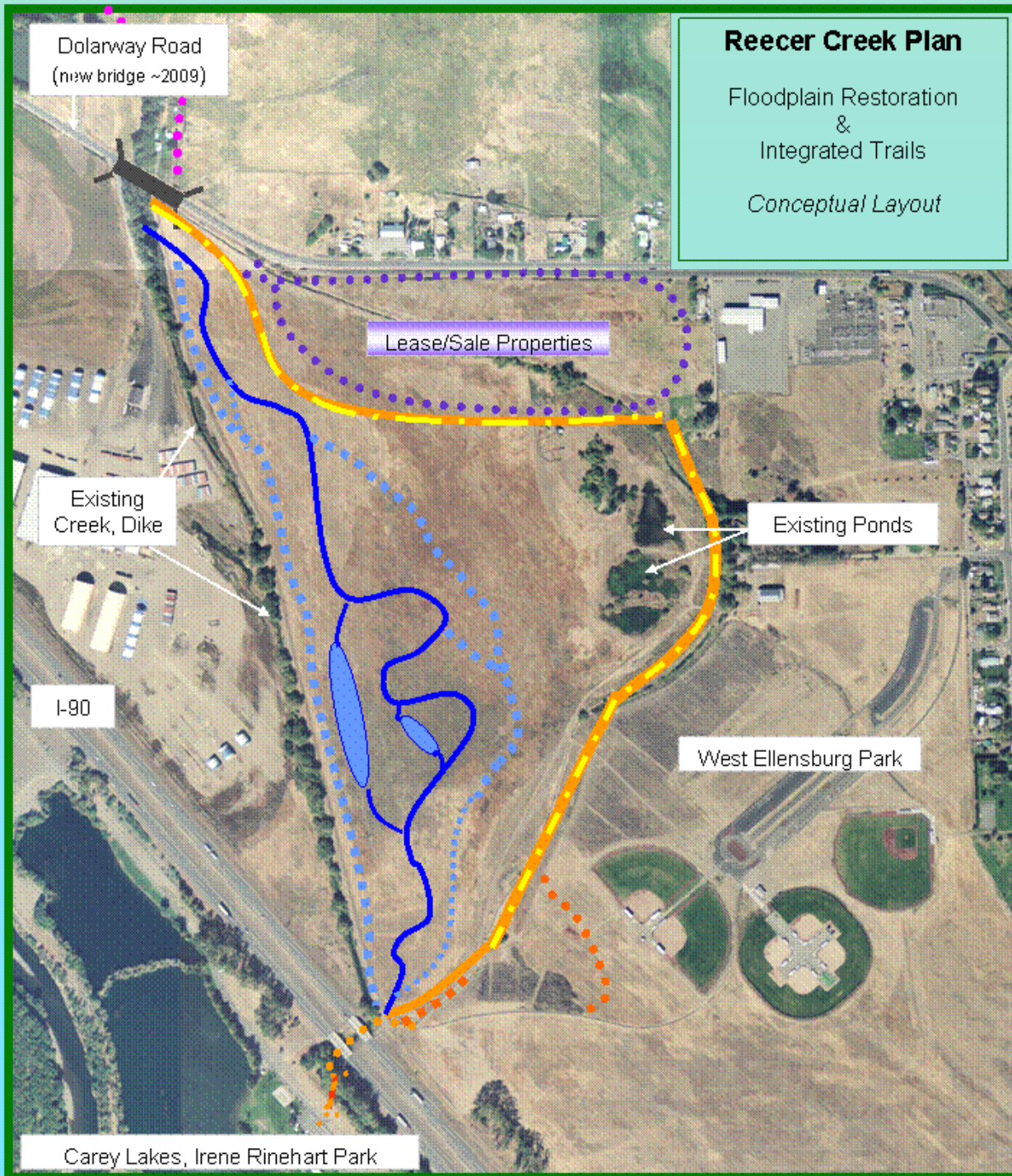
- Main & High Flow Channels, Ponds
- Low Profile
  - Access Floodplain
  - Support natural sediment transport
- Extensive Native Revegetation
  - 2+ Seasons of growth prior to levee breach
- Riparian/Floodplain Roughness
- Setback Levee





# Reecer Creek Existing Conditions





# Reecer Creek Proposal

Floodplain Access

Habitat:

Fish

Wildlife

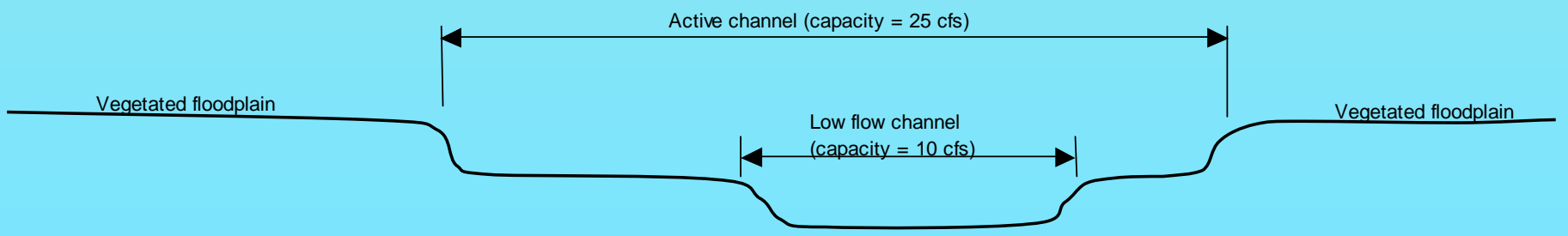
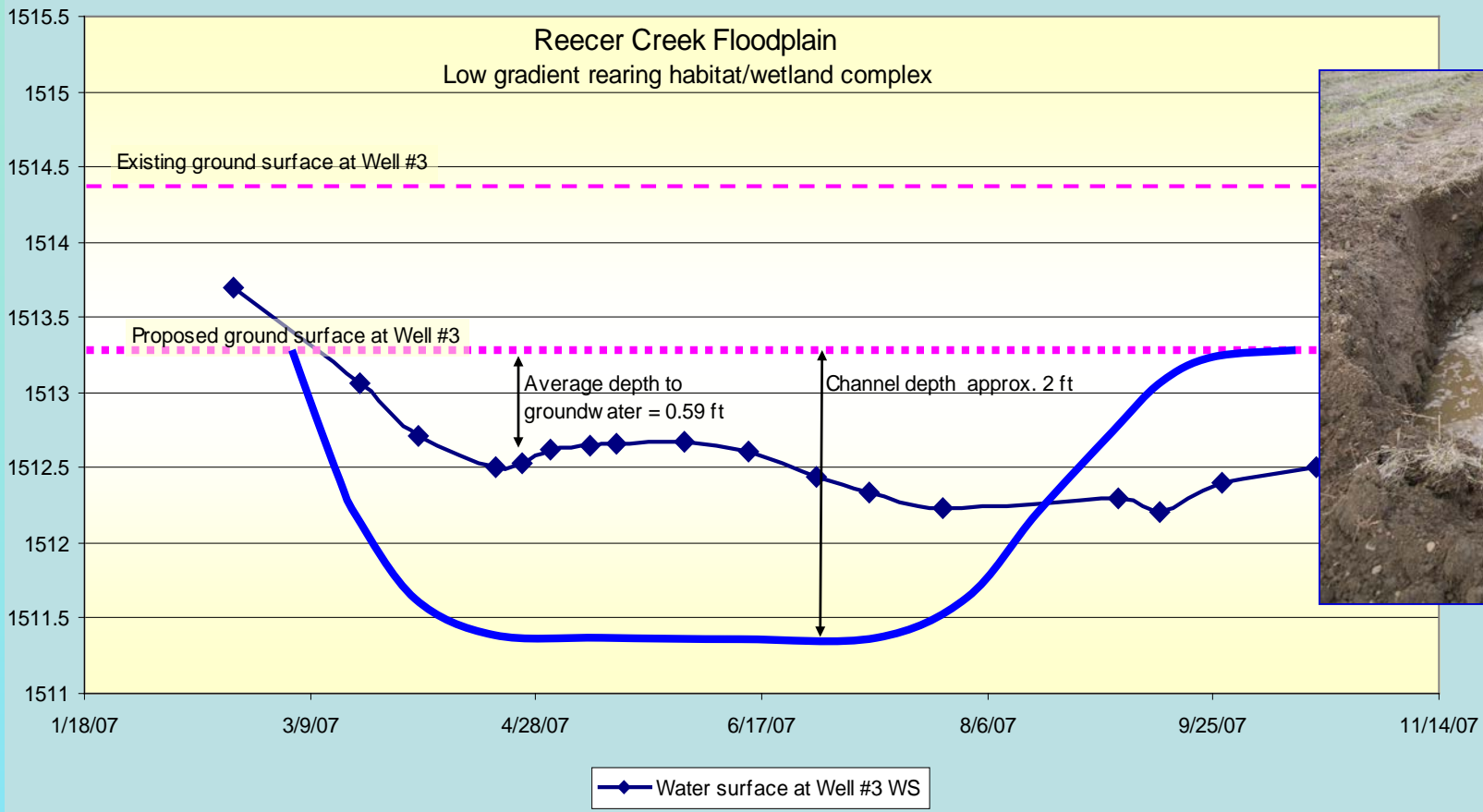
Opportunities:

Trails

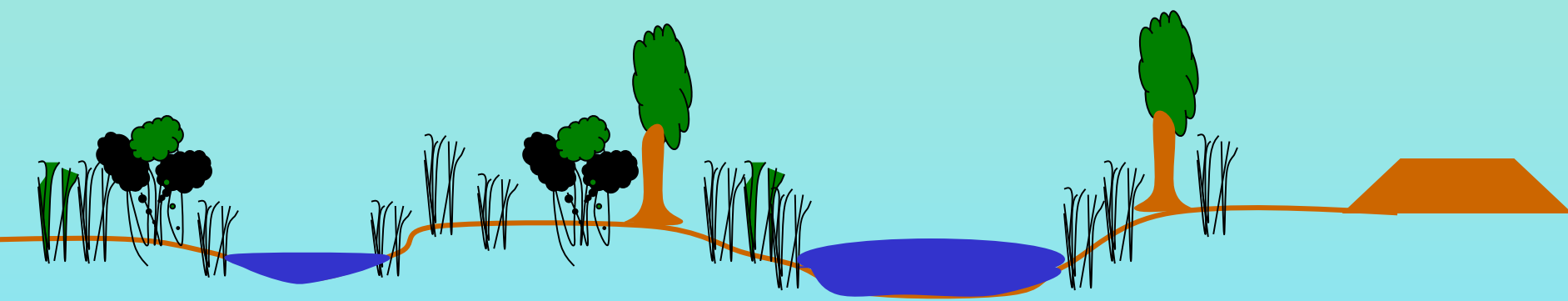
Education

Setback Levee







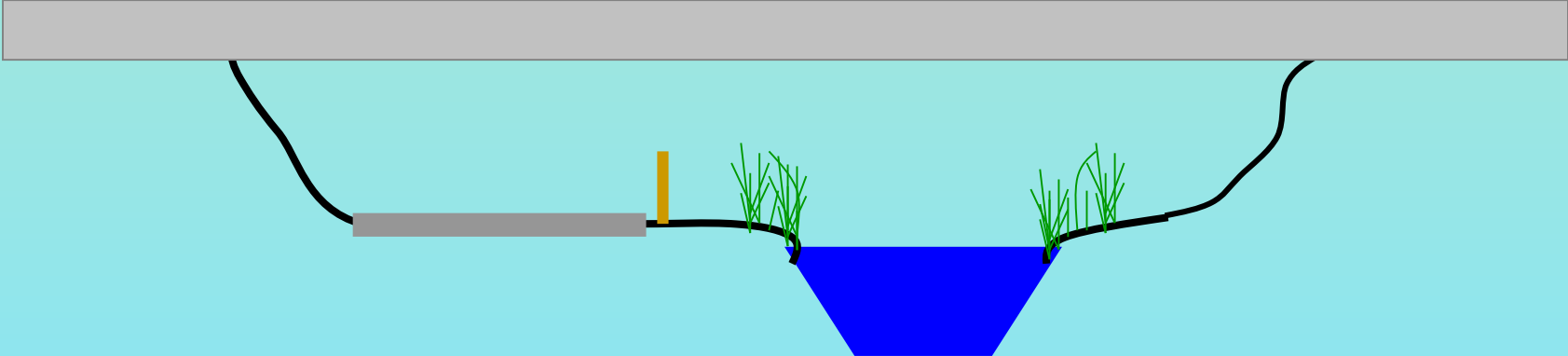


**High Flow Channel**

**Main Channel**



# Under & Below I-90



# Funding

- **SRFB:** \$404,000 ✓
  - **Ecology:** \$223,000 ✓
  - **Other:** \$220,000 (NOAA?)
  - **YTAHP:** \$47,000 ✓
  - **City:** In-Kind\*
- 
- \$894,000



# Outreach & Education



Informational Kiosk



Salmon Release



# Related Activities

- **YTAHP** – KCCD, KCT, YN, WDFW
  - Fish Monitoring, Screening, Passage
- **Kittitas Audubon Society** – Signage
- **Salmon in the Classroom** – Education
- **CWU** – Research Opportunities...
- **Trails** – John Wayne (private); Canyon (CLC)
- **YN** – Coho Reintroduction



# **Yakima Tributary Access & Habitat Program**



**Anna Lael-KCCD**

**Dave Myra-RC&D**

**Carol Ready-RC&D**

**Hank Fraser-YN**

**Mike Tobin-NYCD**

**Jen Scott-WDFW**

**David Gerth-KCT**