

# Reecer Creek Floodplain Restoration

A dirt path leads from the foreground into a field of tall grasses and shrubs. The path is flanked by dense green trees and bushes on the right side. In the background, there are rolling hills under a blue sky with light clouds.

Carol A. Ready, MS

YTAHP / RC&D

June 17, 2010



# Relationships



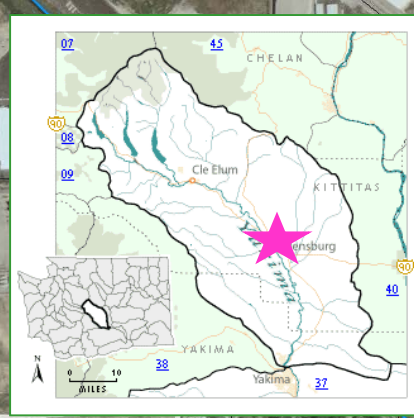
- **YTAHP – Project Development** (Carol Ready)
  - Hank Fraser, YN; Anna Lael, KCCD (~2003)
- **Ellensburg – Landowner** (John Akers)
- **MC RFEG – Management** (Rebecca Wassell)
- **WDFW – Original Design** (Gina McCoy)
- **Anchor QEA – Final Design** (Bob M)
- **G&O – Levee Design**

# Project Objectives



- **Improved Flood Management**
  - Floodplain Capacity & Function
- **Enhanced Habitat**
  - Instream & Riparian Conditions
- **Community Opportunities**
  - Recreation & Education

Dolarway Road



# Reecer Creek Location

West Ellensburg Park

I-90

REECER CREEK



# Why Reecer?

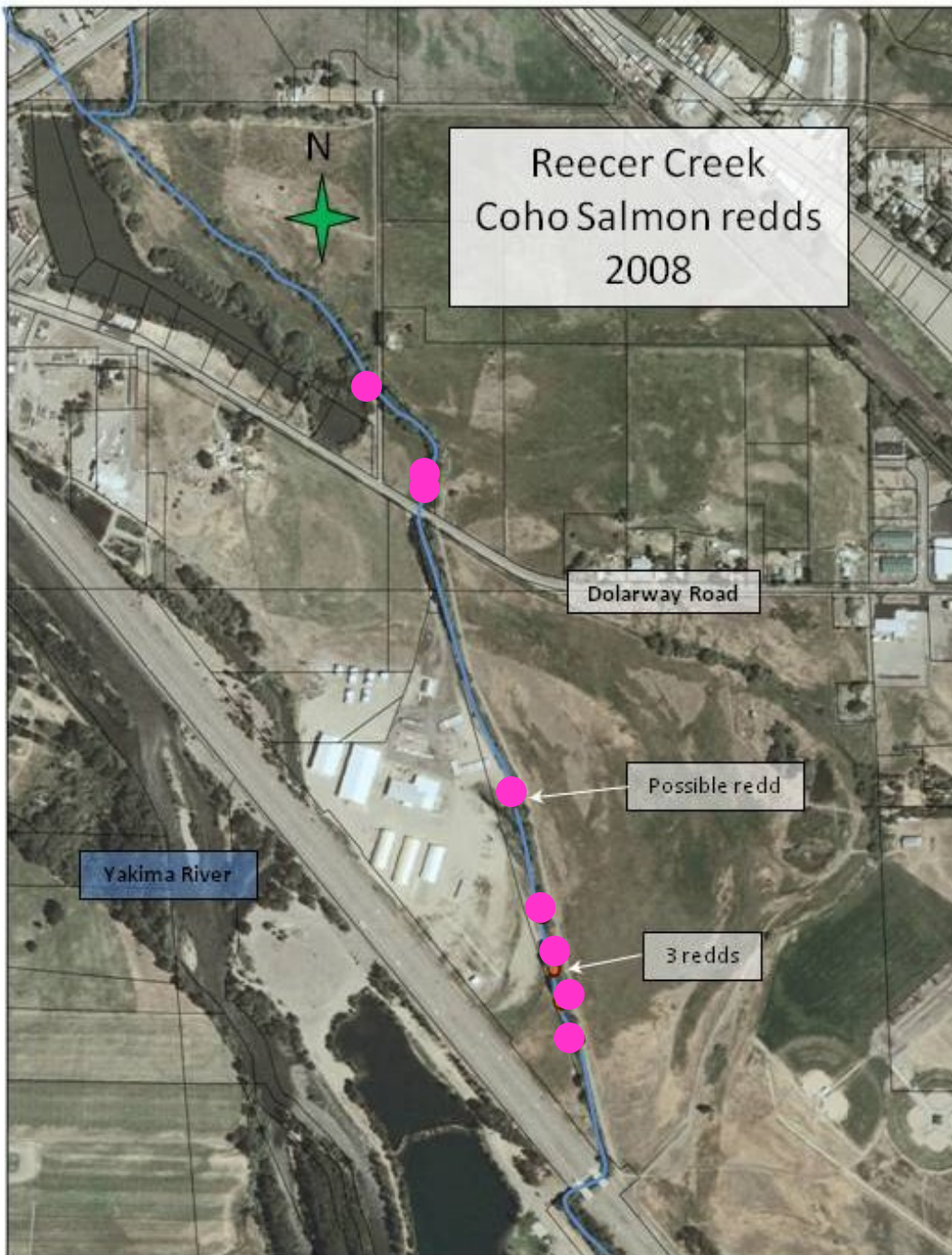
- Year-round Water
- Existing Fish Usage
- Complexity Potential
  - Less Disturbed than some
  - Opportunity to enhance
- *Building on Past Efforts...*
  - **KCCD** – Carrier siphon, pipeline
  - **KCT / YN** – barriers, riparian
  - **YN** – Coho reintroduction



# Redds

## 2008

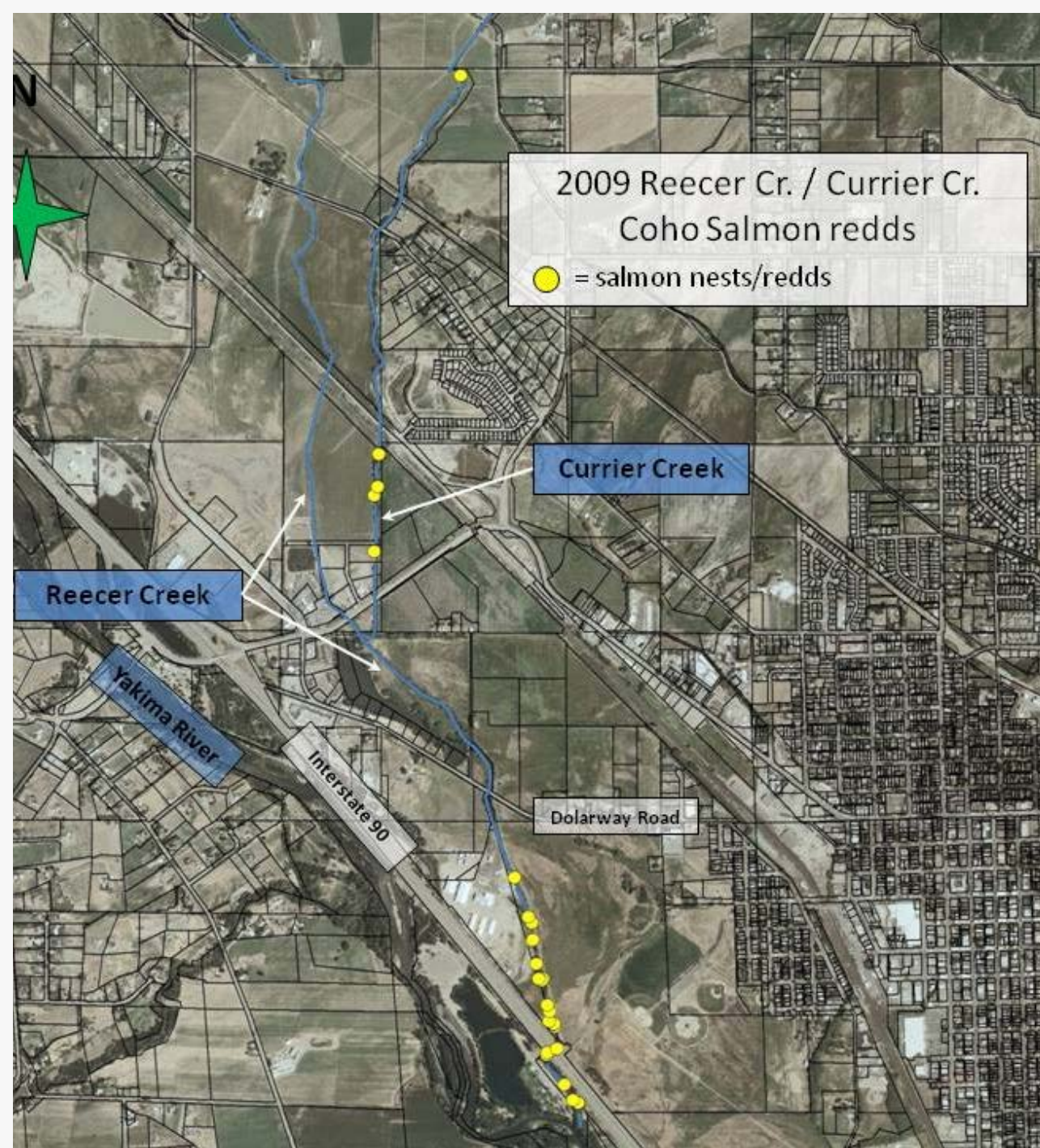
- *Coho Adults*
- *Coho Juveniles*
- *Other Species*
  
- *Fresh Water Mussels*





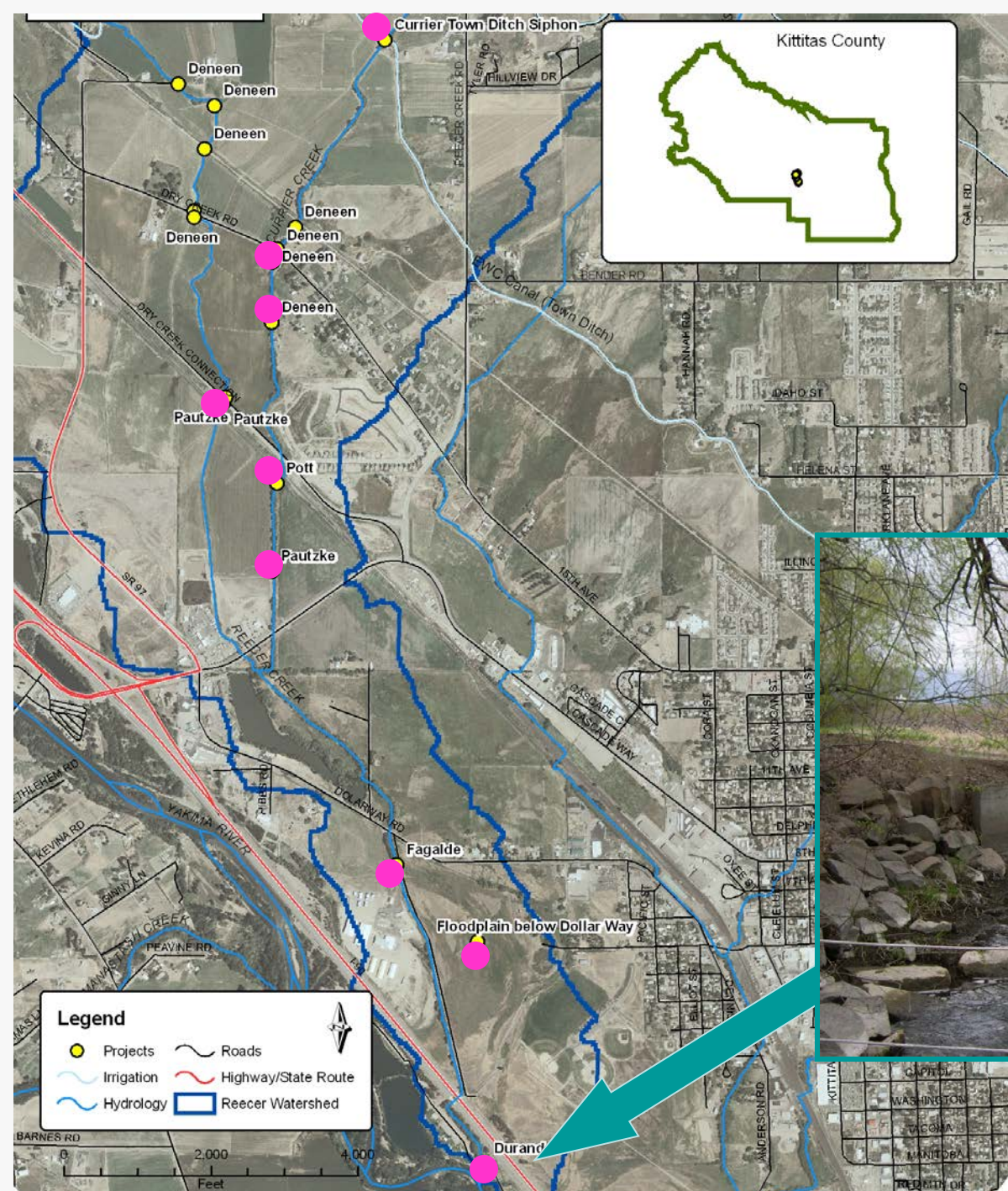
# More Redds

2009



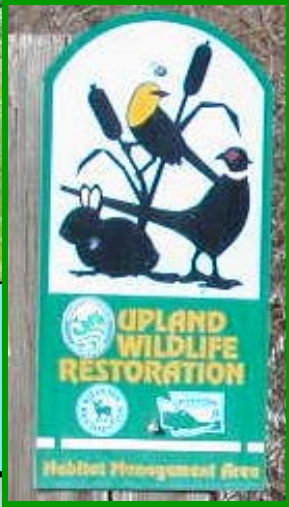


# Reecer + Carrier Creek *Past Work*





# Upstream Habitat Conditions: Reecer + Carrier







**Historic Floodplain**



**Levee**



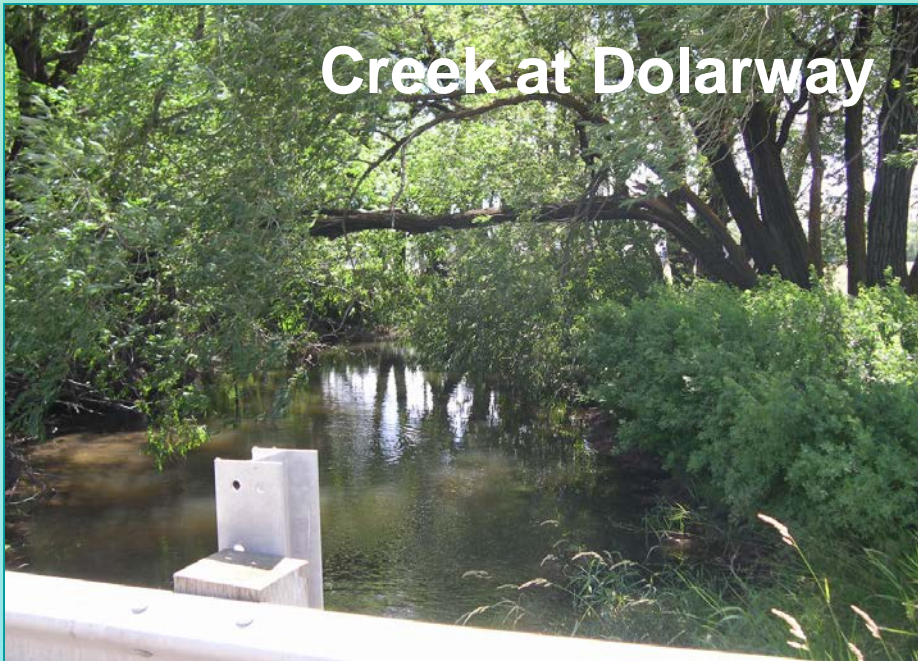
**Existing Ponds**



**I-90 Underpass**



**Creek at Dolarway**



**Below I-90**



**Confluence**



**Side Channel**







## Monitoring in Reecer/Currier








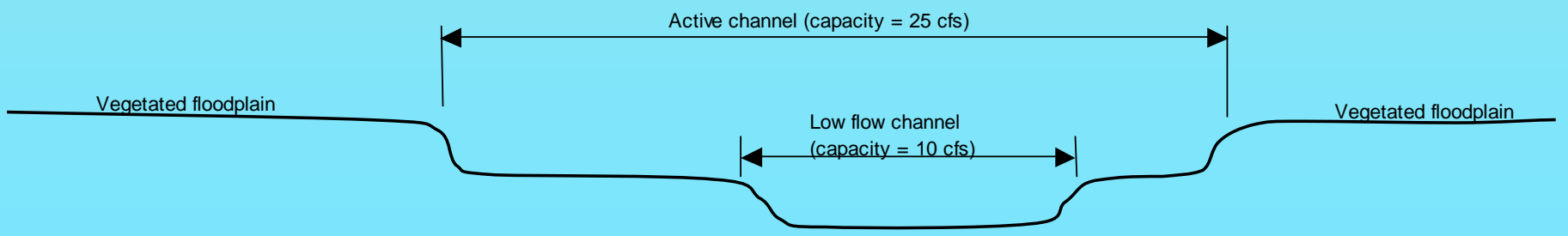
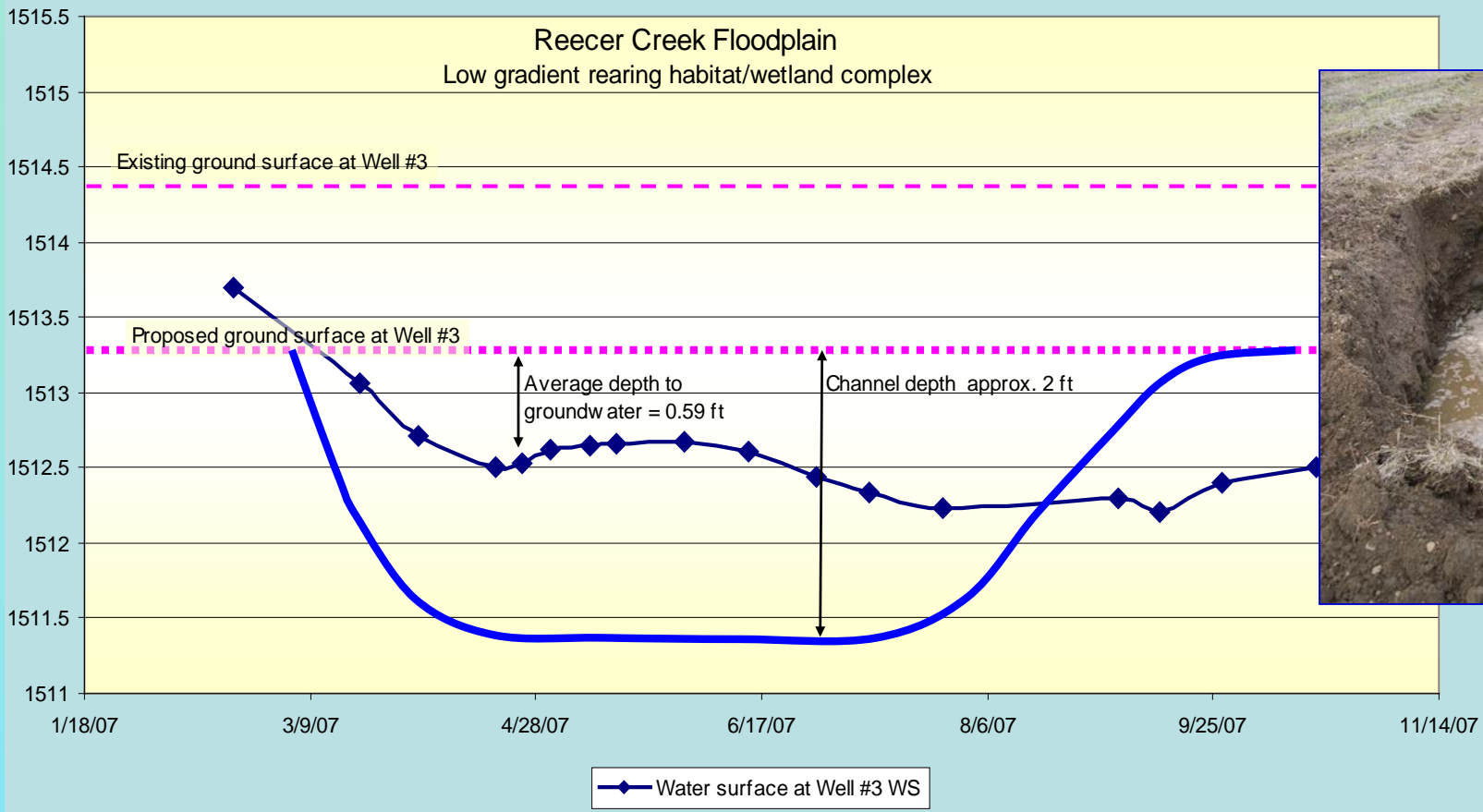




### Legend



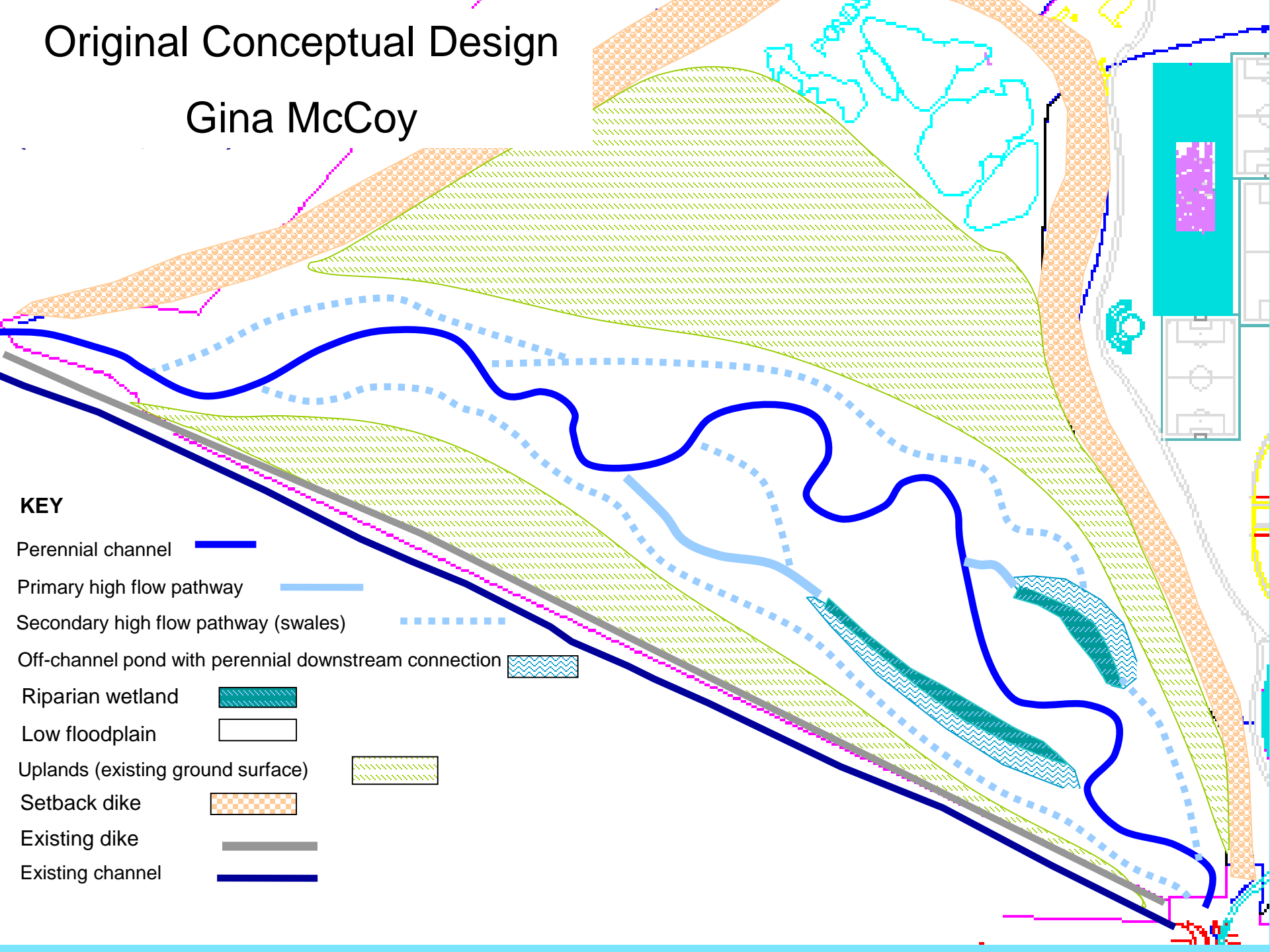
-  Roads
-  Highway/State Route
-  Irrigation
-  Hydrology
-  Cities





# Original Conceptual Design

Gina McCoy

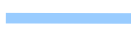


## KEY

Perennial channel



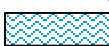
Primary high flow pathway



Secondary high flow pathway (swales)



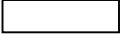
Off-channel pond with perennial downstream connection



Riparian wetland



Low floodplain



Uplands (existing ground surface)



Setback dike



Existing dike



Existing channel





# Design Objectives

- **Channels:** Main & High Flow
- **Profile:** Low to Allow Floodplain Access
- **Natural Sediment Transport:** WQ, Function
- **Bank Stability:** Revegetation
  - 2-3 Yrs of Reveg + Supplemental Irrigation
- **Roughness:** LWD, Christmas Trees
  - Instream, Riparian & Floodplain
- **Infrastructure Protection:** Setback Levee





# Schematic

**N-T-S**

**Levee  
(stylized)**

**Sinuosity  
(suggested)**



# Reecer Creek Floodplain Restoration Project



Aerial

## West Ellensburg Park & Trail Connection





# Revegetation

Near Riparian  
Far Riparian  
Upland

With Native  
Trees, Shrubs  
& Grasses

# Status

- **Monitoring:** Fish, Groundwater, Ponds
- **Designs:** Complete (habitat + levee)
- **Permits:** ~Done (*Magic by Jen*)
- **Funding:** Grants + City Commitments
  - SRFB, Ecology (WQ, Flood), YN, YN
- **Revegetation Plan:** Evolving (~\$)
- **CONSTRUCTION:** Summer 2010



# Under & Below I-90



**Recreation Access**



# Outreach & Education

## Reecer Creek Floodplain Restoration Project



Informational Kiosks



Salmon Release





# Related Activities



- **YTAHP** – Fish Monitoring, Passage, Habitat
- **YN** – Coho Reintroduction, Upstream Habitat
- **Kittitas Audubon Society** – Signage
- **‘Salmon in the Classroom’** – Fish Release
- **CWU** – Research Opportunities...
- **Trails** – John Wayne (private); Canyon (CLC)

# **Yakima Tributary Access & Habitat Program**



**Anna Lael-KCCD**

**Dave Myra-RC&D**

**Carol Ready-RC&D**

**Hank Fraser-YN**

**Mike Tobin-NYCD**

**Jen Scott-WDFW**

**David Gerth-KCT**



# Funding

- **SRFB:** \$404,000 ✓
  - **Ecology:** \$223,000 + \$80,000 ✓
  - **YN:** \$150,000 + \$56,000 ✓
  - **YTAHP:** \$XX,000
  - **MC FEG:** \$XX,000 ✓
  - **City:** In-Kind\* ✓
- 
- \$894,000