



# Washington Water Trust

Enhancing instream flows using market-based  
incentives

Since 1998

WASHINGTON  
**WATER  
TRUST**



**What we do....**

**How we do it....**

**Why water in Trust....**

**Elements to success....**

**Examples of our work....**

Washington Water Trust (WWT) works cooperatively to develop agreements that result in *improvement* to instream flows

Farmers

Tribes

“Citizen Bobs”

Ranchers



Irrigation districts

Public Agencies

Ditch Associations

**WWT** acquires *existing water rights* from *willing sellers* to use for instream benefits

### Mechanism

- gift
- lease
- purchase

Held in “Trust” (ie. Washington Trust Water Rights Program)

*RCW 90.38.040, 90.38.020, 90.42.040, 90.42.080*



These water rights are officially dedicated to *instream flows*.

# Acquisition Authority

- Trust Water Right Program [RCW 90.42 & 90.38]
  - Voluntary
  - TWR retains *priority date*
  - TWR is not subject to *relinquishment*
  - TWR cannot impair other legal uses
  - TWR is held by Ecology
  - Tentative determination on transferred portion only
- Expedited Process to Transfer Right to TWRP [RCW WAC 173-152-050 (2b) & (3a)]

# Water acquisition as a mechanism

\*Instream flow



= 1 piece of the fish-river  
restoration puzzle

\*Water acquisition



= 1 of multiple mechanisms

\*WWT role

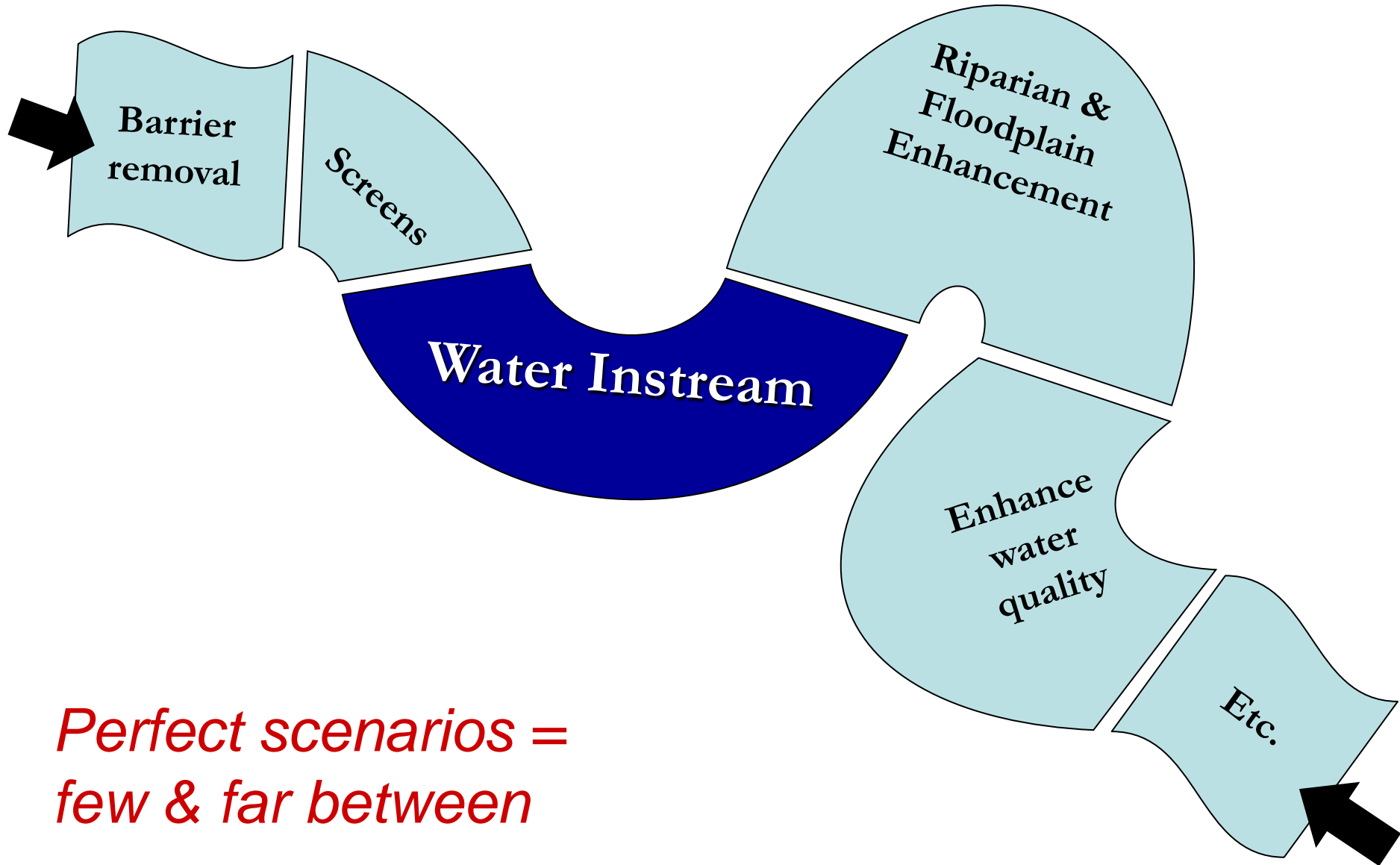


= project development  
= creating safe harbor  
= due diligence  
= negotiation & transfer to Trust

# Key Elements of Water Market Solution

- *Strive for fair-market value*
- *Incentive-based*
- *Non-regulatory*
- *Transferable water rights*
- *Yakima SubBasin Plan*
- *WA H2O Acquisition Program*
- *Know the market – the water, the people*
- *Creativity, patience, and strategy*

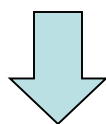
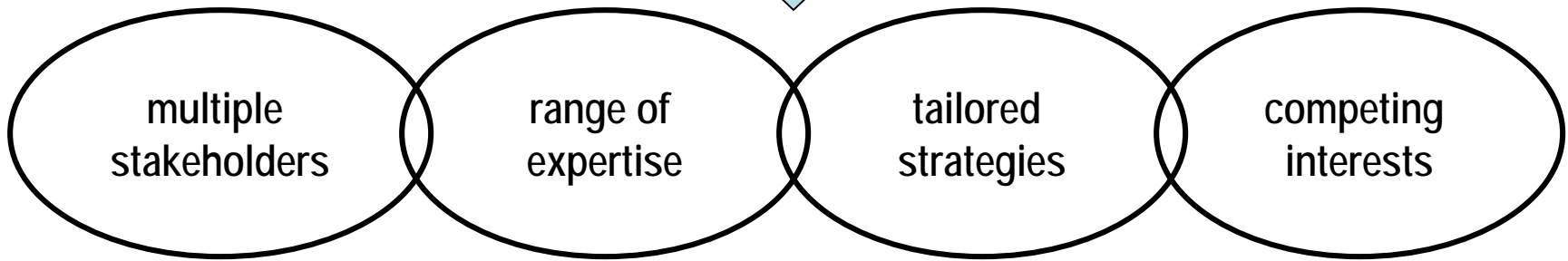
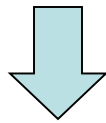
# Instream Flow: Tributaries



*Perfect scenarios =  
few & far between*



# WWT Strategy



★ ★ ★ *Creating opportunities* ★ ★ ★

# Salmon Creek

- Water Lease Program with irrigation district
- Largest producer of salmon and steelhead in Okanogan
- Partners:
  - Colville Tribe,
  - Okanogan Irrigation District
- Funders:
  - Bonneville Power Administration,
  - Department of Ecology
- *Temporary* solution

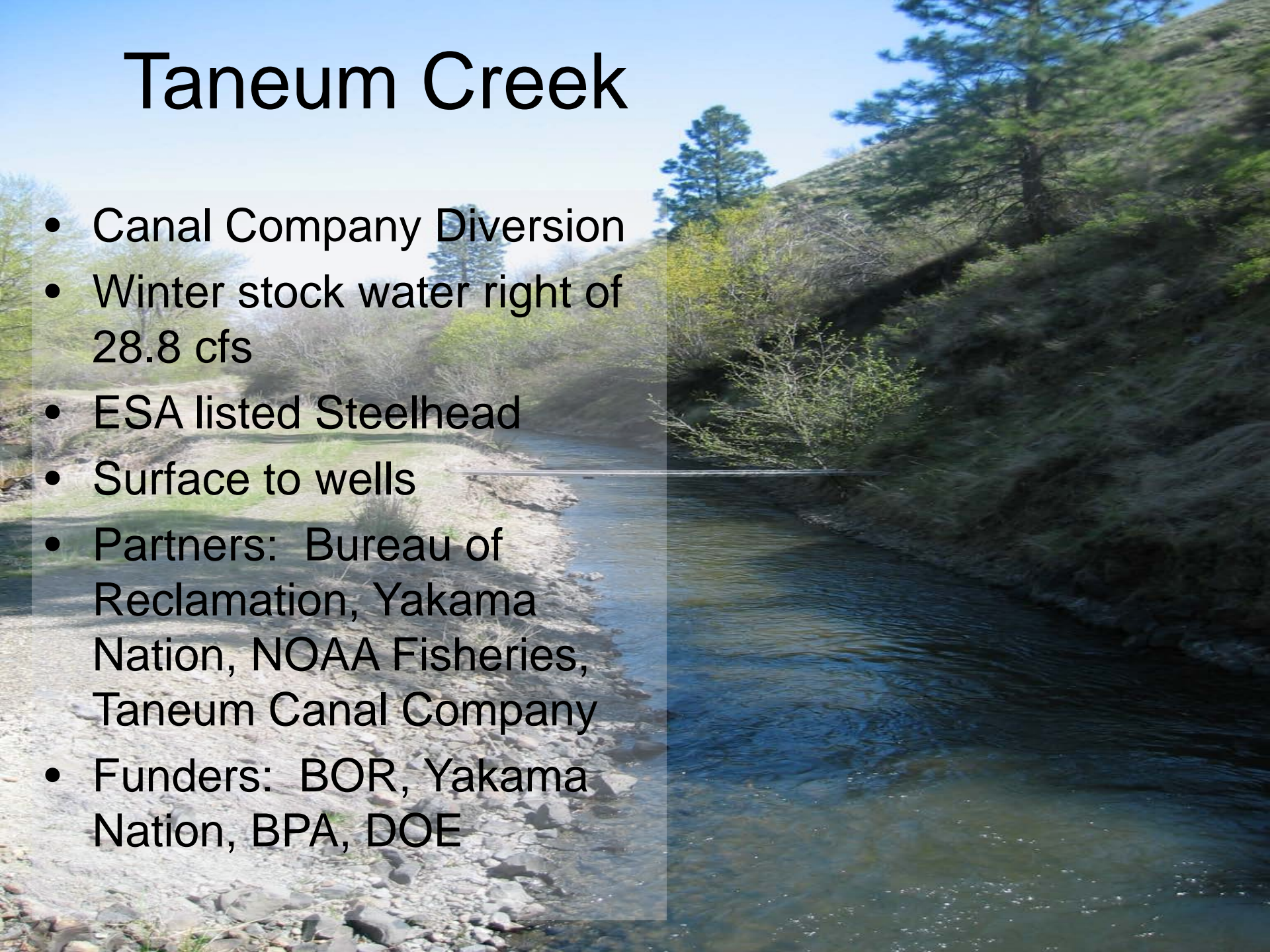


# Naches River

- Joint water and land deal
- Species include ESA listed:
  - steelhead,
  - Coho,
  - Spring Chinook
- Partners:
  - Yakama Indian Nation,
  - Dept of Fish and Wildlife
- Funders:
  - BPA,
  - DOE,
  - Salmon Recovery Funding Board
- Land restoration

# Taneum Creek

- Canal Company Diversion
- Winter stock water right of 28.8 cfs
- ESA listed Steelhead
- Surface to wells
- Partners: Bureau of Reclamation, Yakama Nation, NOAA Fisheries, Taneum Canal Company
- Funders: BOR, Yakama Nation, BPA, DOE



# Scenarios to consider

- Conveyance losses / burdensome delivery
- Working towards compliance
- Riparian planting / buffer
- Privately paid irrigation efficiency
- Interest of landowner/water right holder
- Undecided on future of water use
- Timing of water delivery



# Final key elements

- Every water acquisition
  - the opportunity, the parameters, the price –  
*is different*
- Relationships & connections leverage instream results
- Water is not created equal
- The nature of the beast *necessitates* collaboration



*Thank You*

**Kelly McCaffrey**

**[www.thewatertrust.org](http://www.thewatertrust.org)**

**[kelly@thewatertrust.org](mailto:kelly@thewatertrust.org)**

**206-675-1585 x103**