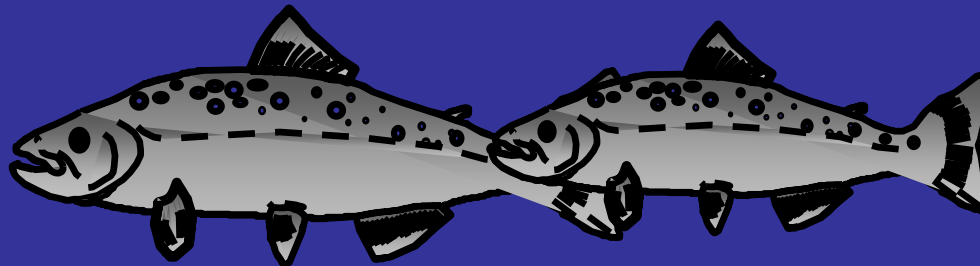


Beavers and Large Wood Replenishment

Doing Two Things at Once

Scott Nicolai, Yakama Nation YKFP
William Meyer, WDFW

Yakima Basin Science & Mgmt Conf 2011




The historical context...



Log Drive Teanaway River

Photo Courtesy of Boise Cascade



...has lead to this
(where are the pools,
instream cover,
instream
complexity??).

08.29.2007 23:24

Large Wood Replenishment:

- Position large wood in the stream channel and adjacent floodplain



11.07.2008 12:22

One Approach: Trees are thinned, and moved to the stream with griphoists (aka "a come-along on steroids")



04.13.2009 08:47

Source-wood is selectively removed from upland areas



07.22.2008 14:58

Another
benefit:
Forest Stand
Improvements



10.02.2008 11:13

Approach #2: Purchase trees with rootwads, and haul them from another location



09.09.2010 07:38



09.08.2010 11:06

Note - approach #2 is expensive.



09.13.2010 11:22

A third approach: Trees are harvested with machinery from nearby, overstocked stands (*less expensive*)



09.10.2010 15:20

Trees are then moved,
sorted and racked by
stream hydraulics

05.16.2008 10:45

But lets see what
happened in May!

Near the flood Peak
(est. 2500 cfs)



05.15.2011 14:12

After...

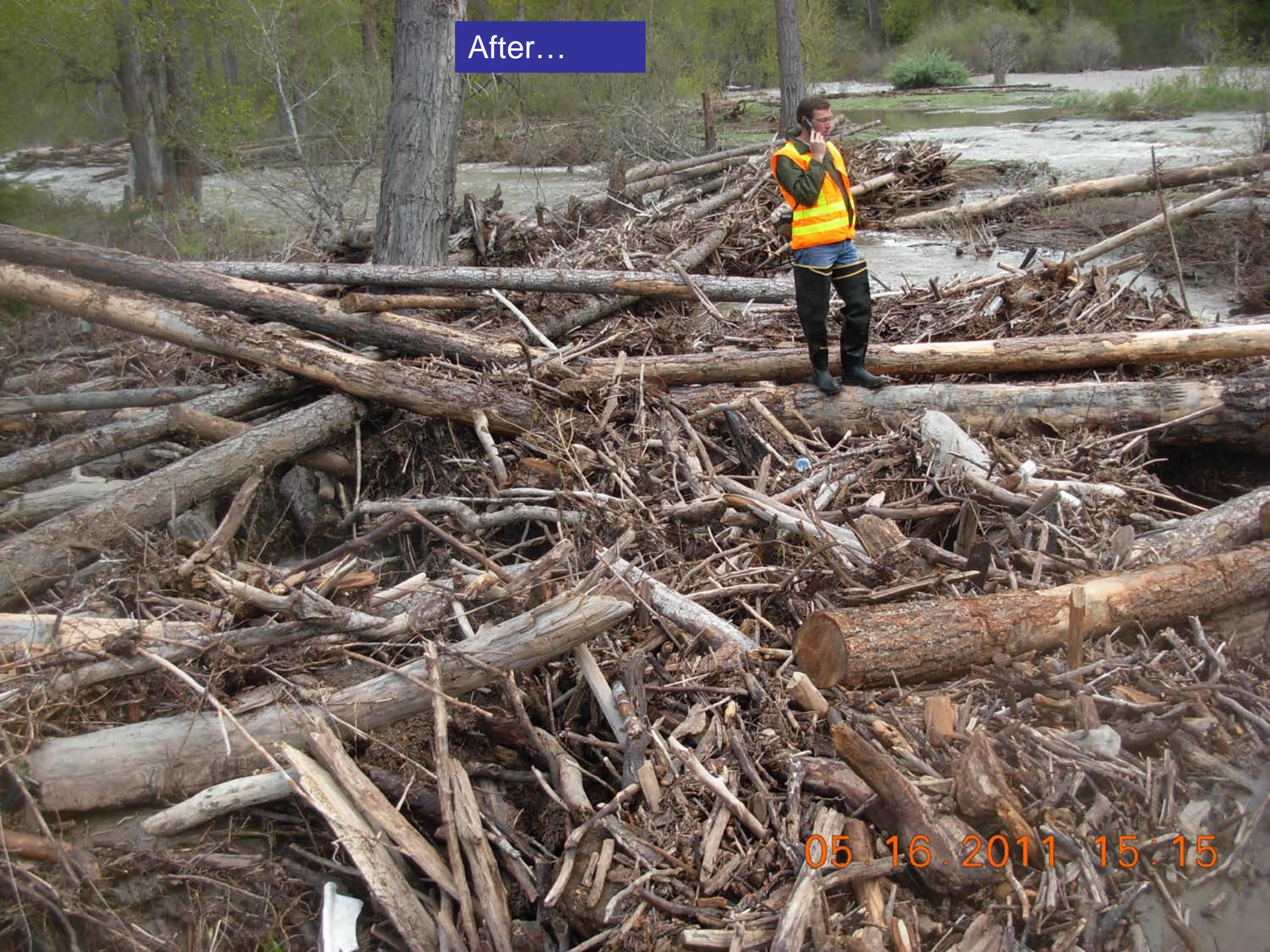


During construction...



09.14.2010 14:39

After...



05.16.2011 15:15



05.16.2011 15:17

Next: Beavers!

Beavers like wood



See ???

