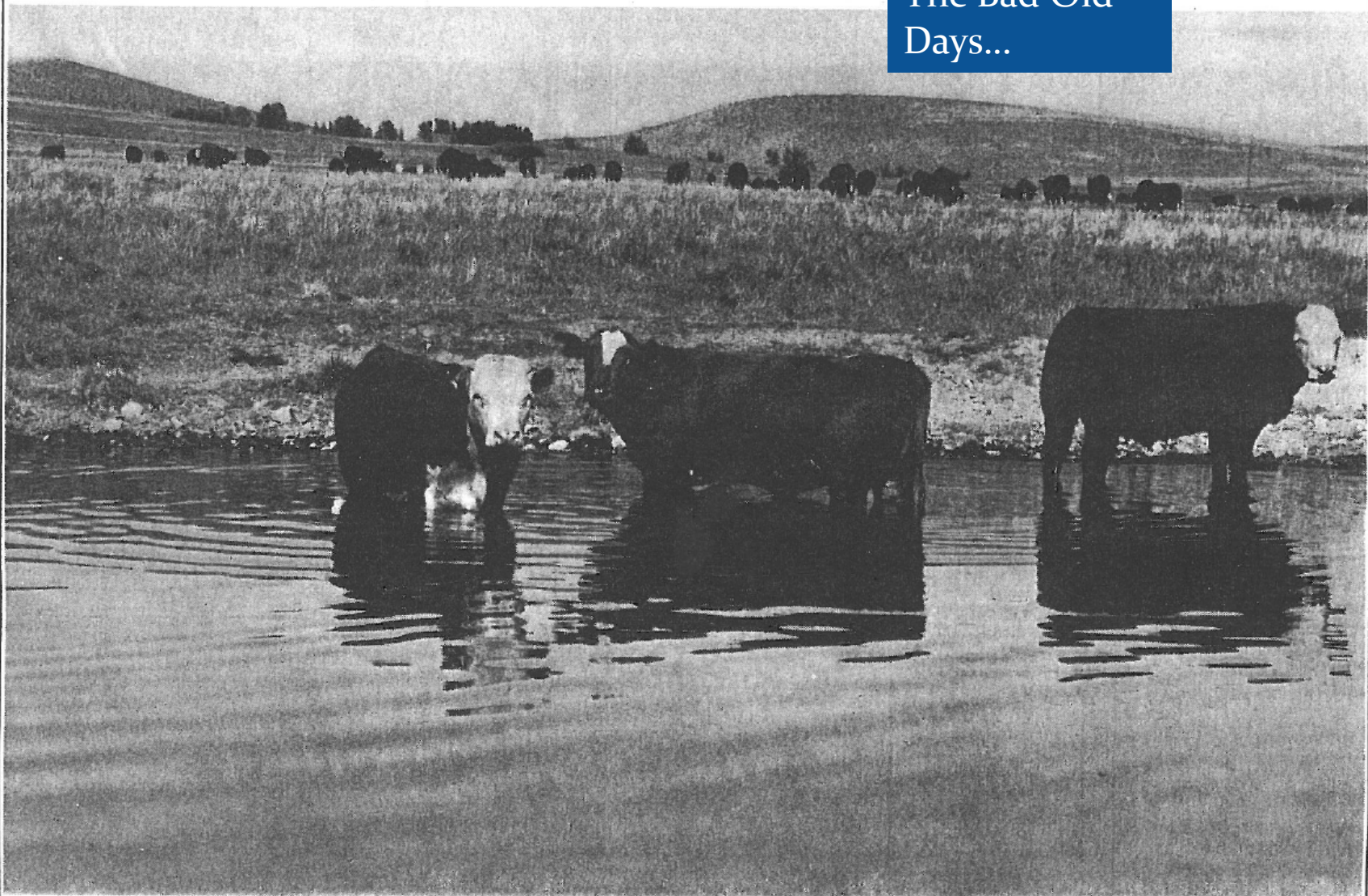


# YKFP Habitat Activities

6/21/94

# Fostering memories

The Bad Old Days...

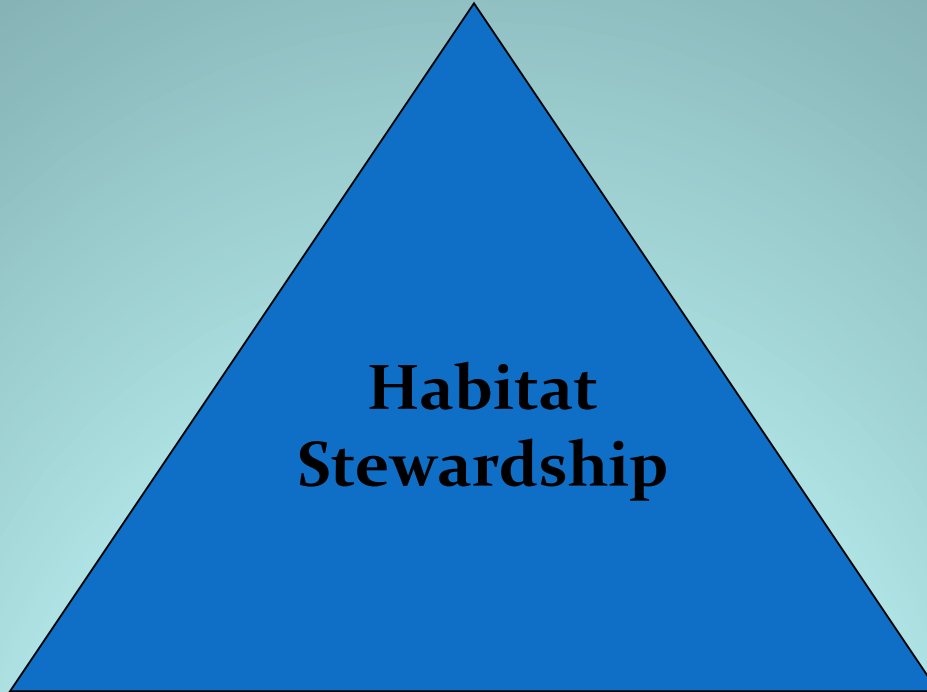


**What fish?** We hear an occasional frog in here, but no fish. Back in the early 1970s we had lots of snow most winters so the Kittitas Valley cows had no problem keeping their milk cool during the hot summer months. When we start listening to all those fish stories down Yakima way we will pay for it with a bunch of sour milk here in our valley. (There is an entire ocean for the fish so don't mess with our contented cows. (Photo and text by John Foster)



**Habitat  
Stewardship**

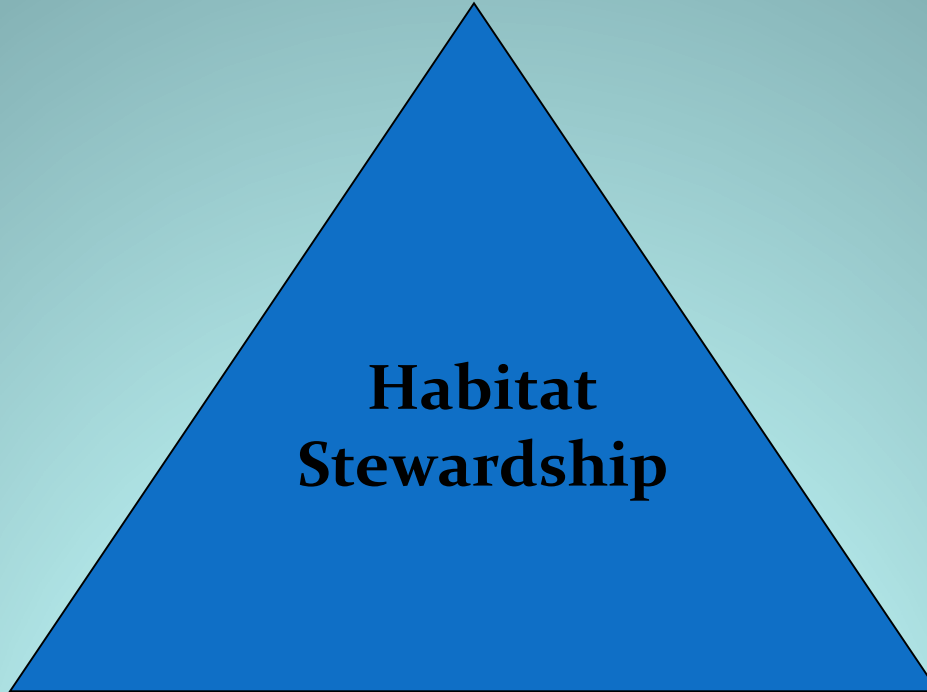
**Strategic,  
Priority  
Actions**



**Habitat  
Stewardship**



**Strategic,  
Priority  
Actions**



**Habitat  
Stewardship**

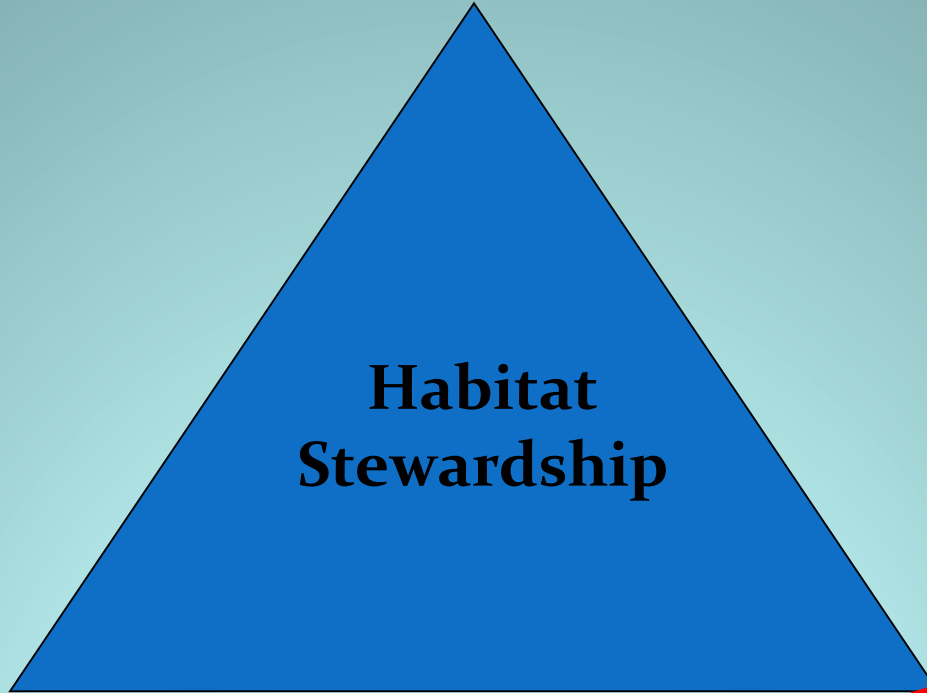
**Opportunity**

**Strategic,  
Priority  
Actions**

**Habitat  
Stewardship**

**Opportunity**

**Capacity**



# YKFP Habitat Activities

**From the Record Book:**

# YKFP Habitat Activities

**Work Element D:**

**YKFP Habitat, Water and Passage Technical  
Review Activities**



# YKFP Habitat Activities

**Work Element G:**

**Identify and seek funding for cost-share; Enter Cost-share Data in PISCES**

# YKFP Habitat Activities

## Work Element G:

Identify and seek funding for cost-share; Enter Cost-share Data in PISCES

- Department of Ecology

# YKFP Habitat Activities

## Work Element G:

Identify and seek funding for cost-share; Enter Cost-share Data in PISCES

- Department of Ecology
- Washington State RCO – Salmon Recovery Funds

# YKFP Habitat Activities

## Work Element G:

Identify and seek funding for cost-share; Enter Cost-share Data in PISCES

- Department of Ecology
- Washington State RCO – Salmon Recovery Funds
- USFWS



# YKFP Habitat Activities

## Work Element G:

Identify and seek funding for cost-share; Enter Cost-share Data in PISCES

- Department of Ecology
- Washington State RCO – Salmon Recovery Funds
- USFWS
- Wasco PUD

# YKFP Habitat Activities

**Work Element O:**

**Manage Habitat Parcels**





08.04.2011 11:50





07.27.2011 11:36





01.12.2012 16:56





04.24.2012 13:16



# YKFP Habitat Activities

**Work Element Q:**

**Place Large Wood in the Yakima Watershed**

















# YKFP Habitat Activities

**Work Element R:**

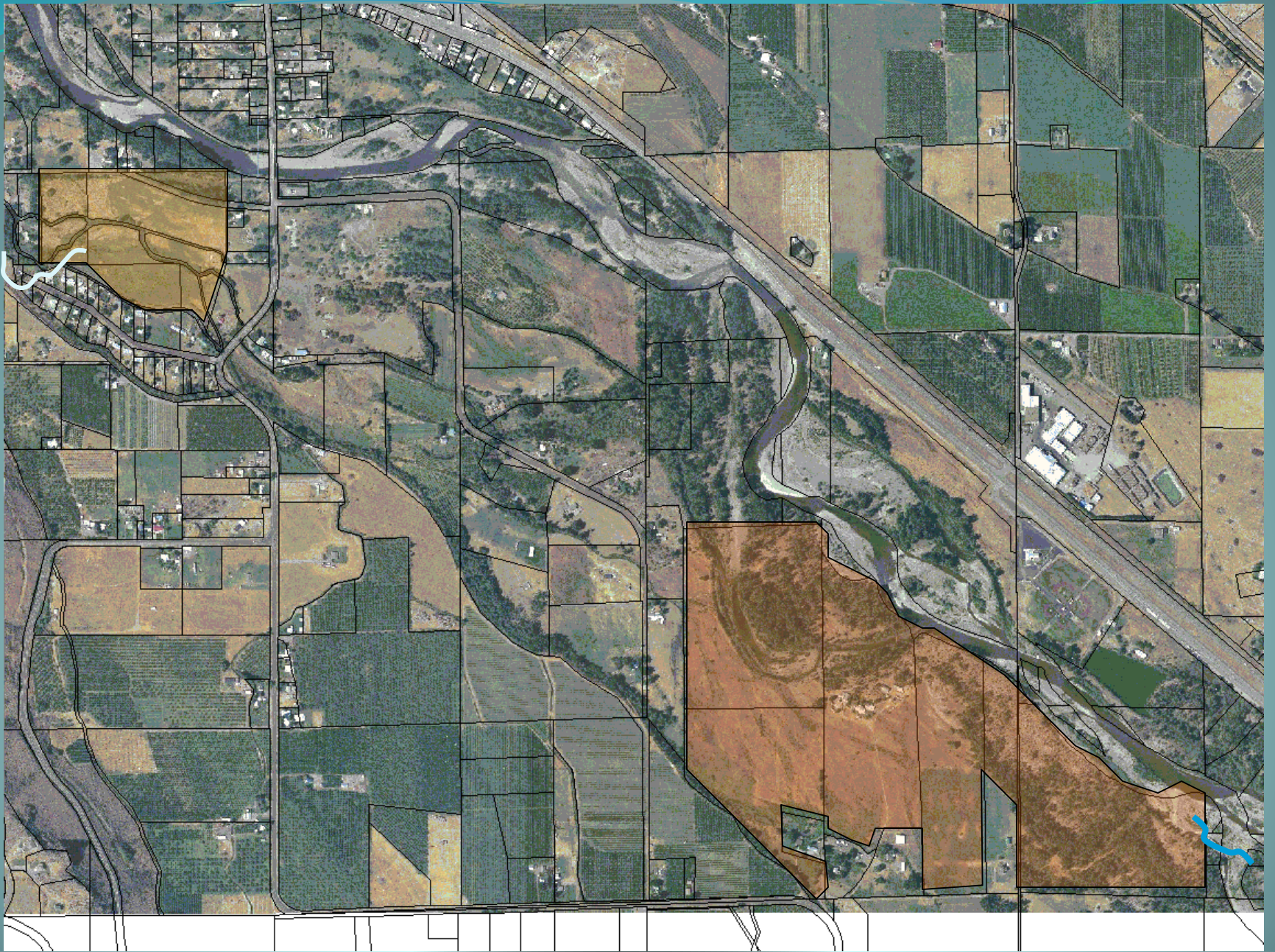
**Remove vegetation at the Fortune habitat property**

# YKFP Habitat Activities

**Work Element T:**

**Remove vegetation at the Harris habitat property**







# YKFP Habitat Activities

**Work Element U:**

**Remove vegetation at the Holmes habitat property**

# YKFP Habitat Activities

**Work Element V:**

**Remove vegetation at the Pott Road property**

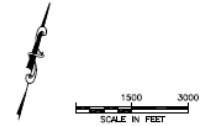
# YKFP Habitat Activities

**Work Element AB:**

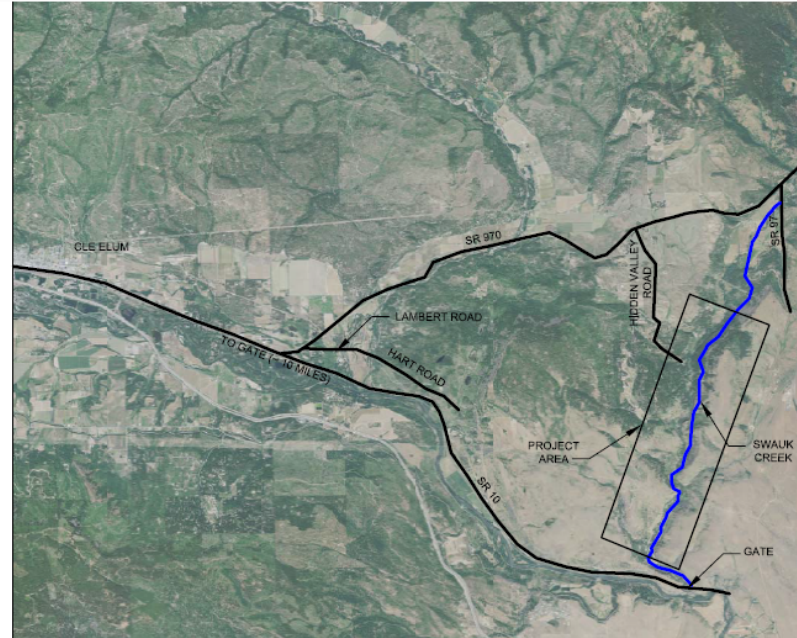
**Lower Swauk Restoration**

# YAKAMA NATION SWALK CREEK RESTORATION PROJECT

YAKAMA NATION, KITTITAS COUNTY, WASHINGTON



**VICINITY MAP**  
NTS.



**PROJECT LOCATION MAP**  
SCALE: 1" = 2000'

**SHEET INDEX:**

TITLE	SHEET NO.
TITLE SHEET	T1
GENERAL NOTES	G1
ACCESS AND KEY MAP	P1
ACCESS AND STAGING	P2 - P4
PLAN SHEETS	P5 - P11
STEP POOL : PLAN SECTION AND DETAIL	D1
ELJ : PLAN, SECTION AND DETAIL	D2
WATER MANAGEMENT DETAILS	D3
LARGE WOODY MATERIAL REPLENISHMENT DETAIL	D4
MISCELLANEOUS DETAILS	D5
BRIDGE PROTECTION PLAN	B1
BRIDGE PROTECTION SECTION AND DETAIL	B2

**60% SUBMITTAL  
NOT FOR CONSTRUCTION**

PROJECT LOCATION: Swalk Creek, Washington  
 CLIENT AGENCY: Yakama Nation  
 DESIGN CONSULTANT: Cardno ENTRIX  
 ENGINEER OF RECORD: Jack Bjork, P.E., D.WRE.  
 GEOMORPHOLOGIST: Tim Abbe, PH.D., P.E.G., P.H.G.  
 PROJECT ENGINEER: George Fowler, E.I.T.

Board: YAKAMA NATION  
 Staff:

DATE	
REVISIONS	



**TITLE SHEET**  
 SWALK CREEK RESTORATION PROJECT  
 YAKAMA NATION  
 KITTITAS COUNTY, WASHINGTON

DATE	3/20/11
DESIGNED BY:	G. FOWLER
DRAWN BY:	T. HAGLE
CHECKED BY:	T. ABBE / J. BJORK
SCALE:	AS NOTED
ENTRIX JOB NO.	42294002
FIGURE NO.	<b>T1</b>
SHEET	1 of 20

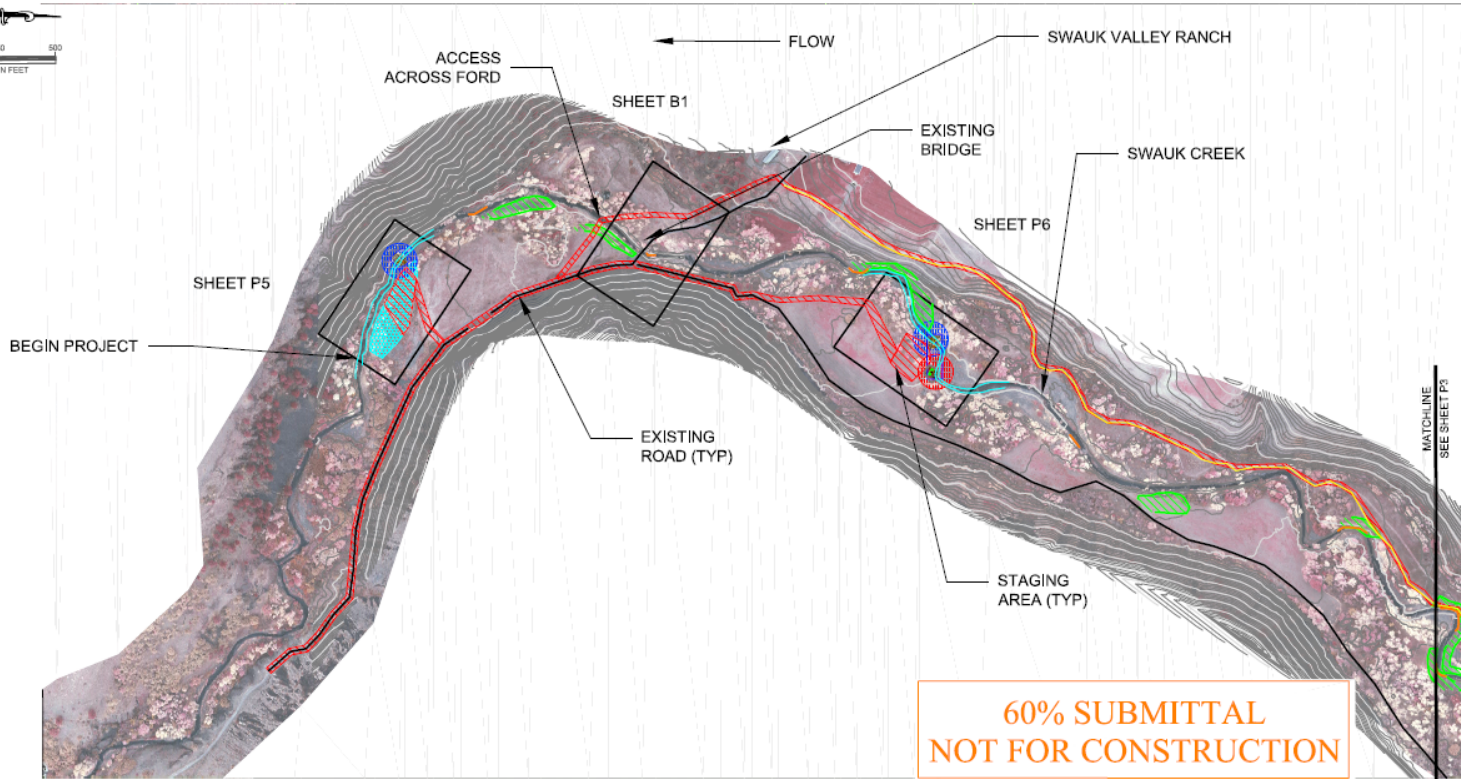
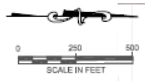


**NOTES:**

1. ACCESS TO CONSTRUCTION SITES IN P2 IS FROM SR10.
2. EQUIPMENT CAN NOT ENTER ACTIVE FLOW AREA AT FORD, ACTIVE FLOW AREA IS DEFINED AS FOUR FEET ABOVE CHANNEL BED. A CENTER PIER CAN BE CONSTRUCTED FROM LOGS, ECOLOGY BLOCKS OR CLEAN QUARRY SPALLS. THE BASE OF THE PIER CAN NOT EXCEED 7' IN WIDTH. BANK GRADING CAN OCCUR ABOVE ACTIVE FLOW AREA.
3. ALL ACCESS ROADS WILL BE FLAGGED BY CONTRACTOR AND WILL NOT EXCEED 15' WIDTH.
4. BOUNDARIES OF STAGING AREAS TO BE MARKED BY CONTRACTOR AND APPROVED BY ENGINEER OR INSPECTOR.
5. ALL CLEARING MUST BE CONTAINED WITHIN STAGING OR ACCESS AREAS, NO GRUBBING WILL OCCUR WITHIN 25' OF CREEK EDGE OF WATER.
6. ALL CLEARING AREAS WILL BE RESTORED.
7. BOUNDARIES OF LARGE WOODY MATERIAL REPLENISHMENT AREAS WILL BE DELINEATED BY ENGINEER OR INSPECTOR.
8. ALL WORK AREAS MUST BE ISOLATED FROM WATER AND ANY GROUND WATER MUST BE PUMPED TO AN APPROVED UPLAND SITE.

**LEGEND**

	ENGINEERED LOG JAM		LWM REPLENISHMENT AREA
	STEP POOL STRUCTURE		REVEGETATION AREA
	CLASS V ROAD		CONTOUR 5'
	RECREATION TRAIL		ACCESS AND STAGING AREA



**60% SUBMITTAL  
NOT FOR CONSTRUCTION**

T:\CAD\Projects\42294\002\_Swauk\_Creek\_Restoration - Phase II\Sheets\P2-P4\_Access&Staging.dwg, 3/25/2011 3:02:26 PM

DATE	
REVISIONS	

**Cardno ENTRIX**  
200 First Avenue West, Suite 500  
Shore, WA 98151  
WWW.ENTRIX.COM

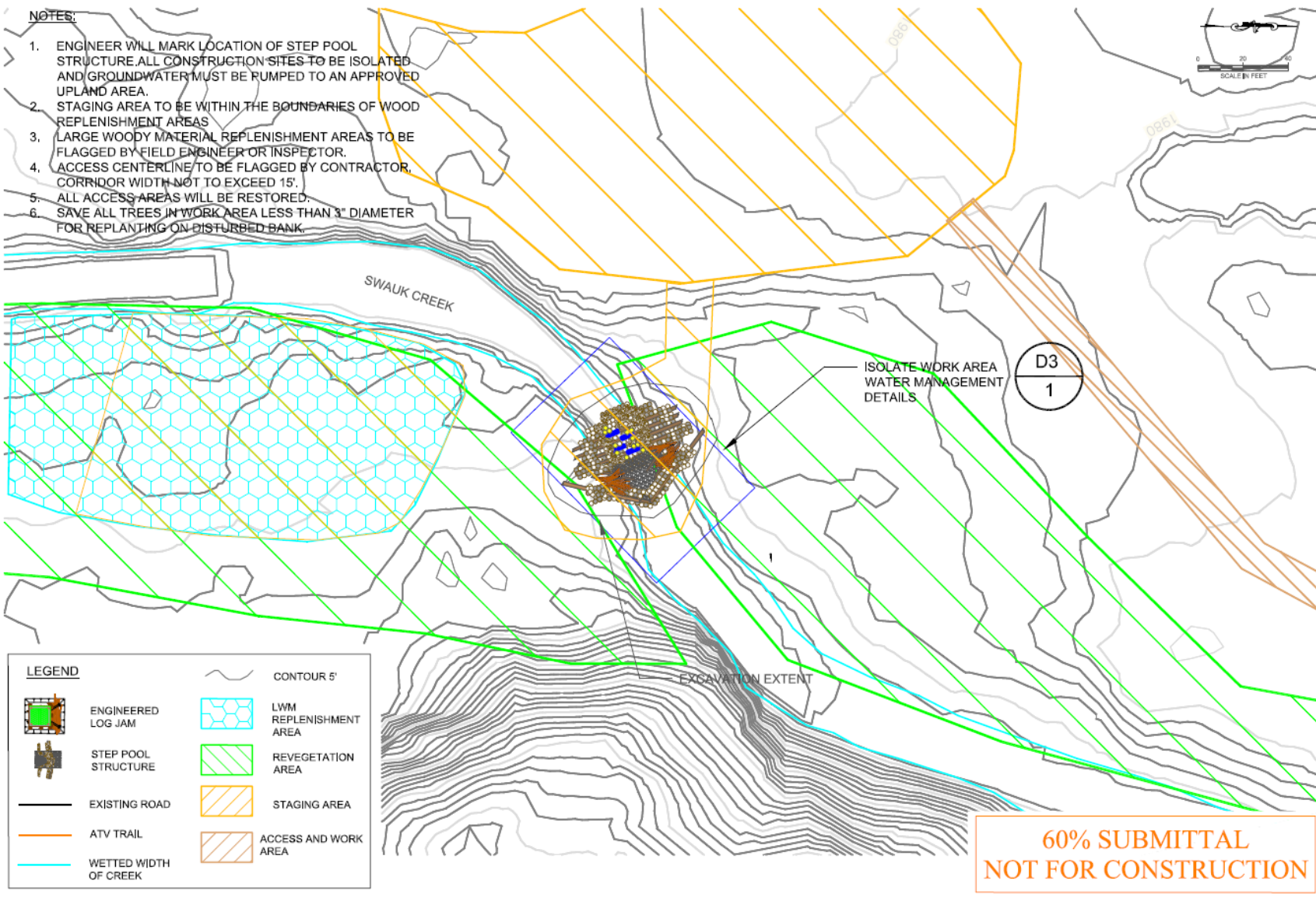
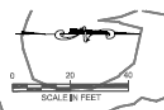


**ACCESS AND STAGING**  
SWAUK CREEK RESTORATION PROJECT  
YAKAMA NATION  
KITITITAS COUNTY, WASHINGTON

DATE	2/20/11
DESIGNED BY:	G. FOWLER
DRAWN BY:	T. HAGLER
CHECKED BY:	T. HAGLER / J. BJORK
SCALE:	1"=50'
ENTRIX JOB NO.	42294002
FIGURE NO.	
<b>P2</b>	
SHEET	4 of 20

**NOTES:**

1. ENGINEER WILL MARK LOCATION OF STEP POOL STRUCTURE. ALL CONSTRUCTION SITES TO BE ISOLATED AND GROUNDWATER MUST BE RUMPED TO AN APPROVED UPLAND AREA.
2. STAGING AREA TO BE WITHIN THE BOUNDARIES OF WOOD REPLENISHMENT AREAS
3. LARGE WOODY MATERIAL REPLENISHMENT AREAS TO BE FLAGGED BY FIELD ENGINEER OR INSPECTOR.
4. ACCESS CENTERLINE TO BE FLAGGED BY CONTRACTOR. CORRIDOR WIDTH NOT TO EXCEED 15'.
5. ALL ACCESS AREAS WILL BE RESTORED.
6. SAVE ALL TREES IN WORK AREA LESS THAN 3" DIAMETER FOR REPLANTING ON DISTURBED BANK.



LEGEND	
	ENGINEERED LOG JAM
	STEP POOL STRUCTURE
	EXISTING ROAD
	ATV TRAIL
	WETTED WIDTH OF CREEK
	CONTOUR 5'
	LWM REPLENISHMENT AREA
	REVEGETATION AREA
	STAGING AREA
	ACCESS AND WORK AREA

**60% SUBMITTAL  
NOT FOR CONSTRUCTION**

DATE	
REVISION	

**Cardno  
ENTRIX**  
205 First Avenue West, Suite 500  
Seattle, WA 98116  
WWW.ENTRIX.COM



**PLAN**  
SWAUK CREEK RESTORATION PROJECT  
YAKAMA NATION  
KITITITAS COUNTY, WASHINGTON

DATE: 3/20/11  
DESIGNED BY: G. FOWLER  
DRAWN BY: T. NAGLE  
CHECKED BY: T. ASBE / J. BJORCK  
SCALE: 1"=40'  
ENTRIX JOB NO.: 42294032  
**P11**  
SHEET 13 of 20

T:\CAD\Projects\42294032\_Swauk Creek Restoration - Phase II\Sheets\P11\_Plan\_Sheets.dwg, 3/28/2011 4:29:55 PM





09.10.2010 09:19



# YKFP Habitat Activities

**Work Element AF:**

**Conduct Pre-Acquisition Activities**





**Newly Priced**

**FOR SALE**

76 +/- ACRES • ZONED - CG

GREG LAYCOCK  
JANE LANFORD

**206-388-3000**

**Grubb & Ellis.**  
Property Solutions Worldwide

**Grubb & Ellis.**  
**306-388-3000**  
JANE LANFORD  
GREG LAYCOCK  
76 +/- ACRES • ZONED - CG

# Collaborative Partnership:

Yakama Nation - YKFP

Bonneville Power Administration

Kittitas Conservation Trust

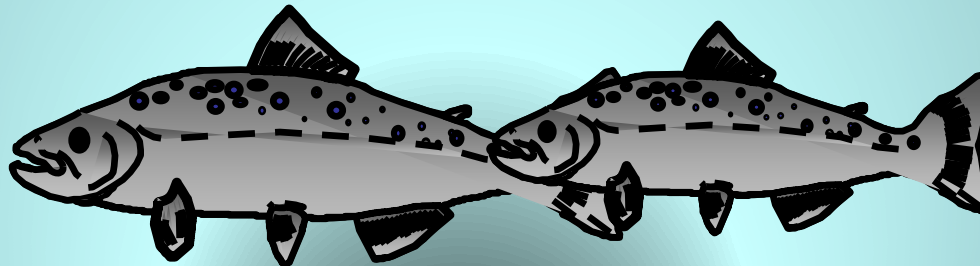
Washington Department of Fish and Wildlife

Conservation Districts

Forterra – formerly Cascade Land Conservancy

The Nature Conservancy

County and City Governments











Copyright (C) 2008 Yakima County



# Next Acquisitions...







LOT 1

0 98 196 392 588 784 Feet







3392 ft

Pointer 47°05'07.62" N 120°45'02.90" W elev 1901 ft

© 2007 Navteq  
Image © 2007 TerraMetrics  
Image © 2007 DigitalGlobe

Streaming [|||||] 100%

© 2007 Google

Eye alt 15239 ft





WA State Parks

BPA

01

06

05

36

31

32

0 208 416 832 1249 1664 ft



Option 1 - 500 yr floodplain

Option 2 - 100 yr floodplain

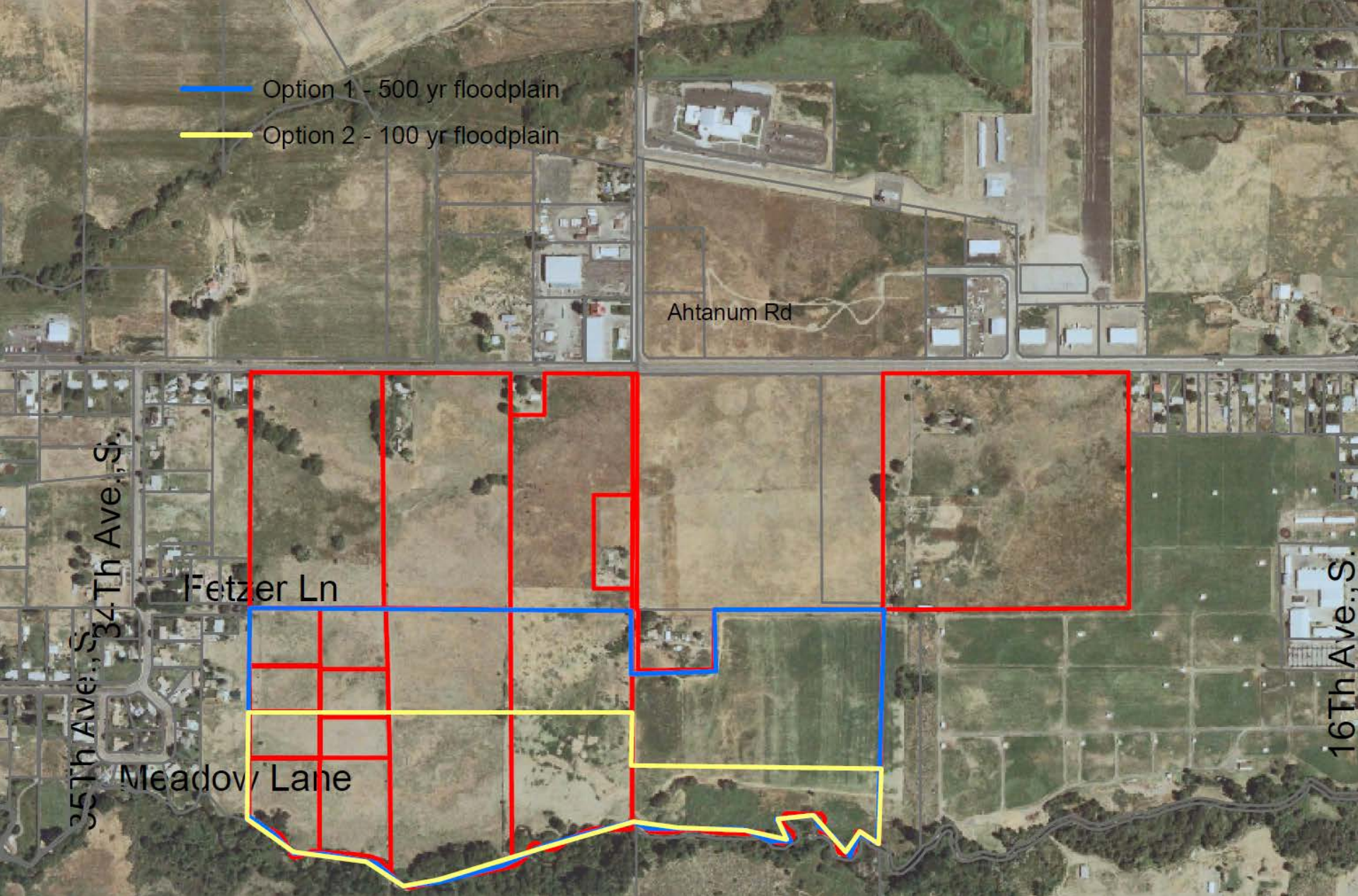
Ahtanum Rd

Fetzer Ln

Meadow Lane

35th Ave., S.  
34th Ave., S.

16th Ave., S.





# YKFP Habitat Activities

**Work Element AG:**

**Restore stream channel – Lower Reecer Creek**







11.09.2011 12:08

# YKFP Habitat Activities

**Work Element AH:**

**Fish Passage Design – Brain Ranch**





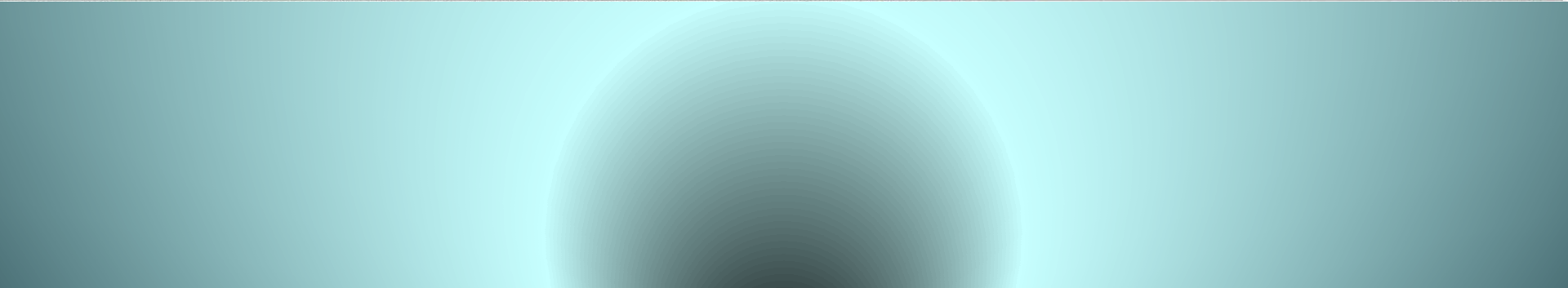




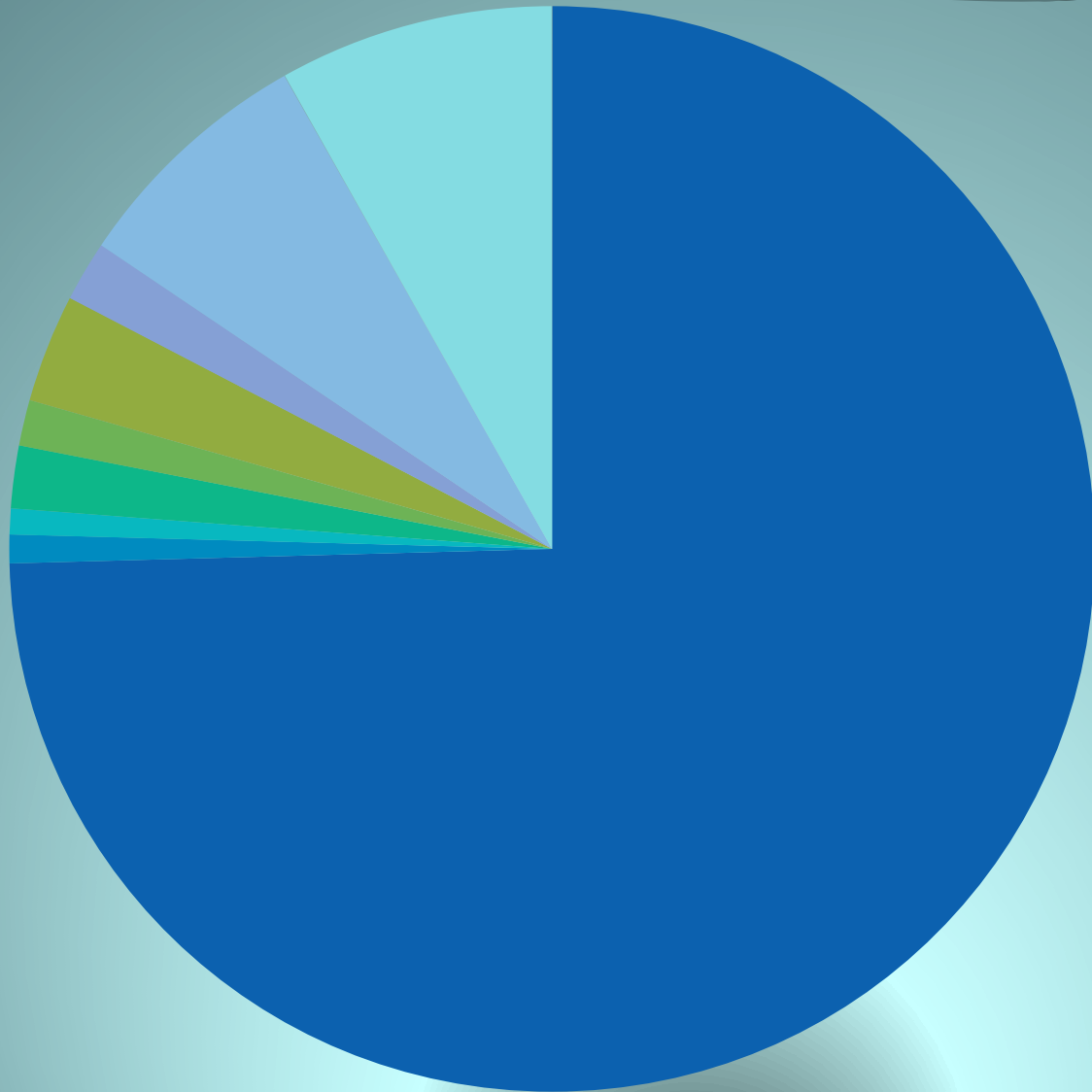












- Proposed Project
- Heinz
- Fain
- carpenter
- Dlouhy
- Nourse
- T Knudson
- T Knudson
- Heart K Land Trust



# YKFP Habitat Activities

**Work Element A1:**

**CESRF Reach Edge Habitat Enhancement**



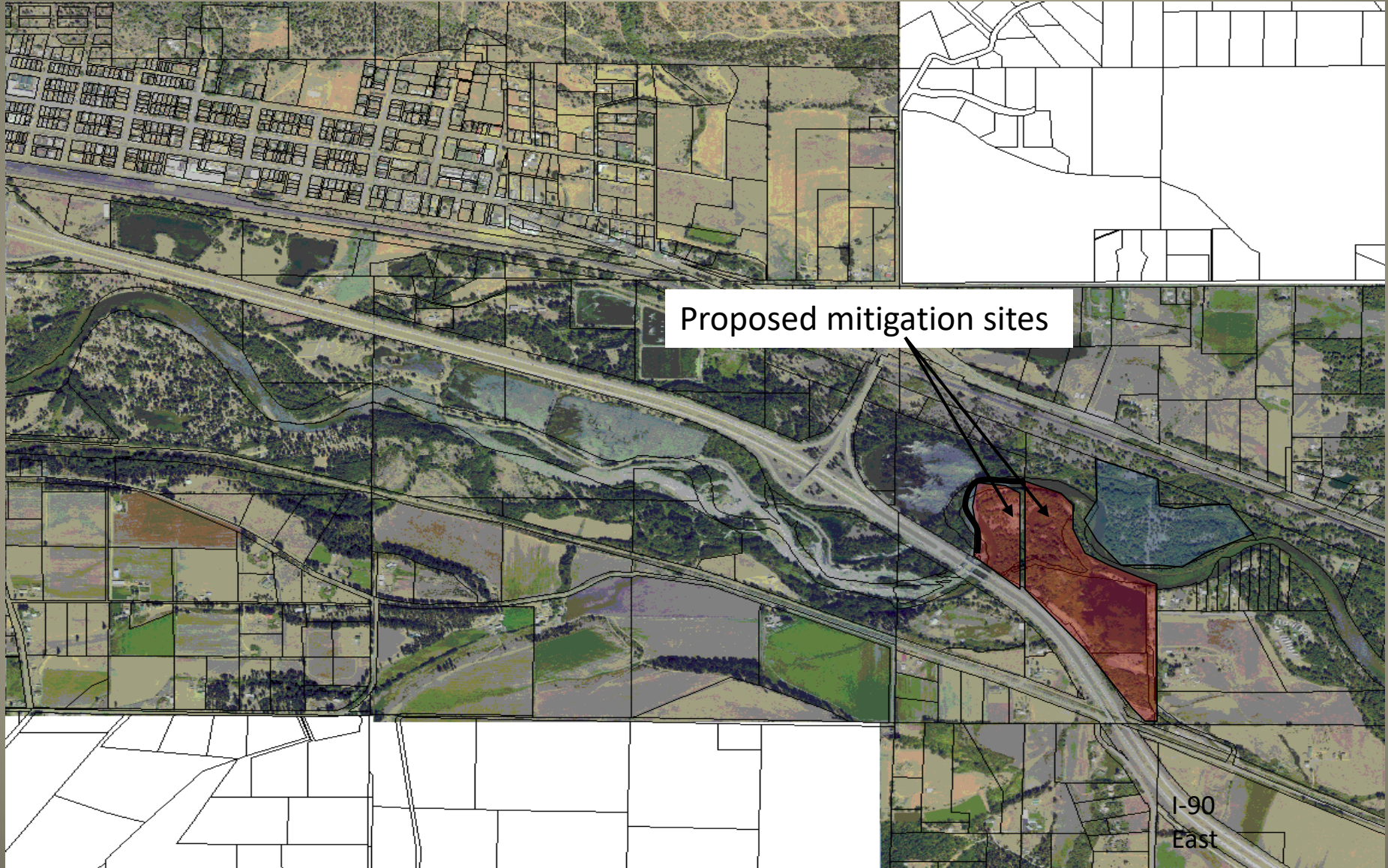




# YKFP Habitat Activities

Boones Side Channel Wetland Mitigation





Proposed mitigation sites

I-90  
East



# The End...



Photo Credit: T. Newsome