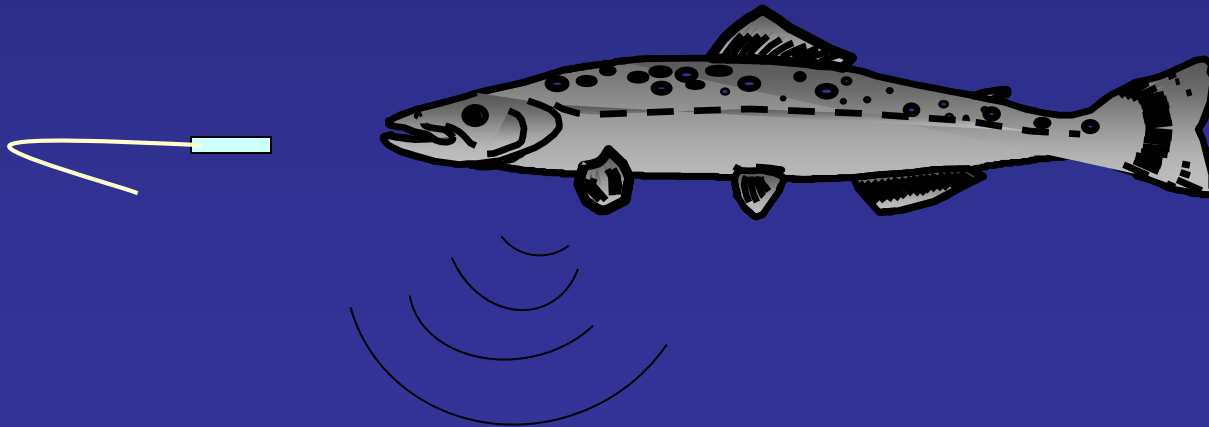


2004-2005 Steelhead Kelt Radio Tracking

By: Todd Newsome
Yakama Nation Fisheries Biologist

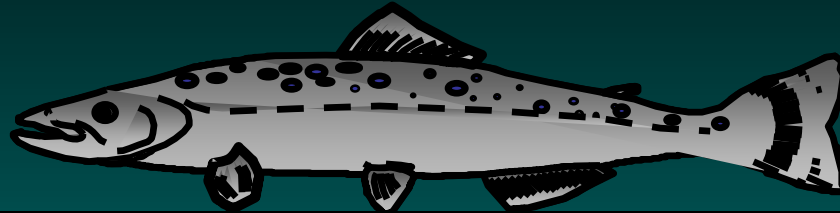


Acknowledgements

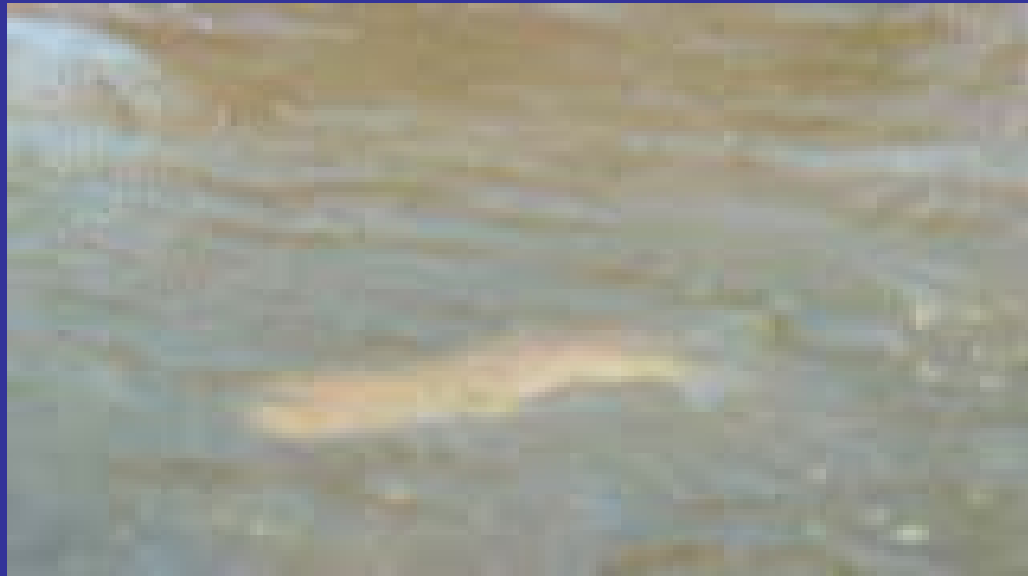
The radio tracking portion of the kelt re-conditioning program hinges on the expertise and persistence of field staff. Special thanks to University of Idaho and Travis Dick, and to the YN tracking crews, Joe Jay Pinkham III, Jason Allen, Conan Northwind, Quincy Wallahee, Andrew Lewis, and Ernie Reynolds. who tracked the kelts relentlessly throughout the winter and spring. Also to Bill Bosch, for his expertise in the data base management, and the people at Lotek International for the continued help and support.



2004-2005 Kelt Distribution in the Yakima Basin



<i>18</i>	<i>Below River Mile 70 (Mouth of Satus Creek)</i>
<i>10</i>	<i>Above River Mile 70</i>
<i>4</i>	<i>Satus Creek</i>
<i>1</i>	<i>Toppenish Creek</i>
<i>6</i>	<i>Naches River</i>
<i>2</i>	<i>Sulfur Drain</i>
<i>41</i>	<i>Total Radio Tagged Kelts</i>
<i>6</i>	<i>Recaptured at Prosser Spawned out.</i>

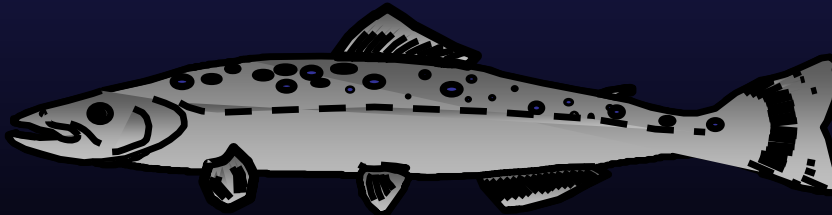


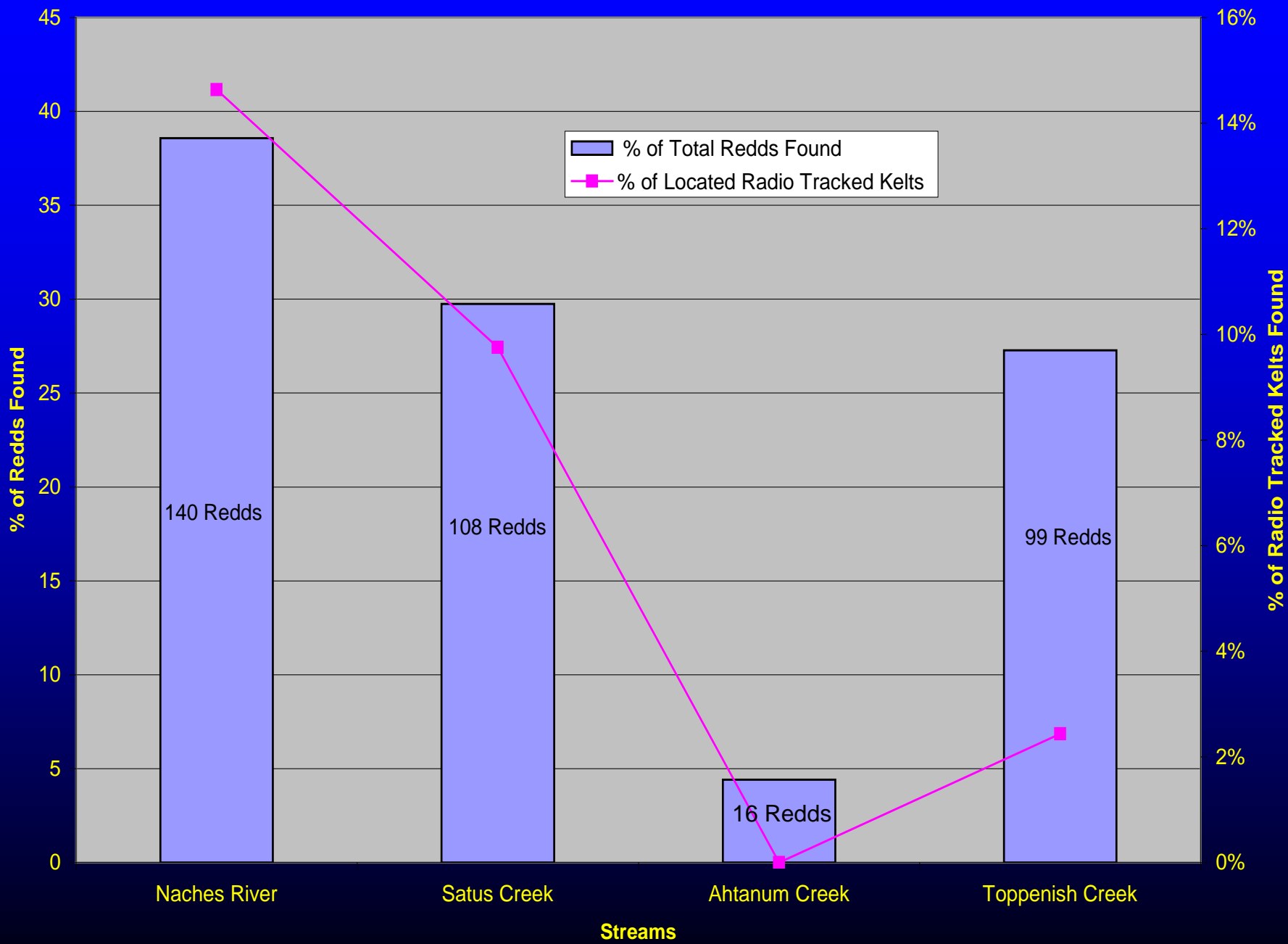




2004-2005 Kelt Distribution

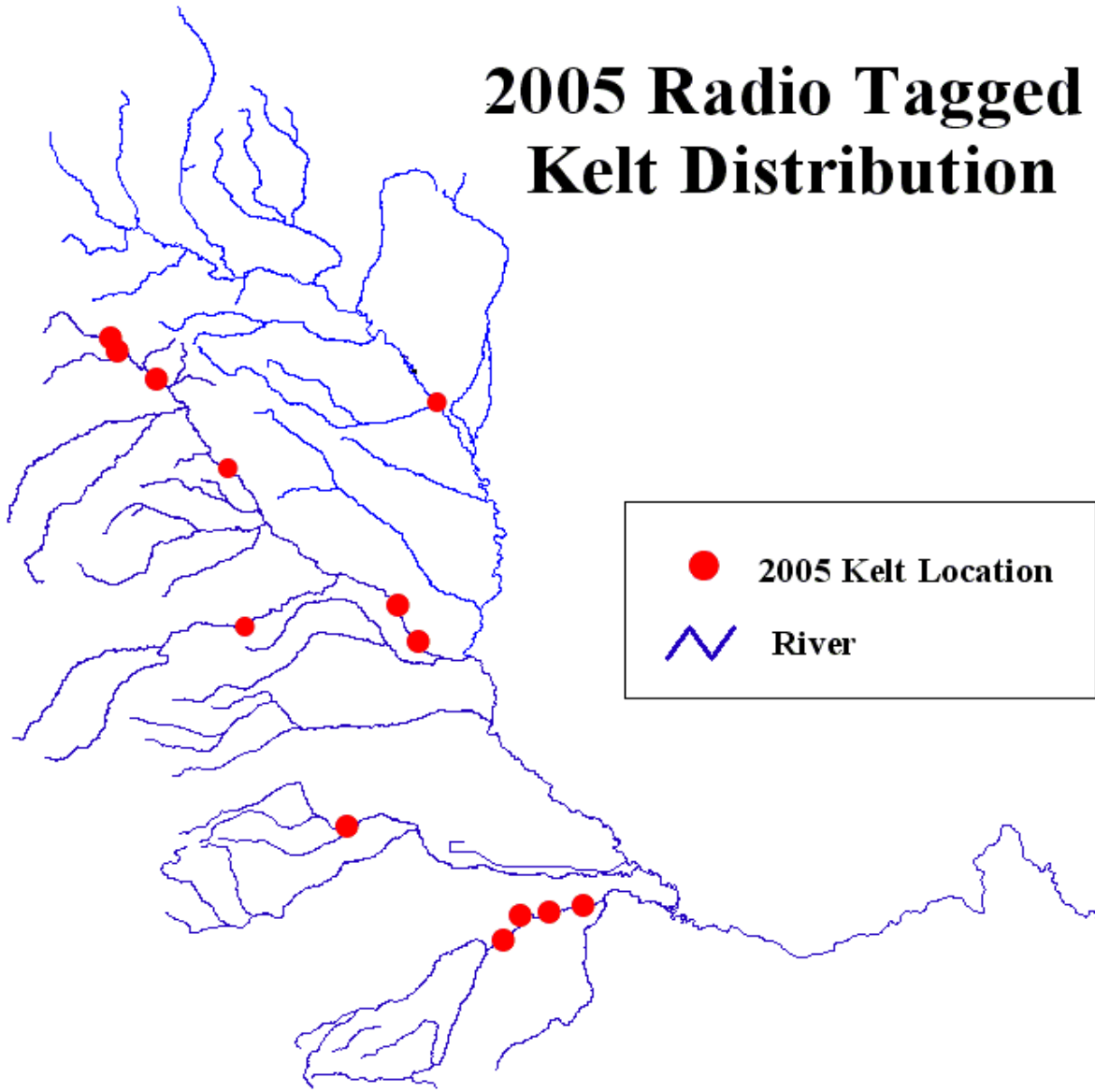
- 3 Radio Tagged Kelts traveled to the Upper Little Naches River. (Furthest tracked to date).
- 13 of 41 radio tags were detected in tributaries
 - *Including:*
 - *Satus Creek*
 - *Agency Creek*
 - *Dry Creek*
 - *Little Naches*





Location		No.Tags	% of Total	Extrapolation	
Yakima River below RM 70		17	0.41	105	mortality?
Yakima River above RM 70		10	0.24	62	
Naches		6	0.15	37	
Satus		4	0.10	25	
Toppenish		1	0.02	6	
Sulfur Drain		2	0.05	12	
Columbia River		1	0.02	6	
Totals		41	1	253	

2005 Radio Tagged Kelt Distribution



60 0 60 120 Kilometers



The End