

2012 Yakima Basin Coho Reintroduction

Presented By:

Todd Newsome

Fisheries Biologist for the Yakama Nation



Acknowledgements

YN:

Joe Jay Pinkham III

Conan Northwind

Quincy Wallahee

Andrew Lewis

Gene Sutterlict

Sarah Sohappy

Nate Pinkham

Joe Blodgett and

Prosser Hatchery Crew

WDFW:

Gabe Temple

Chris Johnson

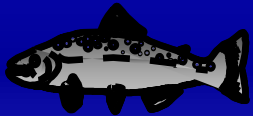
Trenton DeBoer

Background



Program Goal - Re-establish self-sustaining naturally spawning population of coho salmon in Yakima River

Phase I: 1999-2003 Complete



Feasibility *Interim Work: 2004-2006* Complete

Phase II: 2007-2011 Complete

Full Scale Reintroduction: Waiting....

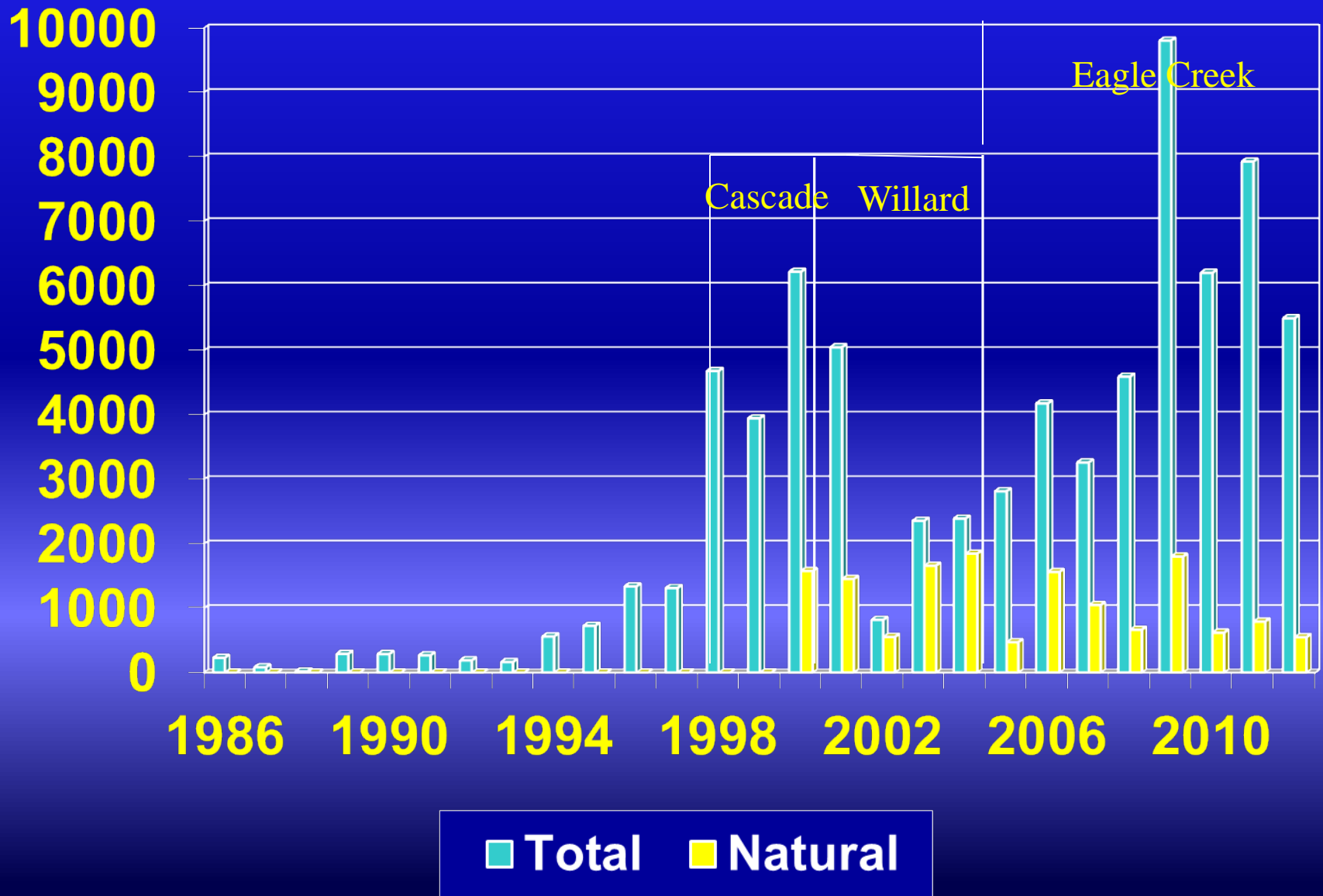


Coho Master Plan step I completed and being reviewed.



ISRP Step 2 Review: Summer 2013

Upper Yakima Coho Returns, 1986 – 2012



2012 Hatchery Coho Juvenile Acclimation Sites Yakima Basin

Volitional Release, April 16, 2012

Holmes: 179,694

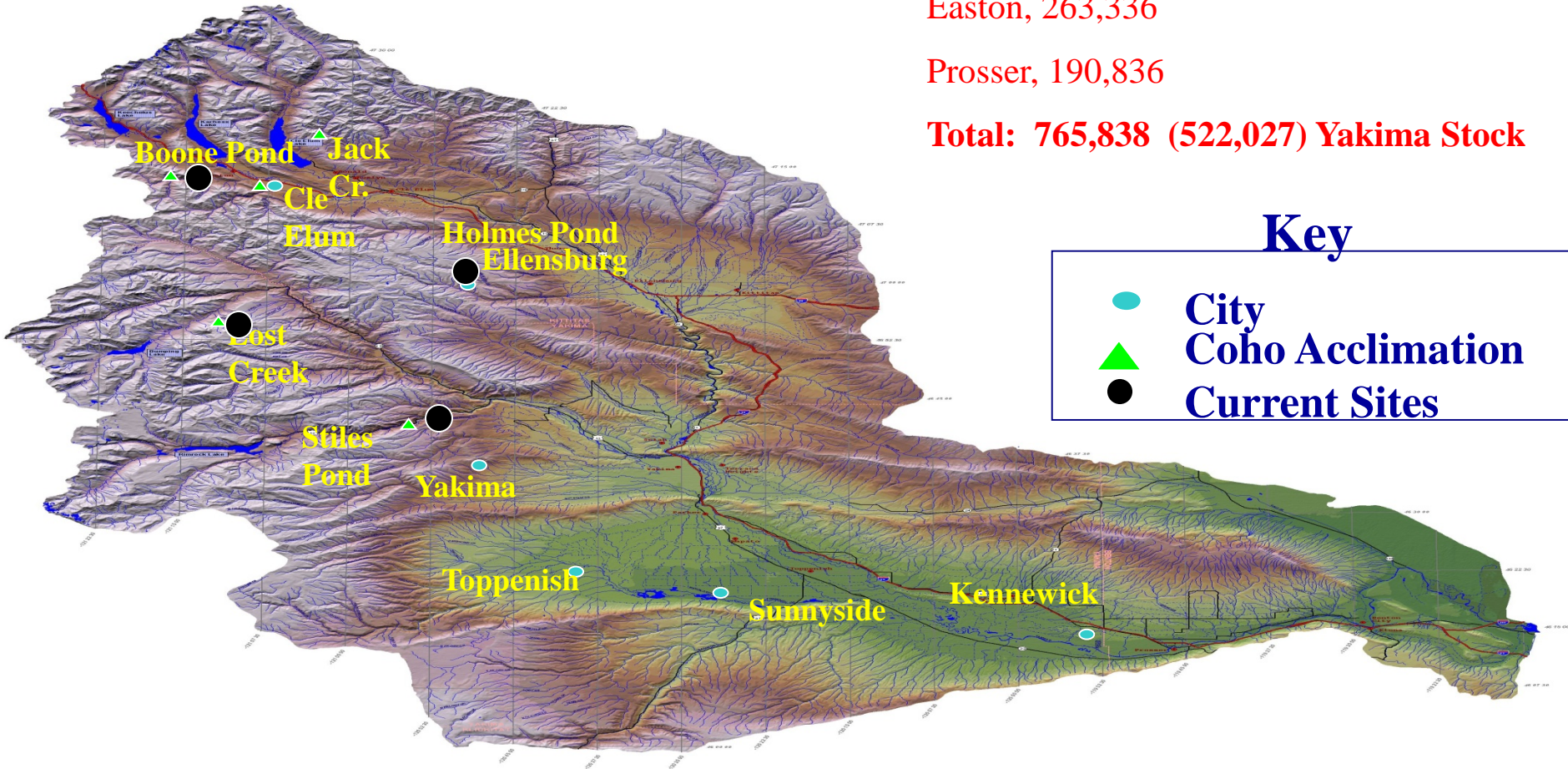
Lost Creek, 0

Stiles, 131,972

Easton, 263,336

Prosser, 190,836

Total: 765,838 (522,027) Yakima Stock

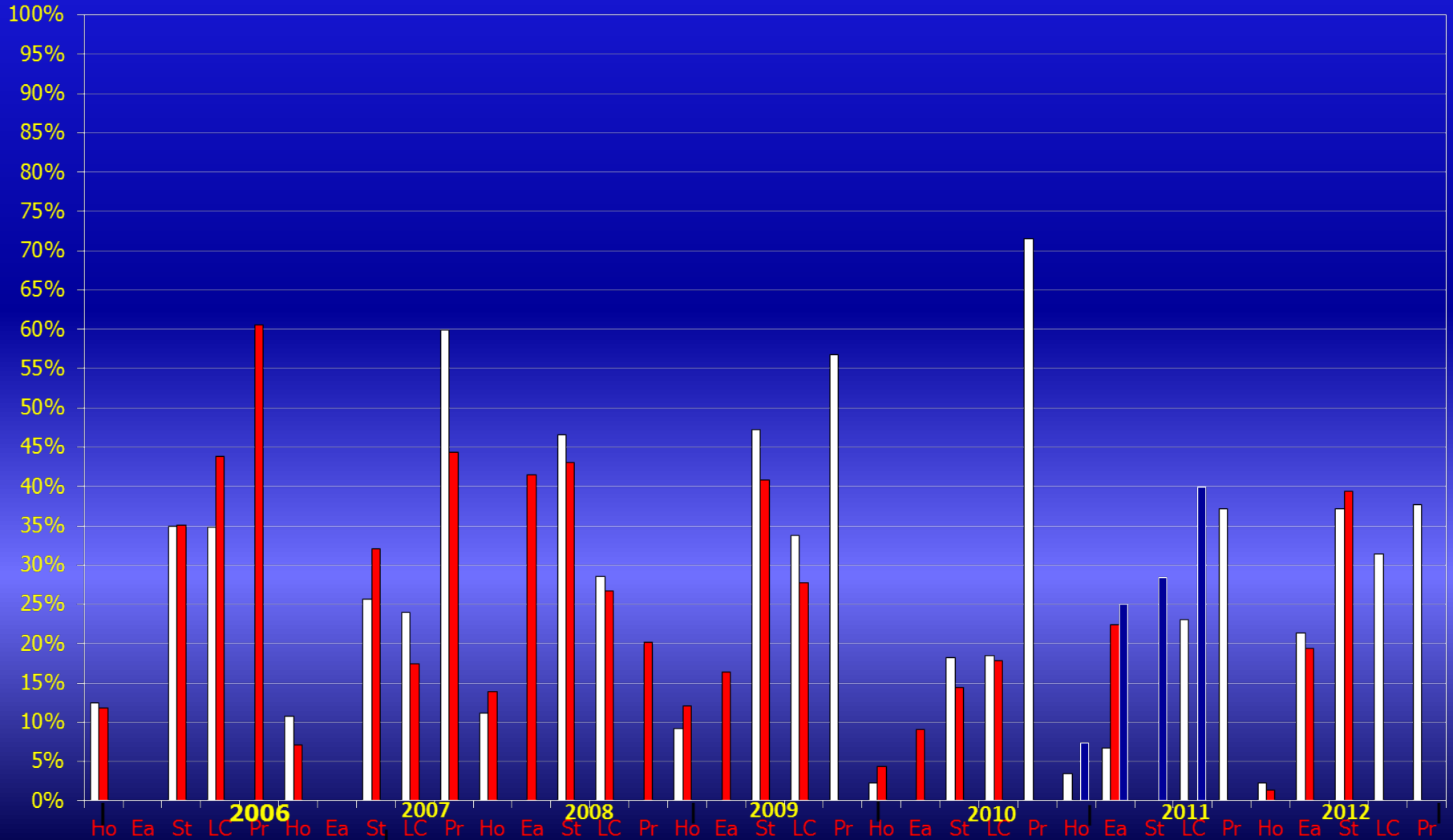


Key

- City
- Coho Acclimation
- Current Sites

Outmigration-Year Coho 2006-2012 (2004-2010 Brood) Time-of-Tagging-to- McNary Smolt Survival

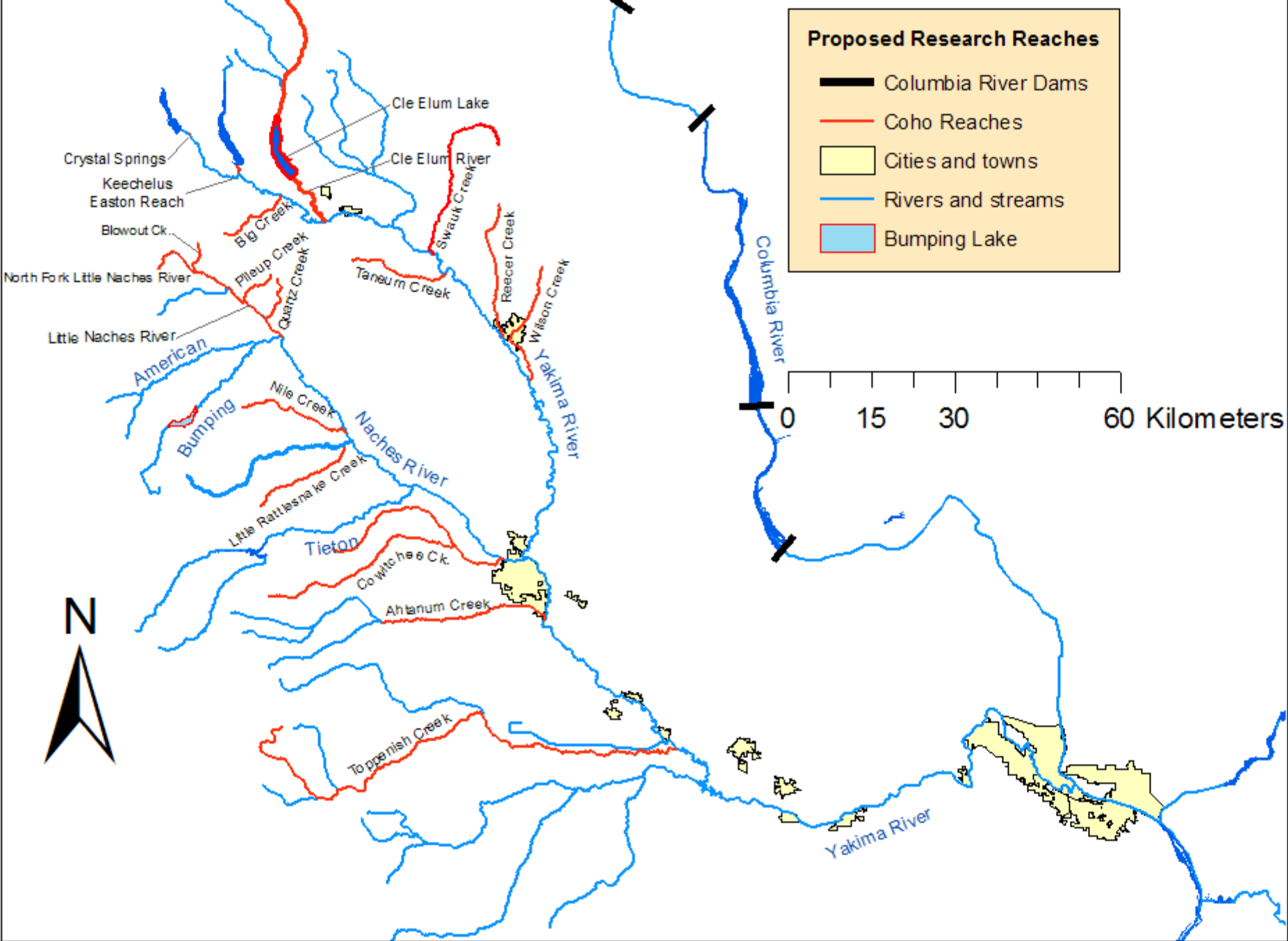
2006-2012 Tagging-to-McNary Smolt-to-Smolt Survival for Yakima Stock (red), Eagle Creek Stock (gray), Yakima x Eagle Creek (white)
Acclimation Sites within Release Year in Order (left to right): Holmes (Ho), Stiles (St), Lost Creek (LC), Prosser (Pr)



Continuing Coho Work

- Egg to Fry
- Parr Planting
- Mobile Acclimation
- Adult Planting





Egg To Fry



Good (60)

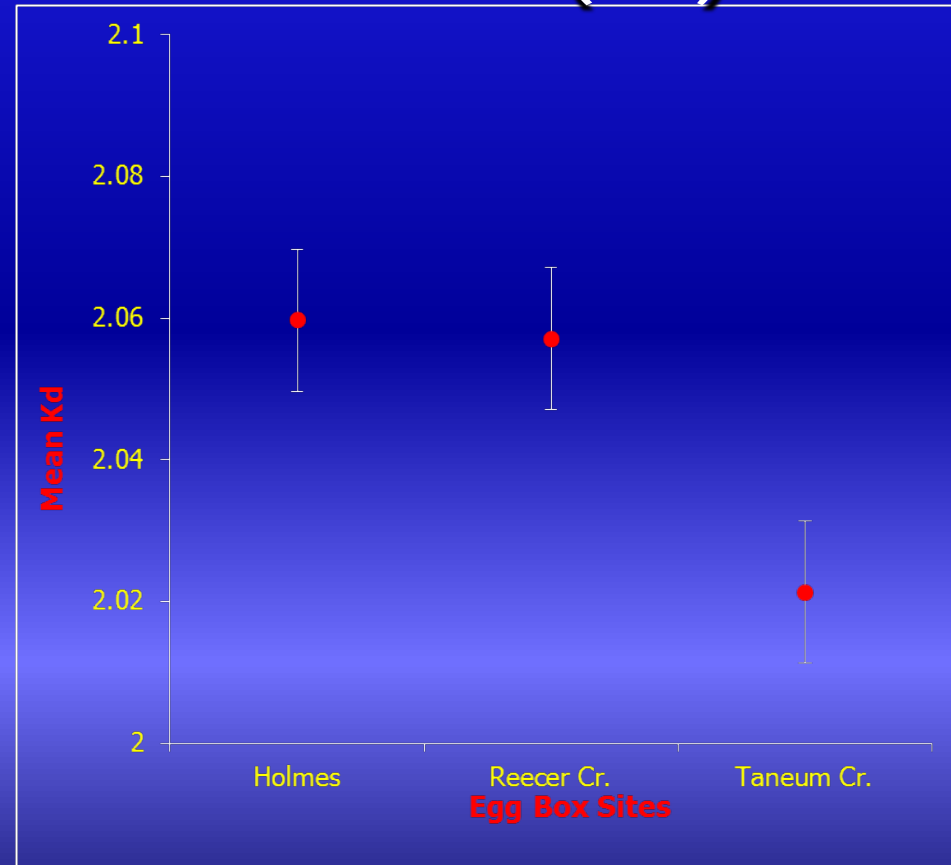
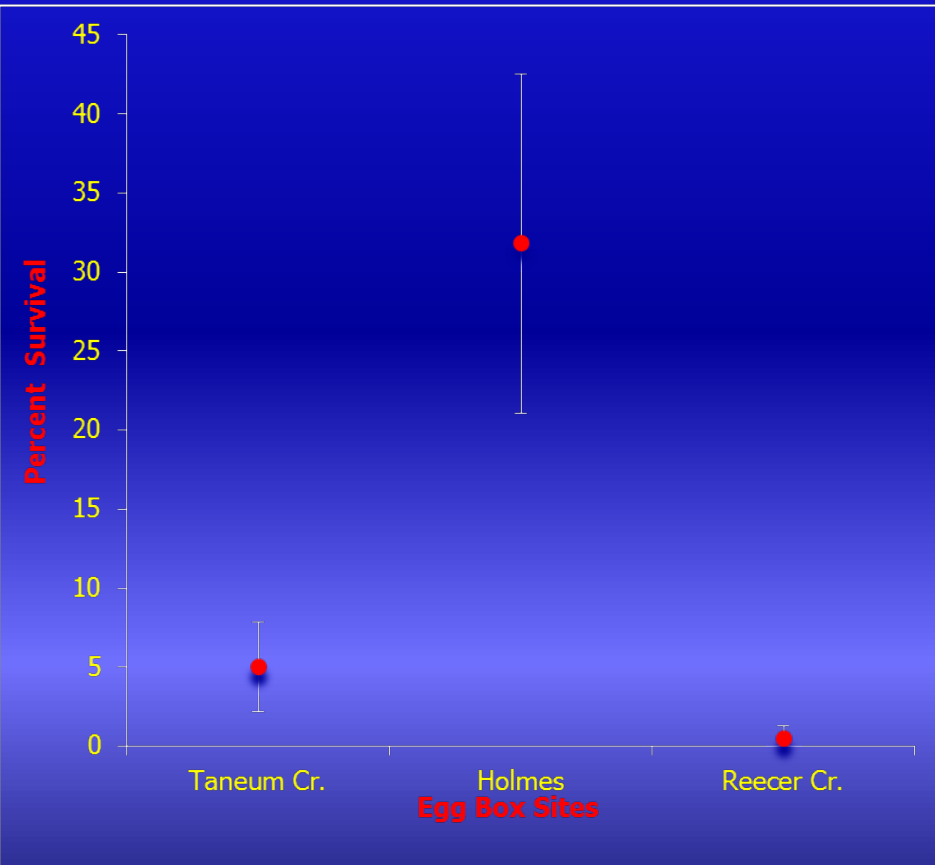


Bad (1)

Egg to Fry Survival

Survival

Condition
Factor (Kd)



Data Provided by: Trenton DeBoer (WDFW)

Summer Parr Plants

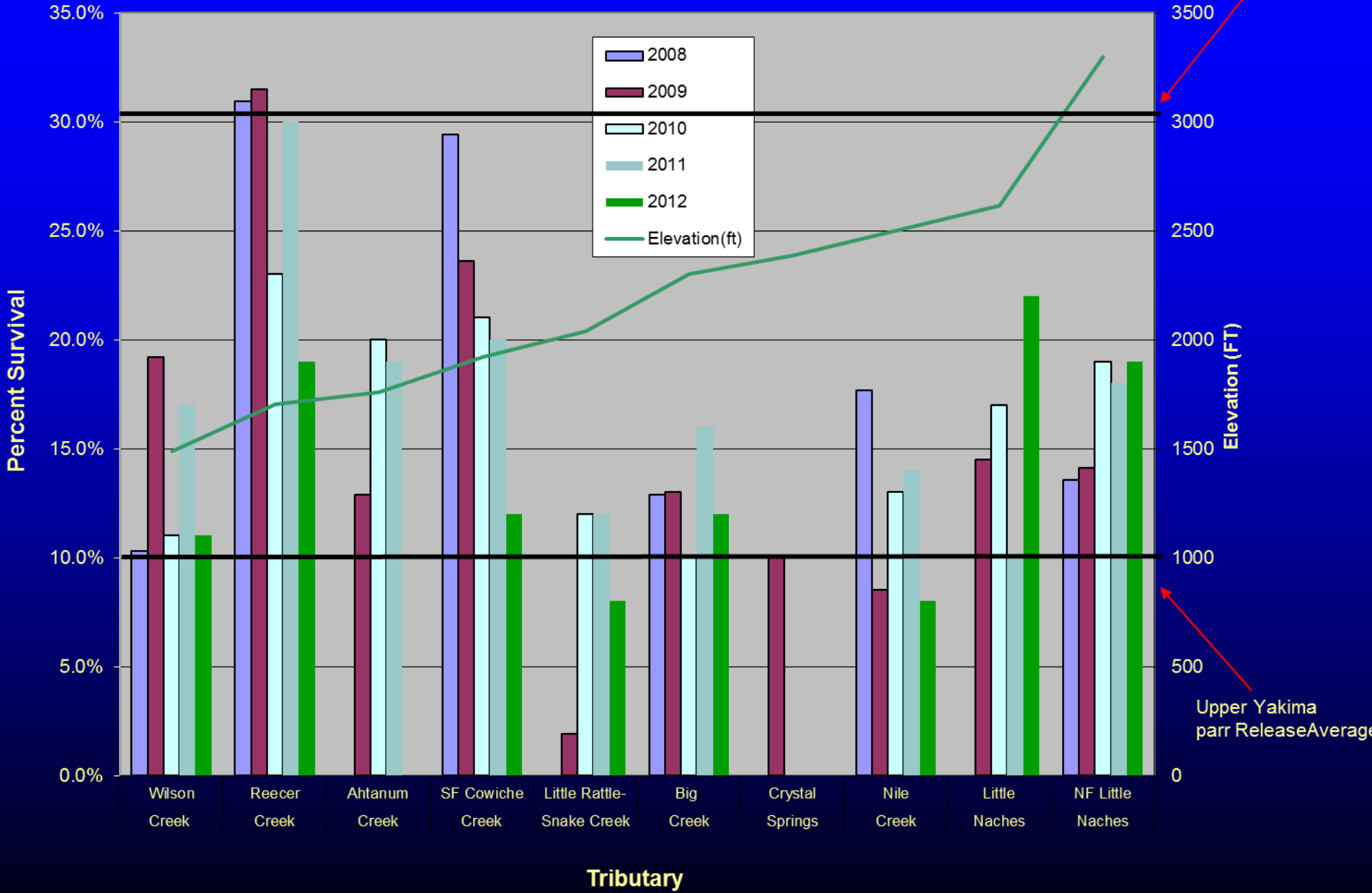


Pit Tag Parr Survivals to McNary Dam

	5 Year Average Parr	4 Year Average	Proposed	Estimated
Tributary	Survival	SAR	Release	Adults
Cowiche Creek	28%	3%	50000	420
Nile Creek	10%	2%	20000	40
North Fork Little Naches	16%	1%	10000	16
Wilson Creek	28%	6%	70000	1176
Reecer Creek	29%	4%	100000	1160
Big Creek	13%	2%	30000	78
Ahtanum Creek	13%	1%	50000	65
Little Naches River	17%	3%	100000	510
Rattlesnake Creek	14%	1%	50000	70
Total			480000	3535

Summer Parr Survival To McNary Dam

5yr Naches Smolt Average



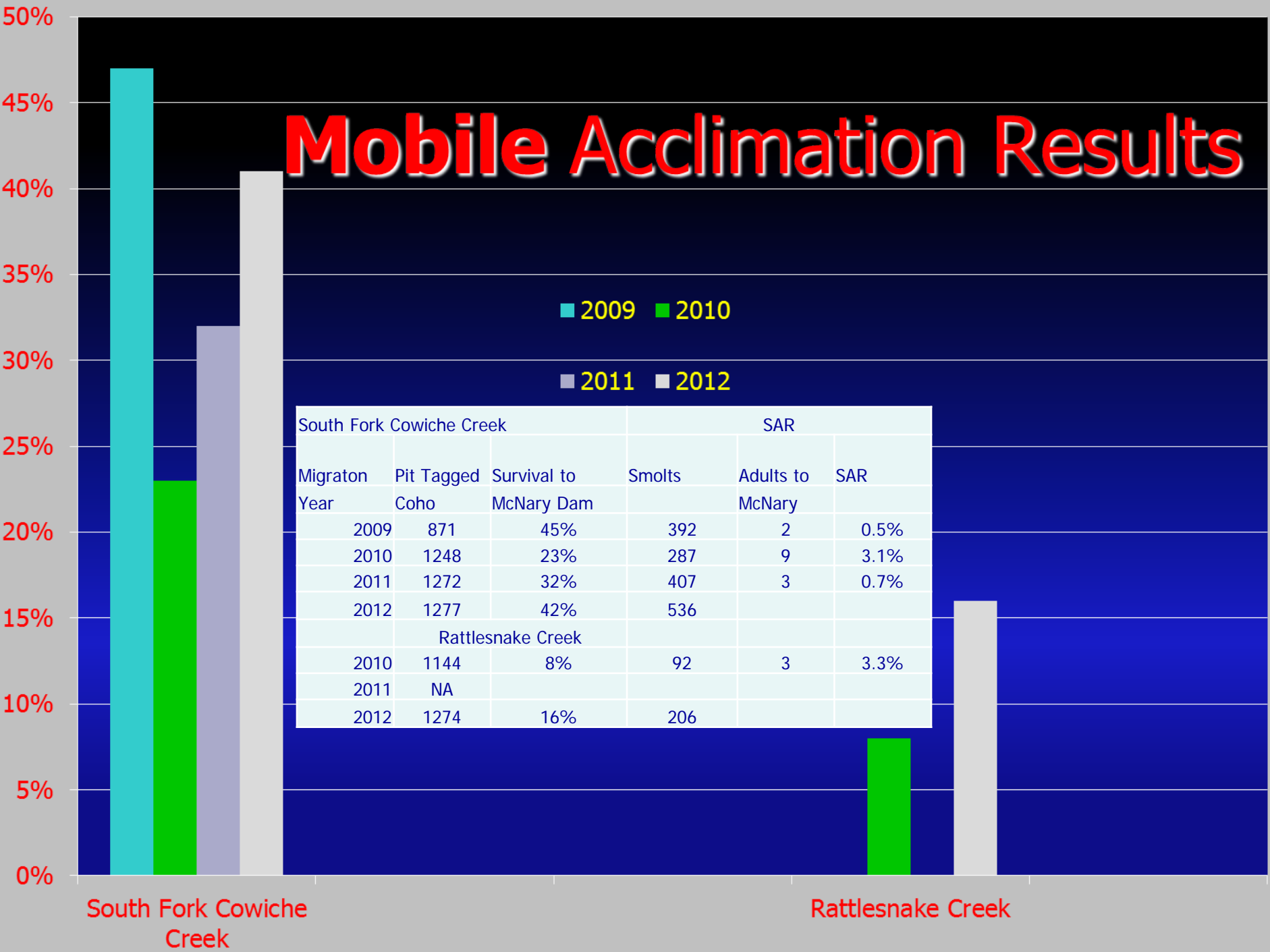
Upper Yakima parr ReleaseAverage

Mobile Acclimation

Rattlesnake Creek

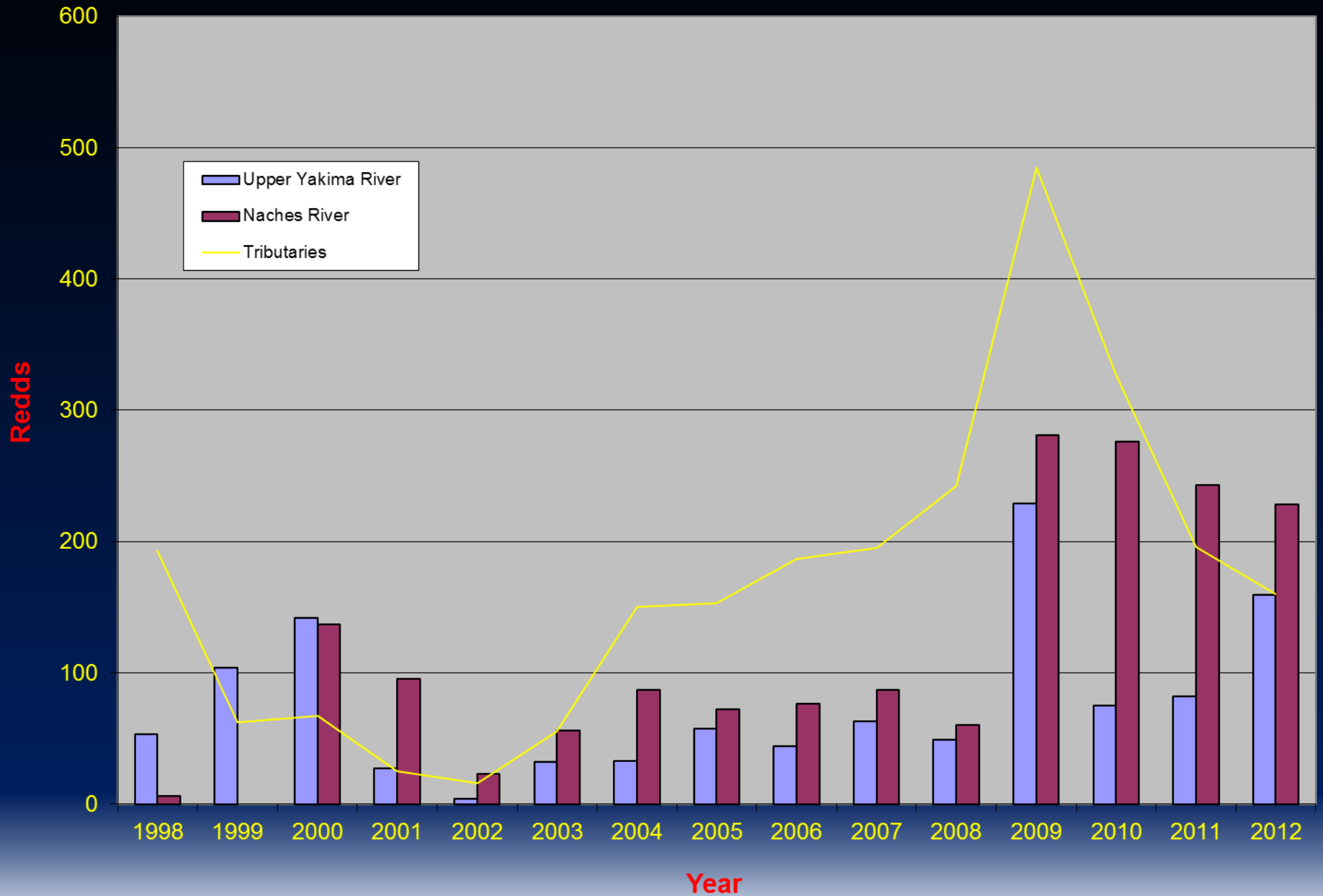


Mobile Acclimation Results



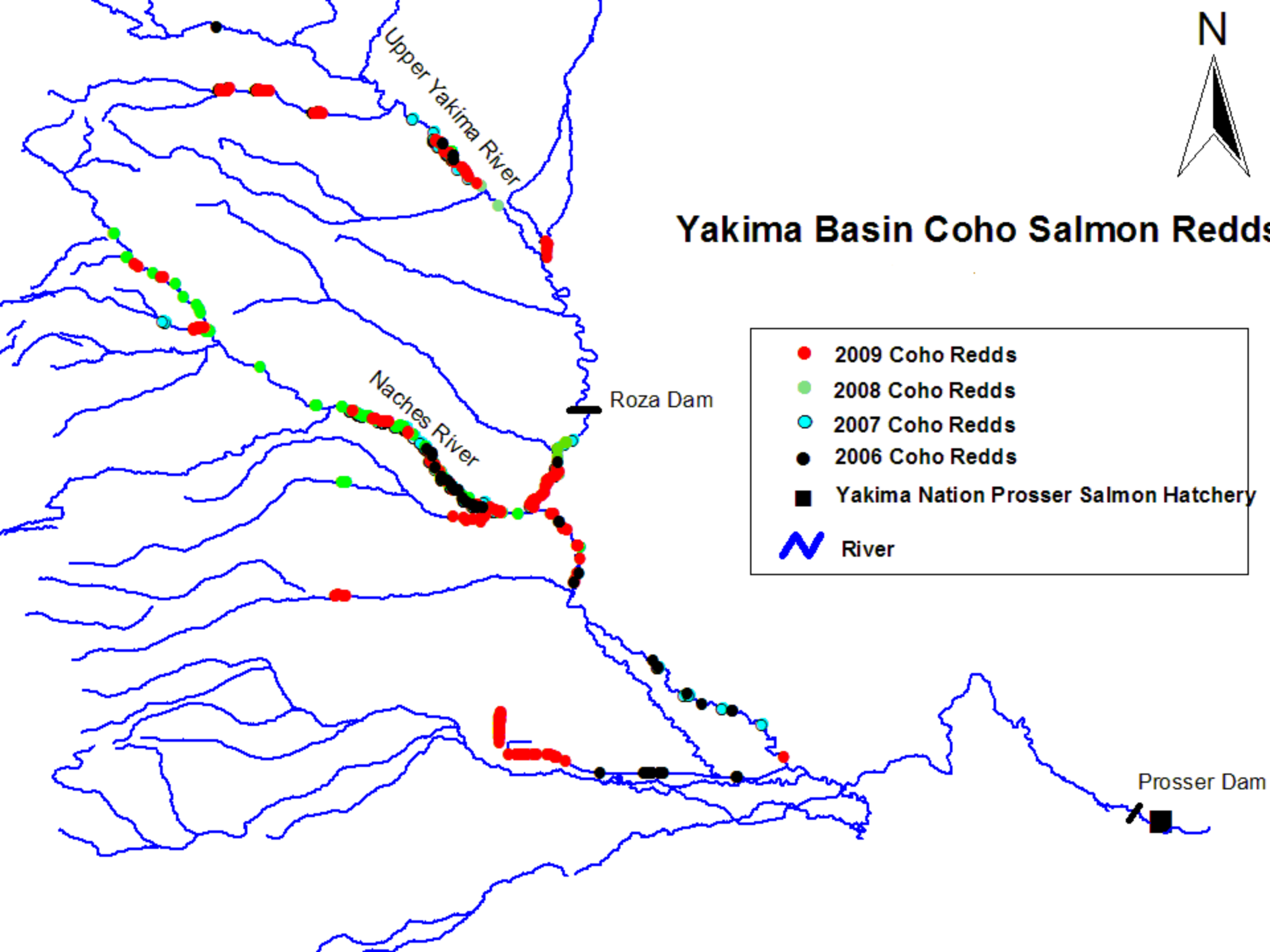
South Fork Cowiche Creek			SAR		
Migraton Year	Pit Tagged Coho	Survival to McNary Dam	Smolts	Adults to McNary	SAR
2009	871	45%	392	2	0.5%
2010	1248	23%	287	9	3.1%
2011	1272	32%	407	3	0.7%
2012	1277	42%	536		
Rattlesnake Creek					
2010	1144	8%	92	3	3.3%
2011	NA				
2012	1274	16%	206		

Yakima Basin Redd Counts 1998-2012

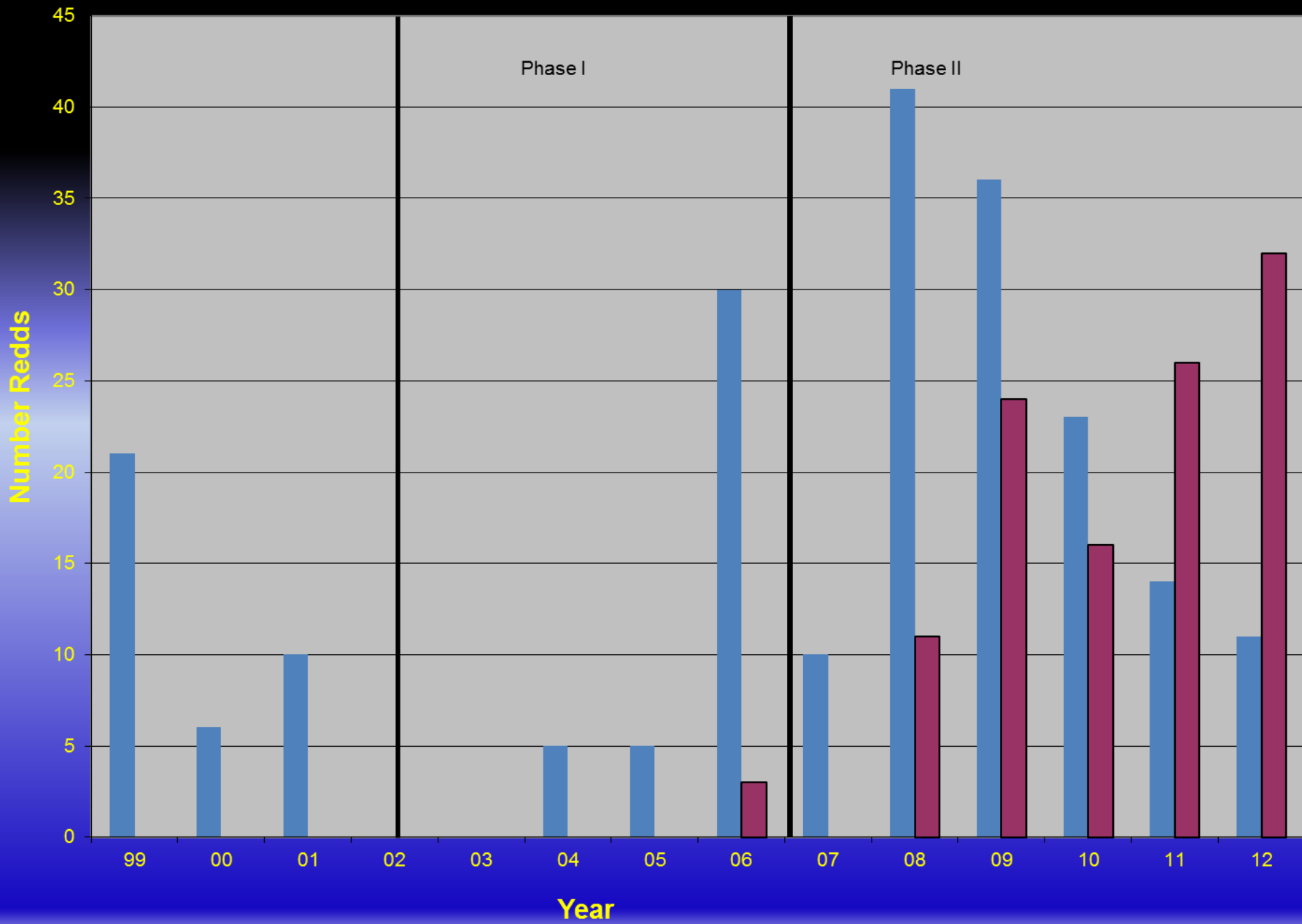




Yakima Basin Coho Salmon Redds





Cowiche/Reecer Creek Redd Counts



Adult Out Planting



 **Study In Progress** 

Please Do Not Disturb!

This is a research site designed to evaluate the spawning success of coho salmon and the future interactions of their offspring with other resident fish species. This research is being conducted by the Yakama Nation Fisheries (YN) and the Washington Department of Fish and Wildlife (WDFW).

Please do not disturb racks, site, or fish.

NOTE: FISH HAVE BEEN TREATED WITH CHEMICALS AND ARE NOT EDIBLE!

Please direct questions to:
YN: 509-865-6262 Todd Newsome
WDFW: 509-925-4467 ext#4

30 10:11PM



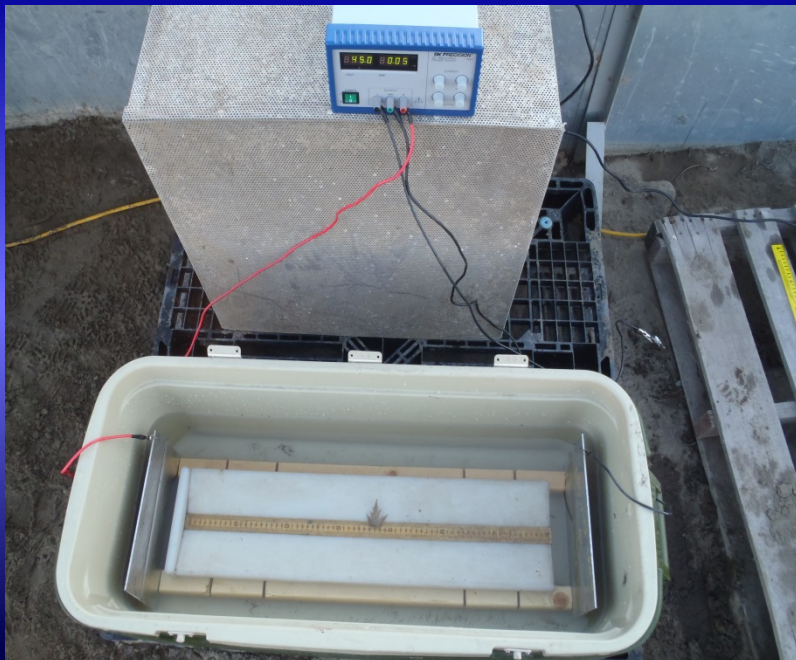
Taneum Creek Coho Reintroduction

YN and WDFW cooperative Project

Coho are planted the last week of October and the first week of November in 2 consecutive days (60 per day) Maintenance Plant

- **2012**

- 120 Coho (60 Males, 60 Females) were tagged with Floy tags to differentiate Males and Females. And to separate planted coho from wild coho.
- 54 Coho redds were located spread over a large area



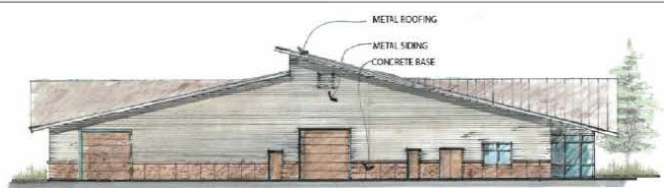
Taneum Creek Adult Coho Salmon out-planting Results

Year	Adult Females	Redds	Number of	Migration	Survival to	
			coho Pit Tagged	Year	McNary Dam	
2007	150	75	1300	2009	16%	
2008	150	50	1812	2010	10%	
2009	150	130	4515	2011	13%	
2010	150	134	1054	2012	26%	
2011	150	100	2416	2013	-	
2012	60	54	-	2014		

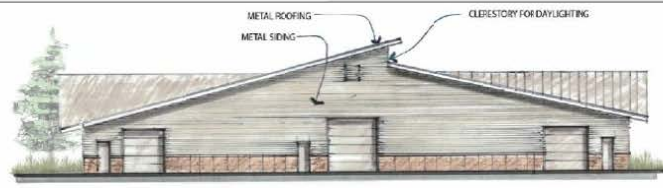
Taneum Creek Adult Returns 2012

- Bonneville- 24
- McNary- 13
- Prosser- 11
- Roza- 11
- Taneum Creek- 3
- McNary to McNary Smolt to Adult return
2.1%

Proposed YKFP Coho Facility



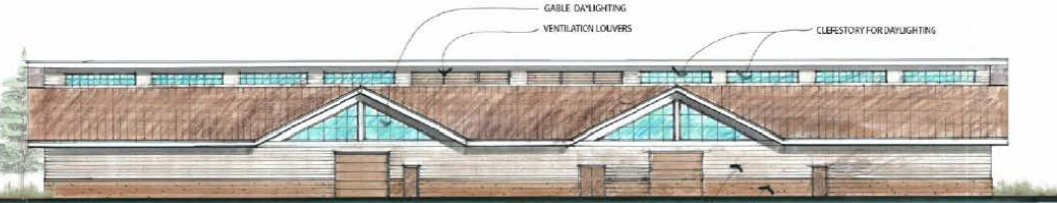
EAST ELEVATION
 3/32" = 1' - 0"



WEST ELEVATION
 3/32" = 1' - 0"



REVISED NORTH ELEVATION
 3/32" = 1' - 0"



REVISED SOUTH ELEVATION
 3/32" = 1' - 0"

REV	DATE	BY	DESCRIPTION



WARNING
 0 1/2
 IF THIS DRAWING HAS ANY
 REVISIONS, IT SHALL BE
 IN ACCORDANCE WITH THE
 15% OF SCALE.

McMILLEN, LLC
 1401 3RD AVENUE, SUITE 100
 BENTON, ID 83702
 OFFICE: 208-342-4214
 FAX: 208-342-4218



YAKAMA NATION FISHERIES
 HOLMES RANCH HATCHERY CONCEPT DESIGN
 HATCHERY BUILDING ELEVATIONS

DESIGNED: M. REESE
 DRAWN: B. LITA
 CHECKED:
 ISSUED DATE: 3/16/12

DRAWING
AH-2
 SCALE: AS NOTED

Tools Sign Comment

Sign In

- Export PDF
- Create PDF
- Send Files

Adobe SendNow
 Verify your file is received. Send files online instead of email.

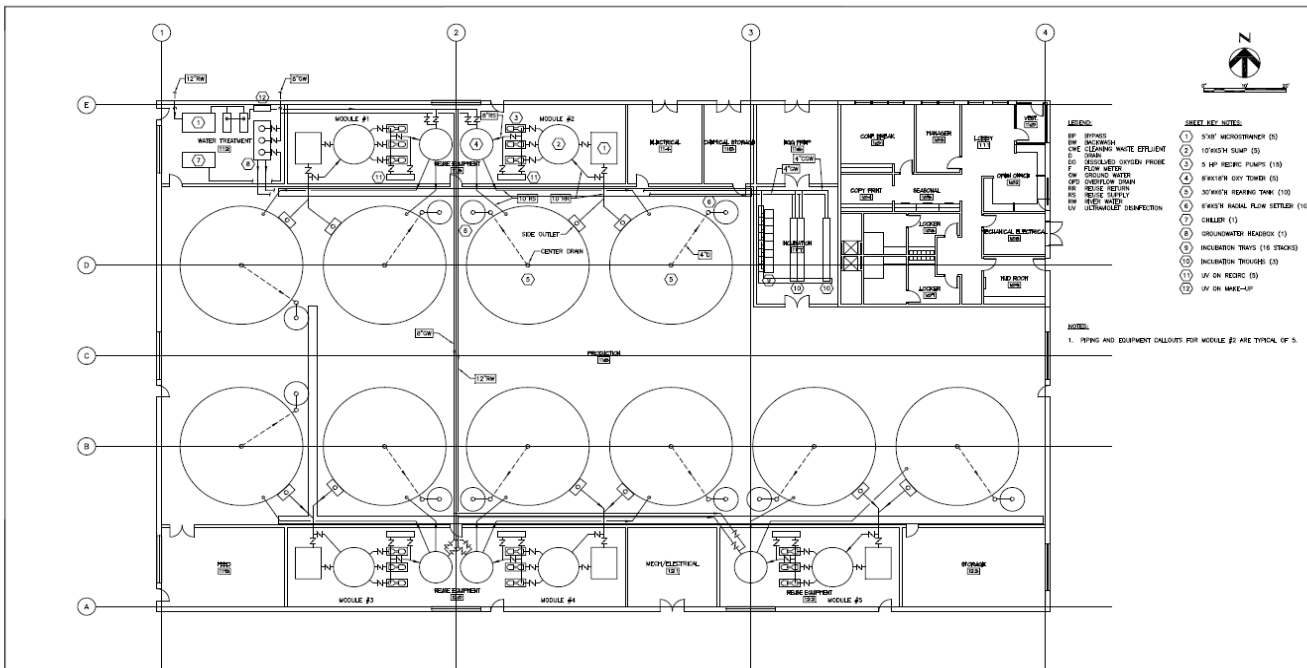
Select File:
 Holmes Elevationsandsketch2.pdf
 1 file / 355 KB

To...
 Type in email addresses

Send Link

Store Files

Capacity: 600,000 Coho smolt equivalents



REV	DATE	BY	DESCRIPTION

WARNING

IF THIS DRAWING IS USED FOR CONSTRUCTION OF THIS PROJECT BY ANY PARTY OTHER THAN THE CONTRACTOR, THE CONTRACTOR SHALL BE RESPONSIBLE FOR THE DESIGN AND CONSTRUCTION OF THIS PROJECT.

McMILLEN, LLC

1500 E. REGINA DRIVE
SUITE 100
DENVER, CO 80202
OFFICE: 303.342.4214
FAX: 303.342.6219



DESIGNED BY: W. REISLER	DRAWING
DRAWN BY: L. LITA	MH-2
CHECKED BY:	SCALE: AS NOTED
ISSUED DATE: 3/15/12	

YAKAMA NATION FISHERIES
HOLMES RANCH HATCHERY CONCEPT DESIGN
REUSE SYSTEM PIPING PLAN