

2013 Yakima Basin Coho Reintroduction

Presented By:

Todd Newsome

Fisheries Biologist for the Yakama Nation



Acknowledgements

YN:

Joe Jay Pinkham III

Conan Northwind

Quincy Wallahee

Andrew Lewis

Brady Carl

Gene Sutterlict

Sarah Sohappy

Nate Pinkham

WDFW:

Gabe Temple

Chris Johnson

Trenton DeBoer

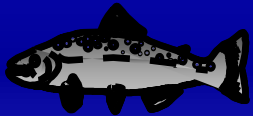


Background



Program Goal - Re-establish self-sustaining naturally spawning population of coho salmon in Yakima River

Phase I: 1999-2003 Complete



Feasibility *Interim Work: 2004-2006* Complete

Phase II: 2007-2011 Complete

Full Scale Reintroduction: Waiting...

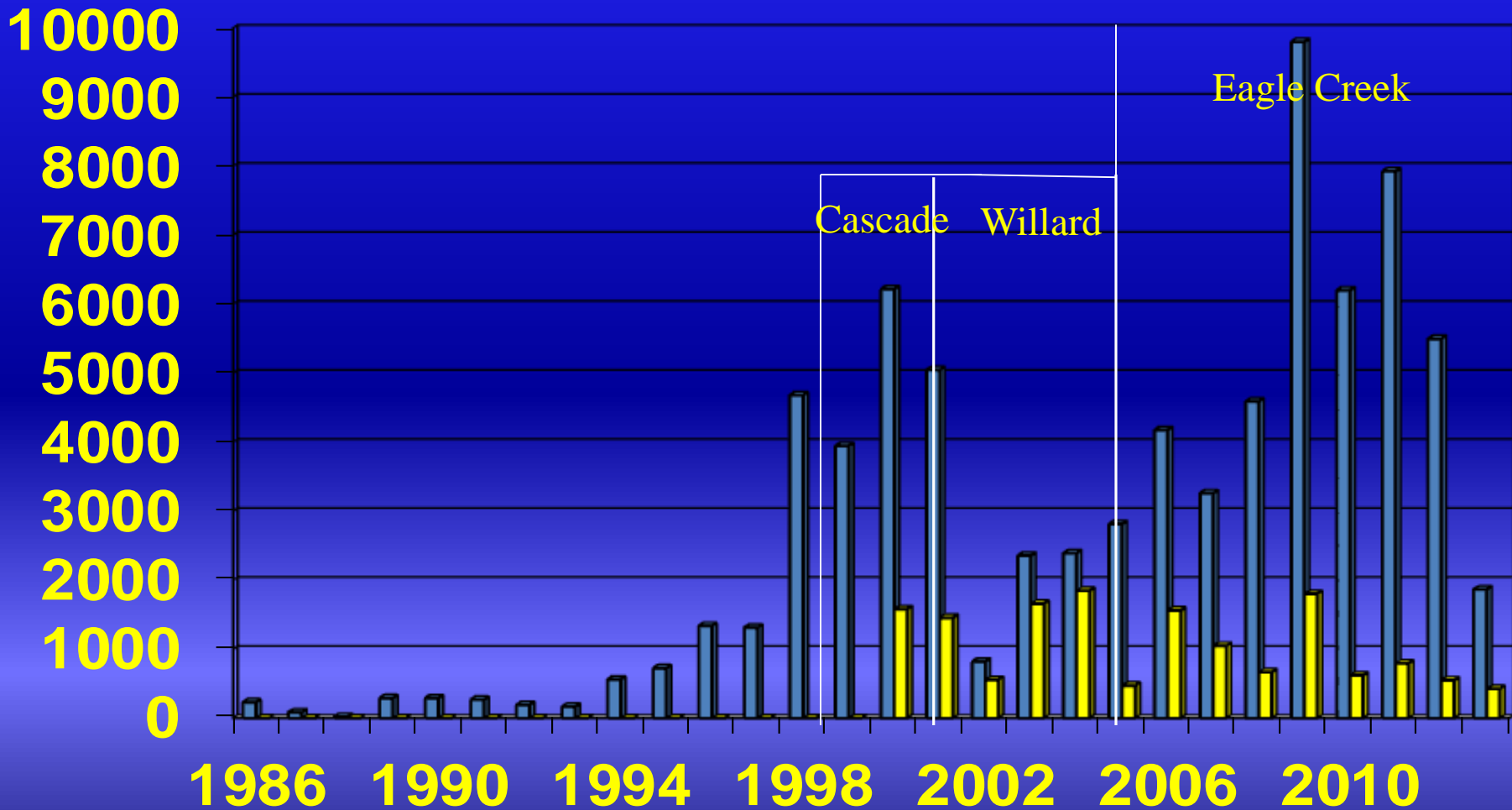


Coho Master Plan step I completed



ISRP Step 2/3 Review: Soon

Upper Yakima Coho Returns, 1986 – 2013



■ Total ■ Natural

2013 Hatchery Coho Juvenile Acclimation Sites Yakima Basin

Volitional Release, April 15, 2013

Holmes, 104,059

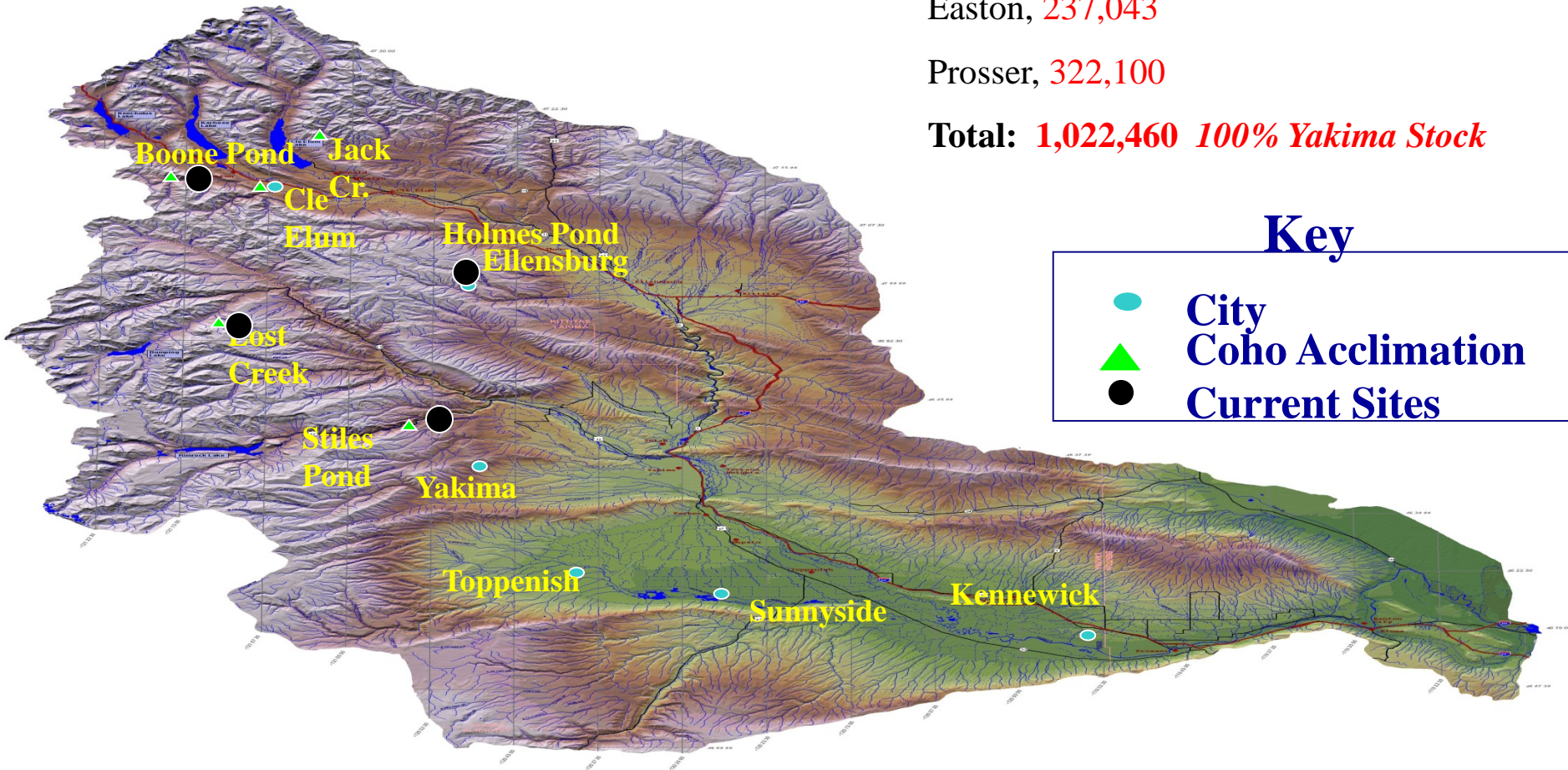
Lost Creek, 124,425

Stiles, 234,833

Easton, 237,043

Prosser, 322,100

Total: 1,022,460 100% Yakima Stock

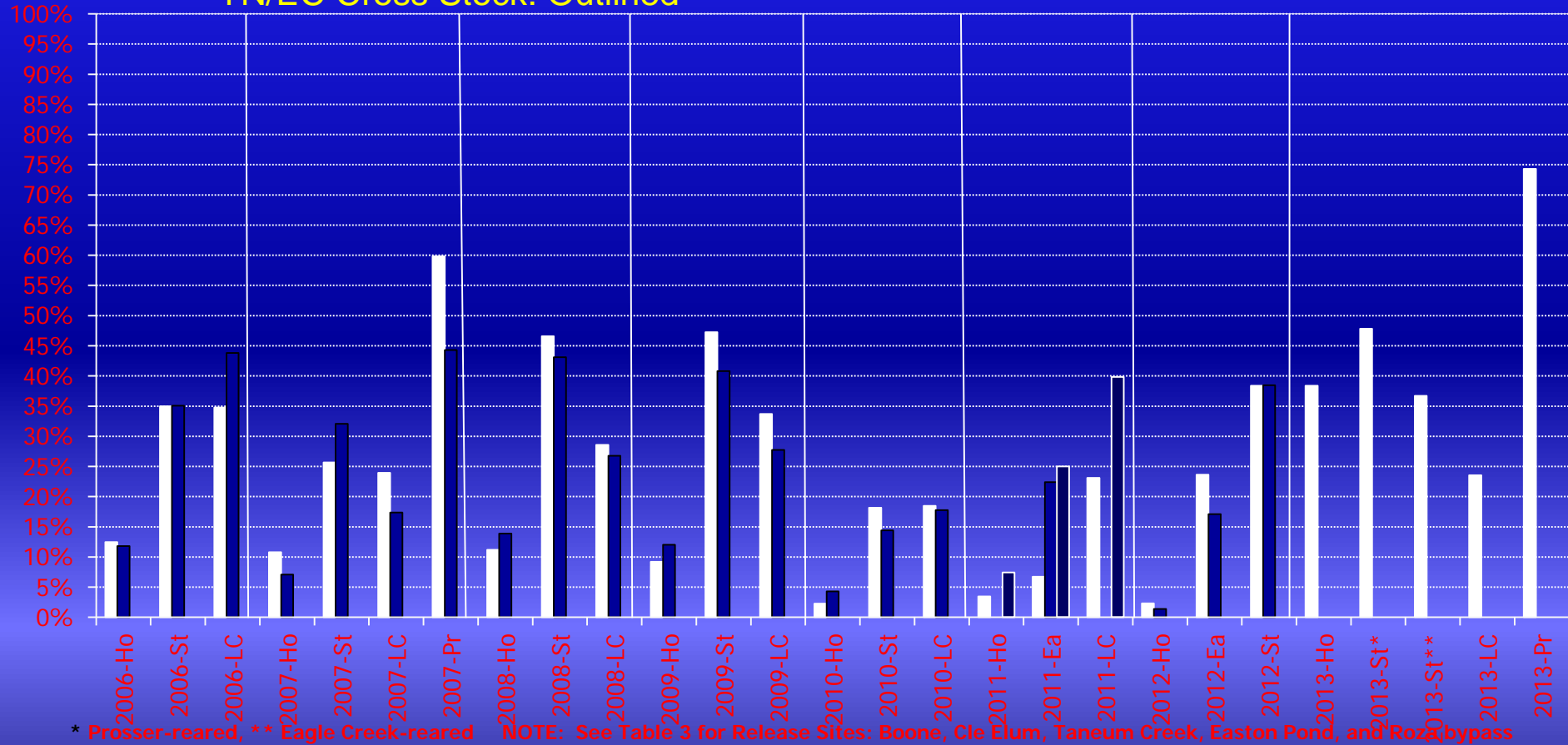


Key

- City
- ▲ Coho Acclimation
- Current Sites

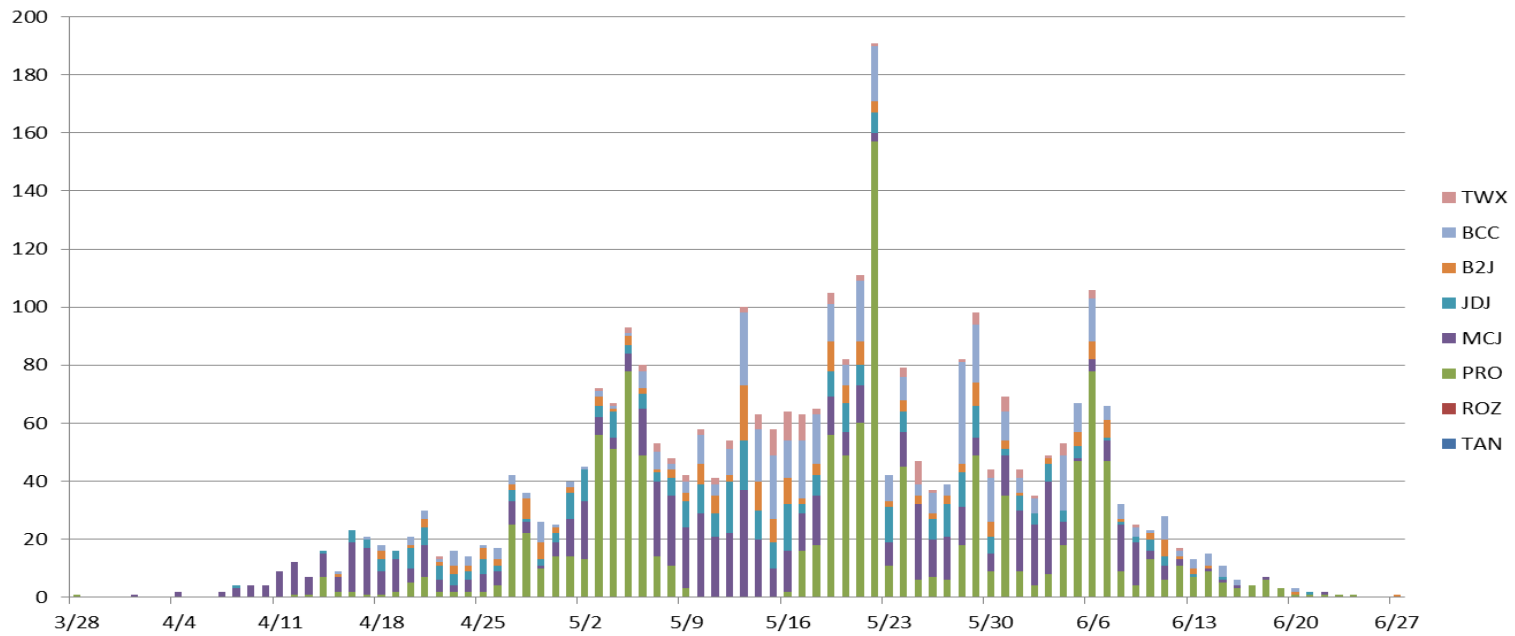
Outmigration-Year Coho 2006-2012 (2004-2011 Brood) Time-of-Tagging-to- McNary Smolt Survival

Yakama Stock: White
Eagle Creek Stock: Black
YN/EC Cross Stock: Outlined

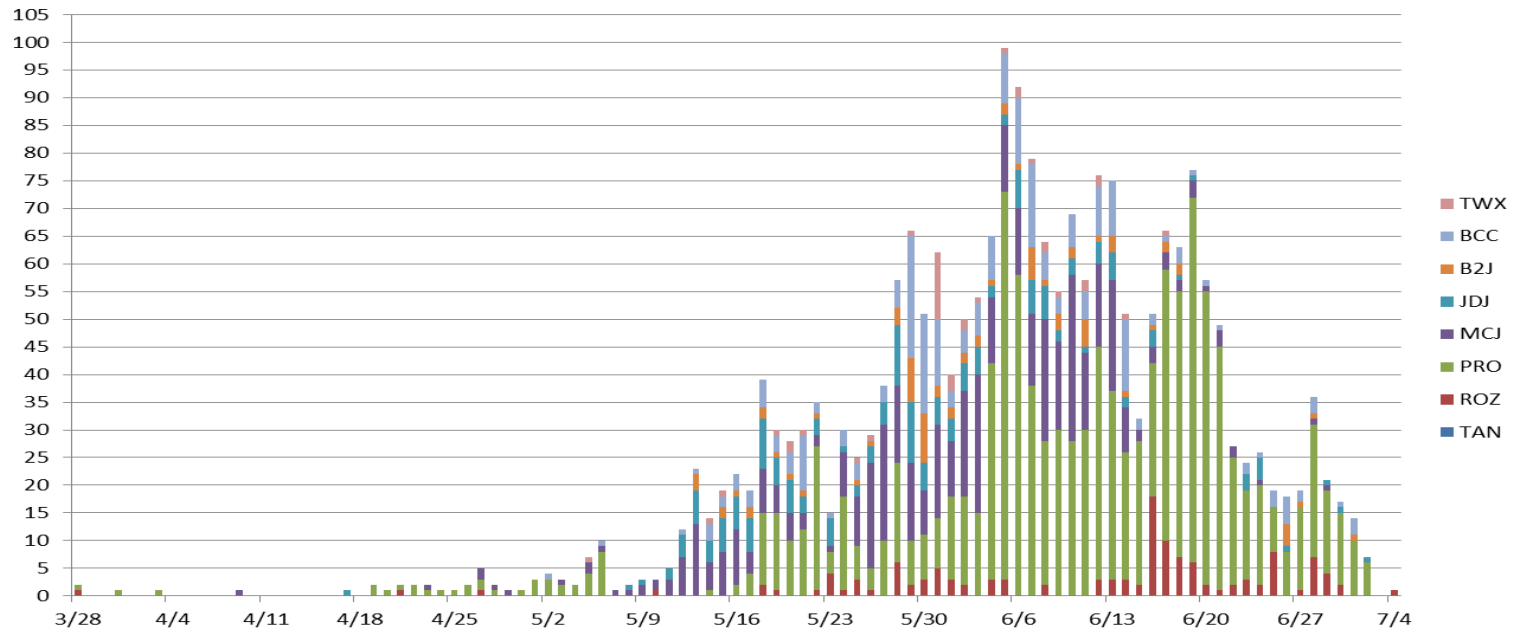


* Prosser-reared, ** Eagle Creek-reared NOTE: See Table 3 for Release Sites: Boone, Cle Elum, Taneum Creek, Easton Pond, and Rosebypass

2013 Detections of Coho Smolt Releases



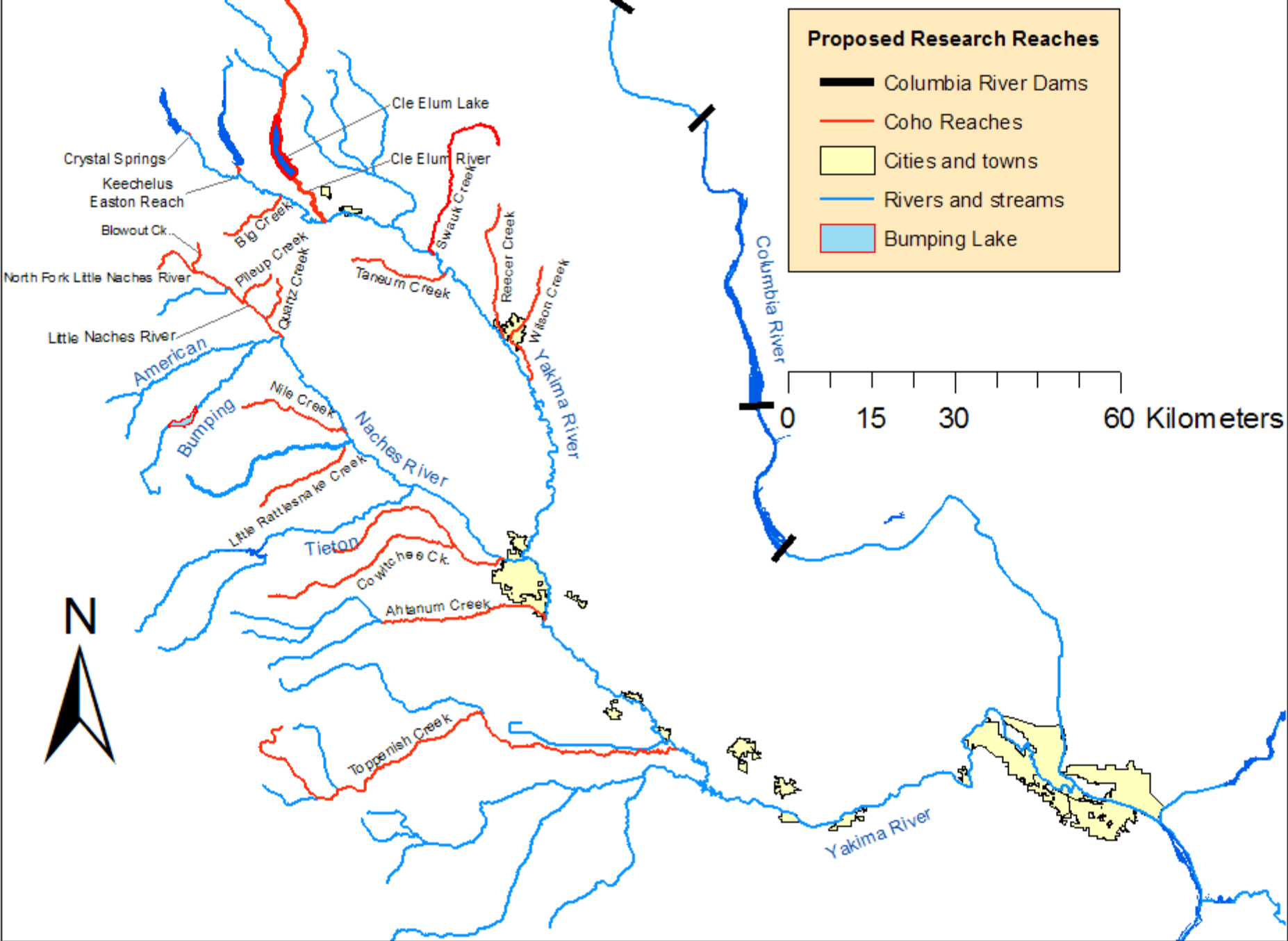
2013 Detections of 2012 Coho Parr Releases



Continuing Coho Work

- Egg to Fry
- Parr Planting
- Mobile Acclimation
- Adult Planting





Egg to Fry

Good Times, Good Times

Broken Shovel
Thanks Reecer Creek Flood plain

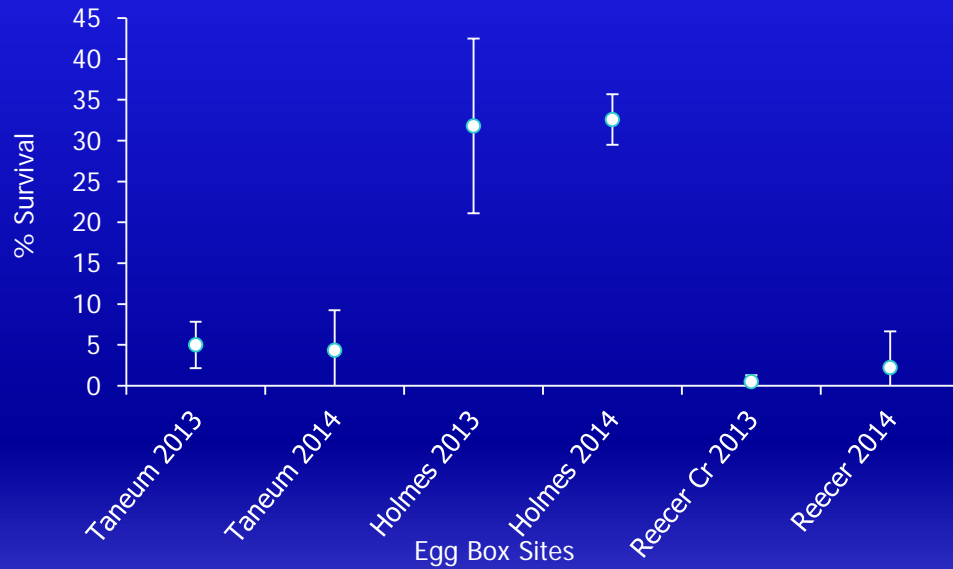


Trenton Working
“Always a good sign”



Egg to Fry Survival

Egg-to-Fry Survival



Year 1

8 males 8 females mixed everything, created 30 total redds.

Year 2

2 males and 2 females crossed together and duplicated at each site. Three of each cross and each site.

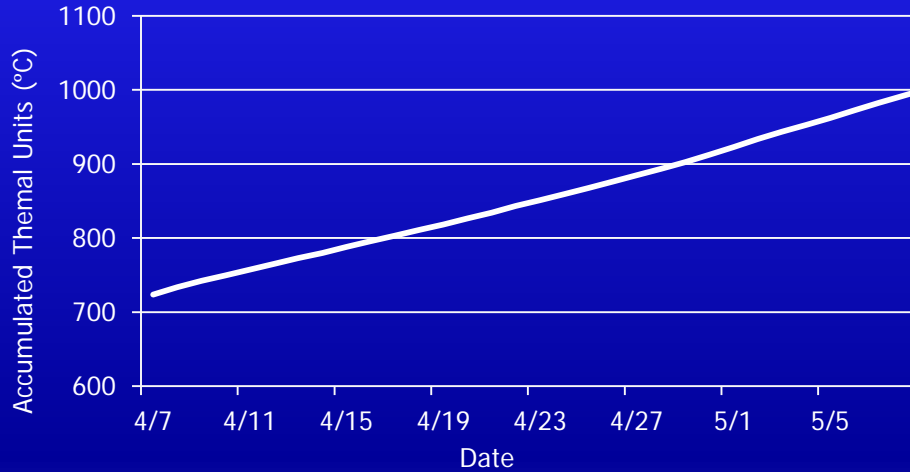
Taneum Coho Adult Stocking

150	Females (TANEUM ADULT STOCKING)
2900	Eggs/Female
0.043	% survival from egg to fry (TANEUM CREEK E2F)
0.29	% survival from fry to smolt
0.23	% survival from smolt to McNary
0.023	% survival from McNary back to McNary as adult
0.5	% survival from McNary back to Taneum Cr.
14	Adults to McNary Dam

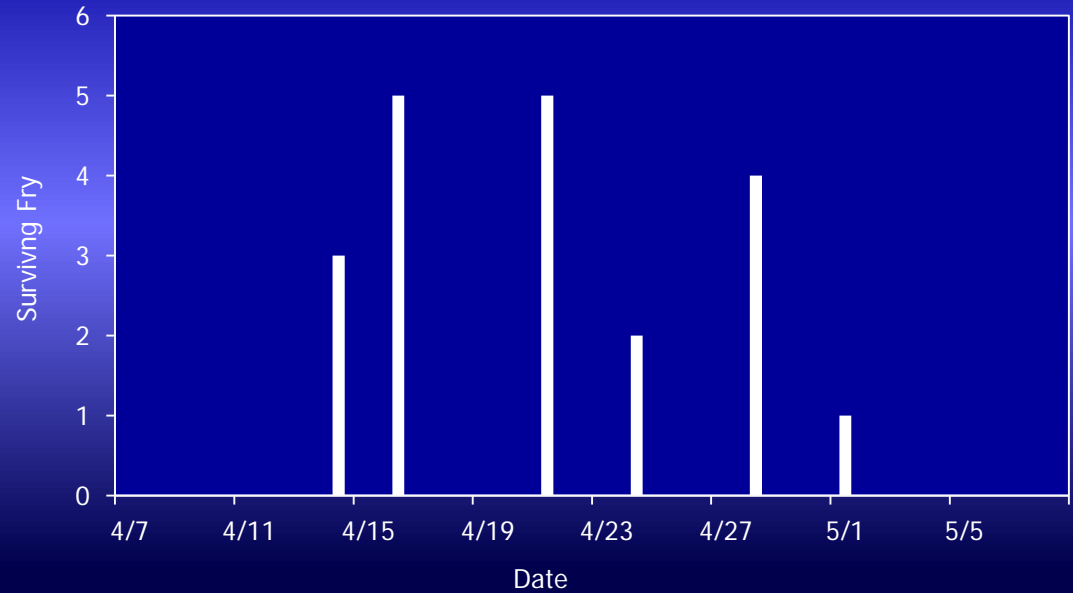
Data Provided by: Trenton DeBoer (WDFW)

Holmes Emergence and Thermal Units

Holmes Thermal Units



Holmes Emergence Timing



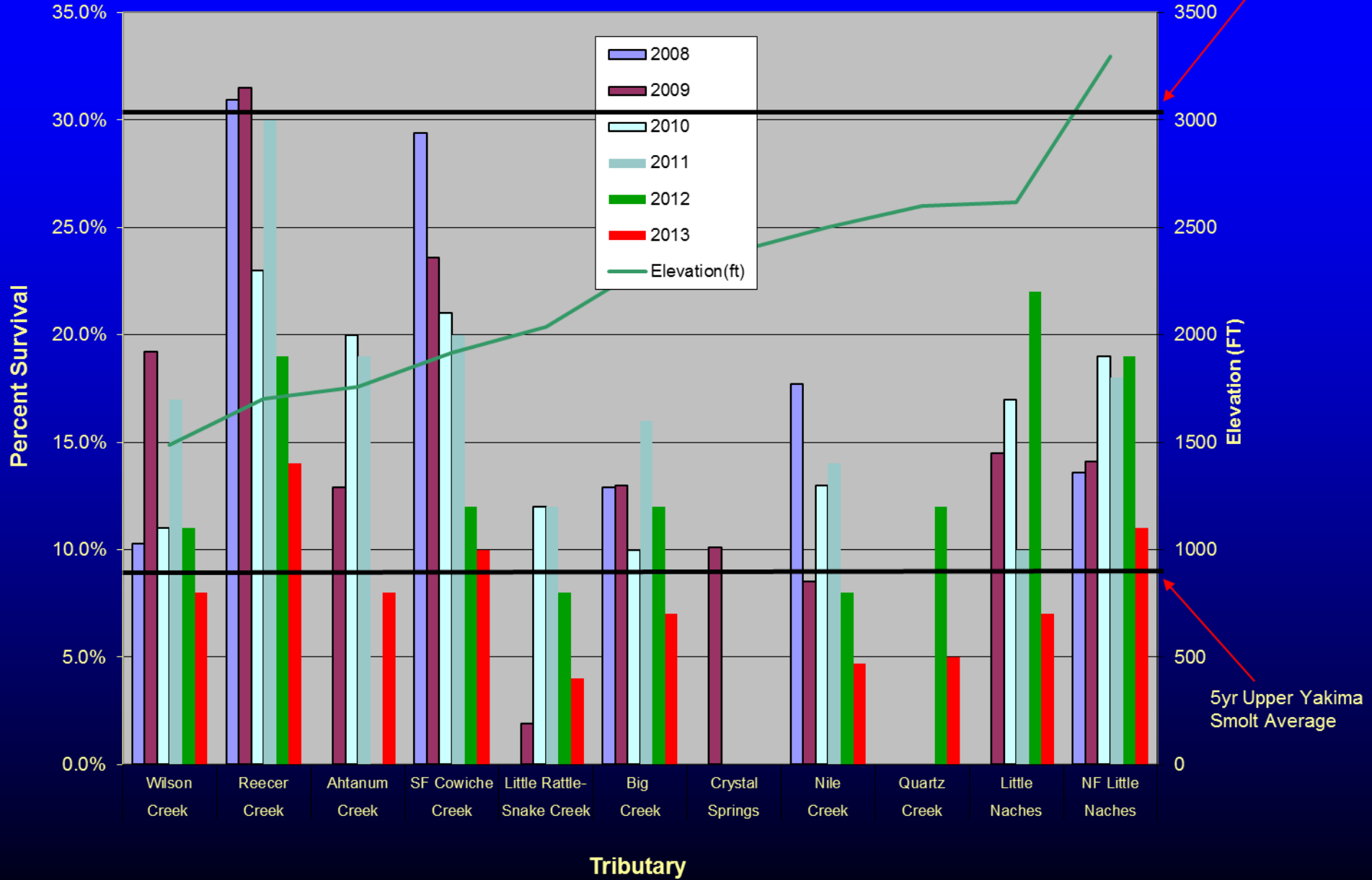
Summer Parr Plants



Summer Parr Survival To McNary Dam

5yr Naches Smolt Average

5yr Upper Yakima Smolt Average

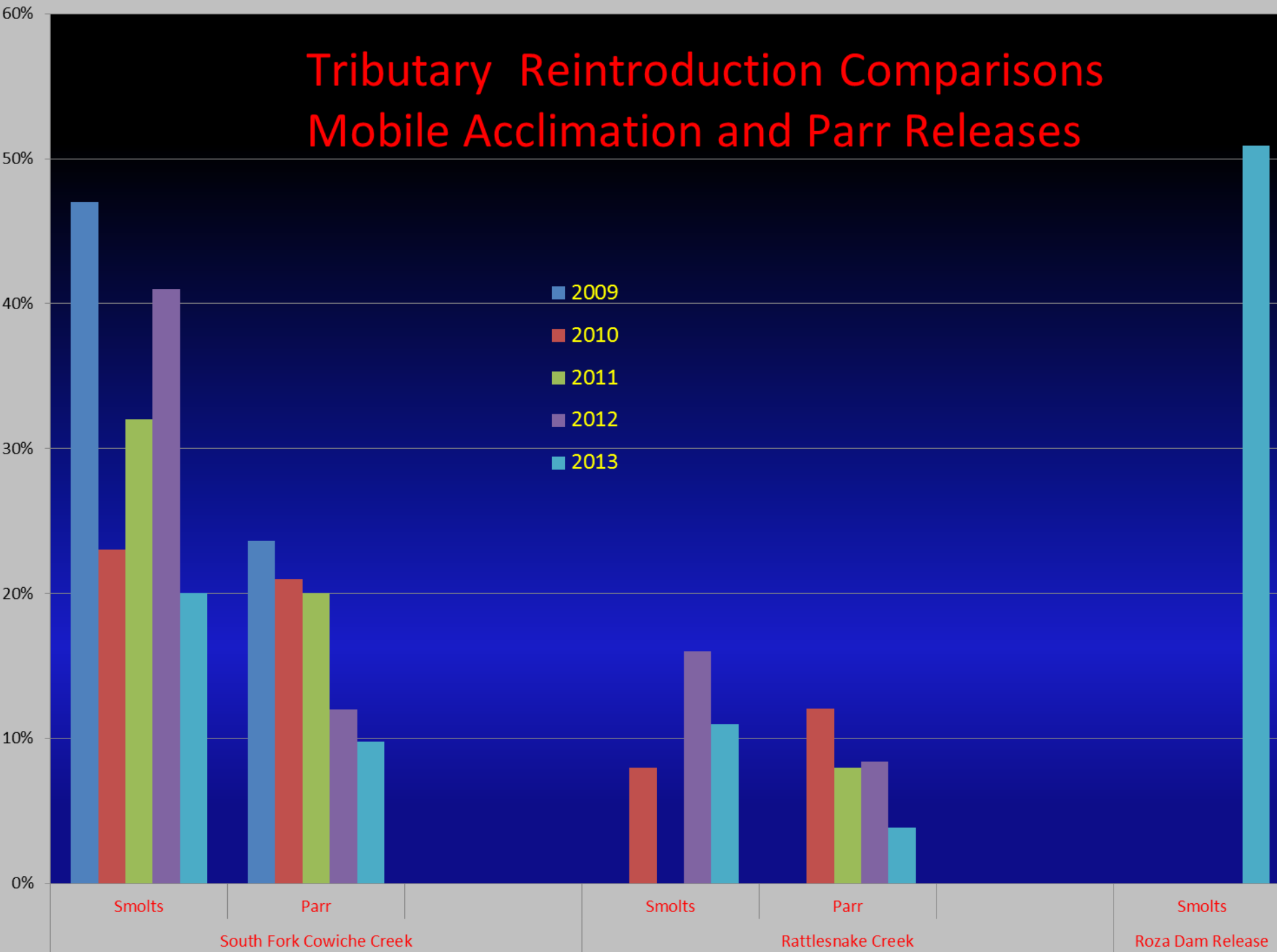


Mobile Acclimation

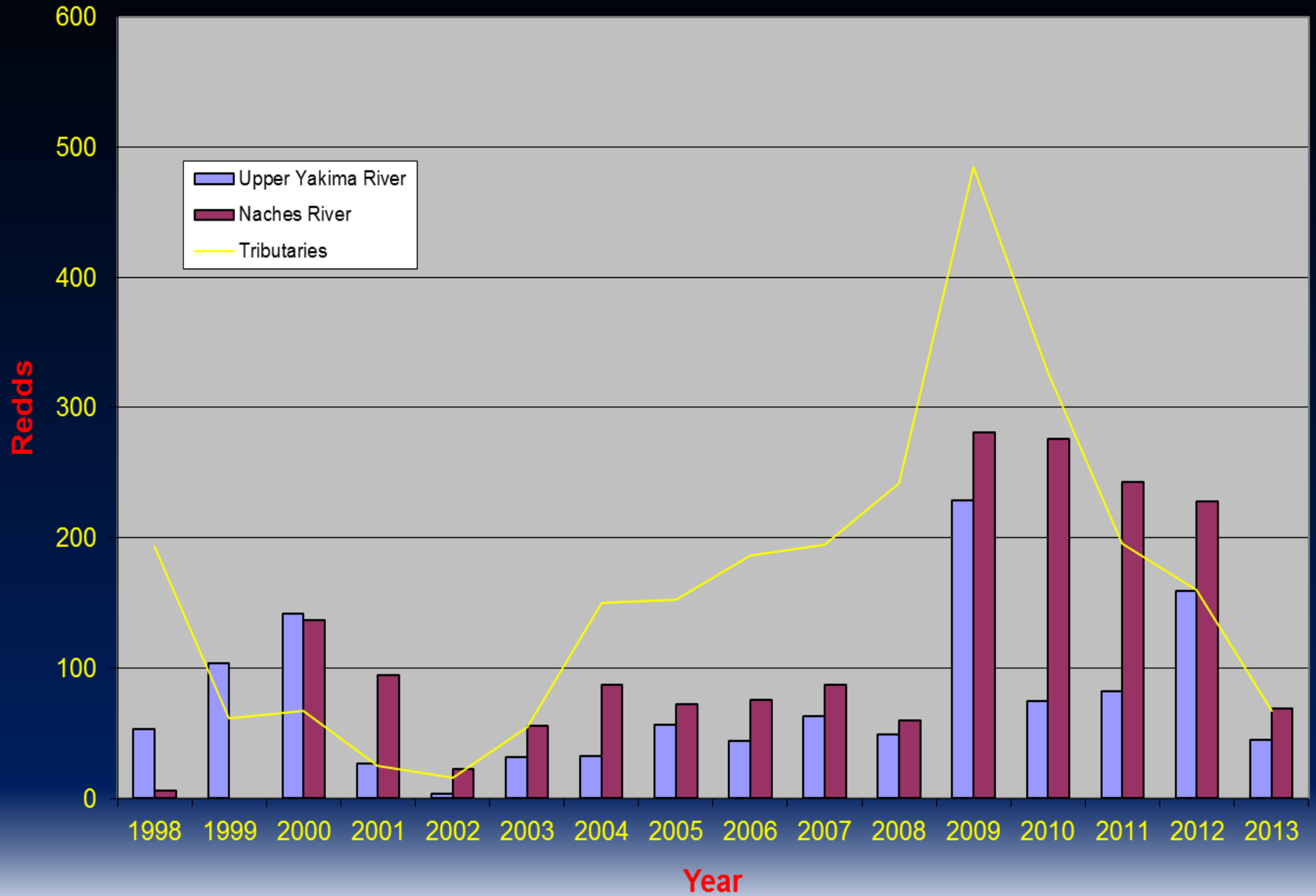


Tributary Reintroduction Comparisons

Mobile Acclimation and Parr Releases

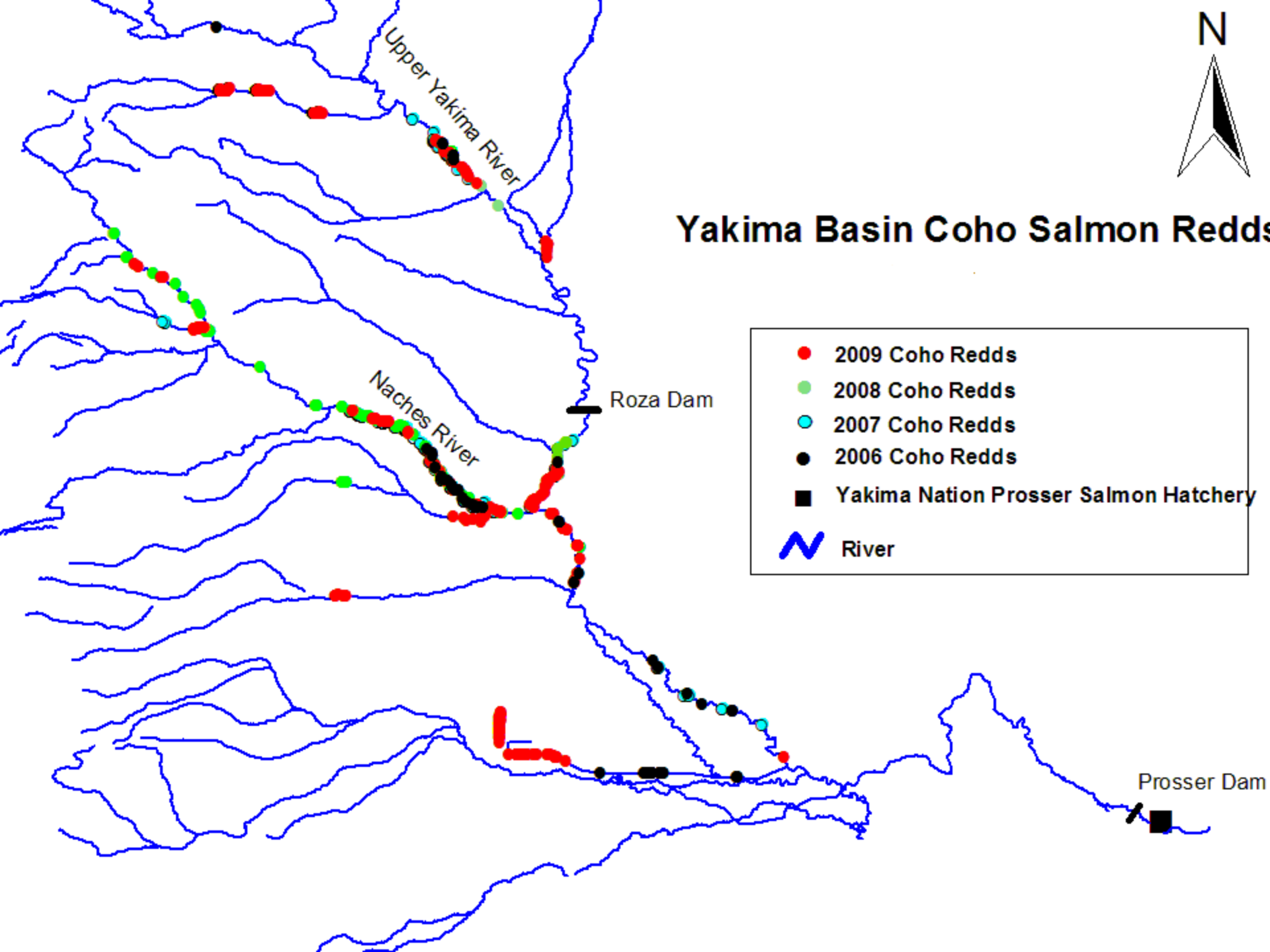


Yakima Basin Redd Counts 1998-2013





Yakima Basin Coho Salmon Redds



Taneum Creek Coho Reintroduction

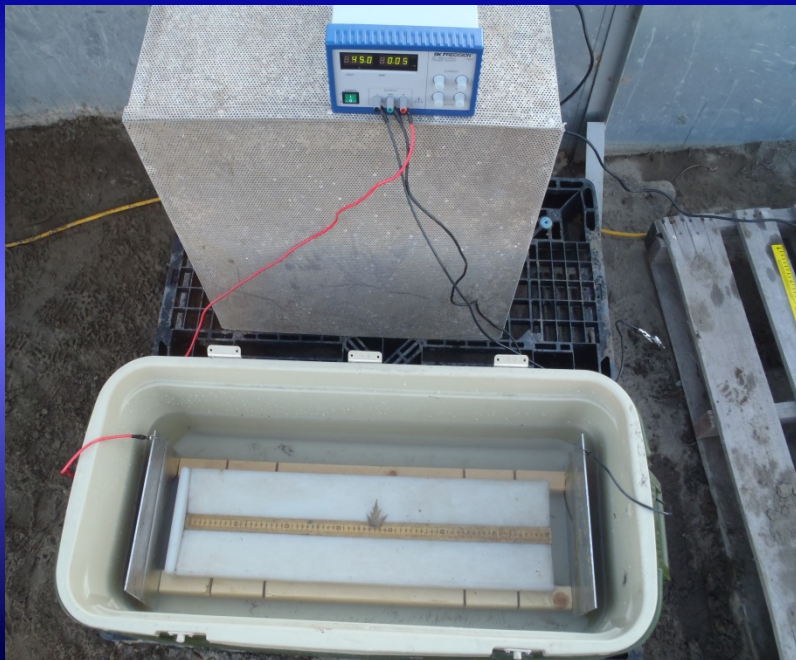
YN and WDFW cooperative Project

Coho are planted the last week of October and the first week of November in 2 consecutive days (60 per day) Maintenance Plant

- **2012**

- 120 Coho (60 Males, 60 Females) were tagged with Floy tags to differentiate Males and Females. And to separate planted coho from wild coho.
- 54 Coho redds were located spread over a large area

- **2013** – (9 females and 11 males)



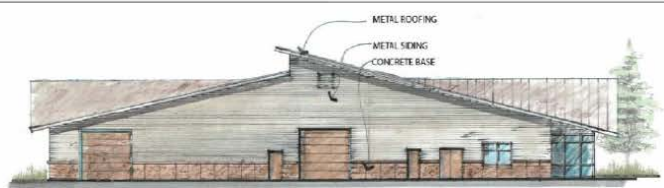
Taneum Creek Adult Coho Salmon out-planting Results

Year	Adult Females	Redds	Number of	Migration	Survival to	
			coho Pit Tagged	Year	McNary Dam	
2007	150	75	1299	2009	16%	
2008	150	50	1868	2010	10%	
2009	150	130	4515	2011	13%	
2010	150	134	1054	2012	26%	
2011	150	100	743	2013	12%	
2012	60	54	1941	2014		

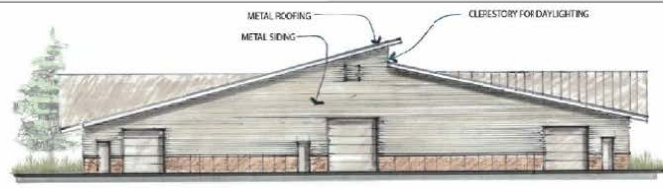
Taneum Creek Adult Returns 2013

- Bonneville- 8
- McNary- 7
- Prosser- 6
- Roza- 6
- Taneum Creek- 3
- Prosser to Prosser Smolt to Adult return
1.88%

Proposed YKFP Coho Facility



EAST ELEVATION
 3/32" = 1' - 0"



WEST ELEVATION
 3/32" = 1' - 0"



REVISED NORTH ELEVATION
 3/32" = 1' - 0"



REVISED SOUTH ELEVATION
 3/32" = 1' - 0"

REV	DATE	BY	DESCRIPTION



WARNING
 0 1/2
 IF THIS DRAWING HAS ANY
 REVISIONS, IT SHALL BE
 IN SET TO SCALE.

McMILLEN, LLC
 1401 3RD AVENUE, SUITE 100
 BENTON, ID 83702
 OFFICE: 208-342-4214
 FAX: 208-342-4218



YAKAMA NATION FISHERIES
 HOLMES RANCH HATCHERY CONCEPT DESIGN
 HATCHERY BUILDING ELEVATIONS

DESIGNED: M. REESE
 DRAWN: B. LITA
 CHECKED:
 ISSUED DATE: 3/16/12

DRAWING
AH-2
 SCALE: AS NOTED

Sign In

- Export PDF
- Create PDF
- Send Files

Adobe SendNow
 Verify your file is received. Send files online instead of email.

Select File:
 Holmes Elevationsandsketch2.pdf
 1 file / 355 KB

To...
 Type in email addresses

Send Link

Store Files

Capacity: 600,000 Coho smolt equivalents

