

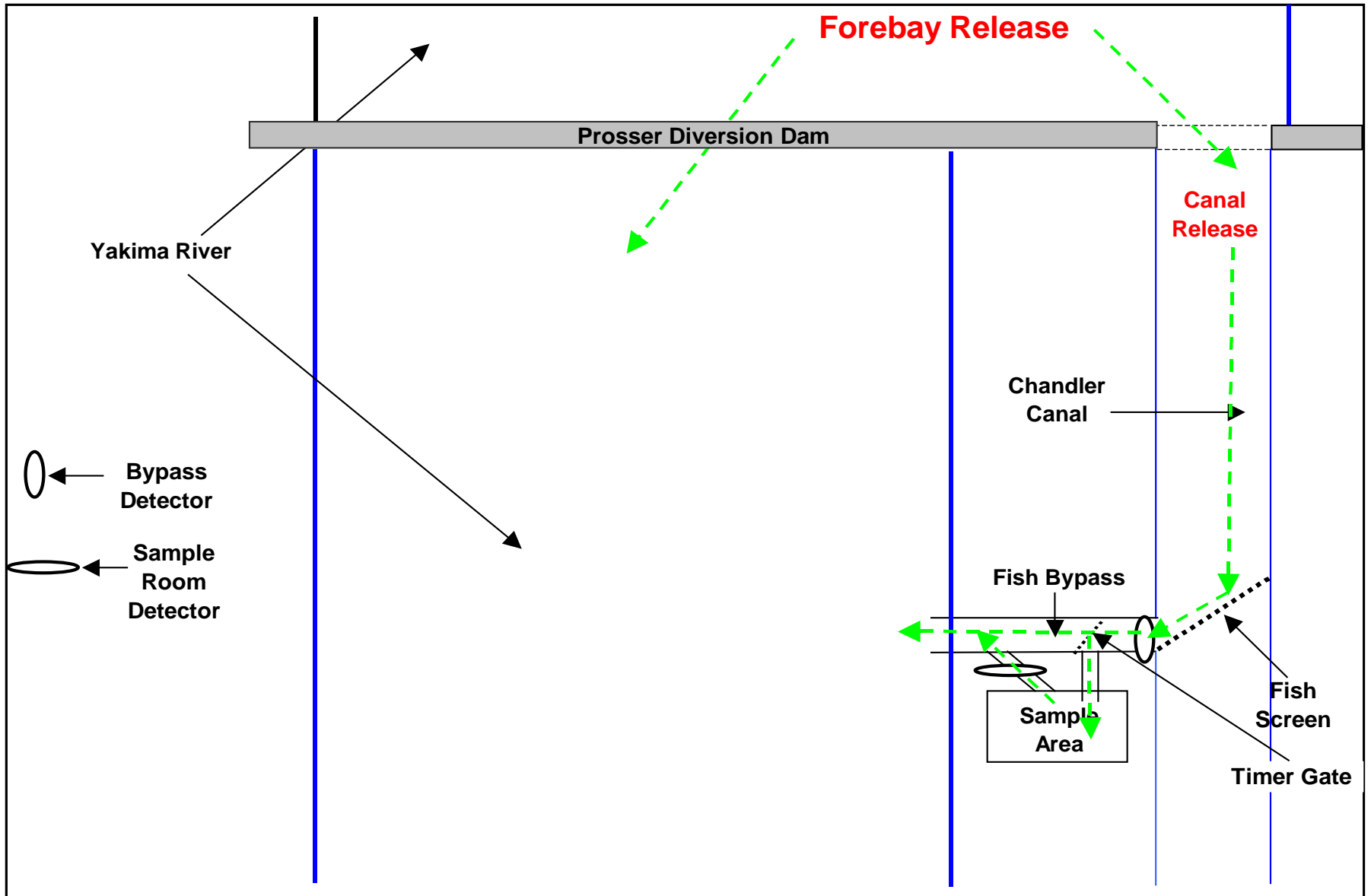
Daily Expanded Count

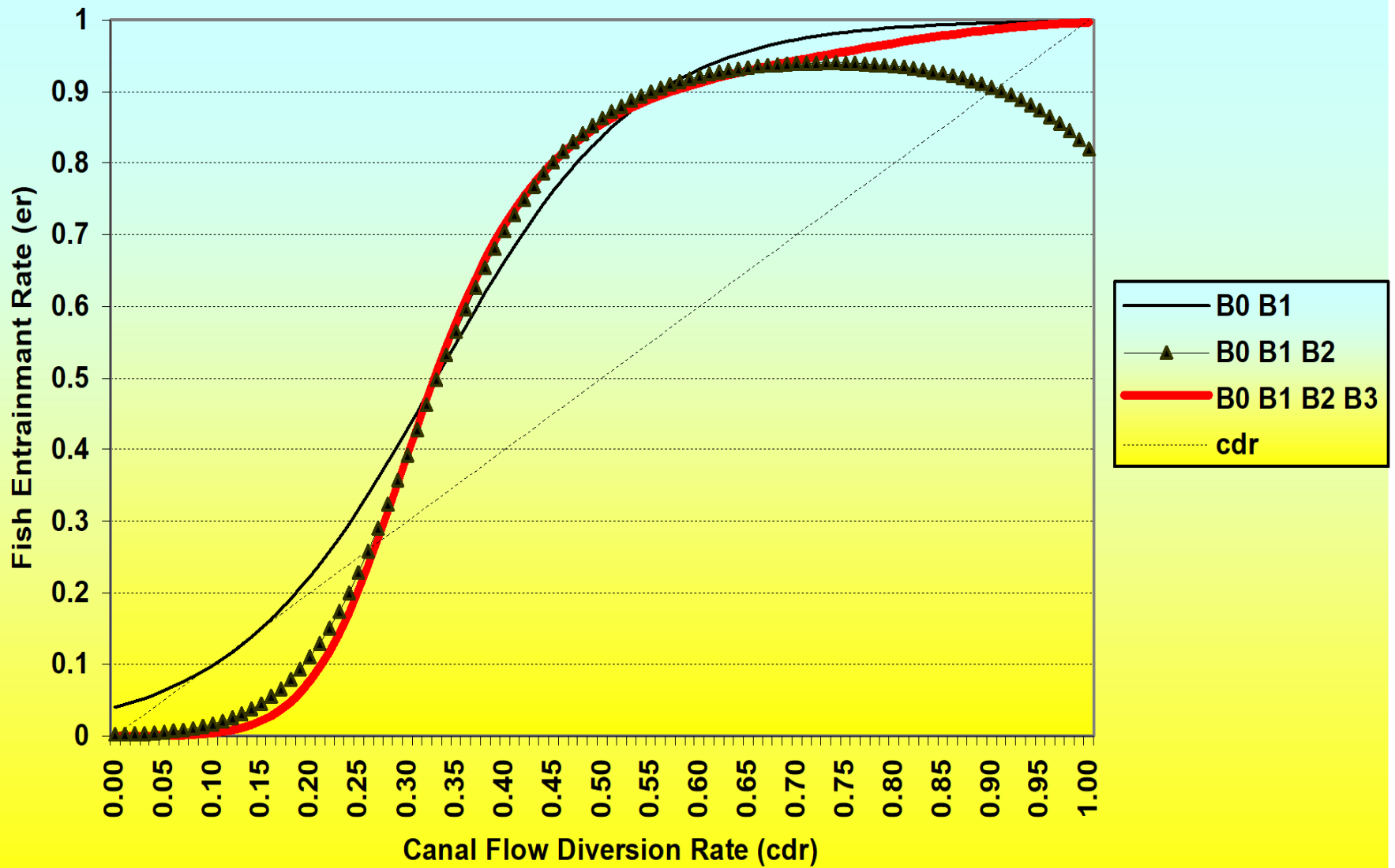
=

Daily Count of Fish in Sample

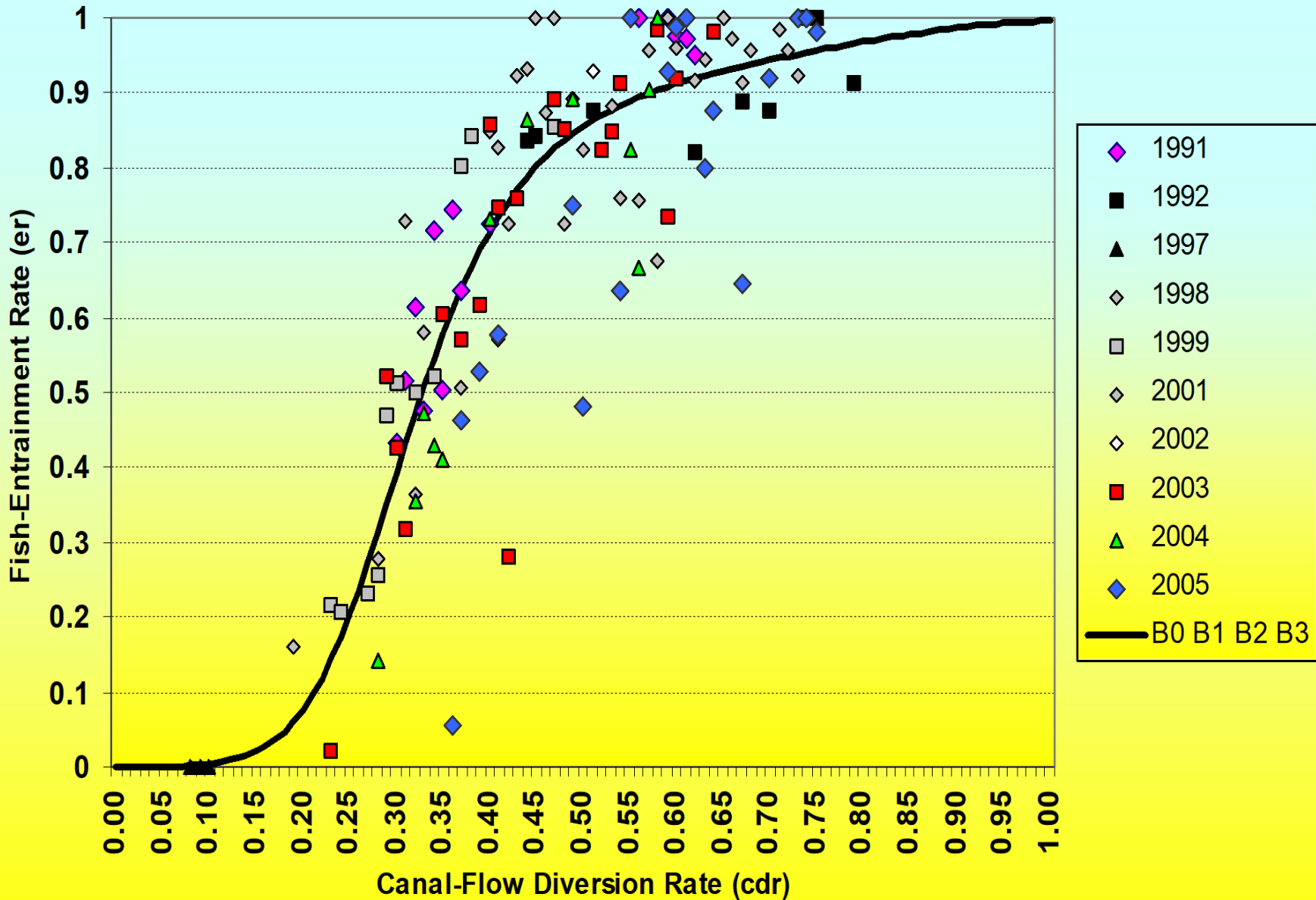
---

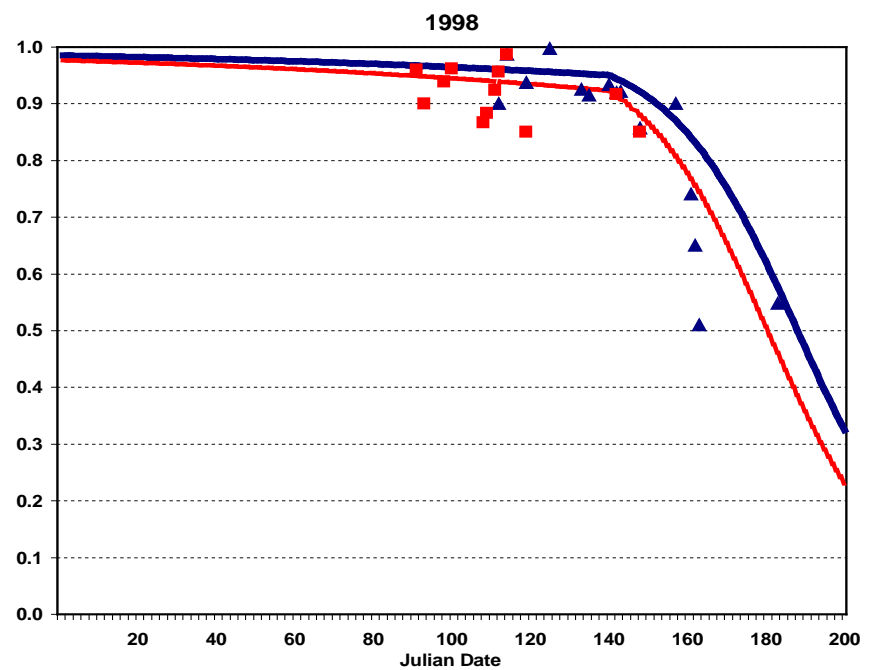
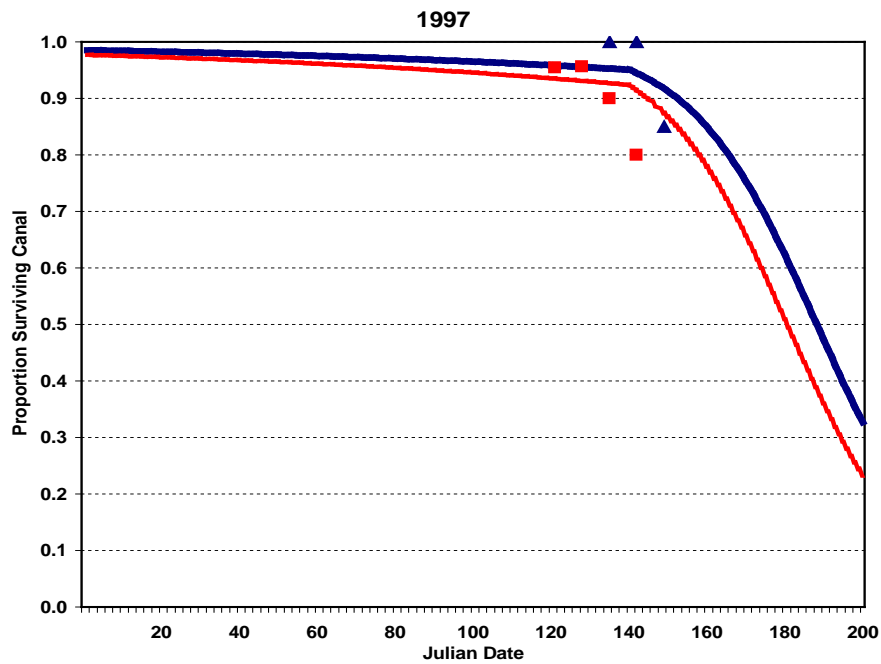
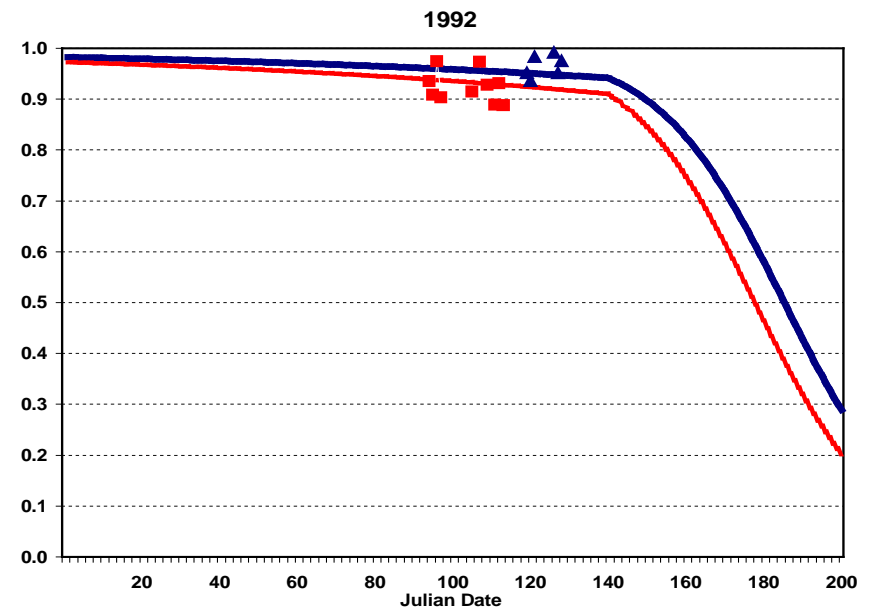
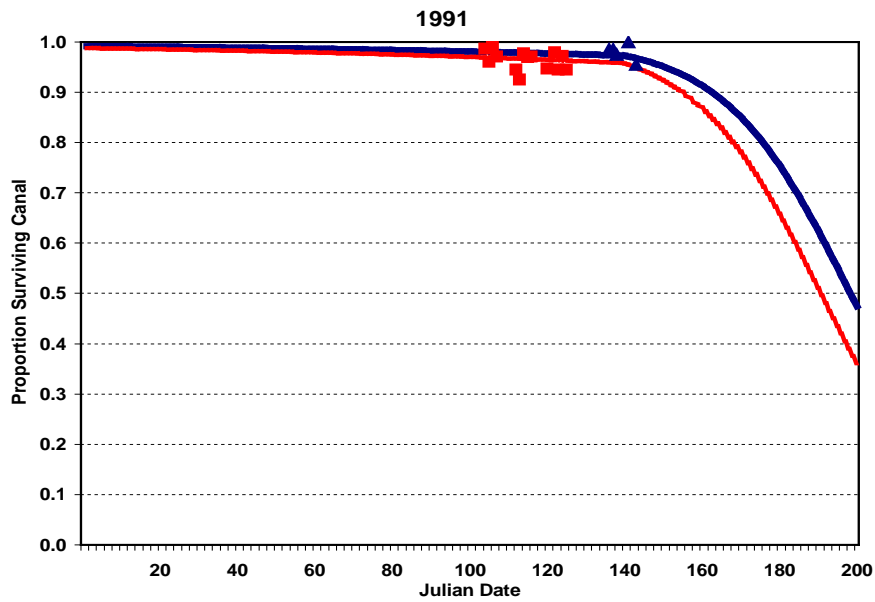
(Daily Fish Entrainment Rate) \* (Daily Canal Fish Survival Rate) \* (Daily Sample Rate)

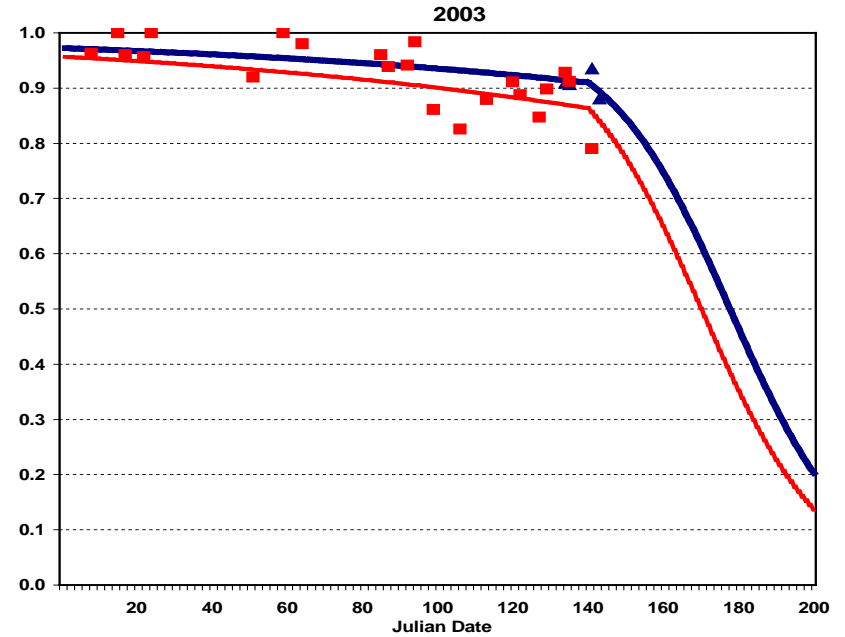
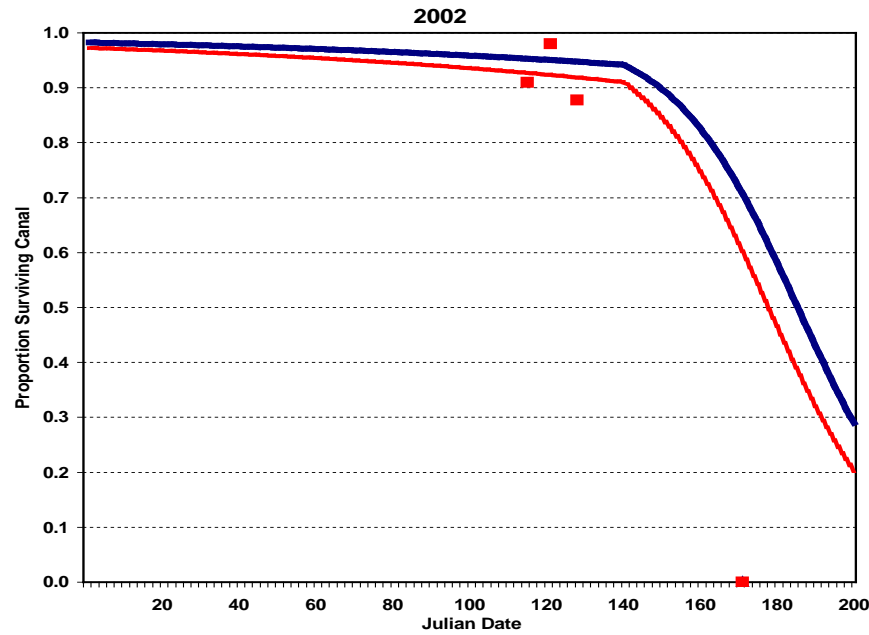
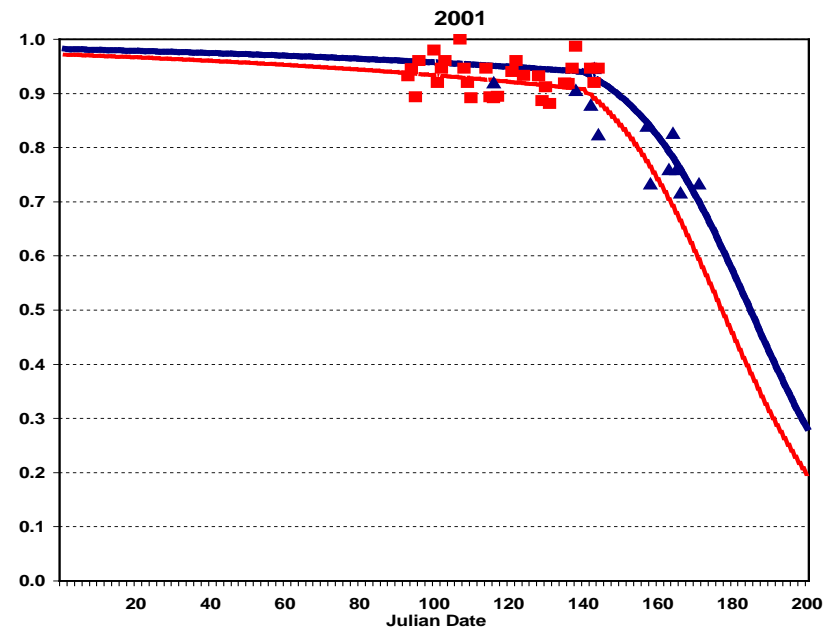
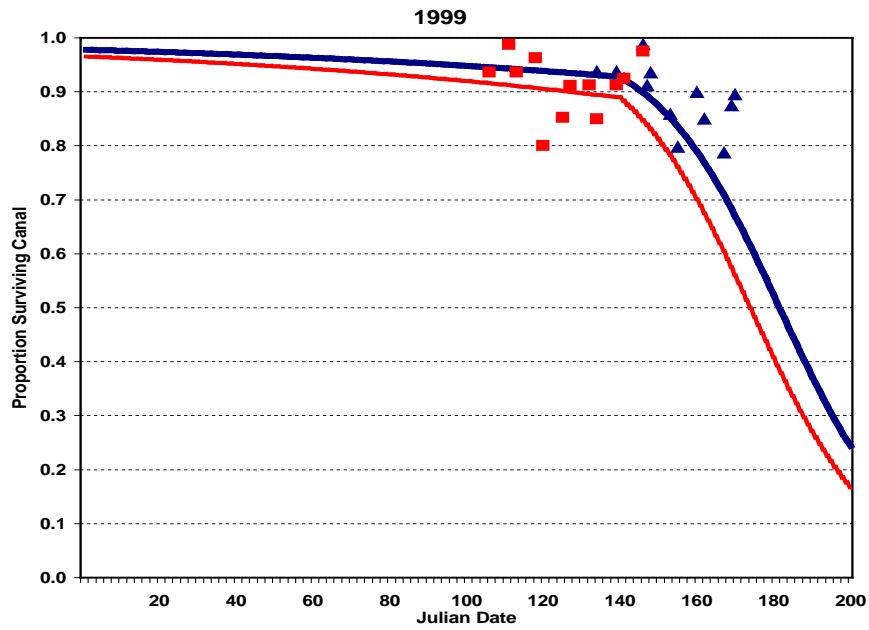


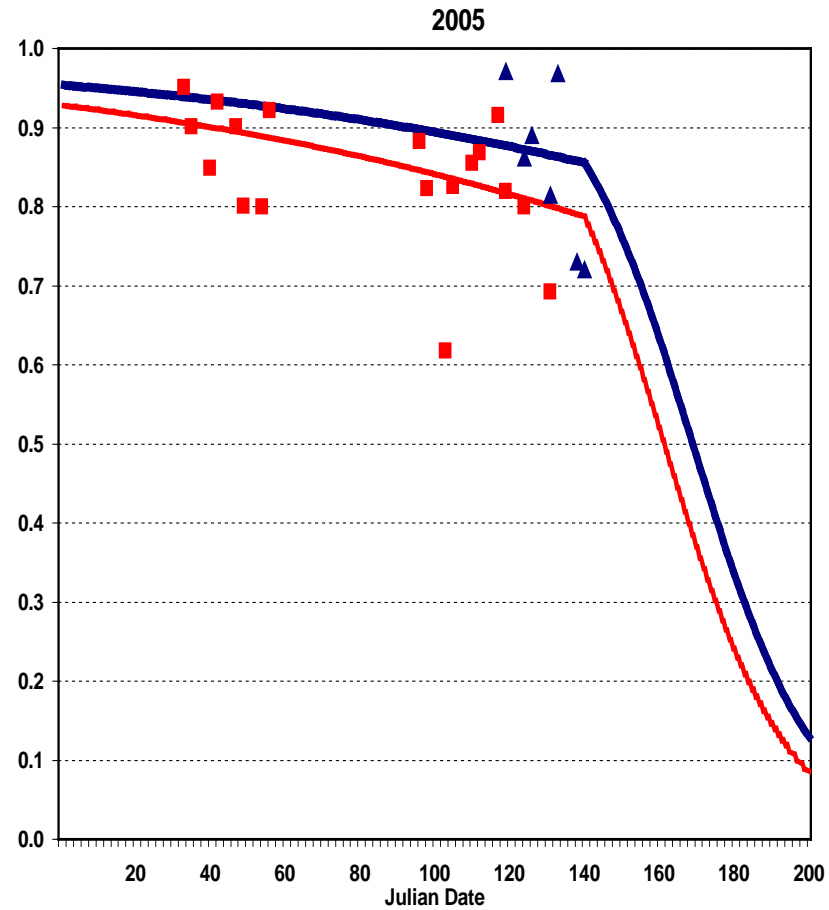
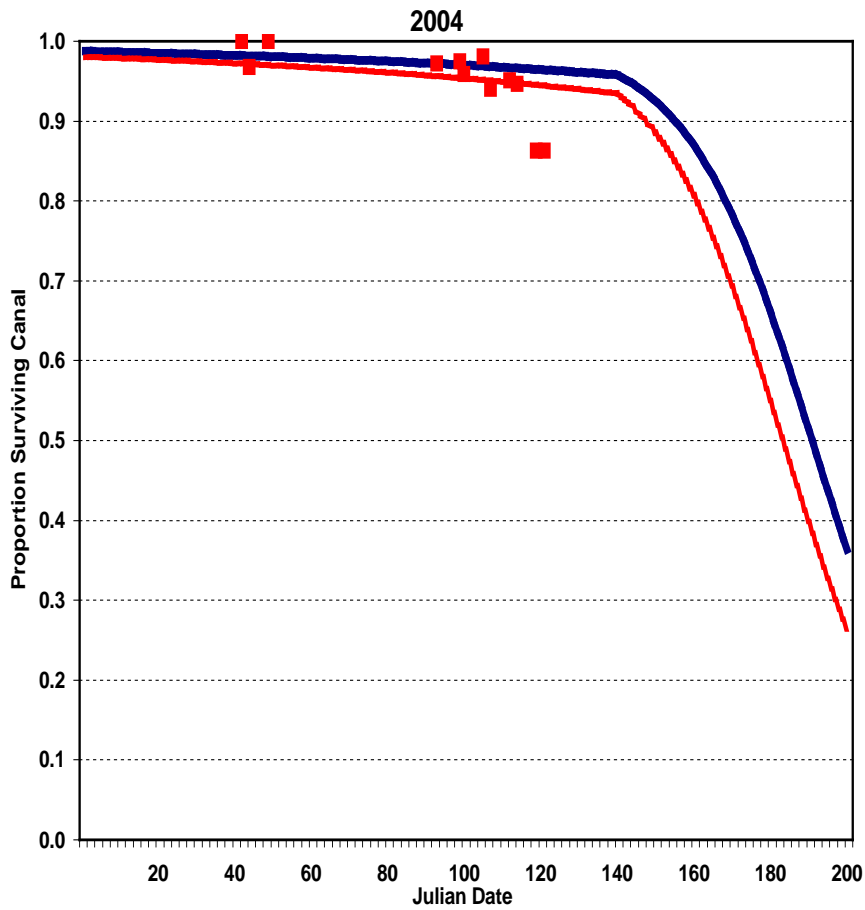


$$er = 1/\{1+\exp-[B0 + B1*cdr + B2*cdr^2 + B3*cdr^3]\}$$









## Sample Rates for Different Timer Gate Rates over Outmigration Years

Timer Gate Rate Measure	1991 - 2002	2003 - 2005	All Years
<b>0.05</b> Days*		2	2
Detections**		987	987
Rate***		<b>0.0750</b>	<b>0.0750</b>
<b>0.10</b> Days*	4		4
Detections**	1522		1522
Rate***	<b>0.0585</b>		<b>0.0585</b>
<b>0.20</b> Days*	28		28
Detections**	10948		10948
Rate***	0.1471		0.1471
<b>0.25</b> Days*	3		3
Detections**	15		15
Rate***	<b>0.0667</b>		<b>0.0667</b>
<b>0.33</b> Days*	<b>179</b>	<b>214</b>	<b>393</b>
Detections**	<b>15582</b>	<b>31558</b>	<b>47140</b>
Rate***	<b>0.2267</b>	<b>0.2294</b>	<b>0.2285</b>
<b>0.50</b> Days*	<b>107</b>	<b>39</b>	<b>146</b>
Detections**	<b>11017</b>	<b>1357</b>	<b>12374</b>
Rate***	<b>0.3260</b>	<b>0.2719</b>	<b>0.3201</b>
<b>0.75</b> Days*	4		4
Detections**	387		387
Rate***	<b>0.6718</b>		<b>0.6718</b>
<b>1.00</b> Days*	<b>73</b>	<b>26</b>	<b>99</b>
Detections**	<b>3082</b>	<b>850</b>	<b>3932</b>
Rate***	<b>0.9504</b>	<b>0.9776</b>	<b>0.9563</b>

\* Number of Detection Days

\*\* Total Detections over those Days

\*\*\* Estimated Sample Rate



## Sample Rates for Different Timer Gate Rates over Outmigration Years

Timer Gate Rate Measure	1991	1992	1997	1998	1999	2000	2001	2002	2003	2004	2005
<b>0.05</b> Days* Detections** Rate***											2 987 <b>0.0750</b>
<b>0.10</b> Days* Detections** Rate***	2 6 <b>0.1667</b>						2 1516 <b>0.0580</b>				
<b>0.20</b> Days* Detections** Rate***		1 2 0.0014						27 10946 0.1472			
<b>0.25</b> Days* Detections** Rate***						3 15 <b>0.0667</b>					
<b>0.33</b> Days* Detections** Rate***	6 565 <b>0.3239</b>	25 2208 <b>0.2591</b>	1 72 <b>0.1250</b>	29 1845 <b>0.2575</b>	35 2110 <b>0.2711</b>	39 4055 <b>0.2654</b>	8 3789 <b>0.1008</b>	36 938 <b>0.2804</b>	53 16787 <b>0.2223</b>	100 12079 <b>0.2286</b>	61 2692 <b>0.2767</b>
<b>0.50</b> Days* Detections** Rate***	6 1178 <b>0.4015</b>			8 139 <b>0.3741</b>	41 2303 <b>0.4221</b>	25 4427 <b>0.3924</b>	22 2958 <b>0.1197</b>	5 12 <b>0.3333</b>	24 573 <b>0.2600</b>		15 784 <b>0.2806</b>
<b>0.75</b> Days* Detections** Rate***	4 387 <b>0.6718</b>										
<b>1.00</b> Days* Detections** Rate***			4 122 <b>0.7787</b>			6 604 <b>0.8725</b>	28 2146 <b>0.9804</b>	35 210 <b>0.9667</b>	26 850 <b>0.9776</b>		

\* Number of Detection Days

\*\* Total Detections over those Days

\*\*\* Estimated Sample Rate

Morts not run through sample detector

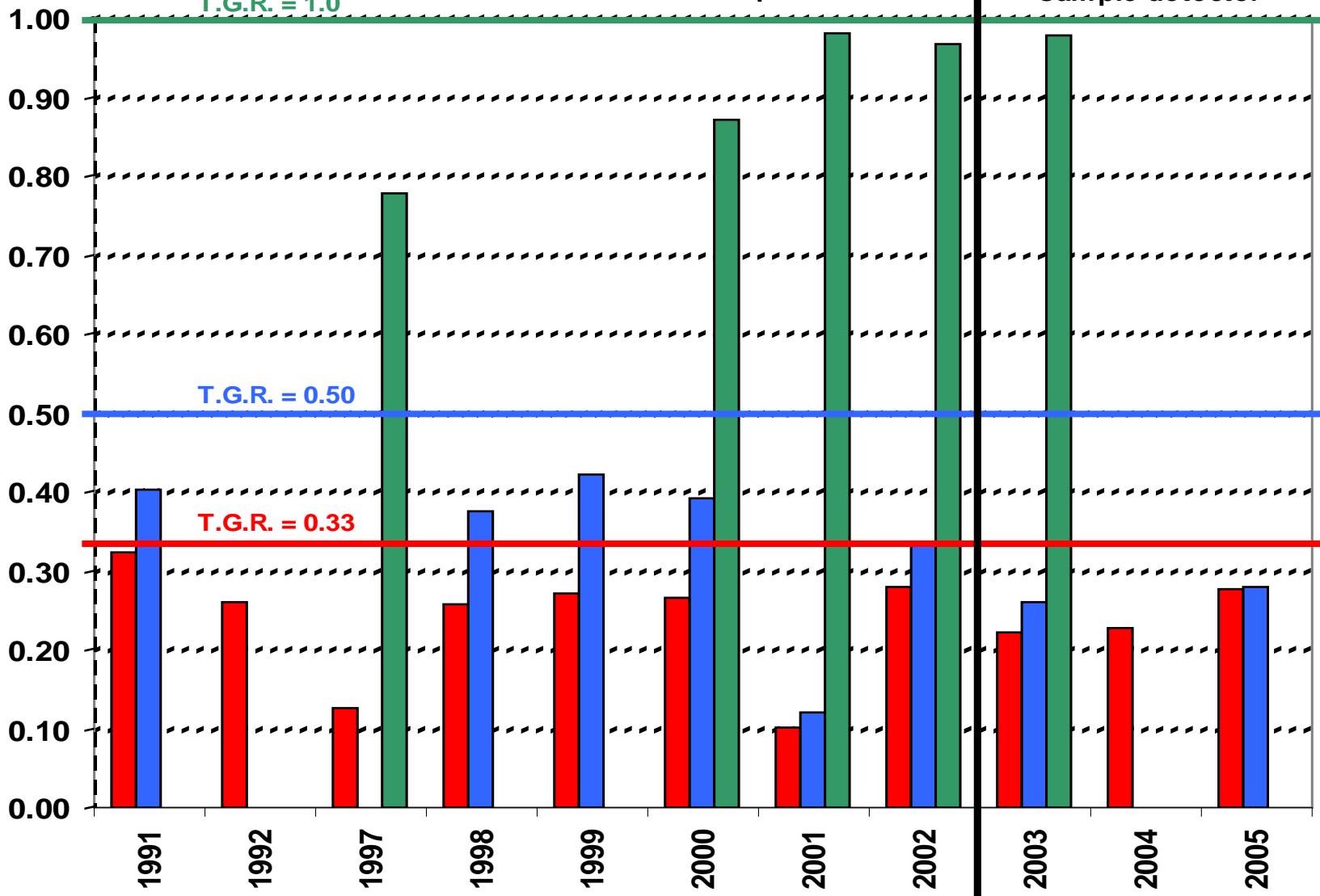
Morts run through sample detector

T.G.R. = 1.0

T.G.R. = 0.50

T.G.R. = 0.33

Estimated Sample Rate



Outmigration Year

■ Timer Rate = 0.33 ■ Timer Rate = 0.50 ■ Timer Rate = 1.00