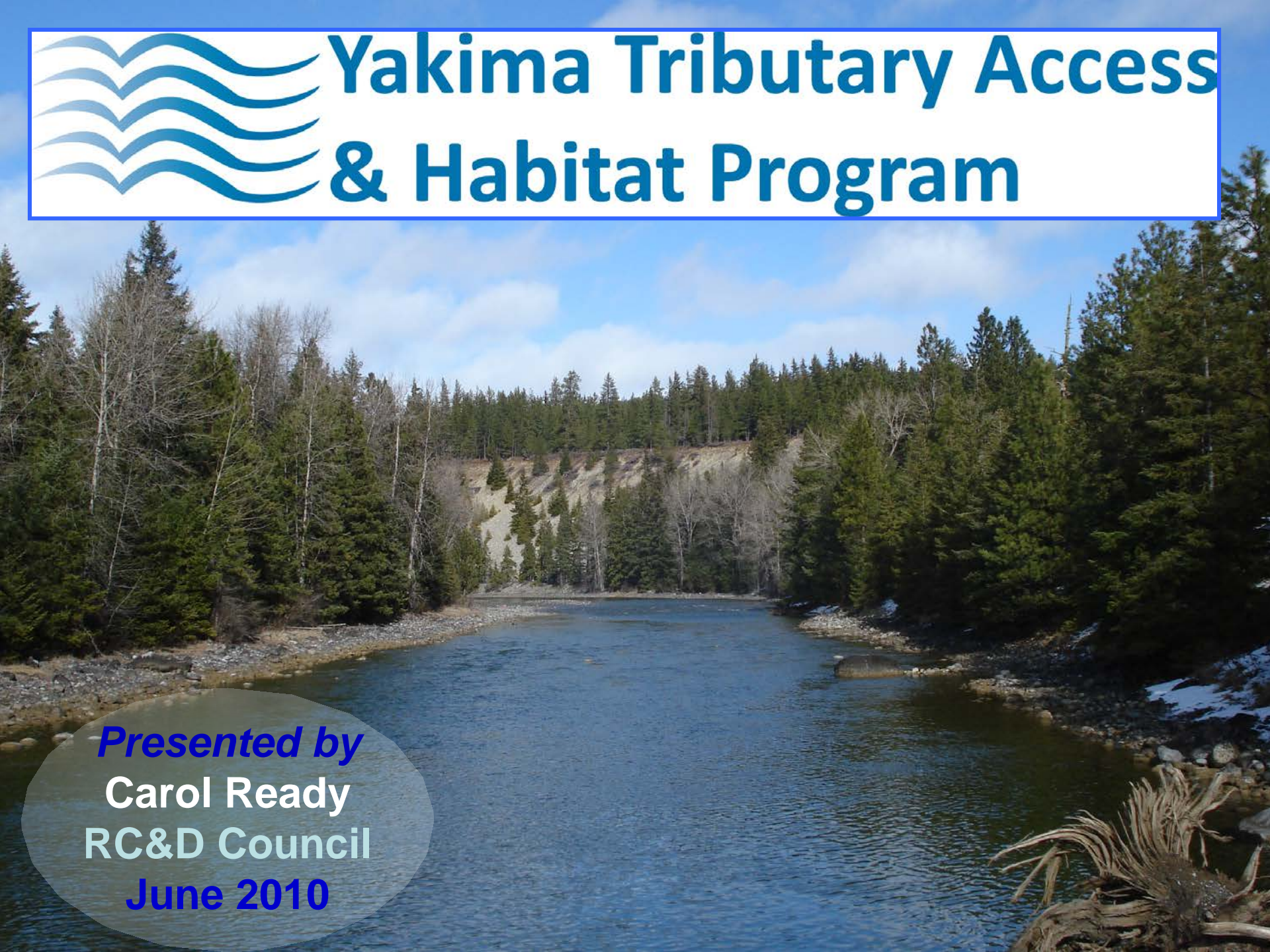




Yakima Tributary Access & Habitat Program



Presented by
Carol Ready
RC&D Council
June 2010

“Y-TAP”



Goals:

- Restore Salmonid **Access**
- **Screen** Diversions &
- Enhance **Habitat** Quality



Evolution

- 2000: Steelhead Listing + Workshop
 - Desire to Assist Irrigators / Landowners
- 2001: BPA Action Plan + Solicitation
- 2002: Grant Agreements + Projects

Cooke Siphon, Currier Siphon

Diversion 14, Coleman

Taneum, Teanaway

YTAHP



**KCCD
NYCD**



KCT



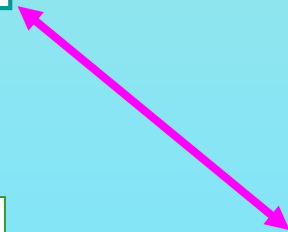
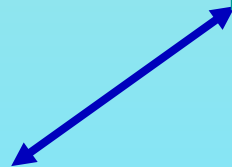
WDFW



MC FEG



YN




Strategic Plan




- Tributary Assessment (260 miles)
- Early Projects + Prioritized Projects
- Secured Permit Specialist ([Wizard](#))
- Engineering Capacity
 - Conservation Districts + A&E Firms
- Implementation Grants
- Monitoring (up & down; pre & post)

Funding

- **BPA** ~\$7 million since FY0
 - **SRFB** # grants total ... 02
 - **WCC** Prof ... grant
 - **WCC** ... grant, \$555,425
 - **NRCS**
 - **NFWF** - ... 5,000
 - **Conveyance** ... Ref 38, \$1,110,200
 - **Ecology** – Water quality, flood, \$600,000
 - **Landowner contributions** (cash and in-kind)
- 

2002-2008 Projects



- **69 Projects**
- **28 Barriers Removed**
 - **Dams, Levees, Culverts**
- **49 Screens**
- **23 Riparian Restorations**
- **3 Siphons**

Metrics

- **≥ 88 cfs Screened (pump, gravity)**
- **27,000 AF Screened**
- **26 Miles Habitat Opened**
- **60 Rock Weirs**
- **35 LWD (root wads)**
- **28 Acres of Riparian Planted**

YTAHP Projects



- **Kittitas County Conservation District**
 - Jack & Indian Creek Culverts
- **Kittitas Conservation Trust**
 - Taneum Creek Passage @ Bruton
- **North Yakima Conservation District**

Partners



- YTAHP: **KCCD**, WDFW and KCT
- Kittitas County
- USFS
- USFWS
- American Forest Resources
- Western Federal Lands Hwy Division
- **\$682,500**

Jack Creek Culvert



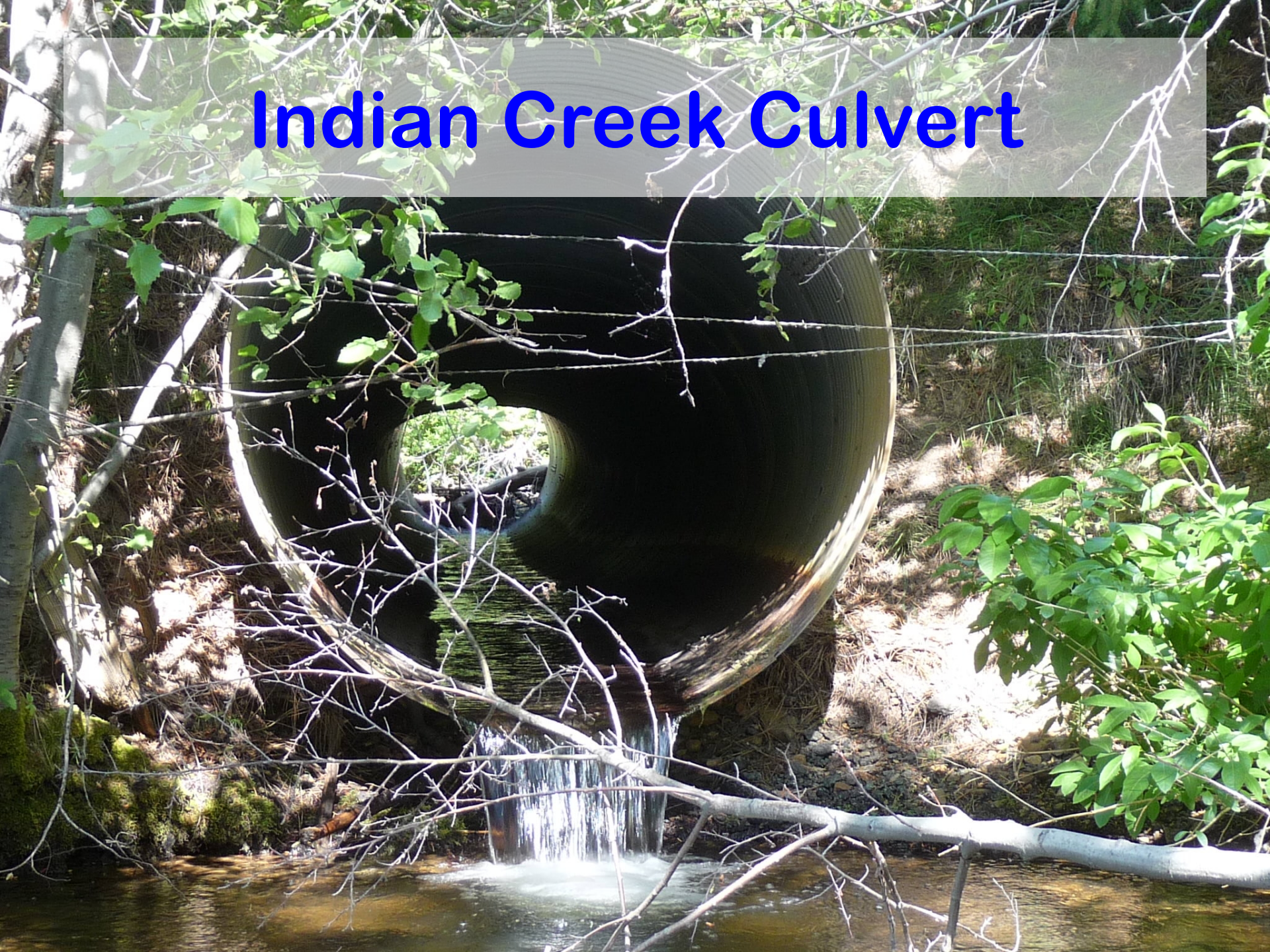
Jack Creek ~ Fish Salvage



Jack Creek Complete



Indian Creek Culvert



Indian Creek Culvert



Indian Creek Culvert

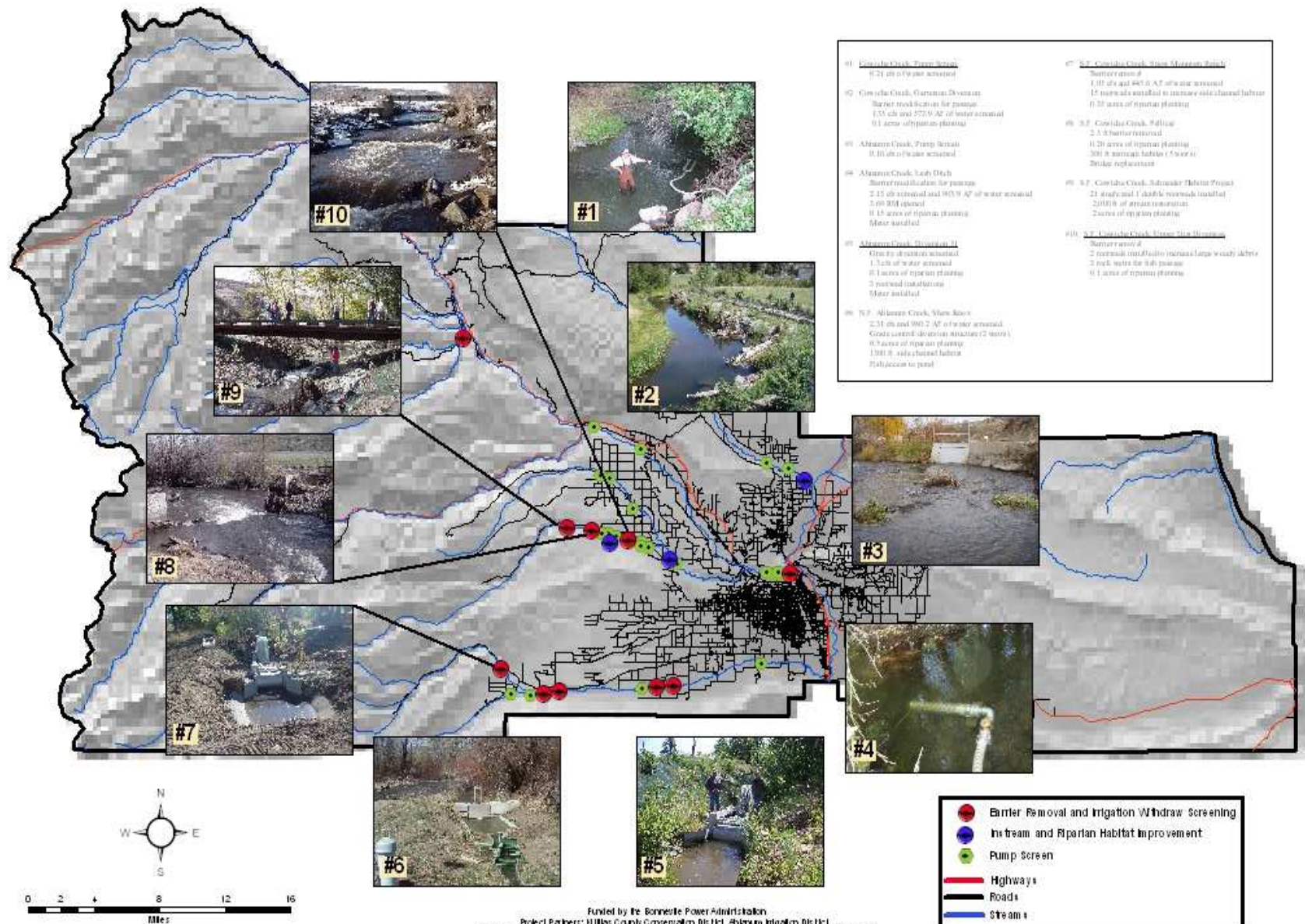


Revegetation





North Yakima Conservation District Yakima Tributary Access and Habitat Program



Run by the Bonneville Power Administration
Project Partners: Hillas County Conservation District, Anasazi Irrigation District,
South Central Washington Resource Conservation Development Council, Hill Bar Conservation Trust,
MHColumbia Riparian Enhancement Group, and Washington Department of Fish and Wildlife.



NYCD – Upper Lust, Cowiche



Schneider, Cowiche Creek

Bruton Diversion, Taneum Creek



Bruton – High Flow



Cle Elum ELJs



Reecer Creek Floodplain



City of Ellensburg

City of Ellensburg

~ 50 acres

Flood Management

Habitat

Recreation

Educational Opportunities

(K-12, CWU)

Carrier Creek Siphon – 2009



Carrier Creek Siphon – 2009



Carrier Creek Siphon – 2009

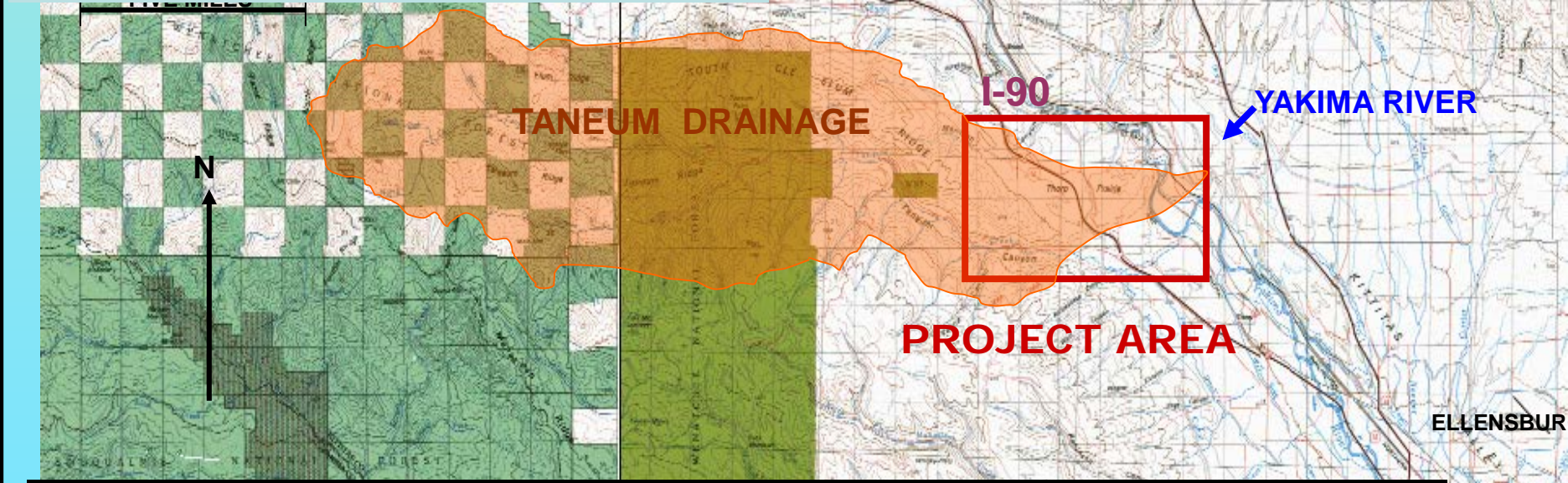
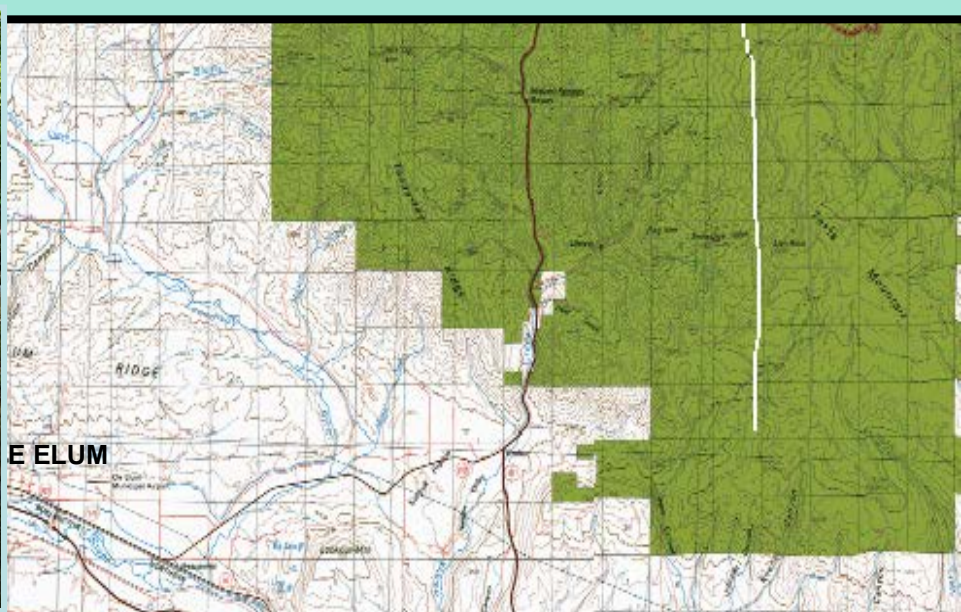


Cooke Creek Siphon – 2003



**Q
&
A**





The Taneum Creek Watershed drains 83 square miles of Federal, State and Private lands. Taneum Creek has a confluence with the Yakima River at River Mile 165.









New Bruton Screen



