

# Taneum Creek PIT Tag Interrogation Site



Pat Monk  
Tom Desgroseillier  
USFWS, Mid-Columbia Fishery Resource Office



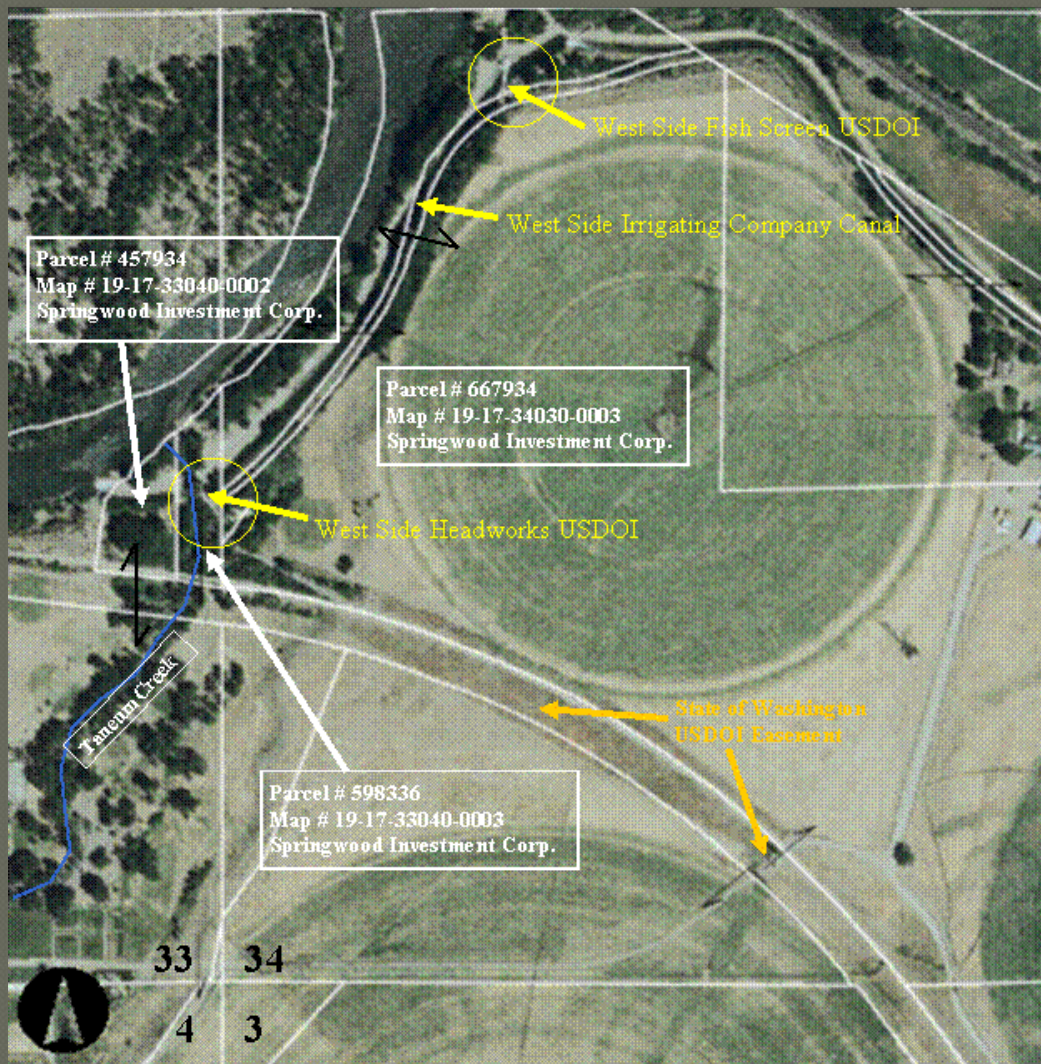
David Lind,  
Yakama Nation Fisheries YKFP



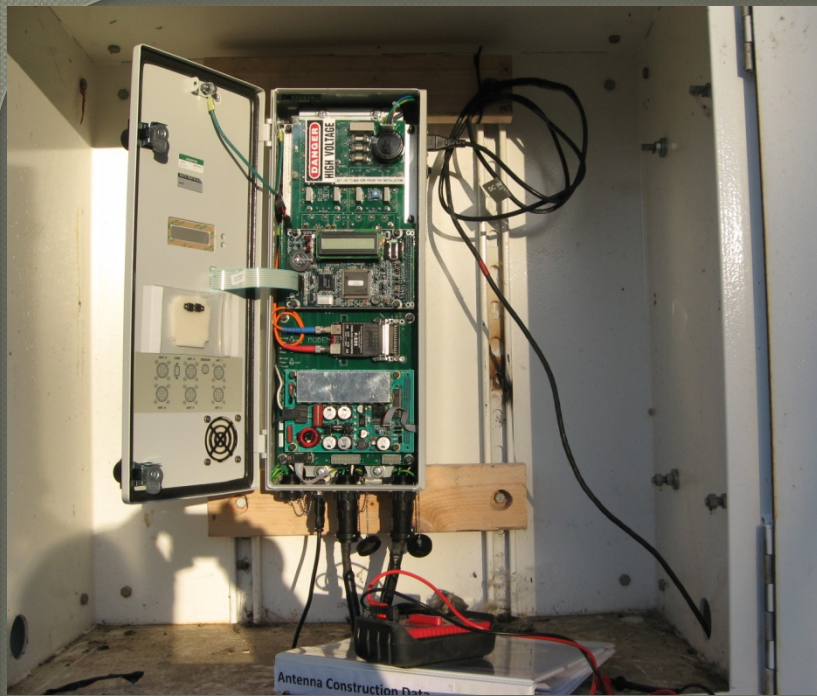
# My Objective:

Be able to monitor fishery restoration efforts in Taneum Creek, and communicate the results to managers and the public.

# West Side Irrigating Company Headworks and Fish Screen Location and Vicinity









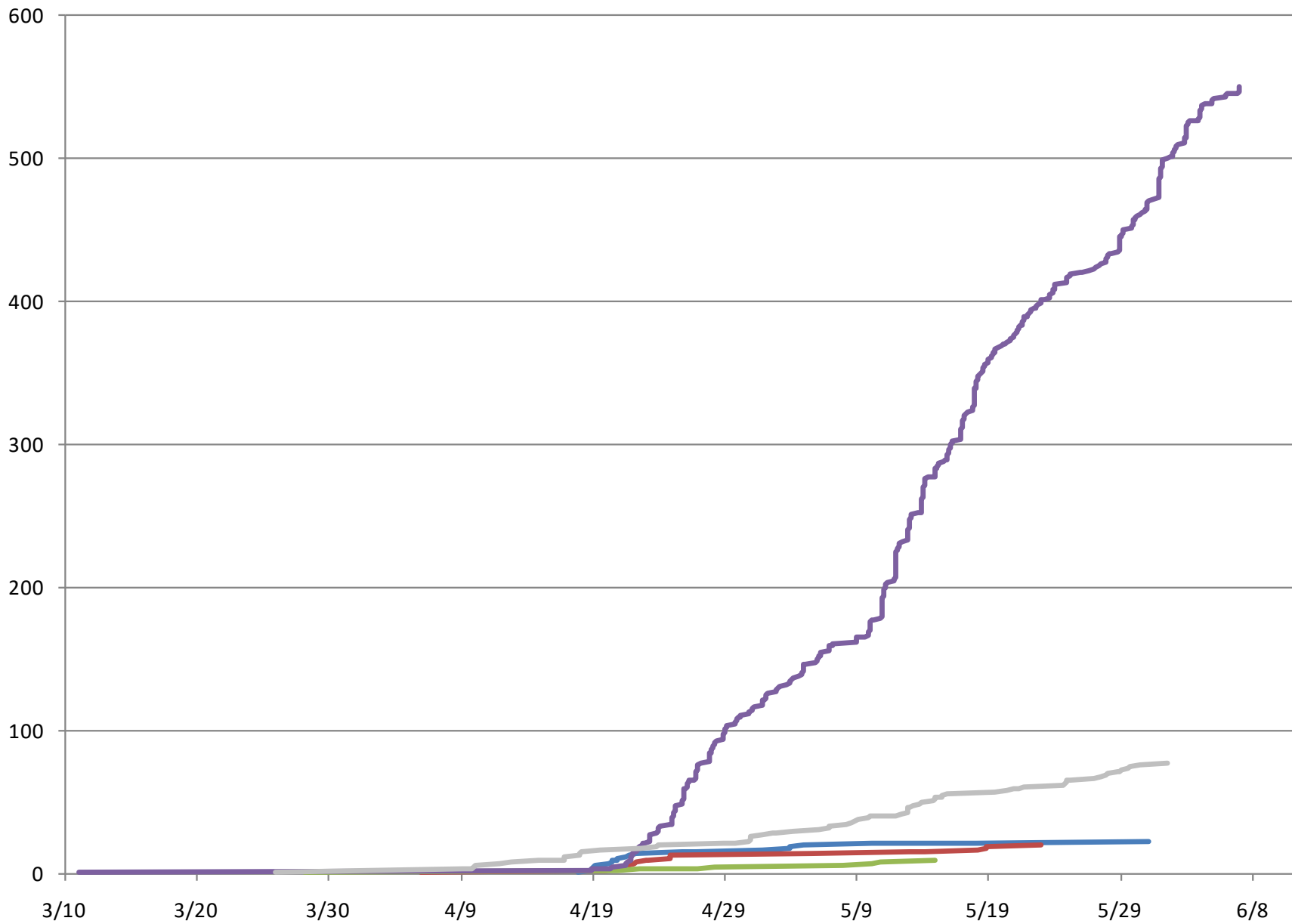
# YKFP PIT Tagging

- Adults at Roza, steelhead and others
- Juvenile *O. mykiss* in Taneum Creek, EIT
- Juvenile coho in Taneum Creek



- 
- PIT Tag reader functional February 19, 2010
  - Minor tuning by re-winding cables
  
  - What's been going on?





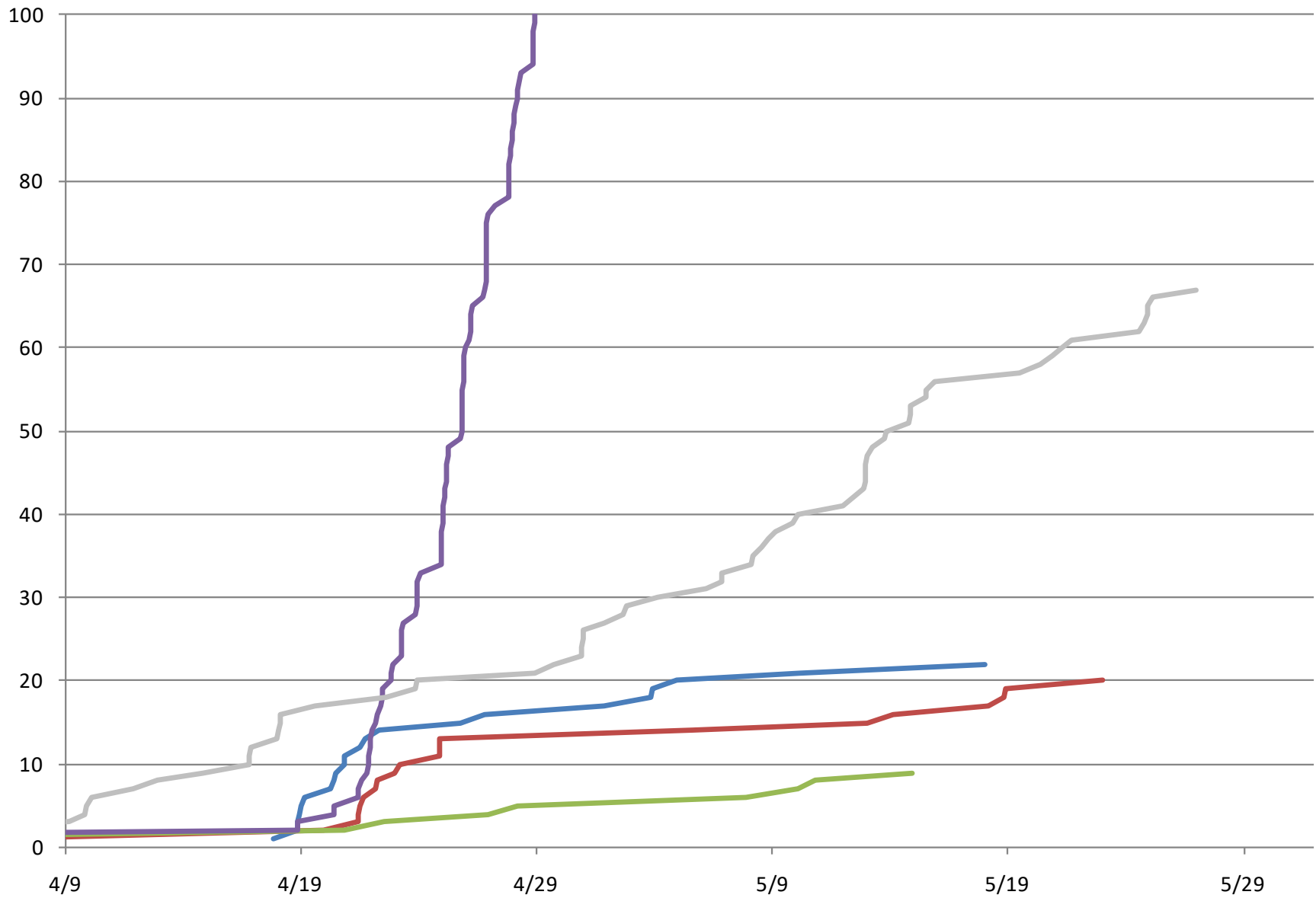
— O mykiss Fall 2008

— O mykiss Fall 2009

— Coho Fall 2008

— Coho Fall 2009

— Steelhead Adults at Roza Spring 2010



— O mykiss Fall 2008

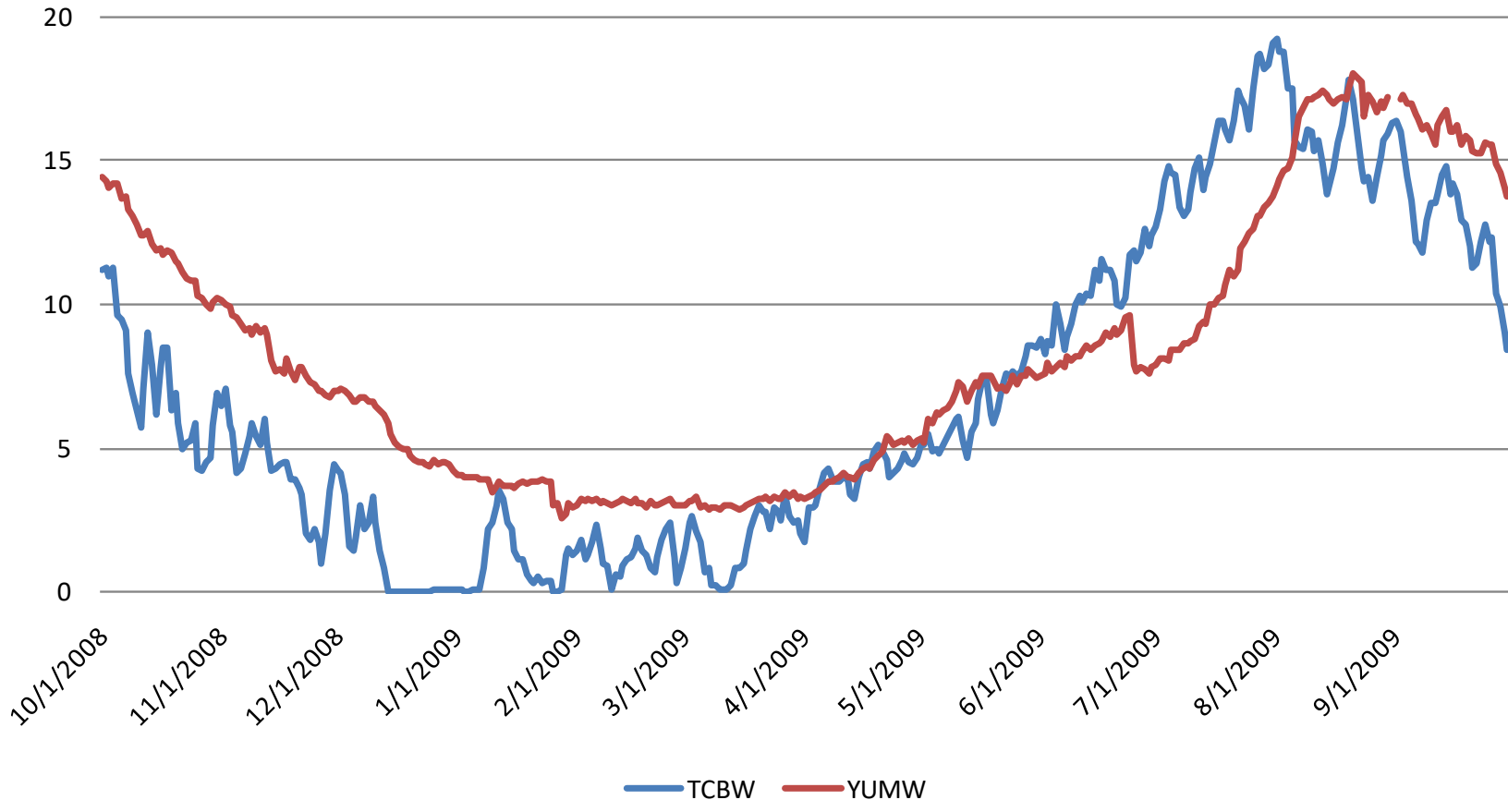
— O mykiss Fall 2009

— Coho Fall 2008

— Coho Fall 2009

— Steelhead Adults at Roza Spring 2010

# Mean Daily Water Temperature Water Year 2009 Taneum Creek (TCBW) and Yakima River at Cle Elum (YUMW)

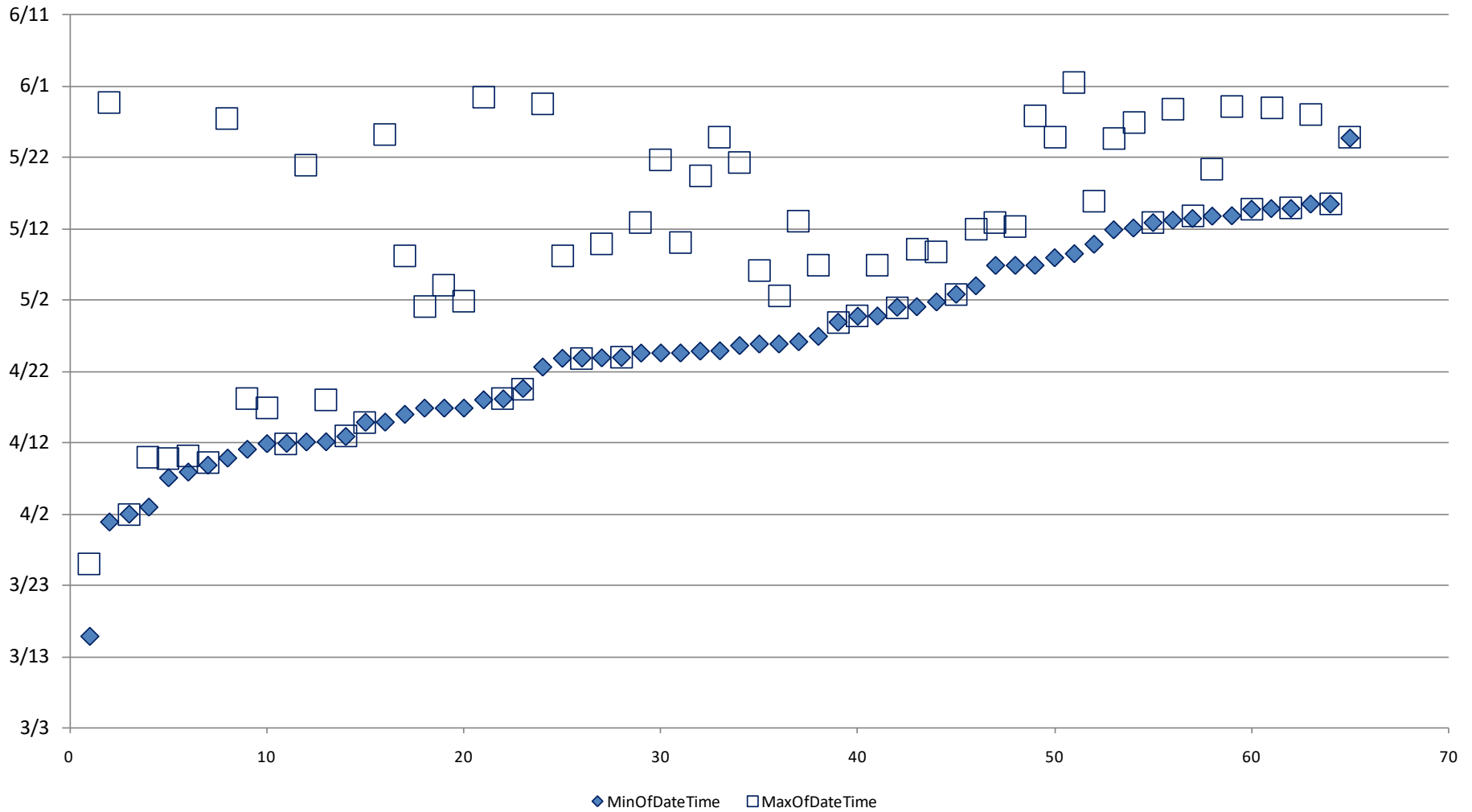


Array 1		Array 2		Array 3	
NA	116	NB	117	NC	124
NABC	88	NBCA	87	NCAB	90
NBC	89	NCA	88	NAB	81
UA	117.3182	UB	118.3448	UC	111.6
Efficiency	0.497175	Efficiency	0.497143	Efficiency	0.526316

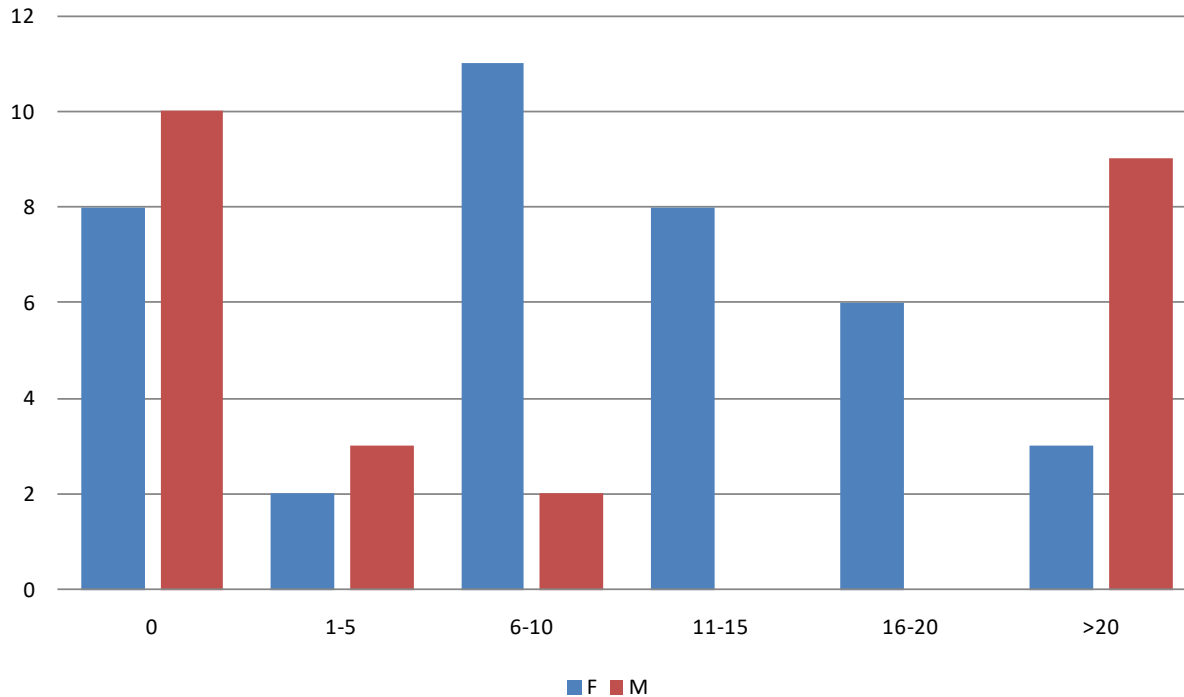
**Estimated Array Efficiency =**

**88.02%**

# First and Last Detection Dates, Roza Adult Steelhead in Taneum Creek



## Days Adult Steelhead Resided in Taneum Ck



	DAYS						
	0	1-5	6-10	11-15	16-20	>20	
F	8	2	11	8	6	3	38
M	10	3	2	0	0	9	24
	18	5					62
			spawners =		39		
			m		11		
			f		28		

**Summary of wild steelhead movements for 351 steelhead tagged at Roza Dam and tracked to upstream locations between 2002 and 2006 (Reclamation, 2009).**

Location of Upstream Migration and Presumed Steelhead Spawning	Number of Radio-tagged Steelhead
Mainstem Yakima River	133 (38.2%)
<b>Total Mainstem Spawning</b>	<b>133 (38.2%)</b>
	137 (38.8%)
Swauk Creek	46 (13.0%)
Taneum Creek	17 (4.8%)
	12 (3.4%)
, Umtanum Creek, Cherry/Wilson/Naneum Creeks	6 (1.7%)
<b>Total Tributary Spawning</b>	<b>218 (61.8%)</b>

# Future for Taneum PTIS

---

- YRBWEP/USFWS will continue to O&M, budgeted for next 5 years
- Get cell phone service, connect to PTAGIS
- Antenna repair, addition?
- Provide annual report to Reclamation Taneum Ck recovery efforts, keep up with the data!