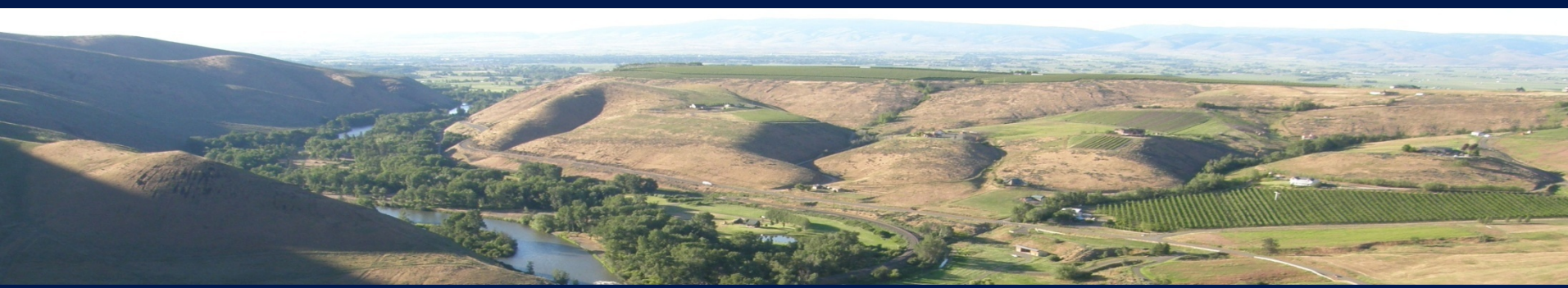


# The Yakima Beaver Project



# Yakima Beaver Project Goal



Goal: Restore upper Yakima watersheds

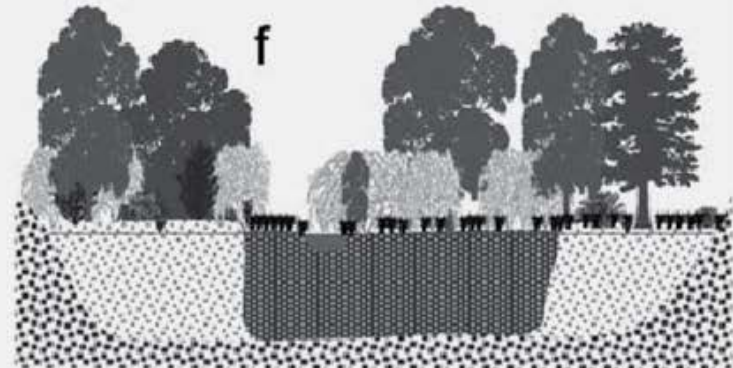
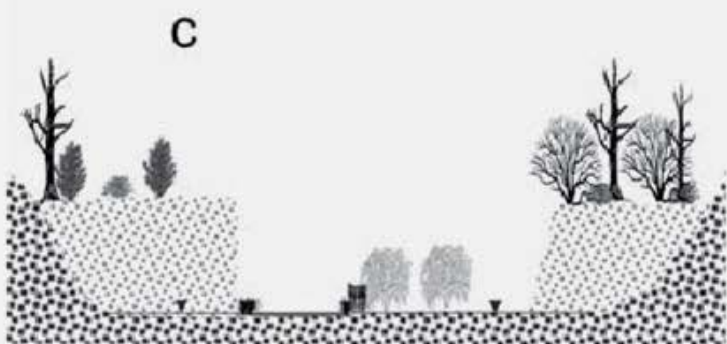
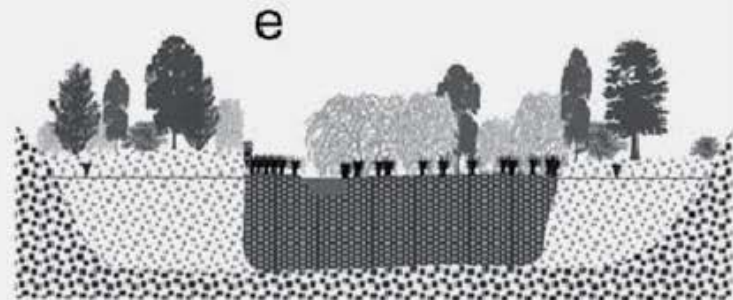
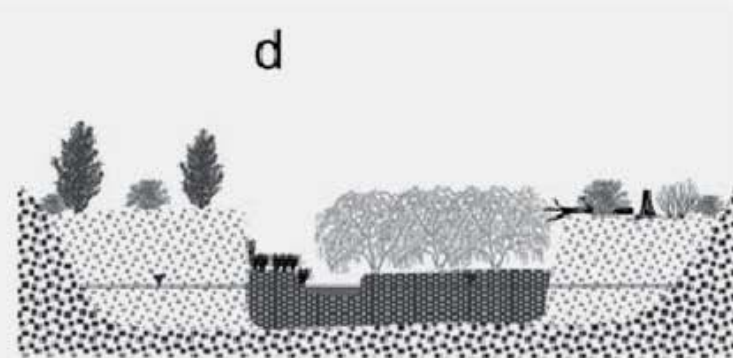
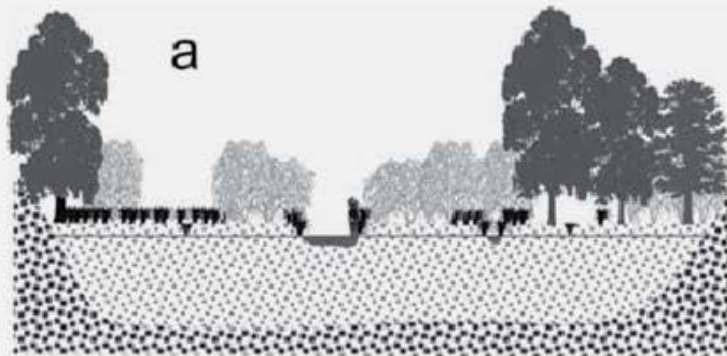
How?

1. Live-Trap “problem” beavers from valley (30-35/year)
2. Place beavers in holding facility (family groups)
3. Release beaver in high-priority upper Yakima watersheds
  - Teanaway River – Indian Creek, Jack Creek etc.
  - Taneum Creek
  - Manastash Creek
4. Monitor success

# Stream channel incision and rebuilding

1176

M. M. Pollock, T. J. Beechie and C. E. Jordan



Geomorphic changes upstream of beaver dams in Bridge Creek, an incised stream channel in the interior Columbia River Basin, eastern Oregon

# Why haven't beavers recolonized?

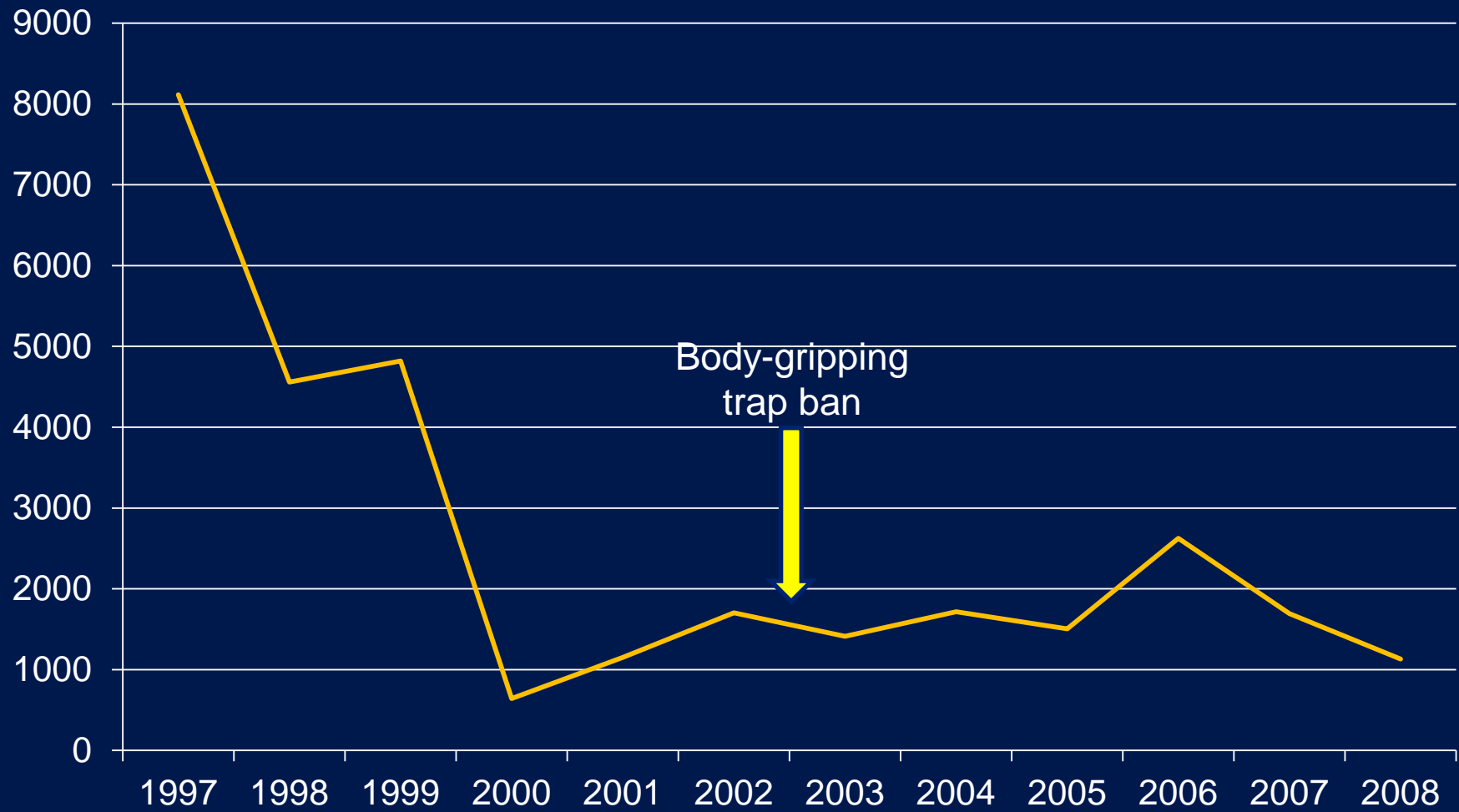


- Major removal from fur trapping; continued trapping pressure  
Result = reduced dispersal rates
- Yakima floodplains disconnected – loss of beaver habitat
- Remaining floodplains: Agriculture/Houses/Infrastructure  
Result = incompatible with beavers
- Streams have incised – more difficult to build beaver dams
- Riparian Systems are compromised – loss of riparian vegetation (habitat) to support beavers.

# Why haven't beavers recolonized?



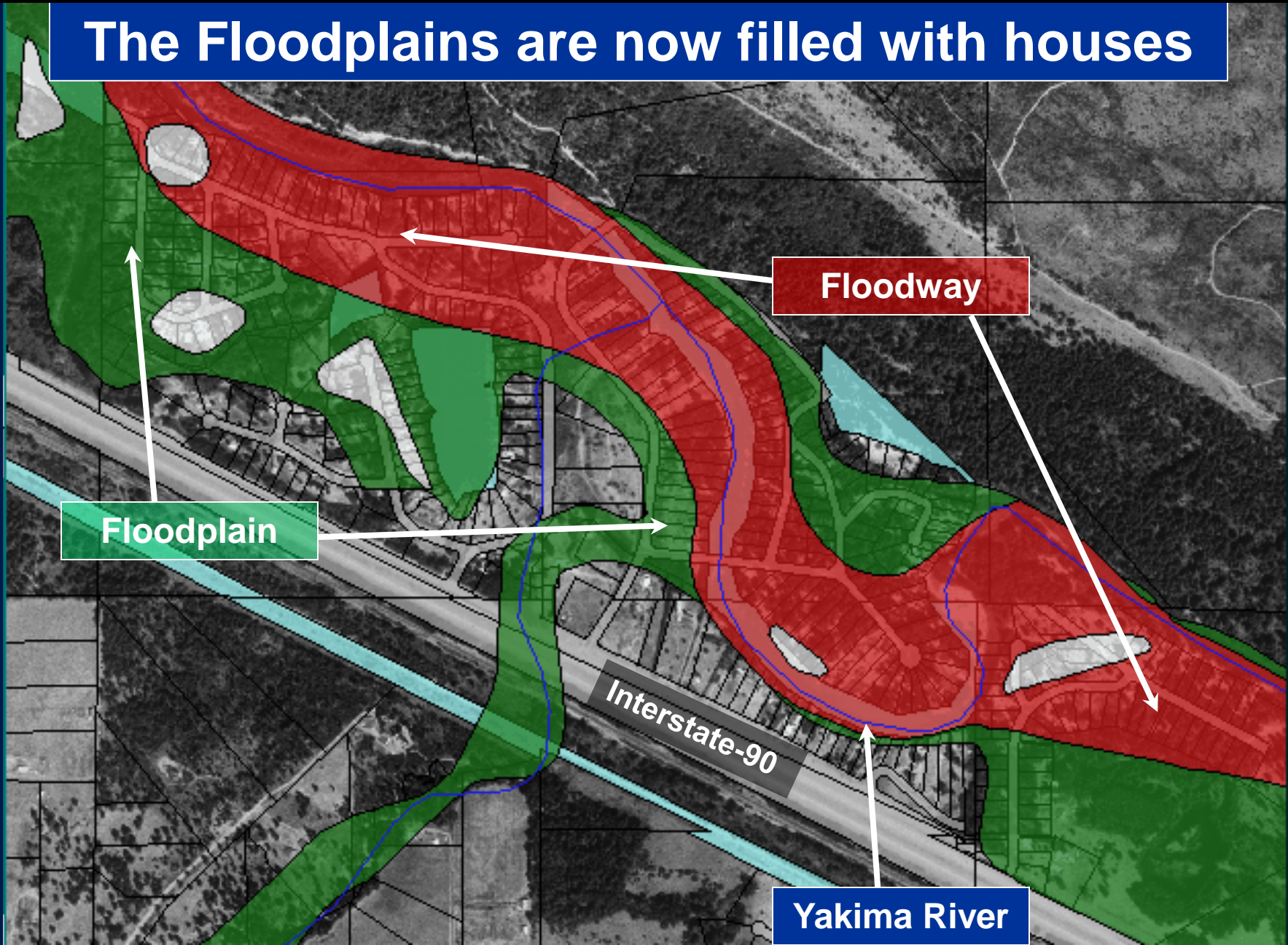
Reported number of beavers trapped in Washington State  
1997-2008  
(Statewide total = 31,072)



# Why haven't beavers recolonized?



The Floodplains are now filled with houses



Floodway

Floodplain

Interstate-90

Yakima River

# Why haven't beavers recolonized?



Streams have incised



# Why care about Beaver?

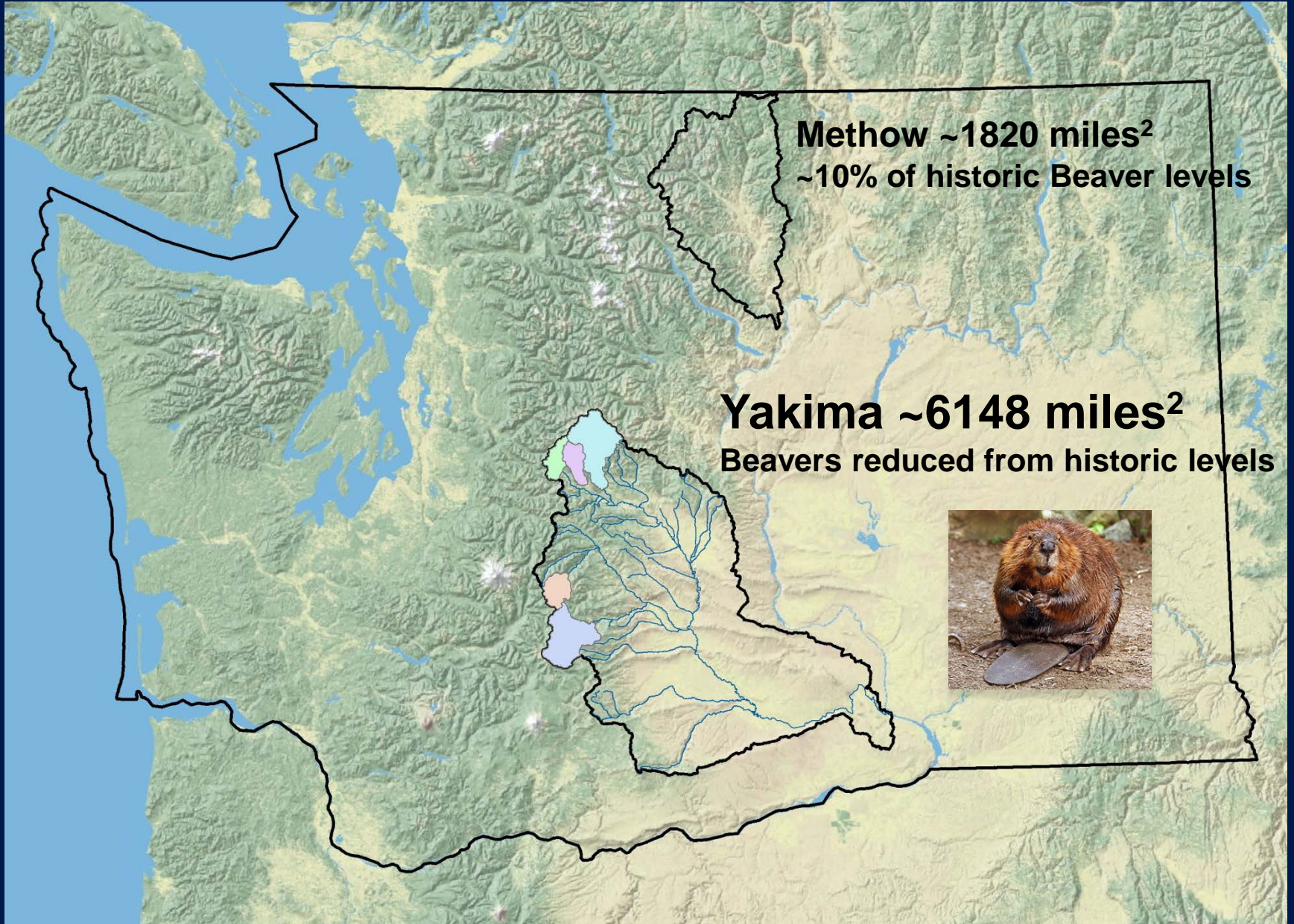


- Salmonid rearing in Beaver Ponds results in much higher fitness and survival.
- Beavers engineer for free...  
perform free restoration, and free maintenance
- Beavers store water – water is what fish swim in and what people irrigate with.
- Beavers are cool! ..... And.....





# A tale of Two Basins

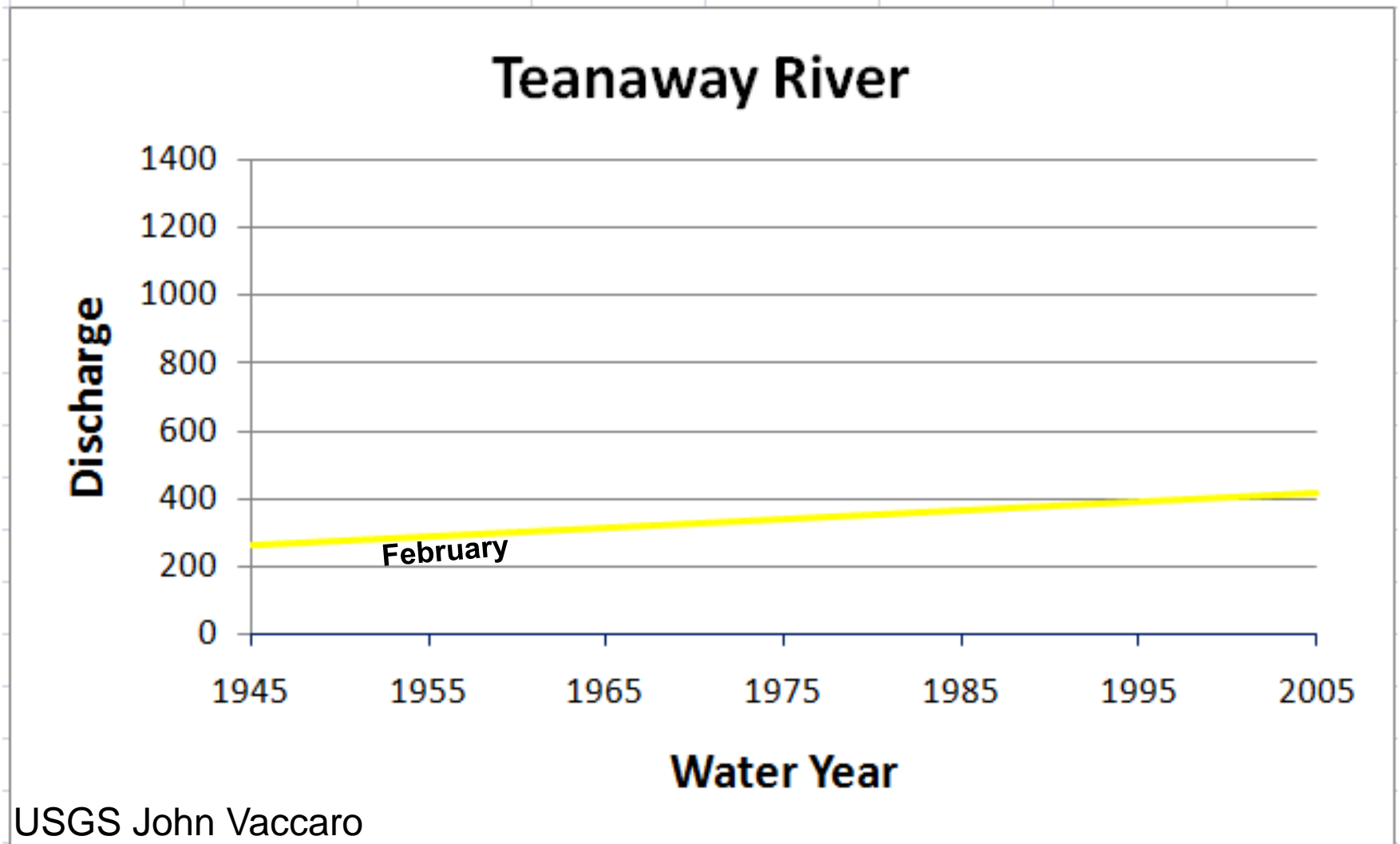


**Methow ~1820 miles<sup>2</sup>**  
**~10% of historic Beaver levels**

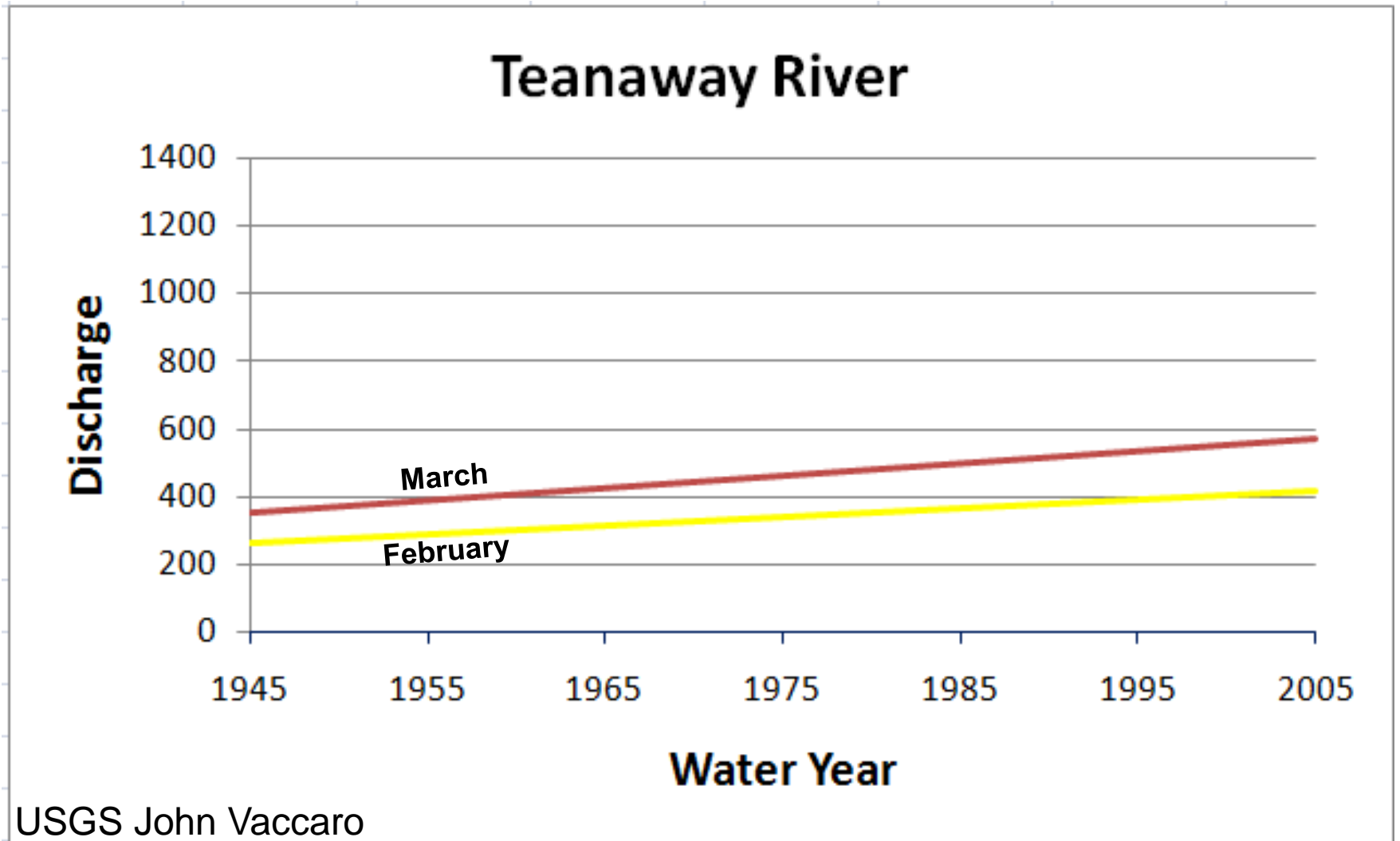
**Yakima ~6148 miles<sup>2</sup>**  
**Beavers reduced from historic levels**



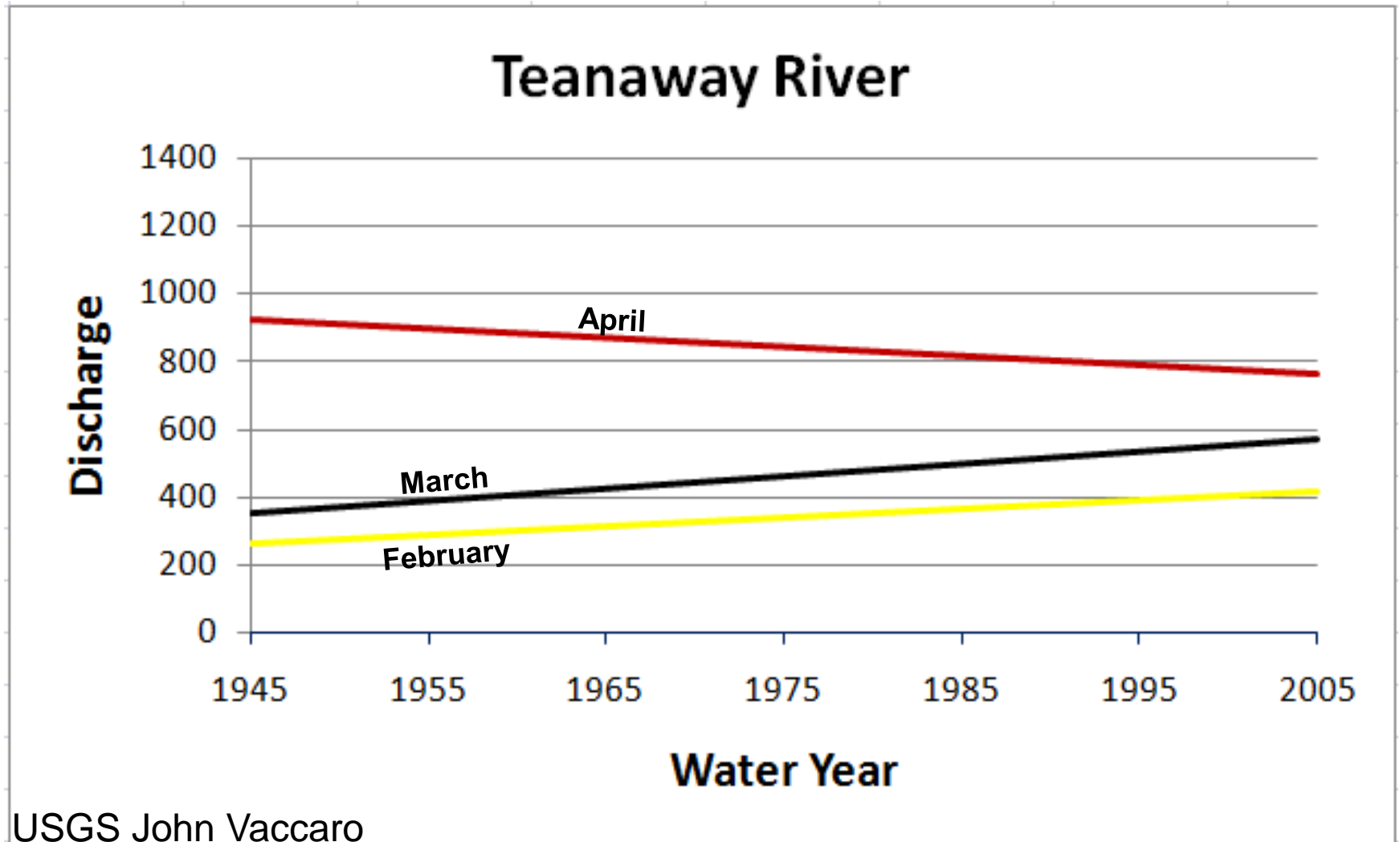
# Teanaway Hydrograph Shift



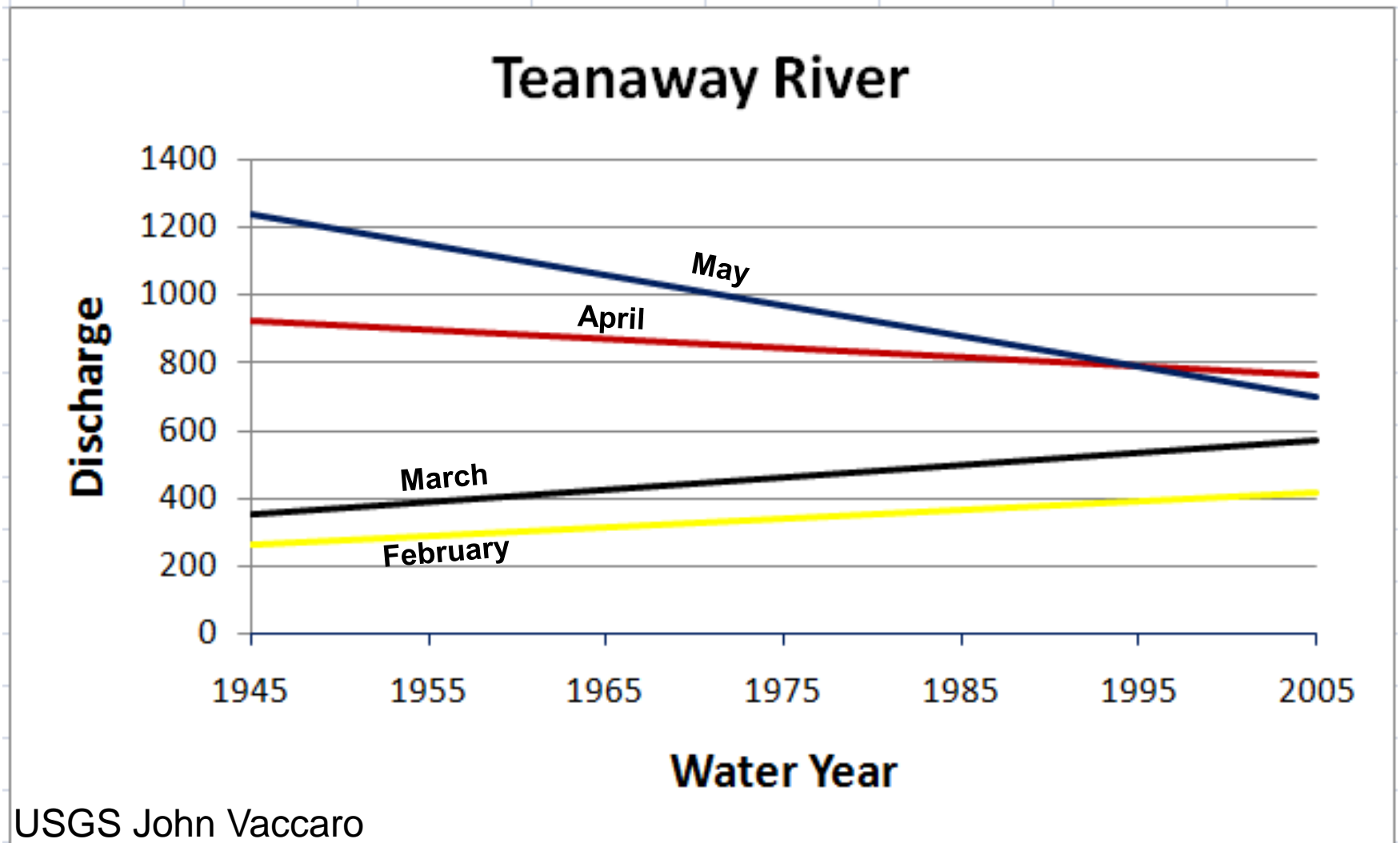
# Teanaway Hydrograph Shift



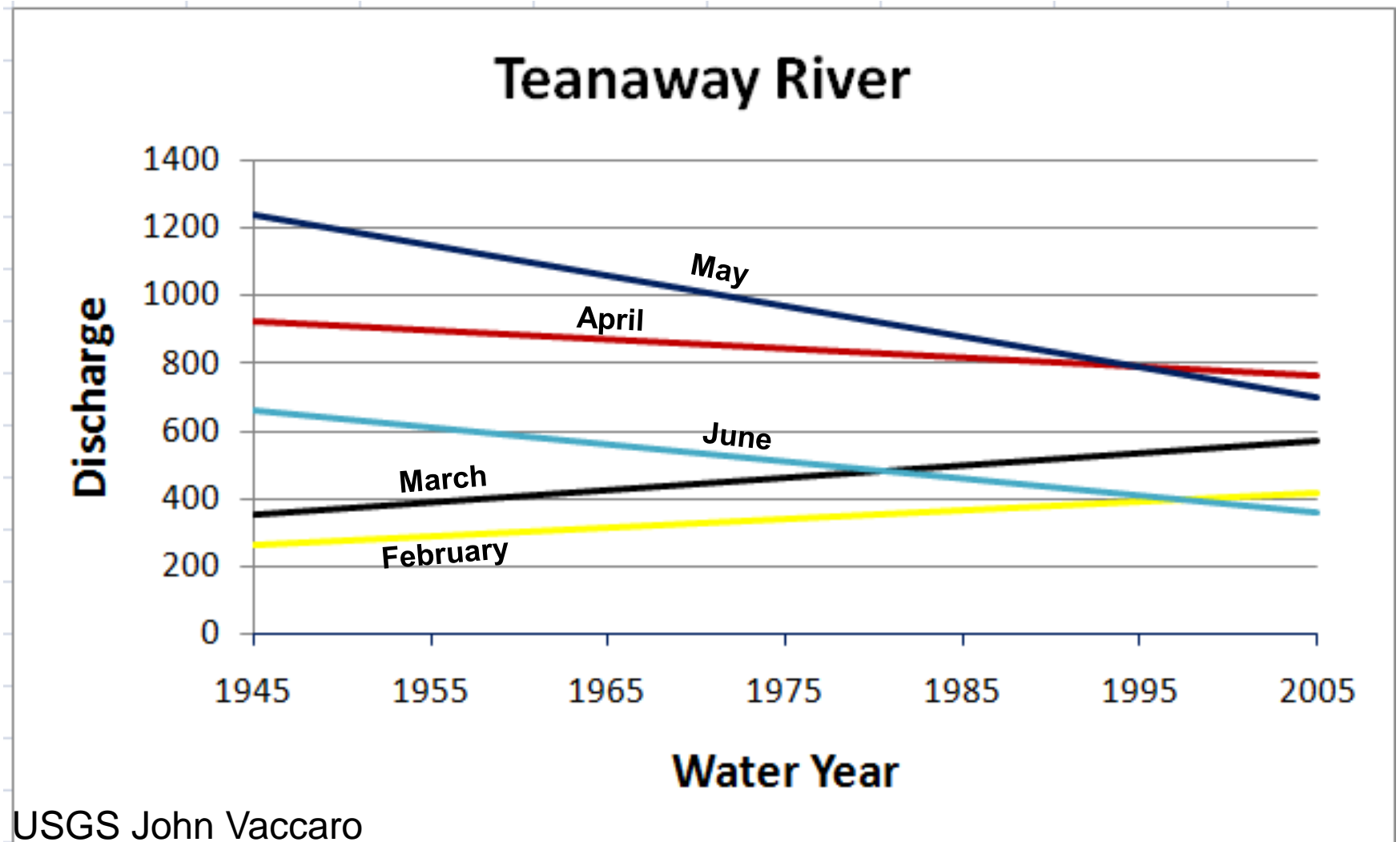
# Teanaway Hydrograph Shift



# Teanaway Hydrograph Shift

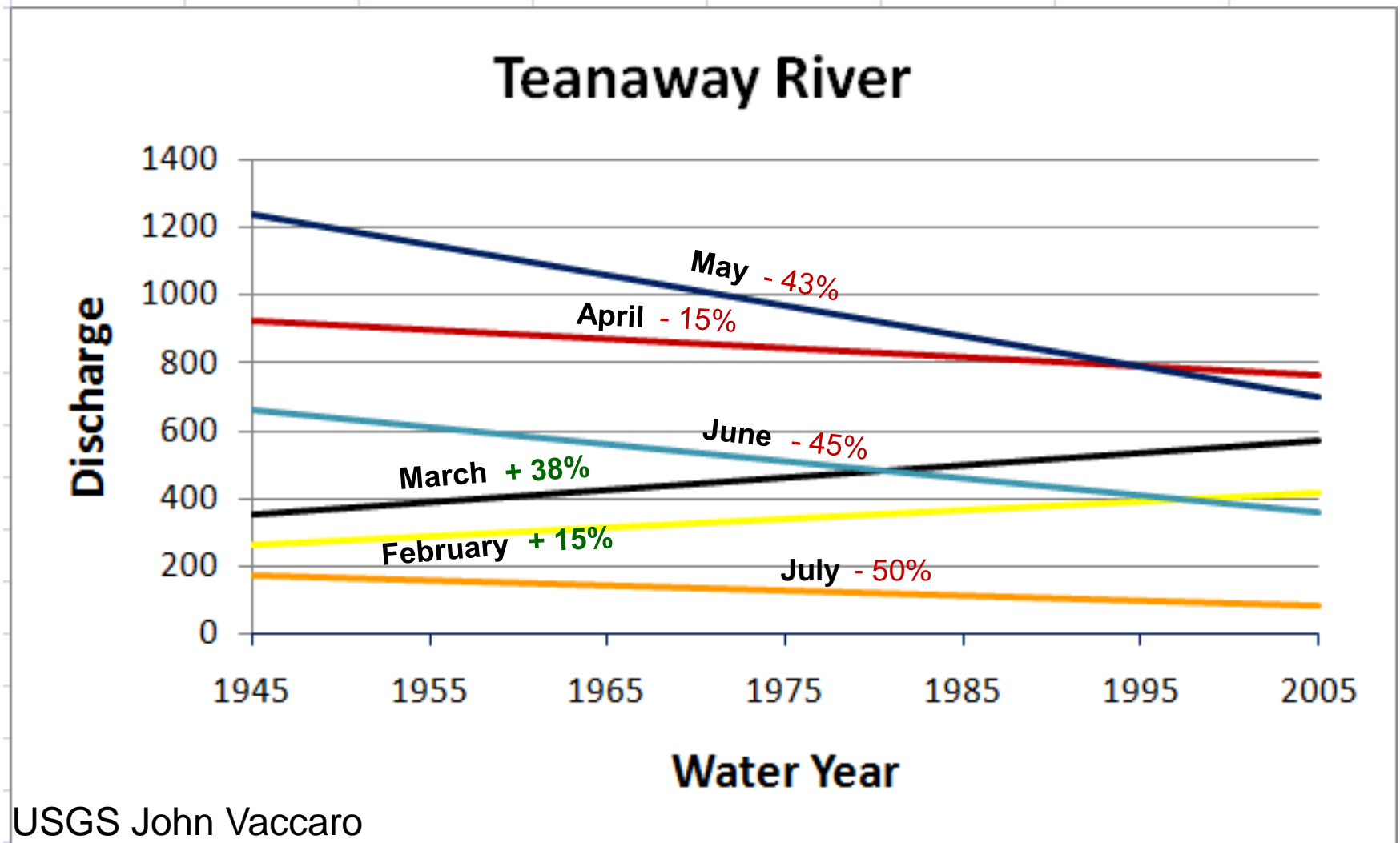


# Teanaway Hydrograph Shift



# Note: April 1<sup>st</sup> Water Right for 1<sup>st</sup> Irrigation

## Teanaway Hydrograph Shift



USGS John Vaccaro

Mean Annual = 350 ft<sup>3</sup>/s; Drainage Area = 170 Square Miles

# Recovery plans call for beaver reintroduction

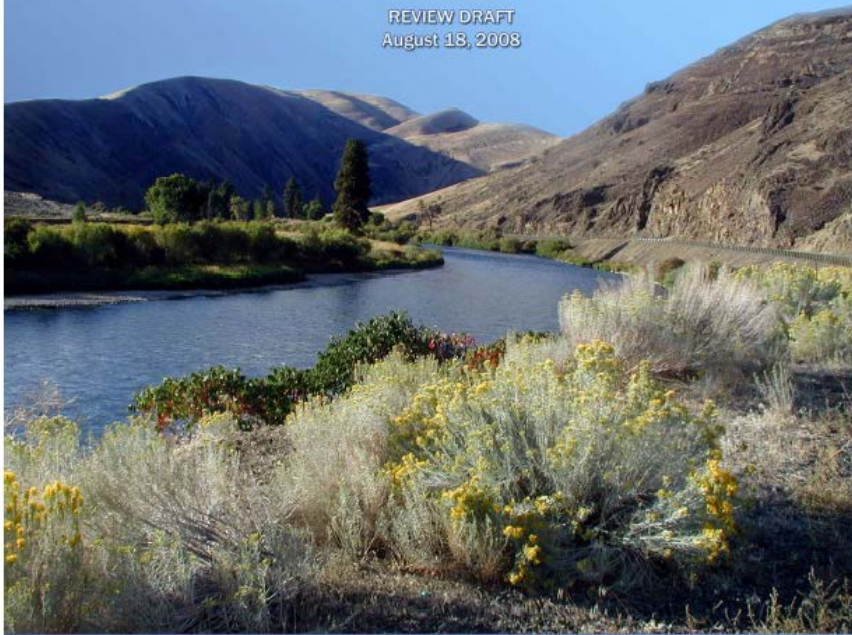


## YAKIMA STEELHEAD RECOVERY PLAN

Extracted from the  
**2005 Yakima Subbasin Salmon Recovery Plan**

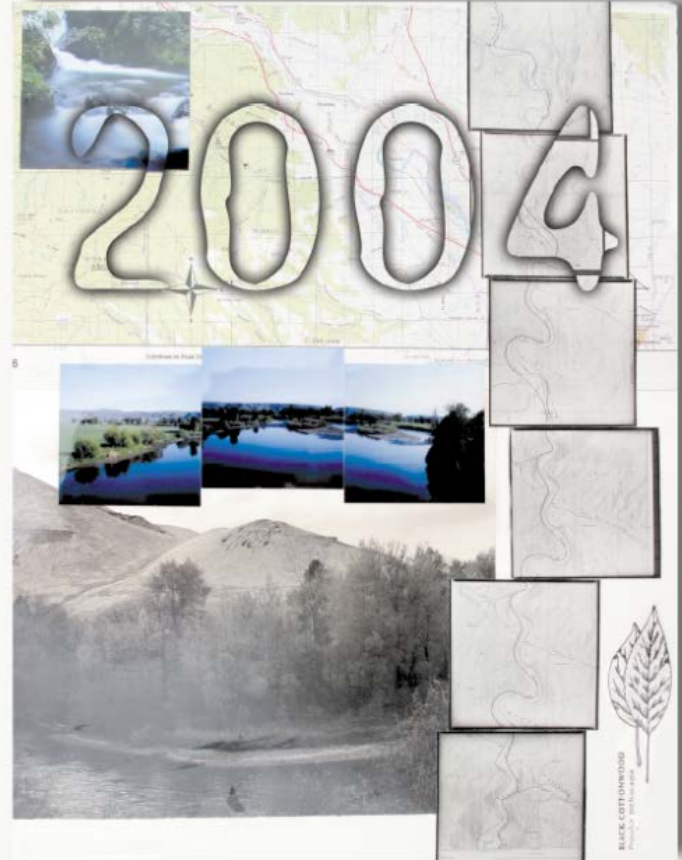
With Updates

REVIEW DRAFT  
August 18, 2008



Prepared by  
the Yakima Basin Fish & Wildlife Recovery Board

## YAKIMA SUBBASIN PLAN

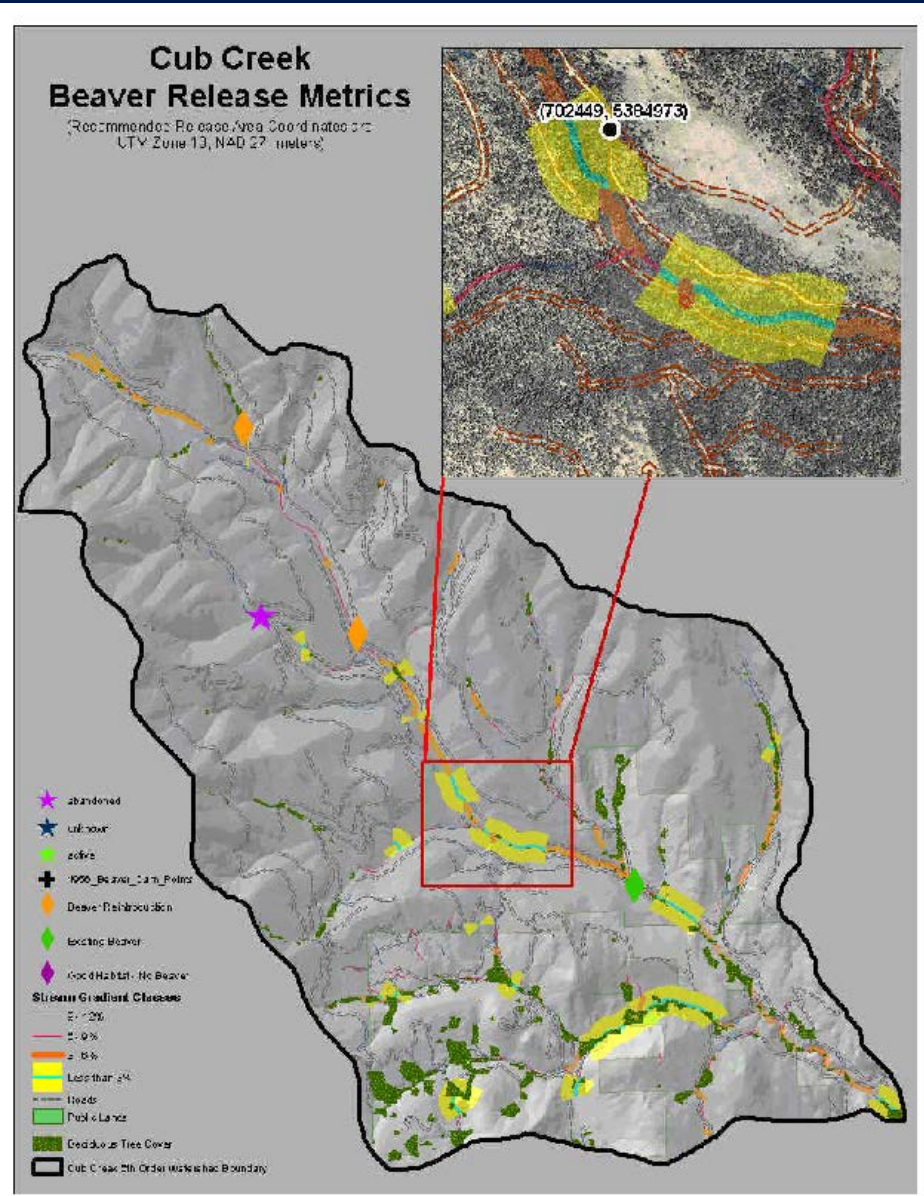


YAKIMA SUBBASIN  
**FISH AND WILDLIFE**  
PLANNING BOARD

**SUPPLEMENT**  
NOVEMBER 26, 2004



# Methow GIS Analysis: Sub-watershed



# Step 2: Capturing a beaver



# Temporary beaver “lodge”



- Typical Lodge cost:
- 20-25 cinder blocks (\$2/block)
  - Plywood (\$20/sheet)
  - Ramp (\$20)
  - PVC Awning (\$40-50)

# Transferring the beaver for delivery



# Bringing some play toys along



# Carrying the clients to their new home



# The new homestead



Temporary Lodge and small pond

# Voi La! Water storage and fish rearing





# Lower Wenas Creek Beaver Dams on USBOR

● 2007 5 Dams

~ 1.5 miles

Selah Intermediate School  
Wenas Creek Project

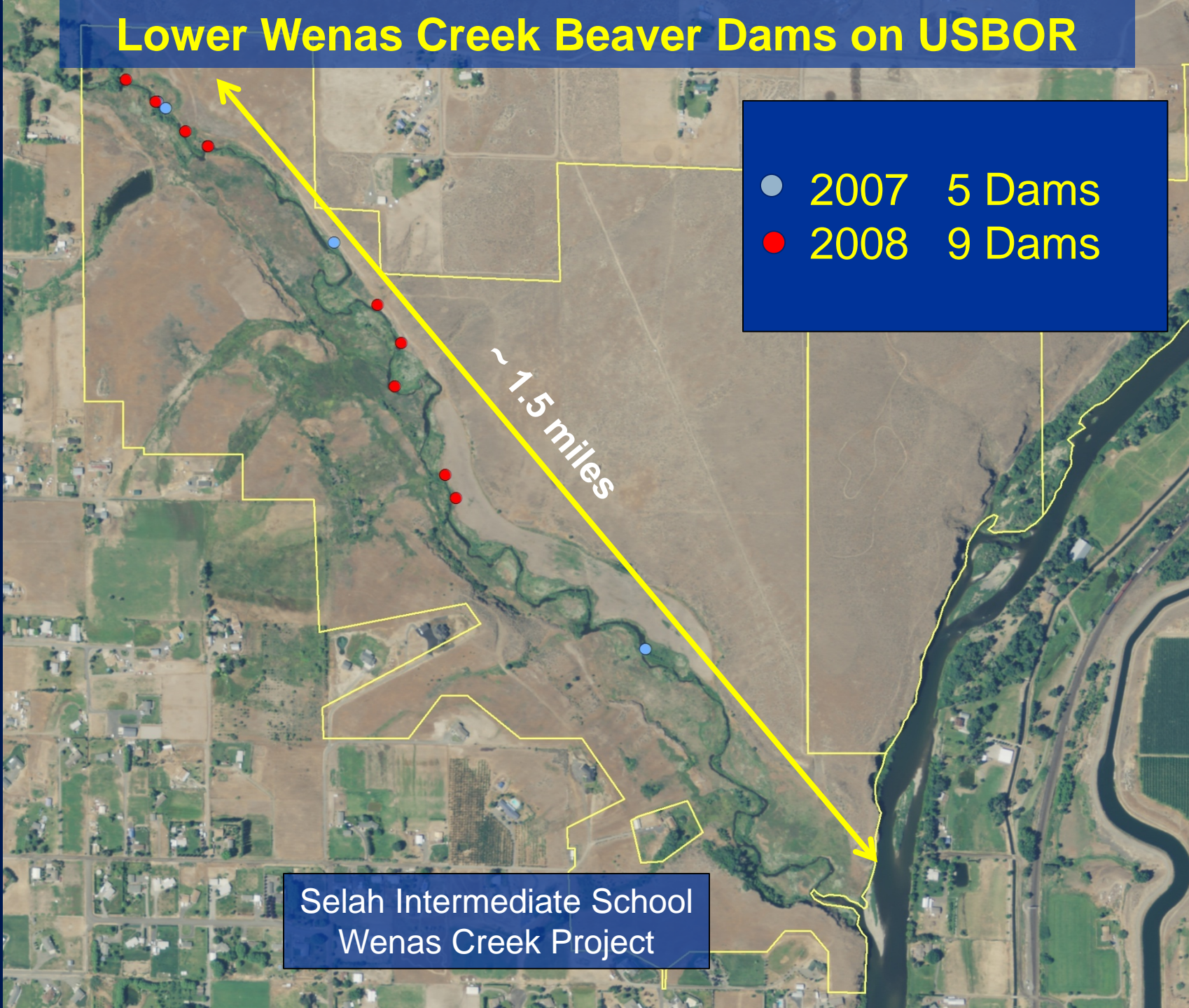


# Lower Wenas Creek Beaver Dams on USBOR

- 2007 5 Dams
- 2008 9 Dams

~ 1.5 miles

Selah Intermediate School  
Wenas Creek Project

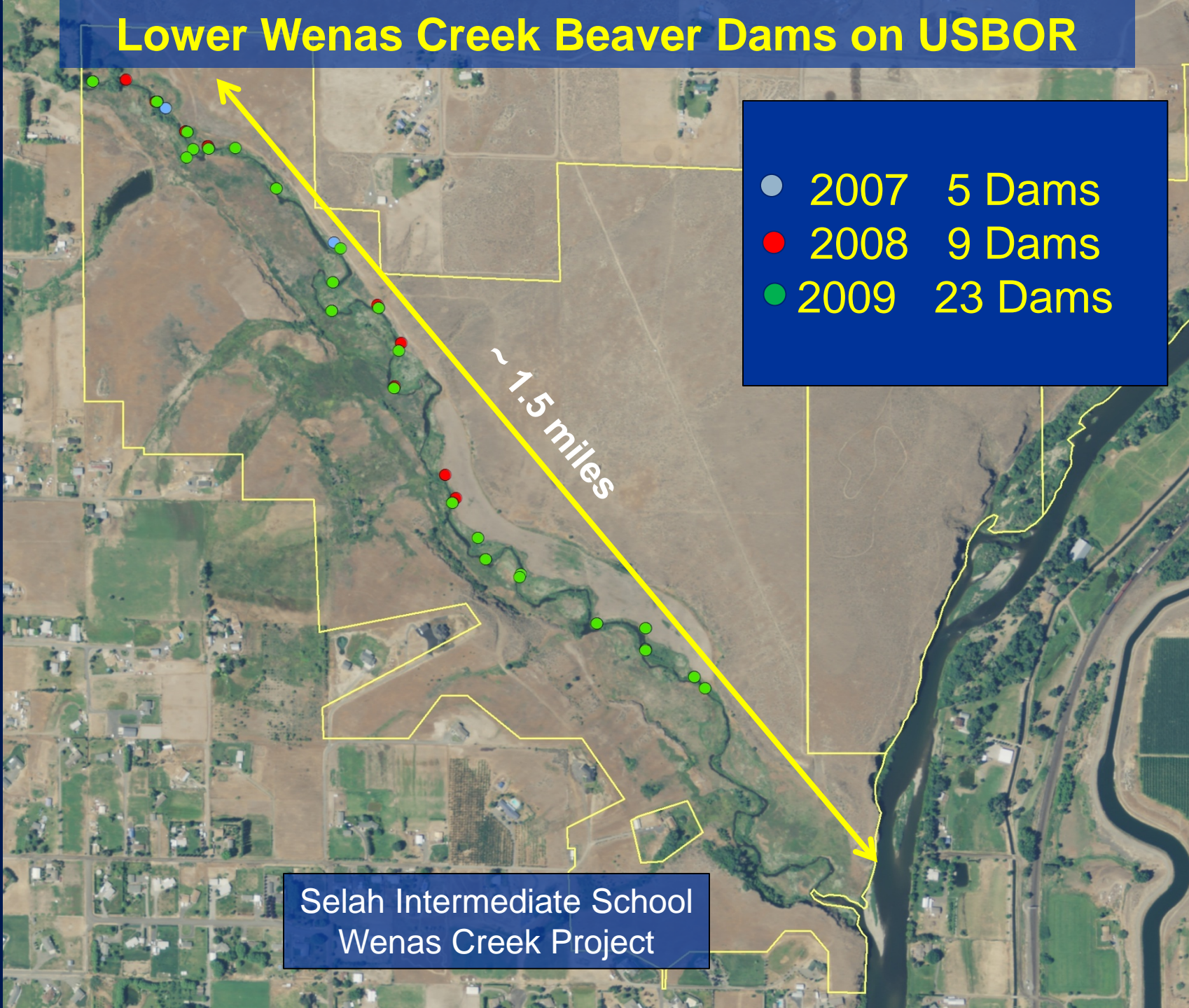


# Lower Wenas Creek Beaver Dams on USBOR

- 2007 5 Dams
- 2008 9 Dams
- 2009 23 Dams

~ 1.5 miles

Selah Intermediate School  
Wenas Creek Project

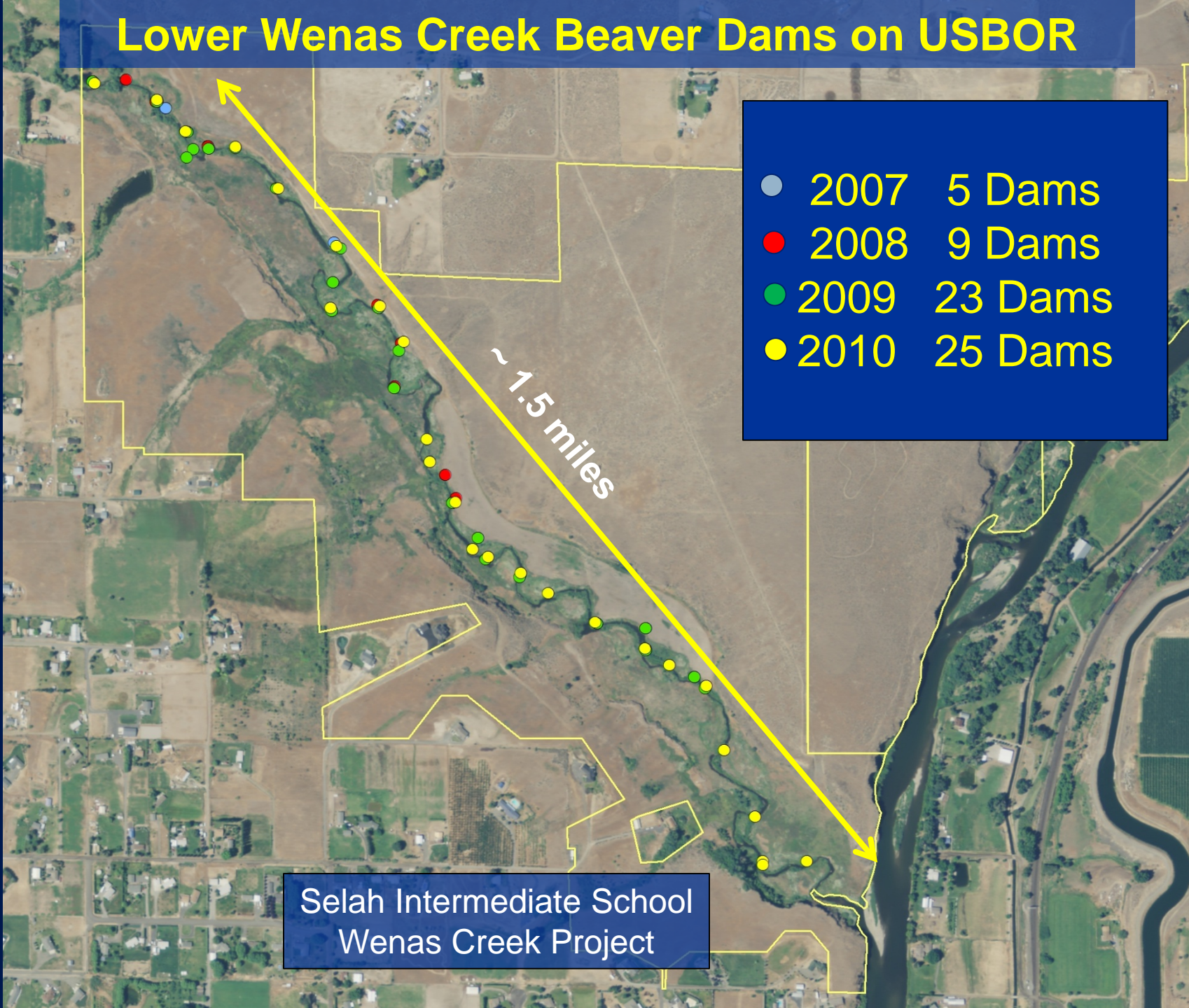


# Lower Wenas Creek Beaver Dams on USBOR

● 2007	5 Dams
● 2008	9 Dams
● 2009	23 Dams
● 2010	25 Dams

~ 1.5 miles

Selah Intermediate School  
Wenas Creek Project





# Ask not what beavers can do for you, but what you can do for the beavers!



- Help Identify beaver lodge locations (current and historic) - GPS
- Help notify us of “problem beavers” that need relocating
- Provide site locations for the translocated beavers
- Come volunteer with us

