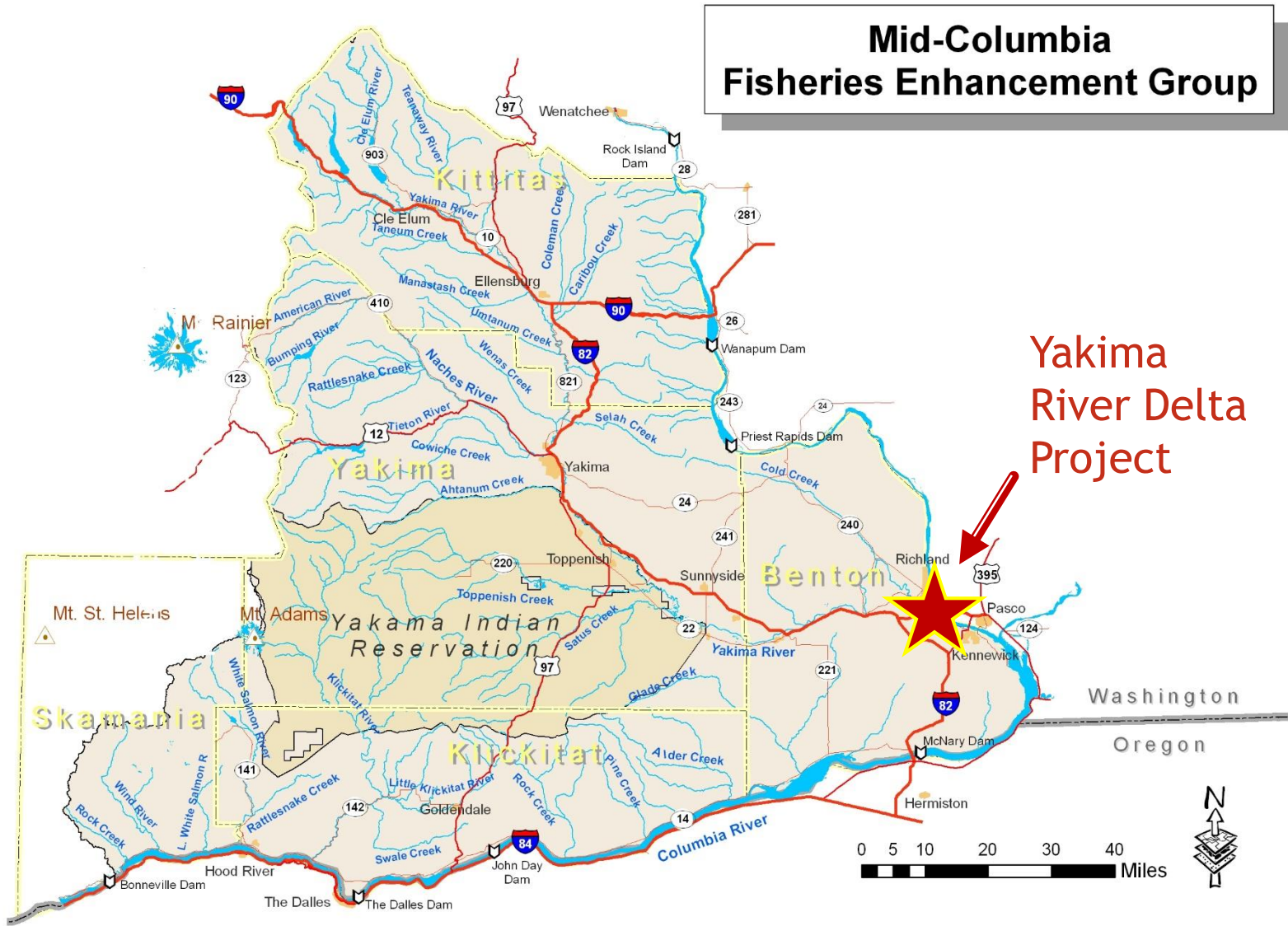


Yakima River Delta Enhancement Project:

Bateman Island Update

Merritt Mitchell Wajeesh, Lower Yakima River Project Manager
Mid-Columbia Fisheries Enhancement Group,

Yakima Science and Management Conference, June 13-14, 2018



Mid-Columbia Fisheries Enhancement Group

Yakima River Delta Project

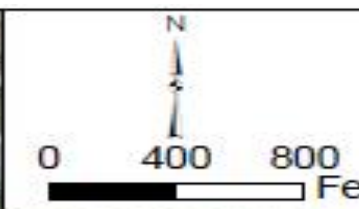
- One of **14** Regional Fisheries Enhancement Groups
- Established by the Legislature in 1990
- Partner with Landowners, Communities and State, Tribal and Federal Partners to implement habitat restoration projects that benefit salmon and other native fish.
- Conduct community Outreach and Engagement.

Today's presentation

- ▶ Brief history
- ▶ What We've Learned
- ▶ Public Outreach/Stakeholder Engagement
- ▶ Project Status

This project is successful due its partners and relies heavily on the technical expertise of Benton Conservation District, a Technical Advisory Group, and support and funding from the Yakima Basin Integrated Plan among others - thank you!

Bateman Island



YAKIMA RIVER

YAKIMA RIVER DELTA

BATEMAN ISLAND

COLUMBIA RIVER / McNARY POOL (NORMAL POOL EL 344 FT NAVD)

CAUSEWAY

COLUMBIA PARK MARINA

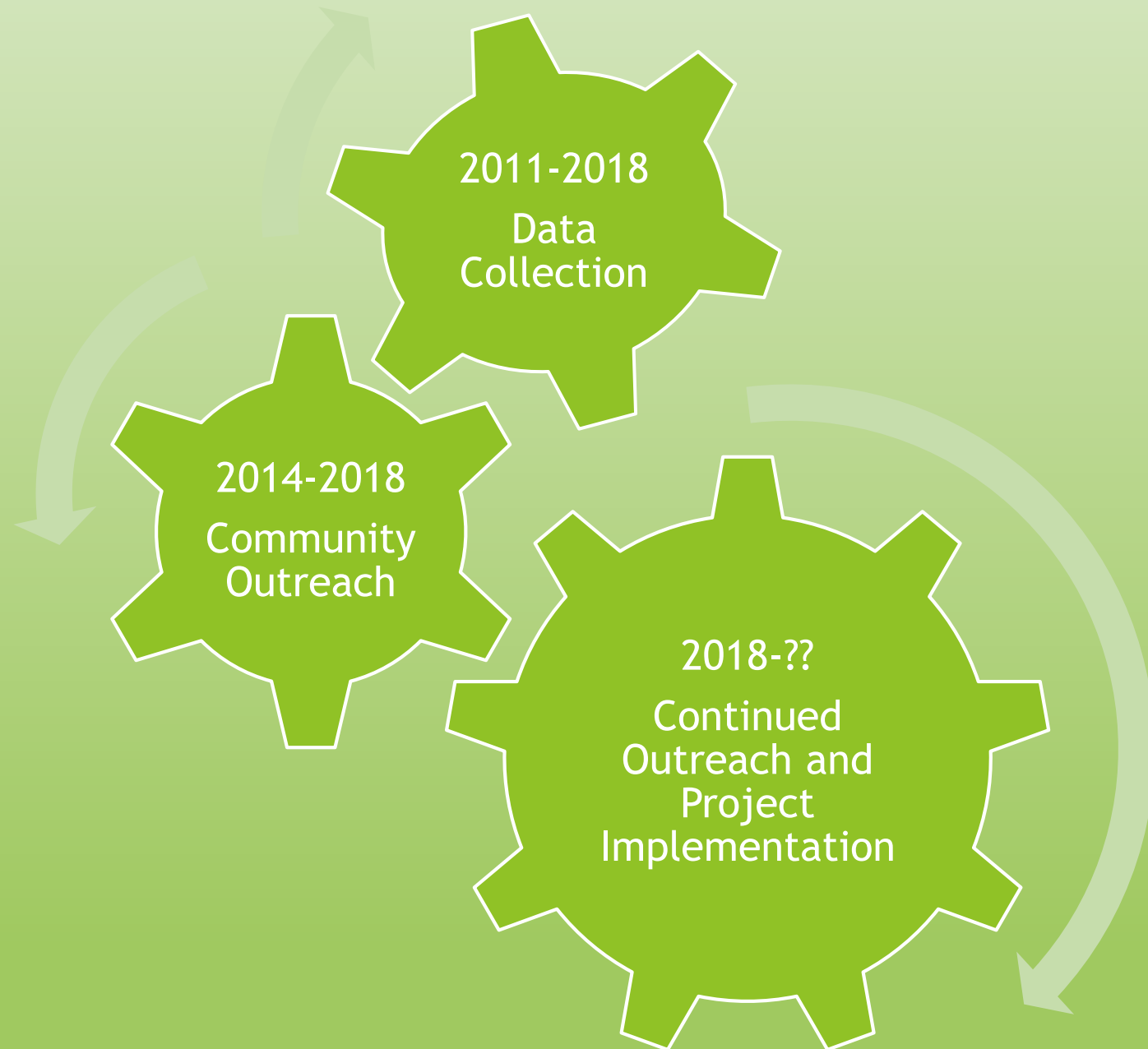
City of Richland boat dock and launch

Mid-Columbia Fisheries Enhancement Group
Bateman Island
Causeway Concept Design Project
Figure 1.1
Project Location Map

Gray & Osborne, Inc.







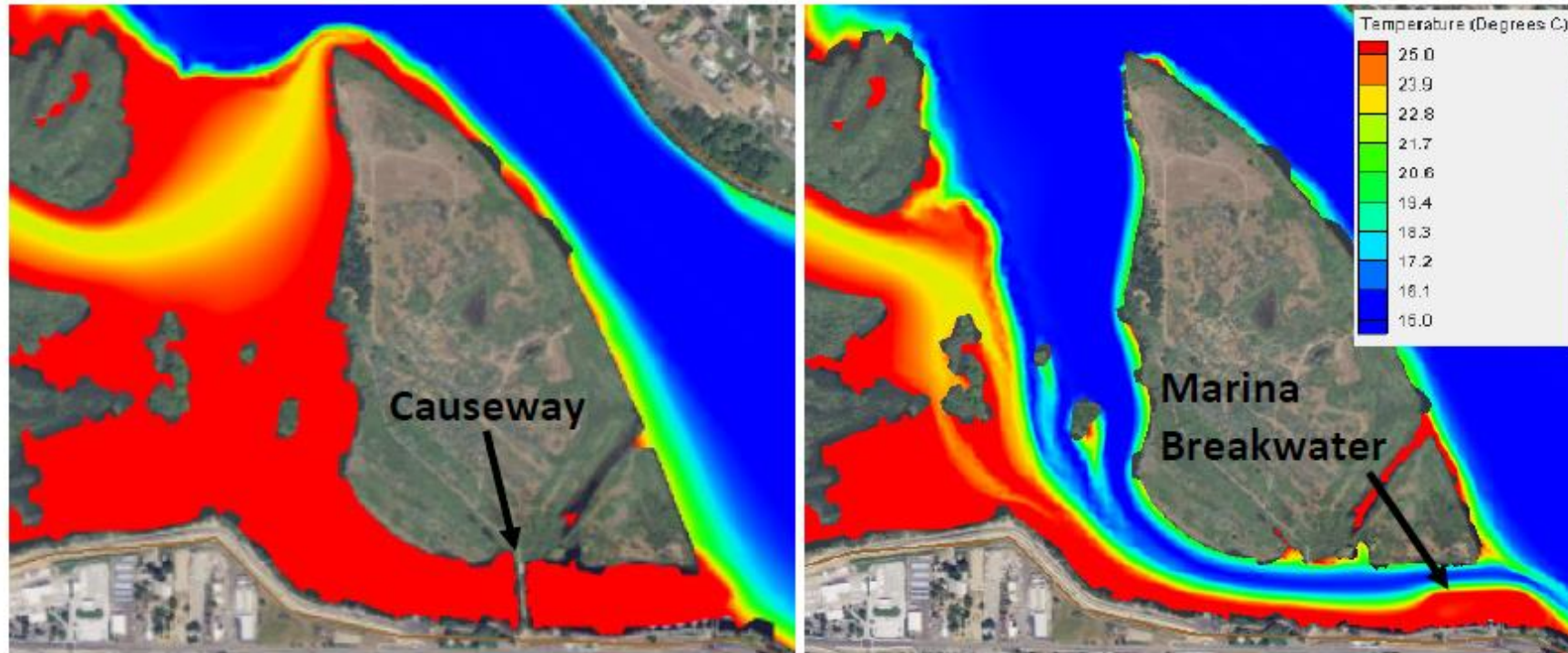
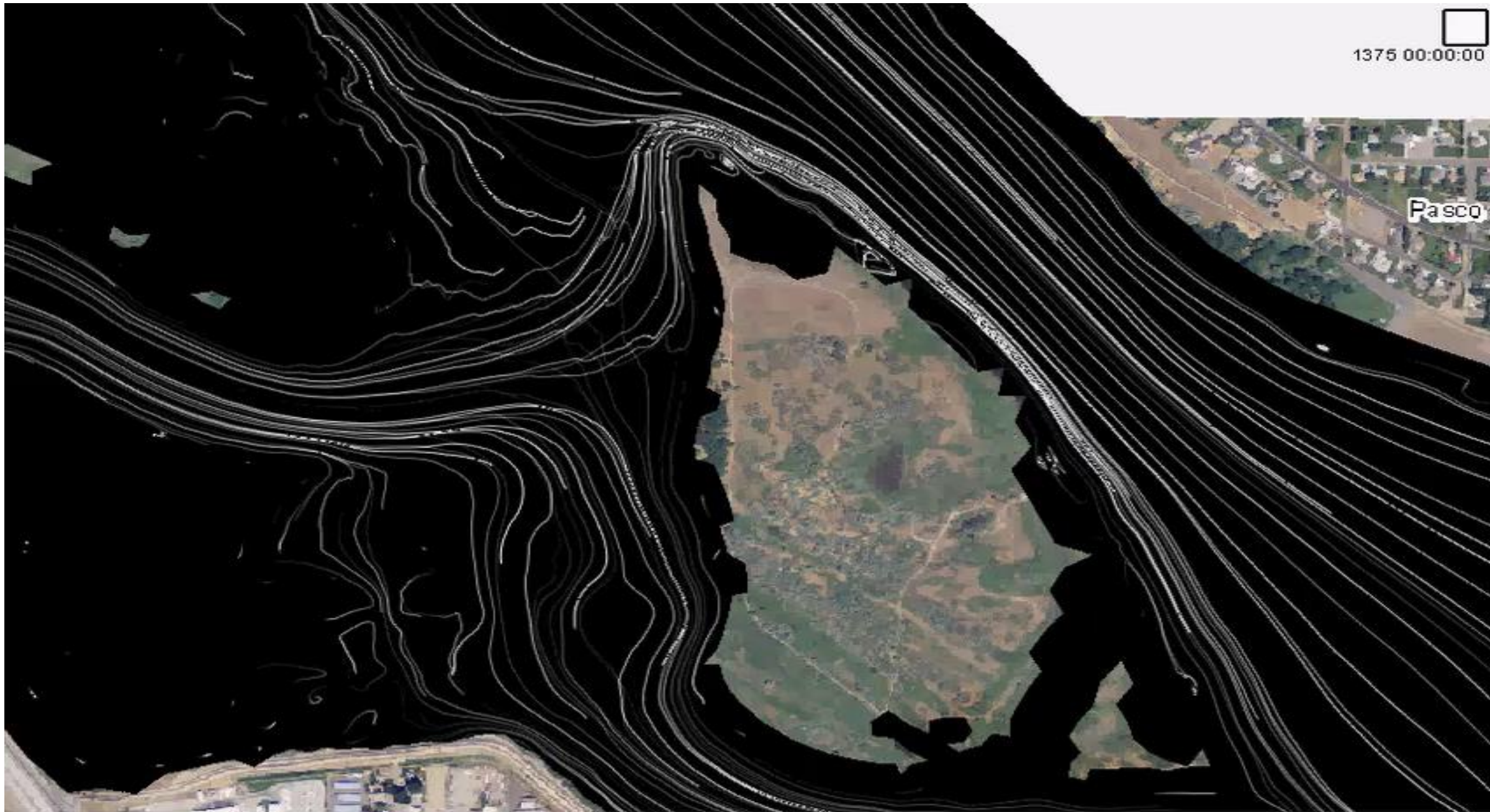


Figure EX1: Simulated Temperatures for a Moderately High Columbia River Discharge on July 8, 2012, (Left) Existing Conditions, (Right) Alternative 8, Full Causeway Removal with a Breakwater around Marina

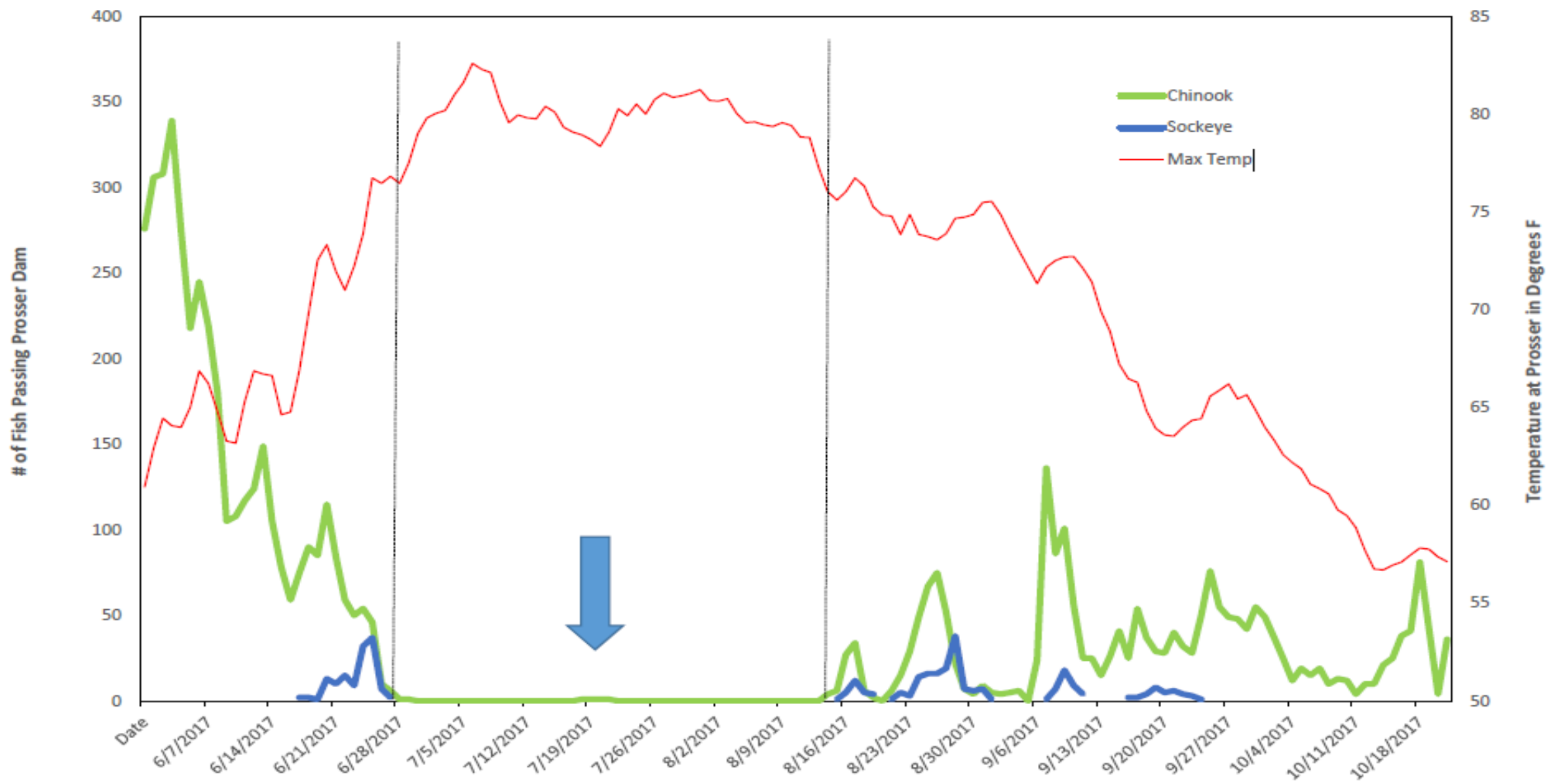


1375 00:00:00



Pasco

Fish Passage at Prosser, Summer 2017







Community Outreach and Input

LOCAL

JUNE 25, 2016 6:31 PM

Bateman Island causeway eyed for breaching to save salmon, steelhead

HIGHLIGHTS

Land bridge hurts salmon, steelhead

Richland wants to protect public access, private marina

LOCAL

JULY 6, 2016 4:30 PM

Momentum builds for Bateman Island access, marina

HIGHLIGHTS

Port of Kennewick to lend support to island access

State contemplates helping fish by breaching causeway

LETTERS TO THE EDITOR

JULY 10, 2016 2:18 AM

Letter: Breaching Bateman Island causeway would create unmanageable current for boaters

LETTERS TO THE EDITOR

AUGUST 2, 2016 3:55 AM

Letter: Inconvenience to boat owners shouldn't stop breach of Bateman Island causeway

EDITORIALS

JULY 6, 2016 5:03 AM

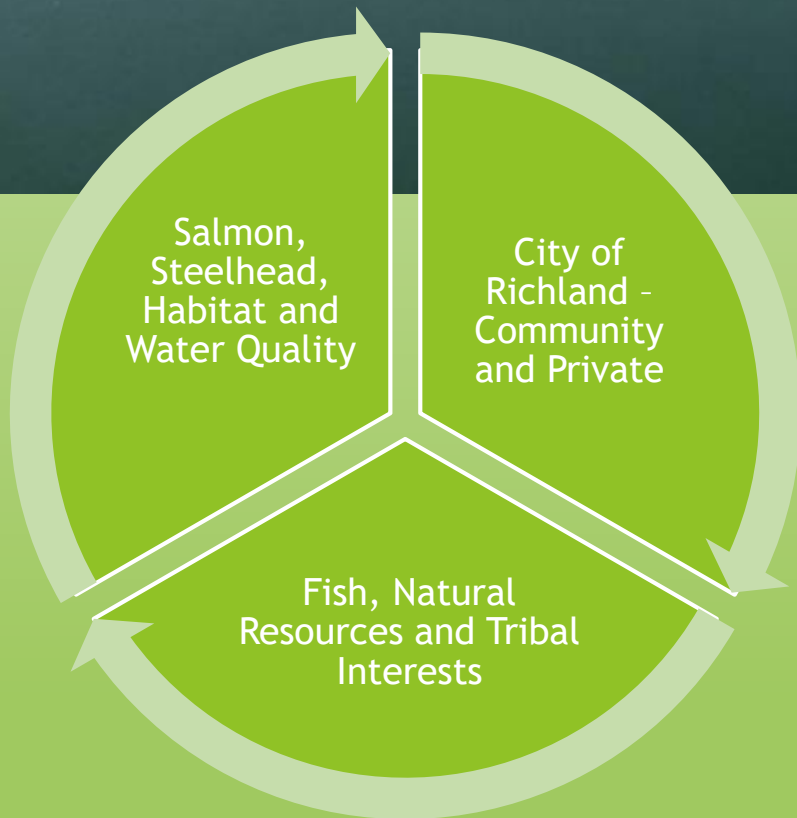
Our Voice: State responsible for mitigation if Bateman causeway breached



Yakima River Delta Enhancement Project



www.tri-cityherald.com



“The passage barrier at Bateman Island limits salmon and steelhead restoration in the Yakima Basin, negatively affects treaty-protected tribal fishing rights, and reduces recreational fishing not just in the Tri-Cities, but the entire Yakima River.”

-Phil Rigdon, Deputy Director
Yakama Nation DNR



CONNECT WITH
EXISTING BOAT PATH

BOAT
CENTER

LAUNCHING
RAMP

FEE COLLECTION STATION

MARINA
BOAT BASIN

TOUR BOAT MOORAGE
FLDAT PLANE MOORAGE

CONVENTIONS
RESTAURANTS
RETAIL SHOPS
HOTEL

BIKE/RU

PERFORMANCE LAWN
CONCERTS

PAVILION
EXHIBITS
SPORTS ARENA

RESTROOMS

SERVICE
BUILDING

RESTROOMS

Possible Timeline: Yakima Delta, 1135

August, 2018

Fall, 2021

Winter, 2021 - 2022?

Fall, 2022?

After that

Federal Interest
Determination

Phase 1 (Study)

Additional
permits and
final design

Implementation

Monitoring



The Continuing Vision

Remove a significant fish passage barrier

- ▶ Improve river conditions for migratory salmonids and Steelhead
- ▶ Improve overall environmental and recreational conditions.

Access

- ▶ Address public access
- ▶ New recreational opportunities

Marina

- ▶ Relocation or Design Modification
- ▶ Improvements to the Yakima Delta will have long-term positive impacts

Continued community outreach and engagement with a very vocal local Stakeholder group!



Bateman After 2017 Fire - Courtesy of News Talk 870

Merritt Mitchell-Wajeeh
Lower Yakima Project Manager

Rebecca Wassell
Yakima Basin Program Director

Mid-Columbia Fisheries Enhancement Group
413 N. Main St., Ste. K
Ellensburg, WA 98926
(509)925-3474

merritt@midcolumbiafisheries.org
becca@midcolumbiafisheries.org

