

Synthesizing Yakima Basin Fish Passage Barrier Data



Jason McCormick

Yakima Basin Fish and Wildlife Recovery Board

Authors: Jason McCormick and Alex Conley

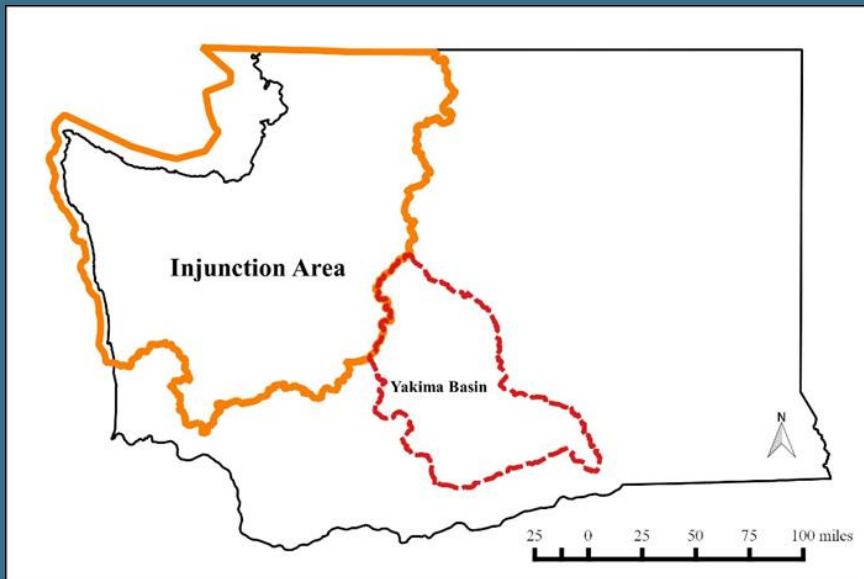
GOALS

- **To create a centralized data set of all available fish passage data inventories in the Yakima Basin.**
- **Identify repaired barriers and document progress.**
- **Assess available data in each priority watershed.**
- **Summarize results in a comprehensive synthesis report.**
- **Develop a list of recommendations and next steps.**

SUMMARY

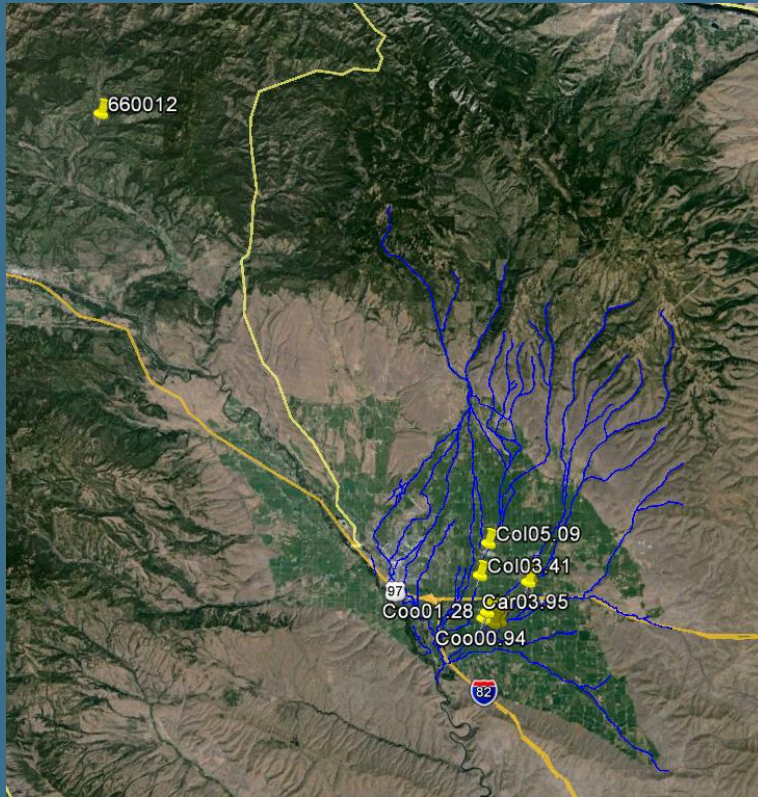
- **Fish barrier court case background.**
- **Available fish passage barrier data sources.**
- **Selected fish passage barrier data sources.**
- **Fish passage barrier analysis.**
- **Priorities.**
- **Next steps and recommendations.**

THE CULVERT CASE



- **United States v. Washington**
 - **Filed 2001**
- **Permanent injunction on state-owned culverts (fish barriers) since 2013.**
- **On appeal by Washington State.**
- **Yakima Basin not party to injunction area.**
- **State agencies are moving ahead as if the injunction stands and working across the state.**
- **Fish Barrier Removal Board. Est. 2014.**

ADDITIONAL FUNDING



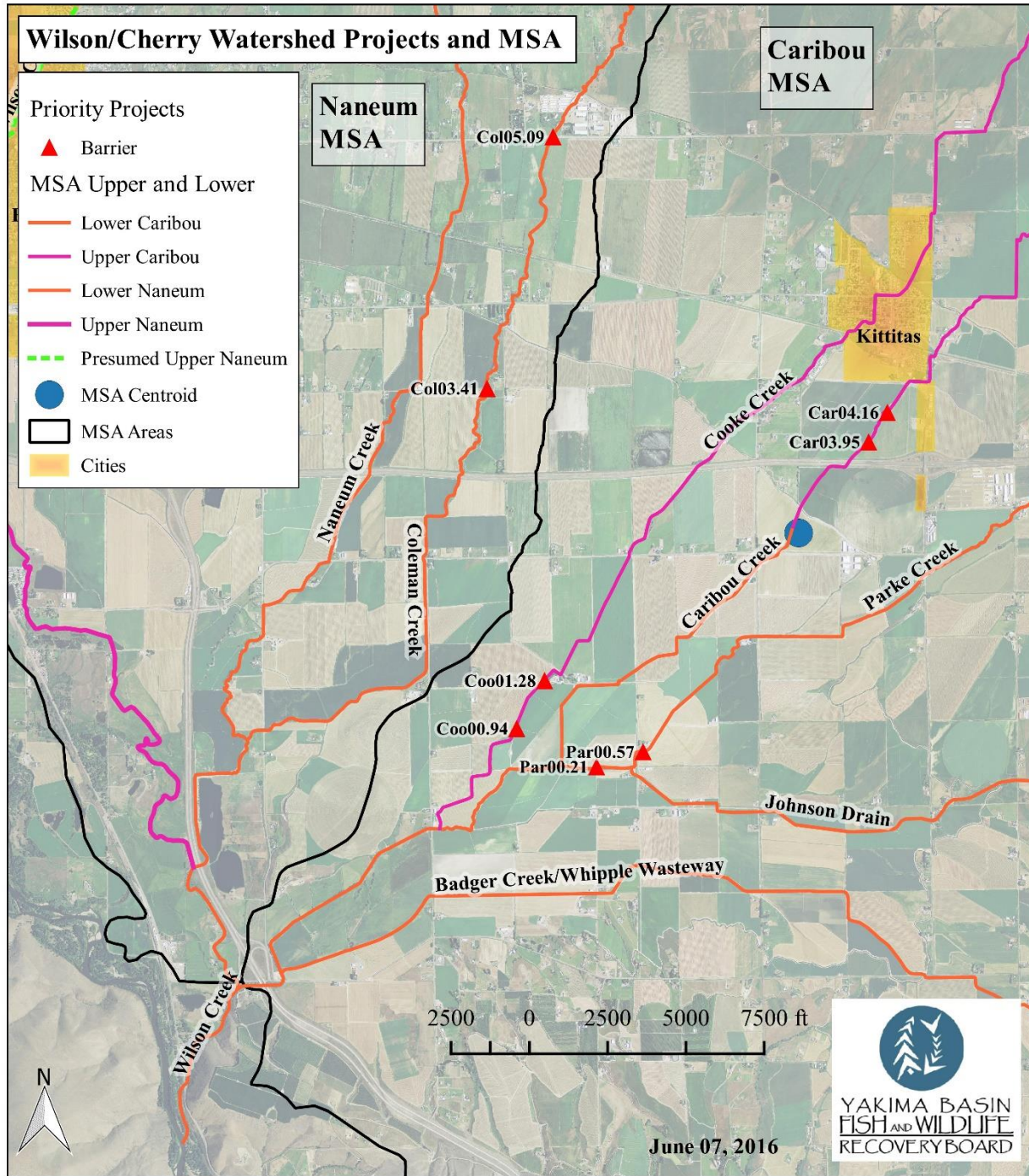
- **Fish Barrier Removal Board**
- **2017/18 Biennium**
- **Two pathways:**
 - **Watershed Pathway**
 - **Coordinated Project Pathway**
- **Priority projects:**
 - **8 watershed pathway**
 - **1 coordinated pathway**
- **Total ask: \$4.5 m**
- **Review on Thursday, June 16th**

Wilson/Cherry Watershed Projects and MSA

Caribou
MSA

Naneum
MSA

- Priority Projects
- ▲ Barrier
- MSA Upper and Lower
- Lower Caribou
 - Upper Caribou
 - Lower Naneum
 - Upper Naneum
 - Presumed Upper Naneum
- MSA Centroid
- ▭ MSA Areas
- Cities



June 07, 2016

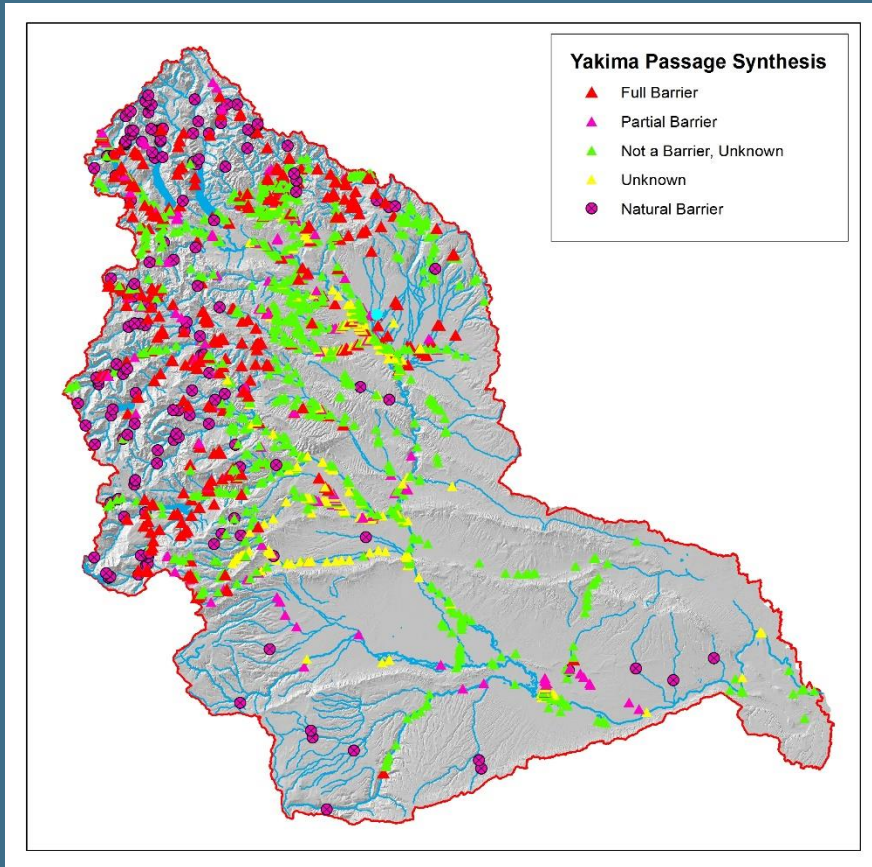


BARRIER DATA SOURCE RANKING

- **Fish Passage Data (Maintained)**
- **Fish Passage Data (Not Maintained or In Development)**
- **Some Fish Passage Data (Not Focus)**
- **Information Only**

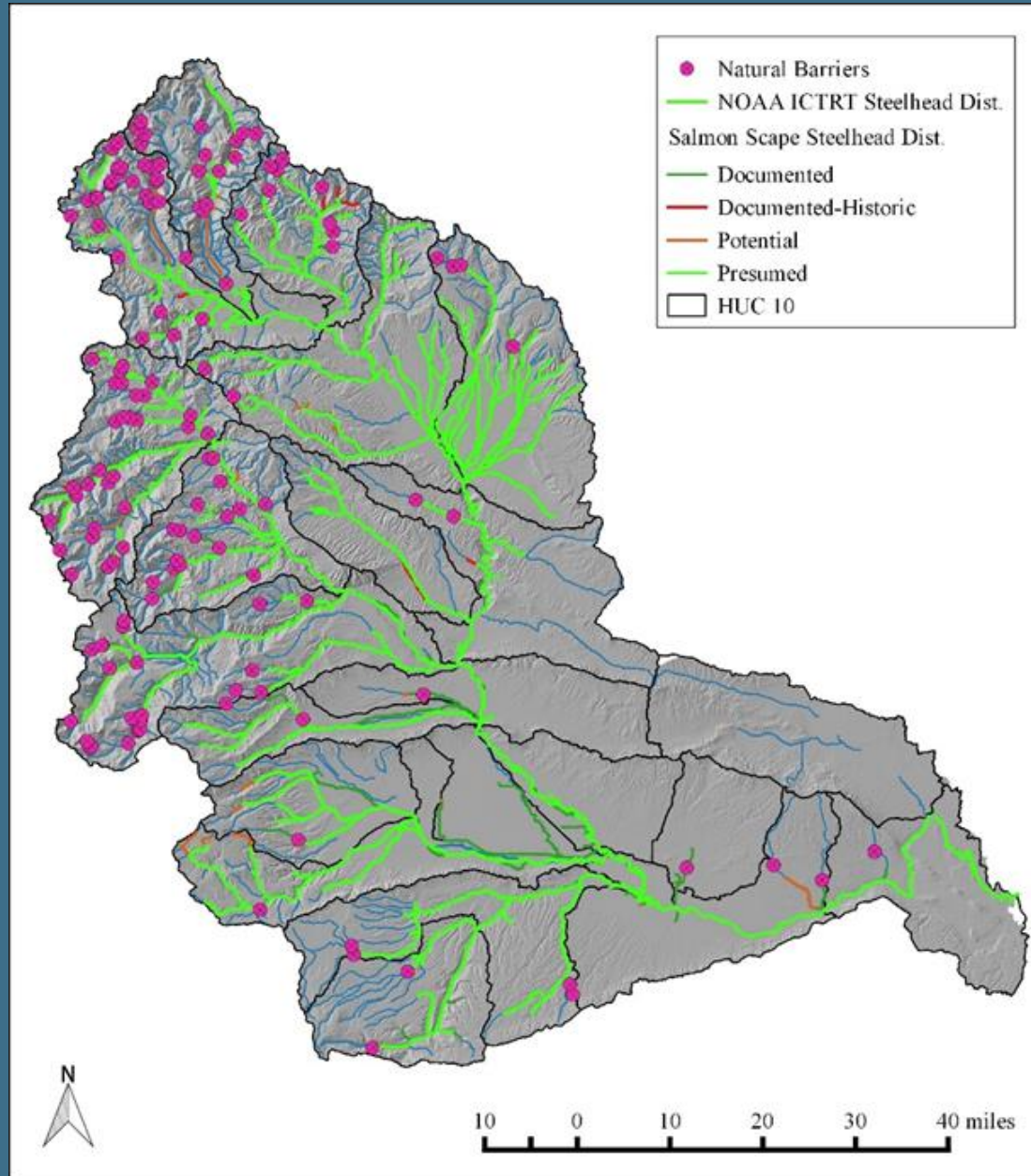
Data Source/Type	Fish Passage Data (Maintained)	Fish Passage Data (Not Maintained or In Development)	Some Fish Passage Data (Not Focus)	Information Only
WDFW & WSDOT (Fish Barrier Removal Board)/FPDSI	X			
WADNR/RMAP	X			
Forest Service/Barrier Assessment	X			
YBFWRB Passage Animation/Expert Opinion	X			
YTAHP: NYCD & KCCD/Barrier Data	*X			
WDFW/SaSi		X		
WDFW/SSHAIP		X		
Kittitas County/ Naneum Wilson Cherry Watershed Assessment		X		
USFWS/Barrier Data		X		
Ecology/Dams			X	
Yakima County/Culverts			X	
Kittitas County/Culverts			X	
Ecology/GWIS				X
Totals	5	4	3	1

DATA SUMMARY

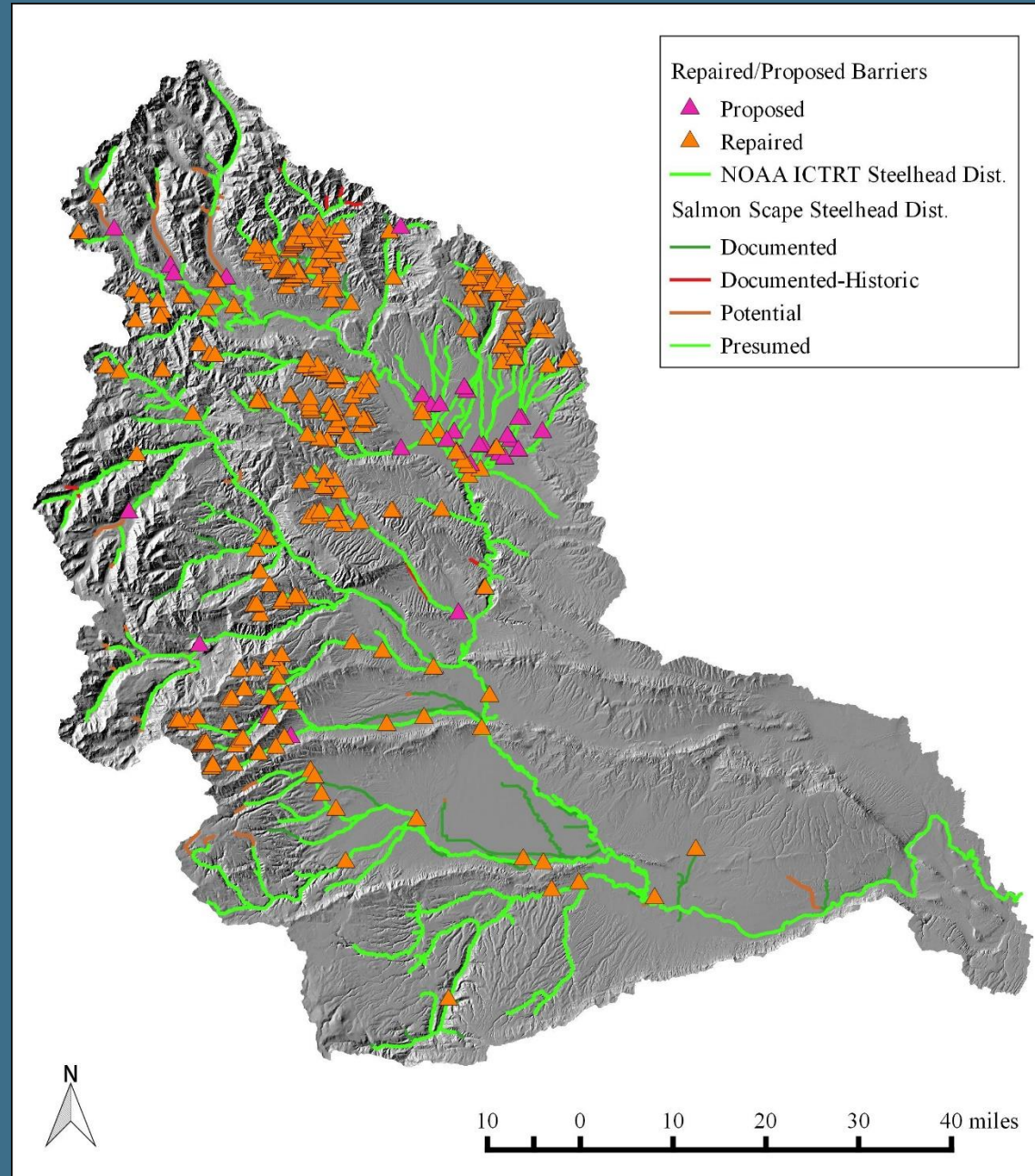


- **Synthesis analysis based on the following:**
 - **WDFW/WSDOT FPDSI**
 - **WDNR RMAP**
 - **Forest Service 2002/2003**
 - **YBFWRB Expert Opinion**
- **Assessment using buffers around modeled habitat layers.**

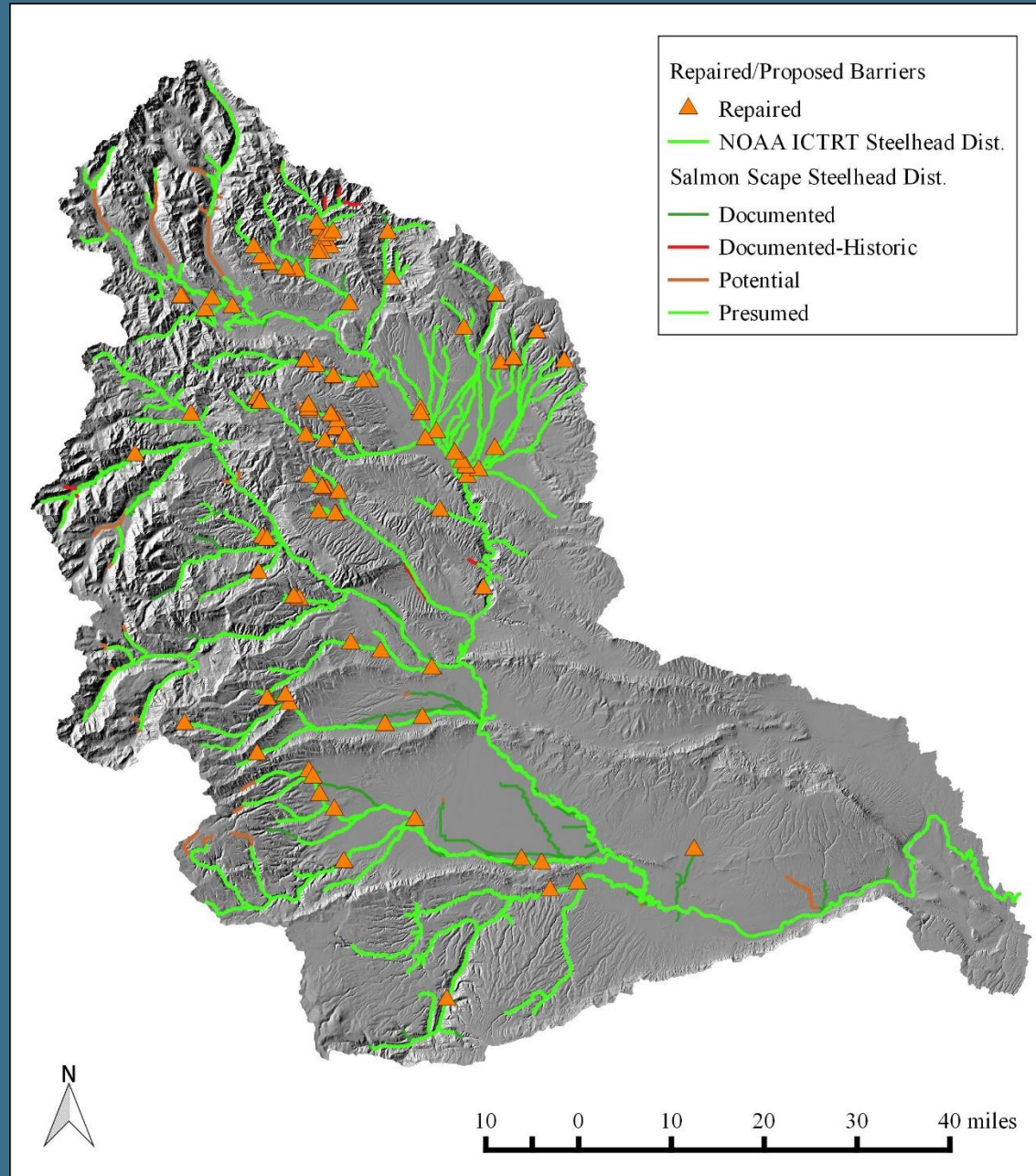
INVENTORIED NATURAL BARRIERS

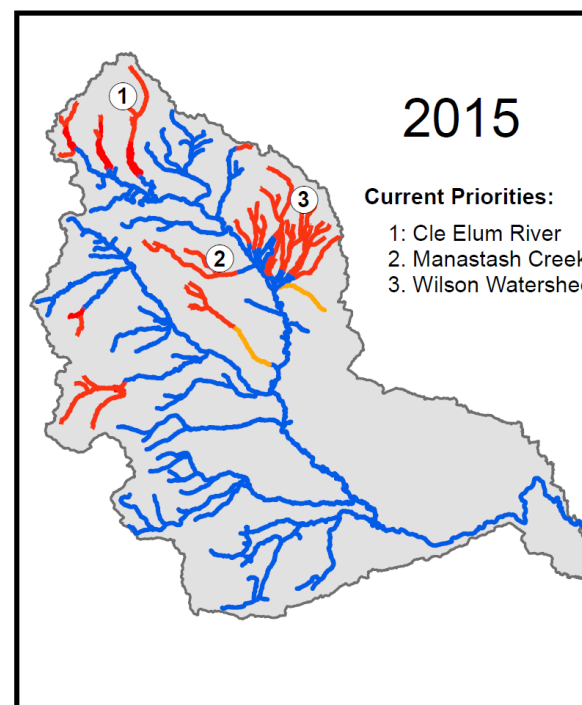
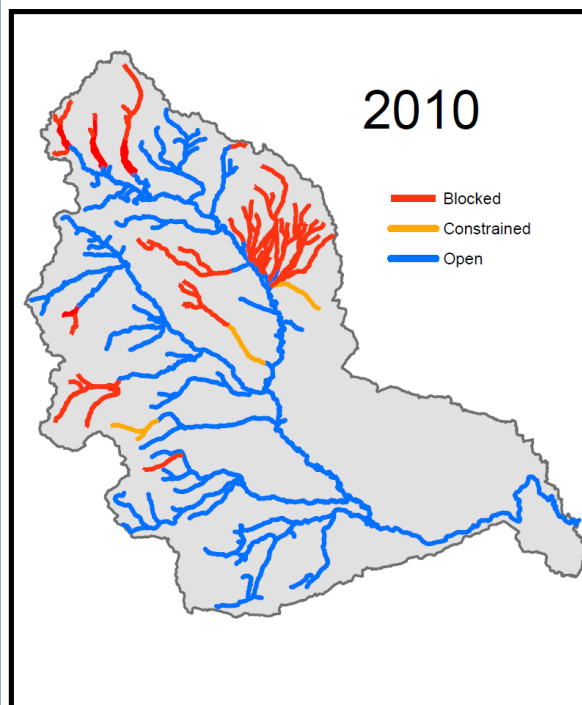
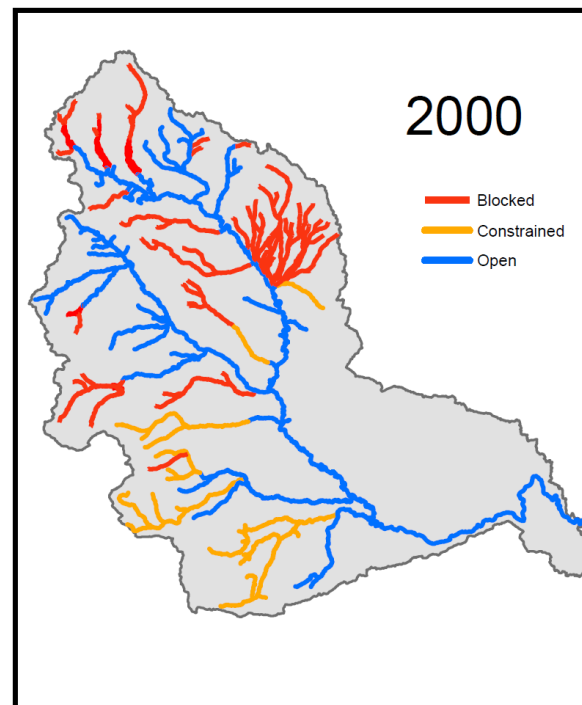
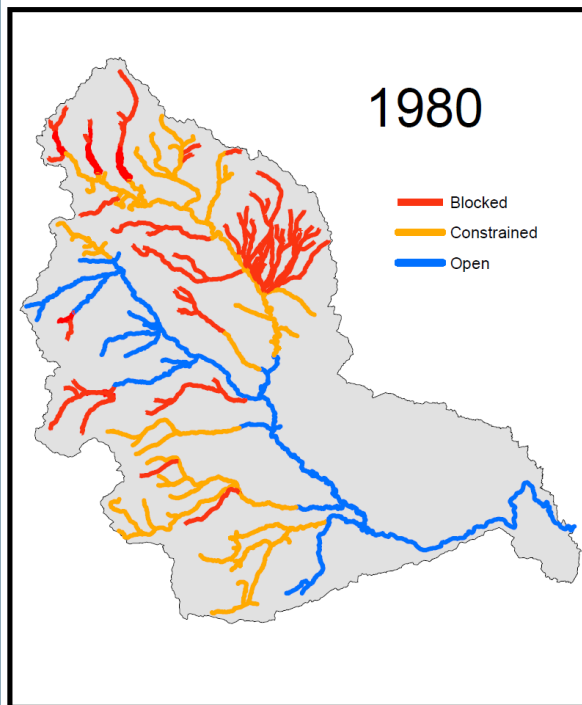


INVENTORIED REPAIRED BARRIERS

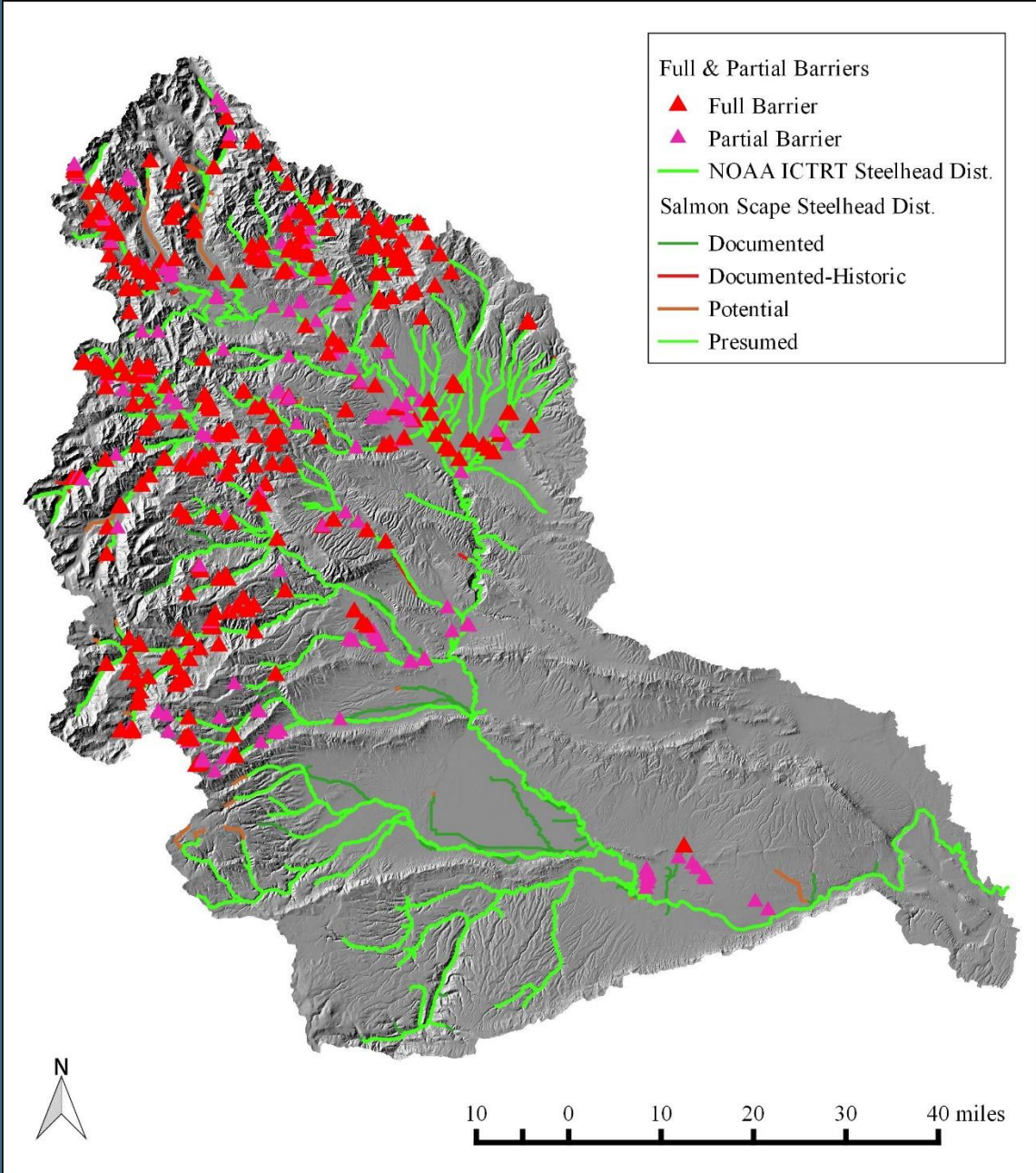


INVENTORIED REPAIRED BARRIERS STEELHEAD HABITAT

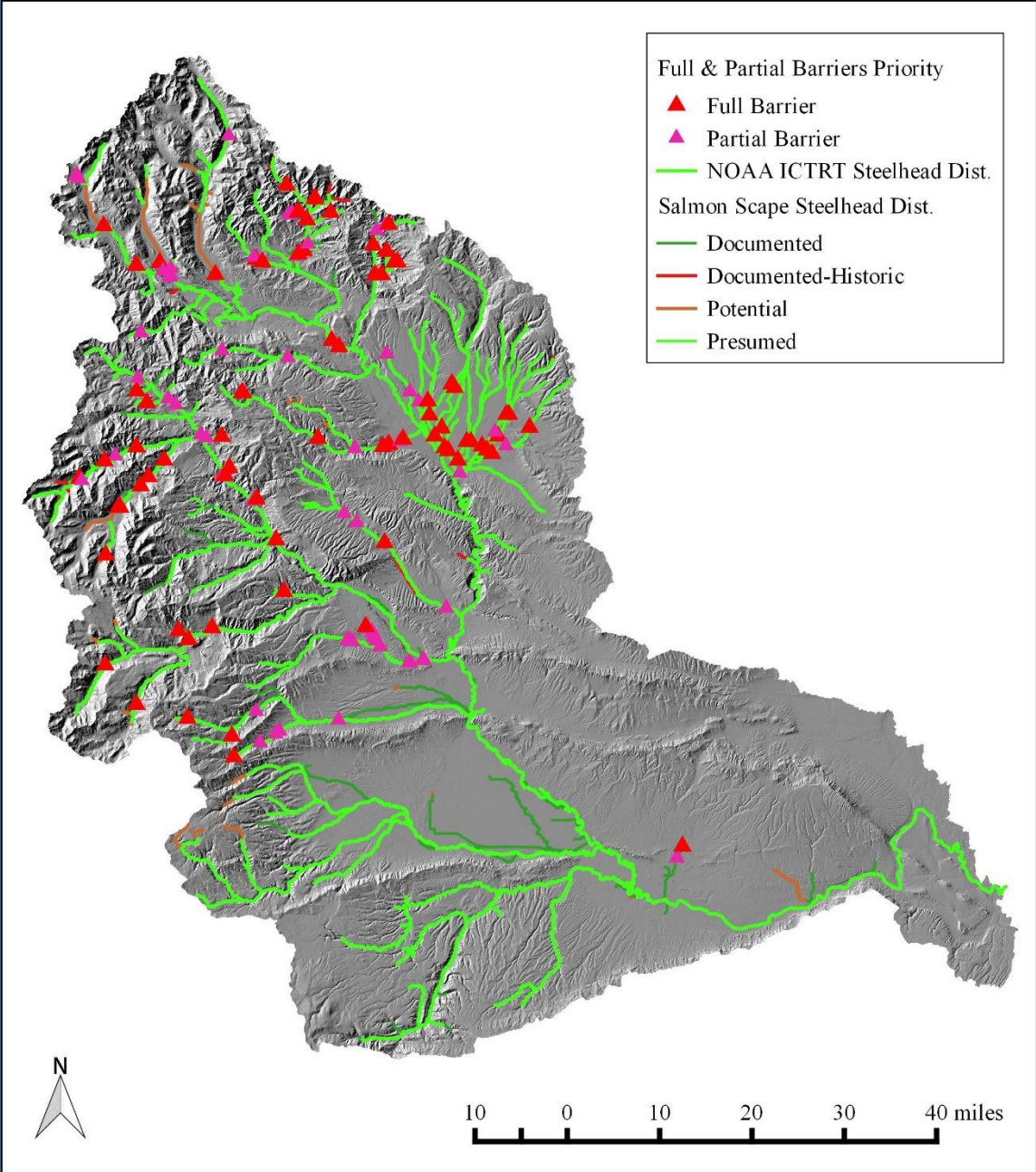




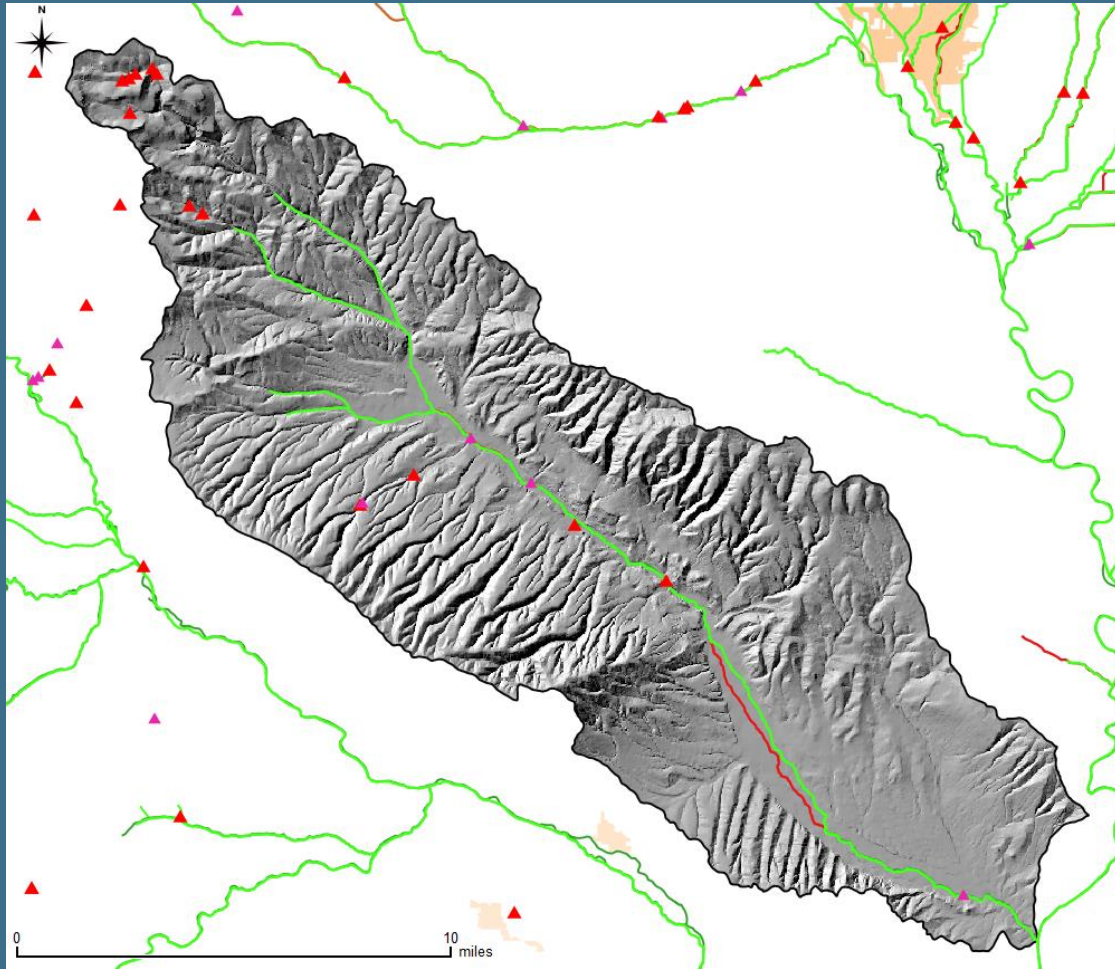
INVENTORIED FULL AND PARTIAL BARRIERS



INVENTORIED BARRIERS BY PRIORITY WATERSHED



PRIORITY WATERSHED BARRIERS INVENTORY



Watershed	Full Barrier	Partial Barrier
Ahtanum Creek	10	25
American River	4	4
Big Creek	-	2
Cowiche Creek	4	16
Deep Creek	2	1
Gold Creek	9	7
Kachess River	5	2
Little Naches	32	6
Manastash Creek	12	10
Naneum/Wilson Watershed	25	3
NF Tieton	1	-
SF Tieton	1	18
Nile Creek	4	2
Rattlesnake Creek	6	1
Satus Creek	-	-
Swauk Creek	30	2
Taneum Creek	2	4
Teanaway River	44	33
Toppenish Creek	-	-
Upper Cle Elum River	14	3
Wenas Creek	12	5

NEXT STEPS

- **Pilot barrier watershed review.**
- **Conduct barrier watershed review on priority watersheds.**
- **Develop a tiered list of priority watersheds with additional assessment needs.**
- **Coordinate with WDFW or qualified entities to perform barrier assessments.**
- **Finalize findings into synthesis report.**
- **Make dataset available to those interested.**

RECOMMENDATIONS

- **Encourage and promote WDFW's FPDSI as the central database.**
- **Migrate changes, updates and additions to WDFW's FPDSI.**
- **Encourage WDFW to include RMAP and FS Culvert Surveys into FPDSI.**
- **Develop approaches to completing watersheds that are nearly DONE.**

JASON'S RESTORATION CONTINUUM

Not Done

Done



Source disclaimer: images copied from Google search.



QUESTIONS

JASON D. McCORMICK

JMCCORMICK@YBFWRB.ORG

509.949.7297