



WASHINGTON WATER TRUST

Working to restore rivers and streams in Washington

Winter Water: A hot topic for cold fish.

June 18, 2009

Jason McCormick
Project Manager

Washington Water Trust works to improve and protect stream flows and water quality throughout Washington. We develop innovative, market based transactions and cooperative partnerships to increase stream flows that benefit agriculture, fisheries, wildlife and recreation.



AGENDA

- Introduction: Washington Water Trust
- Stockwater
- Winter Flow Solutions
- Benefits
- Results
- Discussion
- Questions



WWT: WHAT WE DO

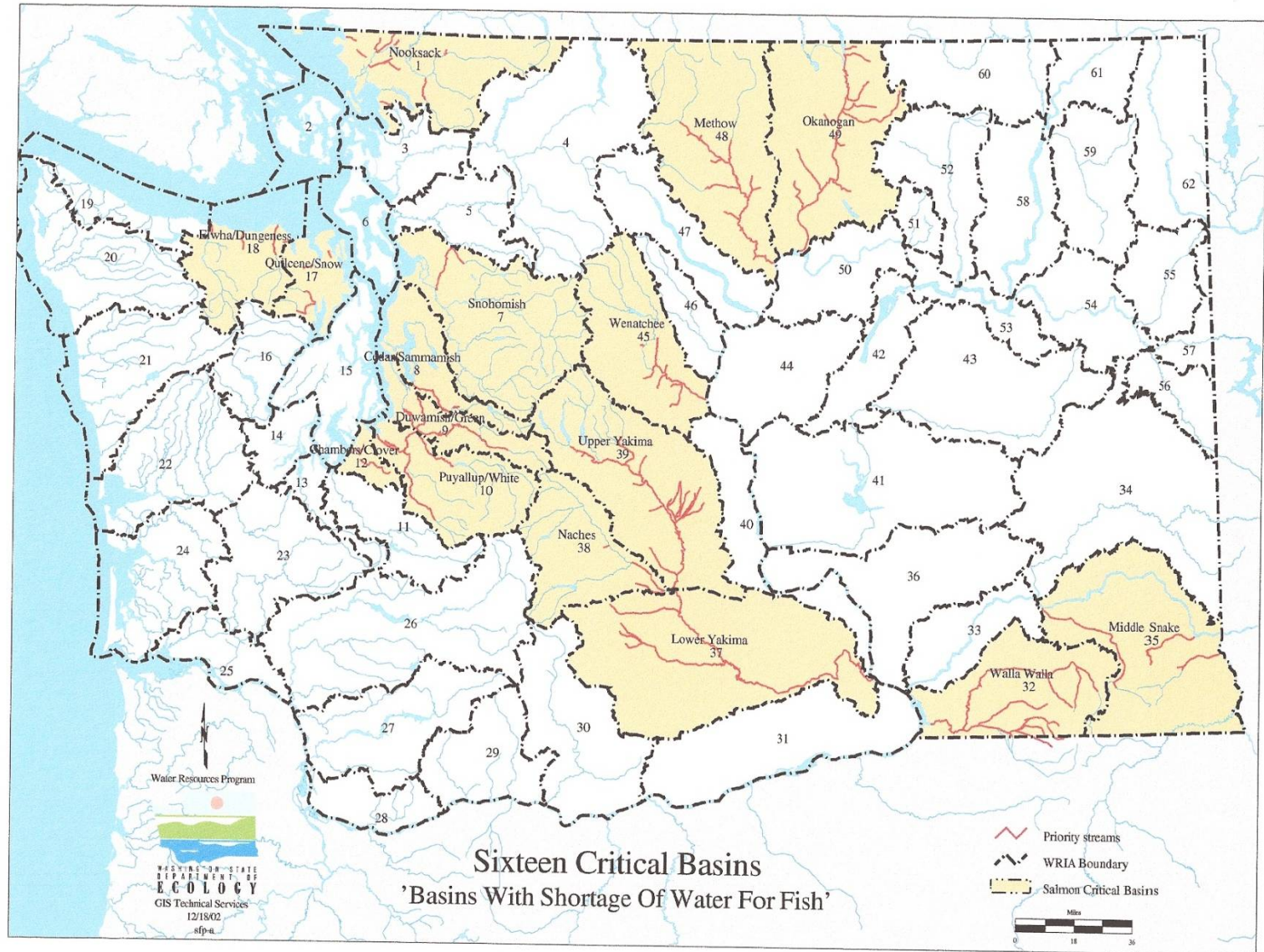
- Stream restoration through flow enhancement
 - 16 critical “low flow” basins – limiting factor
 - Water withdrawal is one cause of low flow
- 11 years in business (founded 1998), 30 years collective experience,
- Success = balance & flexibility
- Work with community values and small tributaries
- Marketplace tools



WWT FUNDING SOURCES

- “Win-Win” – satisfied people – healthy streams
- Solid sources of funds for water transfers
 - Columbia Basin Water Transaction Program
 - Columbia River Water Management Program
 - Department of Ecology
 - Mitigation dollars
 - Private grants





Sixteen Critical Basins

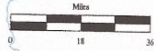
'Basins With Shortage Of Water For Fish'

Water Resources Program



WASHINGTON STATE
DEPARTMENT OF
ECOLOGY
GIS Technical Services
12/18/02
-sfp-a-

- Priority streams
- WRIA Boundary
- Salmon Critical Basins



STOCKWATER: DEFINED AND USES

- What is Stockwater?
- When is Stockwater important to livestock?
- When is Stockwater important to fish?
- Collaborative solution for the co-existence of livestock and fish?



WINTER FLOW SOLUTIONS

- Yakima Steelhead Recovery Plan
 - Flow limiting factors in most major tributaries
- Funders willing to fund projects
- Willing landowners
- Collaborative solutions



BIOLOGICAL AND GEOMORPHIC BENEFITS

- Increased winter base flows
- Increased Fish Passage
 - Side benefit: winter barrier removal
- Increased wetted area
- Improved geomorphic regimes
- Potentially warmer water temperatures (spring fed systems)



RESULTS – TANEUM CREEK

- Winter flow restoration coordinated with summer flow restoration
- Barrier removal and fishway construction on existing diversions
- Fishery re-introduction
- Project Partners:
 - Yakama Nation
 - WDFW
 - BOR
 - USFWS
 - KCT



DISCUSSION

- A flow restoration tool that can be applied to other systems in the Yakima Basin
- Applicable to other areas in Eastern Washington
- Western US?



REFERENCES

- Washington State Department of Ecology. <<http://www.ecy.wa.gov/PROGRAMS/wr/instreamflows/Images/pdfs/I6basinsmap.pdf>> June 9, 2009.
- Yakima Basin Fish and Wildlife Recovery Board. “Yakima Steelhead Recovery Plan.” August 18, 2008.
- National Marine Fisheries Service, Northwest Region. “Middle Columbia Steelhead Recovery Plan.” September 2008

QUESTIONS & DISCUSSION

