

Upper Yakima Steelhead

Zack Mays

WDFW

Gabe Temple

Ryan Fifield

Ryan Steele

Anthony Fritts

Tim Webster

Trenton De Boer

Scott Coil

Zach Lessig

Cade Lilquist

William Meyer

Brent Renfroe

Jennifer Nelson

YN

Chris Frederikson

Dave Lind

Bill Bosch

Mark Johnston

Todd Newsome

FWS

Pat Monk

KCCD

Sherry Swanson



Upper Yakima Steelhead

Zack Mays

WDFW

Gabe Temple
Ryan Fifield
Ryan Steele
Anthony Fritts
Tim Webster
Trenton De Boer
Scott Coil
Zach Lessig
Cade Lilquist
William Meyer
Brent Renfroe
Jennifer Nelson



Tensley McKenna Mays

5-19-2014

YN

Chris Frederikson
Dave Lind
Bill Bosch
Mark Johnston
Todd Newsome

FWS

Pat Monk

KCCD

Sherry Swanson

Overview

- Spatial Distribution
- Obstacles
- Spawning interactions (Who's your daddy?)

General Info

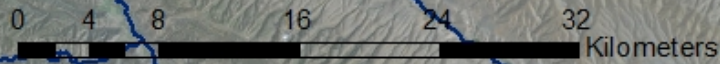
- 33 females (33 redd locations), 15 males (34 redd locations) successfully tracked above Roza
- 369 steelhead (259 F, 110 M)...70% Female
- 1189 RBT (1016 F, 173 M)....85% Female
- Overall higher spatial distribution in tribs
- Resident O mykiss with similar migrations

Upper Yakima Basin

Easton

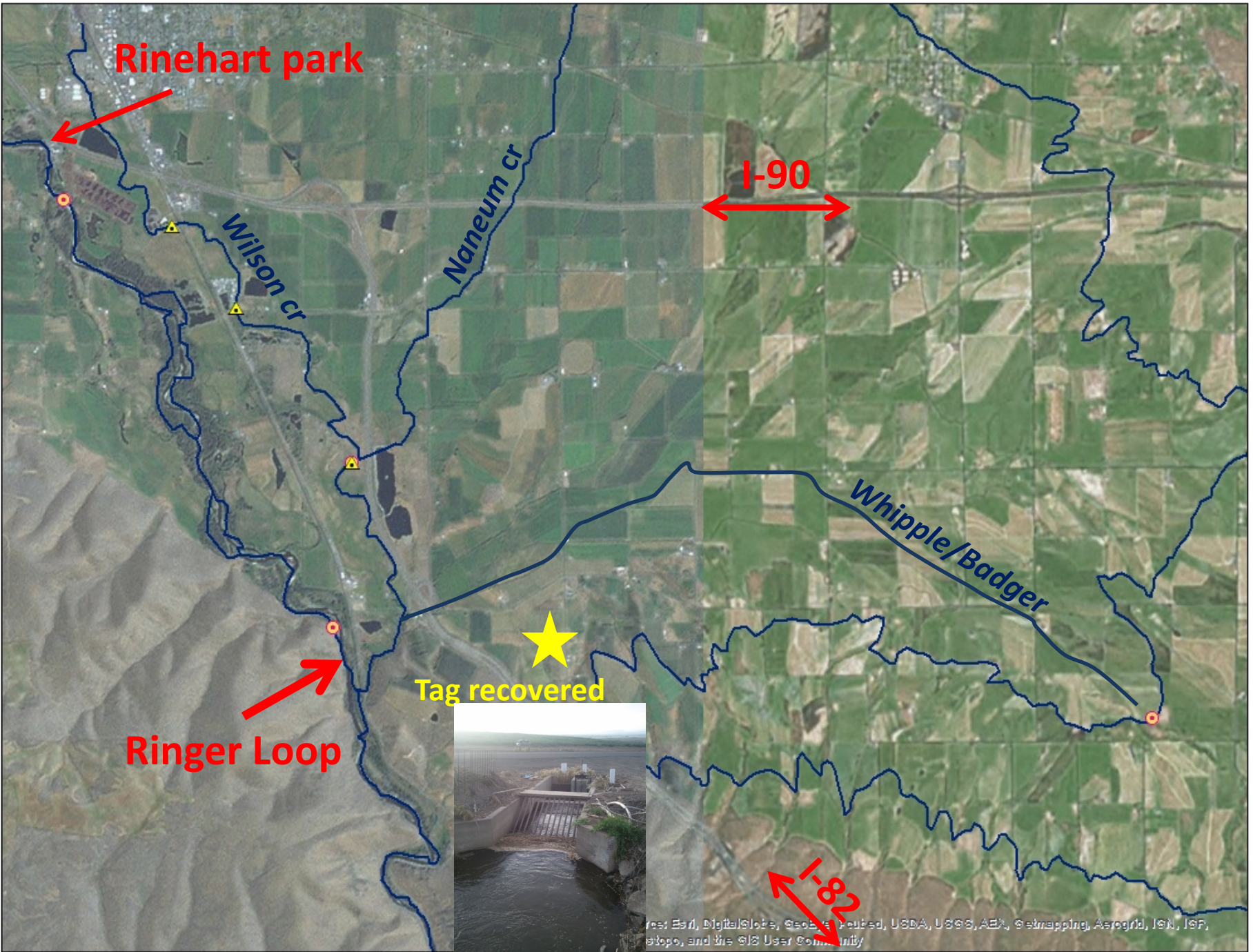
Town Diversion

Roza



Source: Esri, DigitalGlobe, GeoEye, IGN, GeoEye, Lufers, USDA, USDA, Aerial, Getmapping, Aerogrid, IGN, IGF, swisstopo, and the GIS User Community





Rinehart park

I-90

Wilson cr

Naneum cr

Whipple/Badger

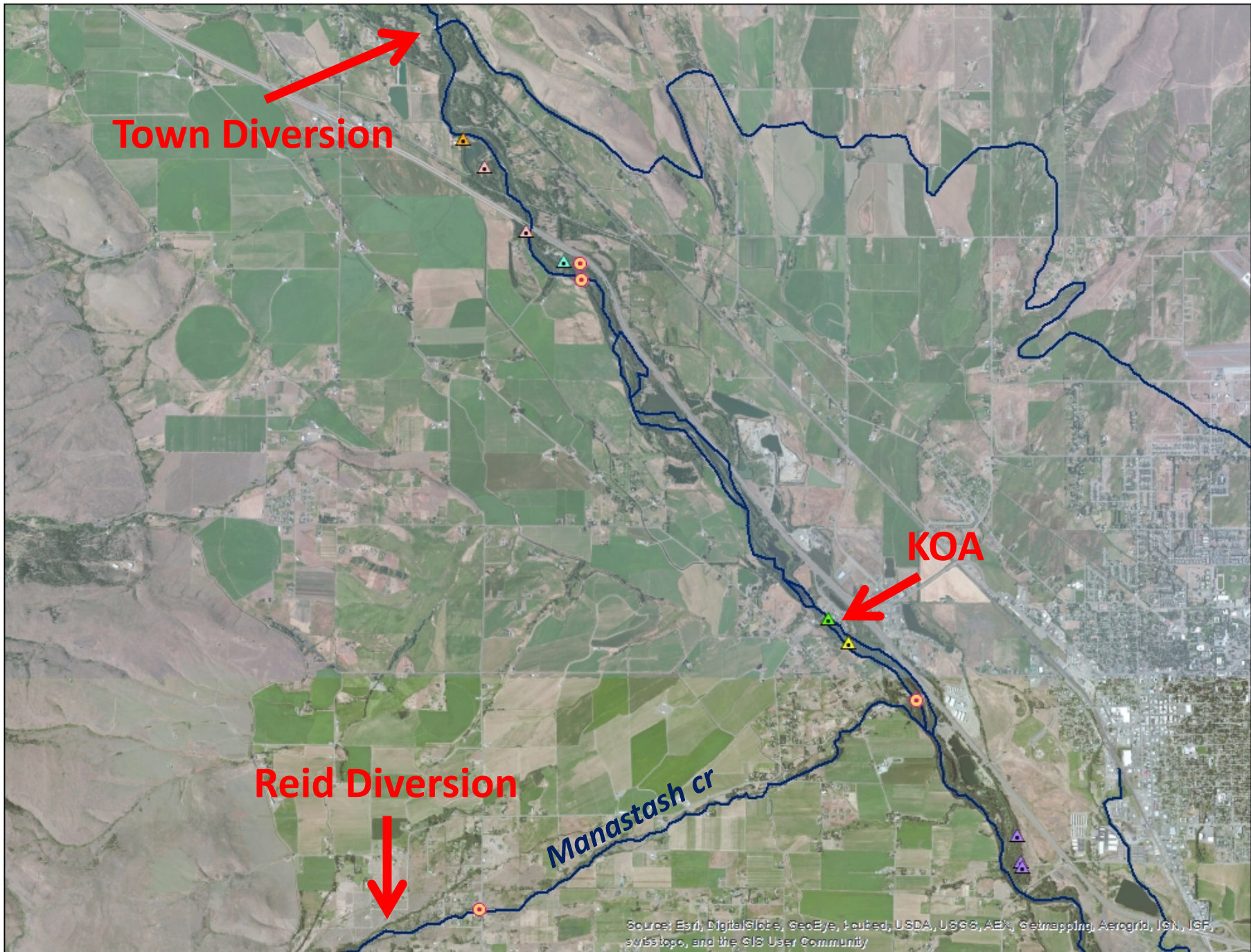
Ringer Loop

Tag recovered

I-82



res: Esri, DigitalGlobe, GeoEye, AeroGRID, USDA, USGS, AeroX, GeoMapping, AeroGRID, IGN, IGF, etopo, and the GIS User Community



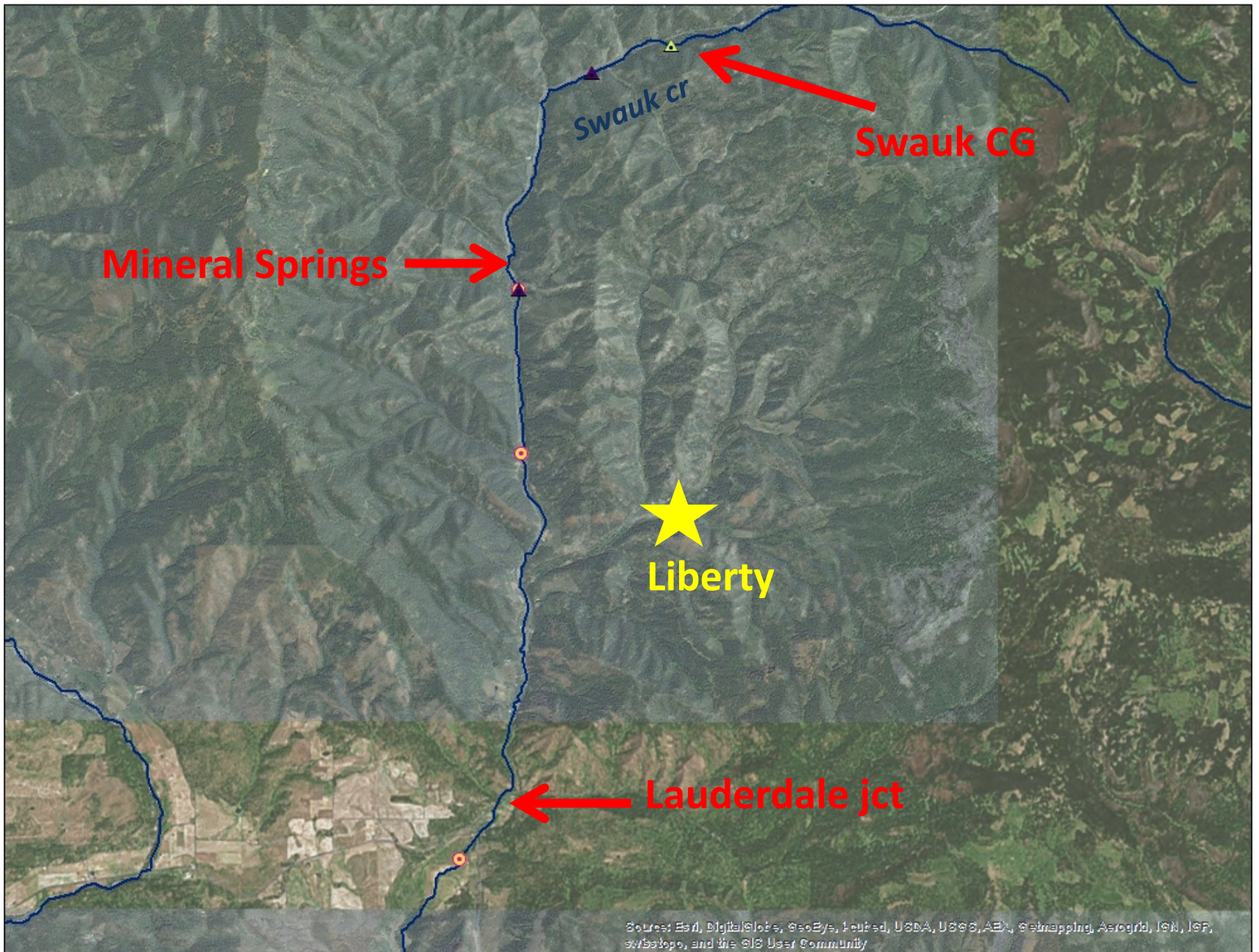
Town Diversion

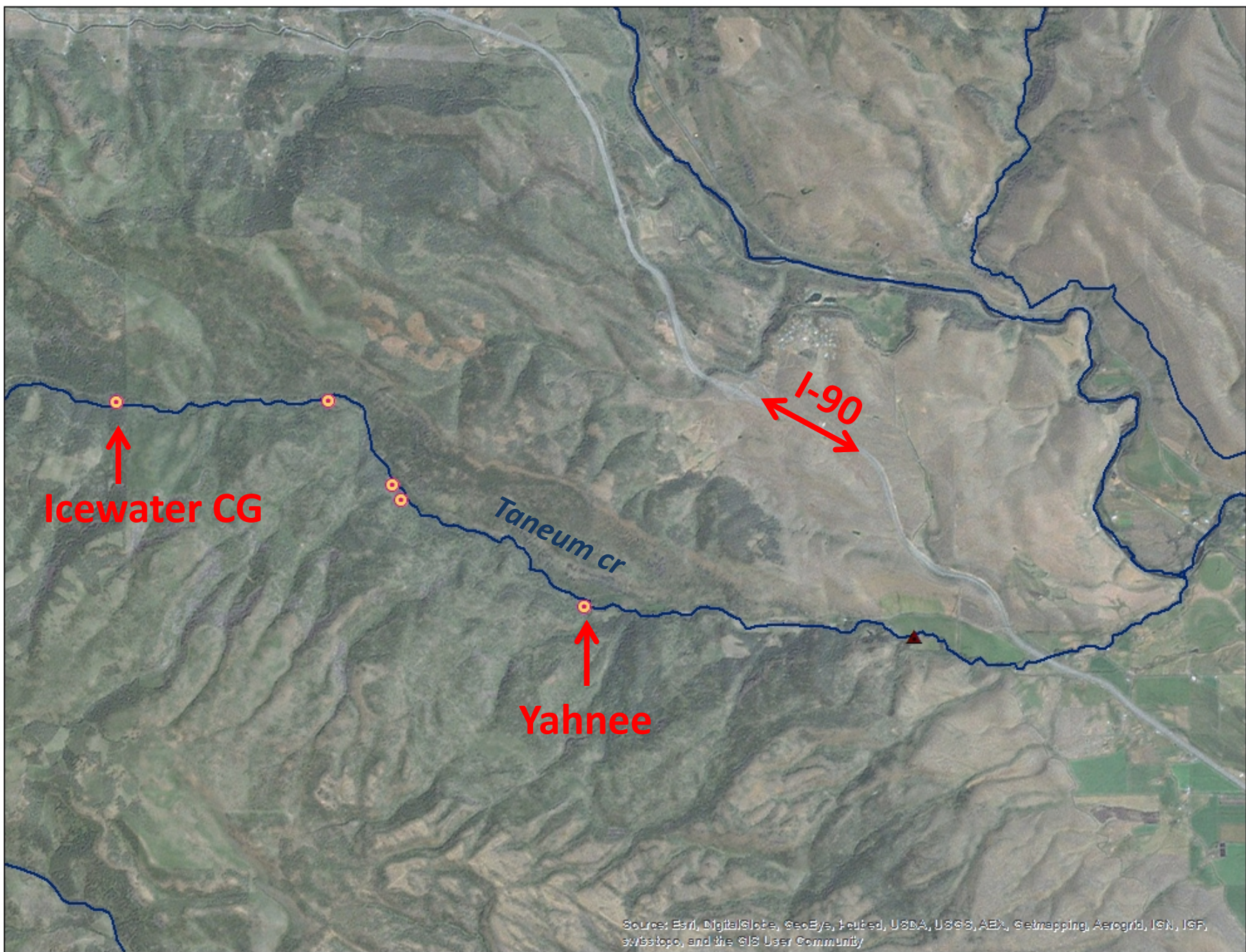
Reid Diversion

KOA

Manastash cr

Source: Esri, DigitalGlobe, GeoEye, Earthstar, USDA, USGS, AEX, Getmapping, Aerogrid, IGN, IGF, swisstopo, and the GIS User Community





Source: Esri, DigitalGlobe, GeoEye, IGN, USDA, USGS, AeroGRID, IGN, IGF, swisstopo, and the GIS User Community

Teanaway Forks



Source: Esri, DigitalGlobe, GeoEye, Earthstar, USDA, USGS, AeroGRID, IGN, IGP, swisstopo, and the GIS User Community

Potential Barrier



Paired with large resident males

Yakima river, below Easton dam



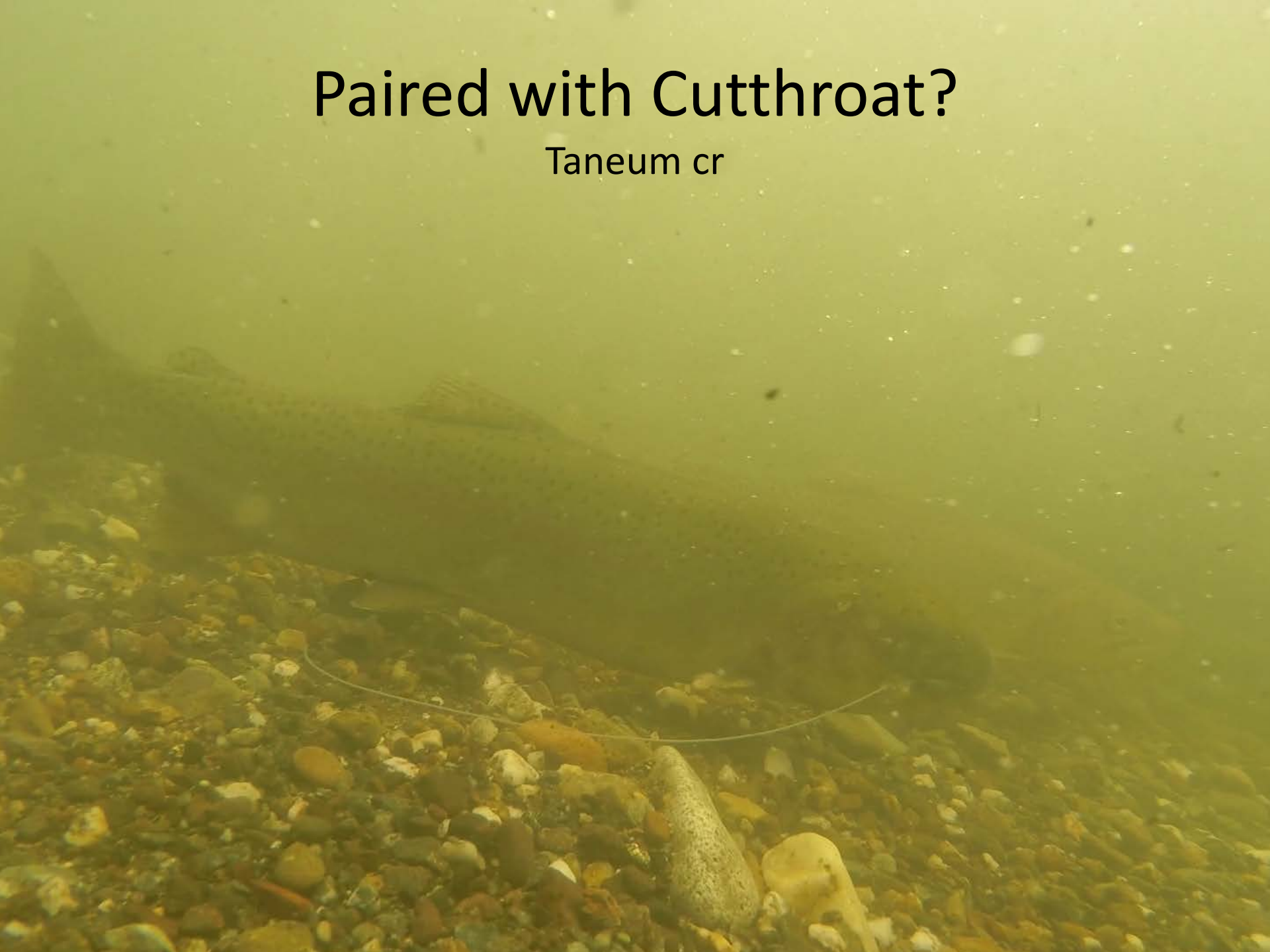
Anadomous pairing

Middle Fork Teanaway



Paired with Cutthroat?

Taneum cr





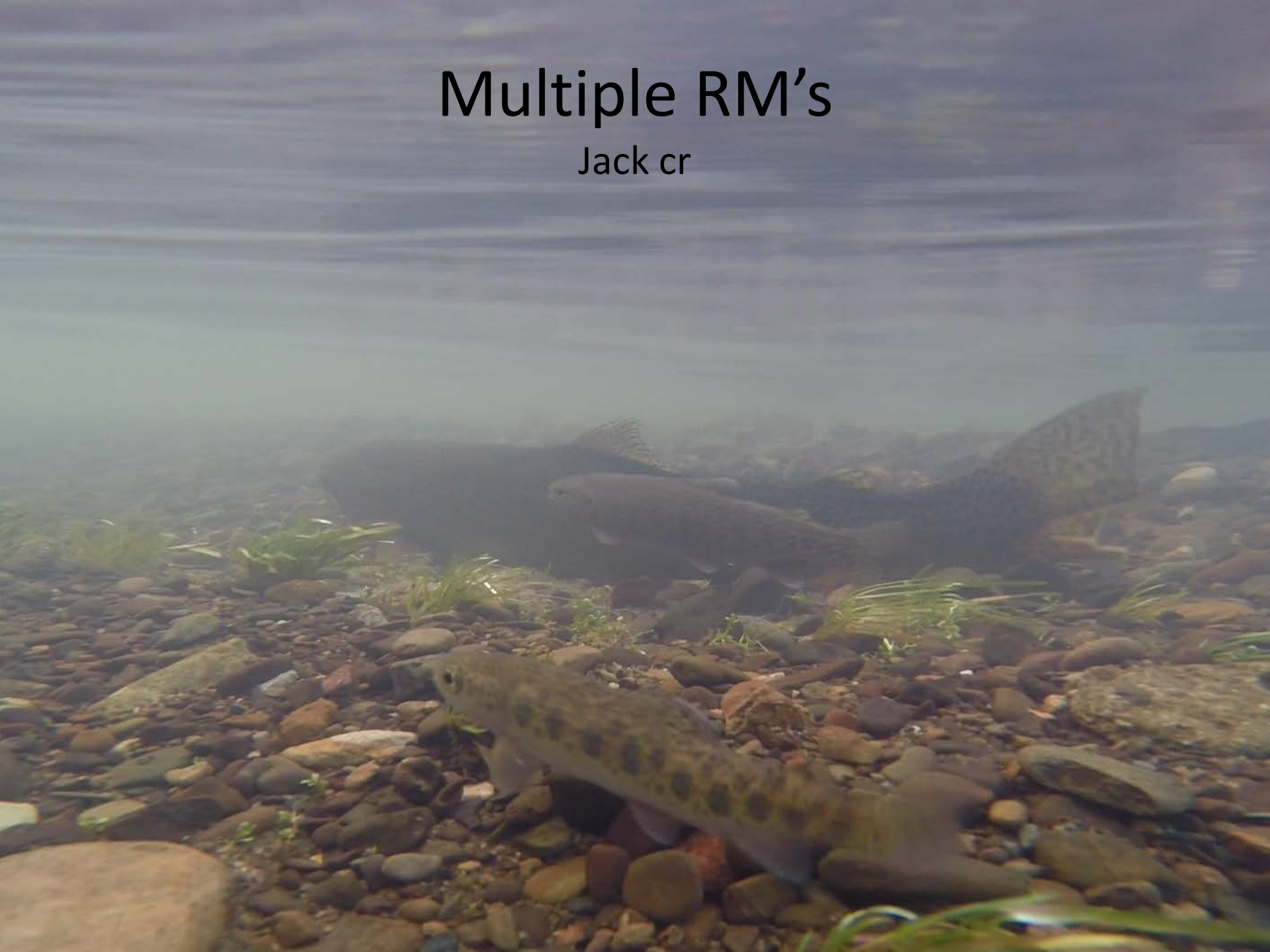
Paired with resident female

Swauk cr



Multiple RM's

Jack cr





Nile creek (not just in the upper Yak)



Little Rattlesnake



Videos

