

Upper Yakima Steelhead

Zack Mays and Gabe Temple



Overview

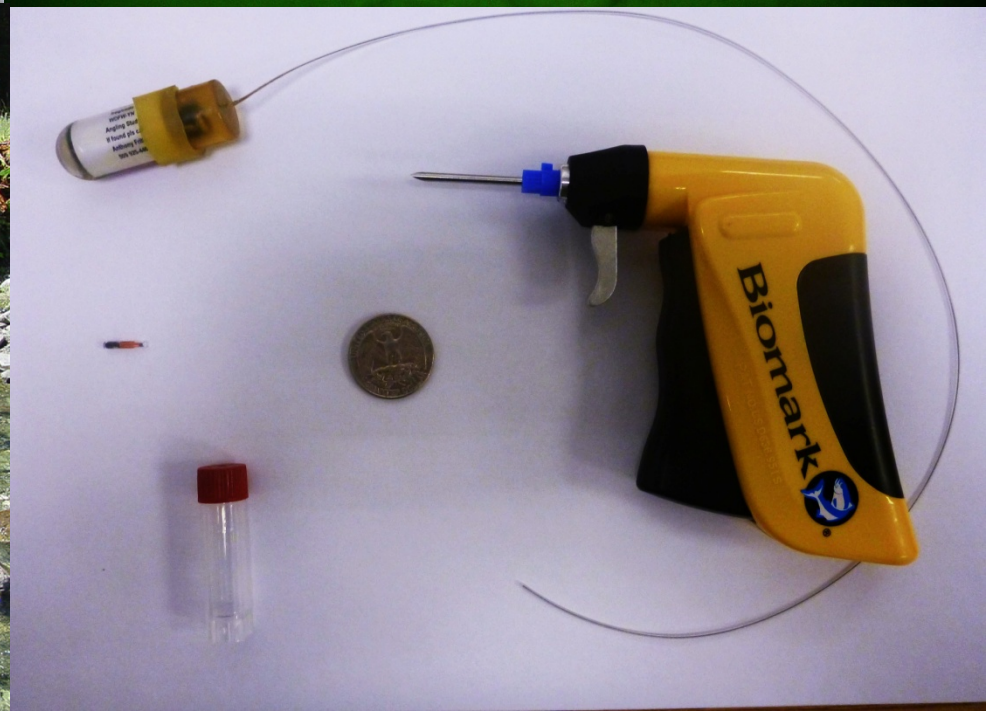
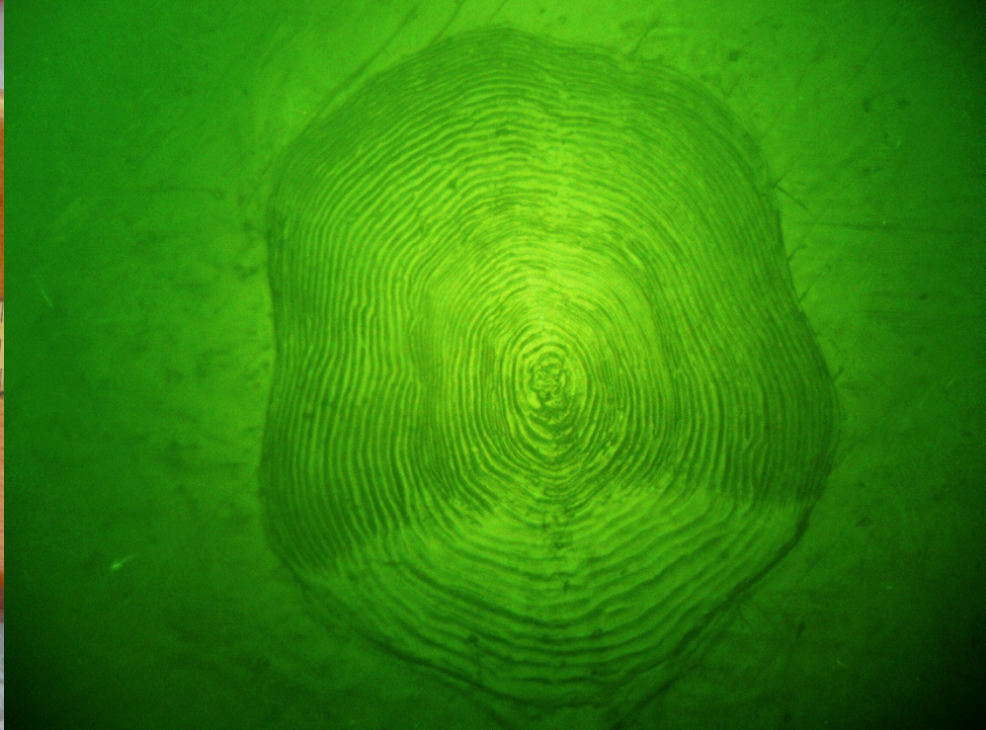
- Infrastructure/O & M
- Juvenile pit tagging/detections
- Adult pit tagging/detections
- Adult radio telemetry

Multiplexing arrays

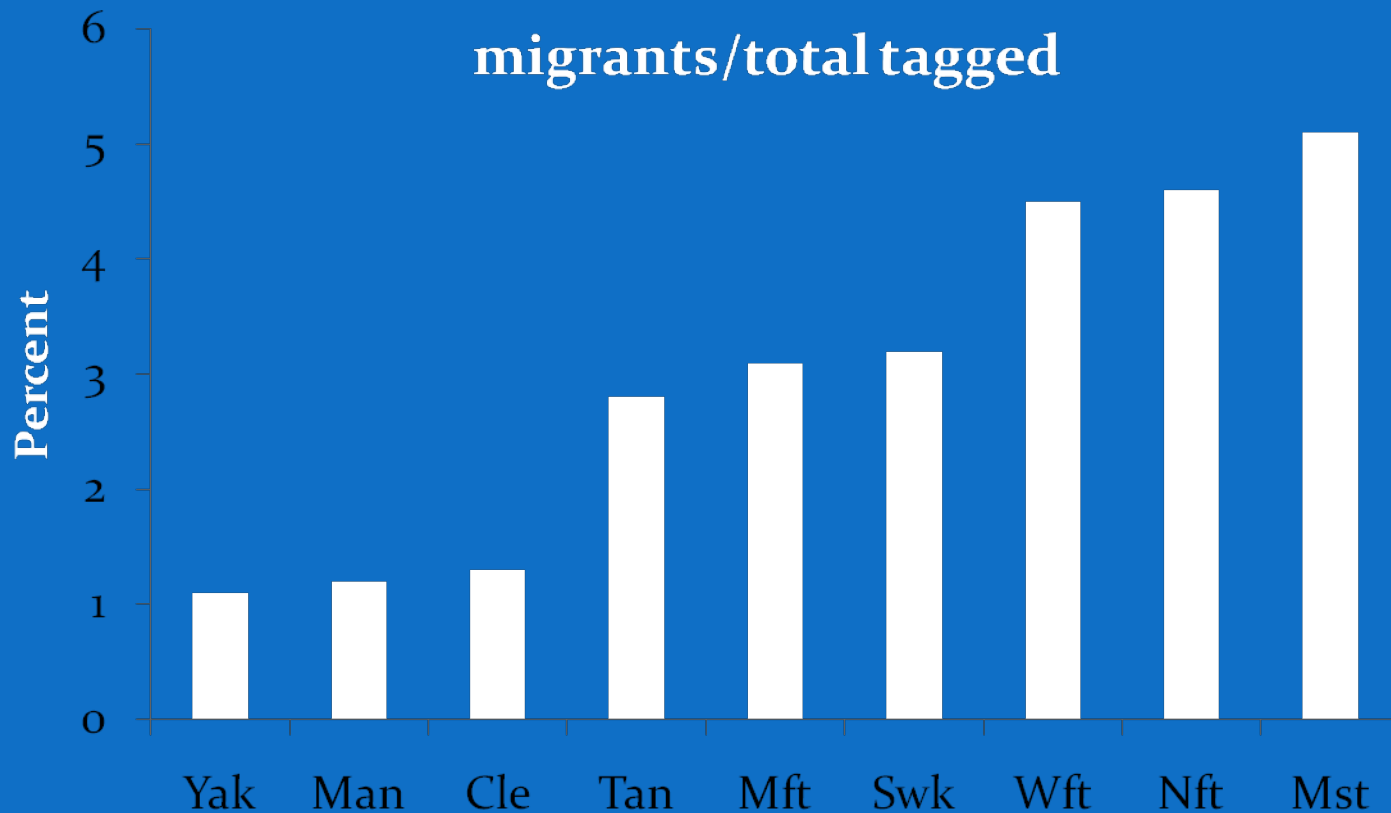


Allflex: Flat plate design

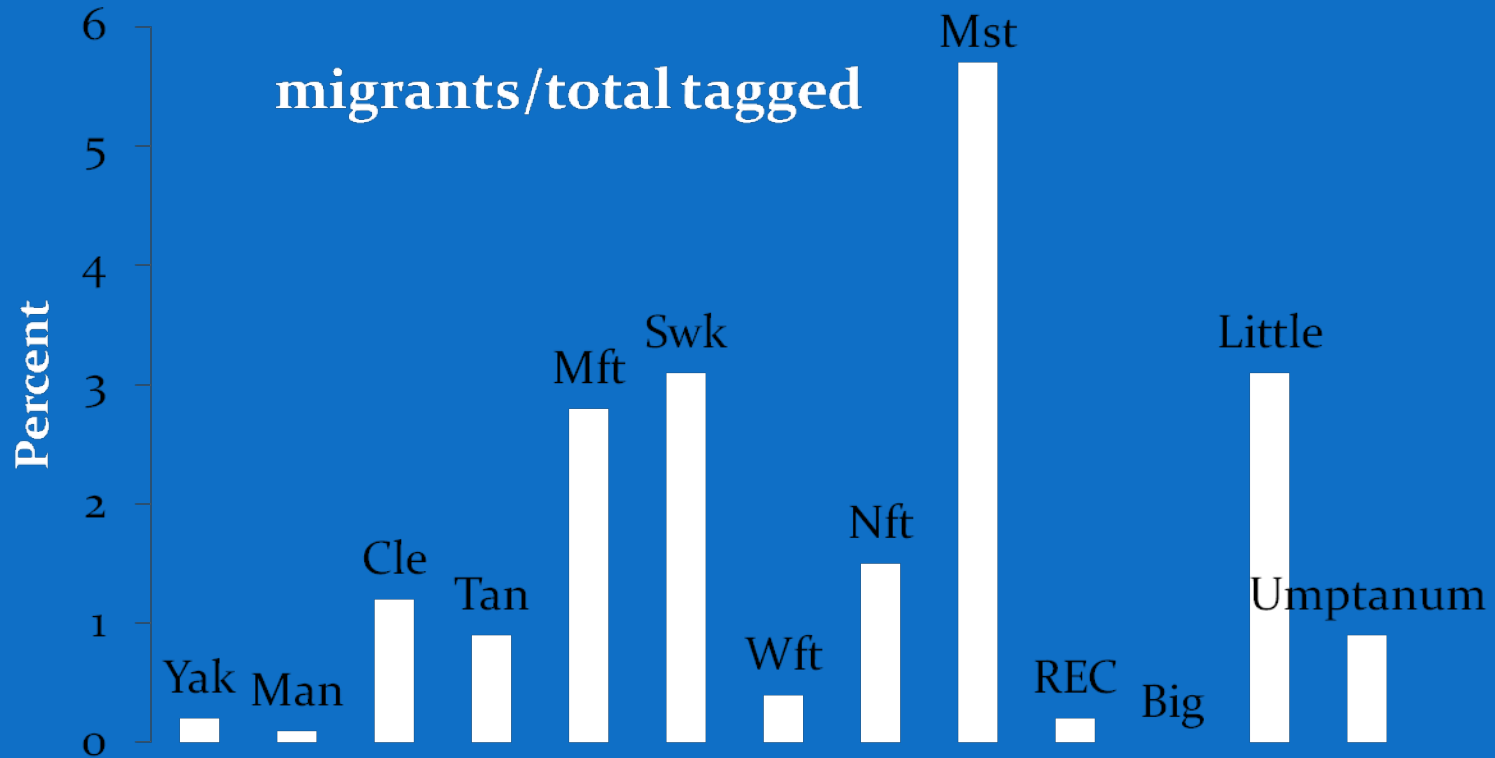




Detections in FY12



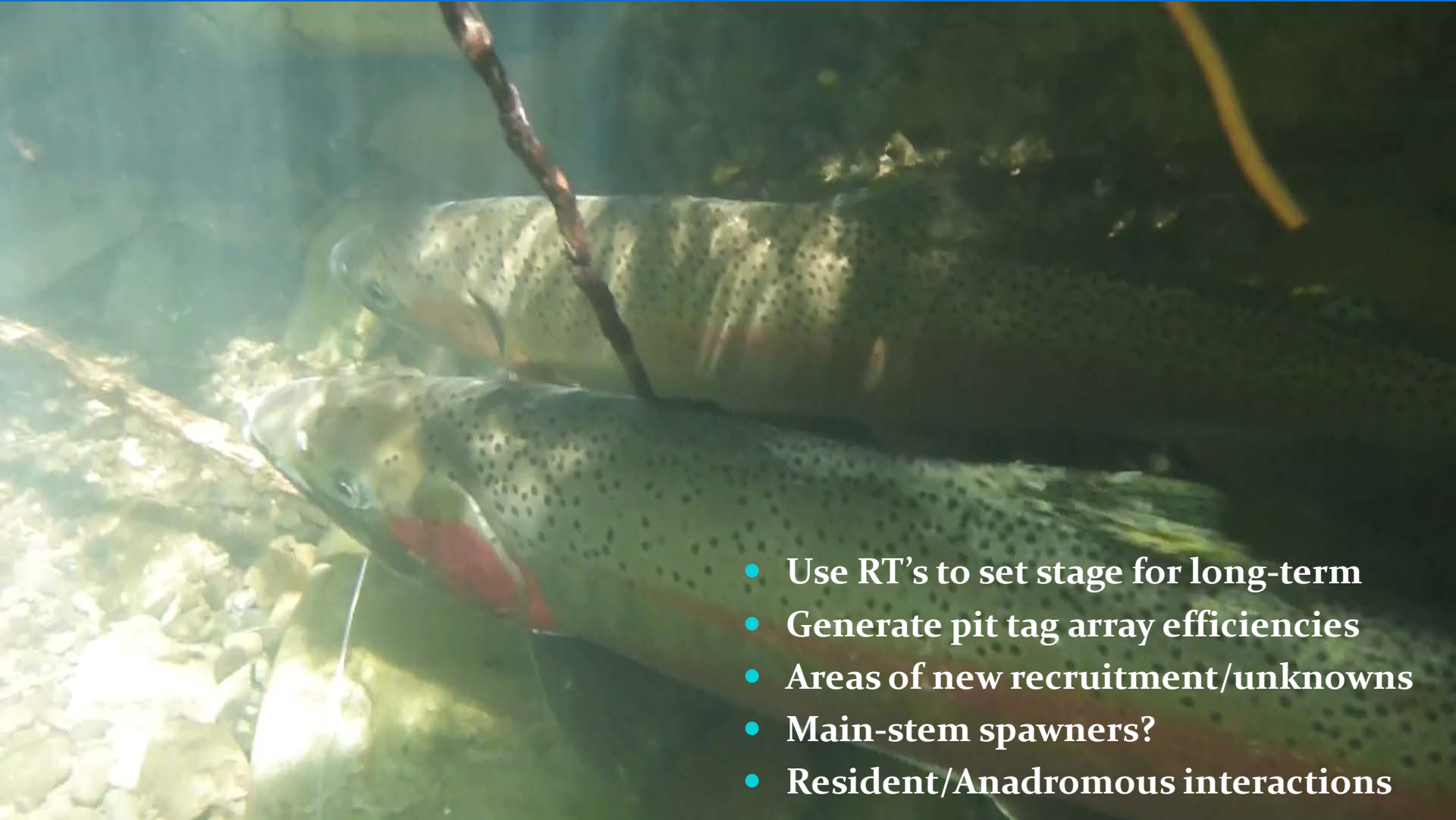
Detections in FY13





Pit tag interrogation sites

Why track radio tags above Roza?

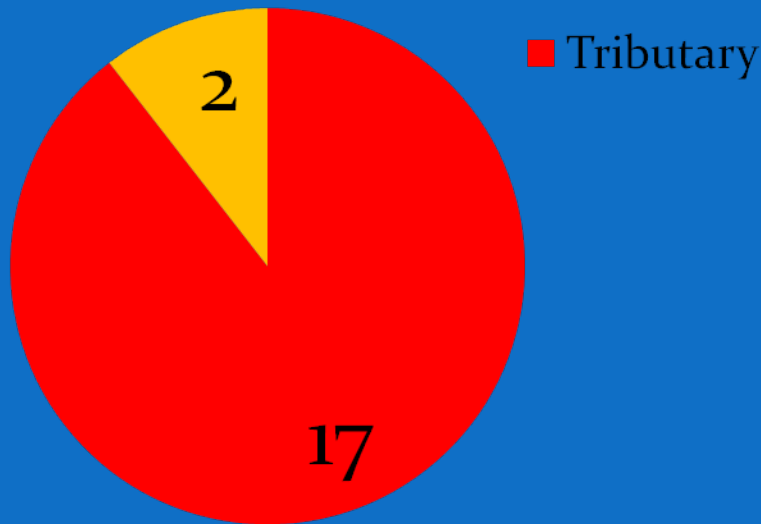


- Use RT's to set stage for long-term
- Generate pit tag array efficiencies
- Areas of new recruitment/unknowns
- Main-stem spawners?
- Resident/Anadromous interactions

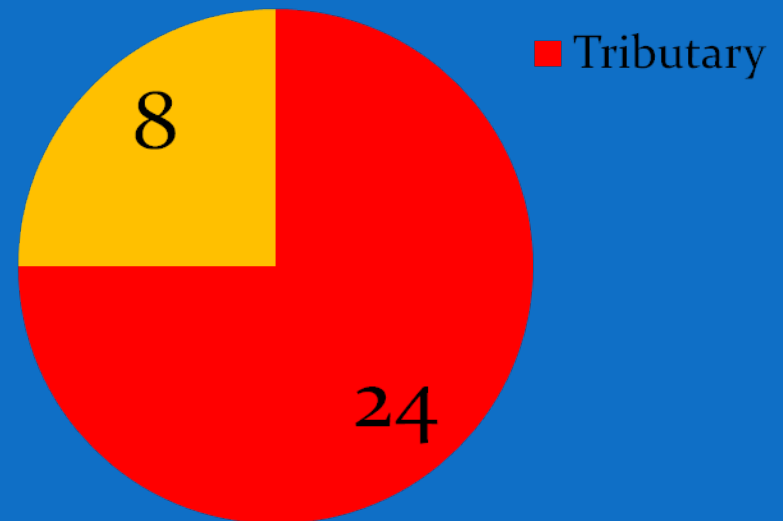
Spawning Distribution

radio tagged fish (trib/main-stem)

2012

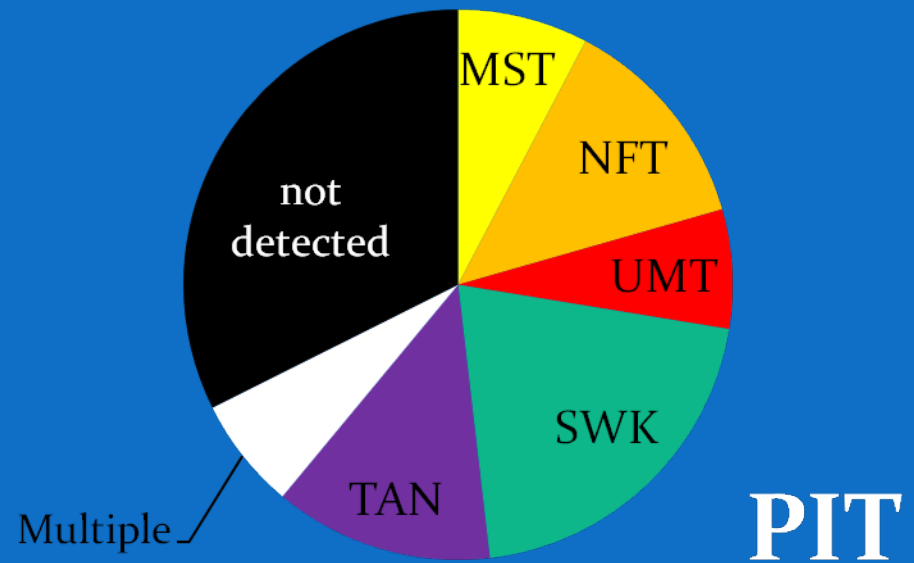
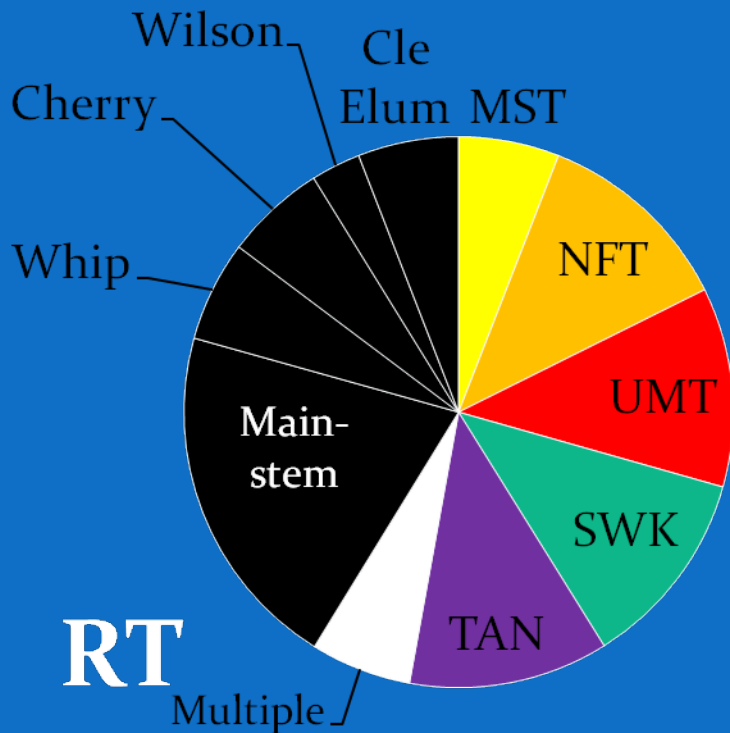


2013

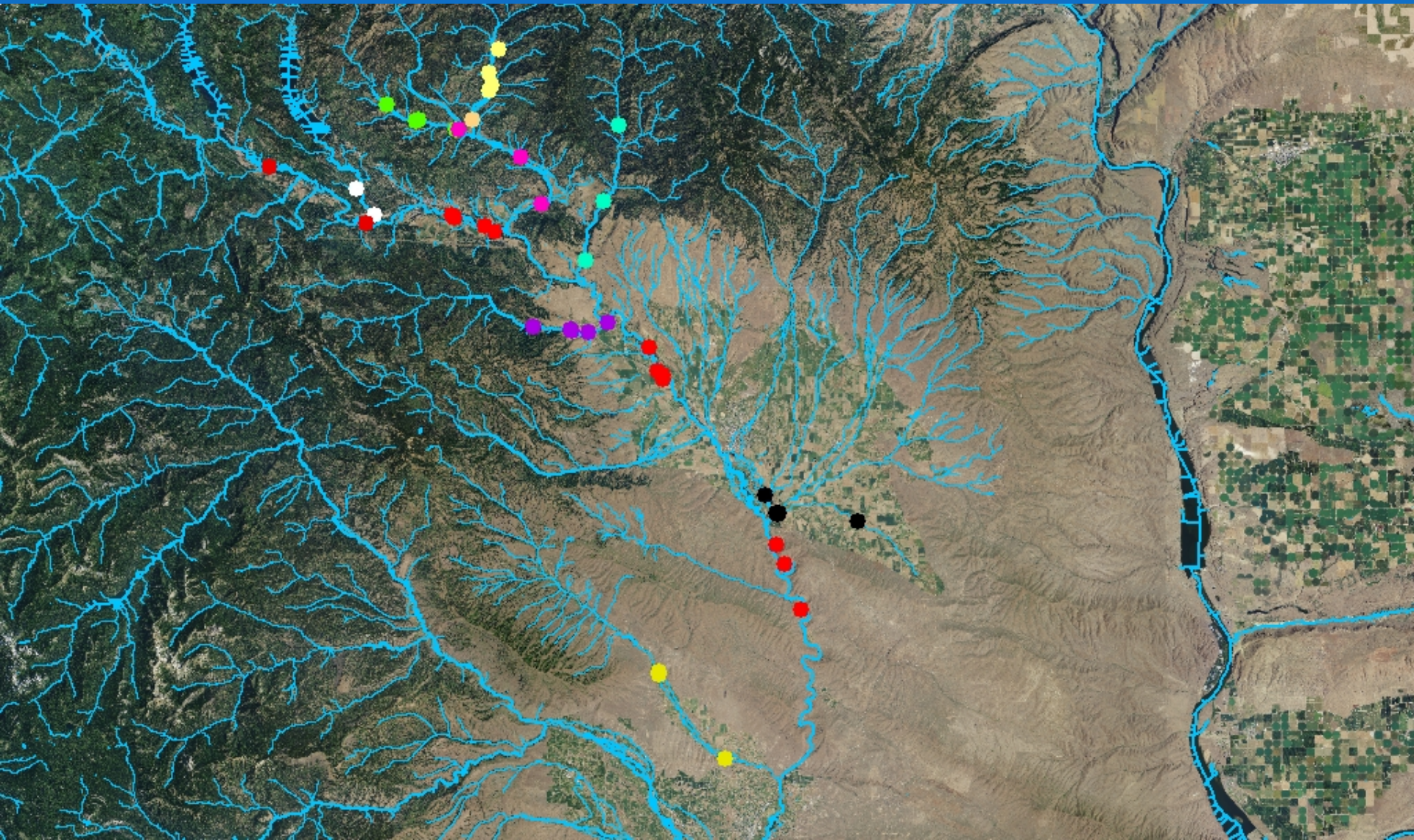


Spawning Distribution

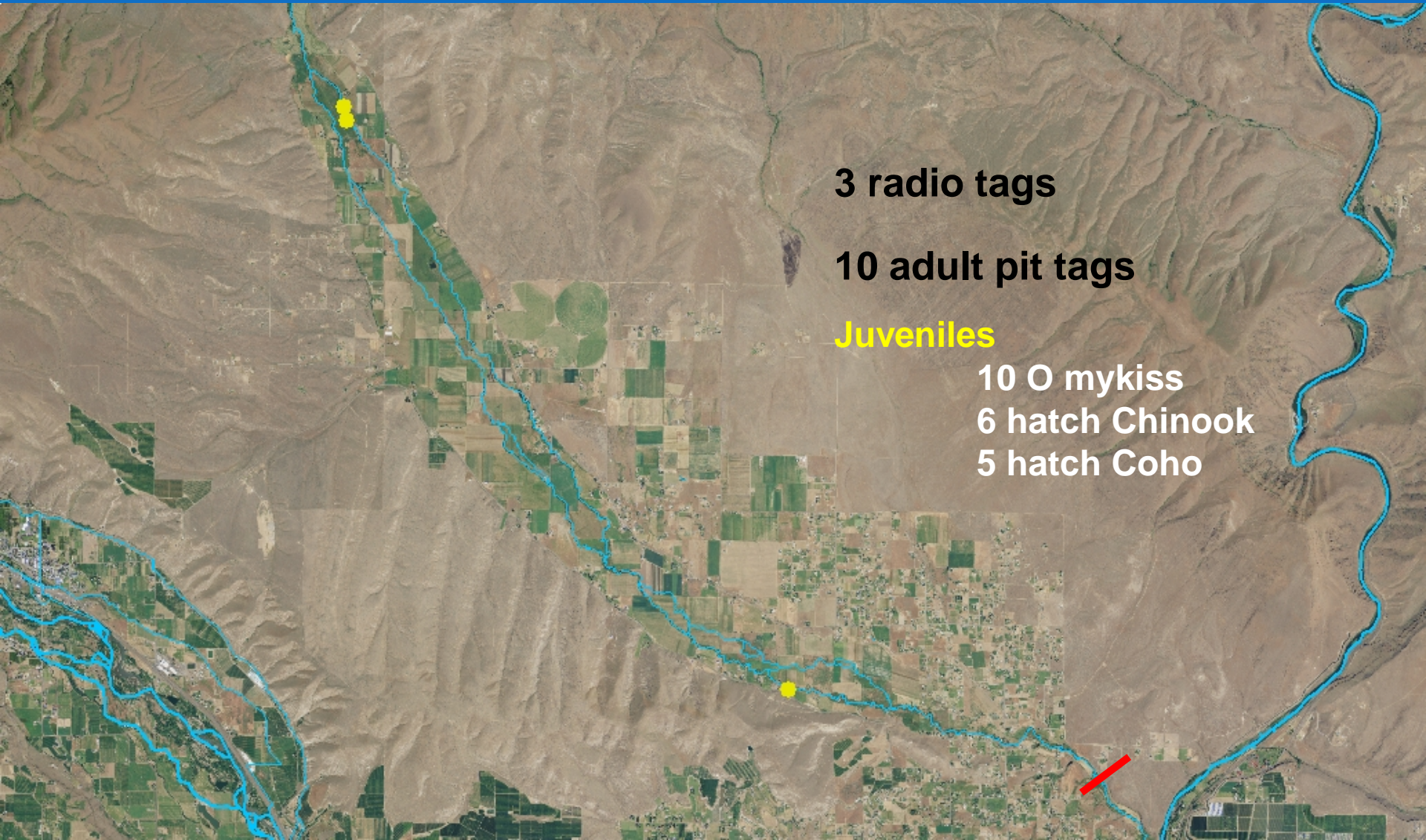
radio tags vs pit tags



Upper Yakima/Wenas spawning distribution (RT)



Wenas



3 radio tags

10 adult pit tags

Juveniles

10 O mykiss

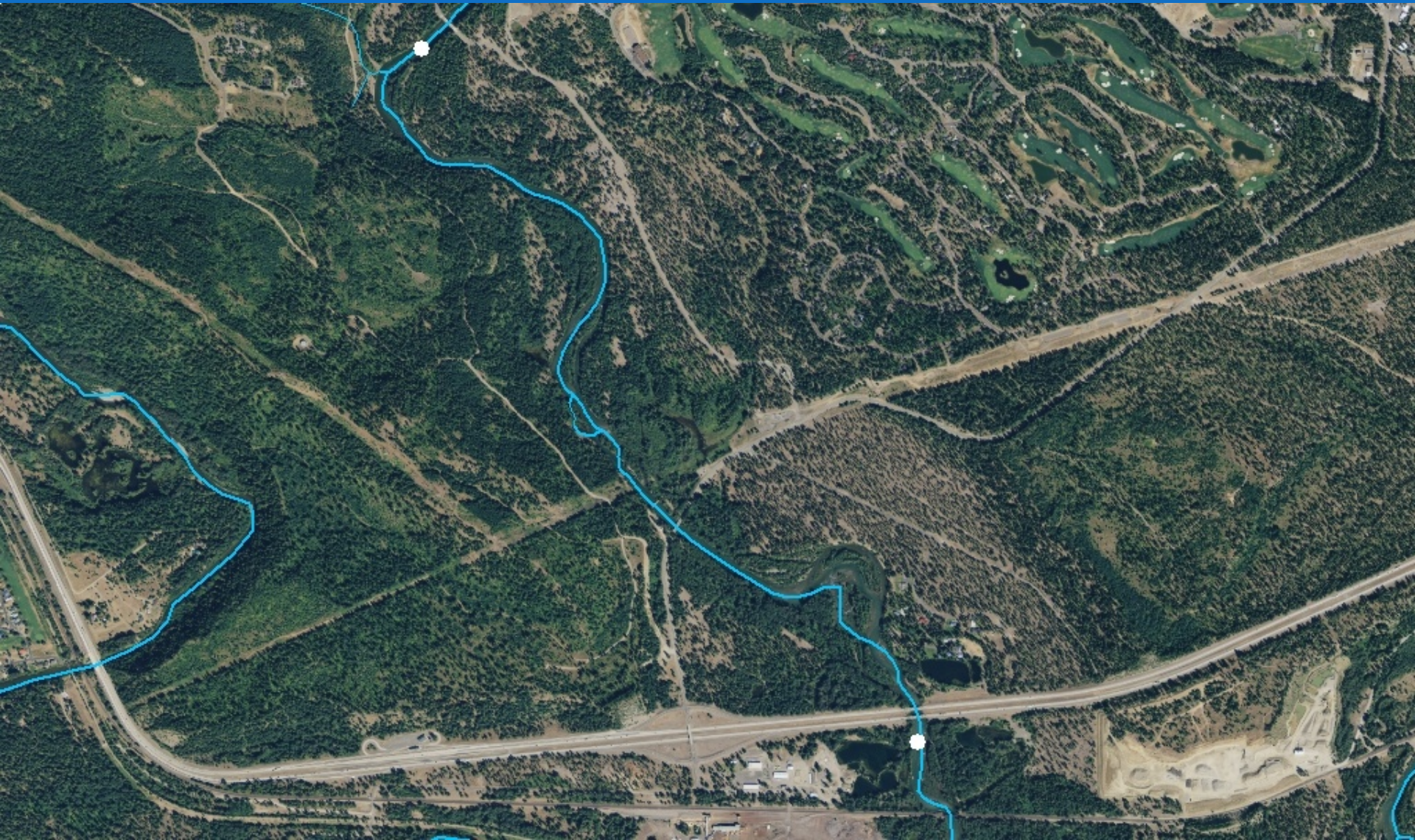
6 hatch Chinook

5 hatch Coho

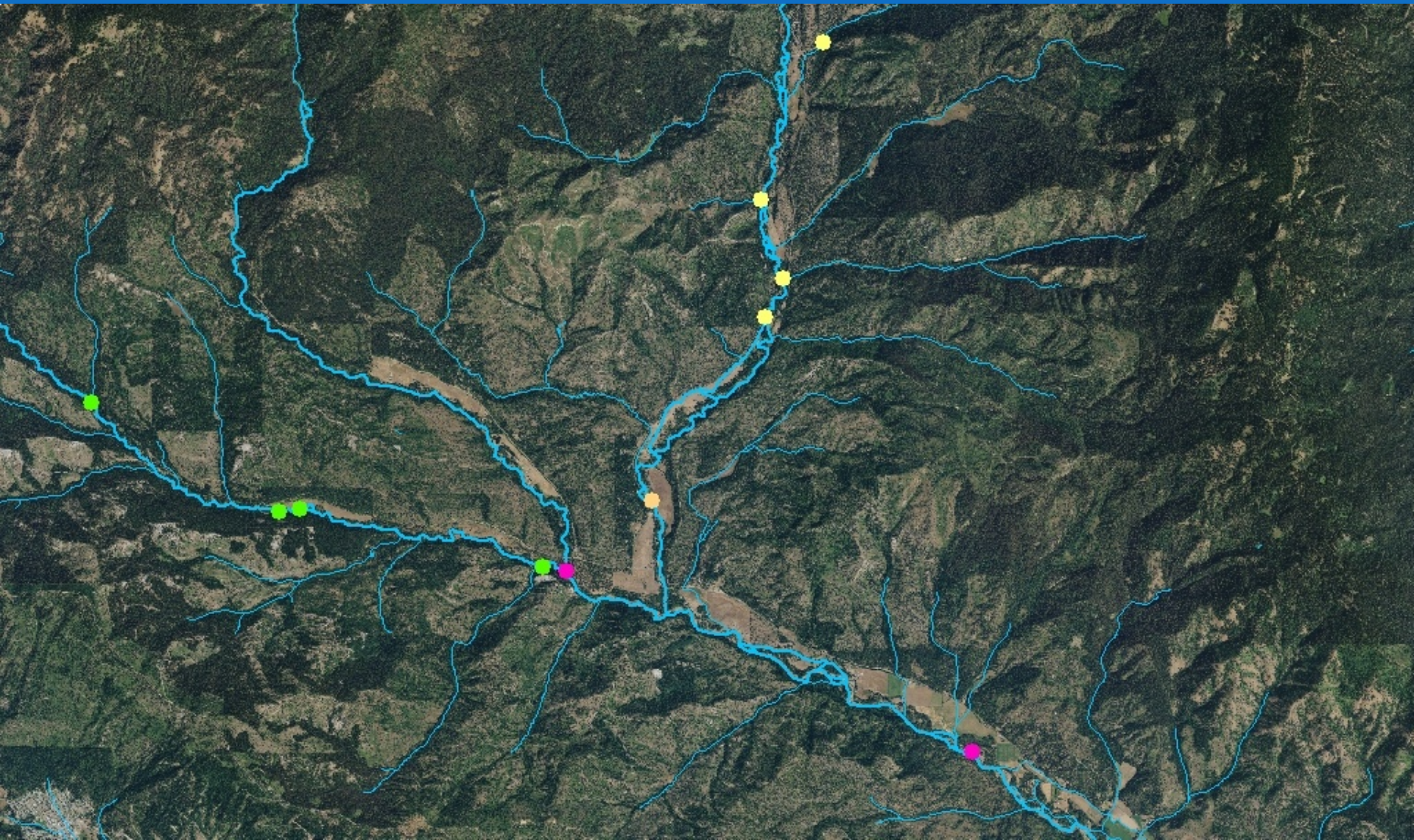
Wilson



Cle Elum



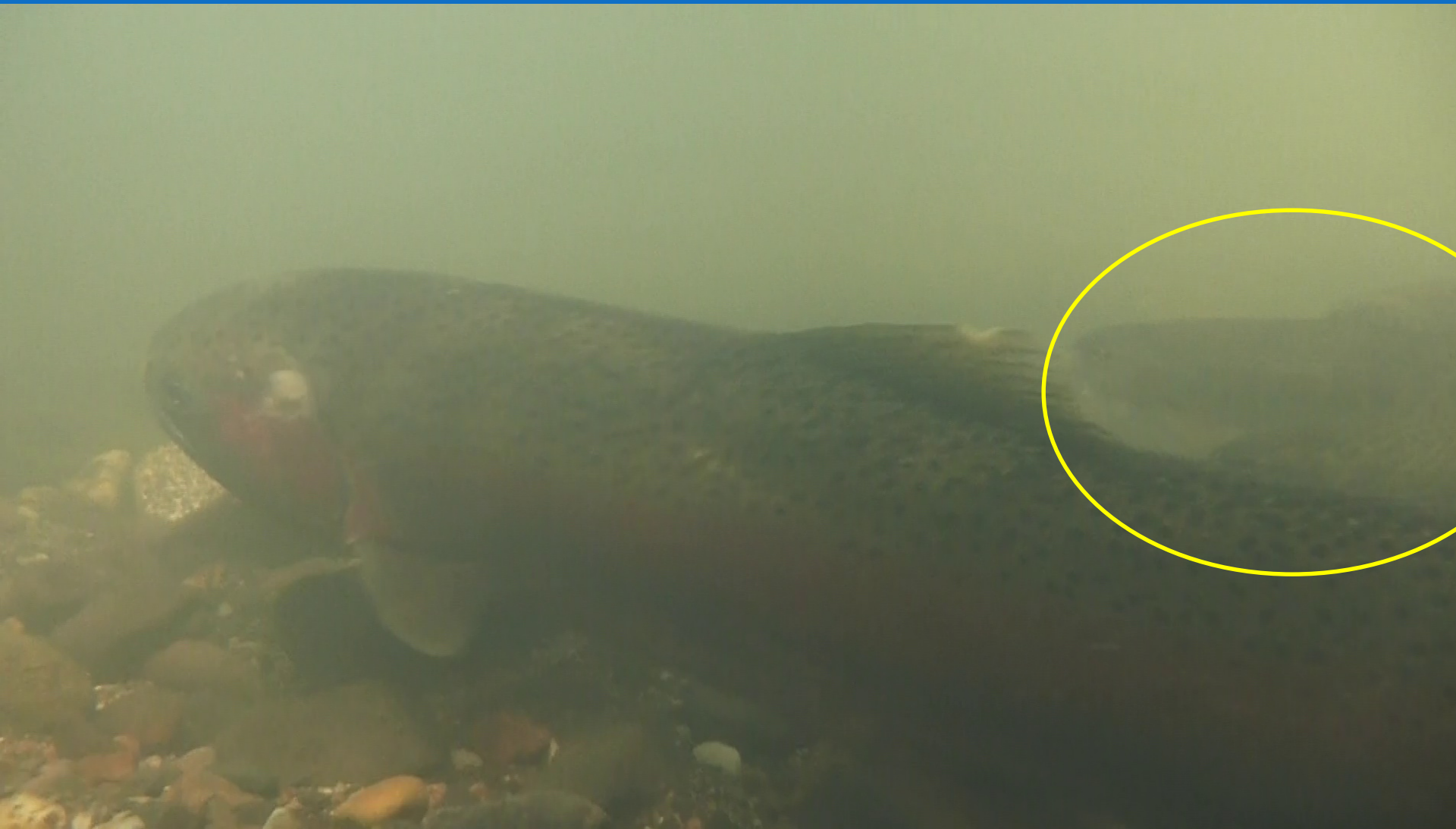
Upper Teanaway





Anadromous female/large resident male

Common Theme





Step-pool structures



Scott Nicolai's project

An underwater photograph showing a large, spotted fish, likely a trout, swimming near a dark, weathered log. The water is clear, revealing a rocky riverbed with various sized stones and pebbles. The fish is positioned in the lower half of the frame, facing right. The log runs diagonally from the top left towards the center. The overall scene is dimly lit, typical of an underwater environment.

Jack Creek fish

Photo by Cade Lillquist

Passage barriers



Acknowledgements

