

Project C.A.T.



Cougars And Teaching

Project C.A.T.

Objectives:

Spatial & Habitat Use of Cougars

Predation & Food Habits

Demography & Kitten Survival

Relation to human development

Education & Community Outreach



Project C.A.T.



Captured and Collared 2001-2008

46 cougars marked

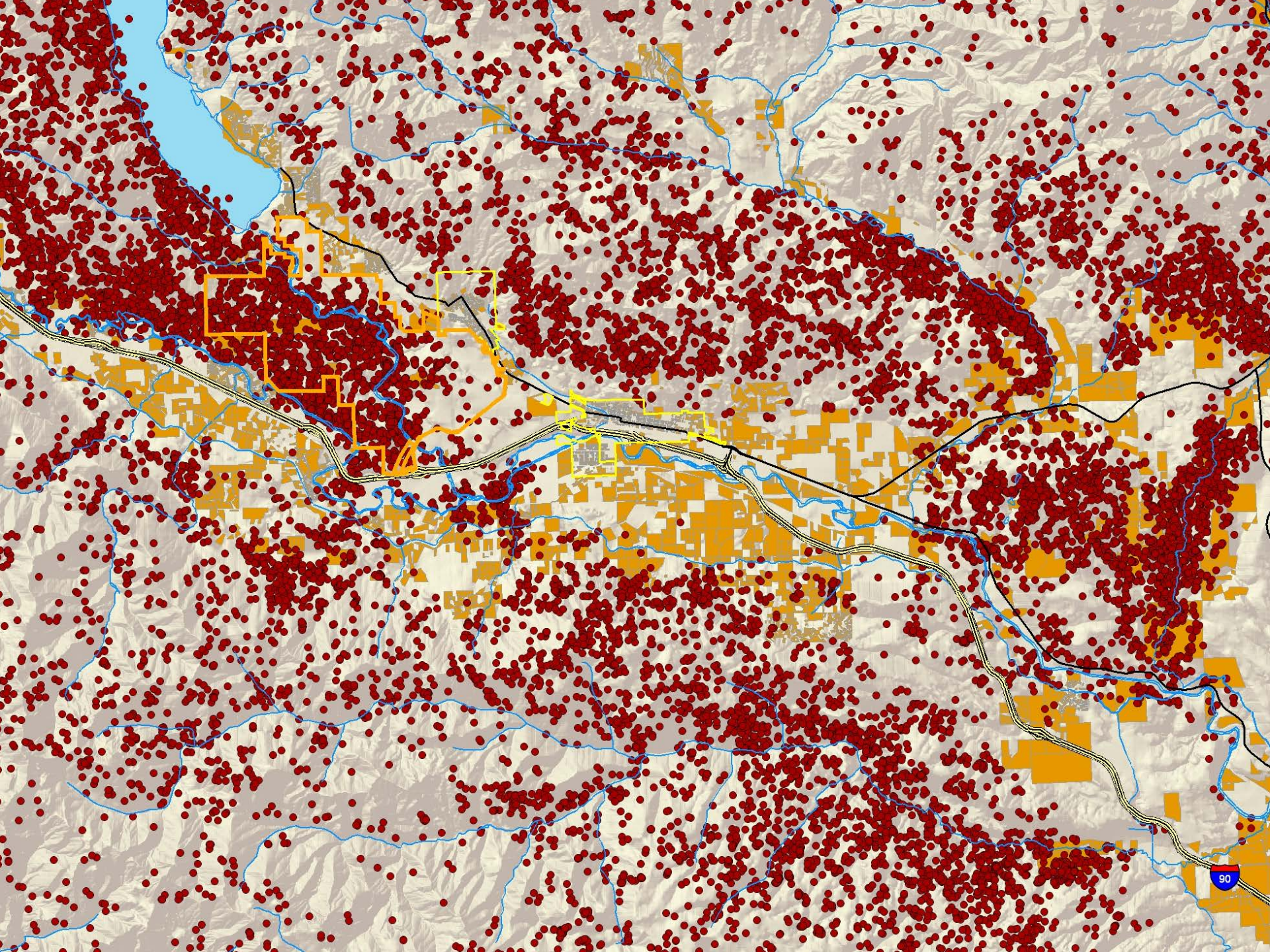
10 Females (>2 yrs) with GPS collars

16 Males (>2 yrs) with GPS collars



GPS location acquisitions

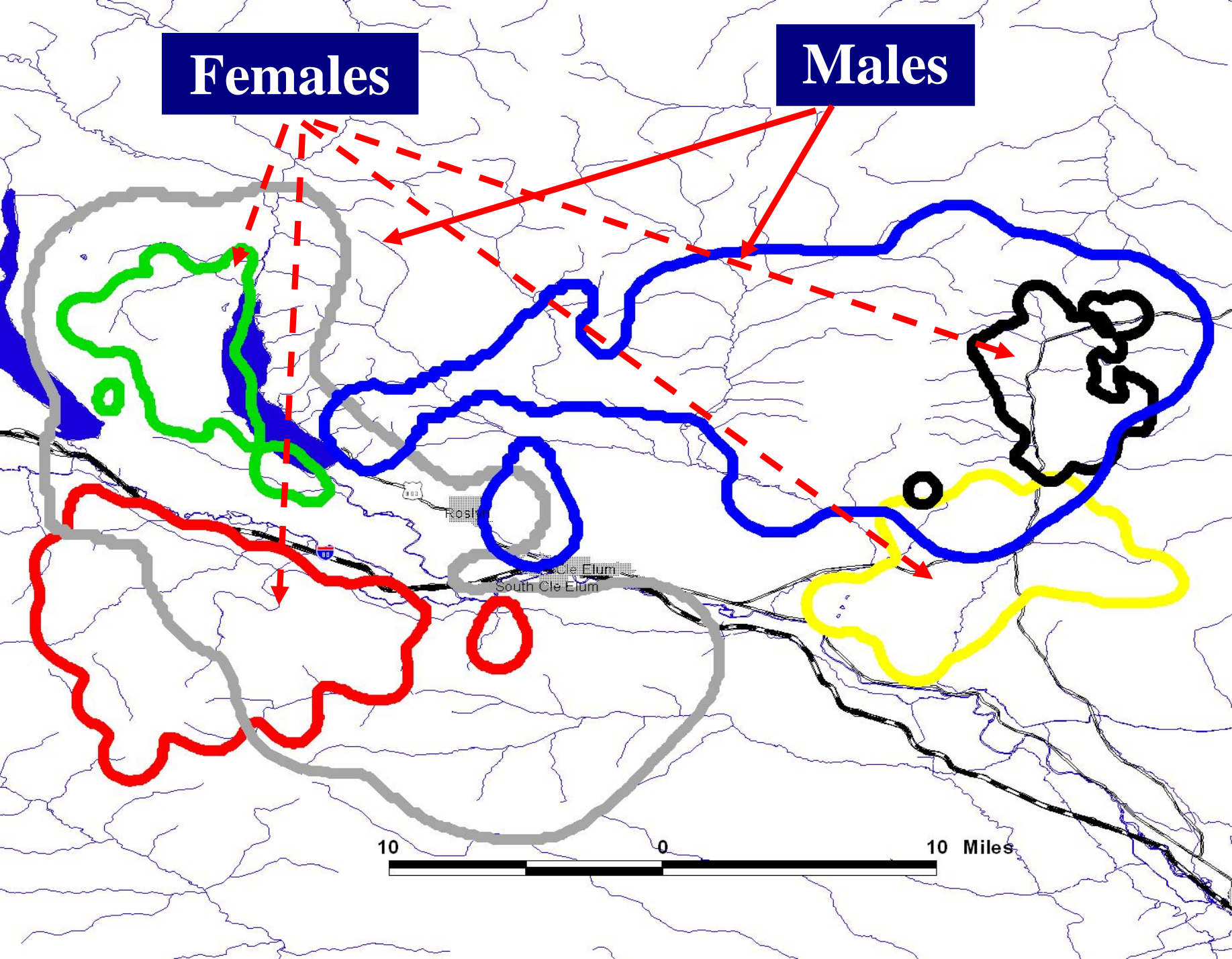
~ 30,000 GPS Locations





Females

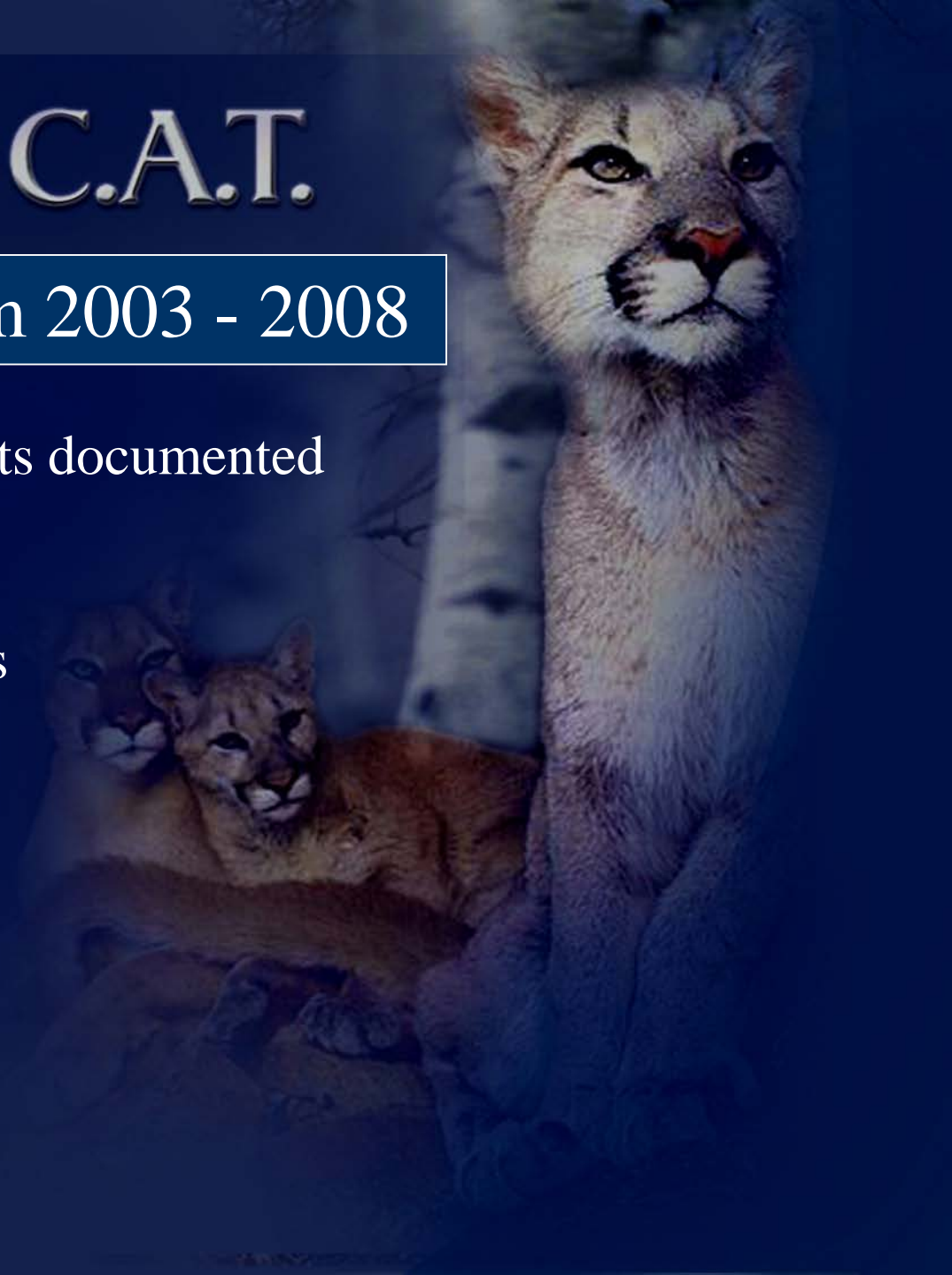
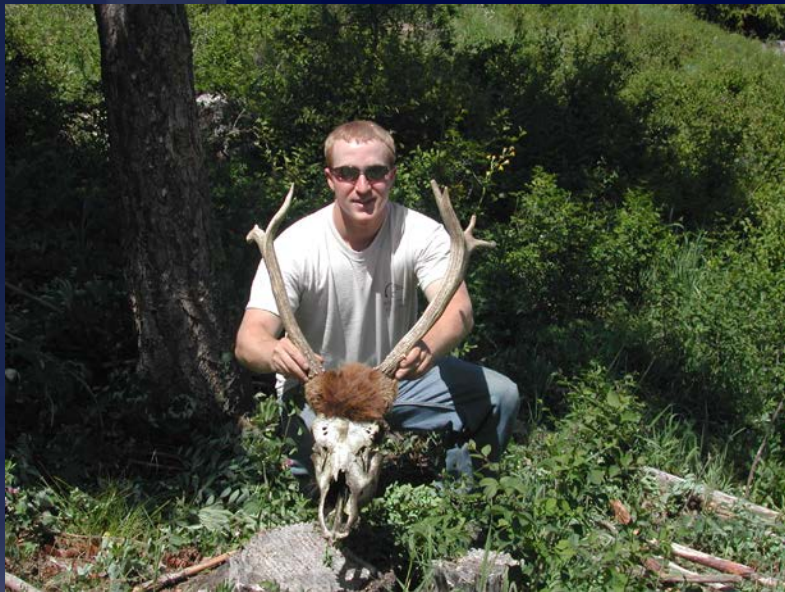
Males



Project C.A.T.

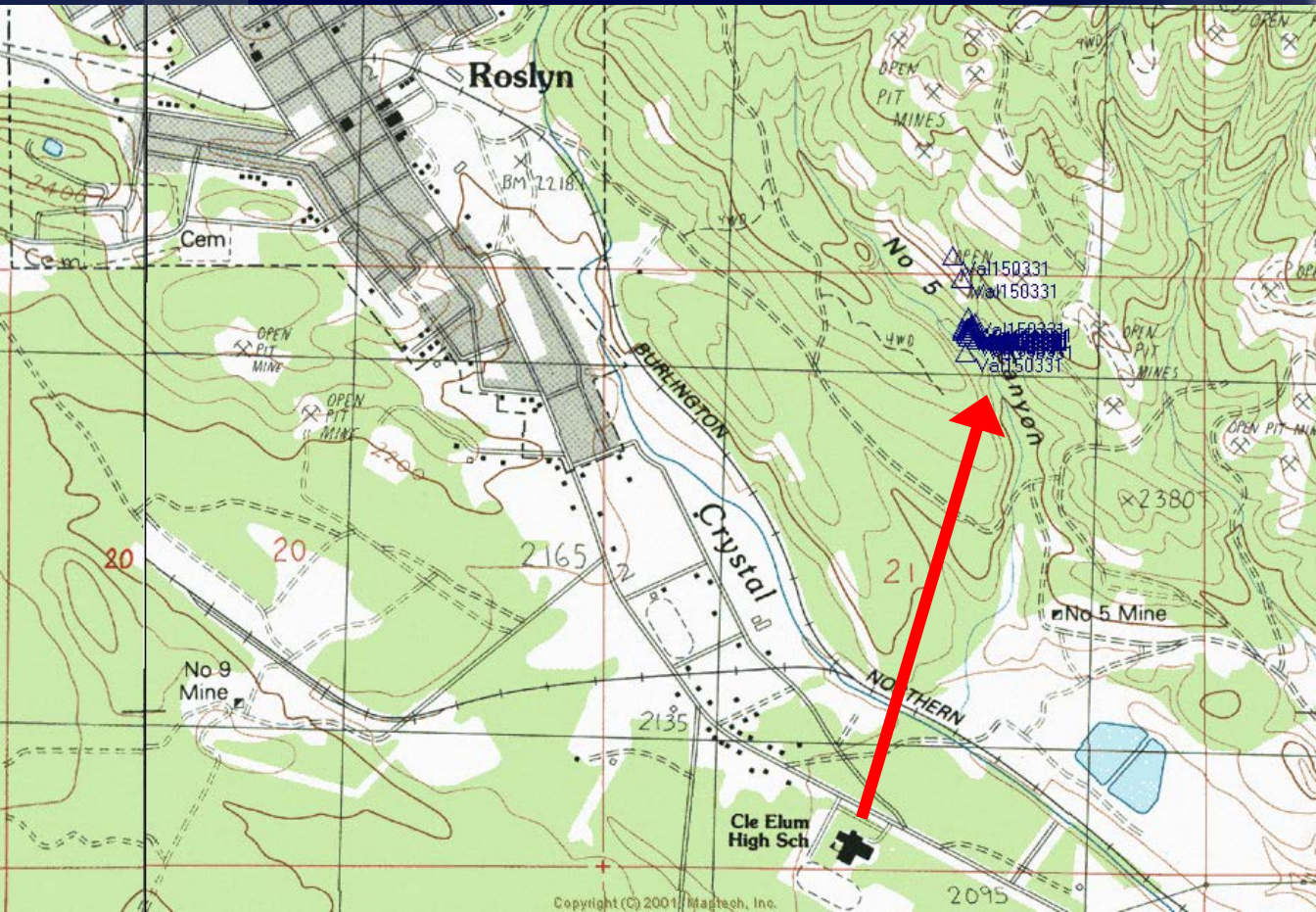
Predation events from 2003 - 2008

- ~ 255 Predation events documented
- ~ 19 Cougars*
- ~ 9 females, 10 males



Project C.A.T.

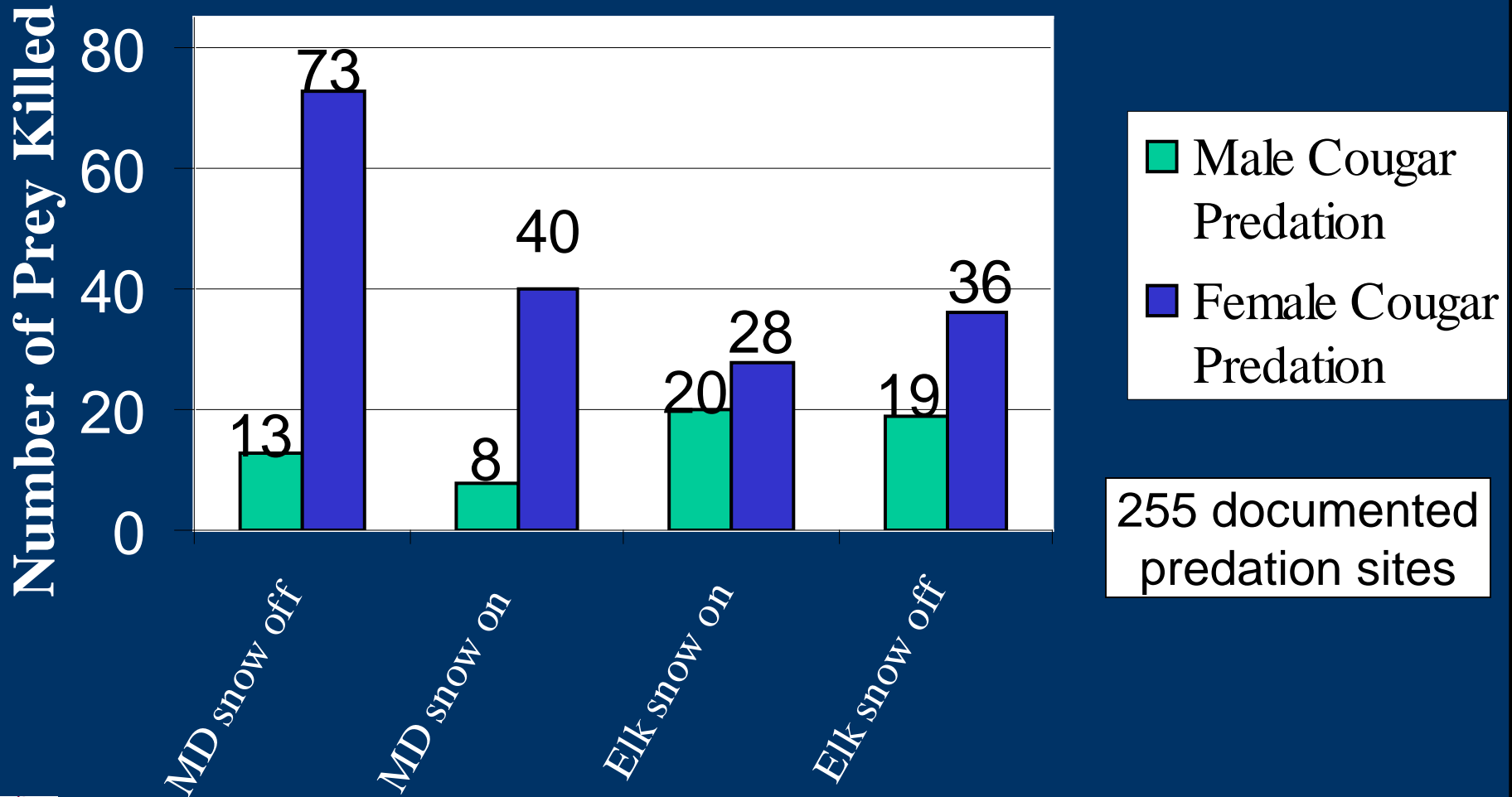
330 cluster GPS sites inspected

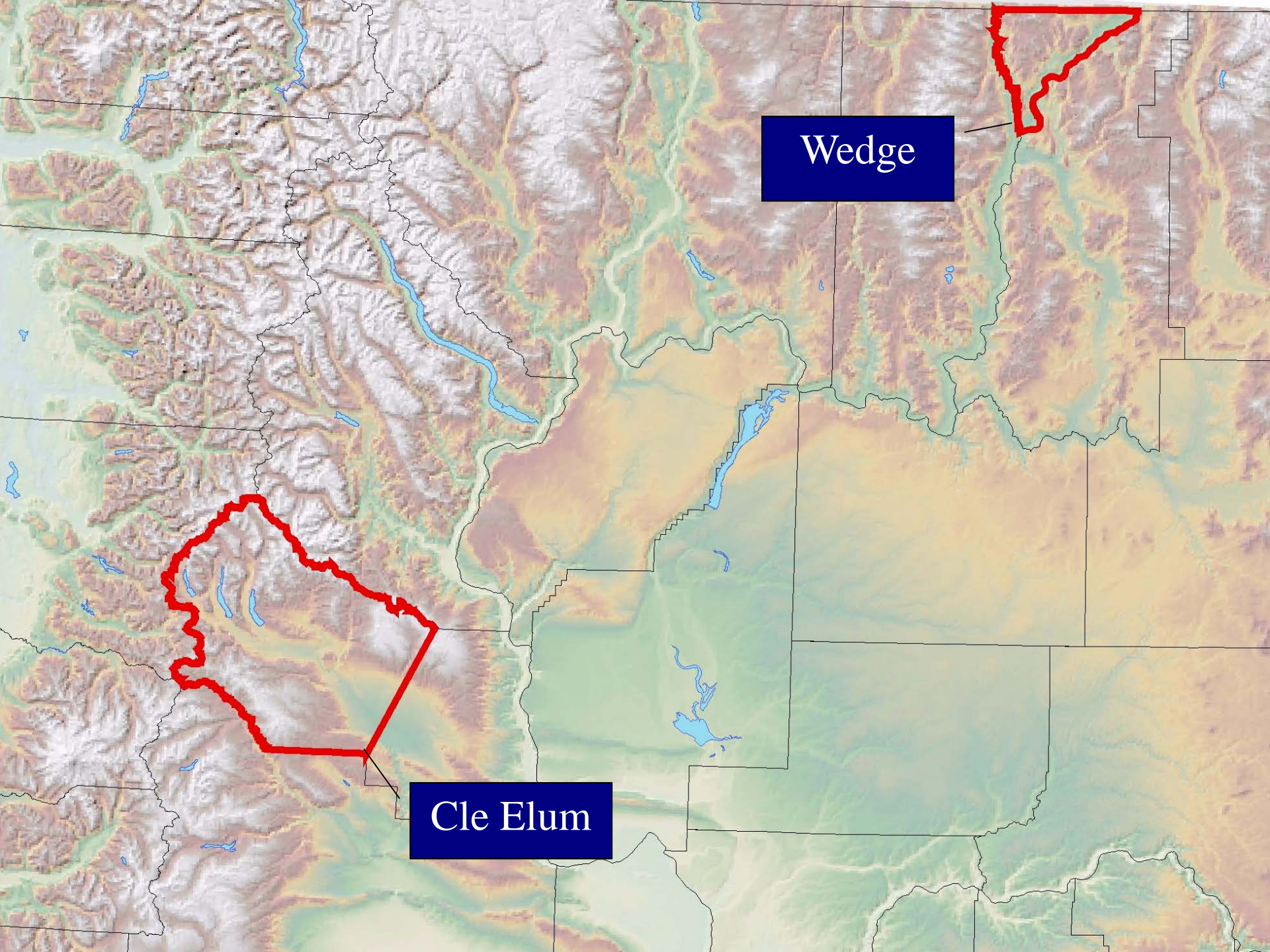






Seasonal Cougar Prey Composition





Wedge

Cle Elum

Project C.A.T.



Comparing County Statistics

	Kittitas Co.	Stevens Co.
Population	16.7/km ²	17.4/km ²
Unincorporated	7.2/km ²	13.4/km ²
Land (sq mi)	2,297	2,478
Harvest / 100 km ²	0.23	0.45

Project C.A.T.

Cougar Incident Reports 2005-2008



	Kittitas Co.	Stevens Co.
Total Reports	23	127
Total Depredations	2	16
Unverified	14 (61%)	95 (75%)
Verified	9 (39%)	32 (25%)

Demographics & Kitten Survival



Project C.A.T.



Project C.A.T.

Demographics & Kitten Survival

Most survival rates in CE (71%) significantly higher than in KF (57%).

Modeled Stochastic Growth Rates suggest:

CE is increasing (1.10), KF is strongly declining (0.73)

Observed Growth Rates suggests:

CE is not increasing (1.00), KF is not declining as strongly (0.92)

The difference between growth rates suggests:

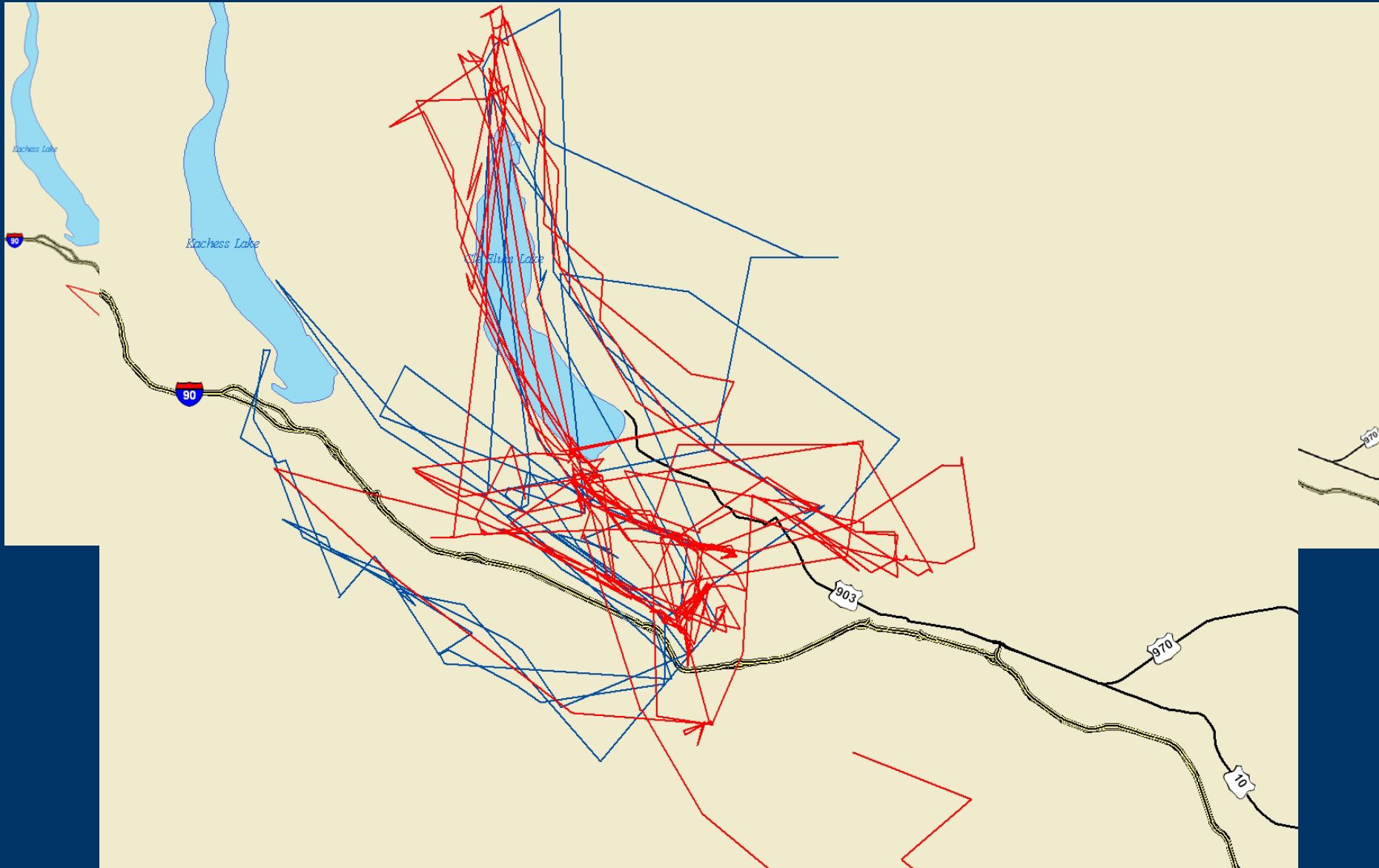
CE Emigration Rate (0.10), KF Immigration Rate (0.19)

Age Structure is older and more stable in CE (41 months) vs. KF (27 months)

(Hilary Cooley, unpublished data)

Male 154/154
Feb – Apr 2004

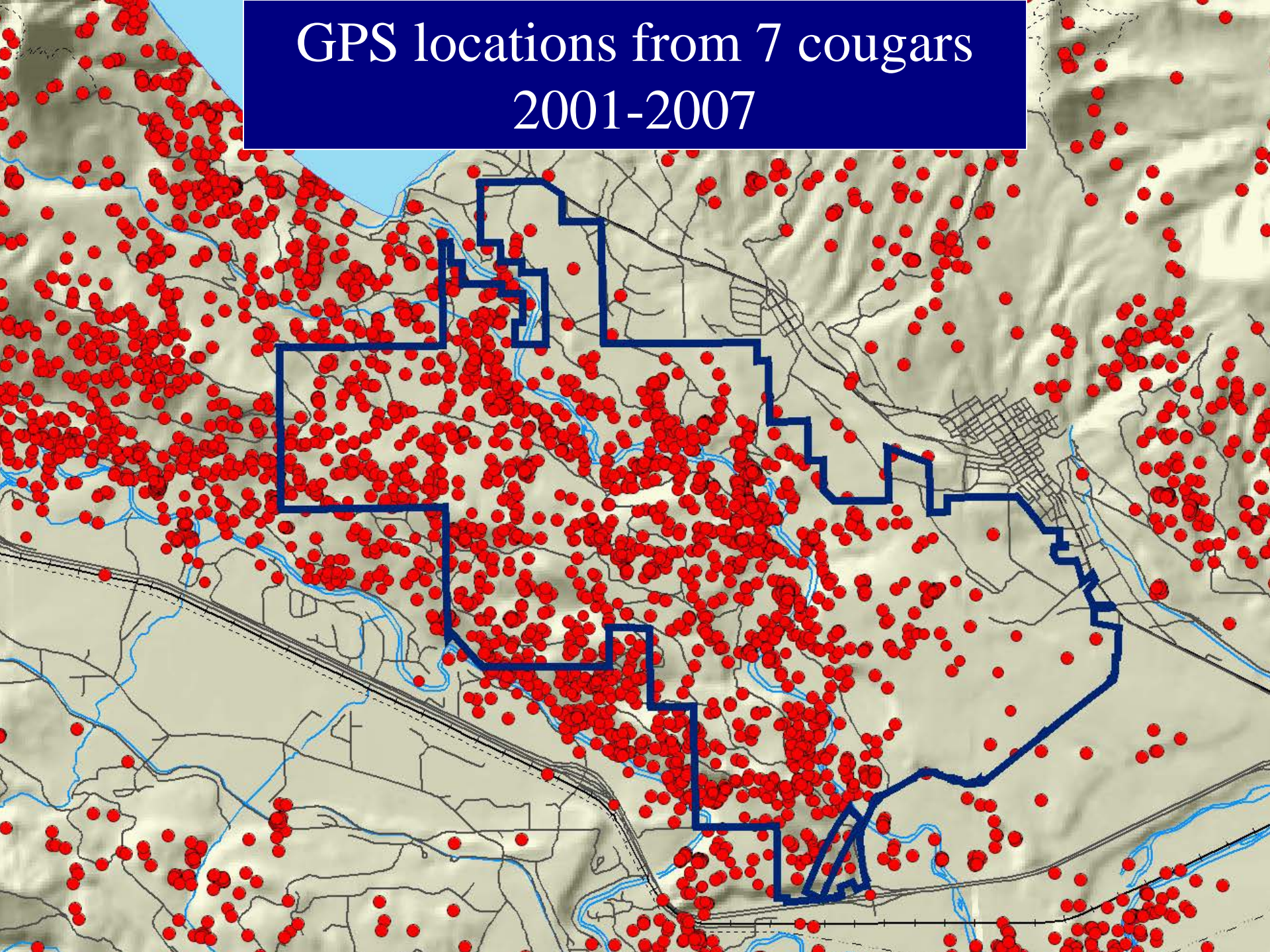
Male 140/140
Feb – Apr 2007



Relation to Human Development

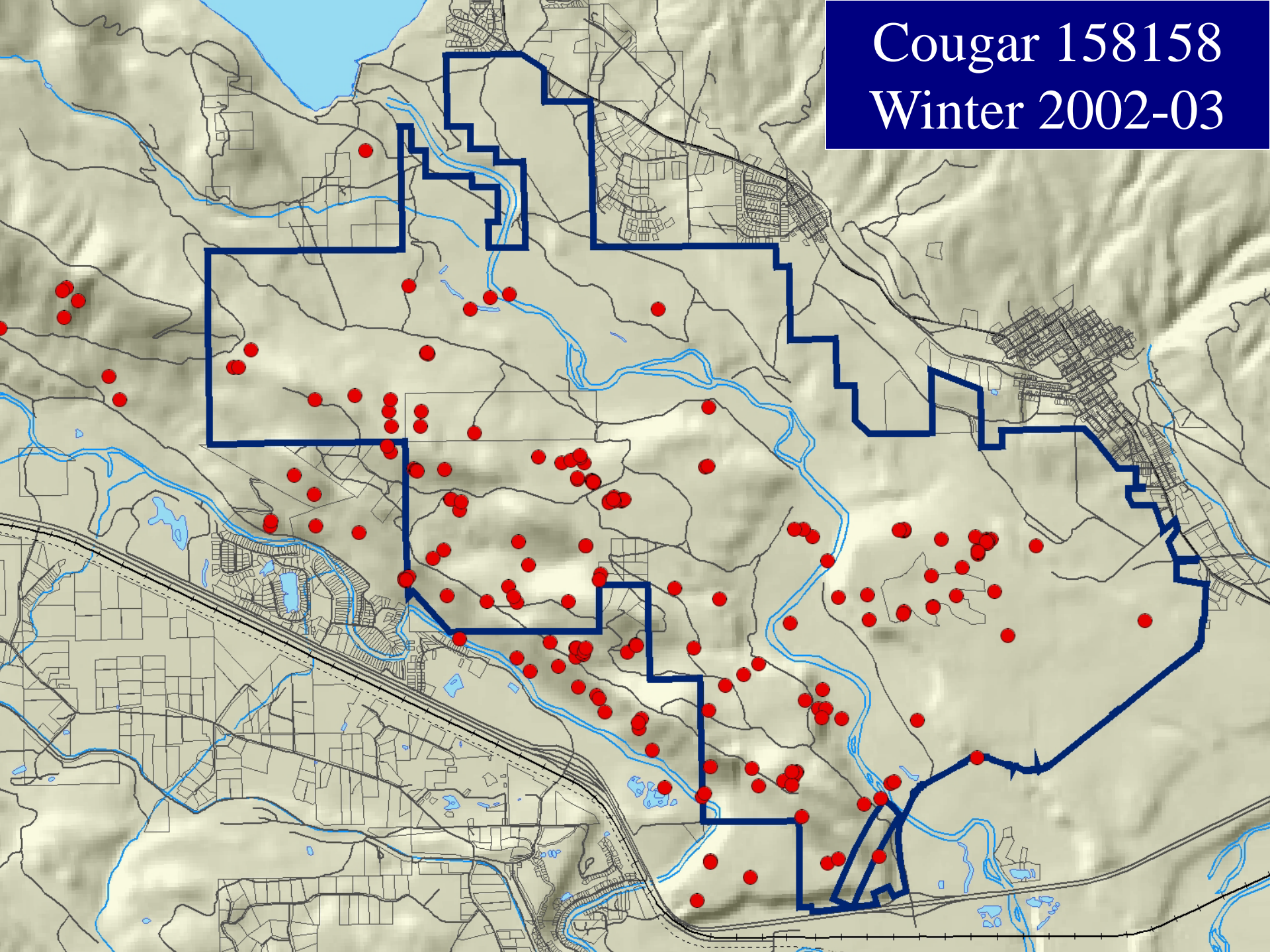


GPS locations from 7 cougars 2001-2007



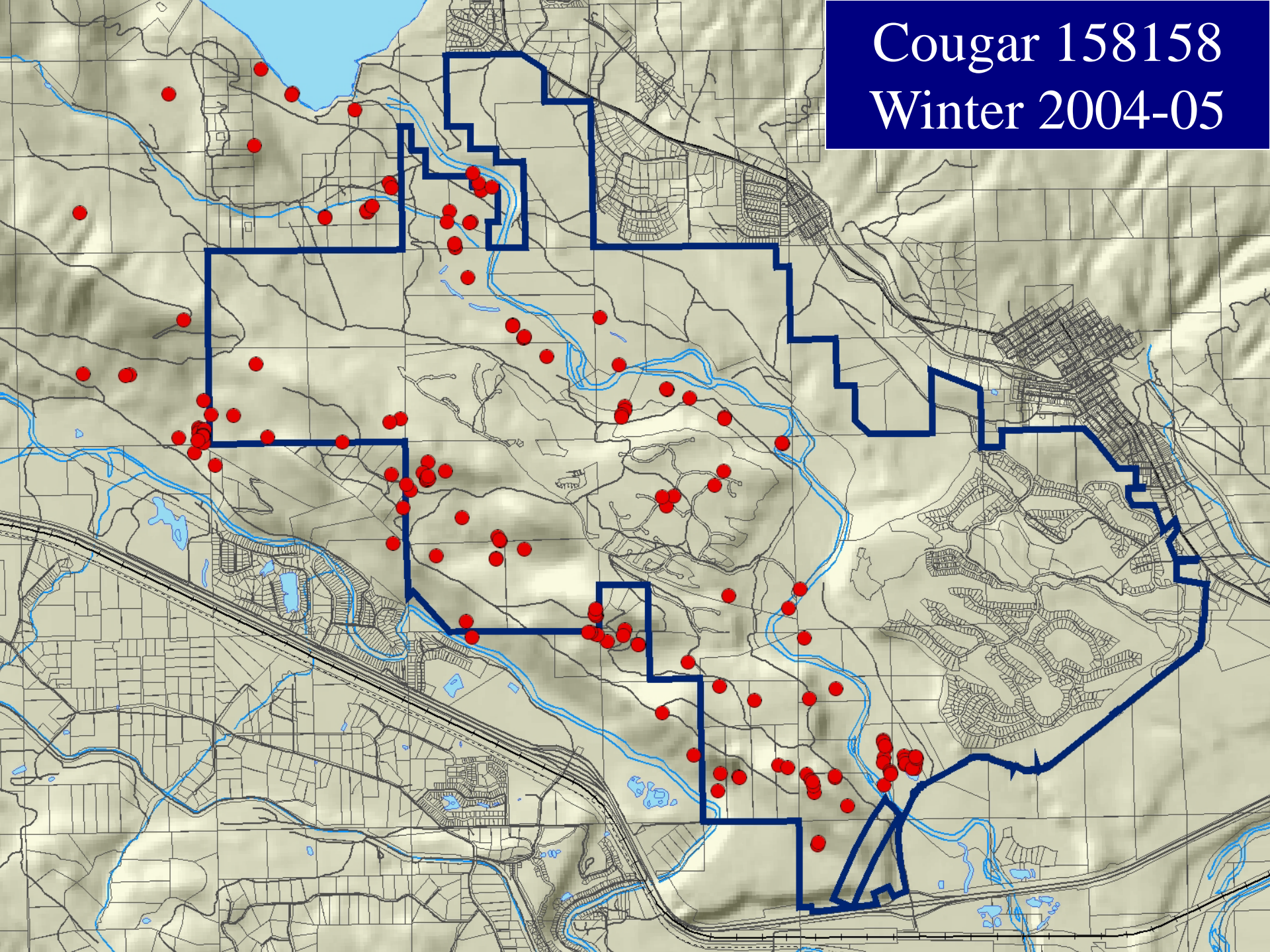
Cougar 158158

Winter 2002-03



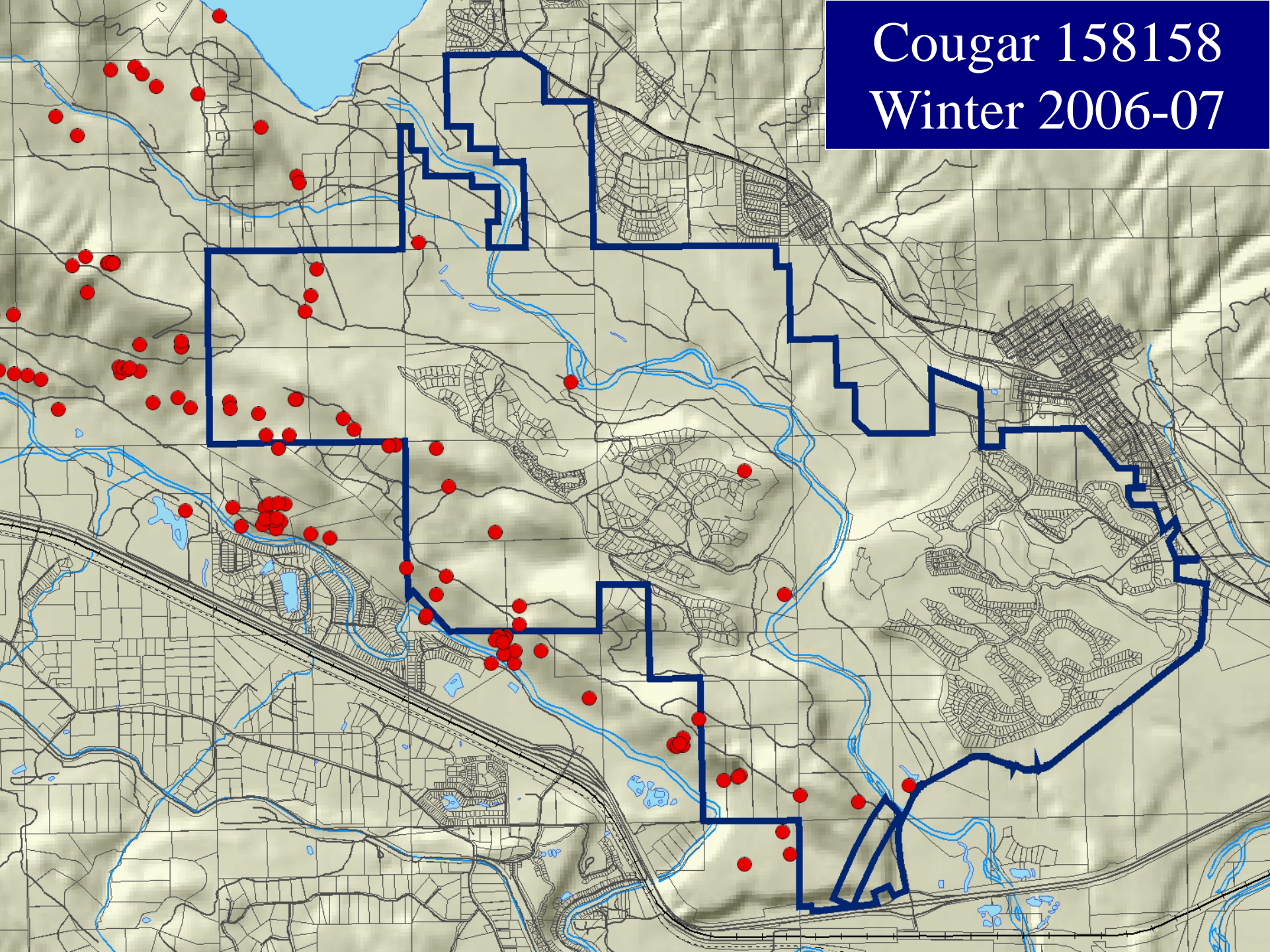
Cougar 158158

Winter 2004-05



Cougar 158158

Winter 2006-07



Thank you for your support!

Washington Department of Fish and
Wildlife

Washington State Department of
Transportation

Pacific Education Institute

The Cougar Fund

Laura Foreman

Canopy

Dallas Likens

Windermere

Plum Creek Timber Co.

Puget Sound Energy

Discurn Foundation

Suncadia

Cascade Field & Stream

Inland Telephone

Safari Club

Olympic Taxidermy

UKC Rotary

Central Washington
University

University of Washington

Nature Mapping

Washington State University

Boeing