



TEANAWAY COMMUNITY FOREST

June 15, 2016

Yakima Basin Science & Management Conference

Mike Livingston, WDFW

Eric Winford, DNR





BUILDING A FUTURE FOR WATER, WILDLIFE AND WORKING LANDS

YAKIMA RIVER BASIN INTEGRATED WATER RESOURCE MANAGEMENT PLAN

Reservoir Fish Passage

Provide fish passage at:

1. Clear Lake
2. Cle Elum
3. Bumping
4. Tieton (Rimrock)
5. Keechelus
6. Kachess

Enhanced Water Conservation

1. Implement an agricultural water conservation program designed to conserve up to 170,000 acre-feet of water in good water years.
2. Create a fund to promote water use efficiency basin-wide using voluntary, incentive-based programs. Focus on outdoor use as top priority.

Habitat Protection & Enhancement

1. Protect ~70,000 acres of land by acquiring high elevation portions of the watershed and forest and shrub-steppe habitat.
2. Evaluate riparian wilderness area and wild and scenic river designations to protect streams and habitat.
3. Create a habitat enhancement program to address reach-level floodplain restoration priorities and restore access to key tributaries.

Market Reallocation

Employ a water market and/or a water bank to improve water supply in the Yakima River basin. Market reallocation would be conducted in two phases:

The near-term phase would continue existing water marketing and banking programs in the basin, but take additional steps to reduce barriers to water transfers.

The long-term program would focus on facilitating water transfers between irrigation districts. This would allow an irrigation district to follow land within the district and lease water rights for that land outside the district.

Structural & Operational Changes

1. Raise the Cle Elum Pool by three feet to add 14,600 ac-ft in storage capacity.
2. Modify Kittitas Reclamation District canals to provide efficiency savings.
3. Construct a pipeline from Lake Keechelus to Lake Kachess to reduce flows and improve habitat conditions during high flow releases below Keechelus and to provide more water storage in Lake Kachess for downstream needs.
4. Decrease power generation at Roza Dam and Chandler power plant to support outmigration of juvenile fish.
5. Make efficiency improvements to the Wapatox Canal.

Surface Water Storage

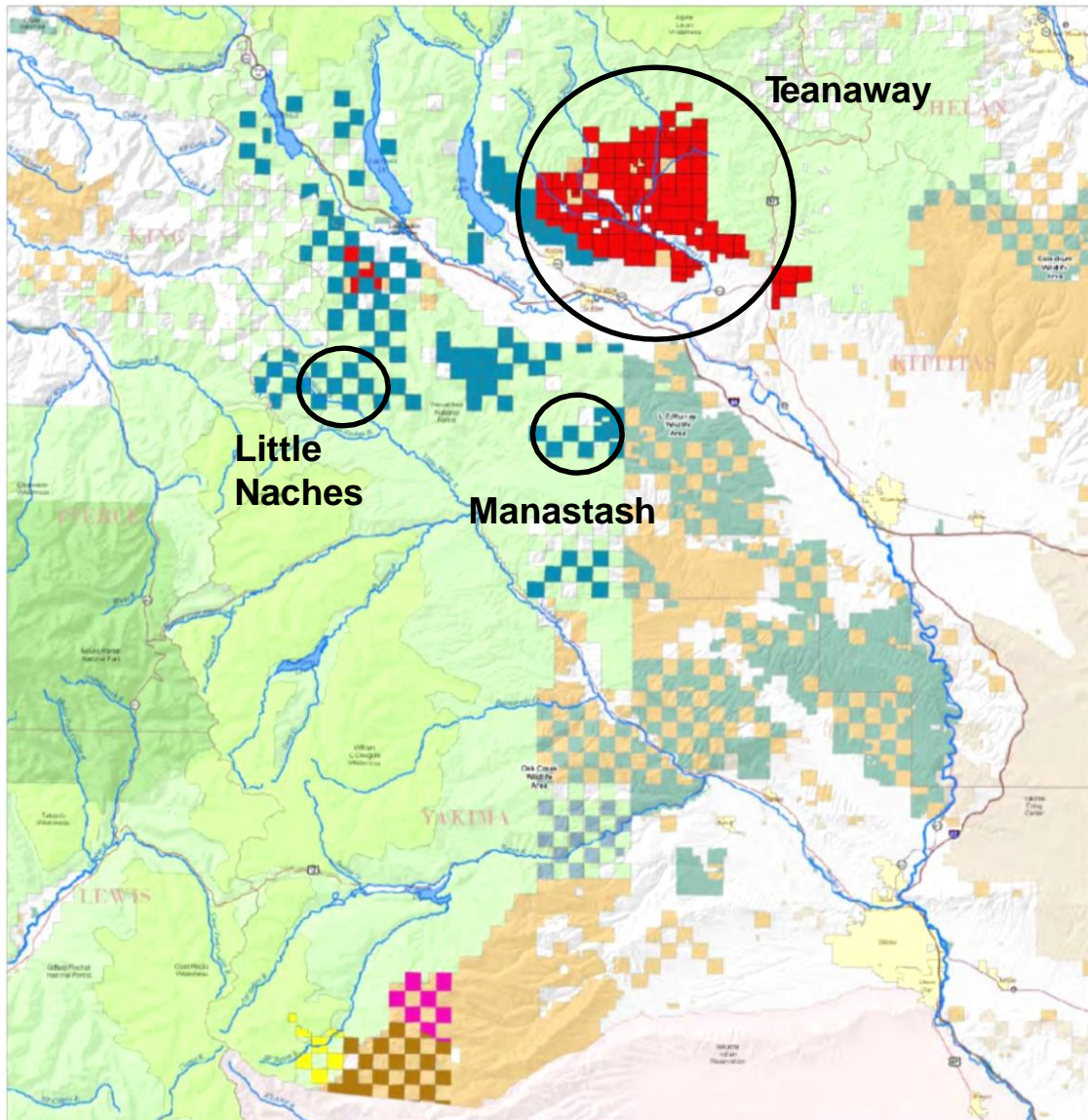
1. Build a 162,500 ac-ft off-channel surface storage facility at Wymer on Lmuma Creek.
2. Access an additional 200,000 ac-ft of water by tapping into inactive storage at Lake Kachess.
3. Construct a new dam at Bumping Reservoir to increase capacity to 190,000 ac-ft.
4. Begin appraisal of potential projects to transfer water from the Columbia River to the Yakima Basin.

Groundwater Storage

1. Construct pilot projects to evaluate recharging shallow aquifers via groundwater infiltration. Full scale implementation may follow.
2. Build an aquifer storage and recovery facility allowing Yakima City to withdraw water from the Naches River during high flow periods and store it underground for use during low flow periods.



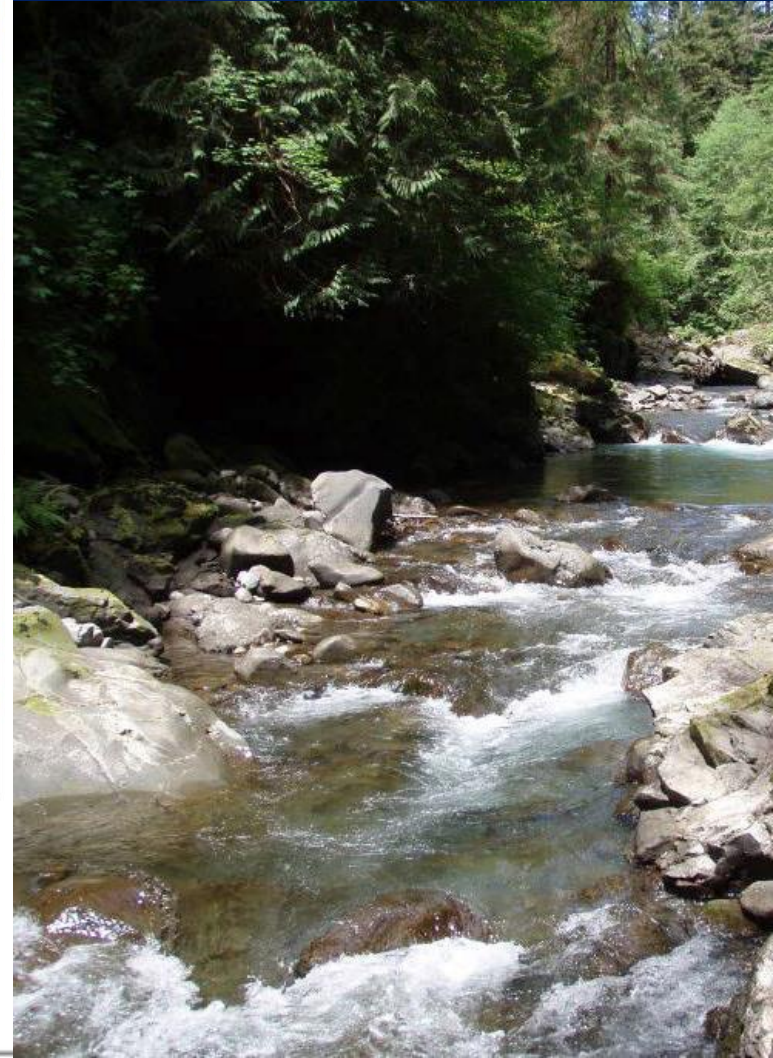
YBIP Strategic Land Acquisitions to Promote Watershed Health



- | | | |
|--|---|---|
| Major Land Owners | Land Management | Other Federal Lands |
| ■ American Forest Resources: 51,437 acres | ■ WA Dept. of Fish and Wildlife | ■ National Park Service |
| ■ Plum Creek, Timber: 63,619 acres | ■ WA Dept. of Natural Resources | ■ US Forest Service |
| ■ Cowiche 1 | ■ Tribal | ■ USFS Wilder Areas |
| ■ Cowiche 2 | | |
| ■ Cowiche 3 | | |



Figure 1. Options for Forest Land Acquisition.



2013 Legislative direction

- **DNR owns & manages community forest in consultation w/ WDFW**
- **Consistent w/ Yakima Basin IP principles**





2013 Legislative direction

Protect & enhance water supply & protect watershed

2013 Legislative direction

Maintain working lands for forestry & livestock grazing while protecting watershed functions & habitat



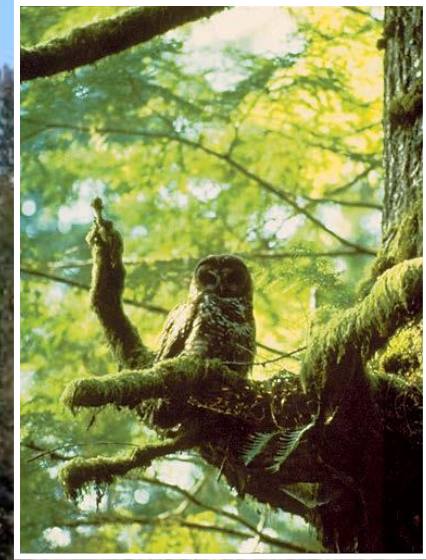
2013 Legislative direction

Provide recreational opportunities consistent with watershed protection



2013 Legislative direction

Conserve and restore habitat for fish and wildlife



community



support

Teanaway Community Forest

□ Advisory Committee

- Trout Unlimited
- Kittitas County Commissioners
- Kittitas County Farm Bureau
- Kittitas Chamber of Commerce
- The Wilderness Society
- Back Country Horsemen of Washington
- Evergreen Mountain Bike Alliance
- Neighboring landowners
- Yakima Basin Integrated Plan Workgroup
- Kittitas County Field and Stream
- Friends of the Teanaway
- Washington Trails Association
- Washington State Snowmobile Association
- Off-road vehicle interests
- Yakama Nation
- Washington Department of Ecology
- Mountains to Sound Greenway Trust



Teanaway Community Forest

□ Management Plan Development



Photo courtesy of NKC Tribune

Teanaway Community Forest

- Management Plan Development
 - Meetings



Photo courtesy of NKC Tribune

Teanaway Community Forest

- Management Plan Development
 - ▣ Field trips...



Teanaway Community Forest

- Management Plan
- Community Outreach...

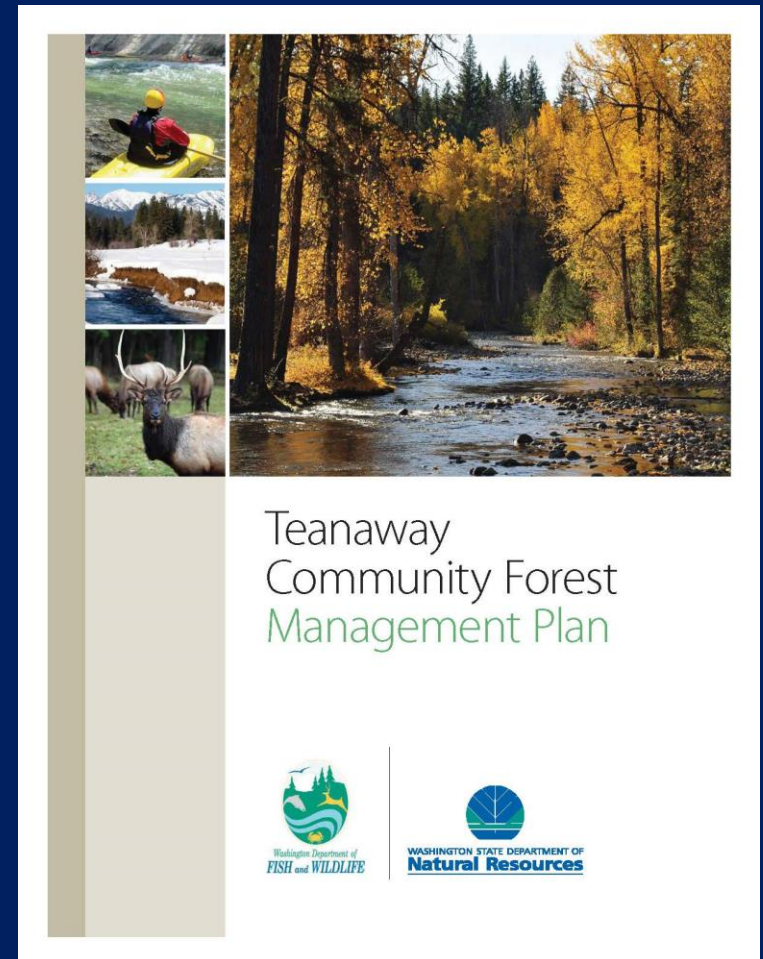


Photo courtesy of NKC Tribune

Teanaway Community Forest

- Management Plan
 - 5 Goals
 - Objectives
 - Strategies
 - Priority Actions

- Completed June 2015



Teanaway Community Forest

- ▣ How are we doing?
- ▣ Protecting watershed
- ▣ Working Lands
- ▣ Habitat Restoration
- ▣ Community

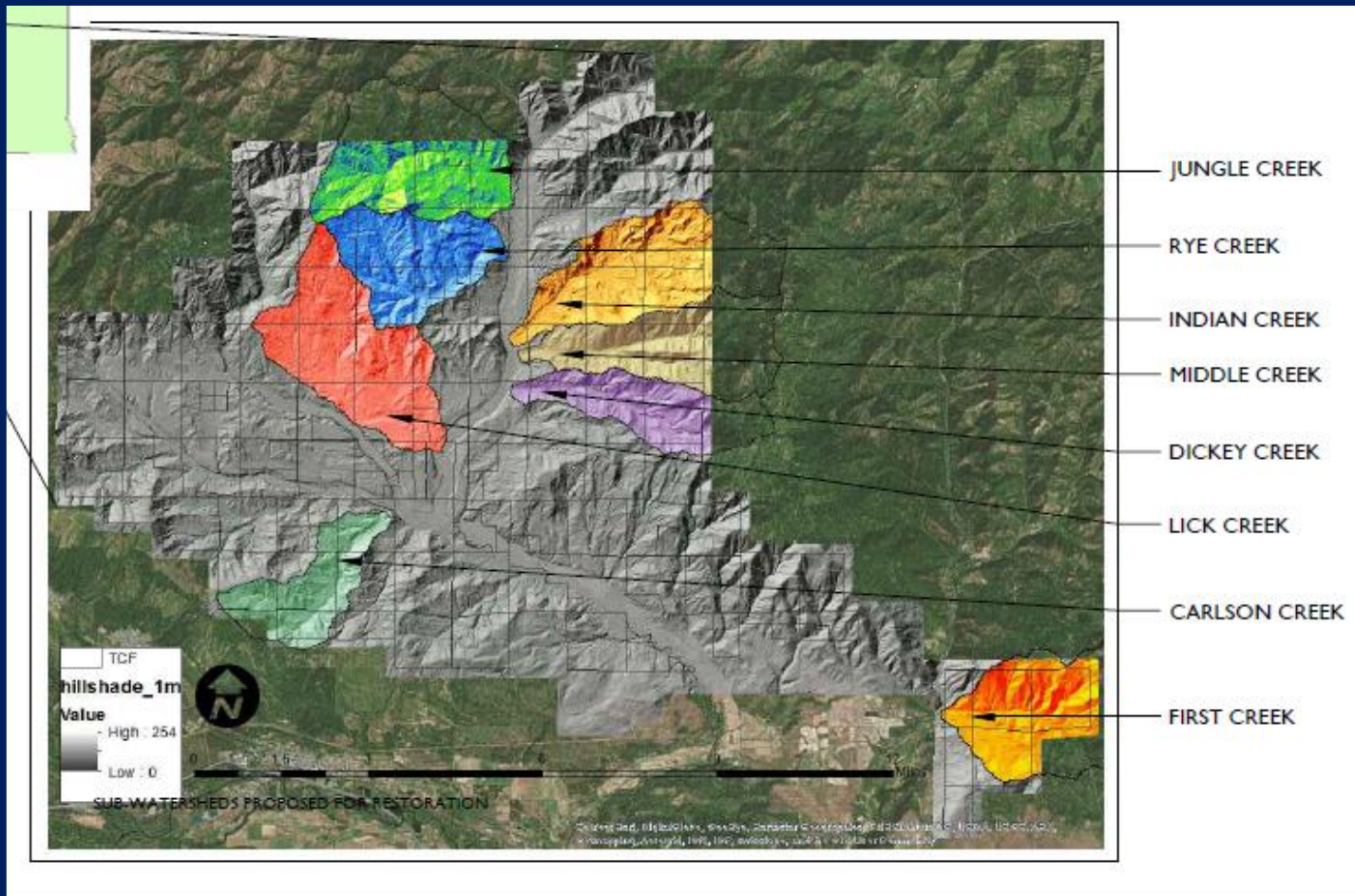


TCF Management



- How are we doing balancing priority activities from 5 goals?
- How can these activities be connected to build upon and support each other?

TCF Management - Restoration



8.57 miles of stream and 125 acres of floodplain in 8 sub-basins

TCF Management - Roads

Road Maintenance



Fish Barriers



TCF Management - Working lands

Grazing



Forestry



TCF Management – Working Lands

Grazing Sub-
committee



Photo courtesy of B. Johnson

TCF Management - Recreation

Only health
and safety
improvements



TCF Management - Restoration Connections



TCF Management - Connections

Group
juggling



TCF Management - Summary

- Some priority activities are further along than others
- Making connections between priority activities requires coordination and collaboration



