

South Central Washington Shrub Steppe Partnership

- Kittitas Cons. District
- The Nature Conservancy
- Nat. Res. Cons. Serv.
- US Army Yakima Training Center
- US Fish Wild. Serv.
- North Yakima Cons. District
- Bur. Land Mgt.
- Grant Cons. District
- WSU Extension
- Yakama Nation
- Wash. Dept. Fish Wild.

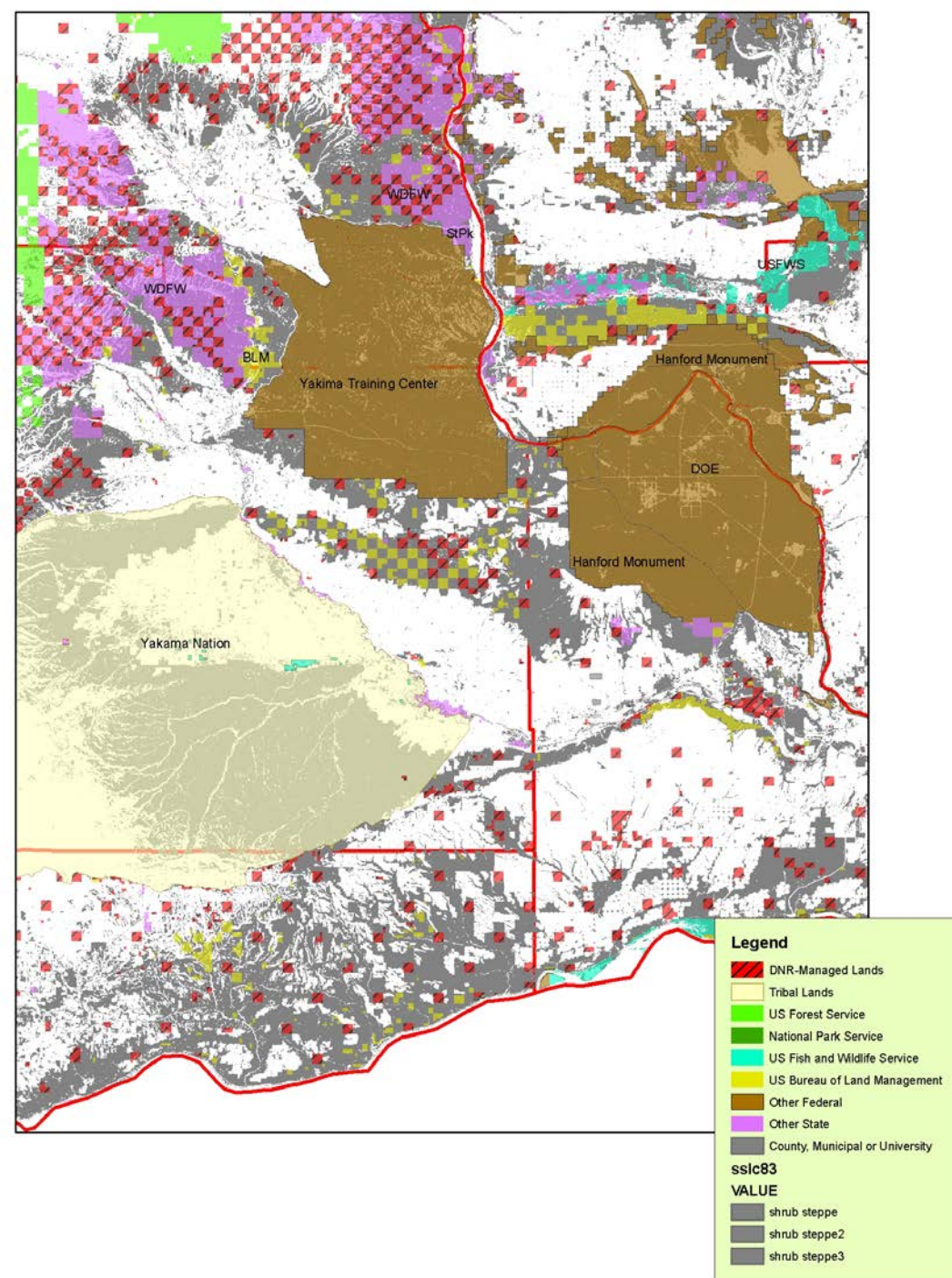
An aerial photograph of a vast, rolling landscape. The foreground is covered in dense, scrubby vegetation, appearing in shades of blue and green. The middle ground shows rolling hills and valleys, with some areas appearing more open and brownish. In the background, a range of mountains is visible under a clear sky. The overall scene is a wide, open landscape.

Partnership Purpose

**Conserve the shrub
steppe/rangeland landscape
in Benton, Yakima, Grant,
and Kittitas Counties**

Focal Landscape

Kittitas Yakima Benton Grant



Partnership Goals

1) Economically viable rangelands



2) Sustainable military training



3) Habitat connectivity



Partnership Goal #1:
Economically Viable
Rangelands

- **Support ranching operations that sustain rangeland health & open space**
- **Provide alternatives to land conversion from existing shrub steppe**

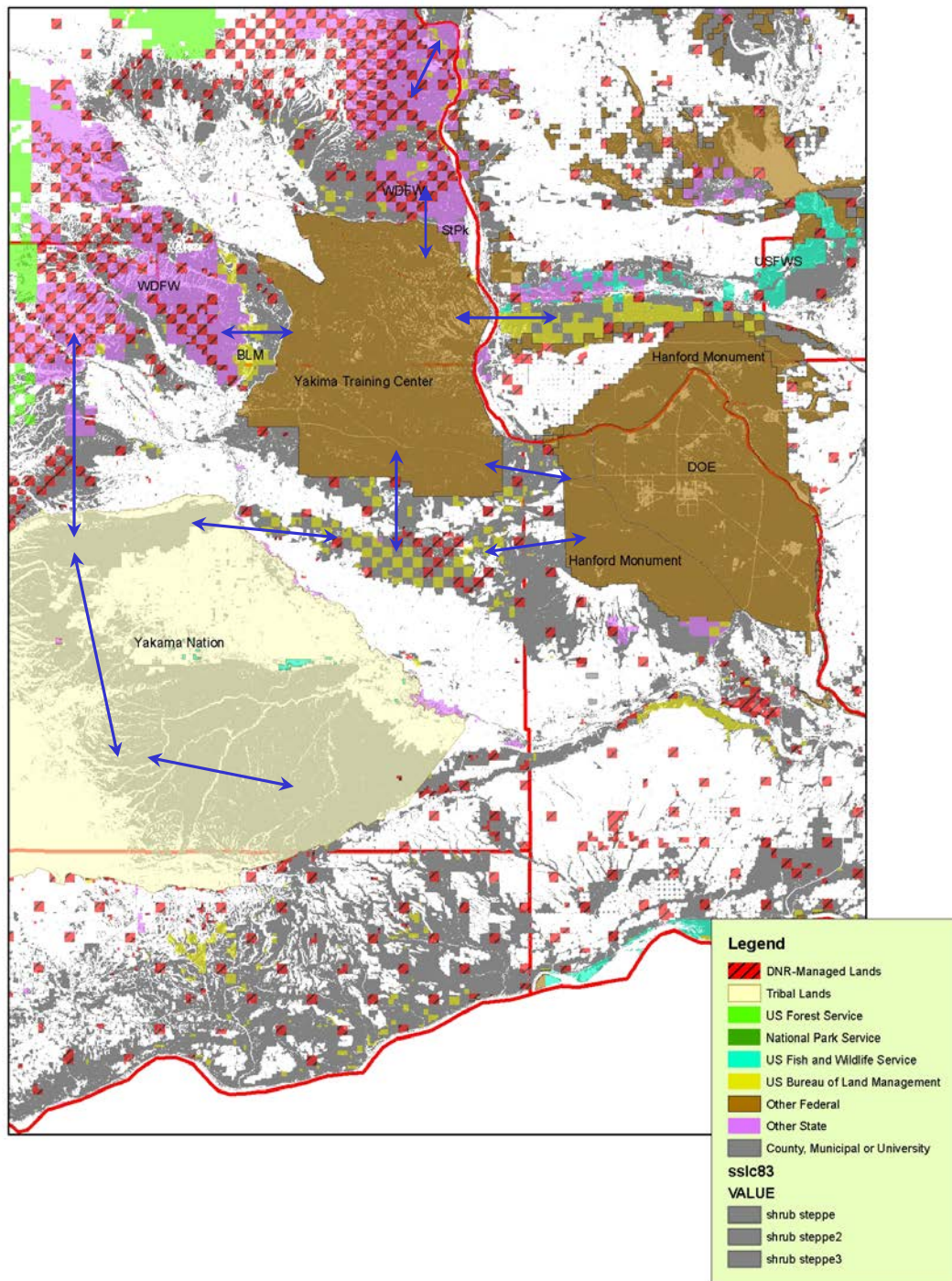


Partnership Goal #2:
**Sustainable Military
Training**



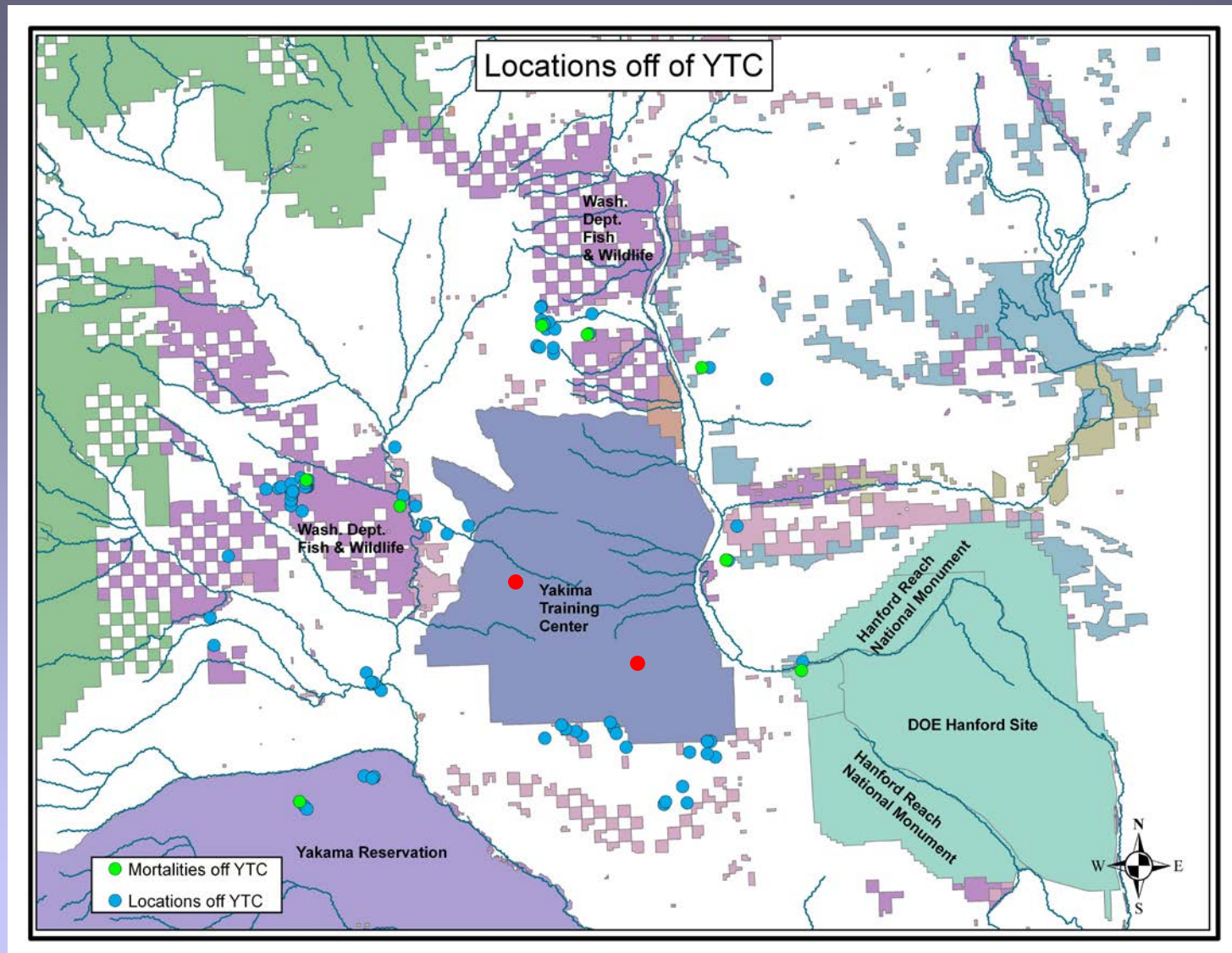
- **Reduce encroachment on borders**
- **Species Conservation on/off post**
- **Rangeland health**

Partnership Goal #3: Habitat Connectivity



Example of Importance of Habitat Connectivity

Translocated Greater Sage-Grouse Movements (2004 - 2006)



Threats to Existing Habitat Connectivity

Agricultural Breakout
Energy Development
Urbanization

An aerial photograph of a vast agricultural landscape. The terrain is a patchwork of green fields, many of which are planted in rows of crops, likely corn. There are several small farmsteads with white buildings and blue roofs scattered throughout. A winding road or canal cuts through the fields. In the upper right corner, a larger body of water is visible. The overall scene depicts a typical rural agricultural setting.

Threats:
Agricultural Breakout

Threats: Energy Development



Threats: Energy Development



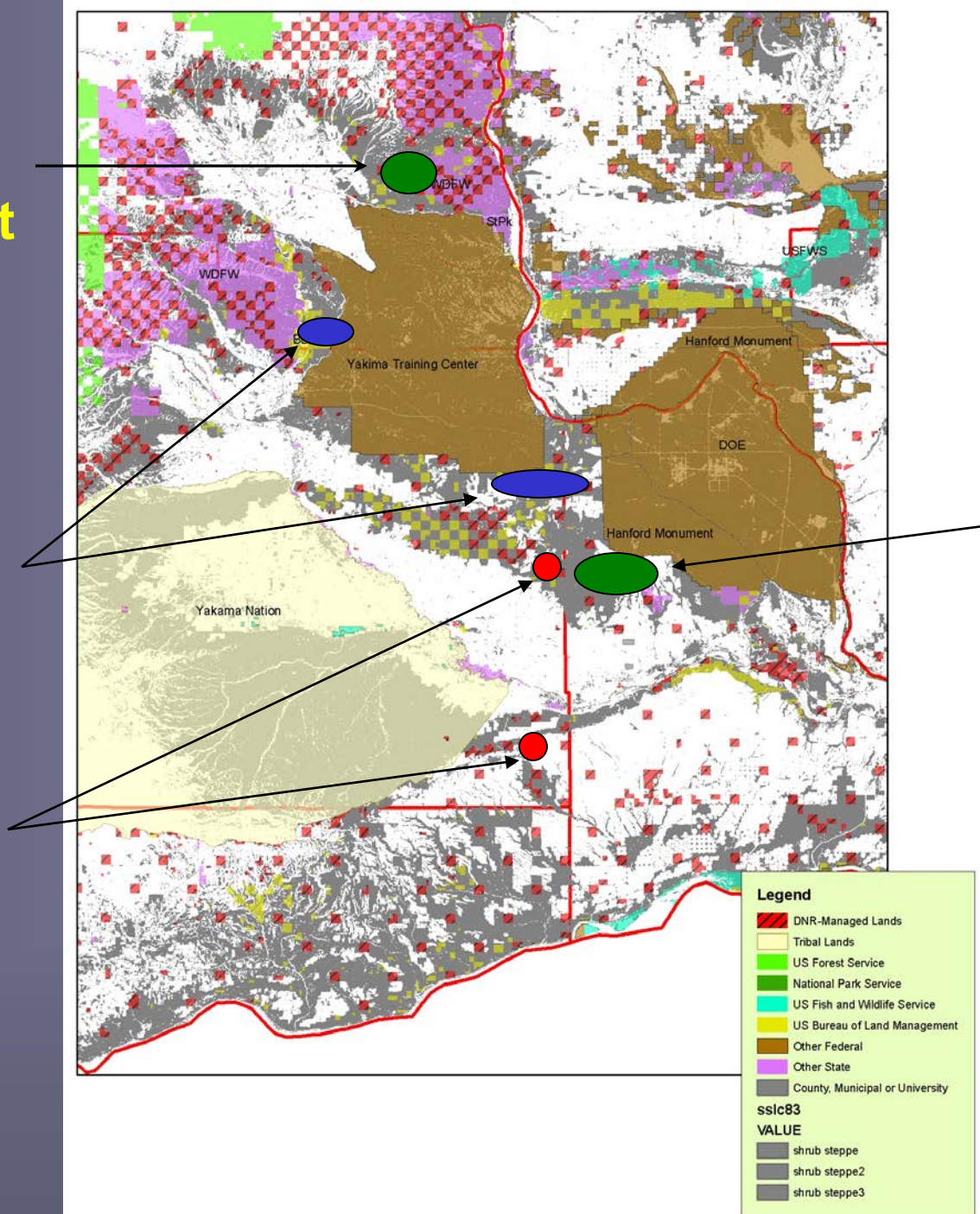
Threats: Urbanization



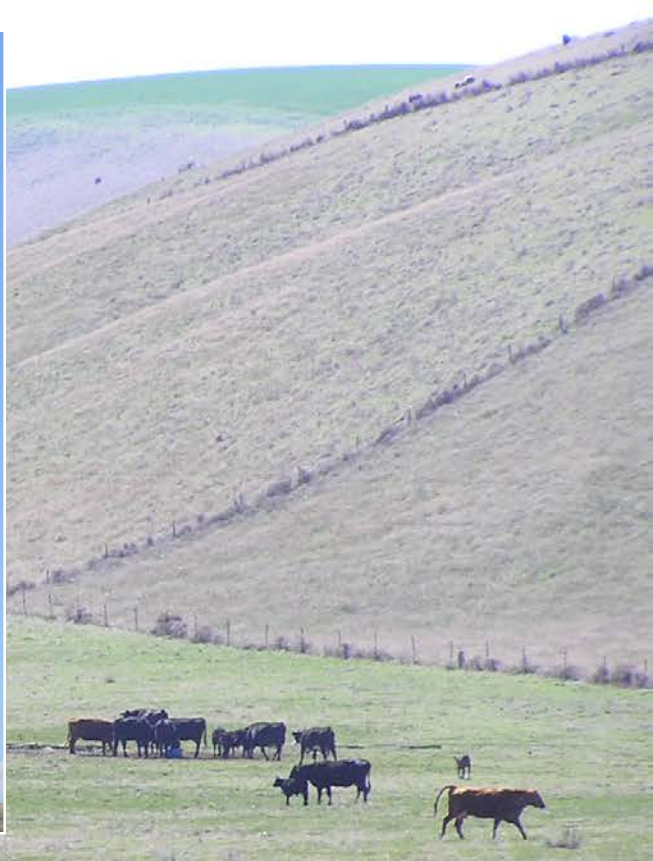
**Wild Horse
Wind Project**

**Proposed
Reservoirs**

**Exploratory
Natural Gas
Wells**



**Proposed
Wind
Project**



Partnership Roles & Tools

Partner

Role

**Private
Landowners**

**Cons. Districts
Nat. Res. Cons. Serv.
The Nat. Cons.
WSU Extension**

**BLM
Yakama Nation
WDFW
USFWS
US Army**

**•Voluntary open space
conservation**

**•Assist local citizens
conserve natural
resources**

**•Non-regulatory
•Education/Outreach**

**•Land Managers
•Grant Writing
•Management Plans
•Species/Habitat
Specialists**

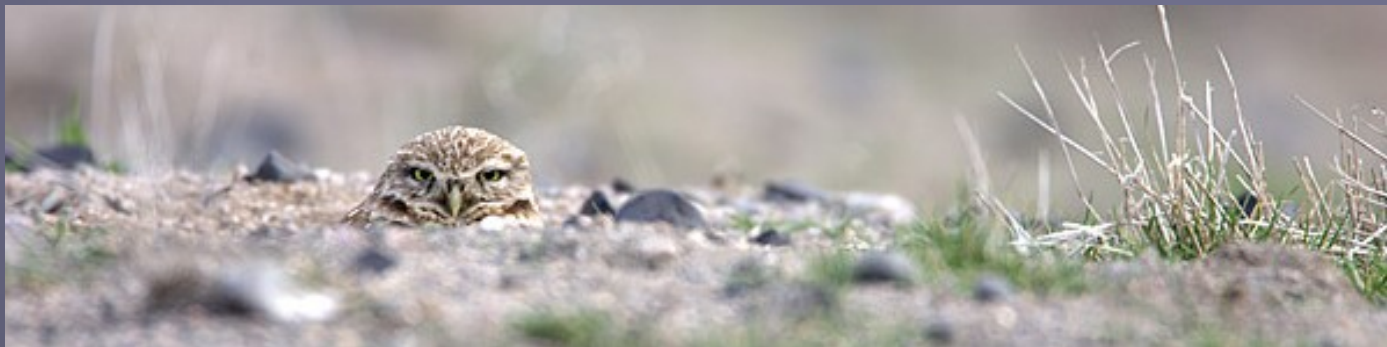


Partnership Tools: Farm Bill Programs

- **Conservation Reserve Program (CRP)**
 - Annual rental payments
 - Cost share for vegetation establishment
- **Wildlife Habitat Incentive Program (WHIP)**
 - 75% cost share for vegetation establishment
 - No rental payments

Partnership Tools: Farm Bill Programs

- **Environmental Quality Incentives Program (EQIP)**
 - Pay up to \$450 K per individual
 - Soil, Water & Wildlife conservation
- **Conservation Securities Program (CSP)**
 - Base payment 5-15% fair rental rate plus 75% cost share
 - Rewards ongoing stewardship



Partnership Tools: Farm Bill Programs



- **Grassland Reserve Program (GRP)**
 - 10-30 year contracts or permanent easements
 - 75% restoration cost share
- **Farm & Ranch Lands Protection Program (FRPP)**
 - 30-year or perpetual easements against development
 - Provides up to 50 percent of the land's value

Partnership Tools: Other Federal Programs

- **DOD Army Compatible Use Buffers Program**
 - Funds efforts to conserve habitat/open space around military installations
 - Program funding \$12-20 million annually
- **USFWS Partners For Fish & Wildlife**
 - Habitat restoration for listed, candidate, proposed or other at-risk species
 - \$25 K cap





Partnership Tools: State Programs

- **Washington Wildlife & Recreation Program**
 - Biannually funded \$100 million
 - Acquisitions or easements
 - Farmland Preservation Program
- **WDFW Landowner Incentive Program**
 - Easements or habitat restoration
 - 25% non-federal match; \$50 K landowner cap

Recap

✓ Partners

✓ Purpose

✓ Focal

Landscape

✓ Goals

✓ Threats

✓ Roles

✓ Tools

QUESTIONS?

