

Yakima Basin Fish and Wildlife Recovery Board

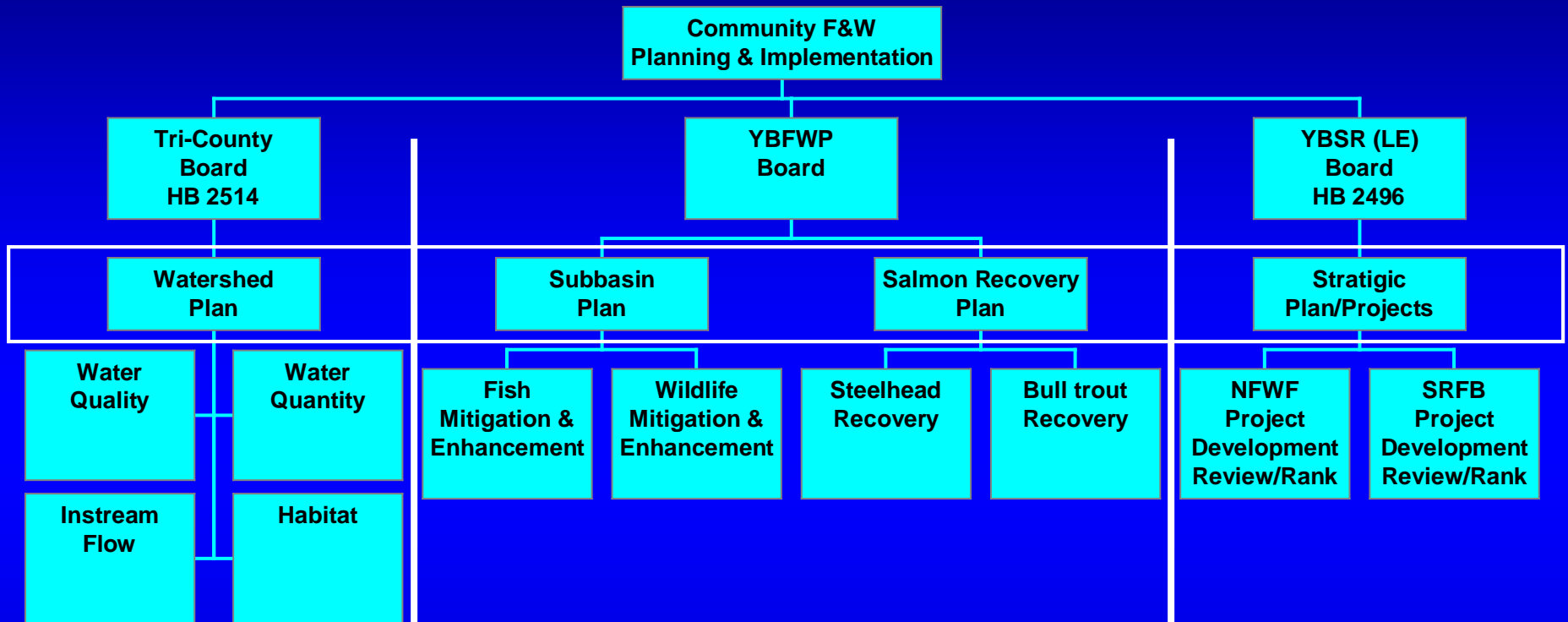
Board Formation

Planning Processes

Project Reviews & Funding

Next Steps for the Board

Basin Plans and Implementation



Three Counties, Cities,
& Irrigation Dist.

Two Counties
Approved

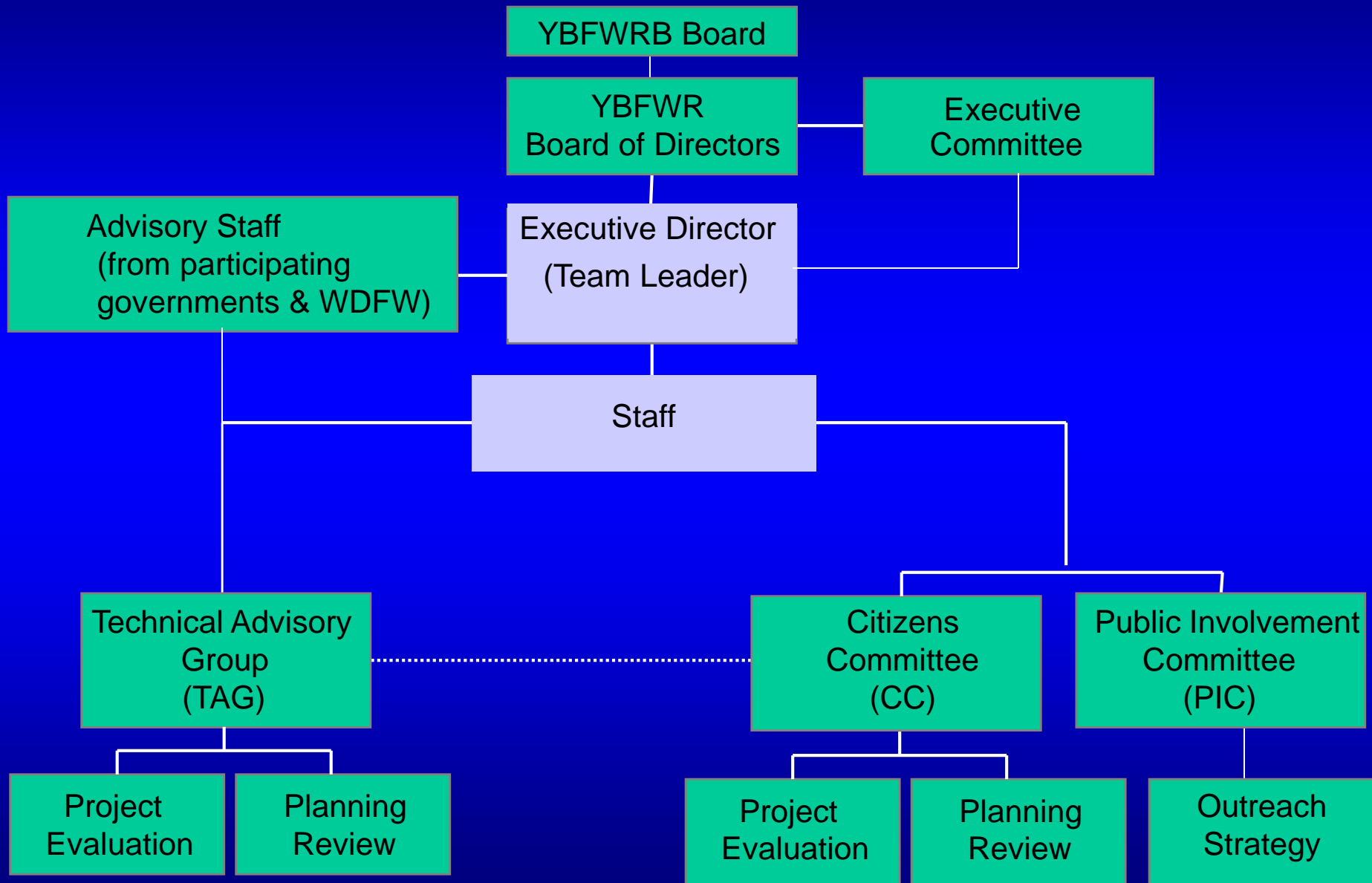
Two Counties,
Cities, & YN

Three Counties,
Cities, & YN

Board Structure

- Incorporated as an independent non-profit organization
- Governed by a Board made up of Local Governments
- Funded through WDFW & the Governor's Salmon Recovery Office

Yakima Basin Fish & Wildlife Recovery Board



Current YBFWRB Products

- Plans
 - Subbasin Plan (BPA)
 - Salmon Recovery Plan (ESA)
 - Lead Entity Strategic Plan (SRFB)
- Reviews
 - BPA Project review
 - SRFB Project review
 - Community Salmon Fund review

The Yakima Subbasin Plan

- Approved by the Northwest Power & Conservation Council in 2004
- Covers a wide range of fish & wildlife species
- Provides an inventory of existing projects
- Assesses limiting factors for focal species
- Identifies general restoration strategies, but not specific projects

Yakima Subbasin Salmon Recovery Plan

- Part of Statewide Strategy to Recover Salmon
- Focuses just on listed salmonids
(Steelhead & Bull Trout)
- Sets quantifiable targets for fish populations
- Identifies 157 specific actions
- Draft accepted by the Governor last November
- Currently undergoing final edits

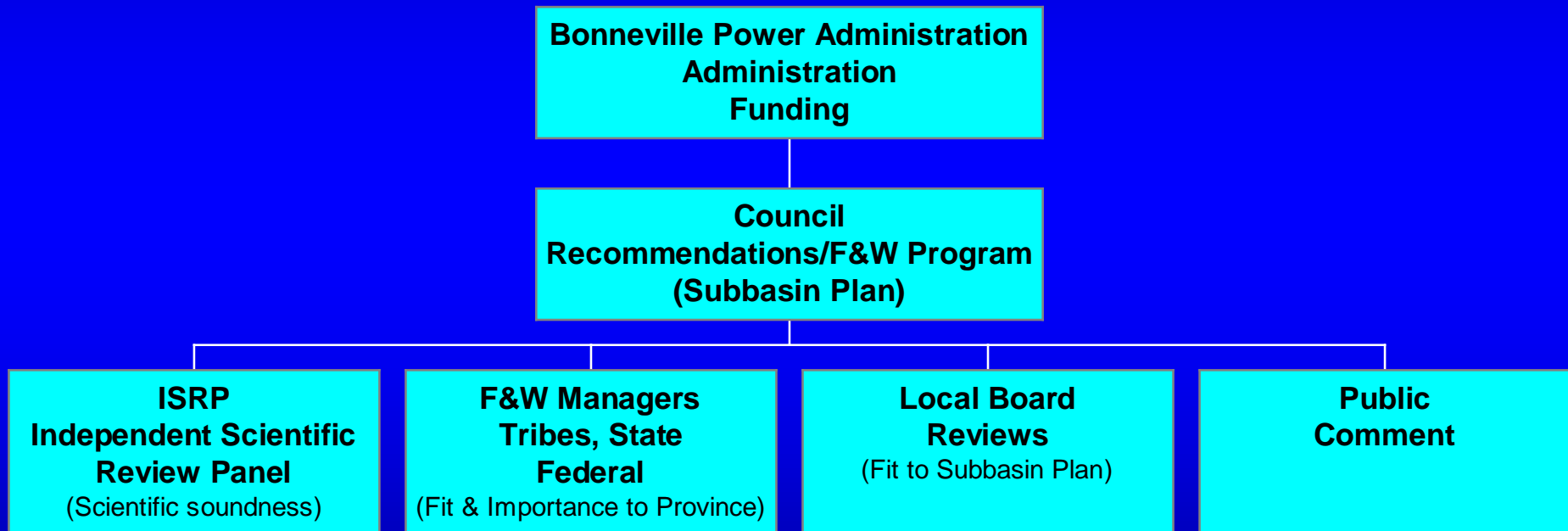
Linking our Recovery Plan to NOAAs

- Currently revising our Recovery Plan so it can be incorporated into NOAA's Mid-Columbia Steelhead Recovery Plan
- NOAA Plan will include tighter estimates of benefits and financial costs of actions
- NOAA Plan is essential in justifying Federal Pacific Coast Salmon Recovery Funds to Congress

BIOP Remand Action Matrix

Subbasin / Watershed Action Will Occur	Action	Action Purpose	Limiting Factor(s)	Life Stage(s) Affected	Action Geographic Scale	Time Needed to Implement	Time Needed to Realize Benefit
Satus Creek	Two choices per action available	Only one choice available	Multiple choices available	Multiple choices available	Multiple choices available	Only one choice available	Only one choice available
Action 1							
Table 5.5, Satus Creek Steelhead	sediment control (reduce, improve irrigation return flows in lower Satus Cr)	Restoration	nutrient loading	Fry – Summer rearing juvenile	Site-specific	4-6 years	3-10 years
			excessive sediment load	Winter rearing juvenile			
				Holding – Spawning Adult			
Action 2							
Table 5.5, Satus Creek Steelhead	floodplain reconnection (lower Satus Cr and Satus Cr along Hwy 97)	Restoration	floodplain connectivity	All Stages	>10 miles	Expanded	3-10 years
			riparian condition				
			low flows				
			high water temperature				
Action 3							
Table 5.5, Satus Creek Steelhead	improve grazing management (continue cattle mgt, improve horse mgt)	Restoration	riparian condition	All Stages	>10 miles	Ongoing	3-10 years
			floodplain condition				
			high water temperature				
Action 4							
Table 5.5, Satus Creek Steelhead	provide passage at barriers (Hwy 97 crossing of Shinando Cr)	Restoration	physical barrier	Adult migration	Site-specific	4-6 years	3-10 years

BPA Project Review

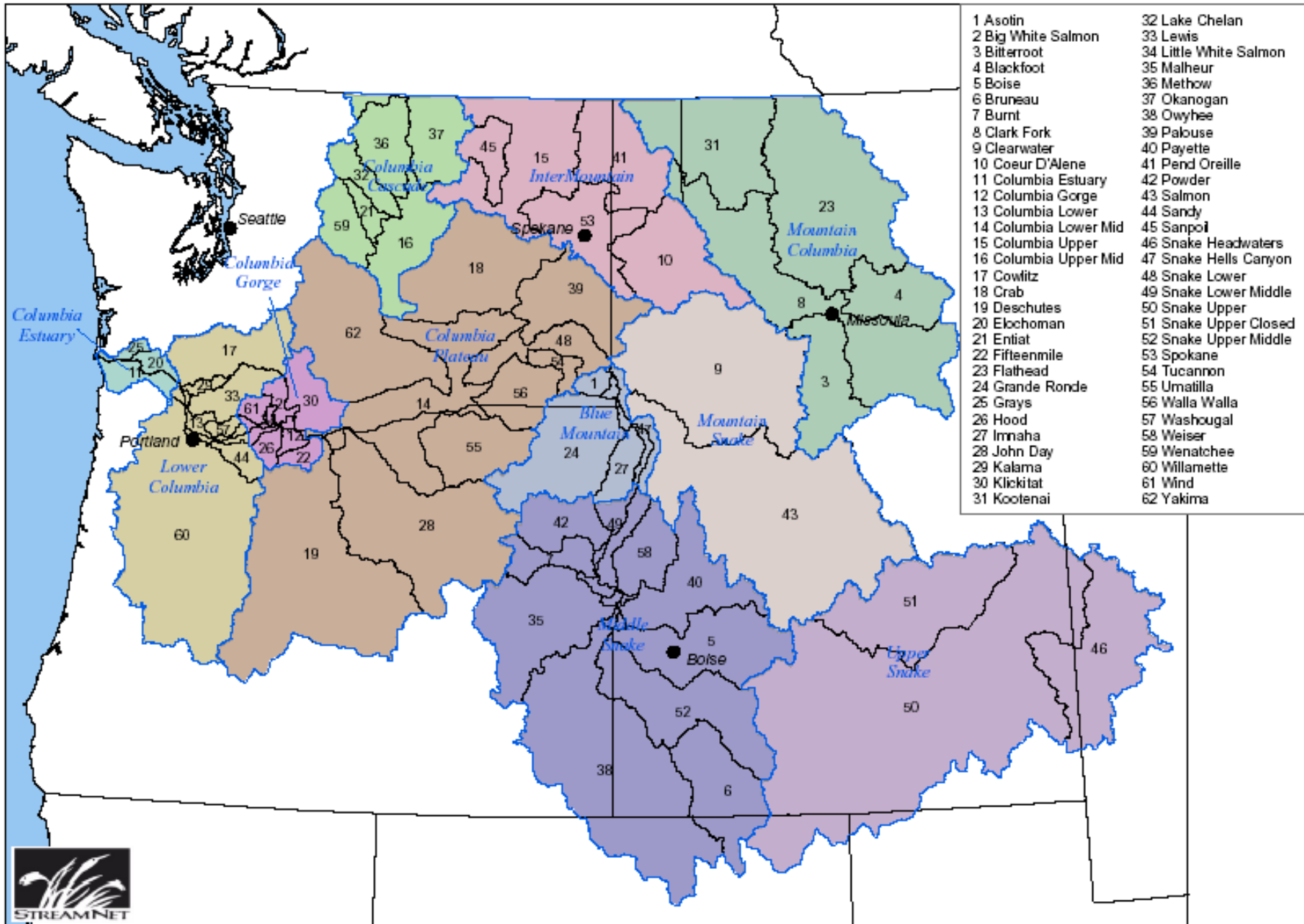


Budget - BPA

• Total Budget	<u>153,000,000</u>
• Council/ISRP Support	12,050,000
• Place holder	2,000,000
• Basin Wide	32,644,160
• Multi Province	13,411,338
• Province Allocation ⁽¹¹⁾	*92,894,502
•Columbia Plateau (Province)	21,748,203

•Crab, Deschutes, John Day, Palouse, Tucannon, Umatilla, Walla Walla, Columbia, Lower Middle, Snake Lower, and Yakima

Columbia River Basin Subbasins



Budget Estimate For Yakima Subbasin

• Funding Level	2004	11,802,931
	2005	11,236,121
	2006	11,606,270
• 16% Reduction		*9,700,000/Year
• Total Request 30 Projects	2007	24,768,795
	2008	19,034,081
	2009	26,903,575

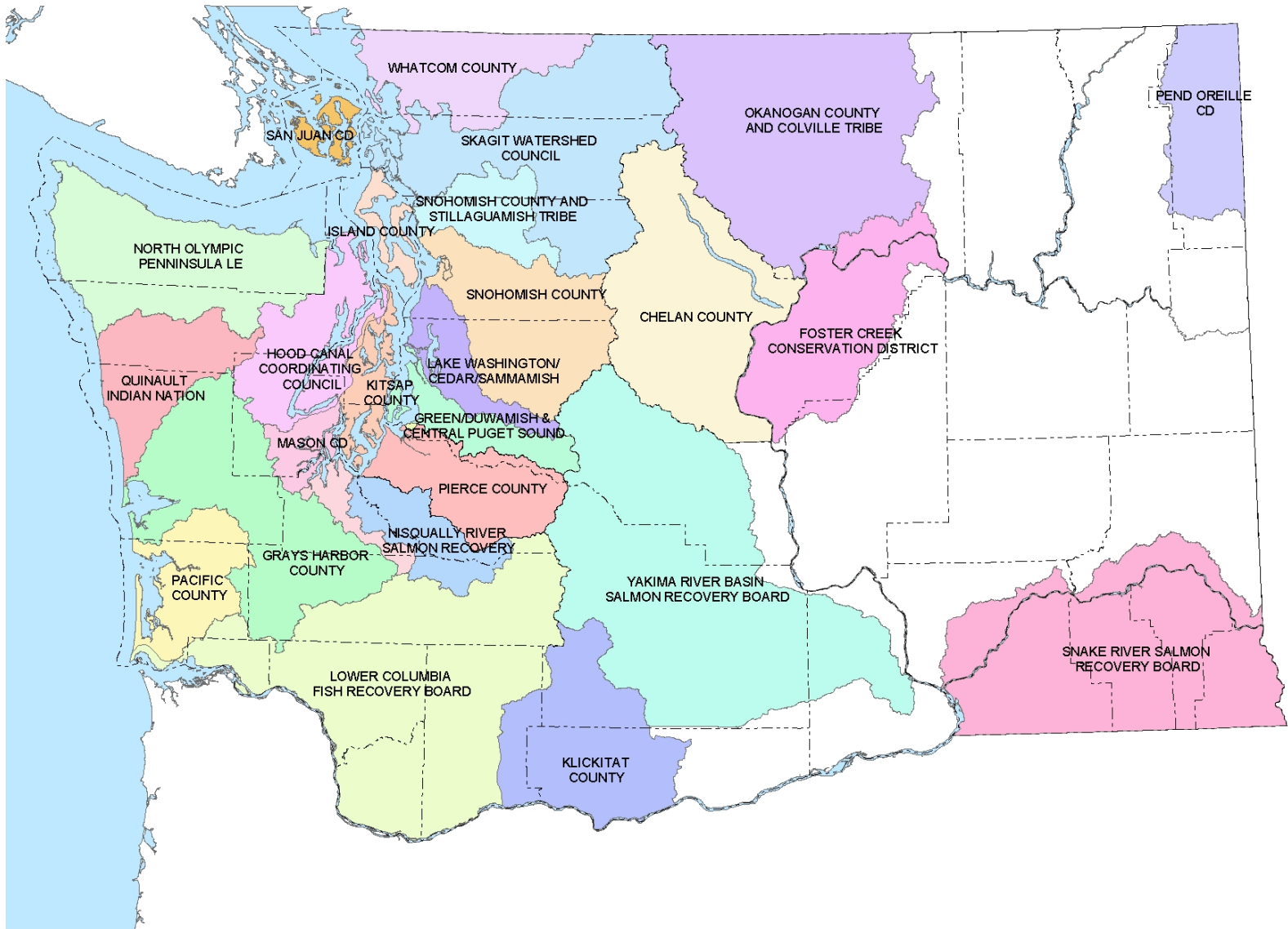
* This is a BPA desired reduction that could be adjusted based on feedback

Local Review Schedule 2006

- May 22nd – June 6th - TAG review applications
- June 7th - TAG evaluation of projects
- June 7th – 15th - Staff summarizes review
- June 16th - Submit the review to Council

Salmon Recovery Funding Board

Project Review 2005



Lead Entity Organizations

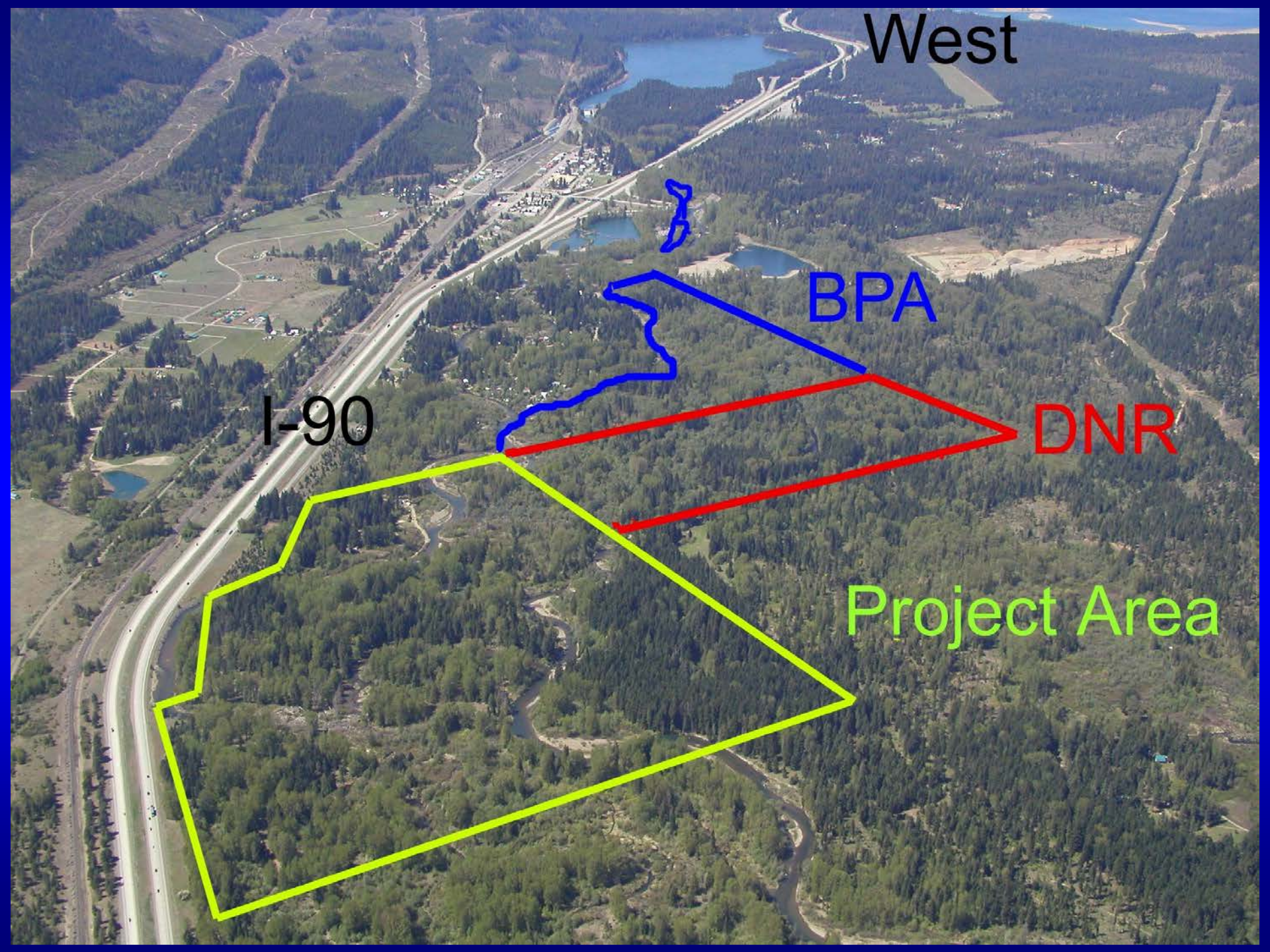
West

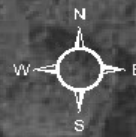
BPA

DNR

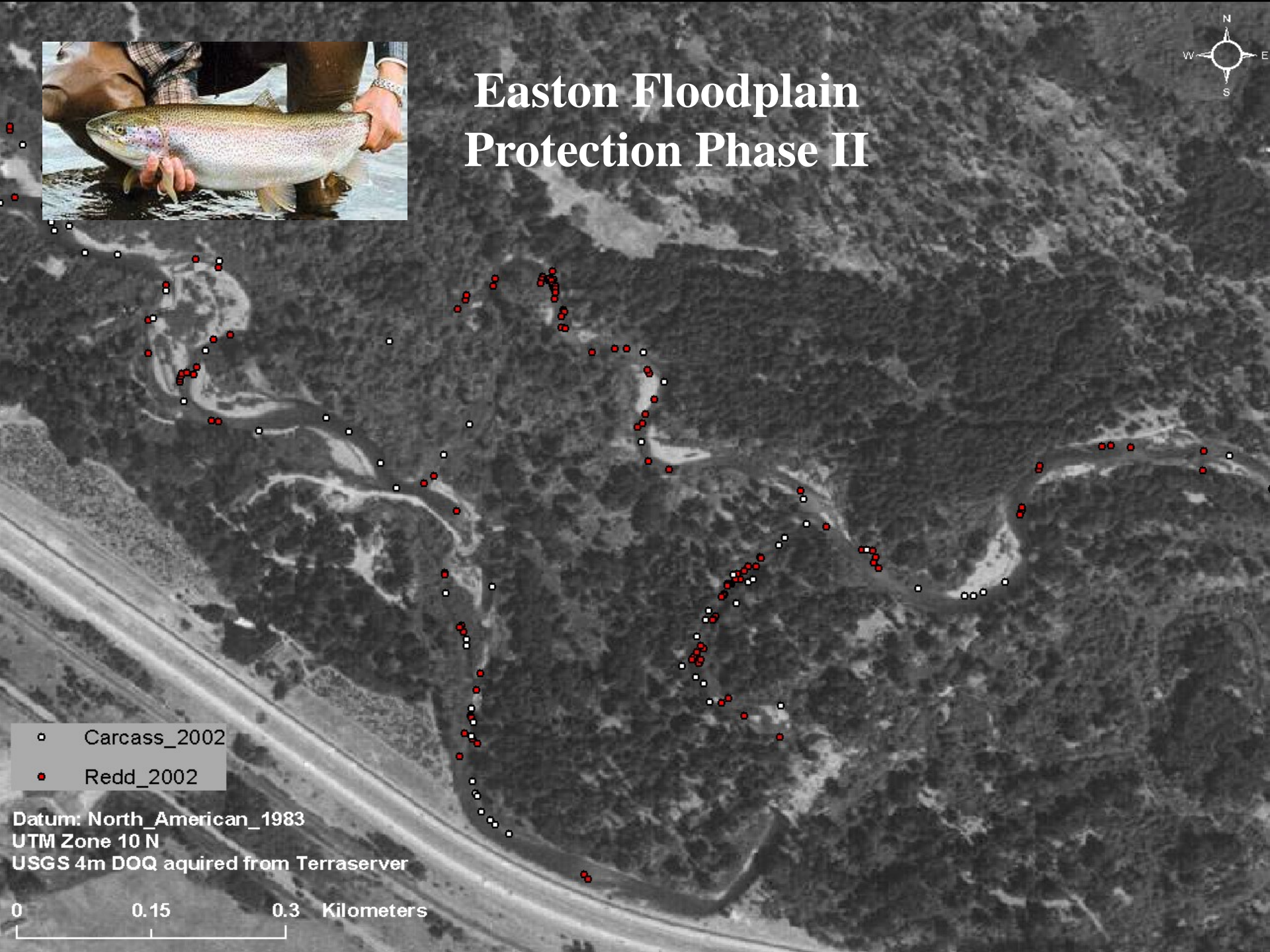
Project Area

I-90





Easton Floodplain Protection Phase II



- Carcass_2002
- Redd_2002

Datum: North_American_1983
UTM Zone 10 N
USGS 4m DOQ aquired from Terraserver

0 0.15 0.3 Kilometers

SRFB Project Funding Results

2005 Projects

	SRFB Amt	Sponsor Amt	Total Amt
1. Easton Reach Habitat Protection	528,985	306,500	835,485
2. NF Teanaway Floodplain Phase 2	461,740	83,000	544,740
3. Currier Creek Passage & Riparian	371,688	141,000	512,688
Total	\$1,362,413	\$530,500	\$1,892,913

2000-2005 Project

SRFB	5,774,031
CSF	120,000
<u>Sponsor</u>	<u>5,904,812</u>
Total	11,798,843

SRFB Project Review 2006

7TH ROUND FUNDING CYCLE TIMELINE

<u>July 21, 2006</u>	<u>Last day to accept applications</u>
Aug 04, 2006	TAG and CC receive applications
Aug 10, 2006 Aug 11, 2006	Applicant presentations to the TAG & CC
Aug 15, 2006	Receive final changes from applicants
Aug 24, 2006	TAG project evaluation
September 06, 2006	CC ranks projects
September 08, 2006	Board meets to authorize list
<u>September 11, 2006</u>	<u>Submit Ranked project list to SRFB</u>

Community Salmon Fund

National Fish and Wildlife Foundation

Product = Project Review 2005



Holmes restoration with
community involvement



CSF Project Funding Results 2005

- CSF provided funding for five projects
 - Holmes Riparian and Side Channel – YN
 - Horn Rapids Riparian Restoration – BCD
 - Lmuma Creek riparian restoration – KCCD
 - Lyle Creek Barrier Removal – KCCD
 - Taneum Creek Passage Design – YN

CSF Project Review 2006

- \$100,000 available
- Application and Selection Process
 - Fall 06 / Spring 07
 - Review by Ad Hoc Committee
 - Subset of the TAG & CC

Future Directions for the Board

- Building Political & Financial Support for Restoration Activities
- Focusing Restoration Activities on Key Priorities and Tracking Our Progress Towards Effectively Addressing Them

Building Political & Financial Support

- Participate in regional processes on behalf of the Yakima Basin to build support for fish & wildlife restoration programs
- Build local support and engagement for restoration activities through outreach and education efforts
- Work with project proponents to develop & seek funding for restoration projects identified as priorities

Focus on Priorities & Tracking Progress Towards Them

- Update plans as needed and ensure that they are linked to on-the-ground implementation of priority actions
- Track restoration efforts and provide regular overviews of the status of Fish & Wildlife restoration activities in the basin
- Coordinate development of a basin wide monitoring strategy that integrates work already underway in the basin with state & regional RM&E efforts