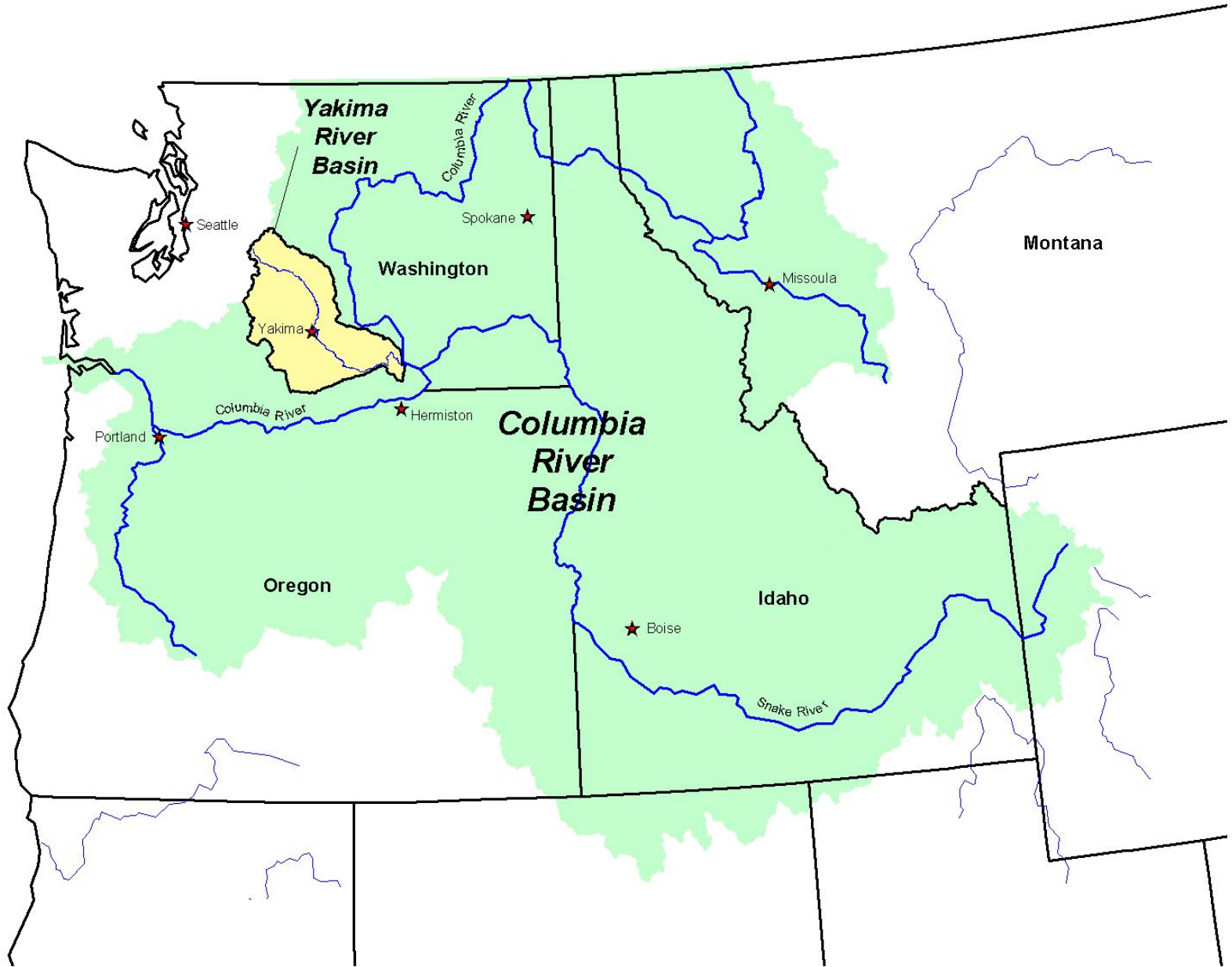


Yakima River Basin

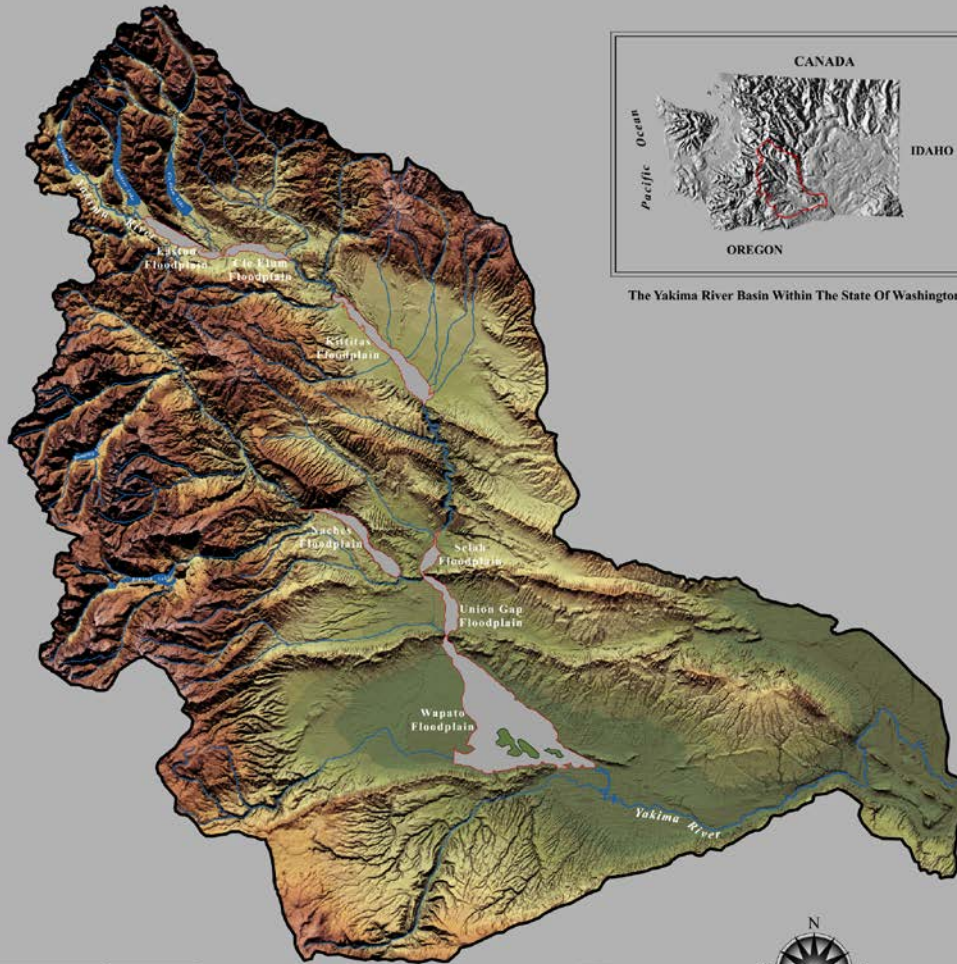
Yakima River Basin Water Enhancement Project
1994 - 2007

RECLAMATION



RECLAMATION

The Yakima River Its Major Tributaries And Seven Of Its Associated Alluvial Floodplains



The Yakima River Basin Within The State Of Washington



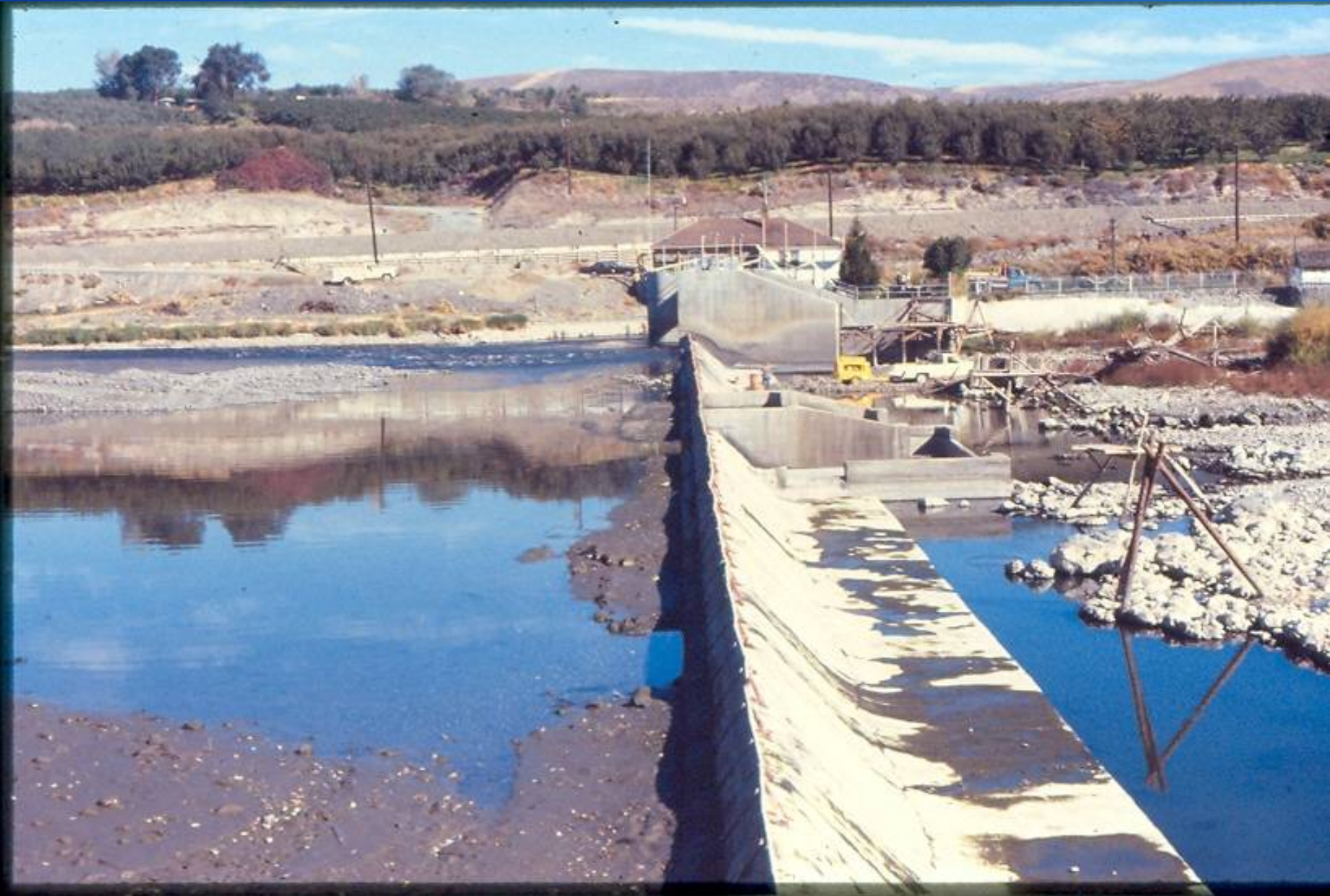
© Y.R.P. Not to be reproduced without permission

KEY

-  Hydrography
-  Holocene Floodplain



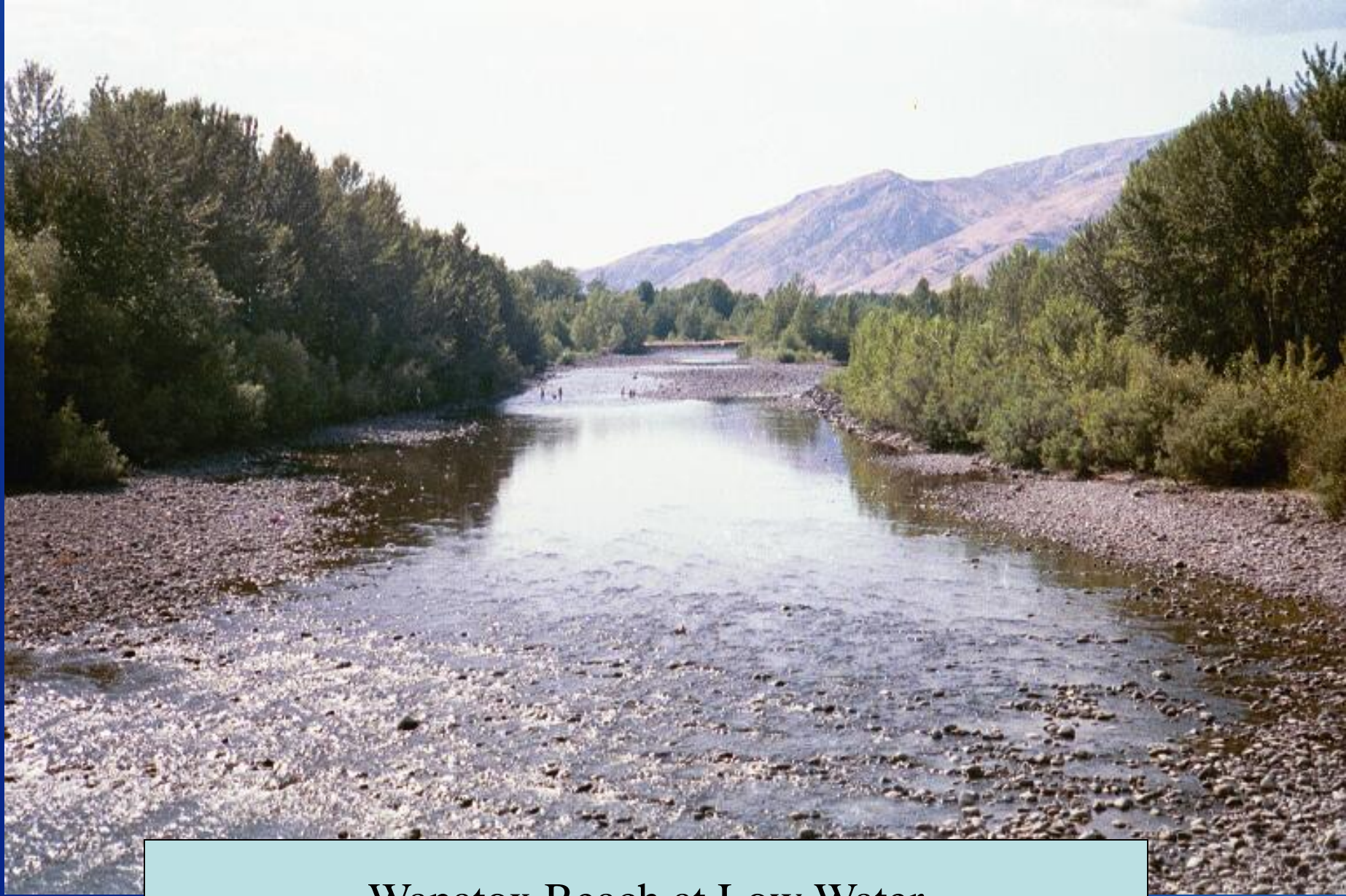
RECLAMATION



RECLAMATION



RECLAMATION



Wapatox Reach at Low Water

RECLAMATION



RECLAMATION

Yakima River Basin Water Enhancement Project

- Target Flows
- Water Conservation
- Land and Water Acquisition
- System Improvements
- Tributary Improvements
- Yakama Nation Program
- Operational Changes

RECLAMATION

Partnerships

- Yakama Nation, Washington State
Department of Ecology, Washington State
Dept. of Fish & Wildlife, Bonneville Power
Administration/Northwest Power Planning
Council, Army Corps of Engineers, Yakima
County, City of Yakima, U.S. Fish and
Wildlife Service, Environmental Protection
Agency, Industry, Landowners

Planning Documents

Report on Biologically Based Flows for the Yakima
River Basin

The Basin Conservation Plan

The Reaches Project

Interim Comprehensive Operating Plan

RECLAMATION

Water Conservation

- Most Districts Have Completed Initial Water Conservation Plans
- Several Plans in the Feasibility Phase
- Willing Participants Only
- Two Districts Currently Entering the Implementation Phase
- 2/3 Conserved Water to Instream Flow
- 1/3 Conserved Water to Irrigation

Conservation

Conveyance water

Change of use of the water

Not new water

Only affects the reach it was used in

Allows for better management of the water

RECLAMATION

Sunnyside Conservation

- Adjudication Court Settlement
- Reregulating Reservoirs
- Automated Check Structures

- Reach By Reach Improvements
- Canal Automation/Reregulating Reservoirs
- Canal Lining/Pressurized Laterals
- On-Farm Improvements/Scheduling
- Tiered Pricing

RECLAMATION

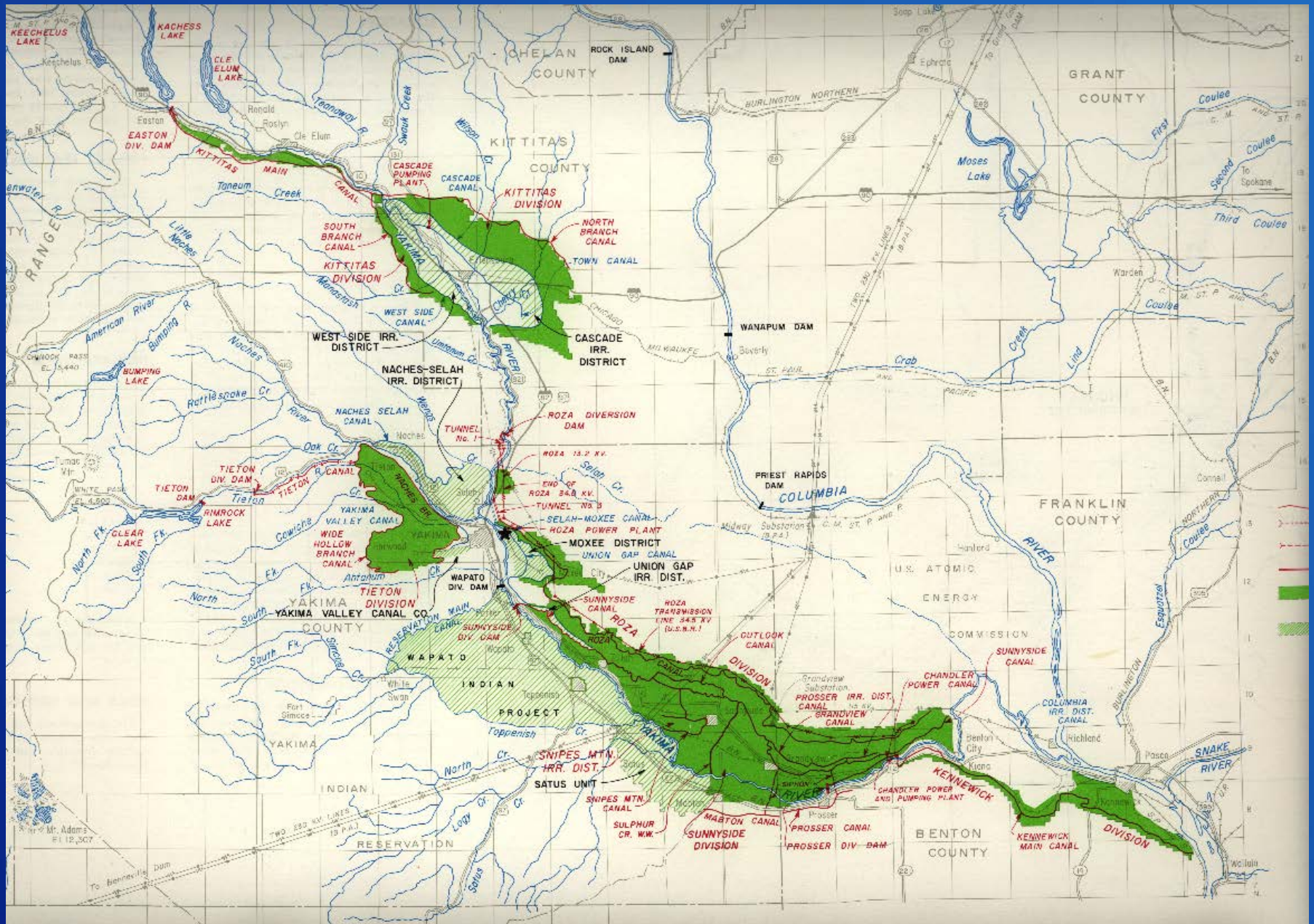


Langemann Gate

RECLAMATION



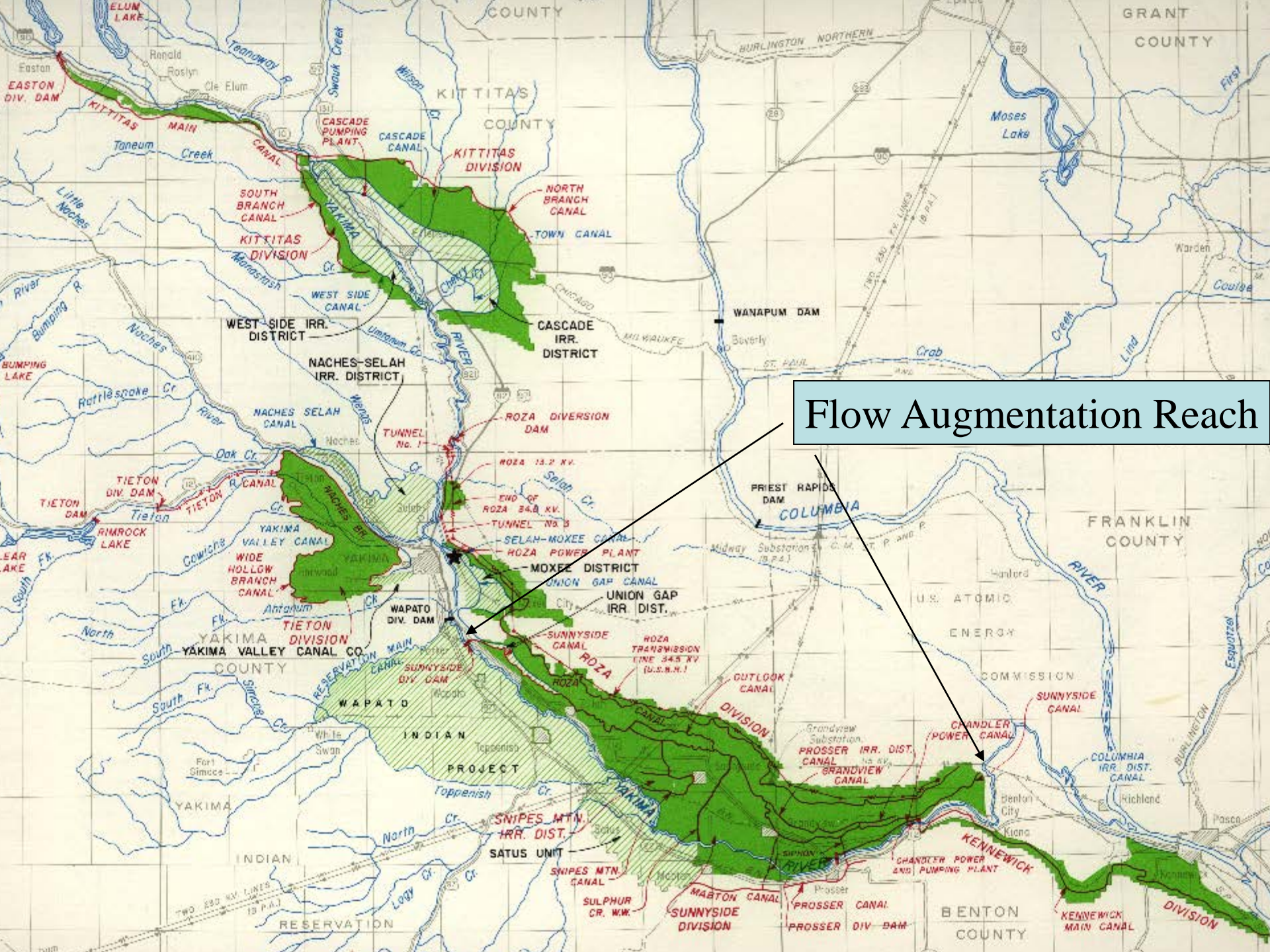
RECLAMATION



RECLAMATION

Benton Conservation

- Change in Point of Diversion
- New Pressurized Pump System



Flow Augmentation Reach

Yakama Nation Programs

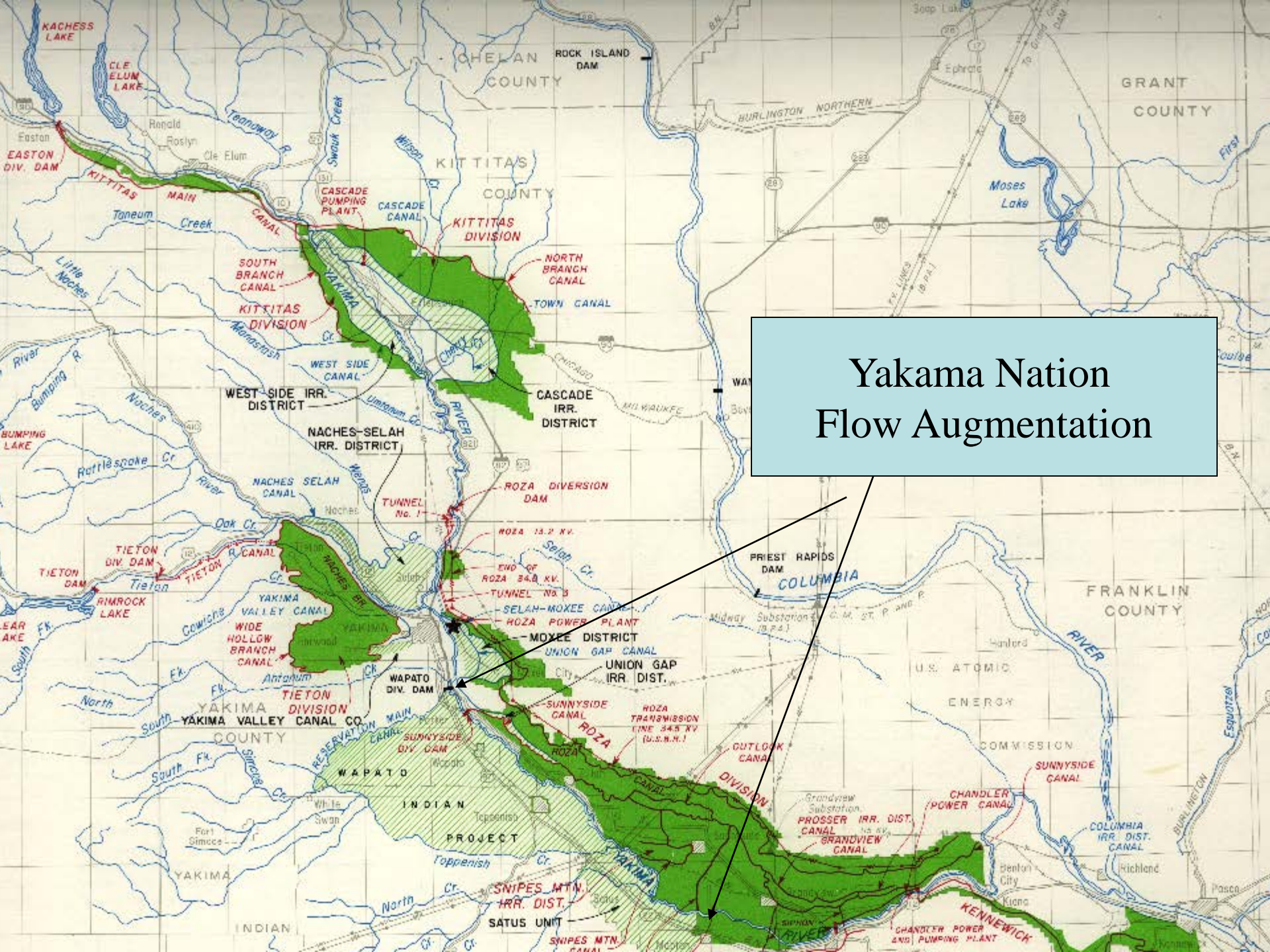
- Toppenish Corridor Project
- Wapato Irrigation Project Improvements
- Demonstration Project

Toppenish Corridor Project

- Plans in the Final Completion Phase
 - Prioritizing Components
 - Completing Engineering Construction Estimates

Wapato Irrigation Project Improvements

- Plan Completed
- Tribal Council Approval Completed
- Satus Pumping Plant



Yakama Nation Flow Augmentation

Wapatox Water Right Acquisition

- Key Aggraded Reach
- Critical Location for Steelhead
- Instream Flow Issues



Wapatox Power Plant

RECLAMATION



RECLAMATION



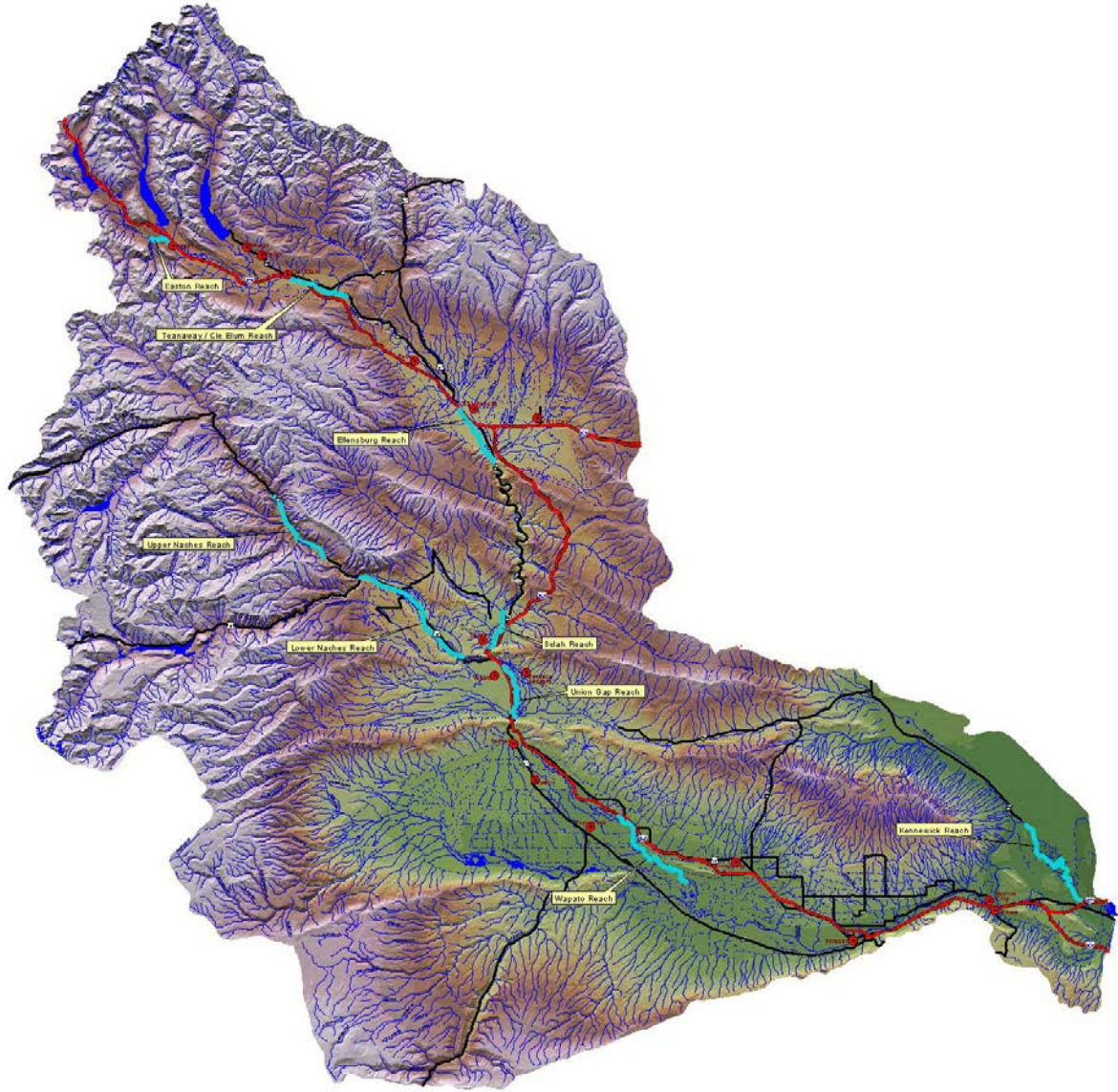
Naches River in Wapatox Reach June 1992

RECLAMATION

Critical Reaches Study

- Identify & Prioritize Critical River Reaches
- Provide Recommendations On Where to Purchase Water & Land
- Provide Scientific Rationale for Restoring Habitat
- Provide a Baseline and Protocol for Long-Term Monitoring
- Aerial Photo Analysis and GIS Mapping

RECLAMATION



RECLAMATION

Wenas Creek Tributary

- Priority Cultural Site – Yakama Nation Village Site Requiring Protection
- Approximately 1 Stream Mile
- Electrofishing Results Indicate that Fish are Actively Using this Habitat
- Very Little Connected Backwater Habitat in Entire Selah Reach
- Return Flow Provides Habitat During Significant Portions of Summer Also

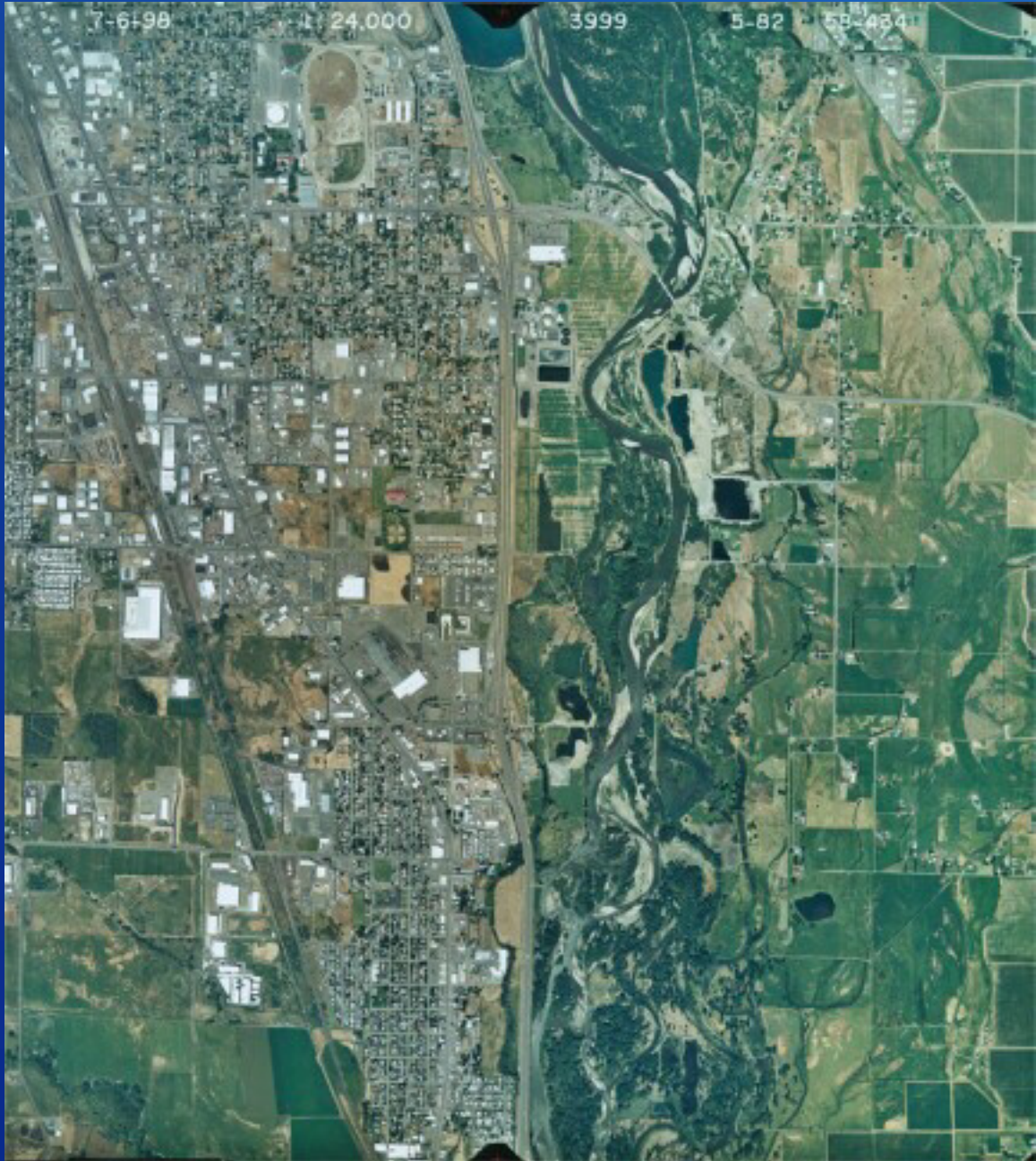


Gap to Gap Reach

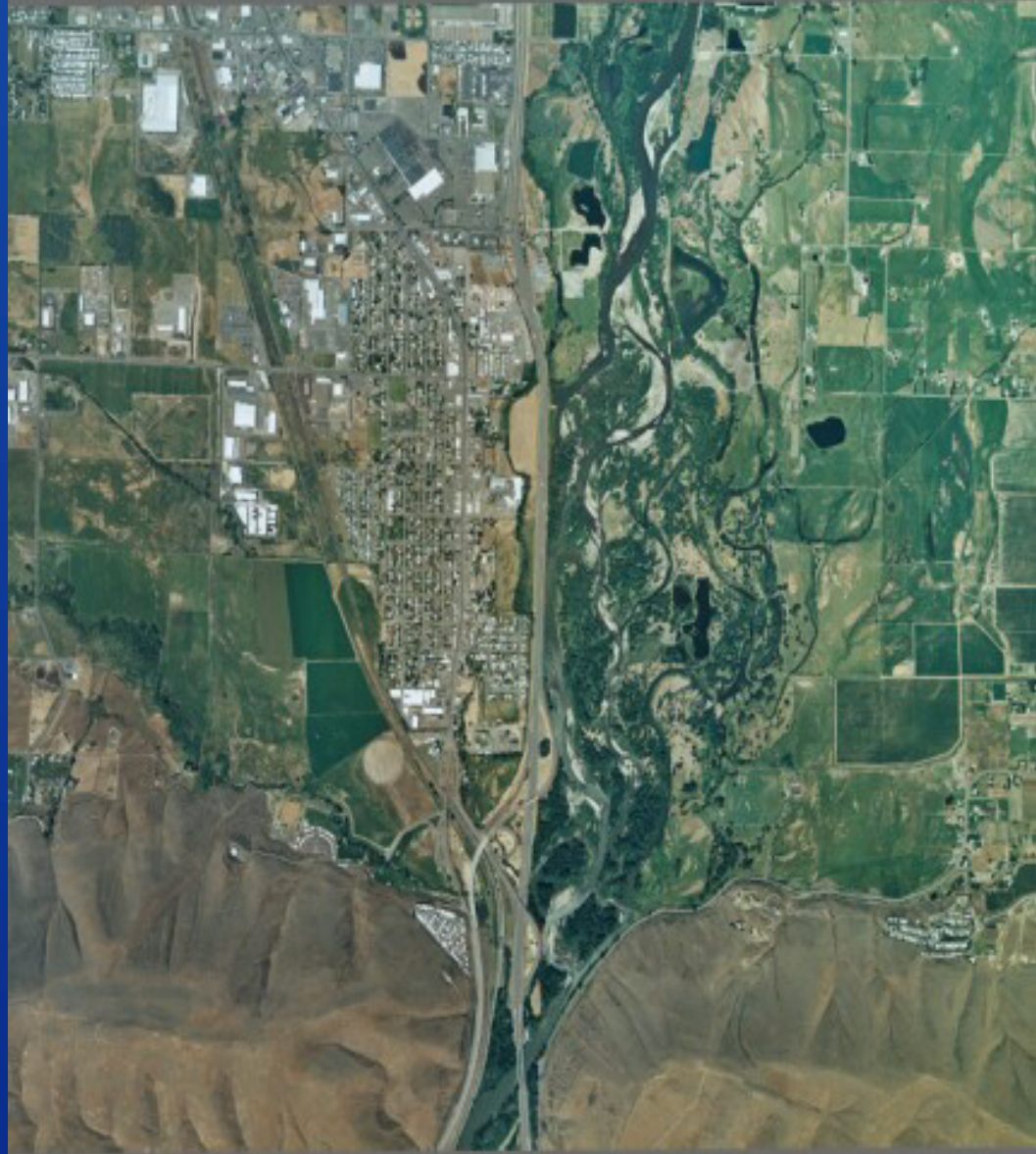
- Unique Key Location Below Confluence of Naches and Yakima Rivers
- Key Staging Area for Anadromous Outmigrants
- High Value Habitat Diversity and Food Source
- Wetland Replacement (Mitigation) Area - Water Conservation

Gap to Gap Reach

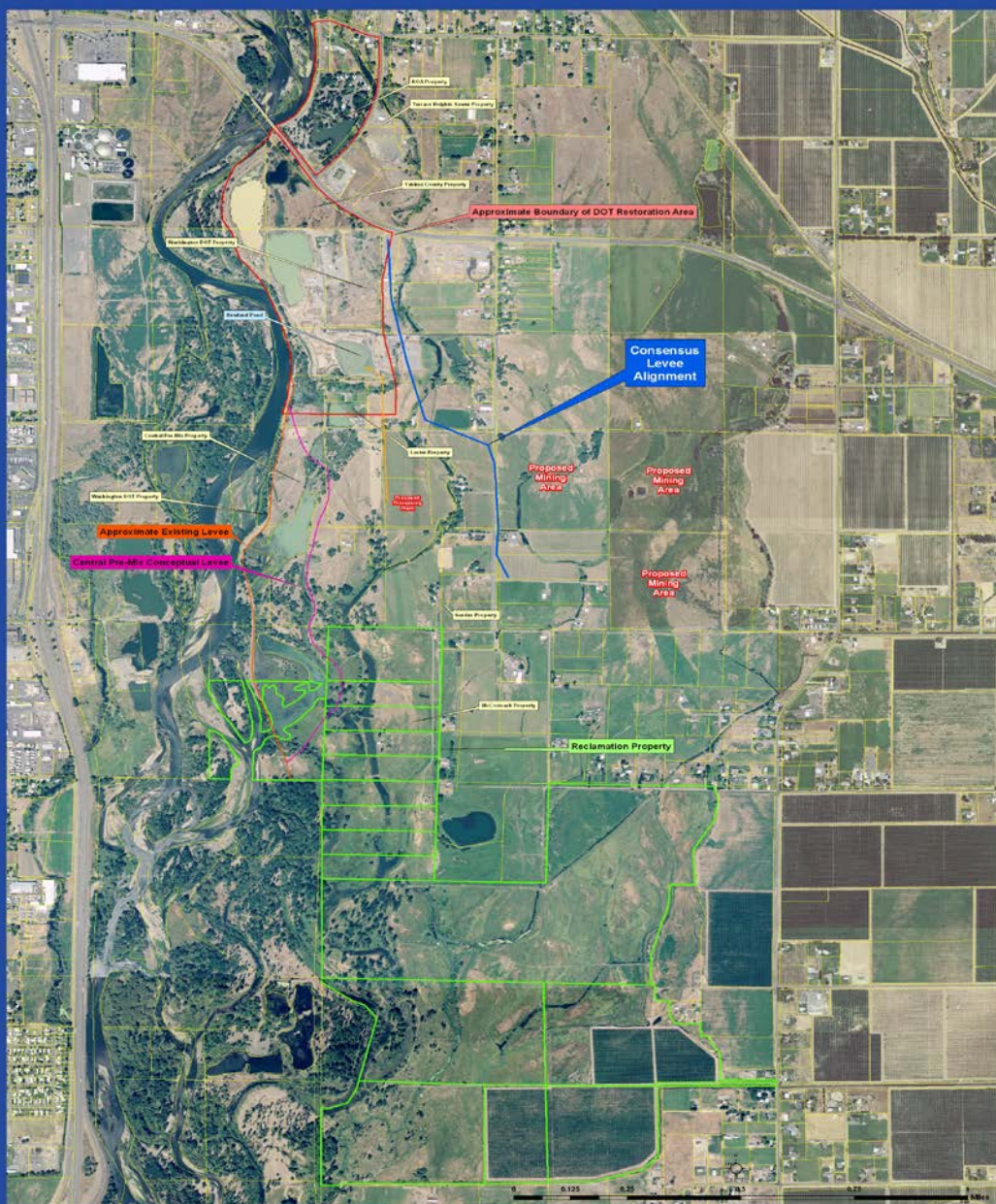
- High Value Habitat Diversity and Food Source Area
- YRBWEP Acquired Backwater Habitat is Improving
- Yakima County's Levee Setback Progressing
- WashDOT's Highway 24 Bridge Wide-Span Replacement Project has been Completed



RECLAMATION



RECLAMATION



This reference graphic is related to information contained on the following website: [http://www.reclamation.gov](#). It is subject to public release under the provisions of the public information laws of the United States. It is the property of the United States Government and its use is restricted to the agency of the Government. It is not to be retransmitted, copied, or sold for profit. It is not to be used for advertising or promotional purposes. It is not to be used for any other purpose without the written approval of the agency of the Government. It is the property of the United States Government and its use is restricted to the agency of the Government. It is not to be retransmitted, copied, or sold for profit. It is not to be used for advertising or promotional purposes. It is not to be used for any other purpose without the written approval of the agency of the Government.

**Selah - Union Gap Reach
Restoration Reference Graphic**

RECLAMATION
Managing Water in the West

YAKIMA RIVER BASIN

- “The Greatest Thing In This World Is Not So Much Where We Are, But In What Direction We Are Moving”

- O. Wendell Homes

RECLAMATION