

Yakima Tributary Access & Habitat Program



*Presented by Anna Lael
Kittitas County Conservation District
June 2005*

What is the Yakima Tributary Access & Habitat Program?

Created as a result of multiple requests from private landowners and water users for assistance to address fish screen and fish passage issues in the Upper Yakima River tributaries

“Y-TAP”

Who is YTAHP?

- *Kittitas County Conservation District*
- *Kittitas County Water Purveyors*
- *North Yakima Conservation District*
- *Ahtanum Irrigation District*
- *Department of Fish & Wildlife*
- *South Central Resource Conservation & Development*
- *Yakama Nation*

How is YTAHP Funded?

- *Bonneville Power Administration (~\$3.9 million since FY02)*
- *Salmon Recovery Funding Board (six grants totaling \$870,000 since 2002)*
- *Conservation Commission Professional Engineering Services Grant (~\$20,000 per year since 2003)*
- *Conveyance Infrastructure funds from the State and Local Improvement Account – Referendum 38 (two grants for \$360,200)*
- *Landowner contributions (cash and in-kind)*

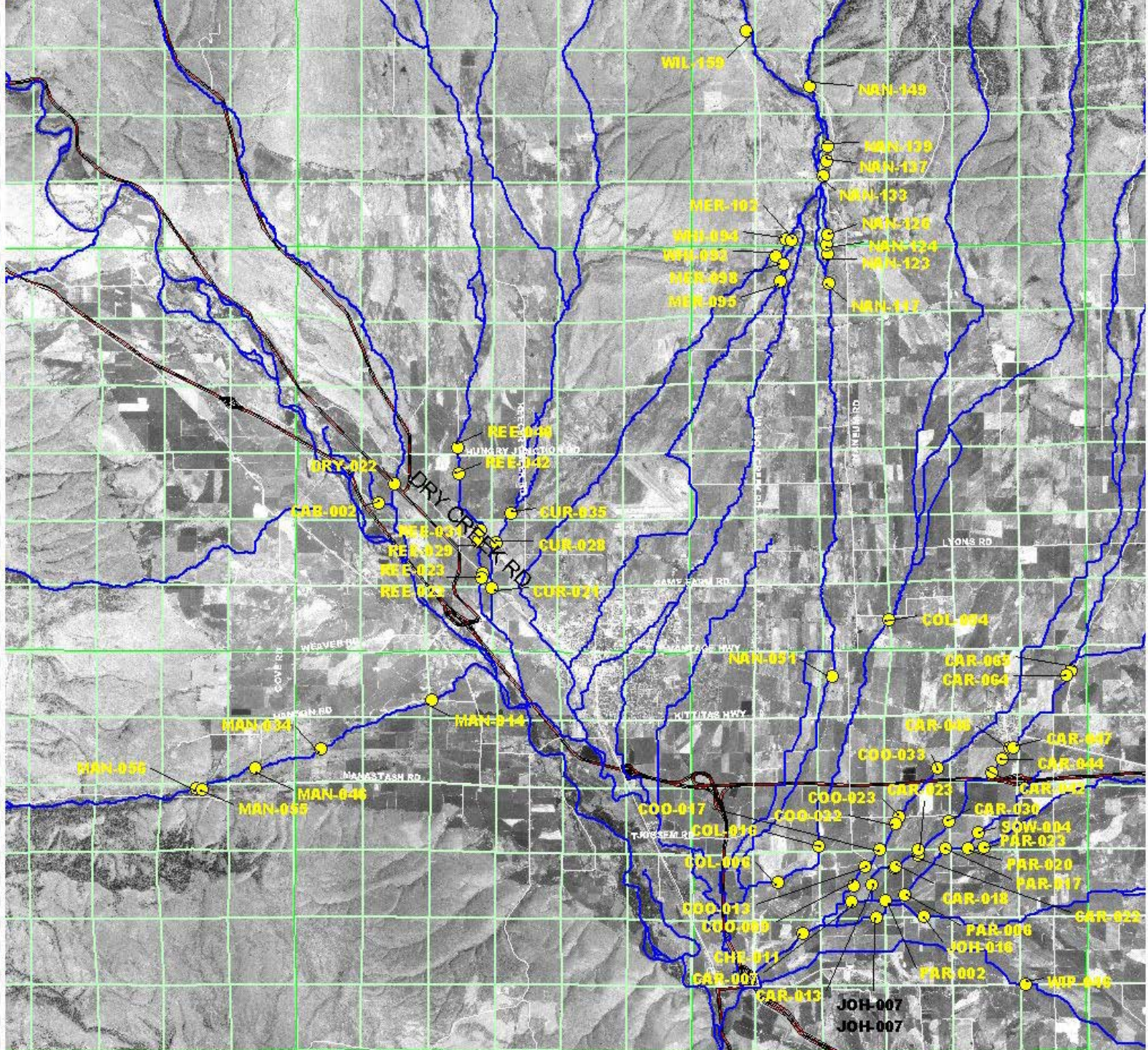
YTAHP in Kittitas County

Important tool for KCCCD!

- 🌀 *Voluntary Incentive Based Programs*
- 🌀 *Provides support for technical and financial assistance to private landowners*
- 🌀 *Holistic approach to landowner assistance*
- 🌀 *Complements other Available Programs*
(e.g. Water Meter, Irrigation Efficiencies, Environmental Quality Incentives Program)

YTAHP Stream Assessments

- *Build on current data in order to assess level of need*
- *Utilized SSHEAR assessment protocol*
 - *Trained by WDFW Staff*
- *Basis for priority determinations*
- *Provide a better understanding of each tributary*





10/15/2004

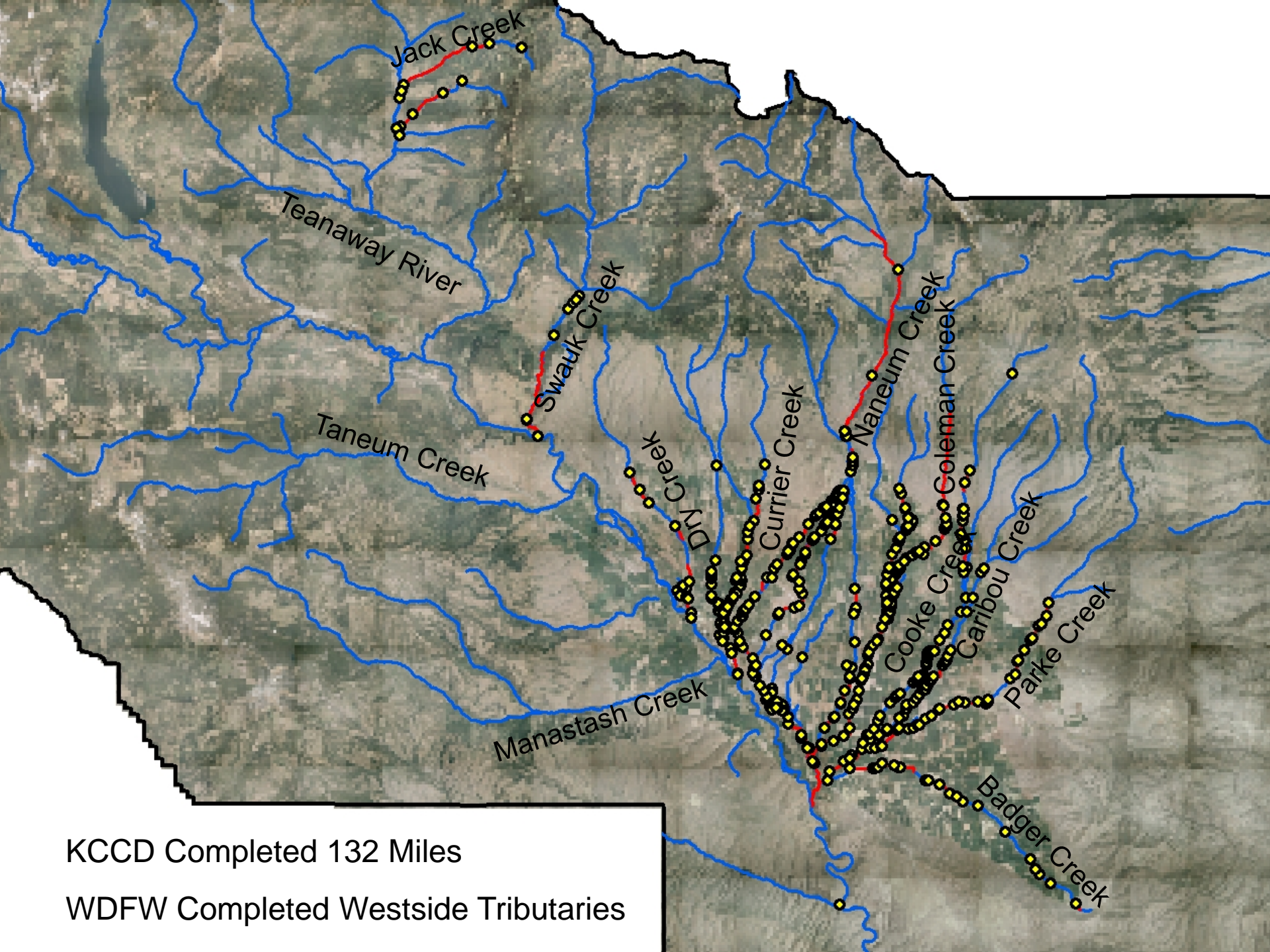


12/10/2000



04/09/2004





KCCD Completed 132 Miles

WDFW Completed Westside Tributaries

Early Action Projects

- *Dry Creek and Cabin Creek*
- *Coleman Creek*
- *Wilson Creek*



07/07/2004

Dry Creek and Cabin Creek Project

- *Barrier Removal*
- *Point of Diversion Consolidation*
- *Conversion from Flood to Sprinkler Irrigation*

Funded By:

YTAHP

SRF Board Grant

EQIP



One Landowner

Coleman Creek

- *Barrier Removal*
- *Barrier installation at terminus of canal*
- *Fish Screen*
- *In-stream Habitat Improvement*
- *Stream bank stabilization and planting*

Funded by :

YTAHP

SRF Board



Three Landowners and Bull Canal

Lower Wilson Creek

- *Two Barriers removed*
- *One pump station install with approved screen*
- *Rill and Flood irrigation converted to 3 center pivots*
- *Riparian Plantings*
- *Livestock Fencing*
- *Livestock Crossings*

Funded by:

Irrigation Efficiencies

EQIP

SRF Board



Two Landowners

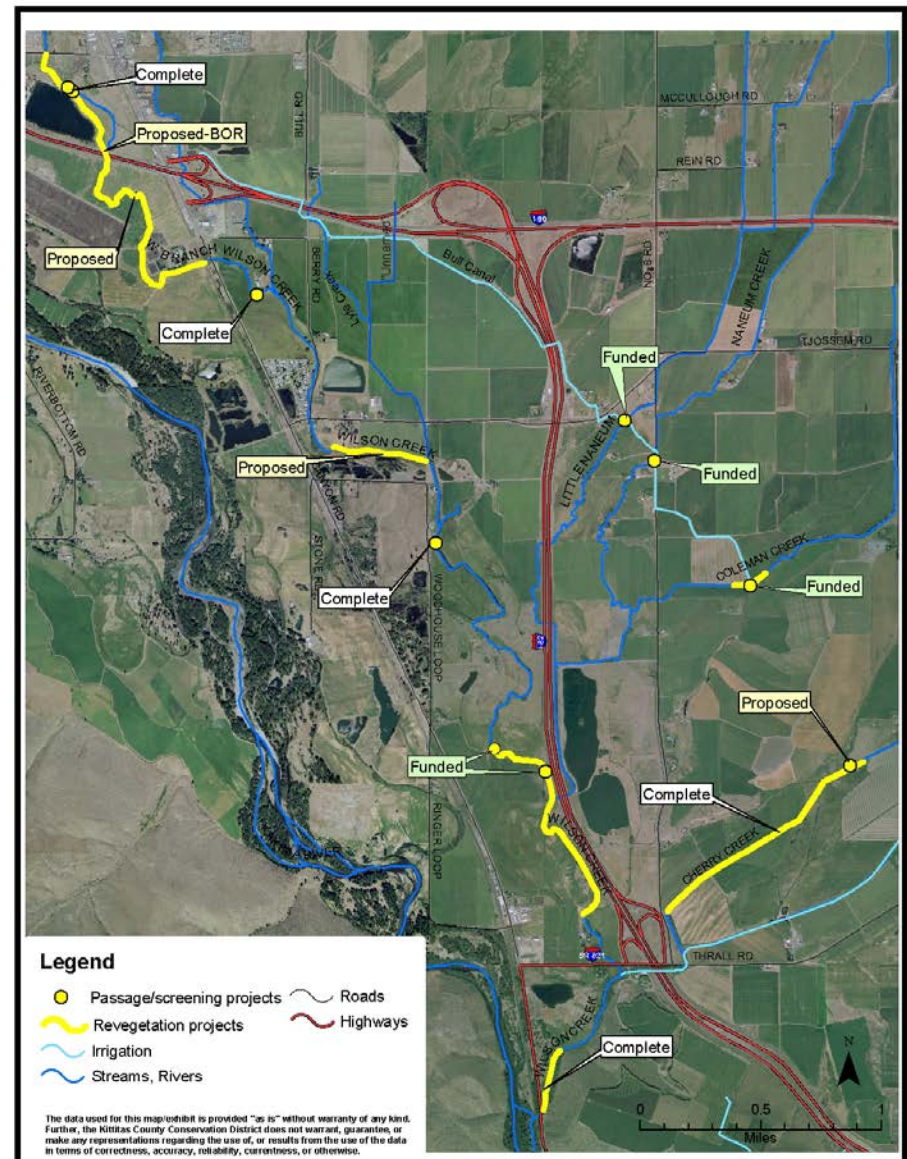
Kittitas County Conservation District

Yakama Nation

Natural Resources Conservation Service

Tributary Teams & Priority Setting

- *Preliminary Priority Designations*
- *Tributary Teams*
 - *Start with landowners and water users*
 - *Use Stream Assessment Data*
 - *Share Information about any and all issues (ESA, Clean Water Act, etc.) and funding sources.*
 - *Create a plan. . . implement the plan*



Current or Pending Projects

- *Fogarty Ditch/Sorenson Creek (Diversions)*
- *Lower Reecer Creek (Diversions)*
- *Lower Currier Creek (Diversions)*
- *Lower Wilson Creek*
 - *Planting*
 - *In-stream habitat*
- *Cherry Creek Diversion*
- *Caribou Creek Diversions*
- *Lyle Creek Diversion*
- *Swauk Creek Pumps*
- *Jack Creek Culvert*
- *Indian Creek Culvert*



YTAHP Successes

- *Contract with CWU for cultural resource evaluation and monitoring*
- *WDFW Assistance with Permit Process*
- *RC&D Administrative Assistance*
- *Matching project funds (especially Irrigation Efficiencies and EQIP)*
- *Cooperative relationships with groups and agencies*

YTAHP Challenges

- *Water Rights*
- *Complex Irrigation System/Creek Interactions*
- *Coordinating with multiple agencies, groups and individuals*
- *Juggling multiple projects, funding sources*
- *Finding Adequate Funding for Projects*

06/29/2004

Visit KCCD's Website for More Information

www.kccd.net

Anna Lael, District Manager

925-8585 ext. 4