



MOUNT HOOD  
ENVIRONMENTAL

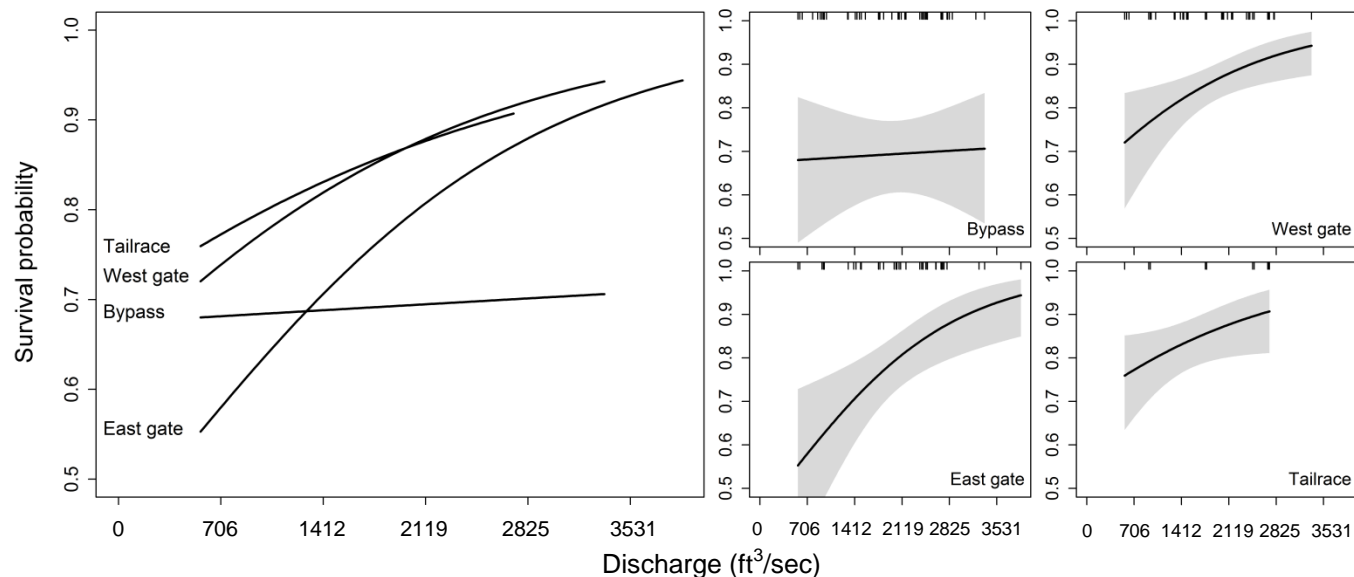
# Survival of Juvenile Chinook and Coho Salmon in the Roza Dam Fish Bypass and in Downstream Reaches, 2016

---

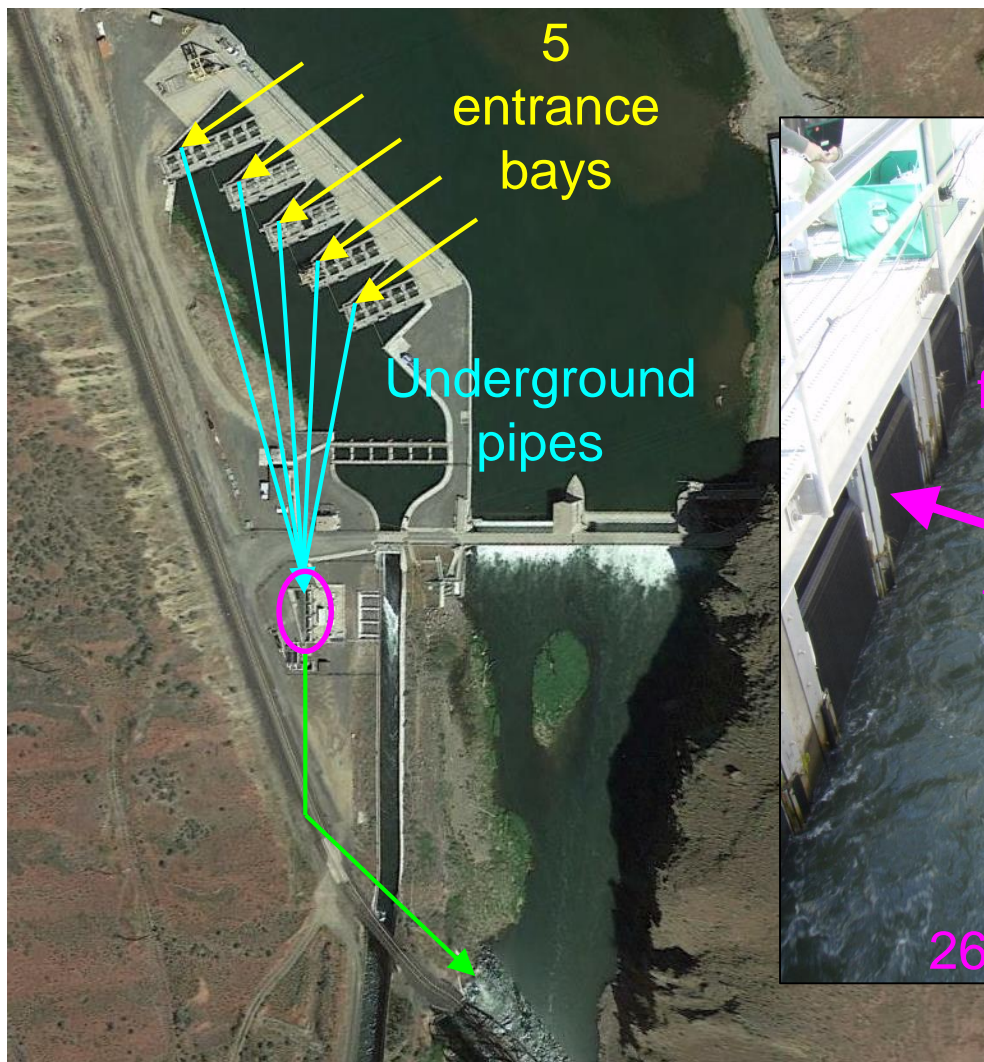
Tobias Kock, Russell Perry, Joel Hubble, and Ian Courter

# Passage Survival at Roza Dam

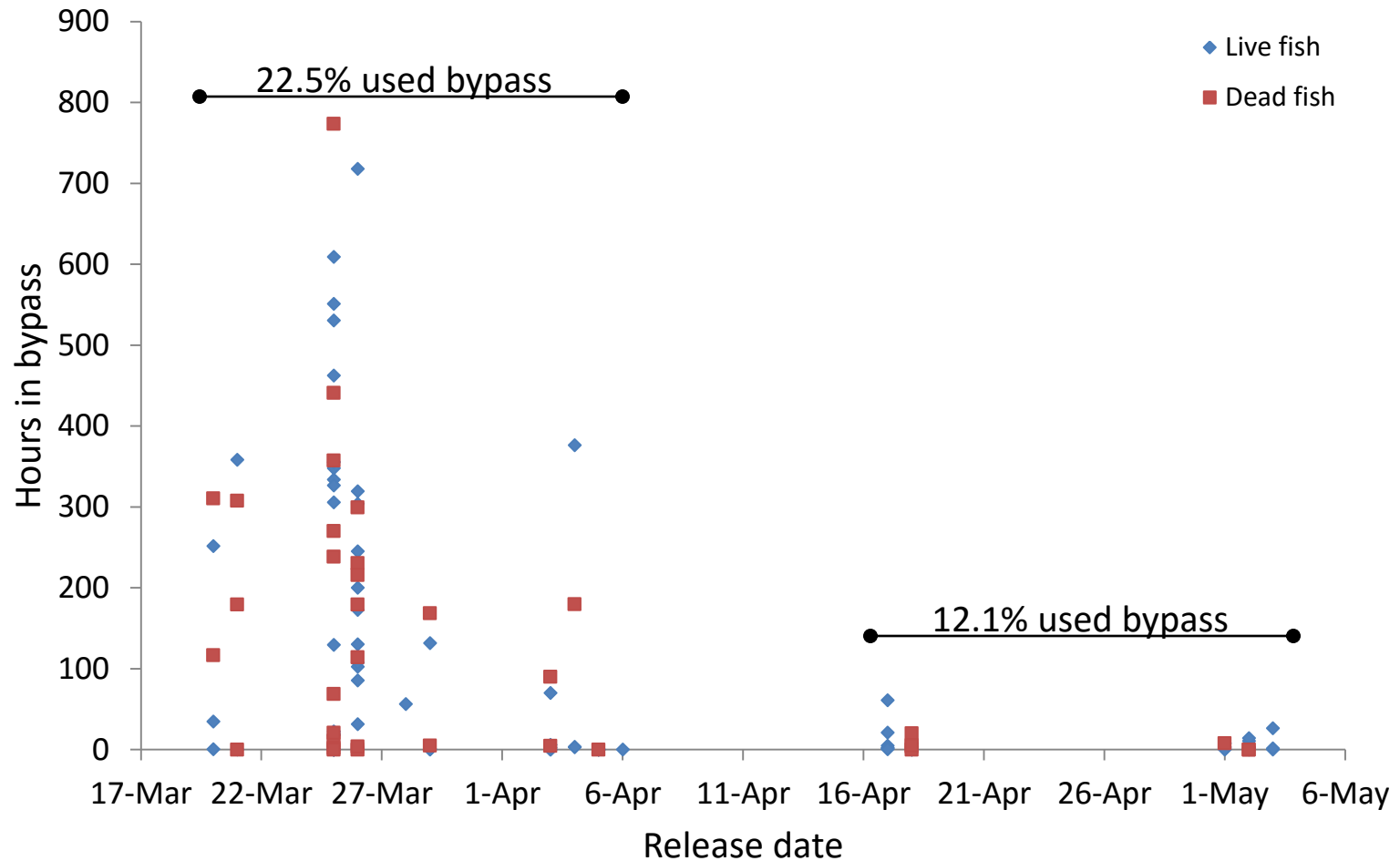
- Survival studies conducted during 2012-2014
- Chinook salmon
  - $n = 149$  in 2012
  - $n = 226$  in 2013
  - $n = 520$  in 2014
- Route-specific passage survival estimates<sup>1</sup>



# Roza Dam Fish Bypass

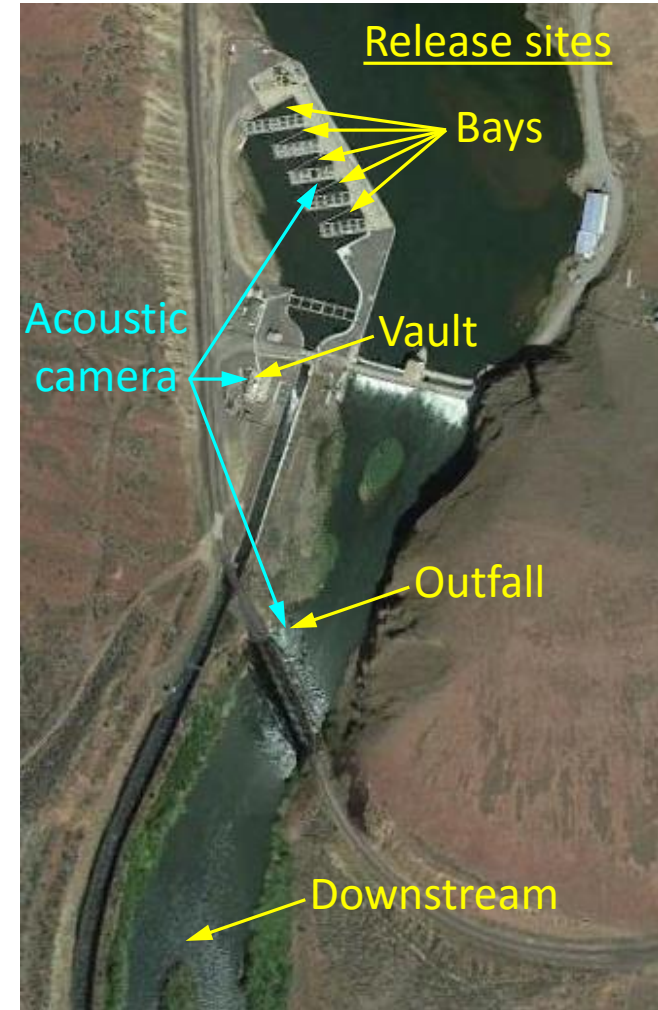


# Delay in the Fish Bypass

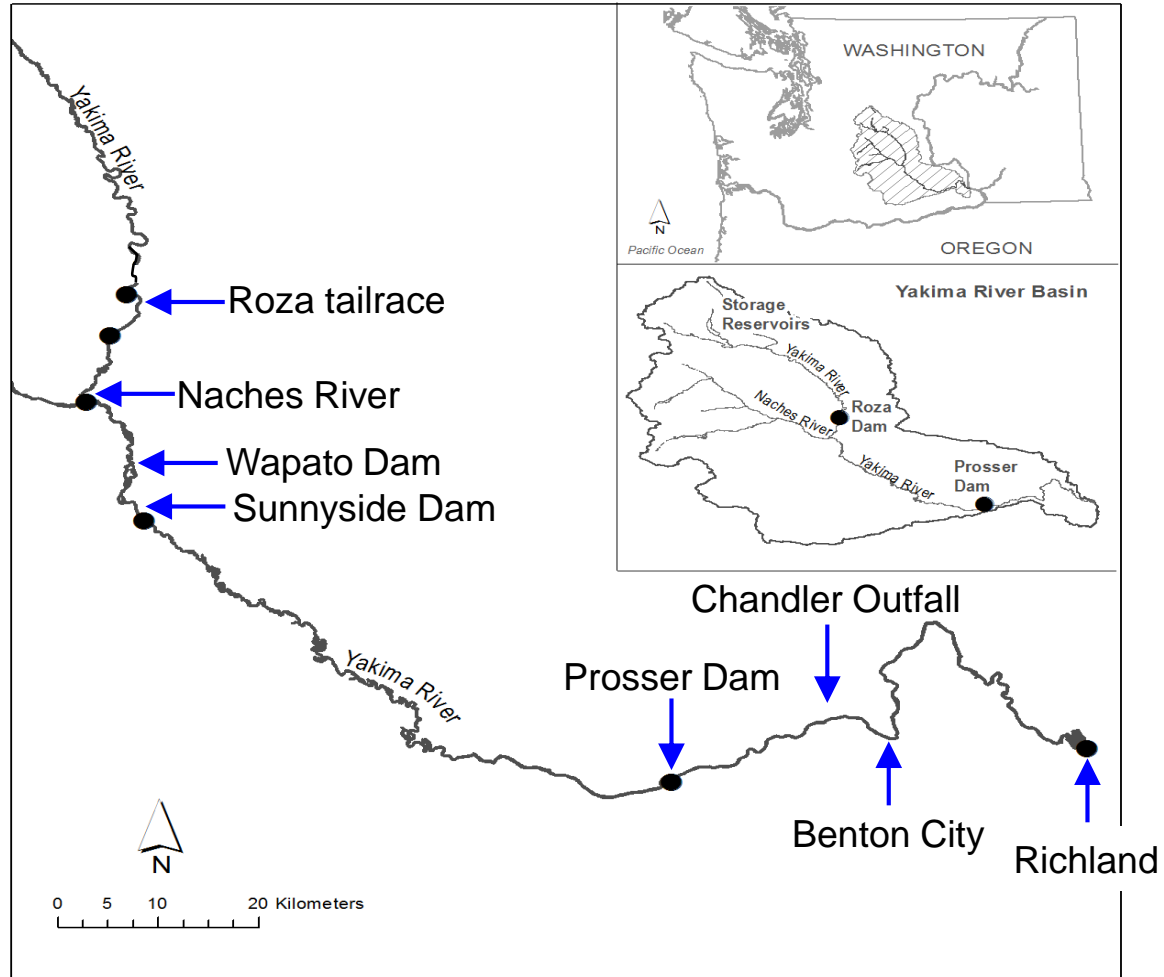


# 2016 Study Design

- Study period
  - ~~late March~~ to early May  
mid April
- Acoustic camera
- Acoustic telemetry
  - Chinook salmon ( ~~$n = 800$~~ )
  - 4 release sites  $n = 549$   
+  
Coho salmon  $n = 260$

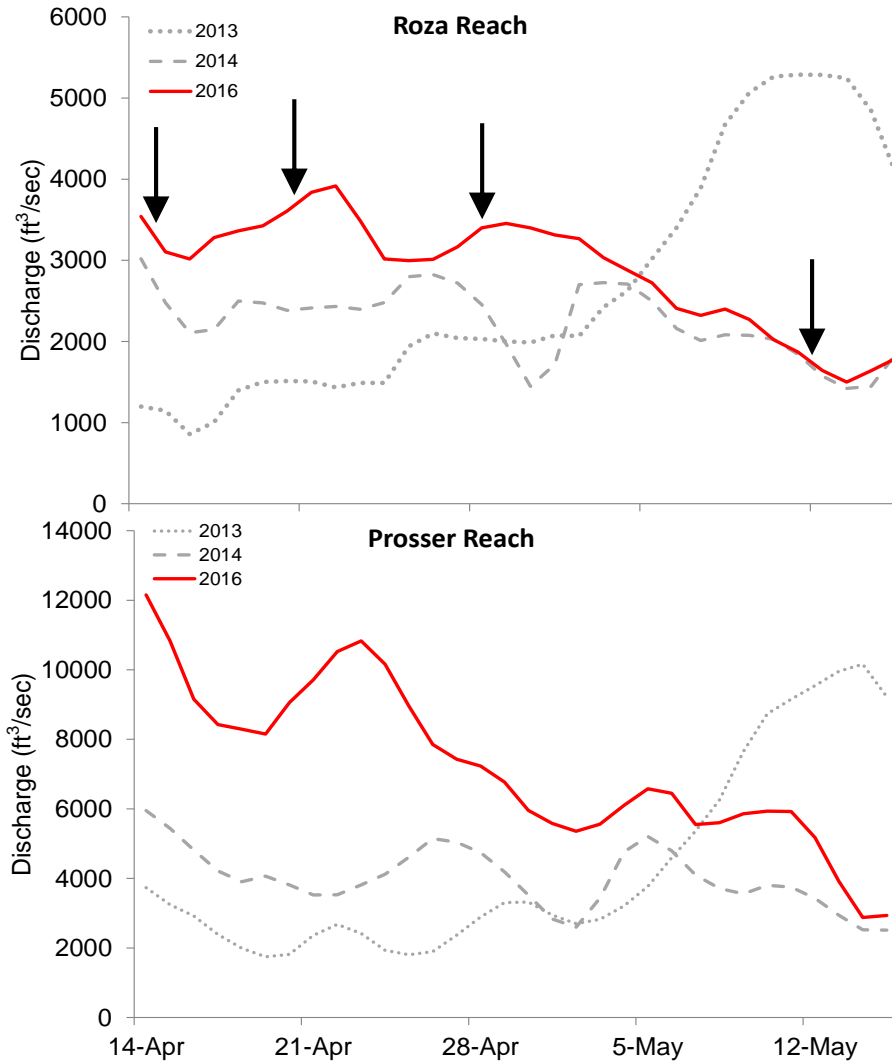


# Study Area



# Flow Data

↓ = fish releases



# Entrance Bay Footage

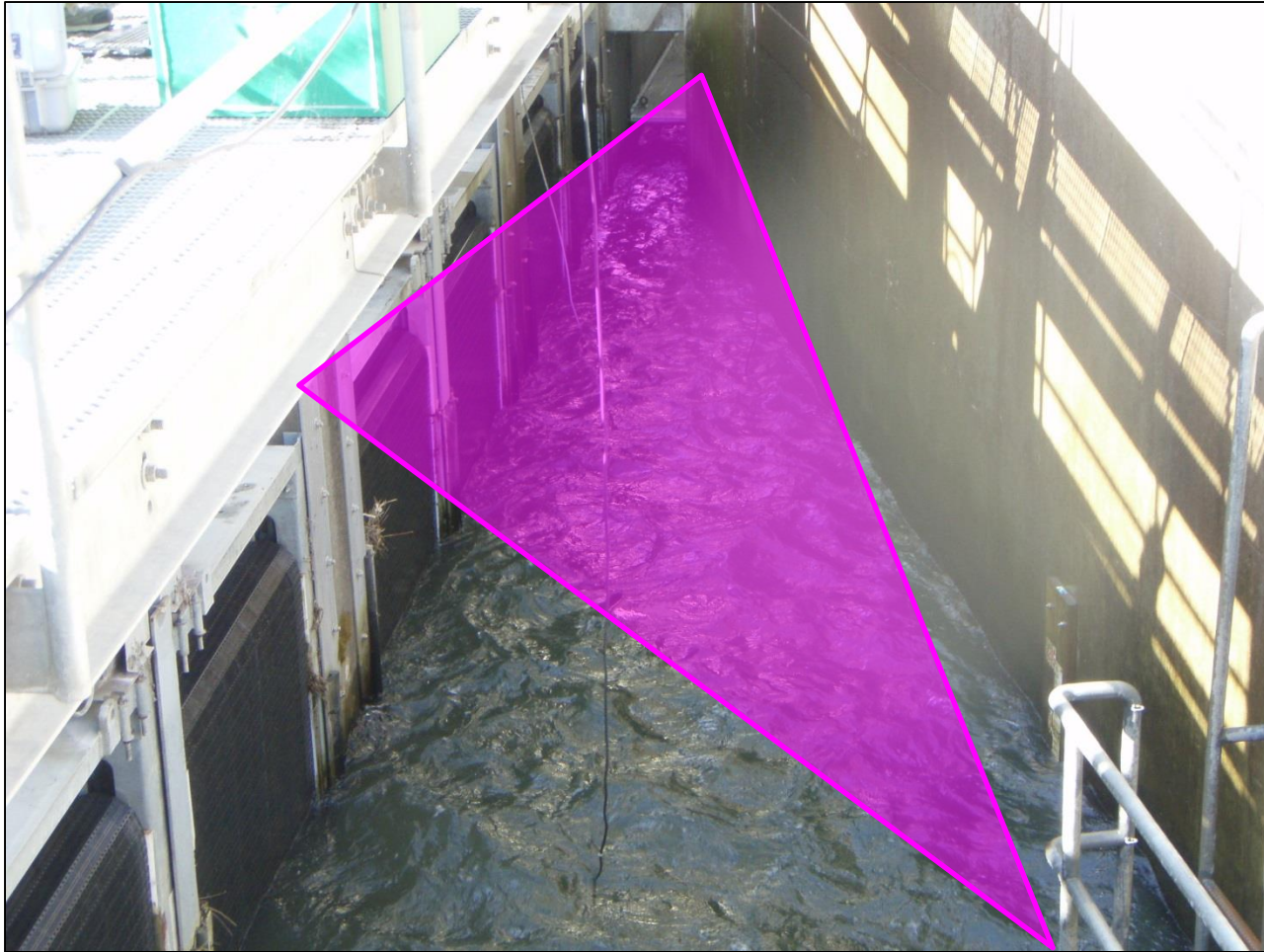
---





# Vault Footage

---

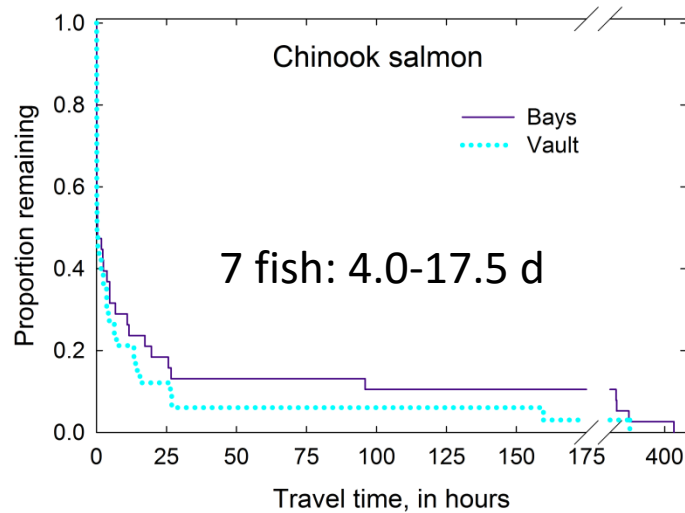


# Outfall Footage

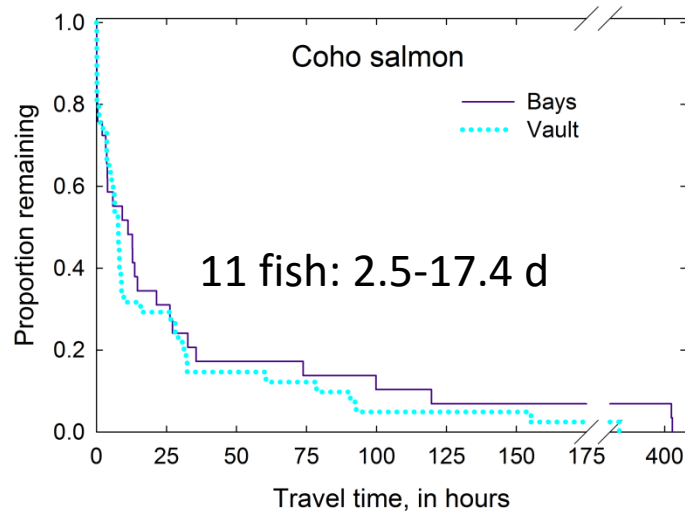
---



# Delay in the Fish Bypass

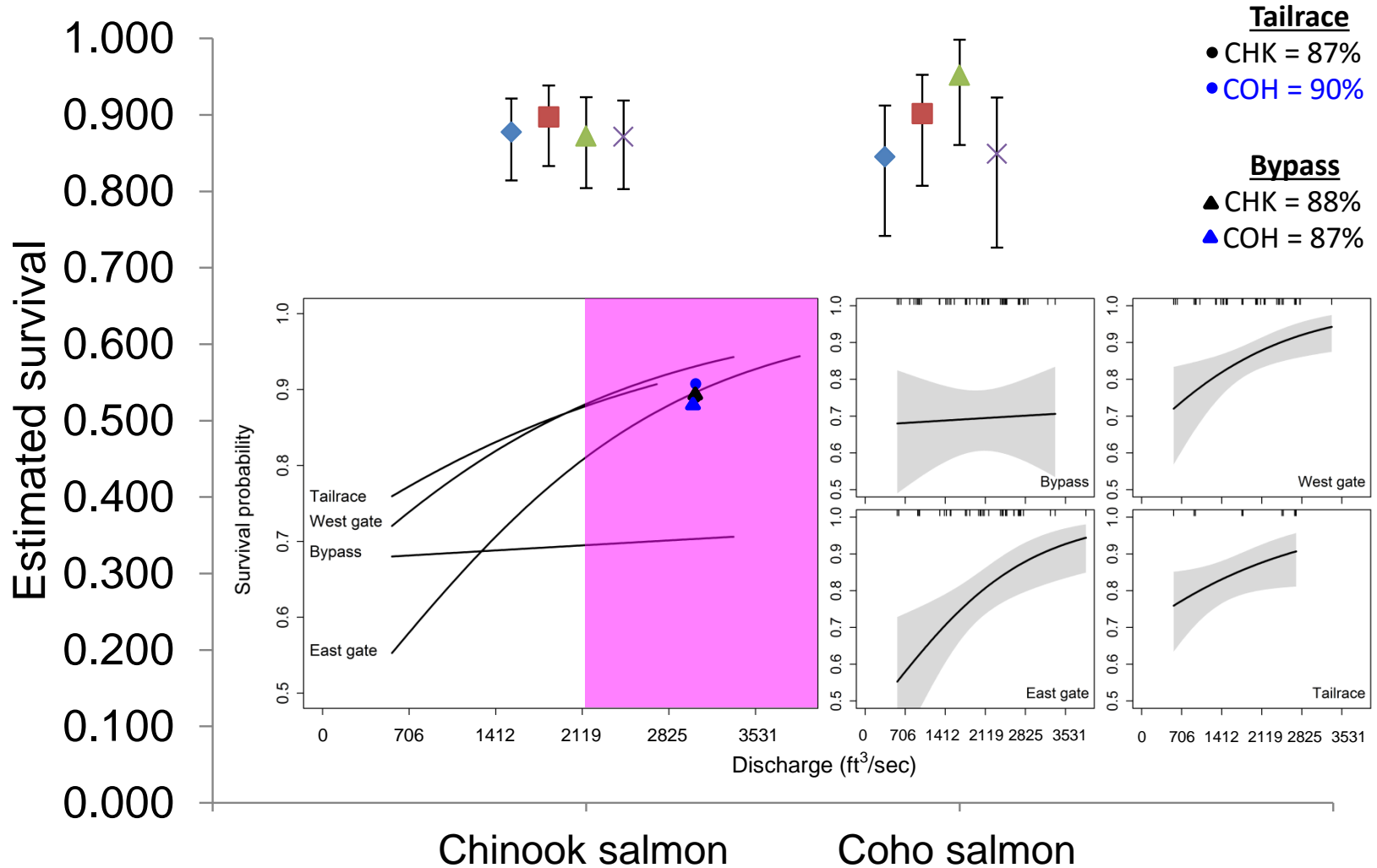


Percentile	Release site	
	Bays	Vault
75 <sup>th</sup>	11.6 h	6.4 h
50 <sup>th</sup>	22.2 min	9.6 min
25 <sup>th</sup>	5.6 min	3.1 min

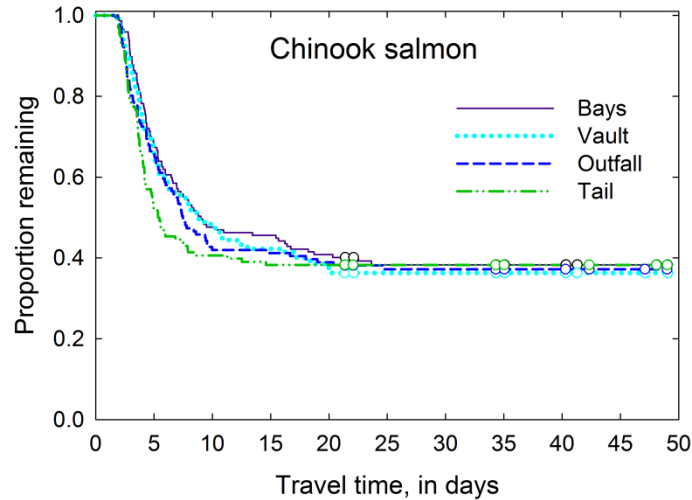


Percentile	Release site	
	Bays	Vault
75 <sup>th</sup>	27.2 h	28.1 h
50 <sup>th</sup>	11.2 h	7.7 h
25 <sup>th</sup>	2.0 h	2.3 h

# Bypass Survival Estimates

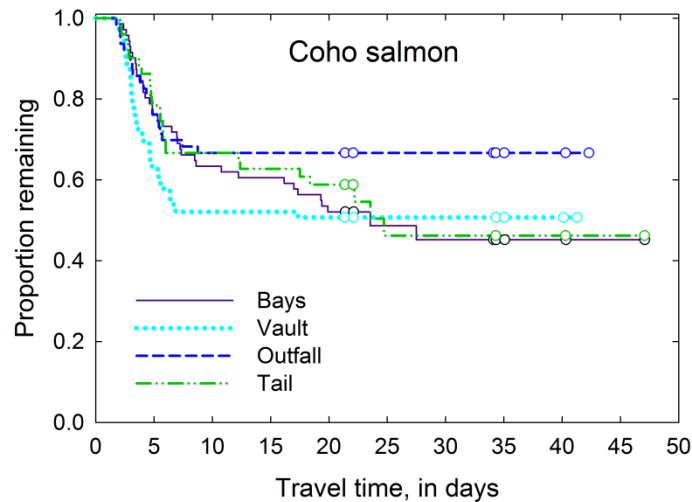


# Travel Times



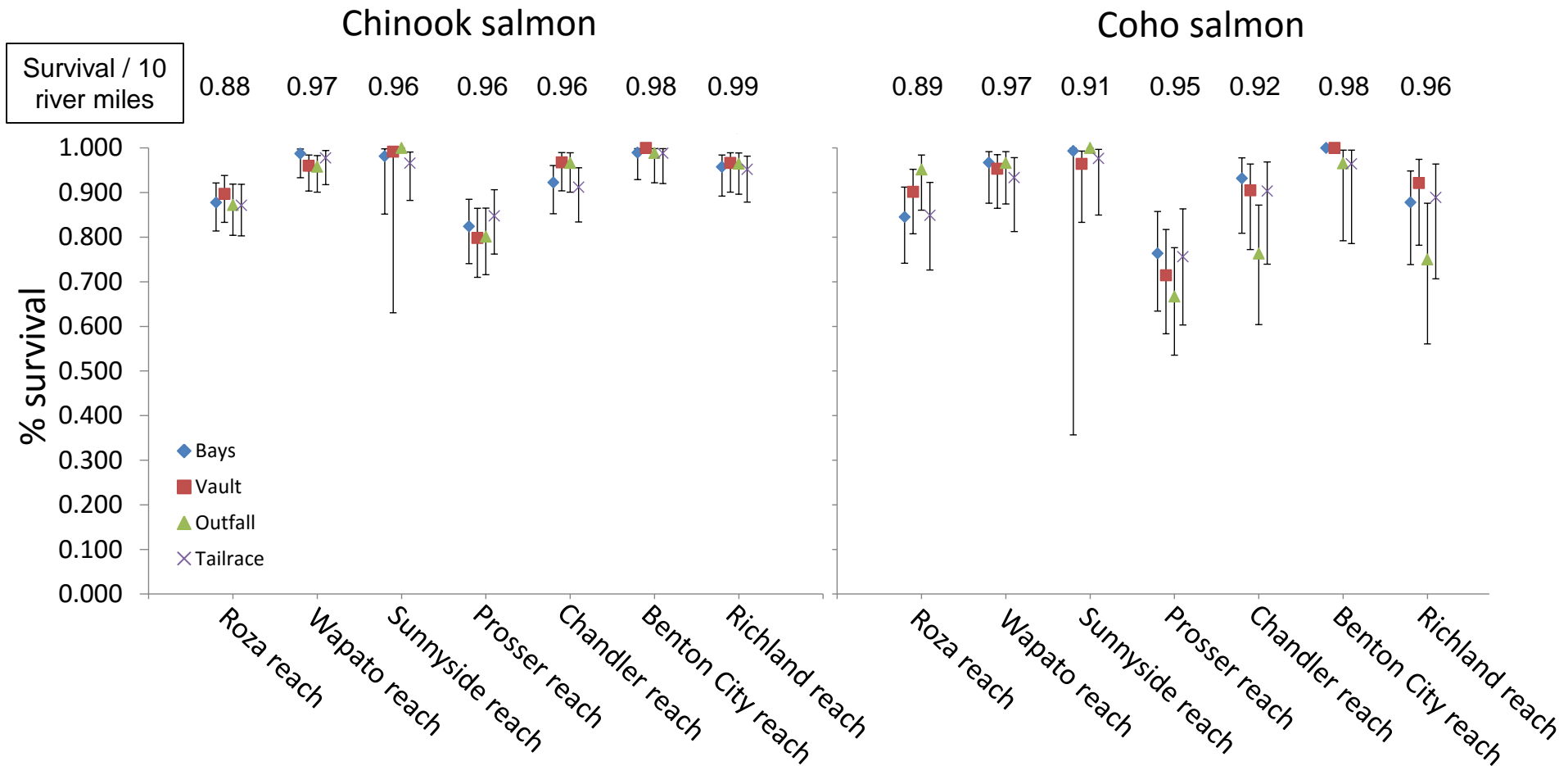
## Roza Dam to Richland

Median = 7.8 d

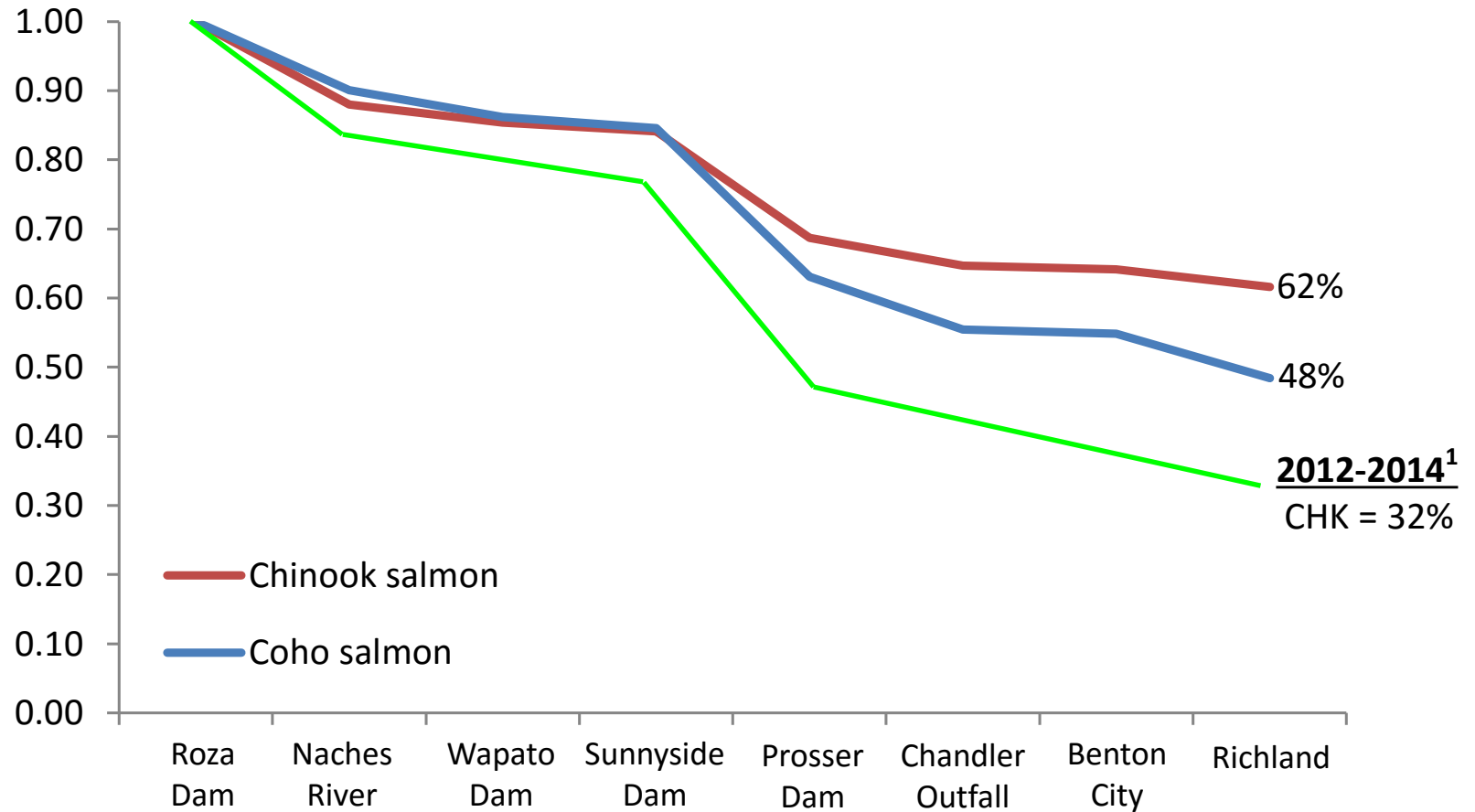


Median = 22.4 d

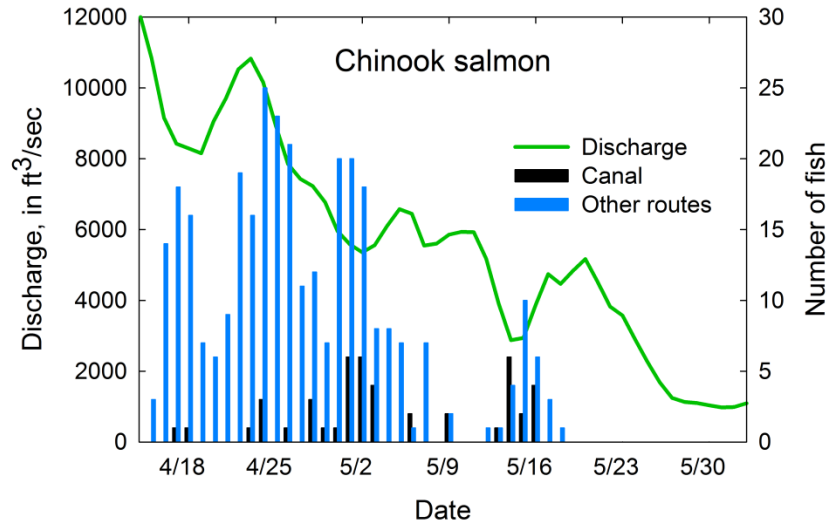
# Reach Survival Estimates



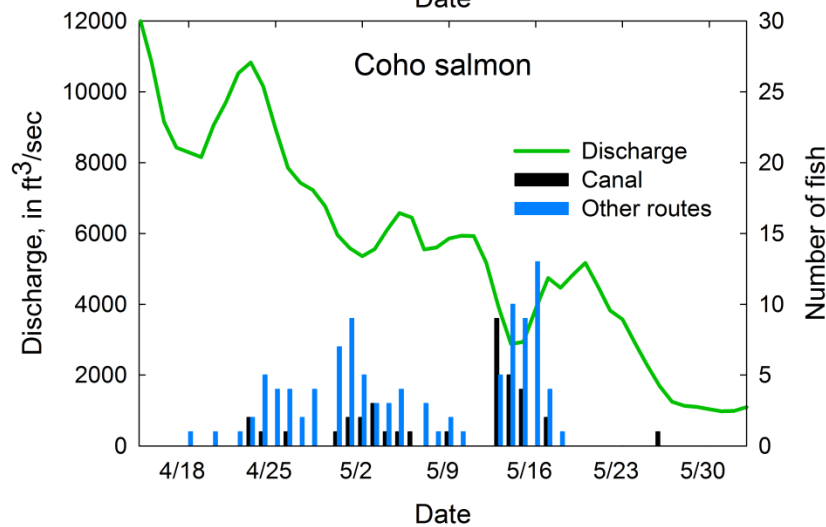
# Cumulative Mortality



# Prosser Dam Passage



12% canal passage



26% canal passage



# Next Steps

---

- Finish data collection
- Roza fish bypass
  - Assess release group differences
  - Merge current and past datasets and re-analyze data
  - Summarize acoustic camera results
- Downstream reaches
  - Conduct “cohort” analysis
    - Include important covariates
  - Merge current and past datasets and re-analyze data
- Acknowledgements
  - Mark Johnston and Roza crew
  - Funding: BOR and Joint Board

