

RECLAMATION

Managing Water in the West

Overview of the Yakima Basin Storage Study

Joel Hubble

Yakima Basin Aquatic Science & Management Conference

June 14, 2007

Ellensburg, WA



U.S. Department of the Interior
Bureau of Reclamation

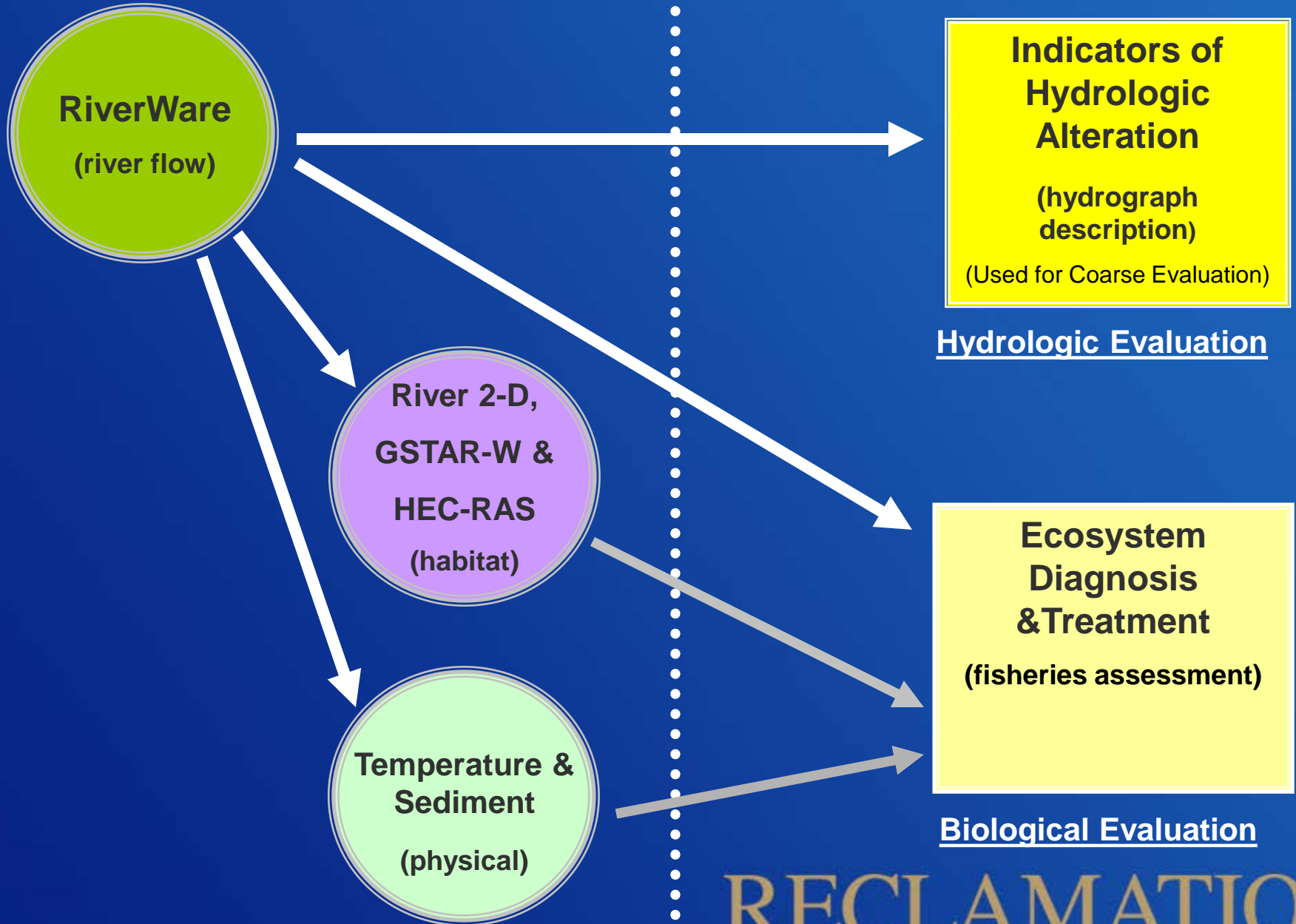
Objective

Examine the feasibility and acceptability of augmenting storage in the Yakima Basin to:

- Benefit instream flow & ecosystem health.
- Firm up irrigation water supply in drought years.
- Provide for future municipal water needs.

Support Models

Assessment Model



RECLAMATION

2-D Floodplains

Easton

Ellensburg

Lower Naches

Gap-to-Gap

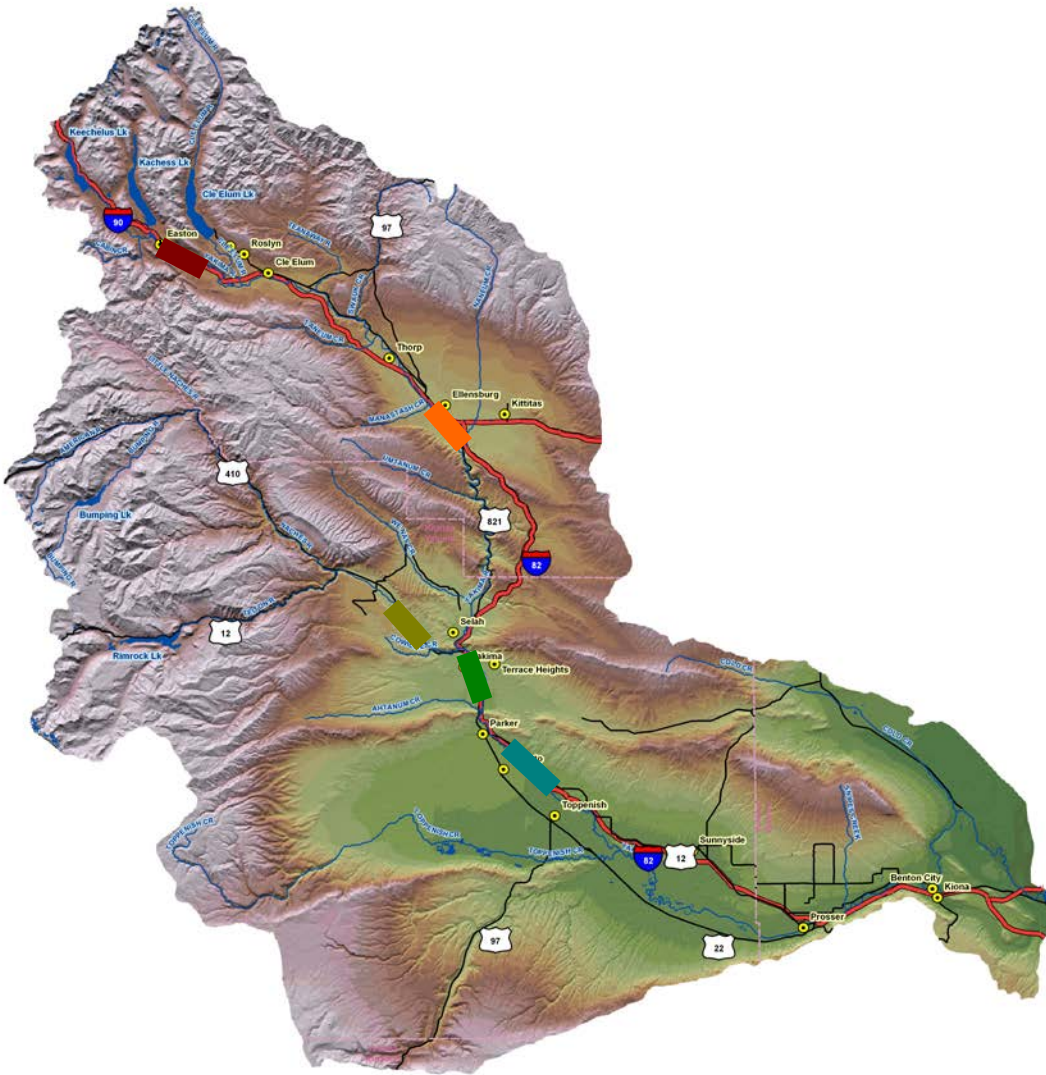
Wapato

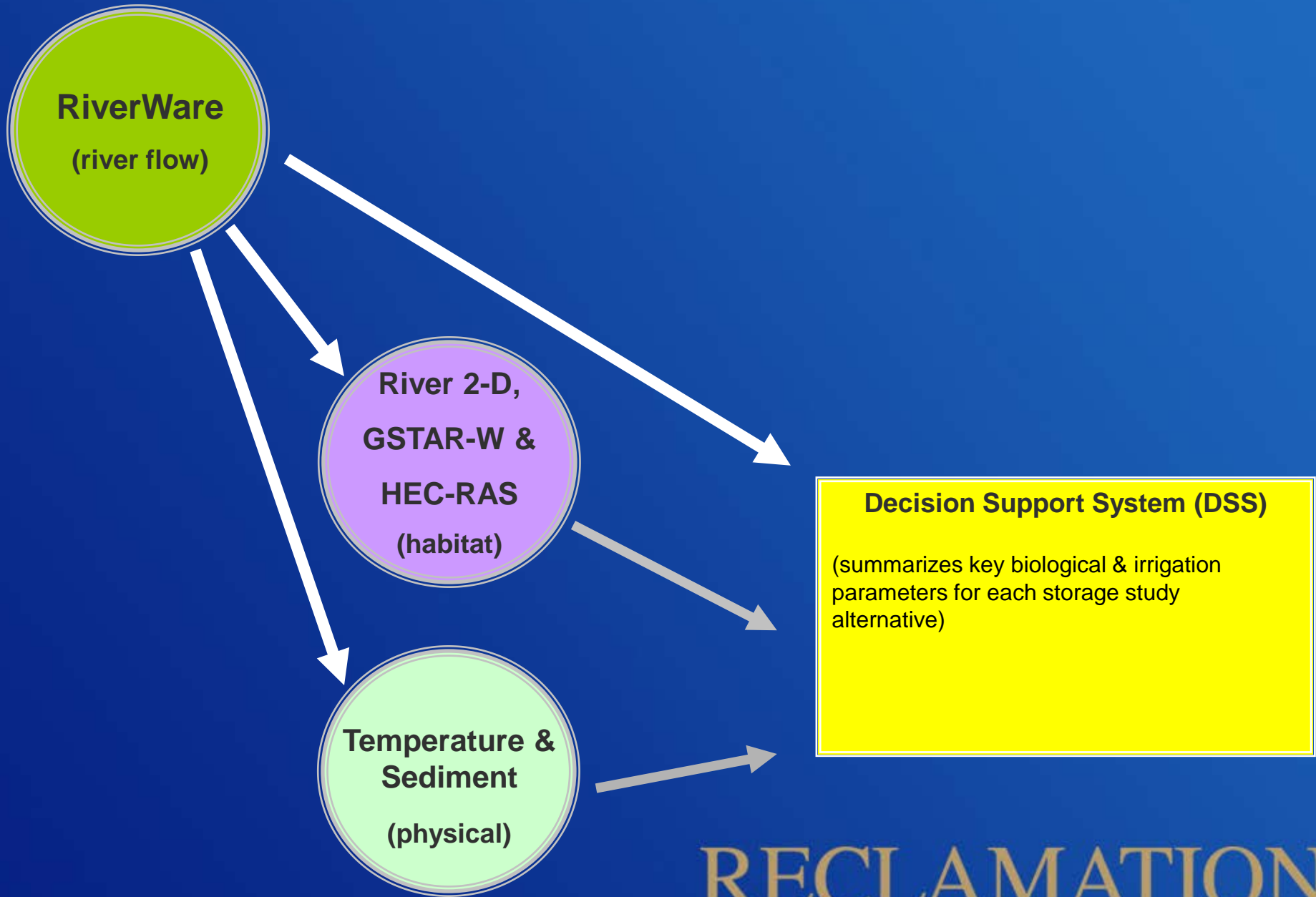
Temperature Model

Roza Dam to Prosser Dam

Sediment Model

1. Town Dam to Wilson Cr
2. Naches R. to approx Benton City Br.
3. Lower Naches





RECLAMATION

Jim Hatten (USGS- Cook Lab)

- Present the 2-D model results for the Wapato reach.

Jeff Thomas (USFWS)

- Present the Decision Support System.