



Yakama Nation

Wildlife Resources Management

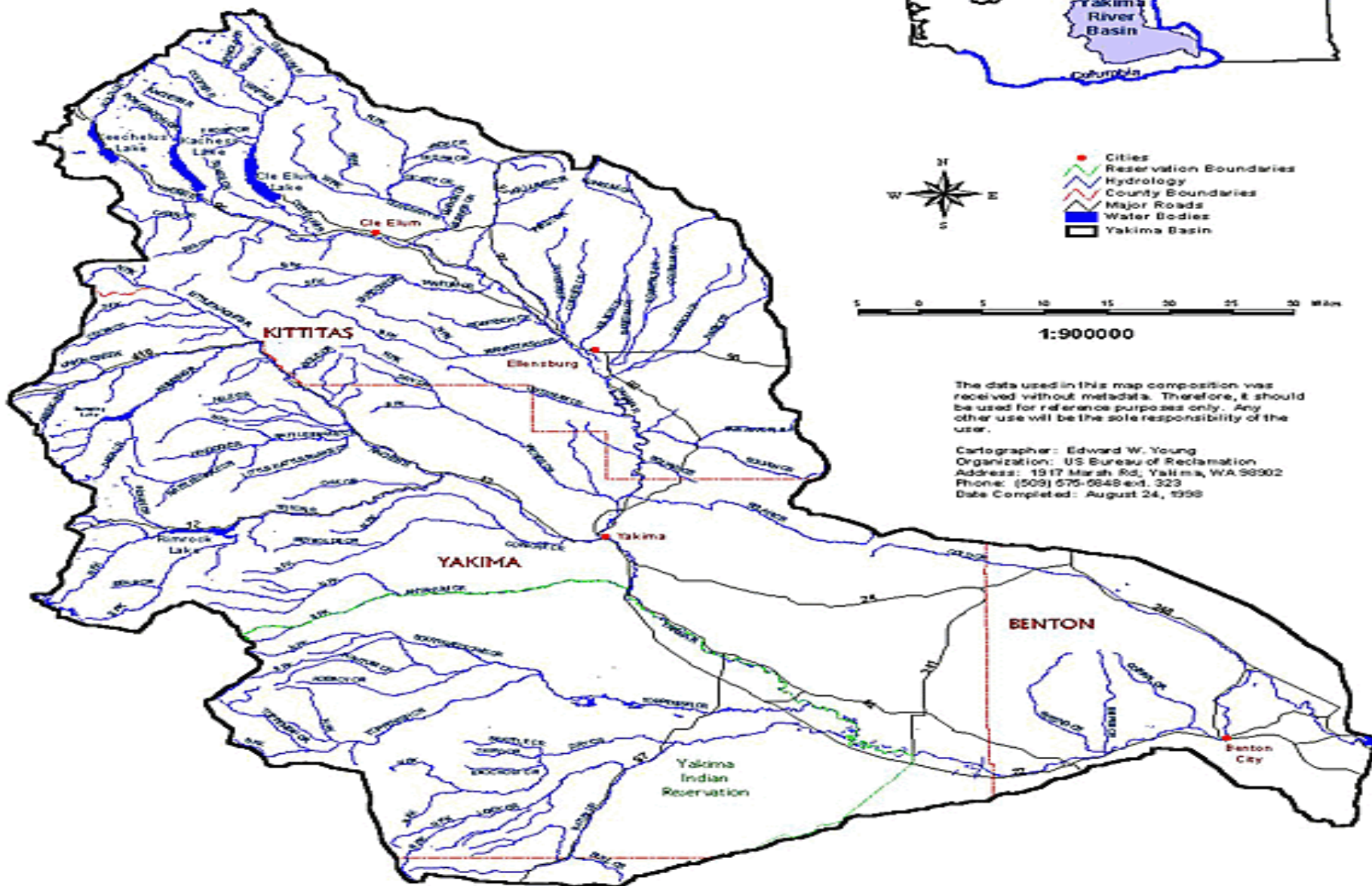


Ring-necked Pheasant -M- (Can) Copyright 1998 - Monte M. Taylor



by Marshall Hiff

Yakima River Basin (General Reference Map)



The data used in this map composition was received without metadata. Therefore, it should be used for reference purposes only. Any other use will be the sole responsibility of the user.

Cartographer: Edward W. Young
 Organization: US Bureau of Reclamation
 Address: 1917 Marsh Rd, Yakima, WA 98902
 Phone: (509) 575-0848 ext. 323
 Date Completed: August 24, 1998





6 3 '99



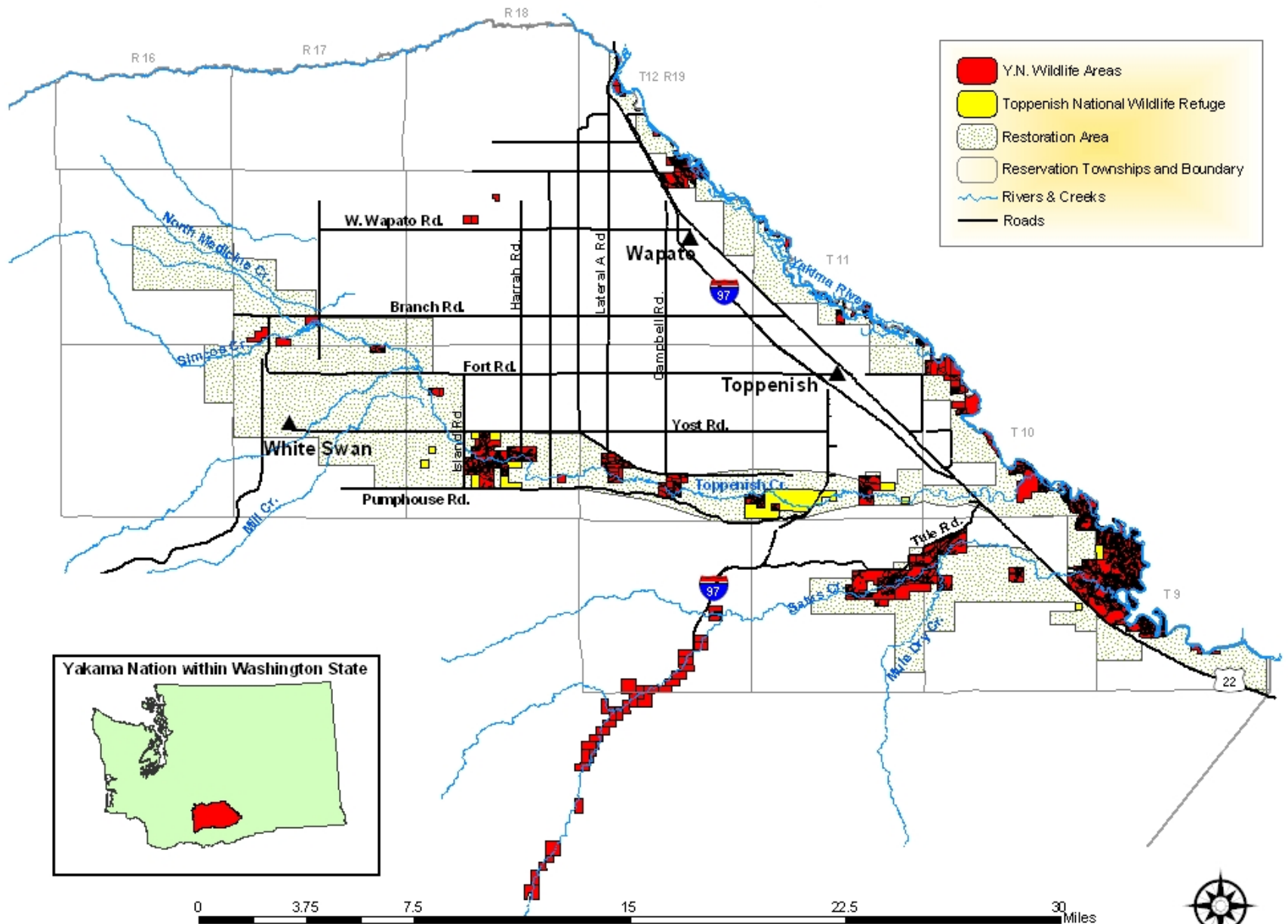




Program Goals

- *Native Habitat Restoration*
- *Anadromous Fish Restoration*
- *Yakama Cultural Resource Protection*
- *Restore Hydrologic Integrity*

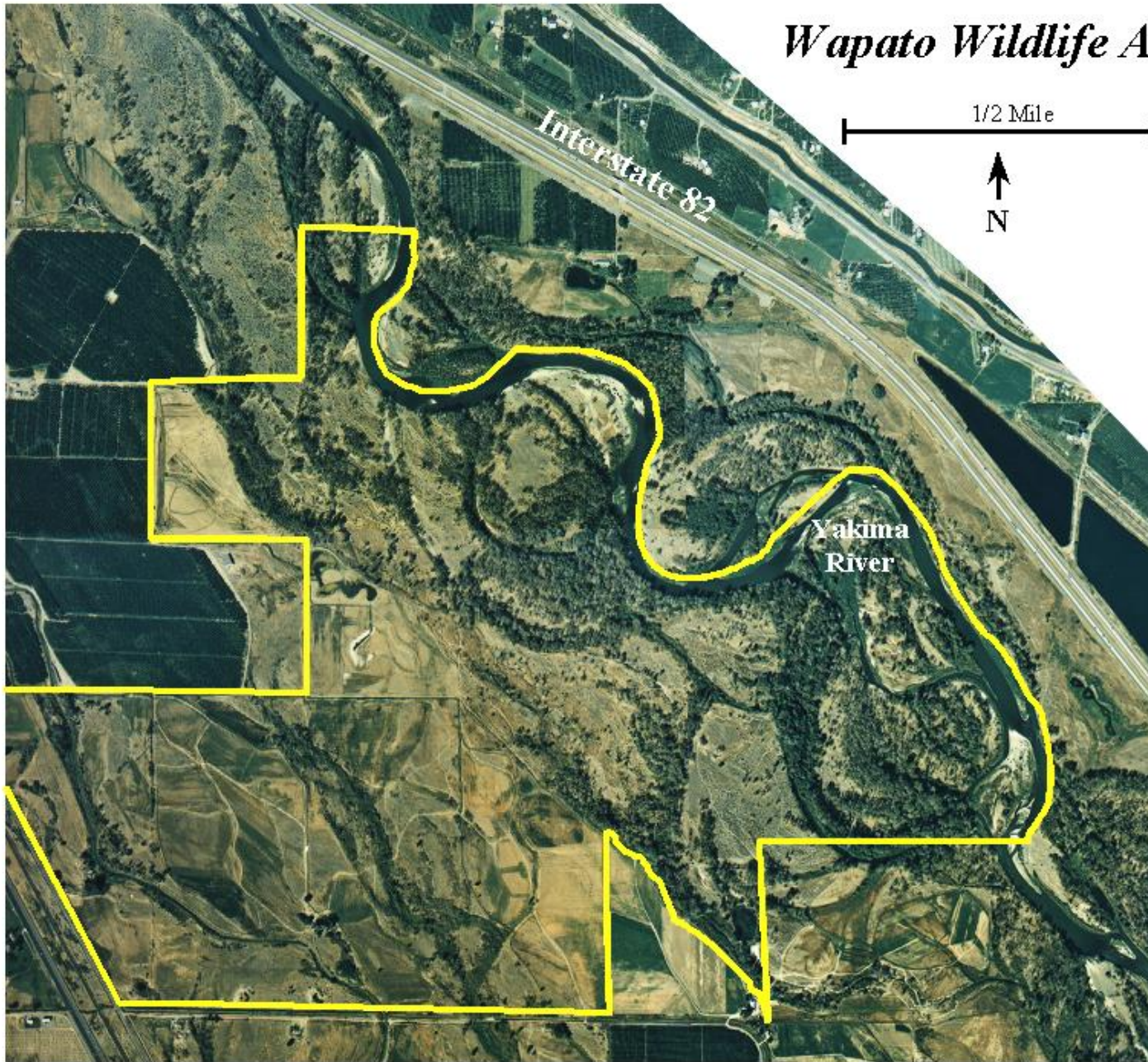
Yakama Nation Wildlife Projects



Wetland and Riparian Habitat Restoration



Wapato Wildlife Area





4.9.2004



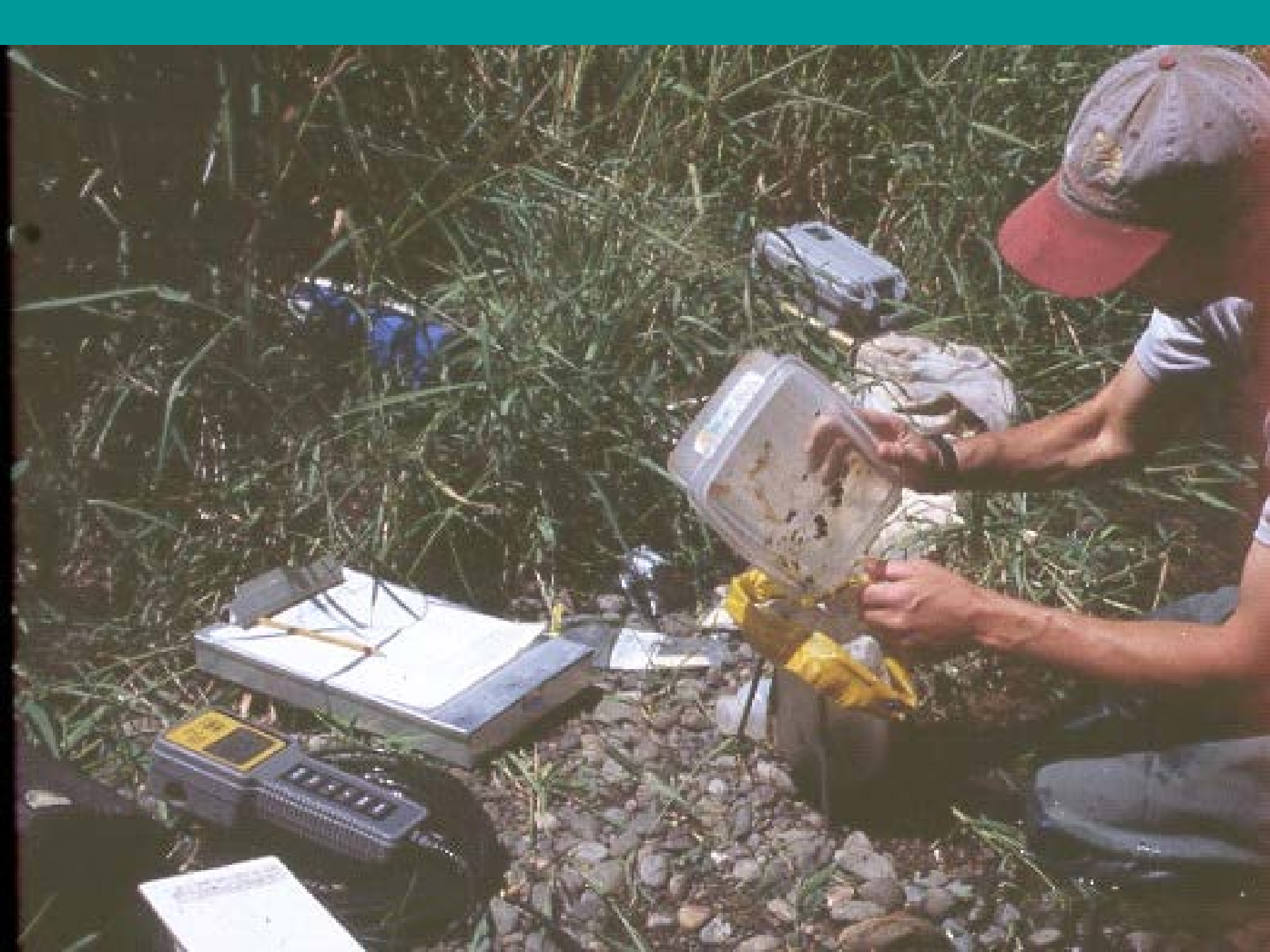
4. 4. 2002







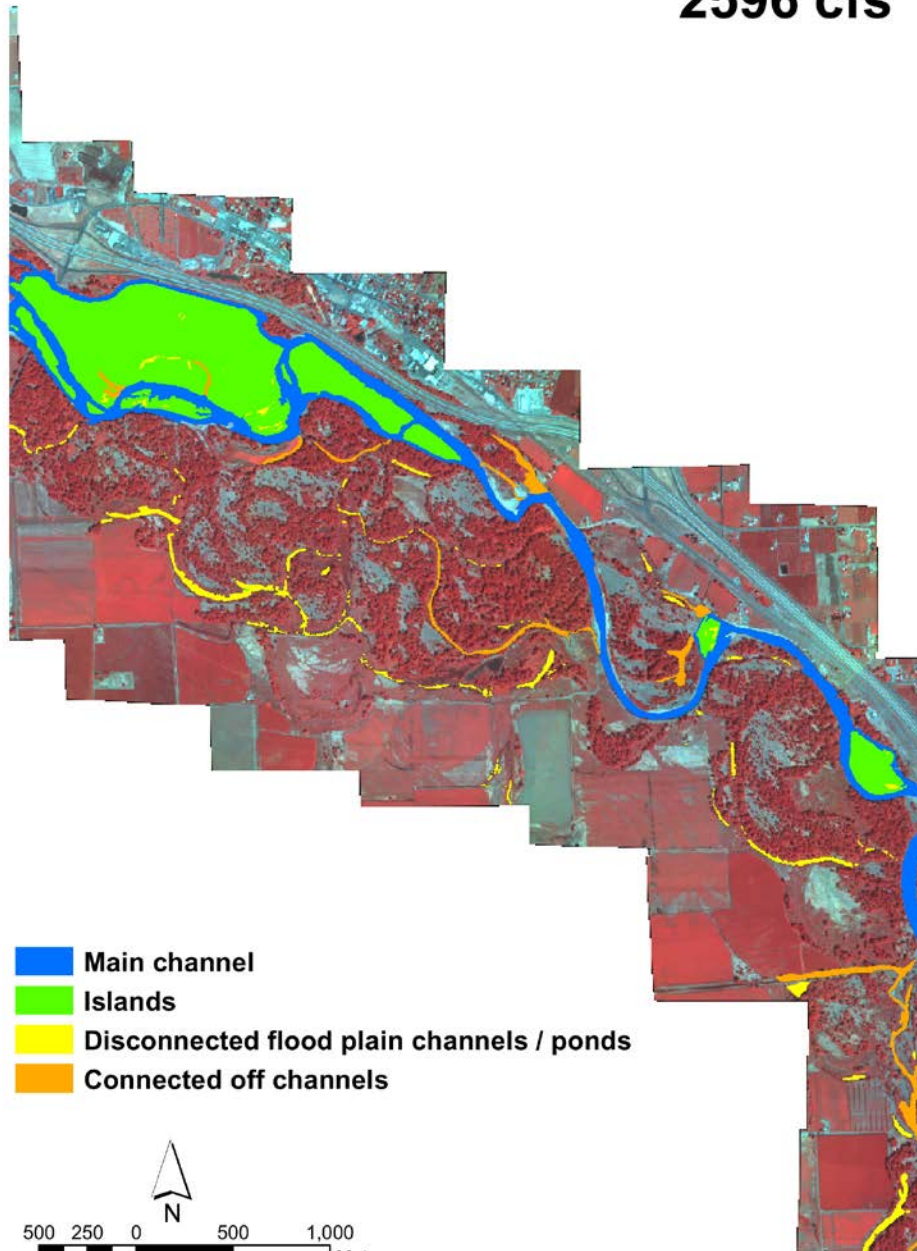
4. 4. 2002



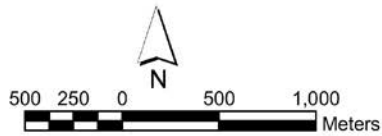


4.4.2002

2596 cfs

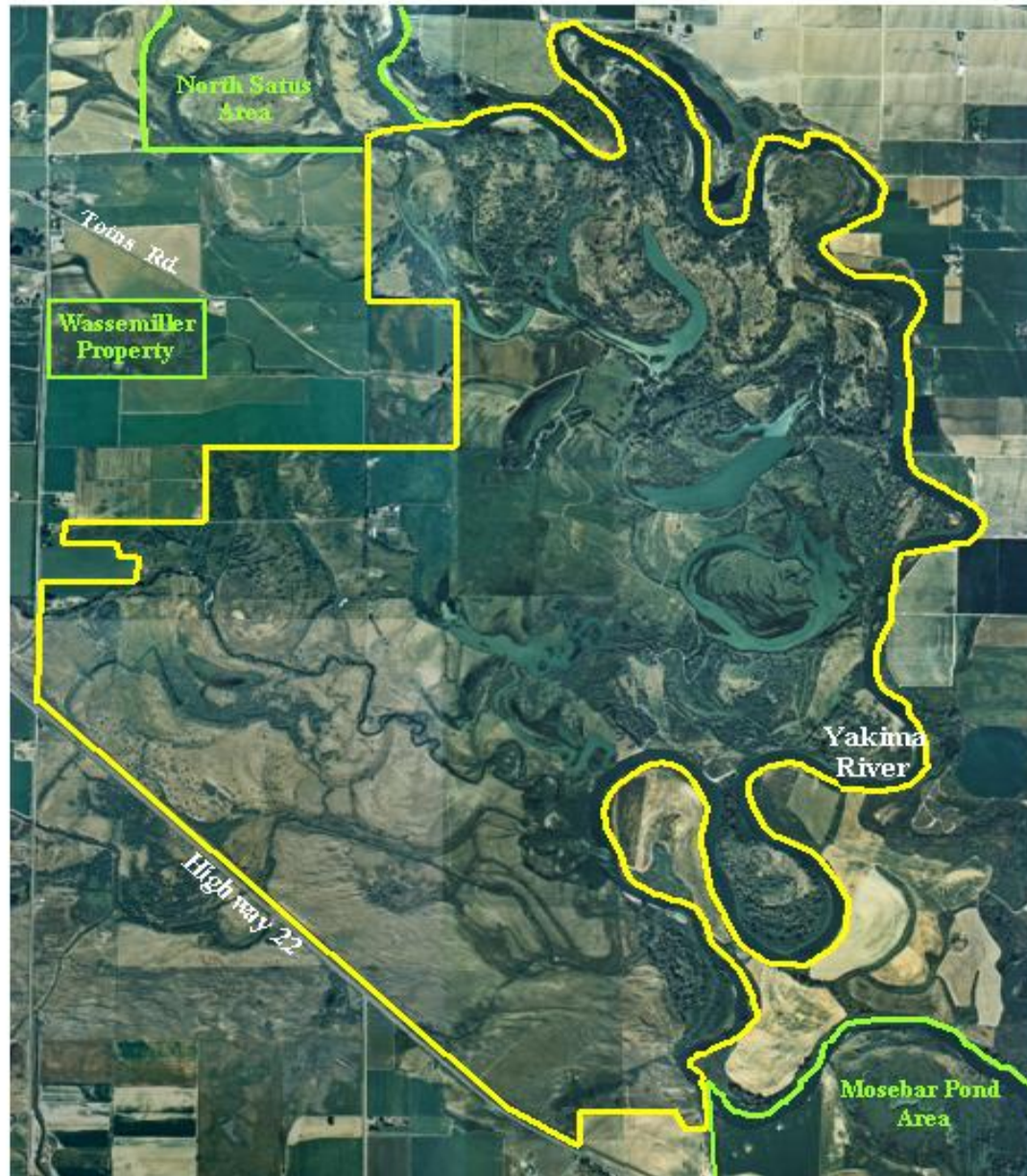


- Main channel**
- Islands**
- Disconnected flood plain channels / ponds**
- Connected off channels**



Satus Wildlife Area

1.0 Mile





3 15 '96







Floodplain Upland Restoration





4. 4. 2002

*Cultural protection and
enhancement guides these
restoration efforts*





9. 1. 2004

Nuisance Animal Control

- Problem beavers moved from irrigation canals/drains
- Transported and released into Mountains





Successful Bald Eagle Nesting & Fledging on Lower Yakima River, WA