

Yakima River Basin Water Enhancement Project



YRBWEP Property Improvements

REMOVED CATTLE

Weed Control:

Mechanical

Chemical

Biological, through WSU Entomology Grant

Revegetation:

Reseeding to native grasses

Basin Wildrye

Bluebunch Wheatgrass

Sandberg Bluegrass

Woody Plantings:

Black Cottonwood

Pacific Willow

Shrub Willow, Coyote & McKenzie

Redosier Dogwood

Golden Current

Woods Rose

Weed Control

Mechanical Control

Mowing and Disking, preparation for Chemical Applications or Seeding

Biological Control

Using Bioagents for Control of :

Diffuse and Spotted Knapweeds

Purple Loosestrife

Weed Control

Chemical Control

Application of Chemicals to Control Noxious and Invasive Weeds

Selection of Chemicals are Based Upon:

Effectiveness

Fish Friendly Chemicals

Based on LC50 for Rainbow Trout

WINPEST – Windows Pesticide Screening
Tool

Wenas Property

Acres – 429

Water – 888.1 Acre Feet

Improvements:

REMOVED CATTLE

Planting:

Approximately 35,000 plants

Black Cottonwood

Shrub Willow (Coyote & McKenzie)

Pacific Willow

Redosier Dogwood

Golden Current

Woods Rose

Enclosures:

Approximately 300 enclosures to protect cottonwoods and willows from beaver activity.

Weed Control:

Chemical

Mechanical

Biological Controls – 2004 Release of Bio-control to control Spotted and Diffuse Knapweeds

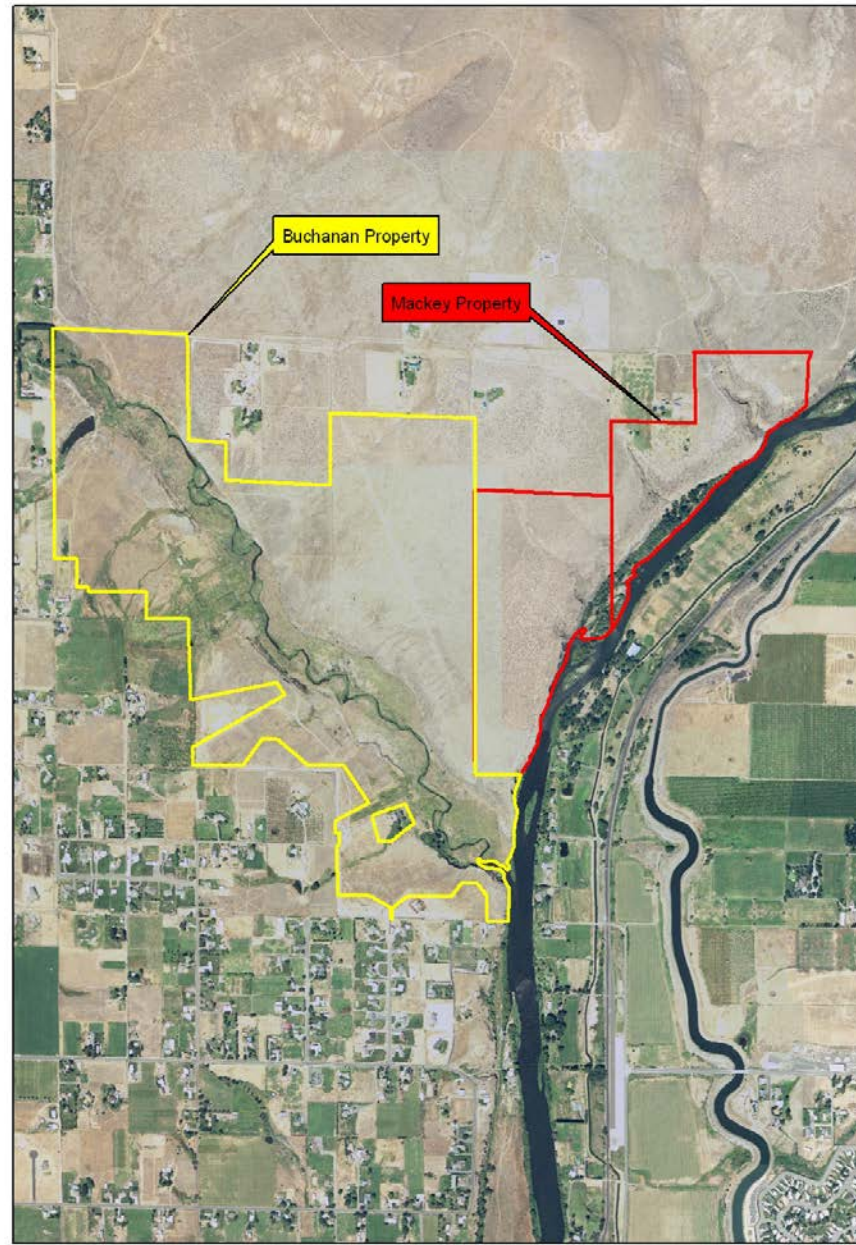
Cleanup:

Tons of Trash, Car Bodies, Fencing

Fencing:

Approx. 7,800 Feet of Fencing to Reduce Trespass

Wenas Property - General Reference



Approximate Property Boundary































Schaake Property

Acres – 285

Water – 625.8 Acre Feet

Improvements:

Planning:

Initial modeling completed by Rob Hildale, Bureau of Reclamation, Denver, Co. Developed alternatives for enhancing fish habitat.

Land Profile Inc. completed an initial study of the soil and water quality

Weed Control:

Chemical

Mechanical

Fencing:

Approx. 1,100 Feet of Fencing to Reduce Trespass



Parcel lines are general representations of property boundaries. Due to the accuracy of the aerial photos, the property boundaries (parcels) do not accurately depict the features displayed on the aerial photos.

Schaake Property

0 250 500 1,000 1,500 2,000 2,500 Feet

**REG. RED ANGUS.
YRLING BULLS
4-SALE 509 925 4176
CELL 899 3246**

UNITED STATES
GOVERNMENT

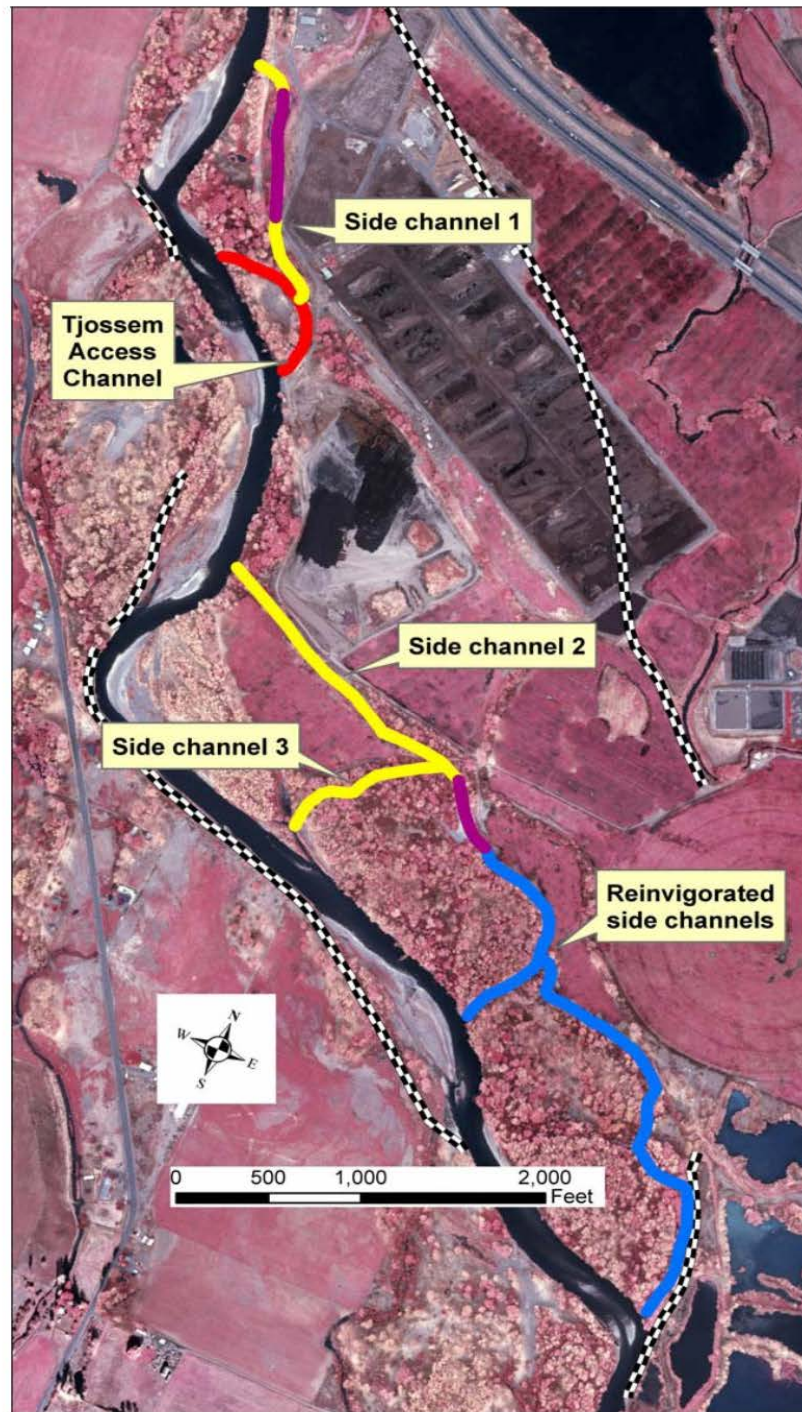
BUREAU OF RECLAMATION

NO
TRESPASSING

NO
HUNTING









Roy Property

Acres - 434

Water – 169 Ac. Ft., Ecology – 363.35 Ac. Ft.

Improvements:

REMOVED CATTLE

Weed Control:

Mechanical

Chemical

Biological, through WSU Entomology Grant

Revegetation:

Approx. 60 acres reseeded to native grasses

Basin Wildrye, Bluebunch Wheatgrass, Sandberg Bluegrass

Woody Plantings:

Approx. 1,000 plants along Moxee Slough

Black Cottonwood

Pacific Willow

Shrub Willow, Coyote & McKenzie

Redosier Dogwood

Golden Current

Woods Rose

McCormack Property

Acres – 145.93

Water – 60 Ac. Ft.

Improvements:

REMOVED CATTLE

Weed Control:

Mechanical

Chemical

Biological, through WSU Entomology Grant

Revegetation:

Approx. 15 acres reseeded to native grasses

Basin Wildrye

Bluebunch Wheatgrass

Sandberg Bluegrass

Real Property Removal

Double Wide, House, Garage, Out Buildings

Gerdes Property

Acres – 25

Water – None – coordinated a sale to a private party, changed the point of diversion to approx. 100 miles down stream

Improvements:

REMOVED CATTLE

Weed Control:

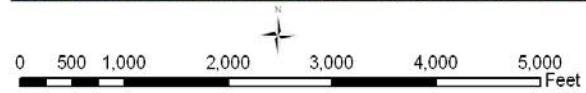
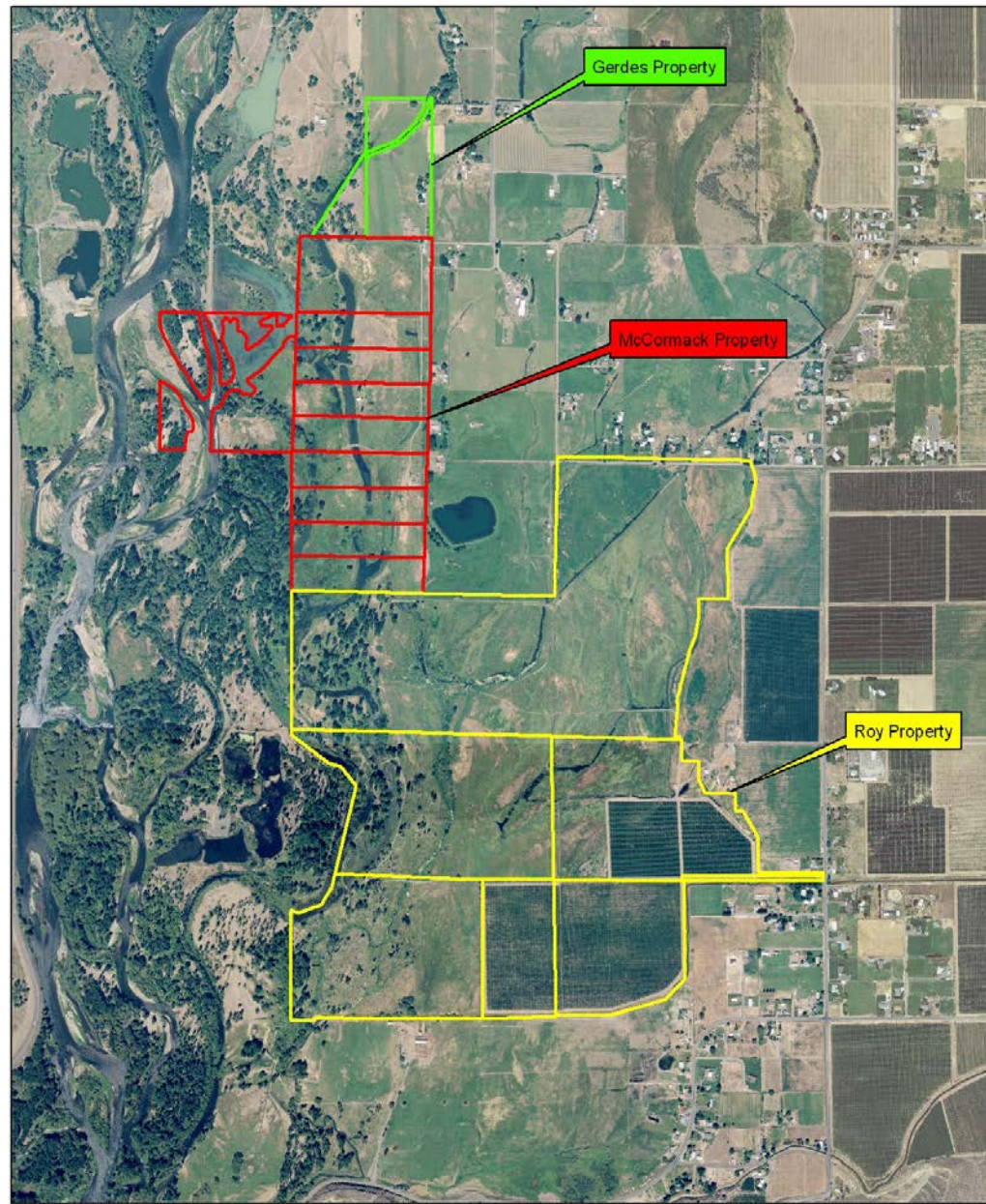
Mechanical

Chemical

Cleanup:

Extensive – Approx. 400 hrs and the buildings still need to be removed.

Union Gap Property - General Reference



Approximate Property Boundary

















Jeff Graham

Habitat Resource Specialist

Bureau of Reclamation

Office – (509) 575-5848, ext 287

jgraham@pn.usbr.gov