

# Gladmar: Research and Education Park

Central Washington University  
*in partnership with*  
Cascade Land Conservancy

**Dr. Wayne Quirk – Associate Vice President of Graduate Studies & Research CWU**

**Dr. Allen Sullivan – Assistant Professor Geography and Land Studies CWU**

**Jill Arango – Kittitas County Conservation Director CLC**

**Jim Armstrong – Kittitas County Trustee (Chair) CLC**

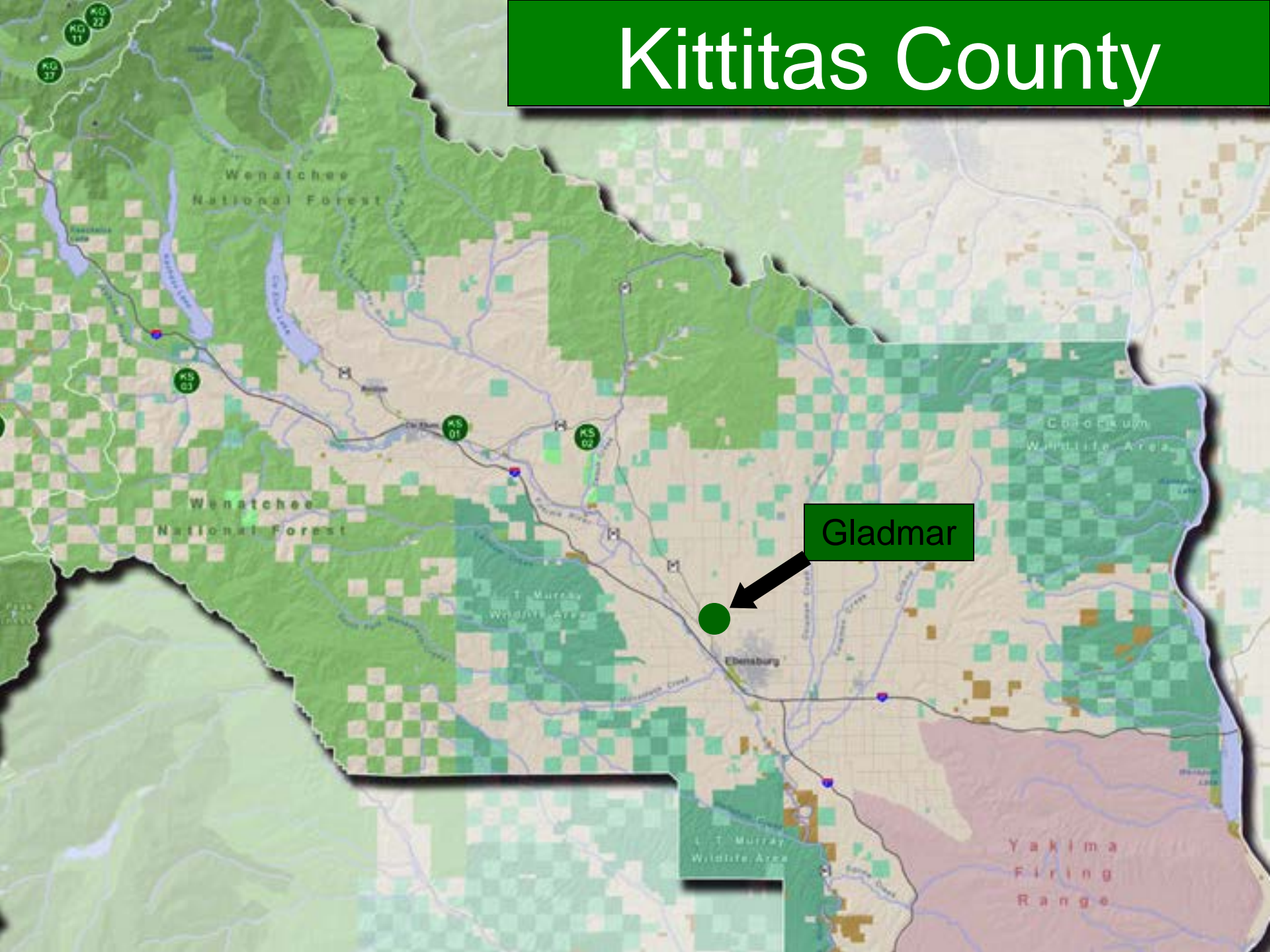
# Location



Gladmar Park is a 'new' 45-acre island located at the east end of Gladmar Road off I-90 exit 104 (Thorp), approximately 10 miles northwest of Ellensburg.

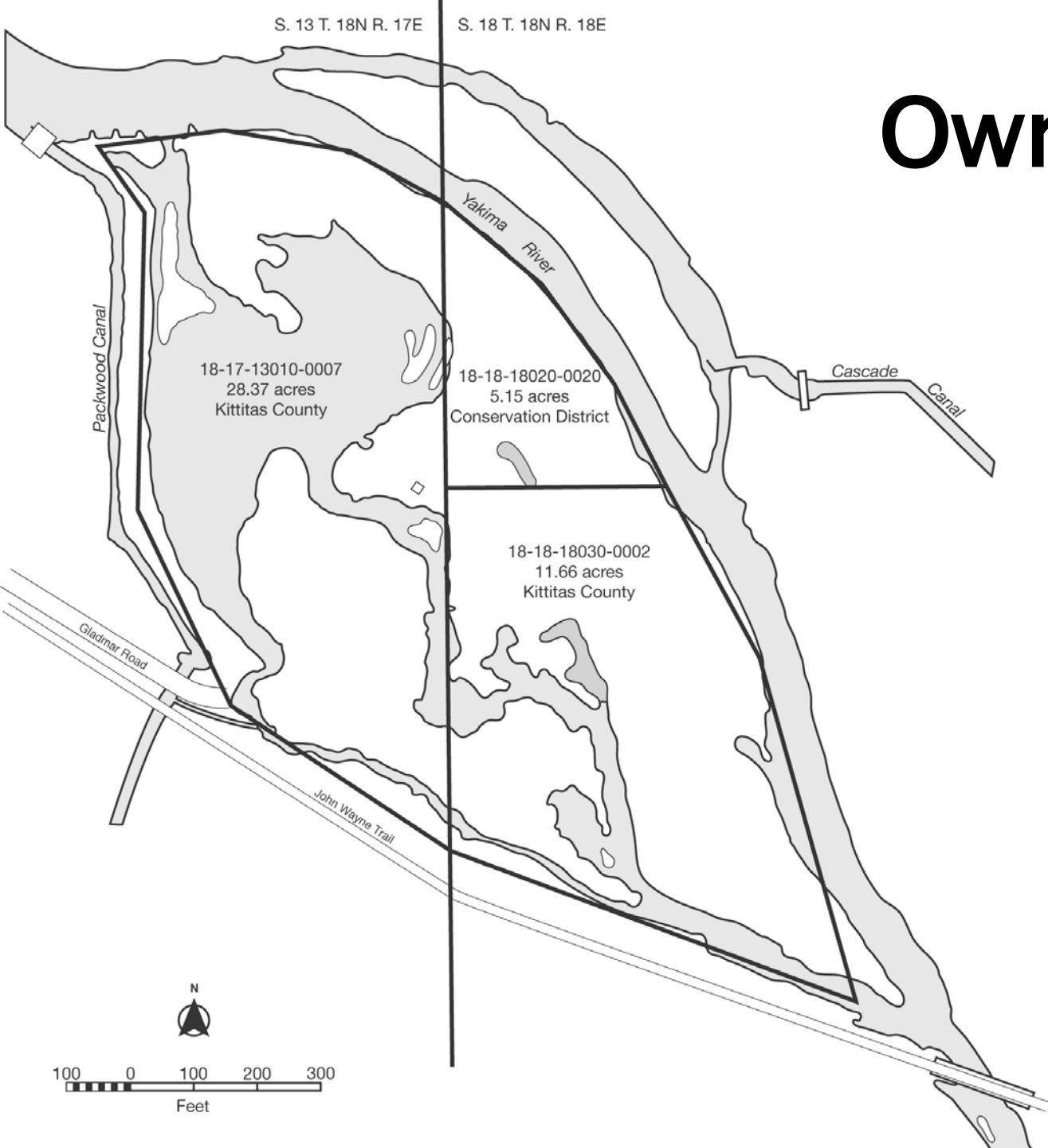


# Kittitas County



Gladmar

# Ownership



Kittitas County  
(±40 acres)

KCCD  
(±5 acres)







# Project Overview



- 50-year Interagency Agreement
- Create a living laboratory
- Restore public access

# History of Gladmar

A scenic view of a river flowing through a landscape with trees and hills under a blue sky with clouds. The river is in the foreground, reflecting the sky and the surrounding greenery. The middle ground shows a dense line of trees with some autumn-colored foliage. In the background, there are rolling hills under a clear blue sky with a few scattered clouds.

- Historic – an active channel–migration zone
- 1965 – purchased by WSDOT
- 1972 – transferred to Kittitas County
- 1978 – developed into park
- 1996 – flood destroyed infrastructure
- Current – early stages of ecological recovery and inaccessible to general public





SE 1/4 NE 1/4 S. 13  
T.18N R.17E W.M.

SW 1/4 NW 1/4 S.18  
T.18N R.18E W.M.

NE 1/4 SE 1/4 S. 13  
T. 18N R. 17E W.M.

NW 1/4 SW 1/4 S.18  
T.18N R.18E W.M.

1954

## Packwood

- diversion dam
- return flow channel

Mid-channel bars





SE 1/4 NE 1/4 S. 13  
T.18N R.17E W.M.

SW 1/4 NW 1/4 S.18  
T.18N R.18E W.M.

1964

NE 1/4 SE 1/4 S. 13  
T. 18N R. 17E W.M.

NW 1/4 SW 1/4 S. 18  
T.18N R.18E W.M.

**Packwood**  
• **diversion dam  
breach**

**Mid-channel bar  
stabilization**



1969

WSDOT

- gravel pit

Mid-channel bar  
stabilization





1977

Kittitas County

- gravel pit

Cascade Irrigation

- new headworks

SE 1/4 NE 1/4 S. 13  
T.18N R.17E W.M.

SW 1/4 NW 1/4 S.18  
T.18N R.18E W.M.

NE 1/4 SE 1/4 S. 13  
T. 18N R. 17E W.M.

NW 1/4 SW 1/4 S.18  
T.18N R.18E W.M.





1993

**Kittitas County**  
• **Gladmar Park**

1996

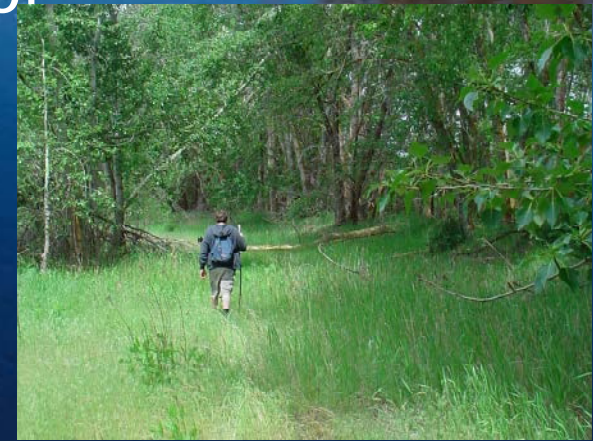
**Gladmar Park**  
• levy breach  
**Cascade channel constricture**



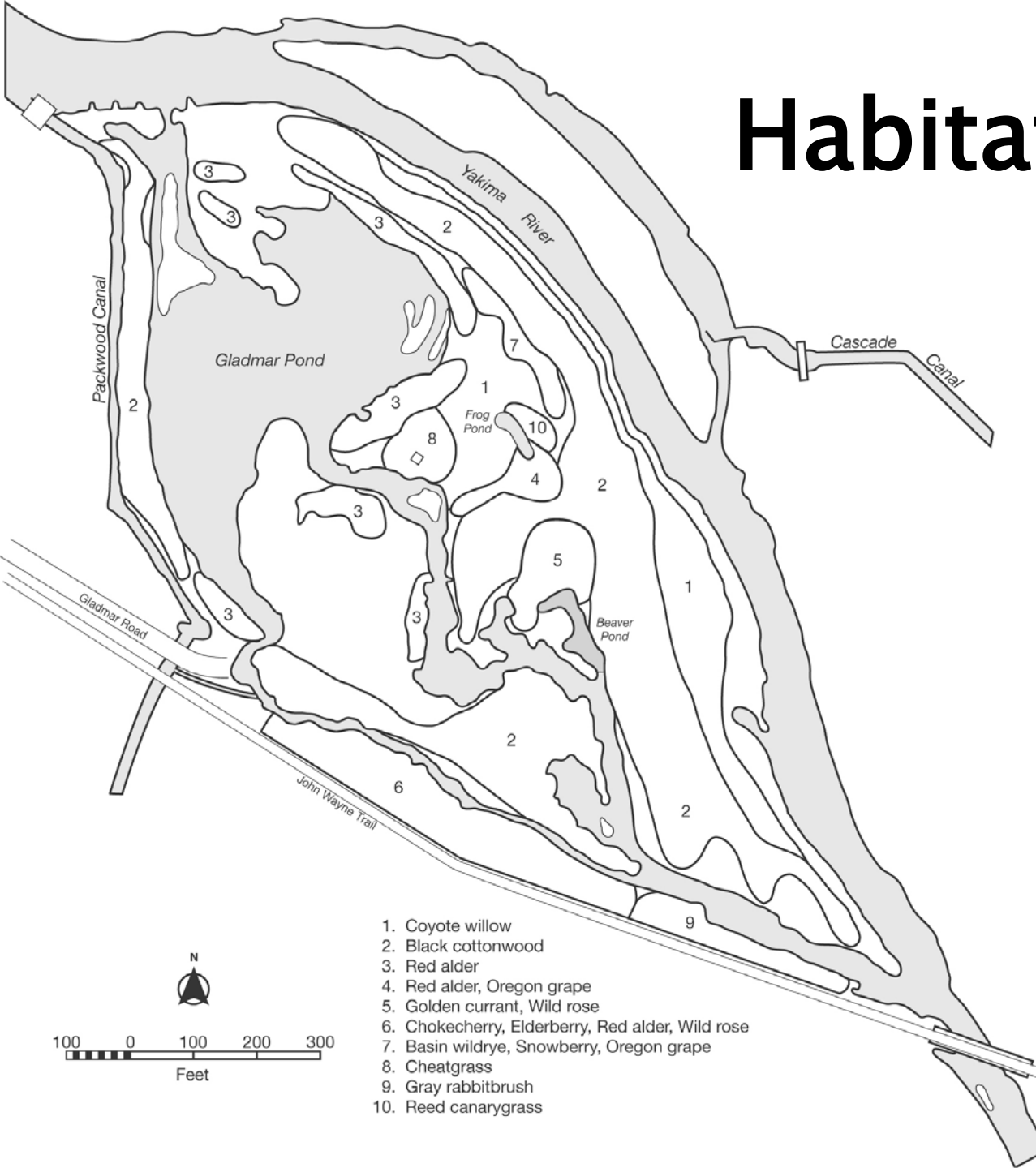


# Project Goals

- To preserve and protect the unique and valued environment of Gladmar Park
- To perform environmental stewardship and promote fish and wildlife habitat.
- To collaborate with partners in stewardship and education.
- To enhance access to the property for:
  - general public
  - K-12 students and faculty
  - University students and faculty
  - CWU research partners



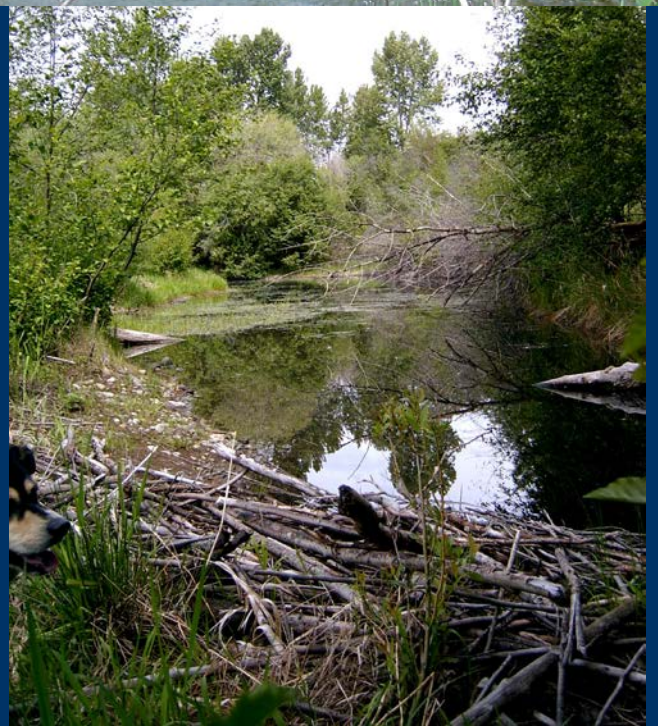
# Habitat Diversity













QuickTime™ and a  
TIFF (Uncompressed) decompressor  
are needed to see this picture.

QuickTime™ and a  
TIFF (Uncompressed) decompressor  
are needed to see this picture.

QuickTime™ and a  
TIFF (Uncompressed) decompressor  
are needed to see this picture.

QuickTime™ and a  
TIFF (Uncompressed) decompressor  
are needed to see this picture.

QuickTime™ and a  
TIFF (Uncompressed) decompressor  
are needed to see this picture.

QuickTime™ and a  
TIFF (Uncompressed) decompressor  
are needed to see this picture.

QuickTime™ and a  
TIFF (Uncompressed) decompressor  
are needed to see this picture.

QuickTime™ and a  
TIFF (Uncompressed) decompressor  
are needed to see this picture.

QuickTime™ and a  
TIFF (Uncompressed) decompressor  
are needed to see this picture.

QuickTime™ and a  
TIFF (Uncompressed) decompressor  
are needed to see this picture.

QuickTime™ and a  
TIFF (Uncompressed) decompressor  
are needed to see this picture.

QuickTime™ and a  
TIFF (Uncompressed) decompressor  
are needed to see this picture.

QuickTime™ and a  
TIFF (Uncompressed) decompressor  
are needed to see this picture.

QuickTime™ and a  
TIFF (Uncompressed) decompressor  
are needed to see this picture.

QuickTime™ and a  
TIFF (Uncompressed) decompressor  
are needed to see this picture.

QuickTime™ and a  
TIFF (Uncompressed) decompressor  
are needed to see this picture.

QuickTime™ and a  
TIFF (Uncompressed) decompressor  
are needed to see this picture.

QuickTime™ and a  
TIFF (Uncompressed) decompressor  
are needed to see this picture.



# Research and Education Potential



- Field research a strong component of life and physical sciences
- Rich biodiversity
- Wide range of disciplines
- Proximity to K–12 schools and University



# Proposed Improvements



- **Parking Area**
- **Footbridge**
- **Walking Trails**
- **Environmental Cleanup**
  - **Removal of Asphalt**
  - **Weed Management**
  - **Litter and Debris**



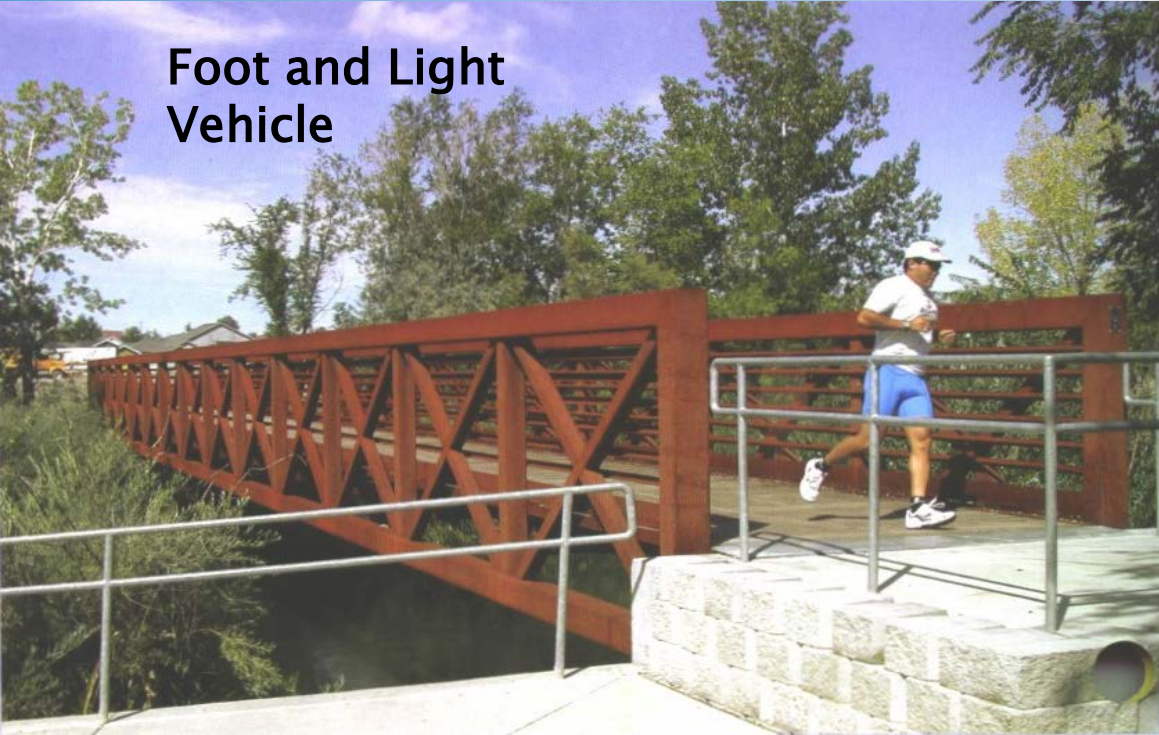
# Parking Area



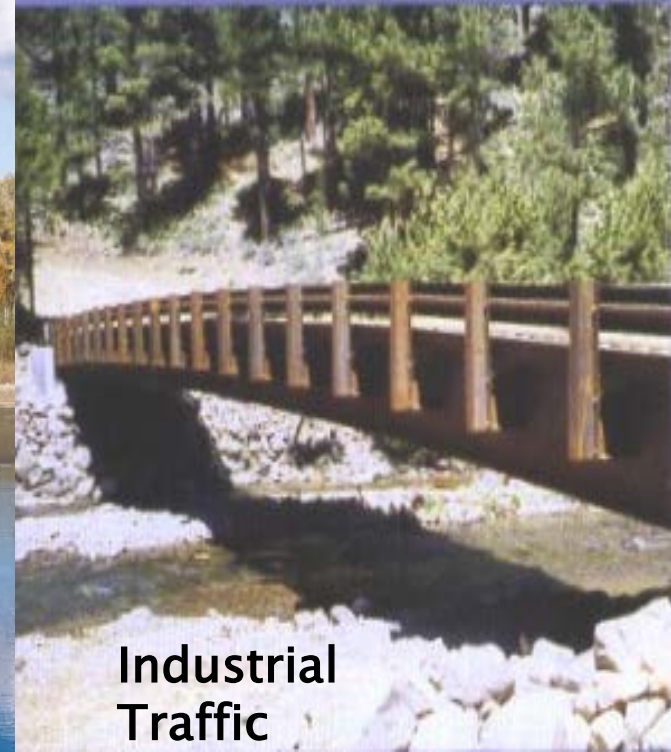


# Access

Foot and Light Vehicle



Industrial Traffic



Foot Traffic Only





# Walking Trails





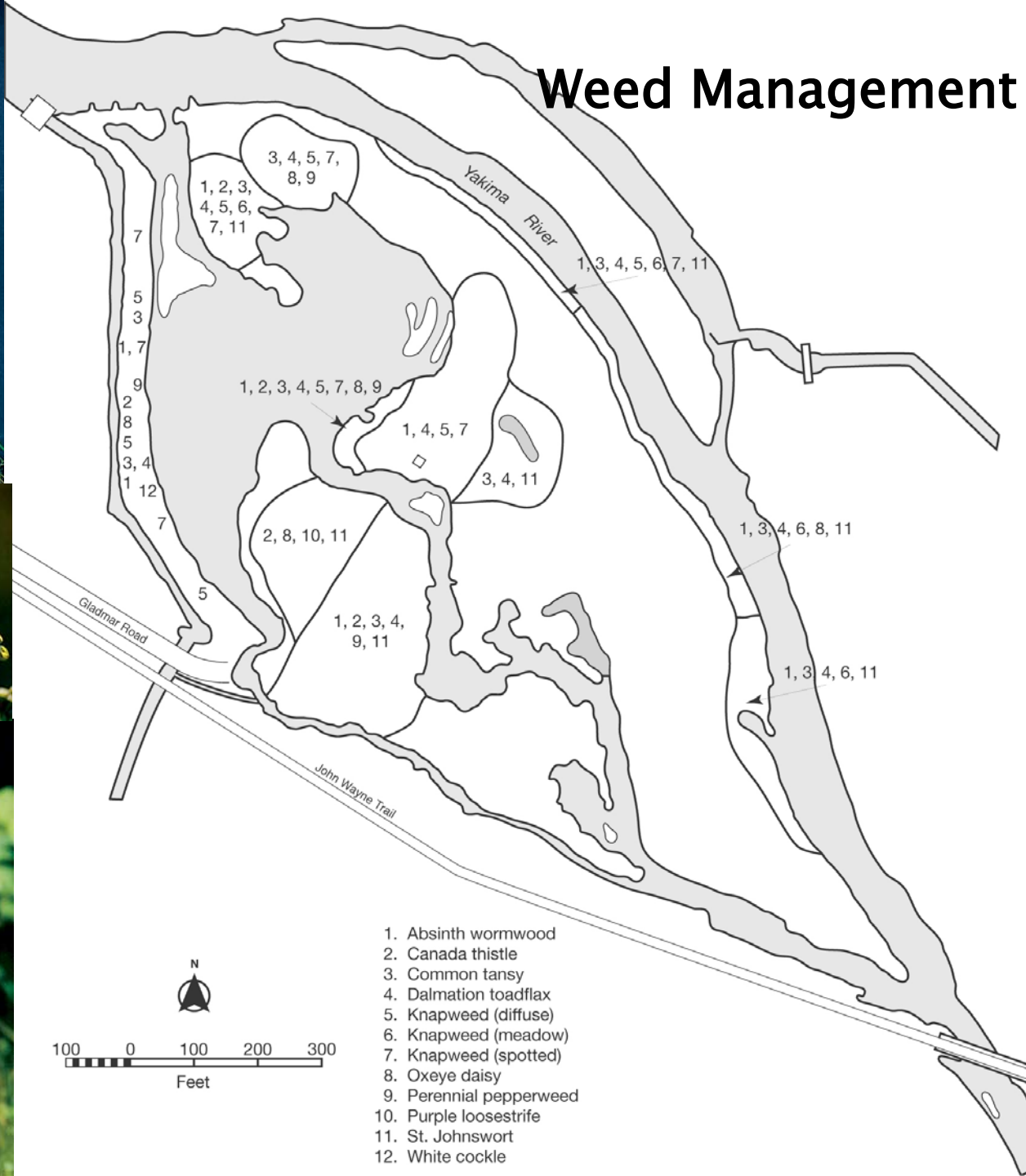
# Environmental Cleanup

## Asphalt Removal





# Weed Management





# Litter and Debris





# Special Considerations



- Public Access
- Kittitas County Conservation District
- Irrigation Infrastructure



# Irrigation Diversions



Packwood Canal Company



Cascade Irrigation District

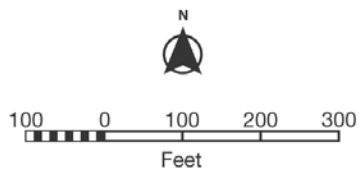
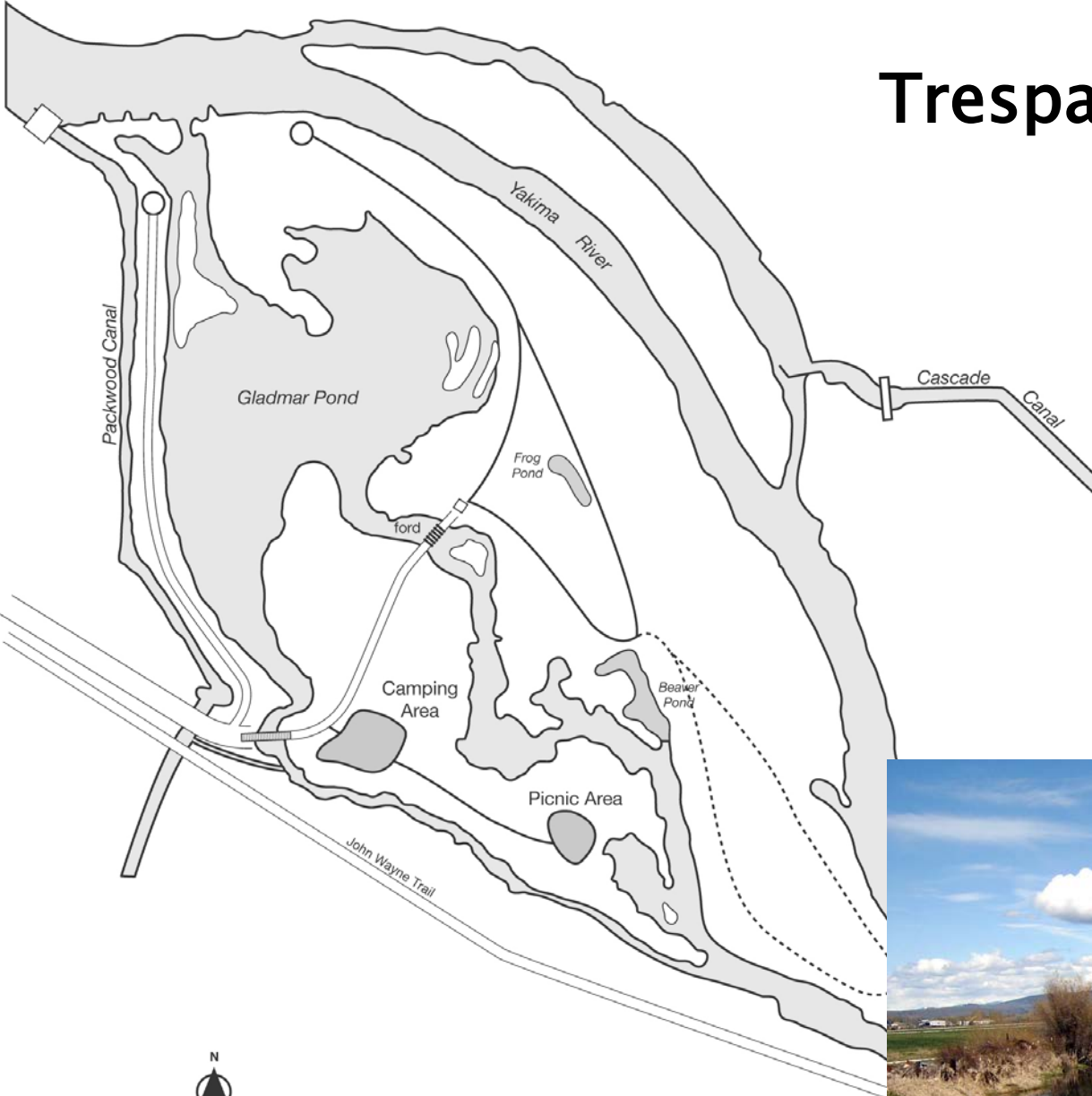


# Levy Maintenance





# Trespass / Liability



- Alternative 1 (represented by a double line)
- Alternative 2 (represented by a solid line)
- Alternative 3 (represented by a dashed line)



# Project Benefits



- Enhanced public use
- Close to schools
- Restoration of natural habitat
- Environmental cleanup
- Regionally–significant research
- Education, stewardship, and interpretive opportunities



