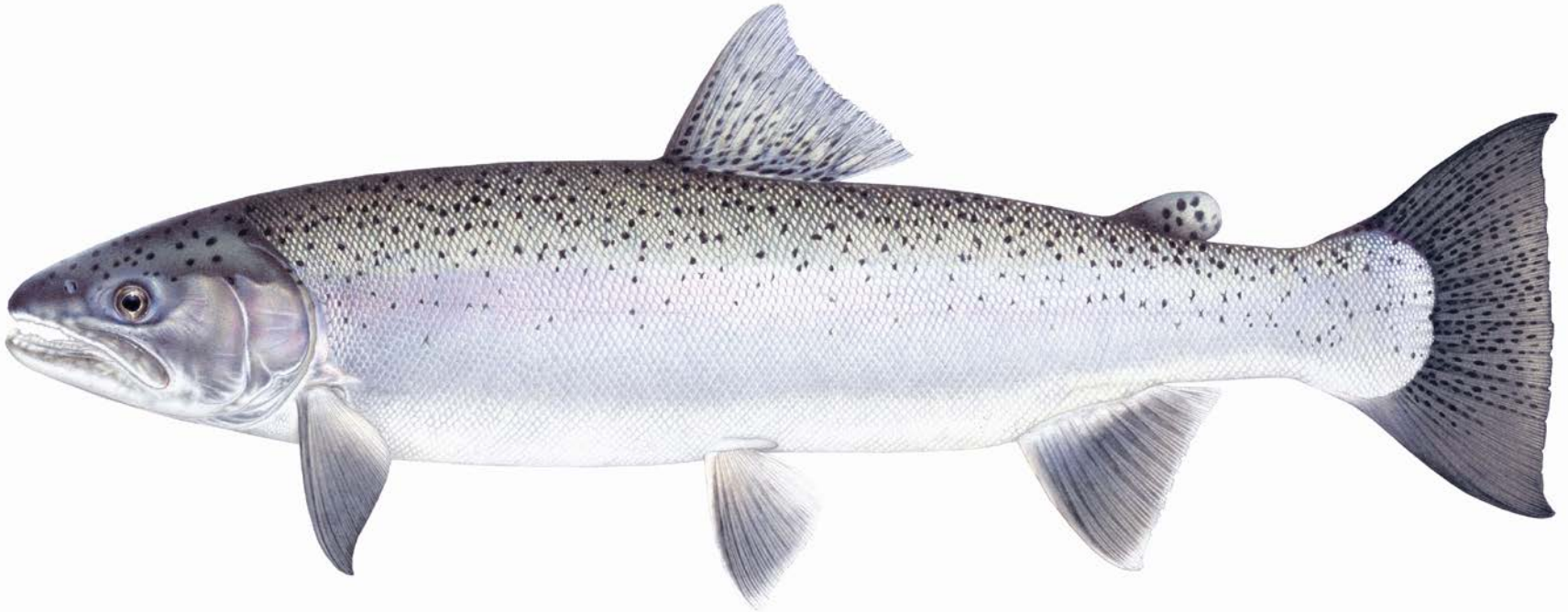


PUBLIC – PRIVATE – TRIBAL

Fostering Successful Collaborations



LEGISLATED POLICIES

State Environmental Policy Act

Growth Management Act

Trust Water Program

Interlocal Cooperation Act



NATURAL RESOURCE CONSERVATION

Fish & Wildlife Habitat Protections

Public, Private, Tribal Collaboration Projects

MASTER PLANNED RESORTS

Lands that comprise a self-contained and fully integrated planned unit development located in areas of significant natural amenities, with primary focus on destination resort facilities consisting of short term visitor accommodations associated with a range of developed on-site indoor or outdoor recreational facilities.

Kittitas County Comprehensive Plan, 2003

CITY OF RONALD

MAIN LODGE
RESORT OFFICE AND ACTIVATION CENTER
RESORT CONFERENCE CENTER
PRESERVE

MPR SITE-PLAN

MountainStar ~1999

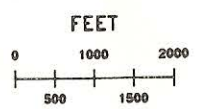
RETREAT LODGE AND CONFERENCE CENTER

PLANNING AREA NO. 10 TO REMAIN IN SELECTIVE FOREST PRODUCTION FOR RECREATIONAL OPEN SPACE USE

NORTH



SCALE:







1 ACRE



COMMUNITY RIVER ACCESS TRAIL SYSTEM

1+ ACRE HOMESITES WITH CENTRAL OPEN SPACE

DRAWING LEGEND:

-  NATURAL AREA
-  GOLF COURSE AND PARKS
-  DEVELOPED SPACE
-  RESORT BOUNDARY

KIDS PUBLIC FISHING POND

WESTSIDE ACCESS ROAD AND TRAIL



CITY OF RONALD

MAIN LODGE
RESORT C
AND ACTI
RESORT C
PRESERVE

CHALET

FISHERIES
ENHANCEMENT
AREA

STEEP SLOPES

CHALET

RETREAT LODGE AND CONFERENCE CENTER

COMMUNITY RIVER
ACCESS TRAIL SYSTEM

STEEP SLOPES

CHALET

CHALET

CHALET

CHALET

CHALET

CHALET

CHALET

CHALET

CHALET

SPORT PARK

SPORT PARK

SPORT PARK

SPORT PARK

SPORT PARK

SPORT PARK

SPORT PARK

SPORT PARK

SPORT PARK

MPR SITE-PLAN

MountainStar ~1999

CHAMPIONSHIP GOLF COURSE SETTING

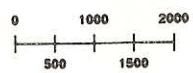
PLANNING AREA NO. 10 TO REMAIN
IN SELECTIVE FOREST PRODUCTION FOR
RECREATIONAL OPEN SPACE USE

NORTH



SCALE:

FEET



1 ACRE



1+ ACRE HOMESITES WITH
CENTRAL OPEN SPACE

DRAWING LEGEND:

-  NATURAL AREA
-  GOLF COURSE AND WATER
-  DEVELOPED SPACE
-  RESORT BOUNDARY

Development proposed
in the Cle Elum River
geomorphic floodplain

KIDS PUBLIC FISHING POND

GOAL: “No net loss of fish and wildlife habitat in connection with the development of the MPR”

Cooperative Agreement

December 2000

WA Dept. of Fish & Wildlife

A state agency

Trendwest Resorts

A private corporation

Yakama Nation

A sovereign government

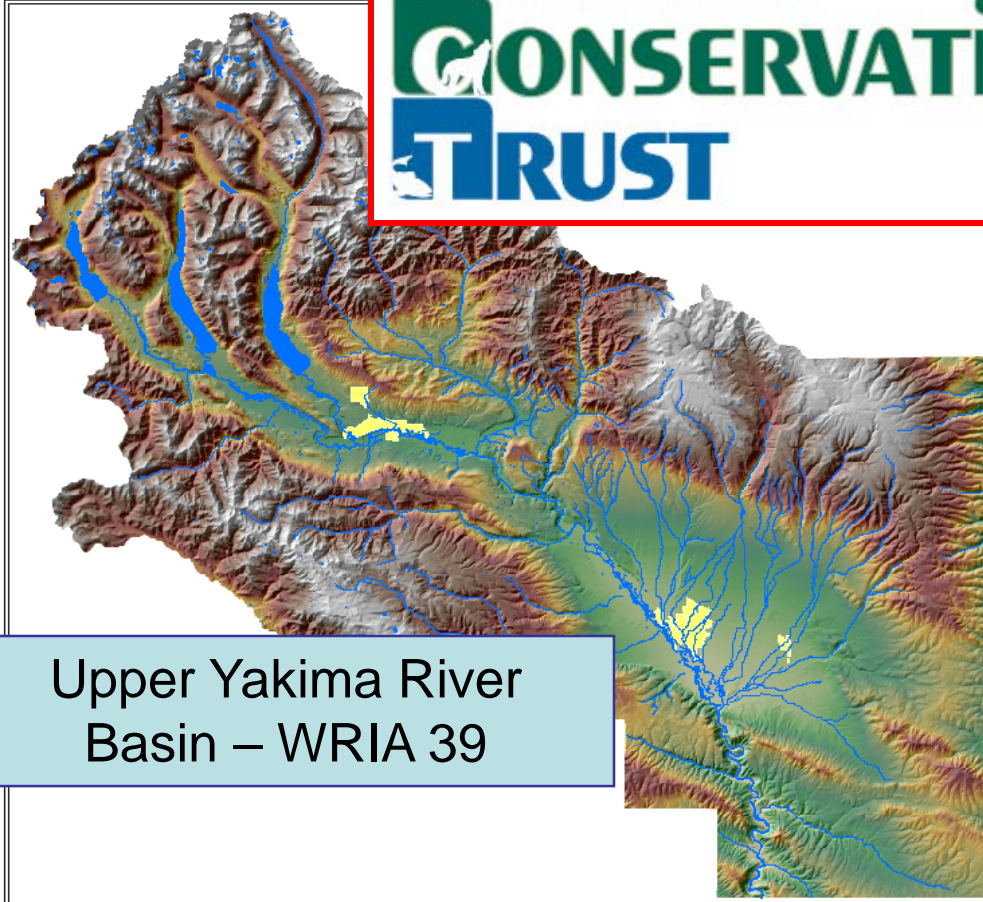
**Organize and support a qualified land
and water conservation corporation**



Incorporated under the laws of the State of Washington, July 2002

GOAL- No net loss of productive fish and wildlife habitat in connection with the development of Suncadia Resort

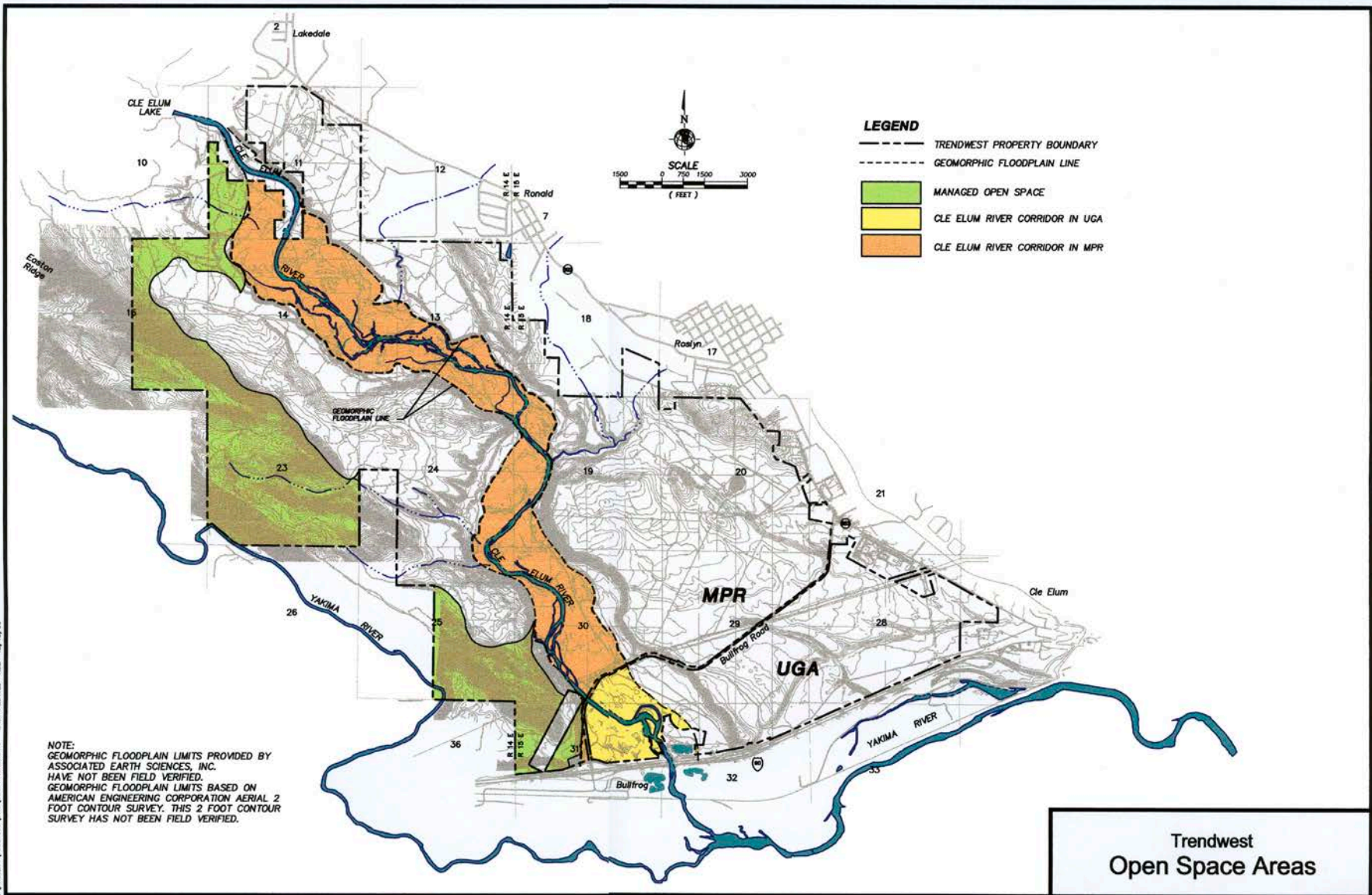
**KITTITAS
CONSERVATION
TRUST**



Upper Yakima River
Basin – WRIA 39

MISSION -
Protect and
enhance fish
and wildlife
habitat,
open space,
cultural and
recreational
resources, and
scenic views in
the Upper
Yakima River
Basin

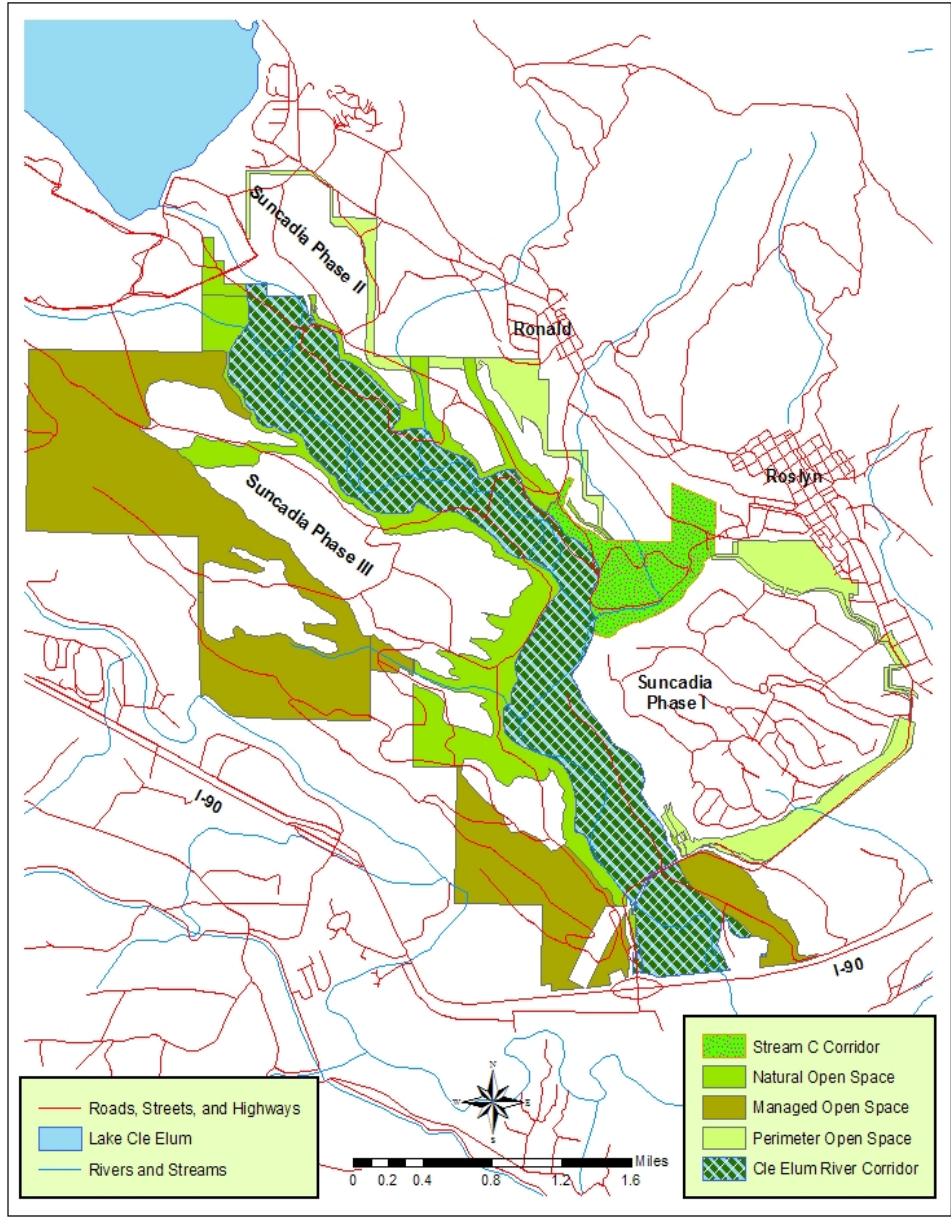
Trendwest Protected Open Space Areas





- **Monitor and Steward - on-site MPR Conservation Easements (3,500+ ac.)**

Suncadia Open Space



Conservation Easements

Cle Elum River Corridor

~ 1,215 acres

PH3 Natural Open Space

502.4 acres

PH3 Managed Open Space

1,361 acres

Stream "C" Corridor

228.6 acres

PH2 Natural Open Space

130.7 acres

TOTAL 3,437.6 ac.



- **Monitor and Steward - on-site MPR Conservation Easements (3,500+ ac.)**



- **Monitor and Steward - on-site MPR Conservation Easements (3,500+ ac.)**
- **Acquisition and Protection - off-site Habitat Acreage during build-out**

Priority Reaches





- **Monitor and Steward - on-site MPR Conservation Easements (3,500+ ac.)**
- **Acquisition and Protection - off-site Habitat Acreage during build-out**



- **Monitor and Steward - on-site MPR Conservation Easements (3,500+ ac.)**
- **Acquisition and Protection - off-site Habitat Acreage during build-out**
- **Water Rights Acquisition - Instream Flow Enhancement - Yakima Basin**



WATER – vital ingredient for habitat & development

BIG CREEK

Fish passage mitigation





- **Monitor and Steward - on-site MPR Conservation Easements (3,500+ ac.)**
- **Acquisition and Protection - off-site Habitat Acreage during build-out**
- **Water Rights Acquisition - Instream Flow Enhancement - Yakima Basin**



- **Monitor and Steward - on-site MPR Conservation Easements (3,500+ ac.)**
- **Acquisition and Protection - off-site Habitat Acreage during build-out**
- **Water Rights Acquisition - Instream Flow Enhancement - Yakima Basin**
- **Salmon Habitat Restoration - upper Yakima Basin Projects**

SUNCADIA
CONSERVATION
EASEMENTS

NORTH FORK
TEANAWAY RIVER
CONSERVATION
EASEMENT

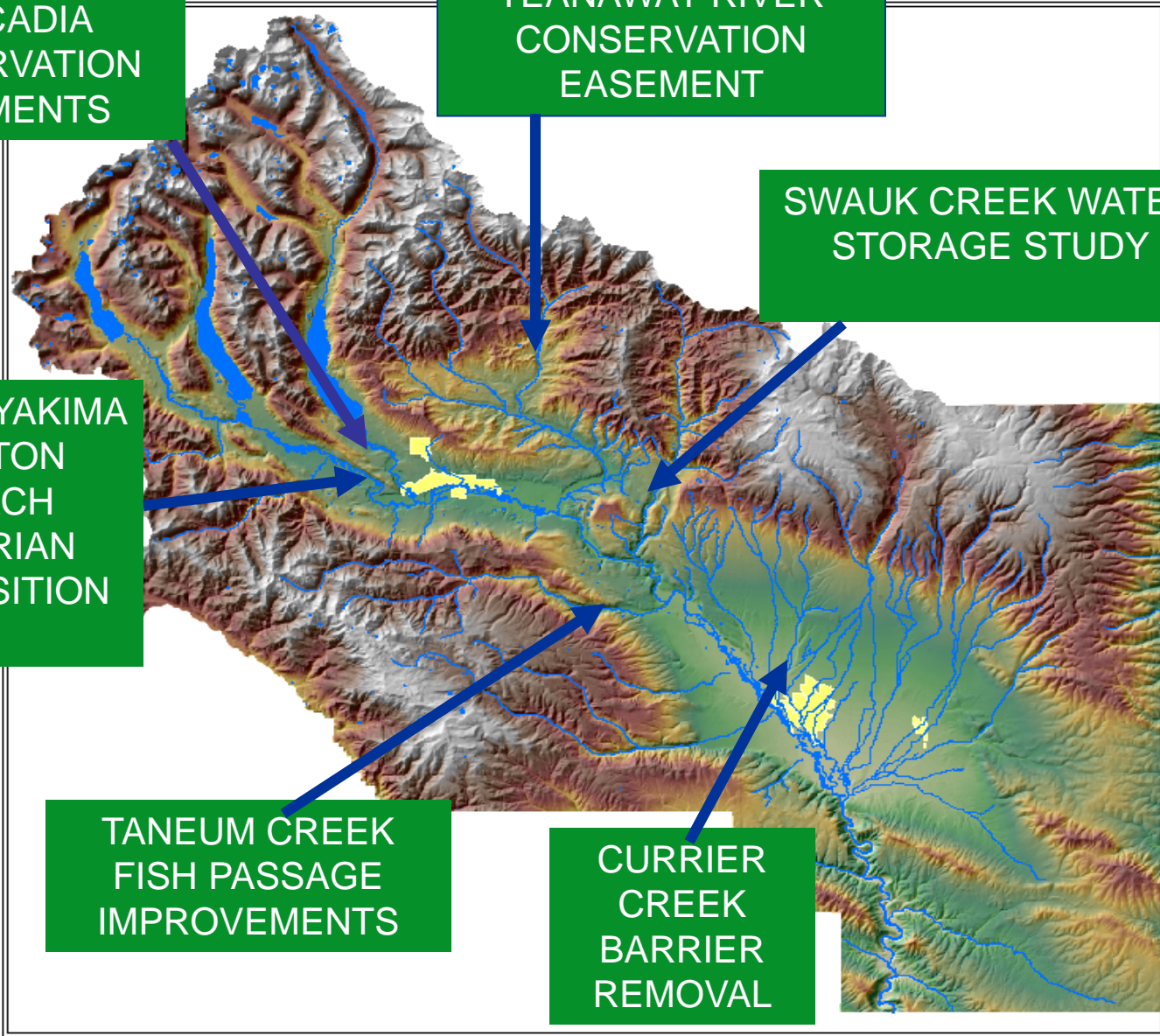
SWAUK CREEK WATER
STORAGE STUDY

UPPER YAKIMA
EASTON
REACH
RIPARIAN
ACQUISITION

TANEUM CREEK
FISH PASSAGE
IMPROVEMENTS

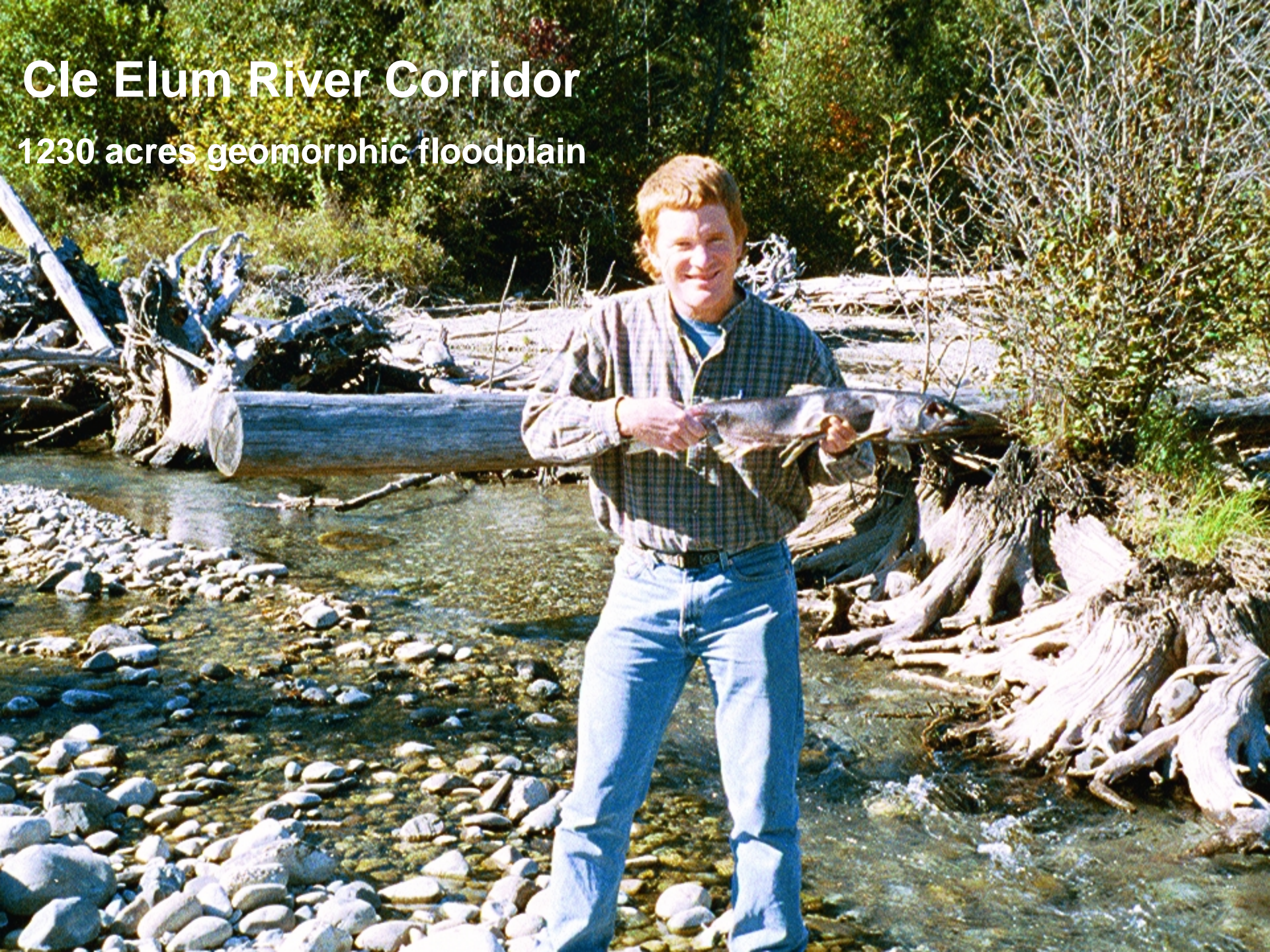
CURRIER CREEK
BARRIER
REMOVAL

KCT HABITAT PROJECT LOCATIONS

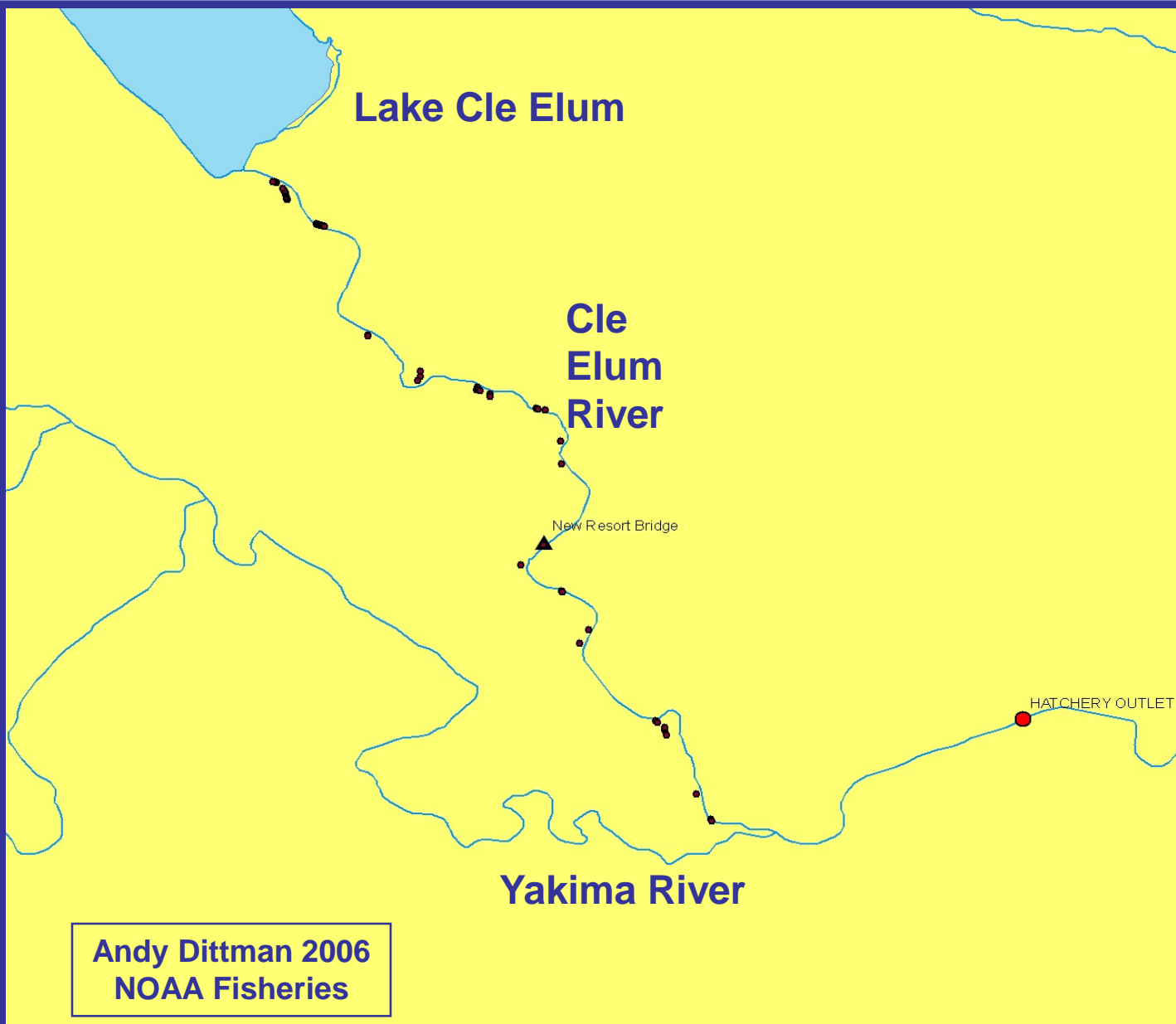


Cle Elum River Corridor

1230 acres geomorphic floodplain



Spring Chinook Redds – Lower Cle Elum River - 2006





Salmon habitat / Water conveyance channel

Lake Cle Elum

Cle Elum River Restoration Phase I Roslyn, WA

Primary Project Reach. main channel length = 1832 m
Primary Project side channel restoration = 7382 m

3 log jams

PRIMARY PROJECT AREA

Side Channel	meters	Side Channel	meters
1-1	2125	2-1	620
1-2	254	2-2	988
1-3	373	2-3	467
1-4	473	2-4	137
1-5	517	2-5	100
1-6	509	2-6	473
1-7	375	2-7	488
1-8	96	Total	2643
Total	4739		

TOTAL RESTORATION = 7382

Secondary Project Reach. main channel length = 442 m
Secondary Project side channel restoration = 1942 m

SECONDARY PROJECT AREA

Side Channel	meters	Side Channel	meters
3-1	409	4-1	603
3-2	649	Total	603
3-3	146		
3-4	135		
Total	1339		

TOTAL RESTORATION = 1942

SITE 1

SITE 2

SITE 3



SITE 4


GRAVEL SOURCE
OPERATIONS & MATERIAL STAGING


Ground Access Road

Ground Access Road

0 500 meters

-  Primary engineered logjam location
-  Secondary engineered logjam location

 Approximate helicopter flight radius from staging area to primary project work areas

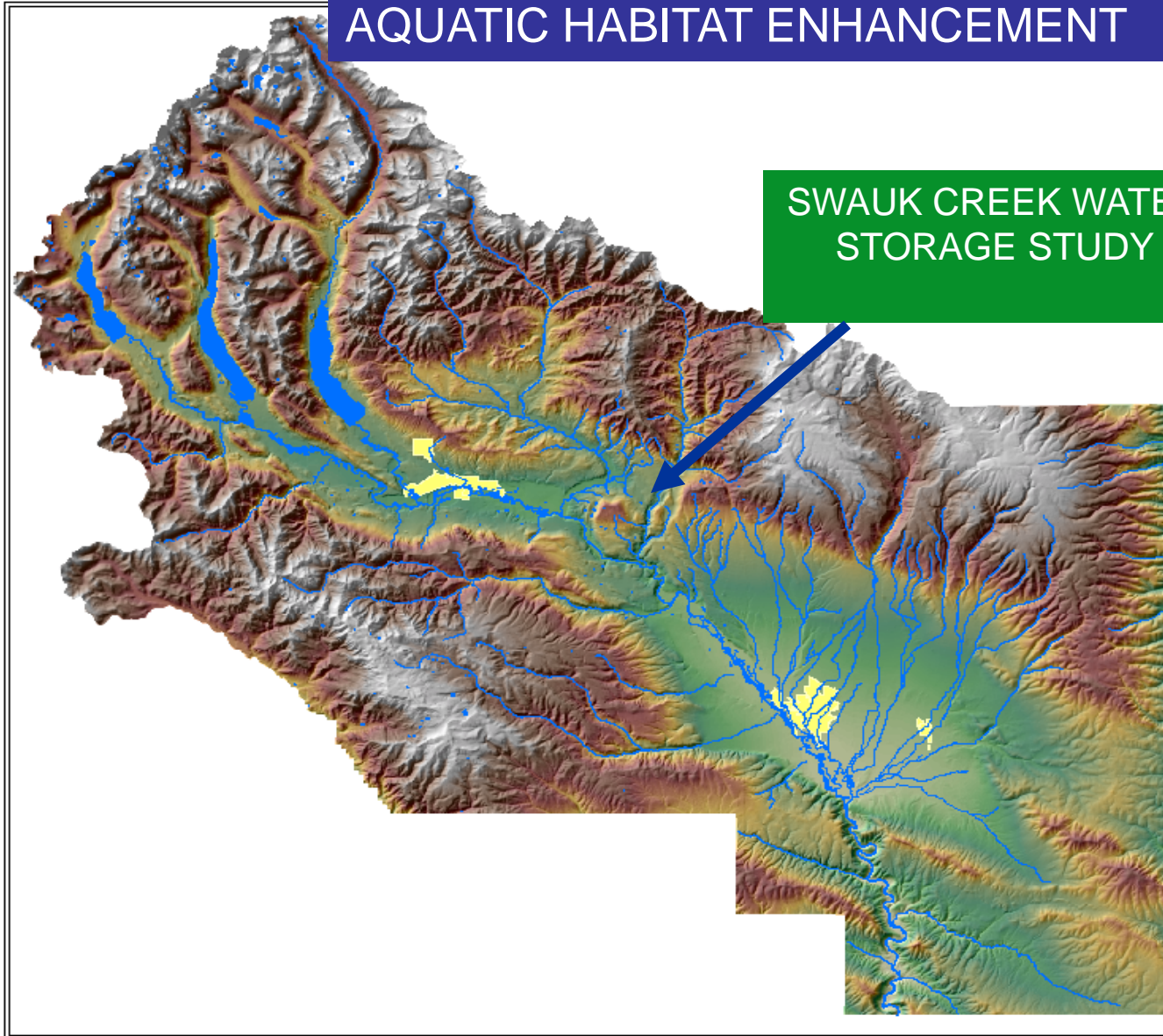
 Ground access roads

USGS orthophotos: July 25, 1998

Tim Abbe
Herrera Environmental Consultants
tabbe@herrerainc.com
David Gerth
Kittitas Conservation Trust
kct@inlandnet.com

FILE: Cle Elum 2.CNV

OFF SITE – INSTREAM FLOW & AQUATIC HABITAT ENHANCEMENT



SWAUK CREEK WATER STORAGE STUDY

KCT HABITAT PROJECT LOCATIONS

**SWAUK CREEK
SPRING 2006**



Can 300-500 ac-ft be stored for late season use?

SWAUK CREEK HYDROGRAPH – Water Year 2006

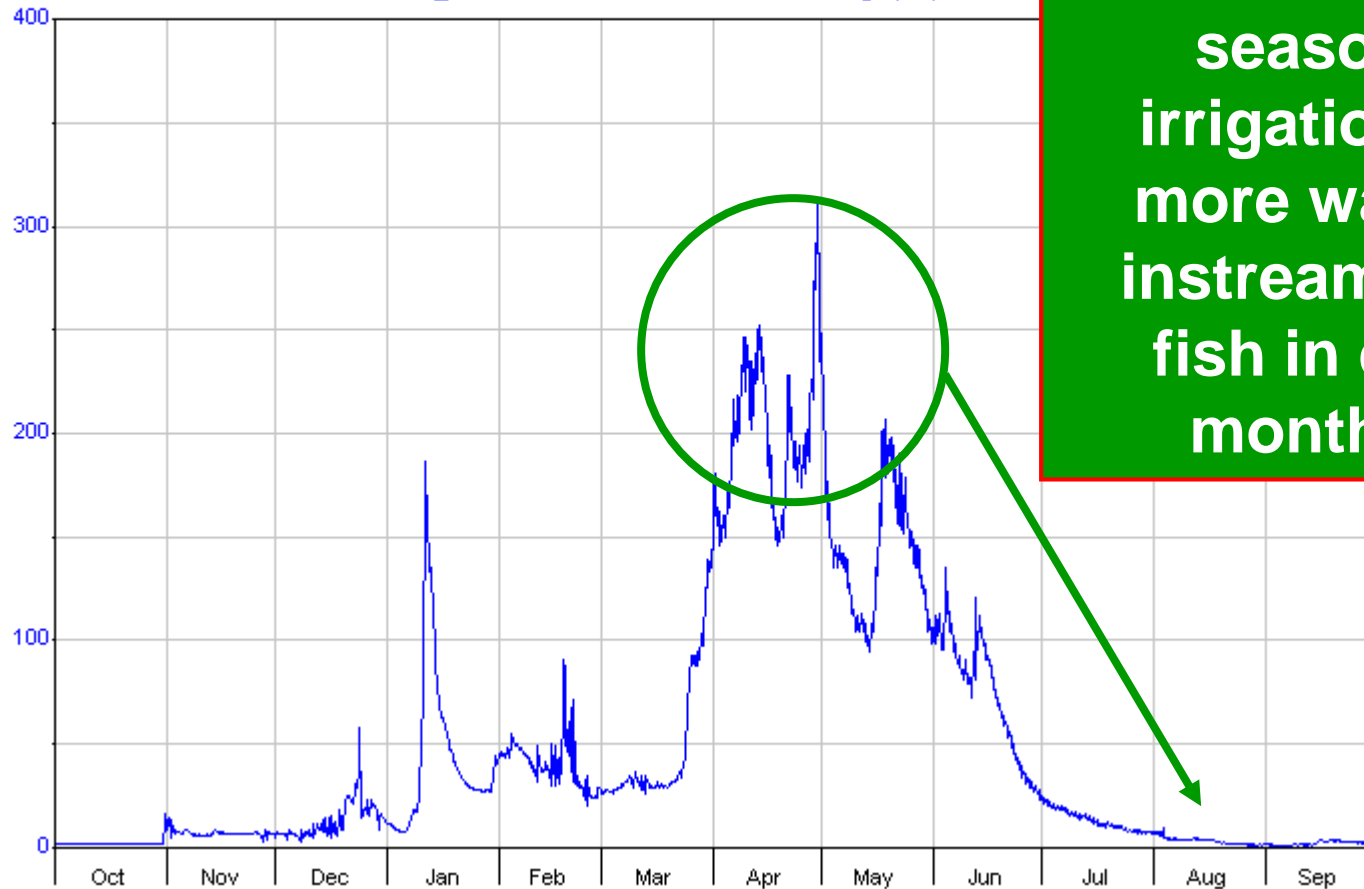
Washington State Dept. of Ecology

Period 1 Year Plot Start 00:00_10/01/2005

Interval 12 Hour Plot End 00:00_10/01/2006

— 39M100

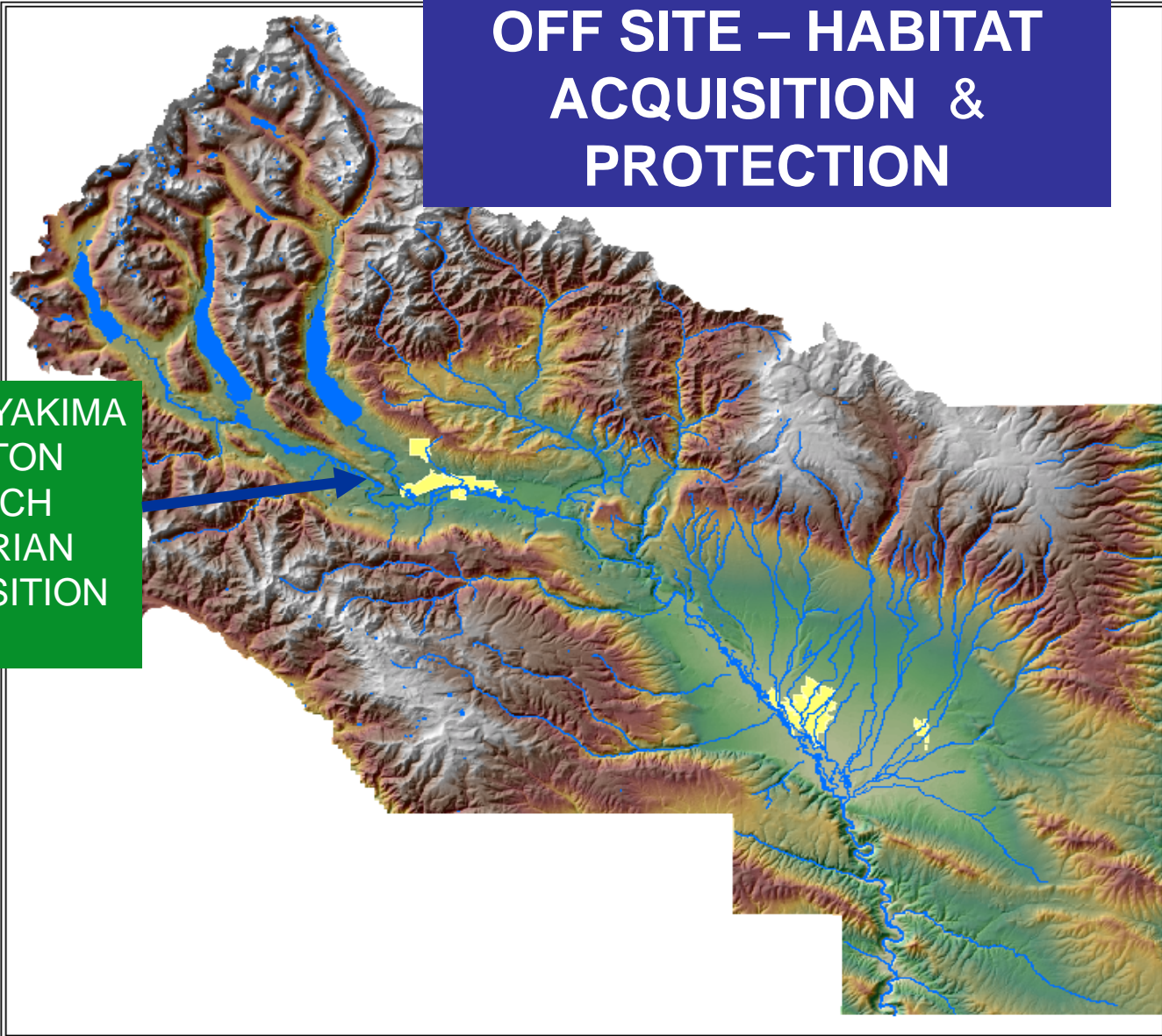
Swauk Cr.@ Lauderdale 262.00 Max & Min Discharge (cfs)



Store early season peak flows for late season irrigation = more water instream for fish in dry months

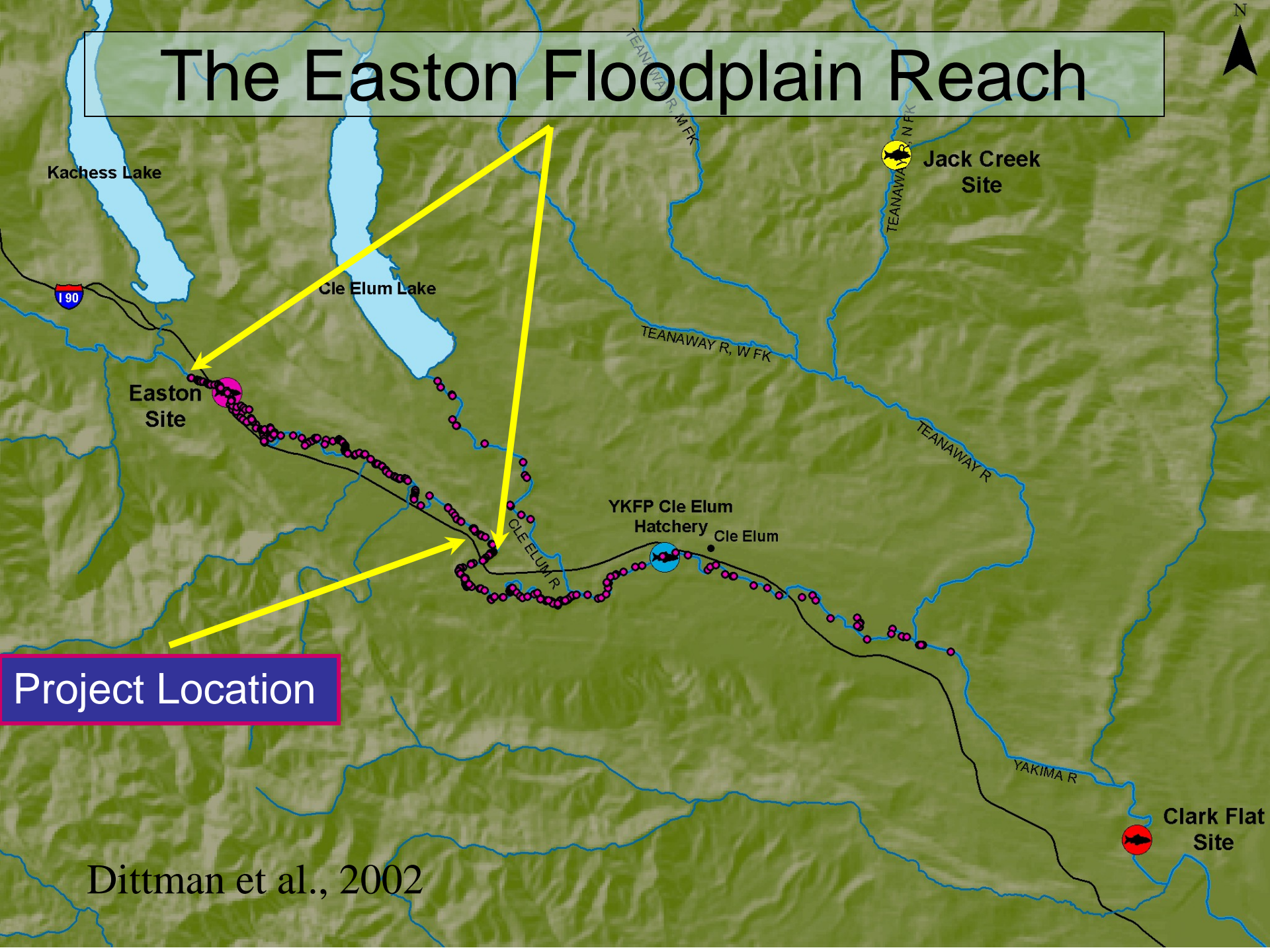
OFF SITE – HABITAT ACQUISITION & PROTECTION

UPPER YAKIMA
EASTON
REACH
RIPARIAN
ACQUISITION



KCT HABITAT PROJECT LOCATIONS

The Easton Floodplain Reach



Easton Site

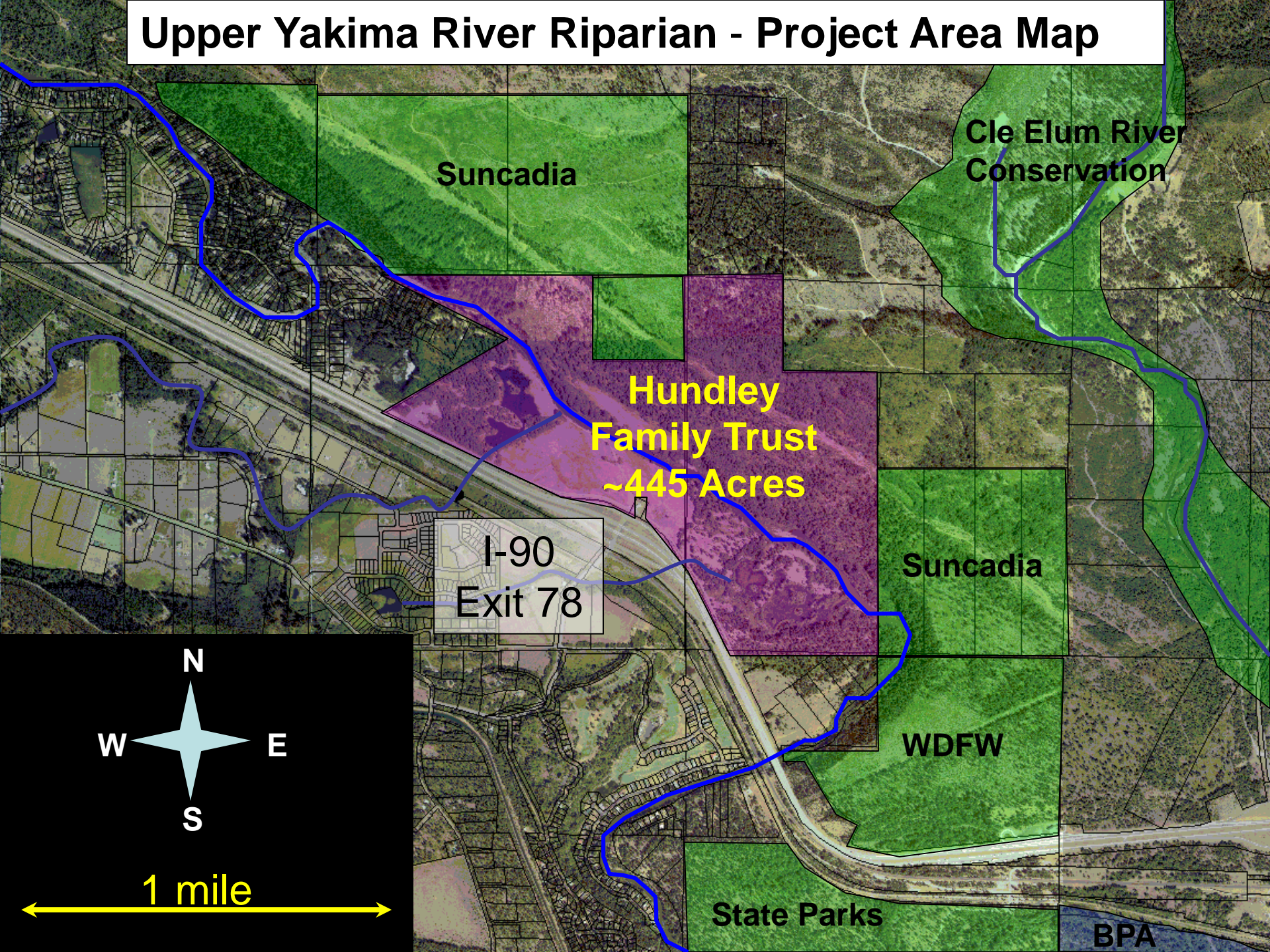
Jack Creek Site

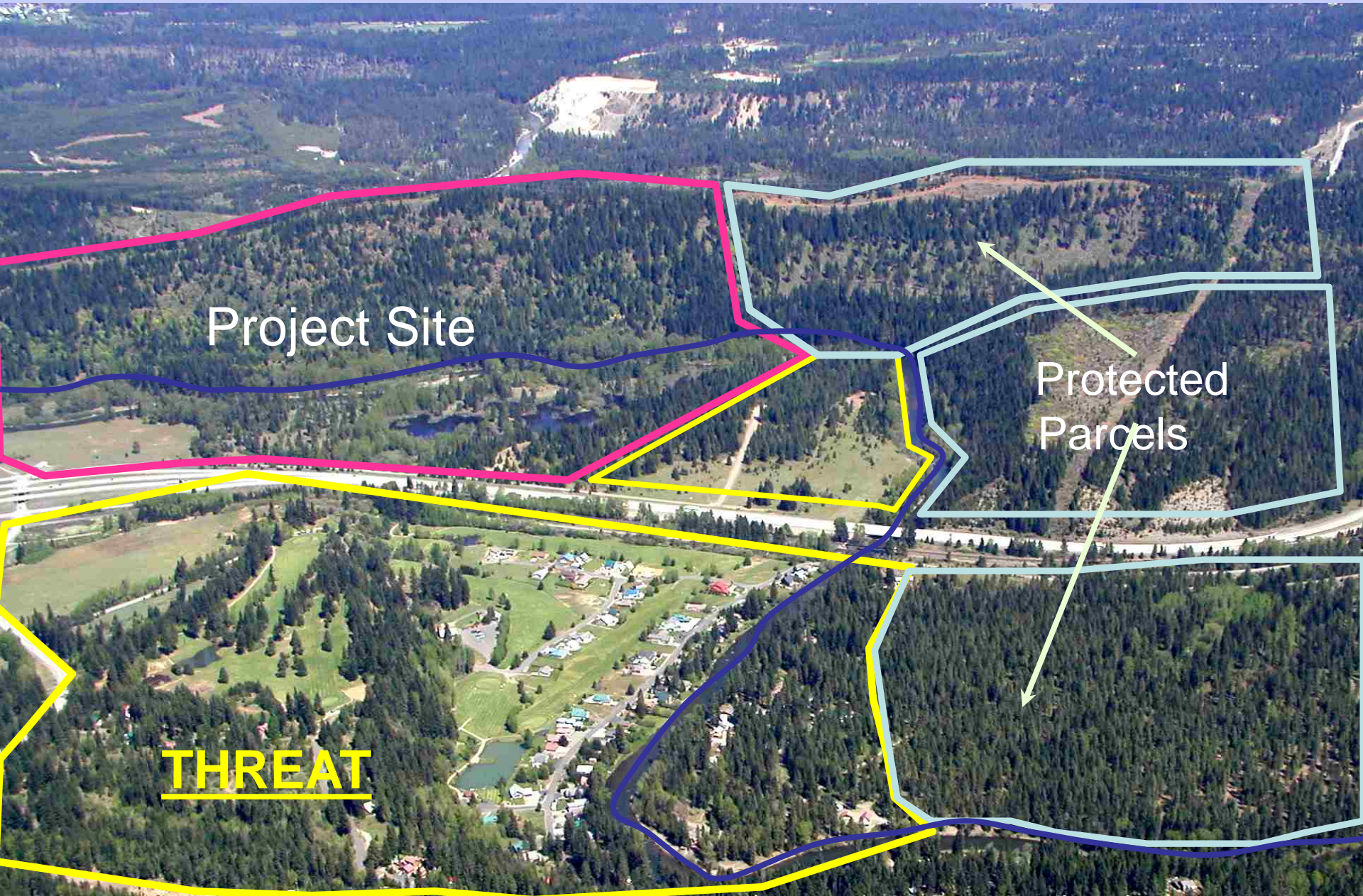
Clark Flat Site

Project Location

Dittman et al., 2002

Upper Yakima River Riparian - Project Area Map



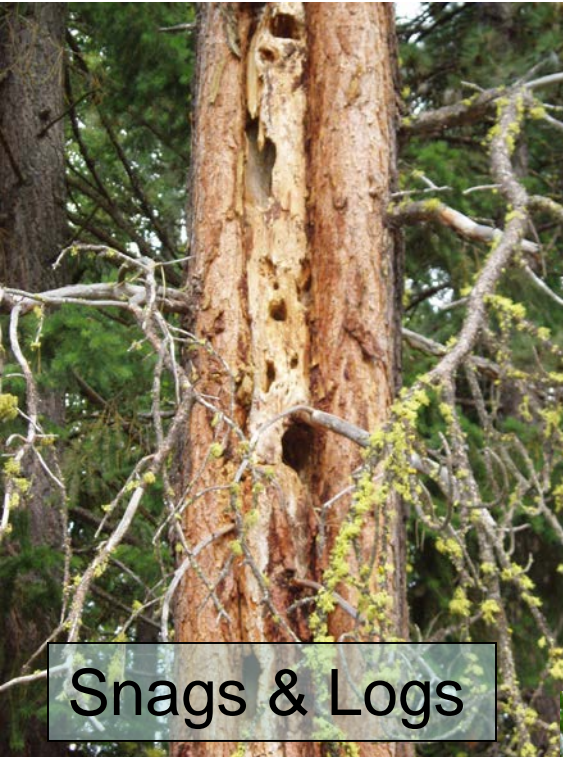


Project Site

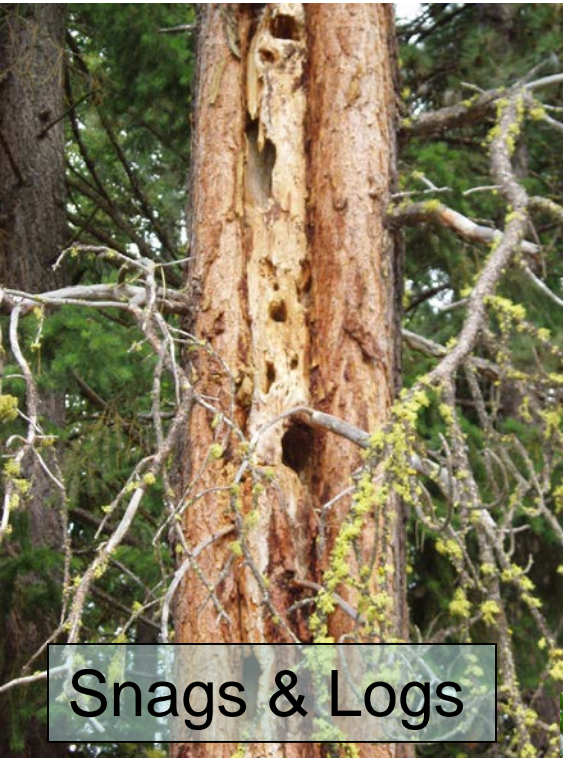
Protected
Parcels

THREAT

Riparian Habitat Types present



Riparian Habitat Types present



Riparian Habitat Benefits

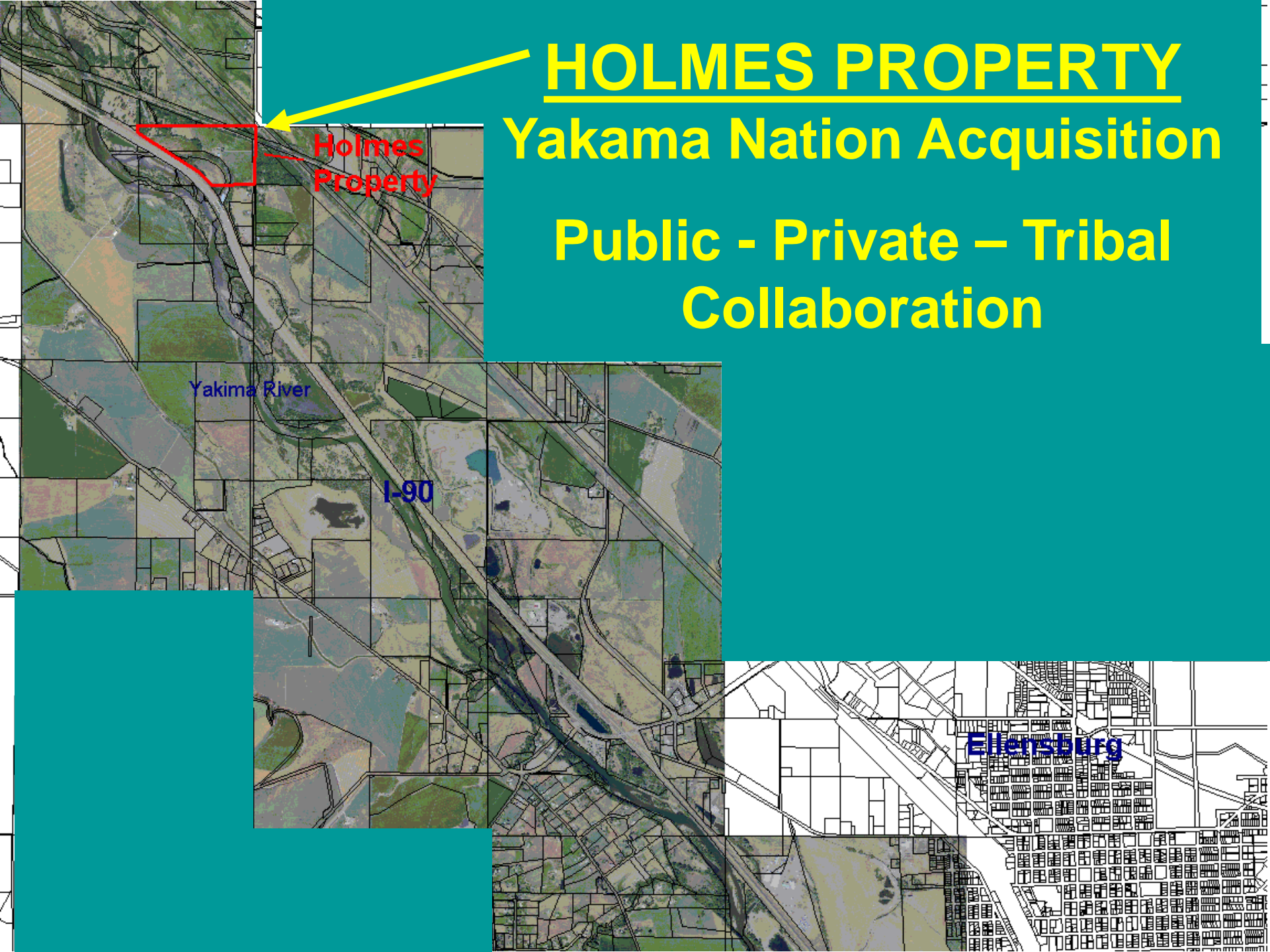


- Protects 1.5 miles of the Yakima River
- Property is characterized by ponds, wetlands and side channels

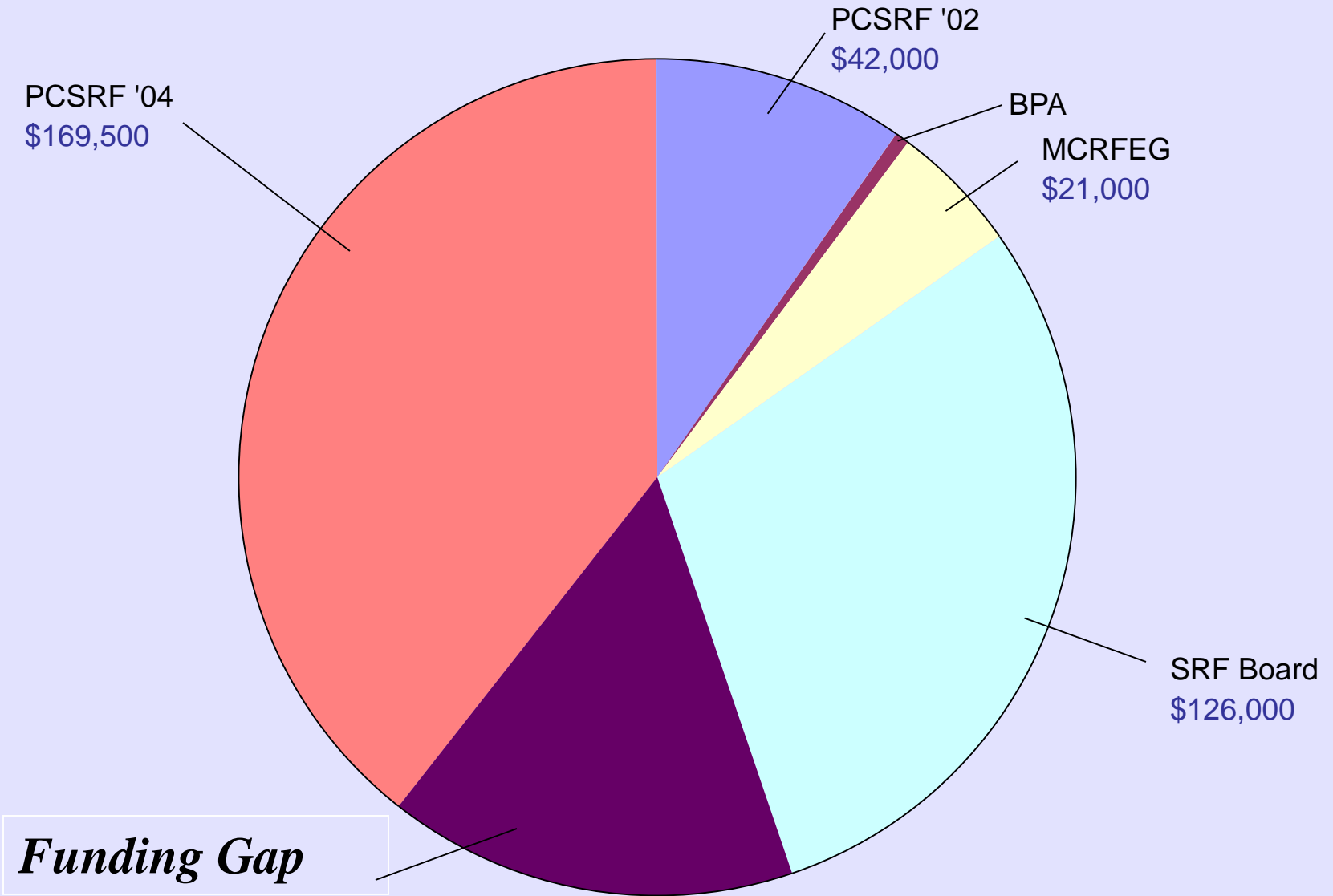
Priority Reaches



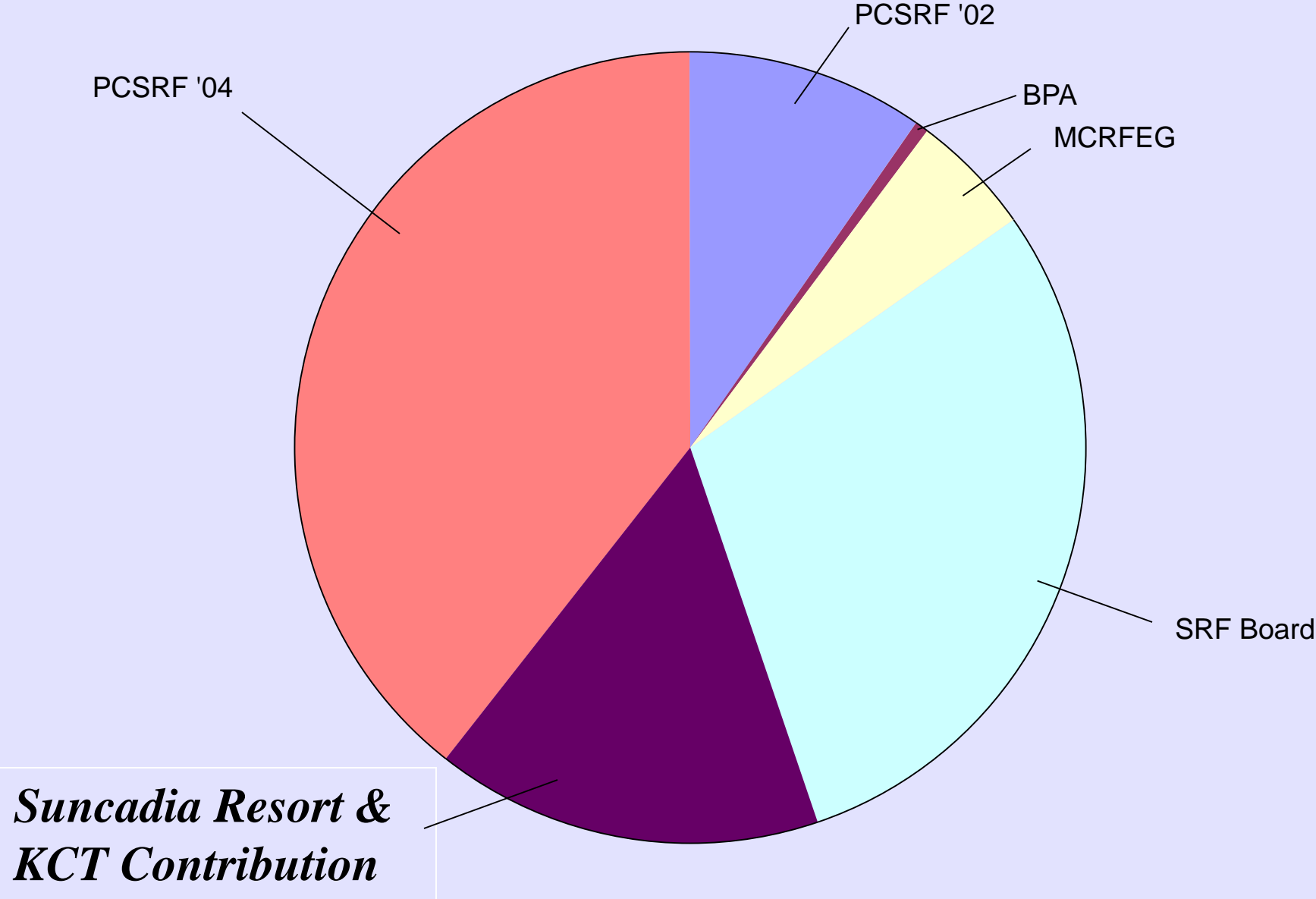
HOLMES PROPERTY Yakama Nation Acquisition Public - Private – Tribal Collaboration



Holmes – Acquisition Funding



Holmes – Acquisition Funding



Biological Justification

Biological Justification

- Improved side channel refugia

Holmes Property Floodplain Protection



Biological Justification

- Improved side channel refugia
 - Juvenile passage

Biological Justification

- Improved side channel refugia
 - Juvenile passage
 - Riparian conditions





Biological Justification

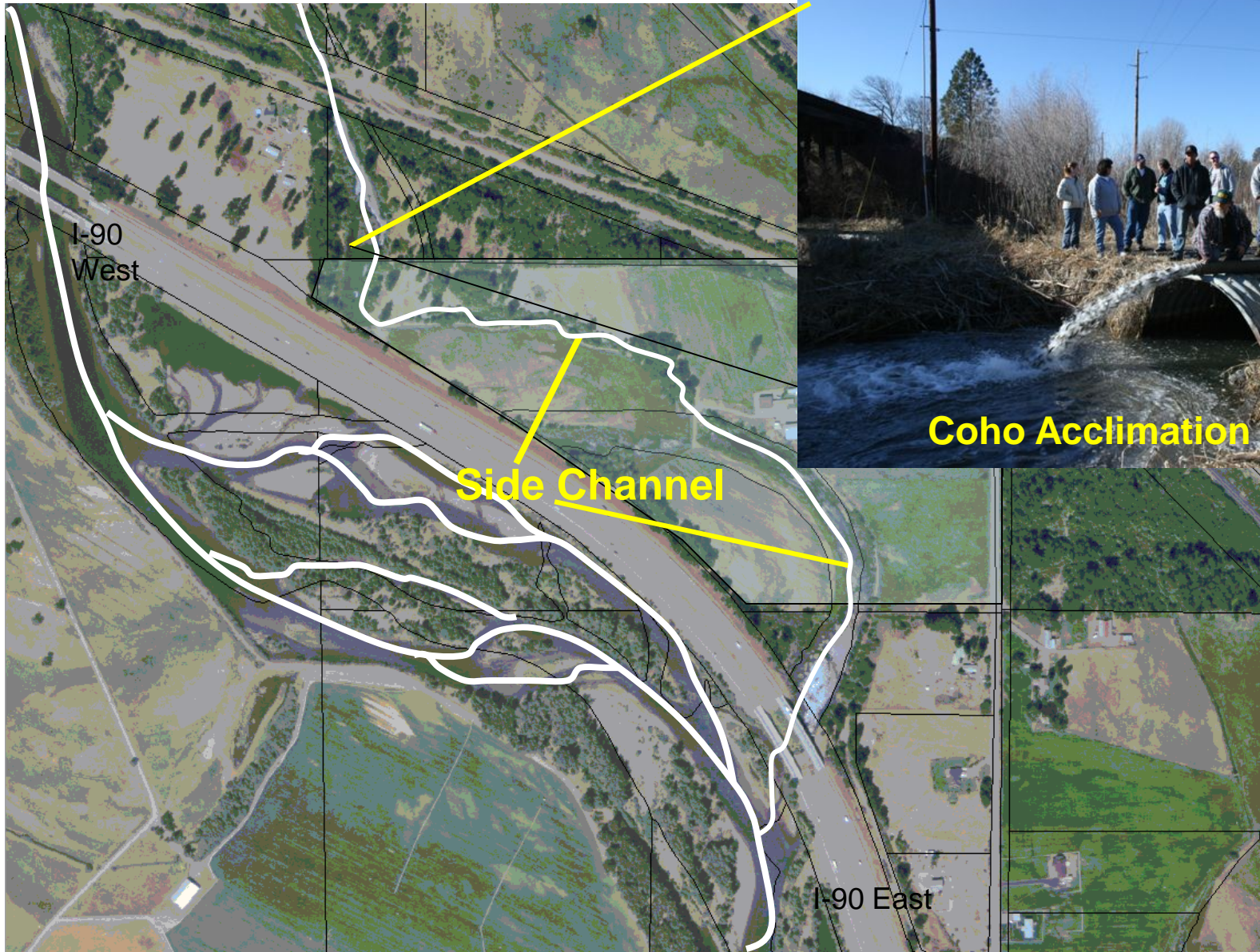
- Improved side channel refugia
 - Juvenile passage
 - Riparian conditions
 - Water quality



Biological Justification

- Improved side channel refugia
 - Juvenile passage
 - Riparian conditions
 - Water quality
 - Instream flow (water rights)

Holmes Property – Ellensburg Reach



Biological Justification

- Improved side channel refugia
 - Juvenile passage
 - Riparian conditions
 - Water quality
 - Instream flow
 - Coho salmon re-introduction



Salmon in the Classroom



PUBLIC – PRIVATE – TRIBAL

Fostering Successful Collaborations

