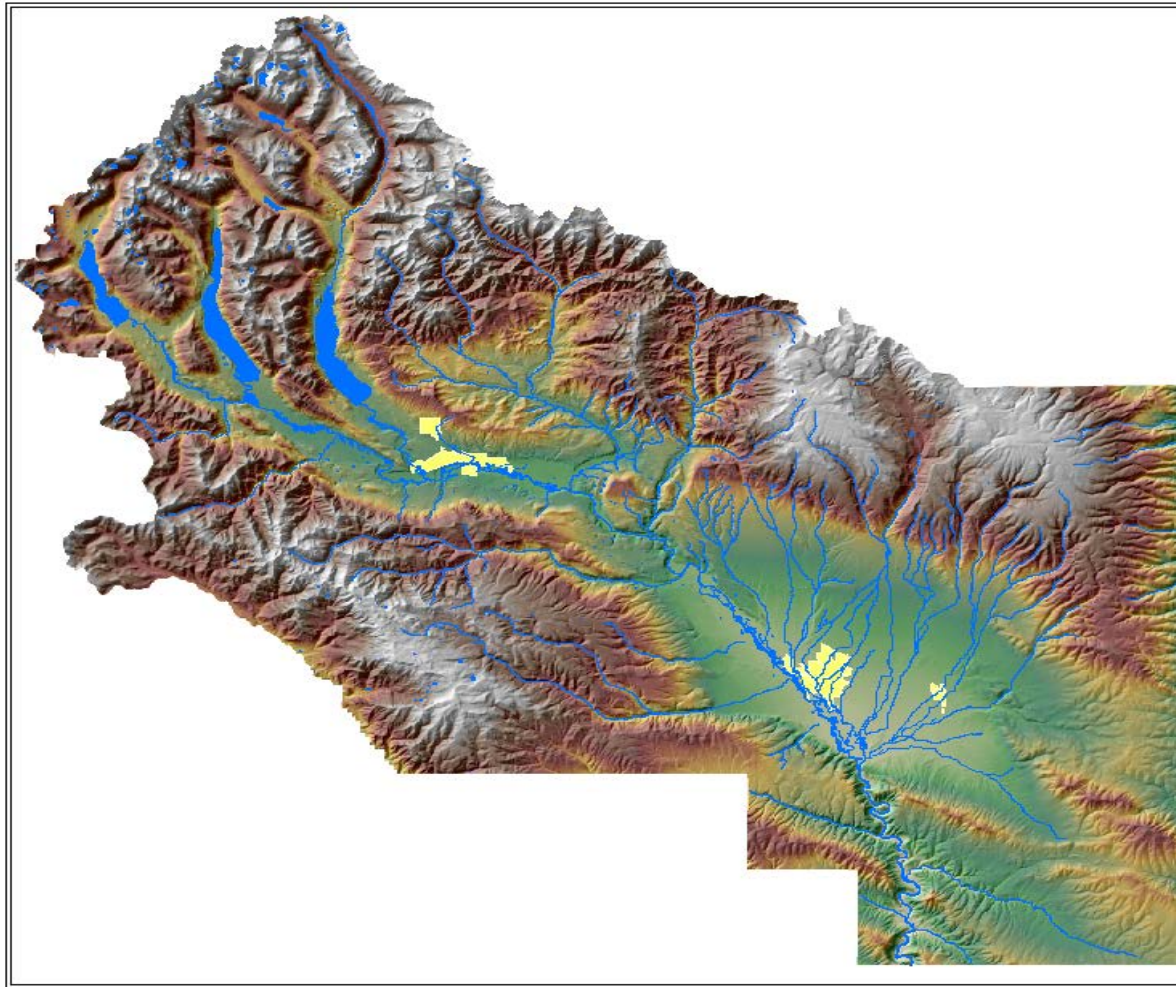




Protect and enhance fish and wildlife habitat, open space, scenic viewscapes and recreational assets in the Upper Yakima River Basin.

UPPER YAKIMA RIVER BASIN



Goals and Objectives:

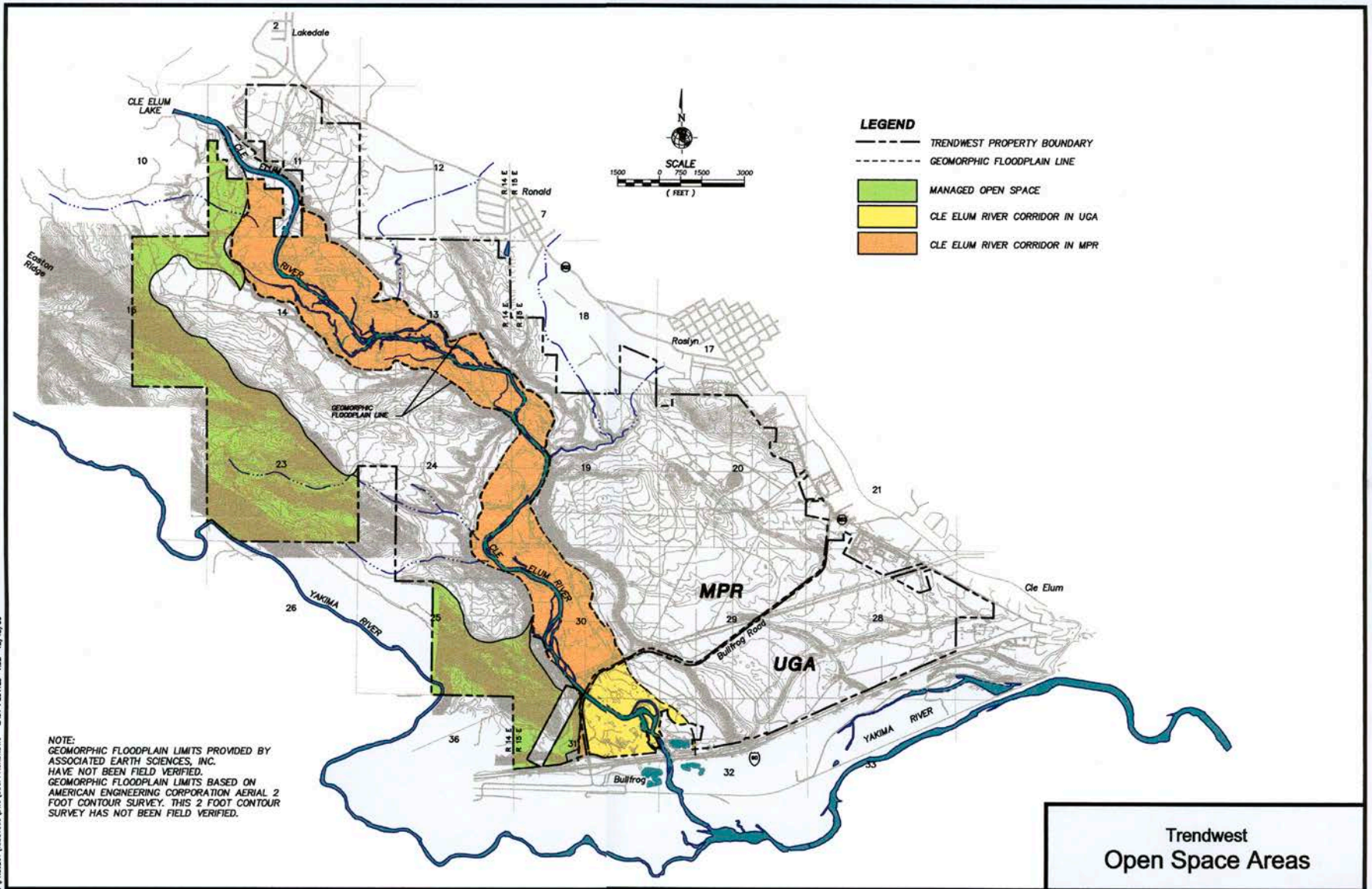
- Acquire real property and own conservation easements for the purposes of retaining and restoring healthy aquatic and upland ecosystems.
- Acquire water rights to increase instream flows for the benefit of aquatic resources, especially anadromous fish, in the Upper Yakima River Basin.
- Develop educational and interpretive programs that foster awareness of the value of a healthy ecosystem that supports abundant stocks of fish and wildlife.
- Prioritize the acquisition and protection of riparian property and the associated floodplain that contributes to the health of the ecosystem.

SUNCADIA RESORT CONSERVATION EASEMENTS



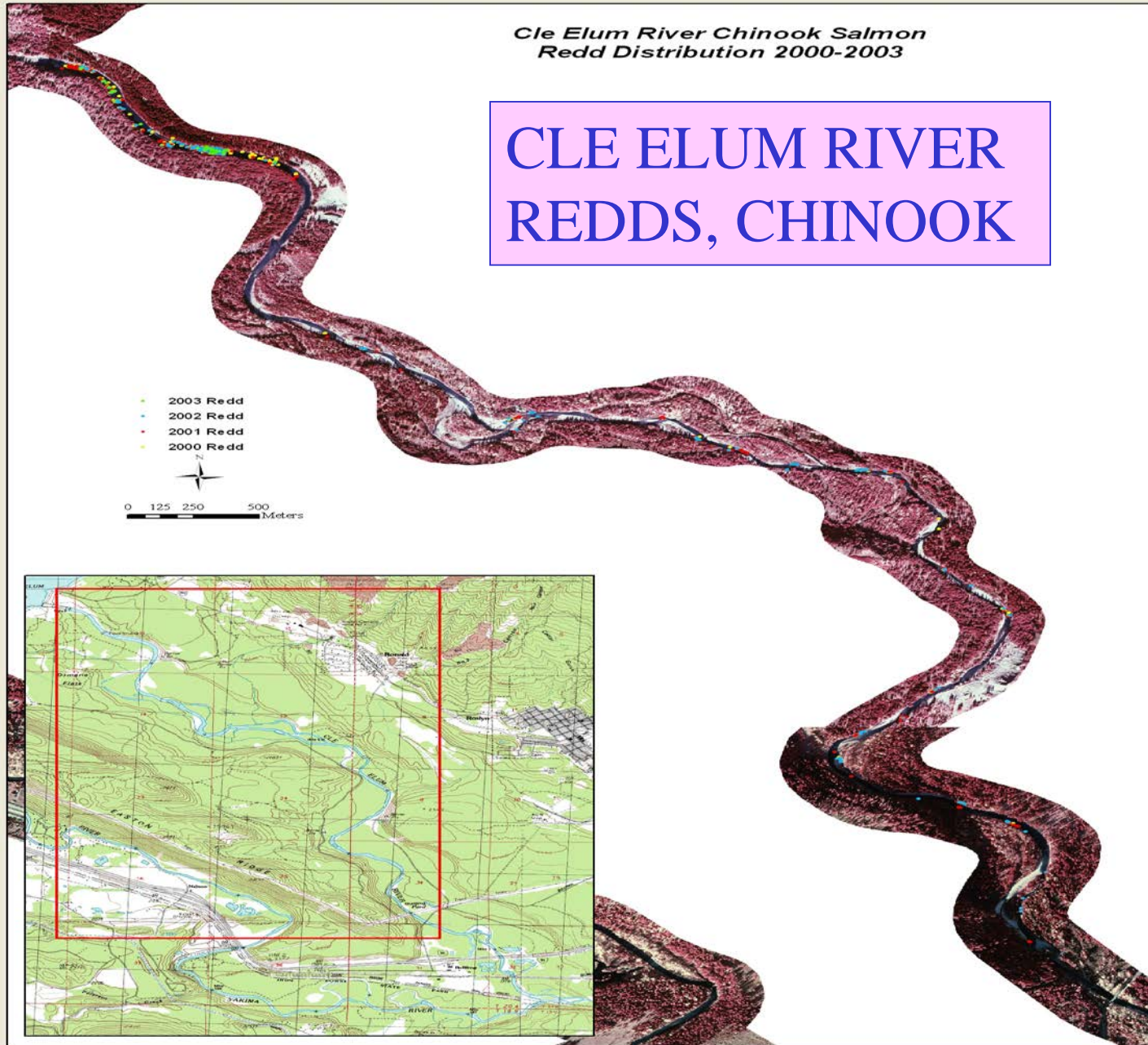
- CLE ELUM RIVER CORRIDOR
- MANAGED OPEN SPACE
- NATURAL OPEN SPACE
- STREAM “C”

Trendwest Protected Open Space Areas

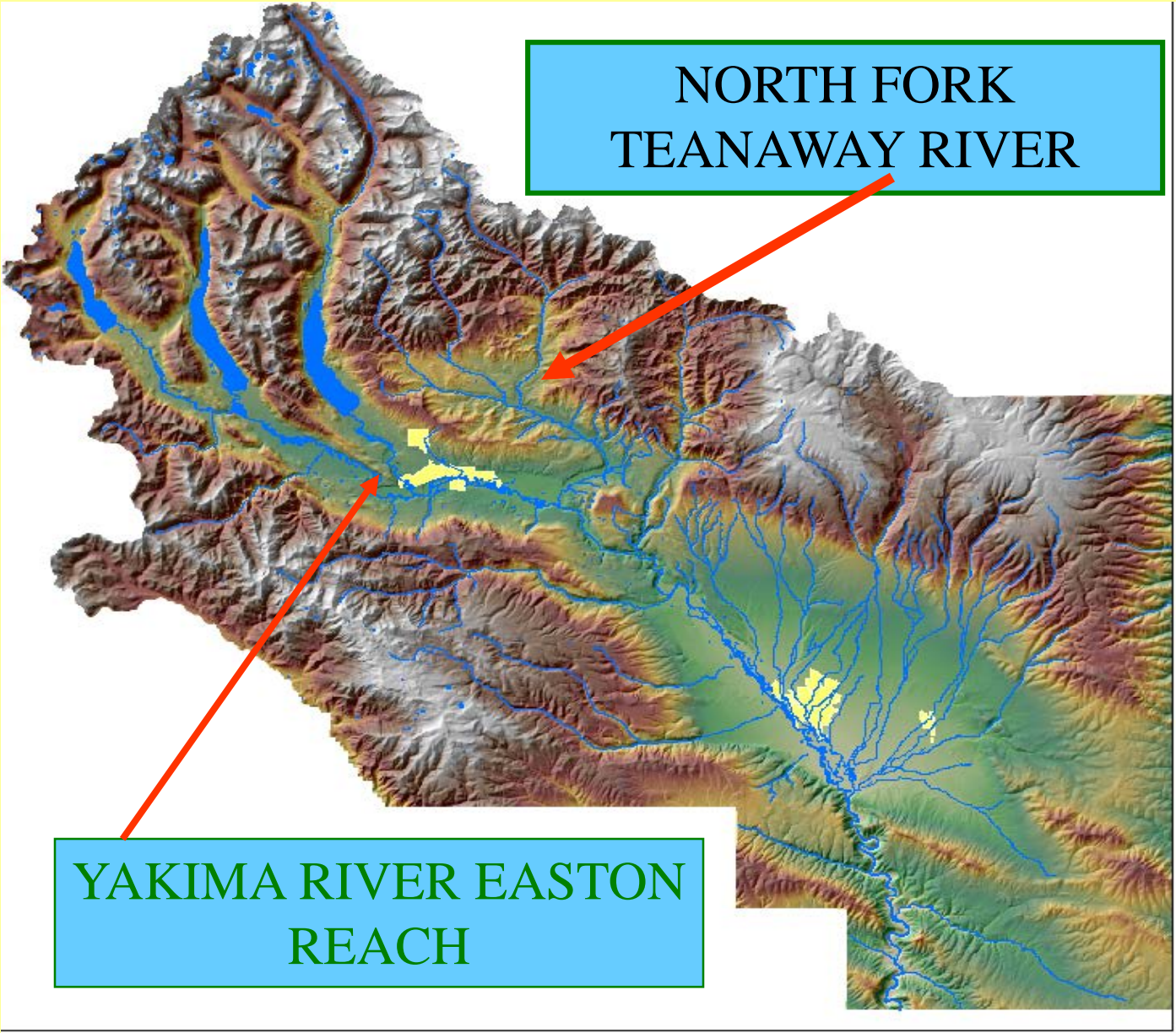


*Cle Elum River Chinook Salmon
Redd Distribution 2000-2003*

CLE ELUM RIVER REDDS, CHINOOK



SALMON RECOVERY ACQUISITION PROJECTS



NORTH FORK
TEANAWAY RIVER

YAKIMA RIVER EASTON
REACH

LUMSDEN PROPERTY 24 RIPARIAN ACRES YAKIMA RIVER FLOOD PLAIN



- Keystone parcel in a broad protection strategy near the confluence of the Cle Elum and Yakima Rivers
- 50% of immigrating Spring Chinook in the entire Yakima Basin pass through this reach
- Mature riparian forest
- Large woody debris

NORTH FORK TEANAWAY RIVER

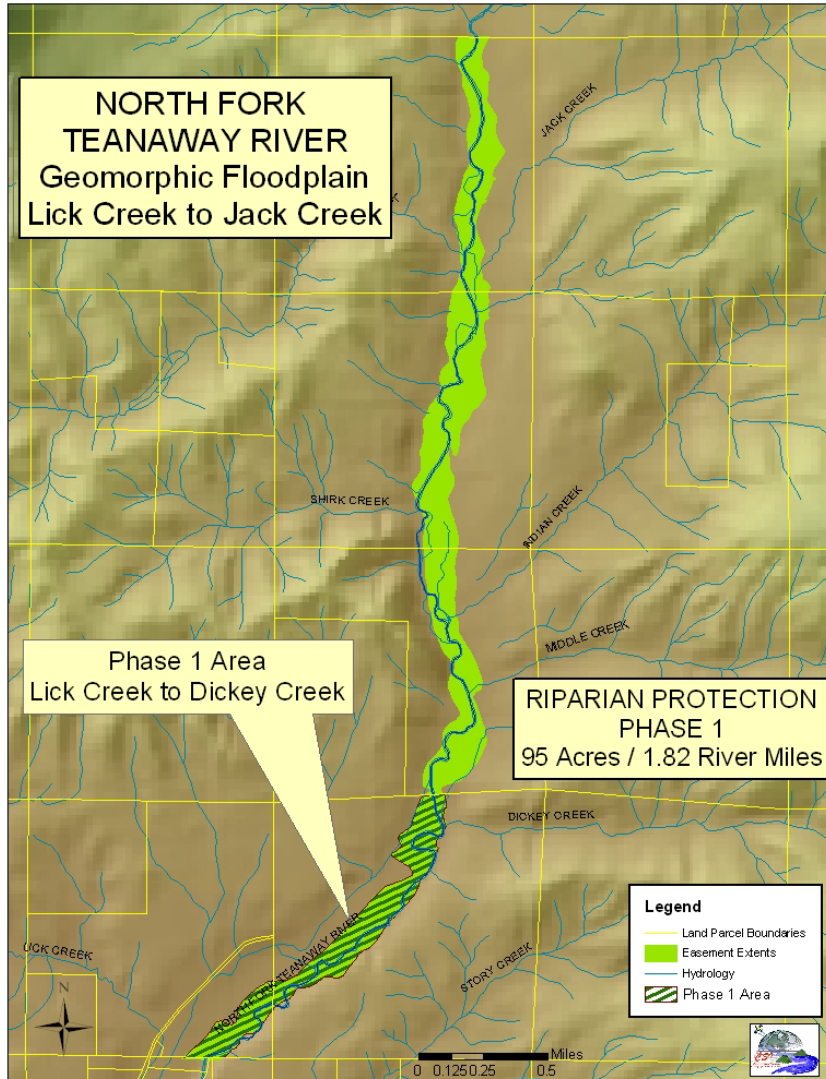
Naturally flowing tributary to the Yakima River

Spring Chinook spawning, resident Bull trout, Steelhead Habitat



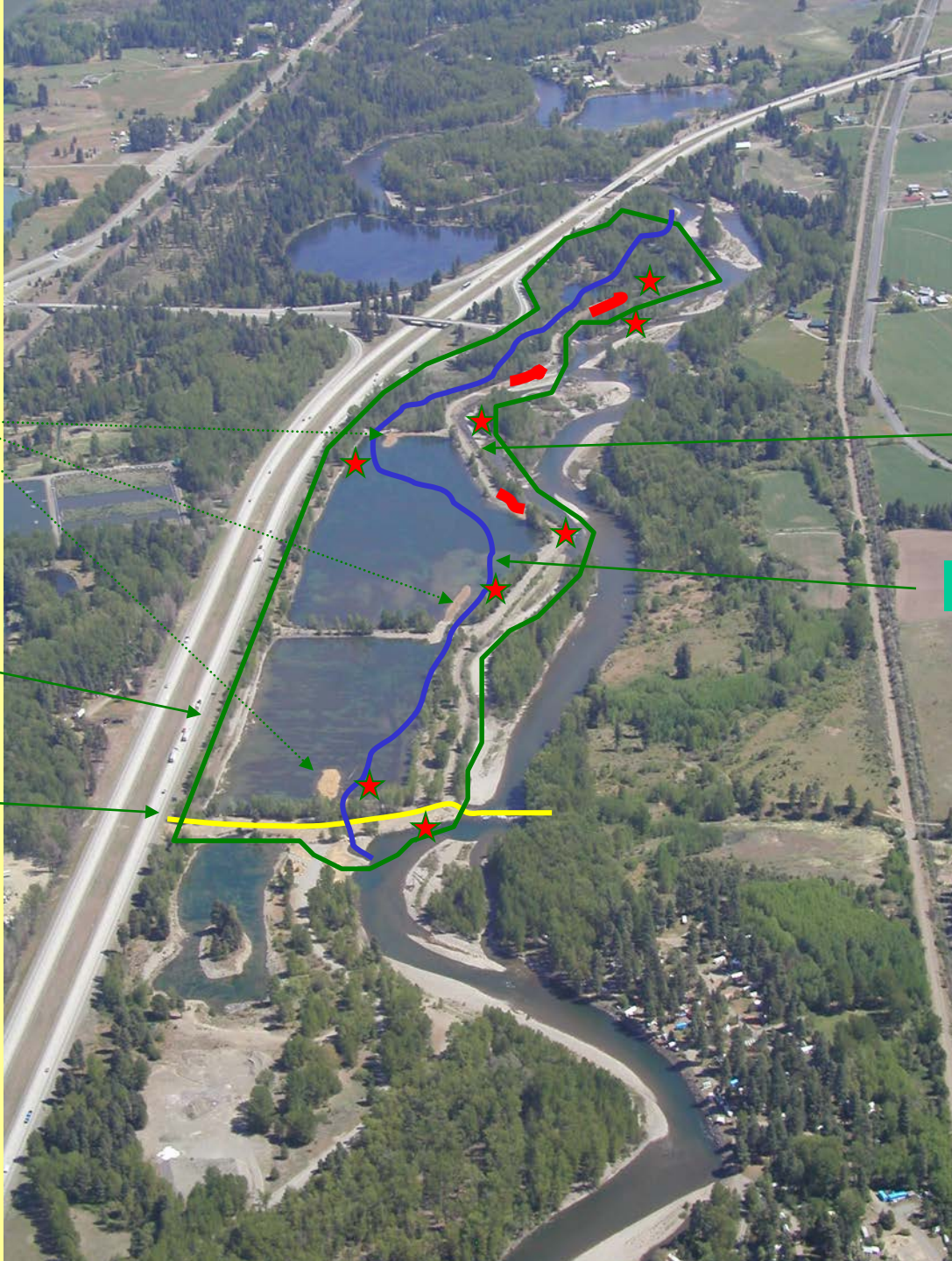
PHASE ONE CONSERVATION EASEMENT

~ 100 Acres Floodplain, American Forest Resources



- Salmon Recovery Funding Board 2004
- First Phase of Habitat Protection Proposal for North Fork Teanaway lands to Jack Creek
- Proposed protection from rural residential and recreational development

Hanson Ponds Project Elements



Wetland Peninsulas

Project Area

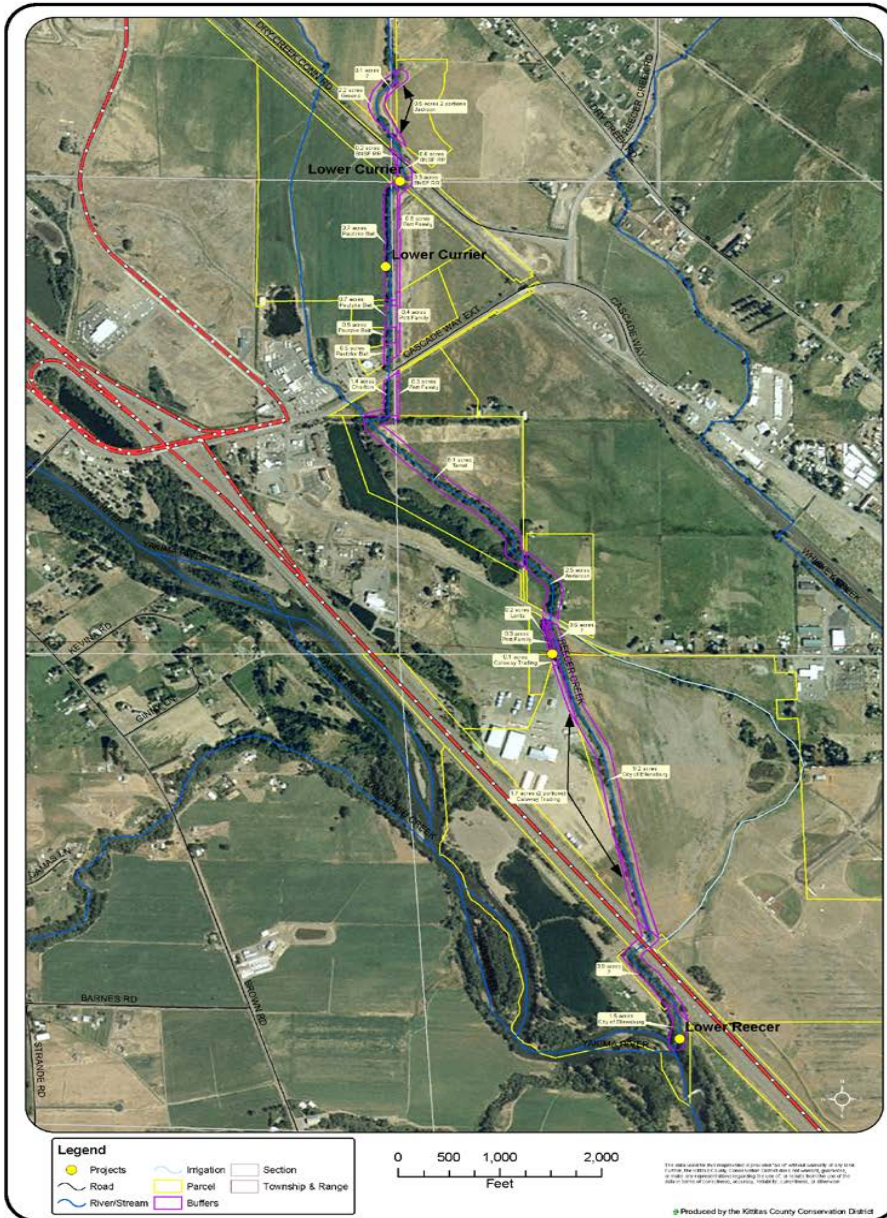
Main Drop & Pipe Installation

Abandoned Road with Levee Breaches

Connected Side Channel

★ Large Woody Debris Locations

REECER & LOWER CURRIER CREEK PASSAGE PROJECT



- Four fish barriers proposed to be removed from the stream creating passage to four miles of tributary habitat
- Proposed 75 foot riparian buffer conservation easements
- Possible linkage of easements to create trail/bikeway from Yakima River to John Wayne Trail

Flo & Moe say “Thanks for your work”

