



Science and Management Conference

June 14, 2007

Presented by
Yakima County
Flood Control Zone District
Surface Water Management Division
Yakima County Public Services

Major Alluvial Floodplains of the Yakima Basin

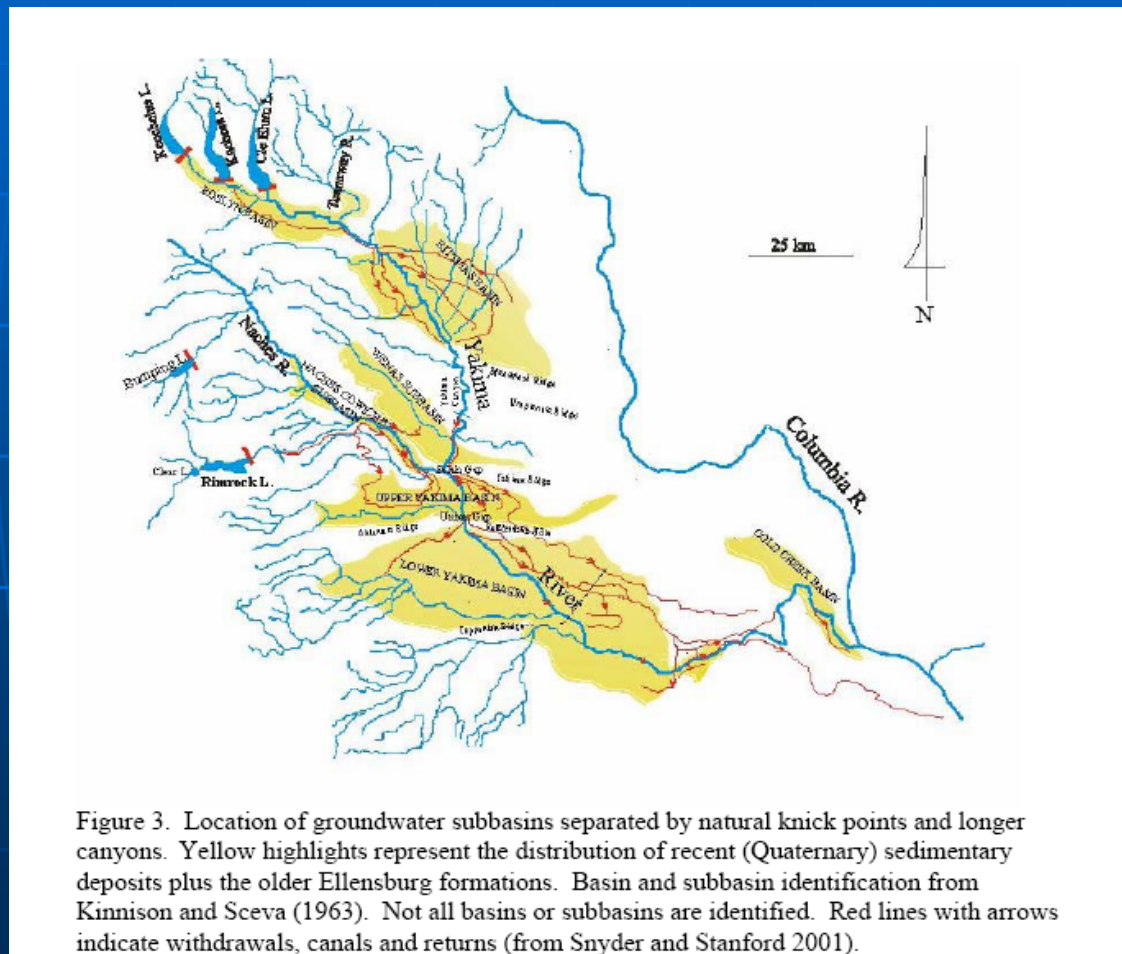
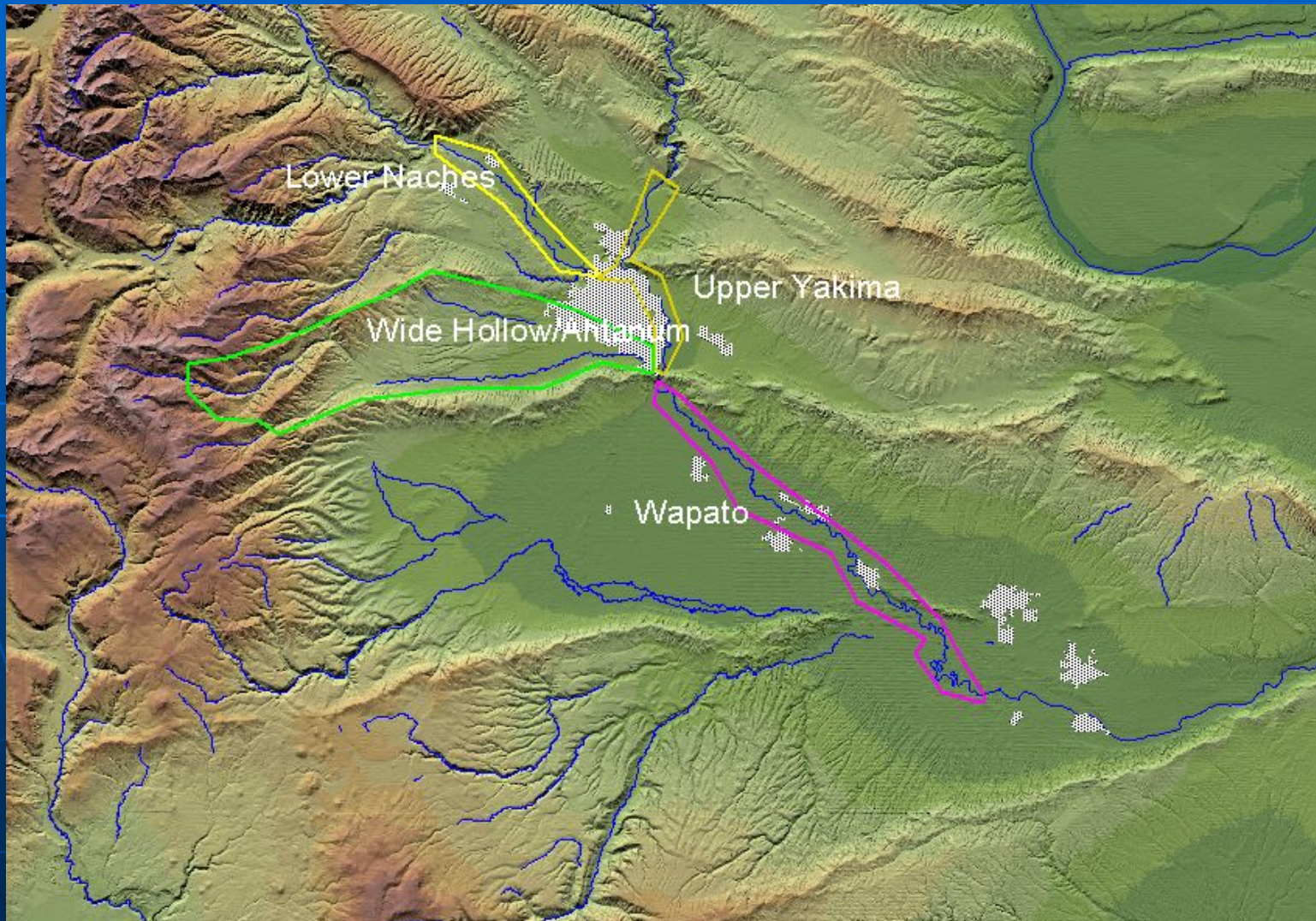


Figure 3. Location of groundwater subbasins separated by natural knick points and longer canyons. Yellow highlights represent the distribution of recent (Quaternary) sedimentary deposits plus the older Ellensburg formations. Basin and subbasin identification from Kinnison and Sceva (1963). Not all basins or subbasins are identified. Red lines with arrows indicate withdrawals, canals and returns (from Snyder and Stanford 2001).

Comprehensive Flood Hazard Management Plans



What all is in a CFHMP?

- Non-Structural Recommendations

 - Mapping/Modeling other Studies

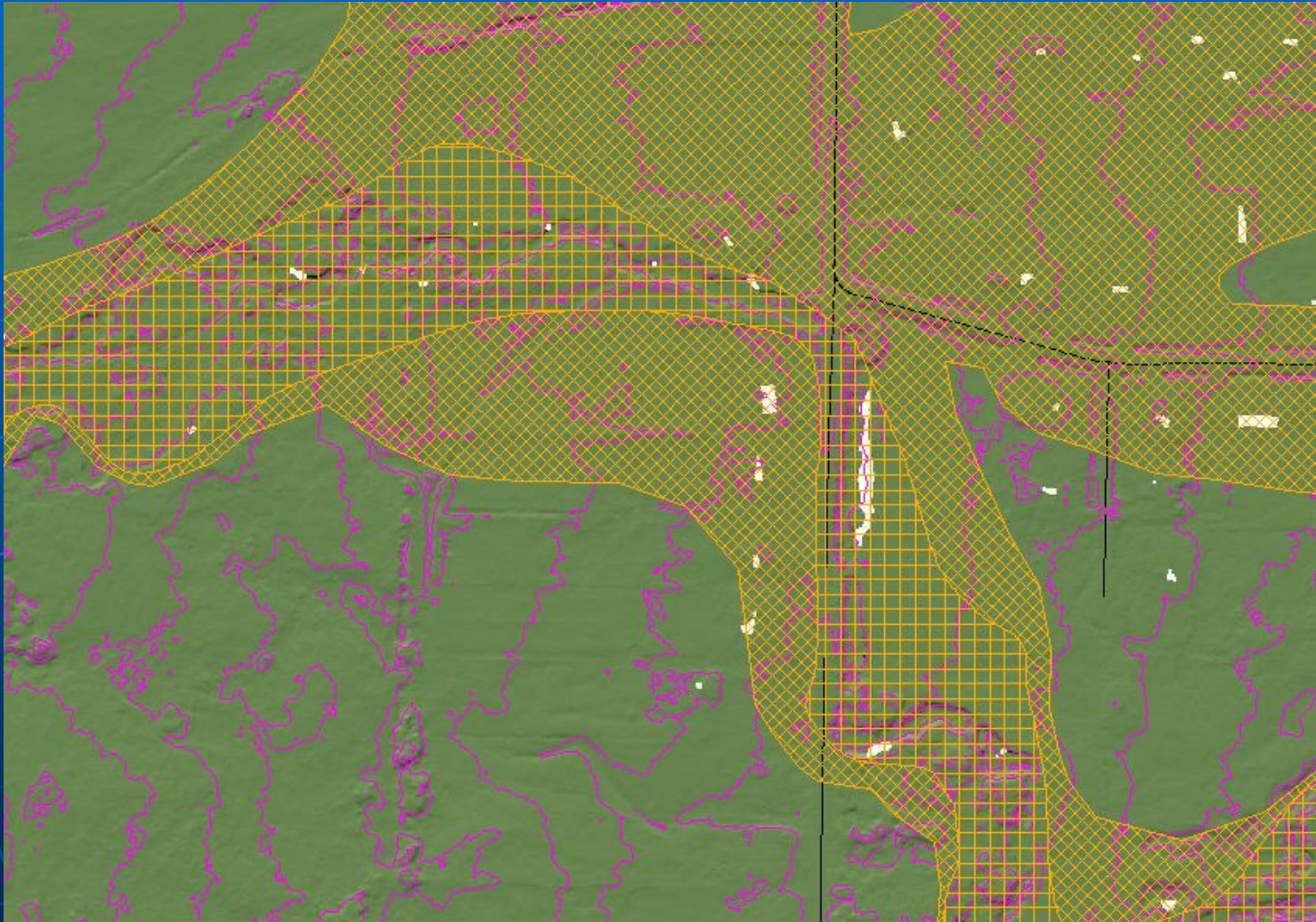
 - Changes in Land Use, Suggested
Future Land Use

- Structural Recommendations

 - Alterations to Levees, Roads,
Diversions

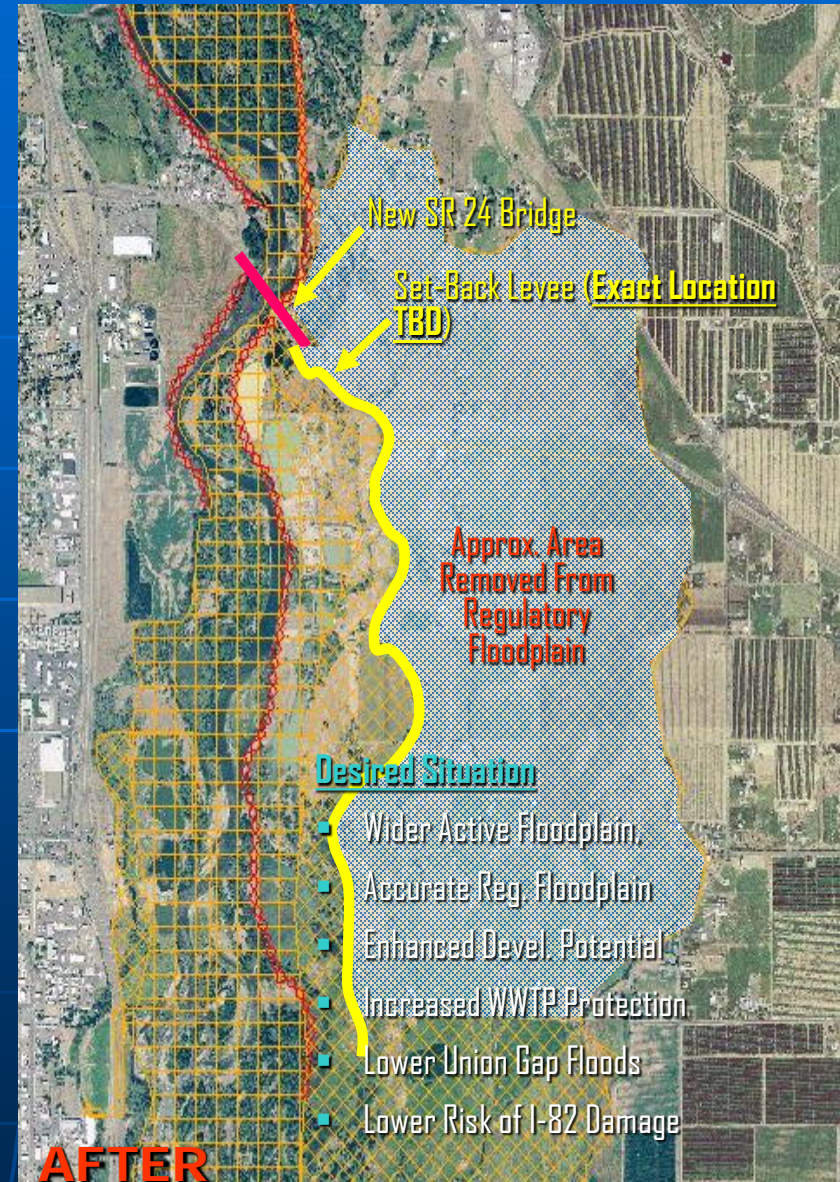
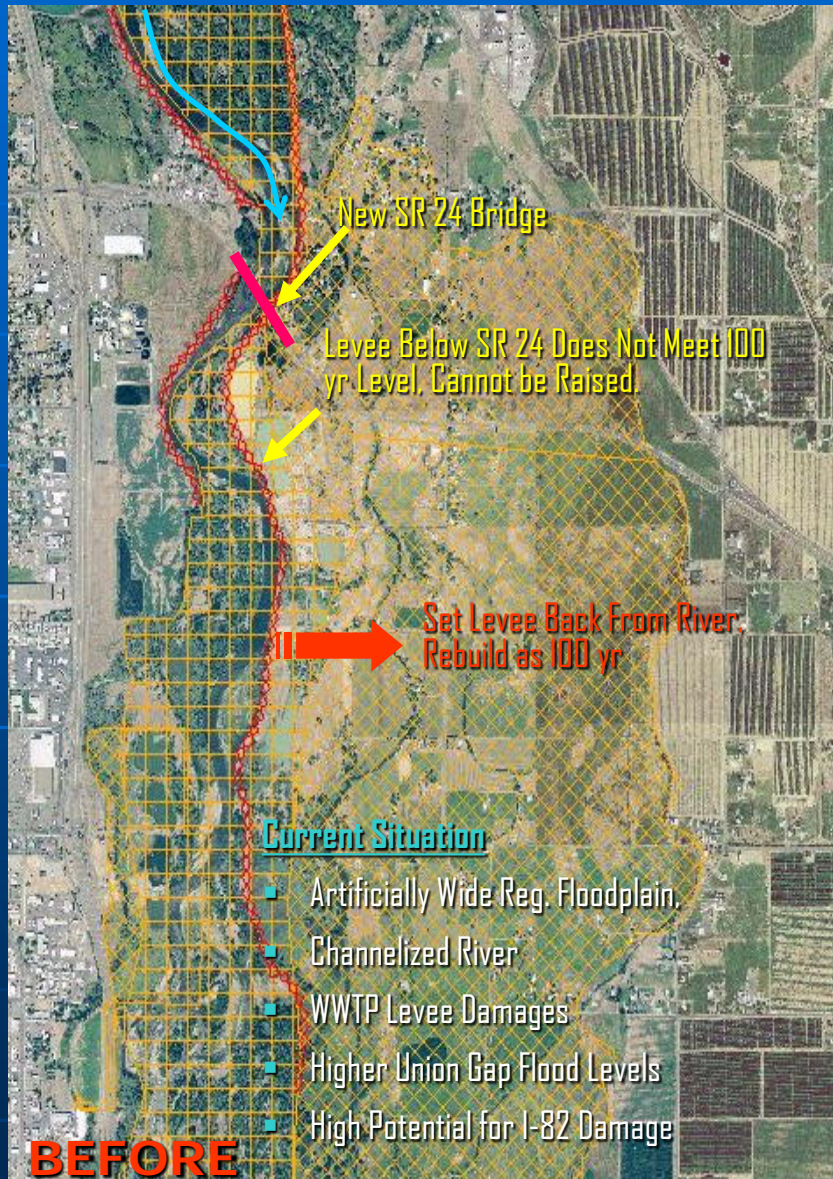
 - Maintain Riverine Function

Floodplain Mapping






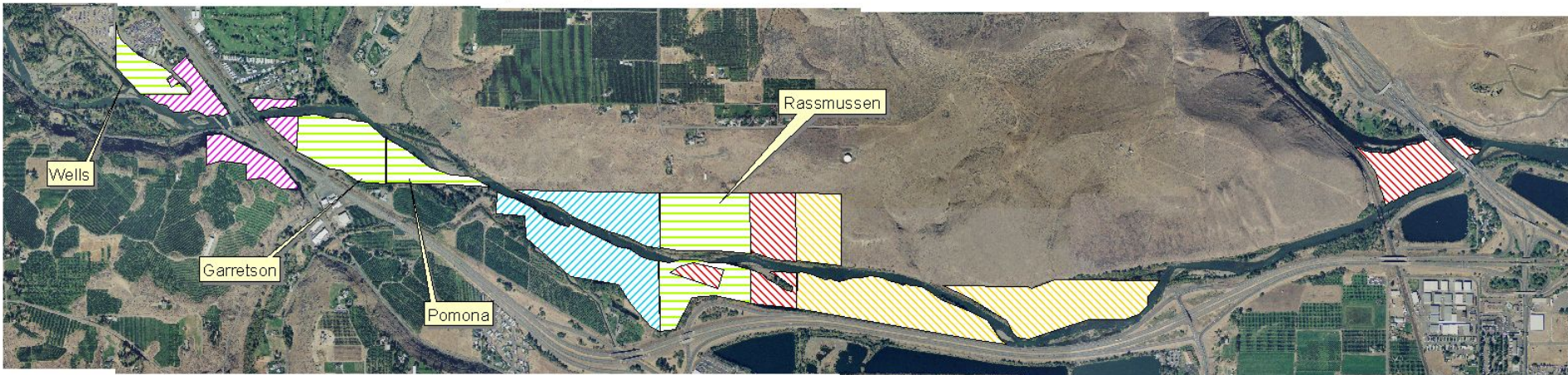
Important Near Term Actions

#1 - Levee Set-Back Below SR 24, East Side of River



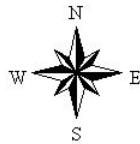
Legend

-  Properties currently owned by WSDOT
-  Property to be acquired by WSDOT
-  Properties currently owned by Yakima County
-  Properties currently owned by City of Yakima
-  Properties to be acquired in SRFB Grant

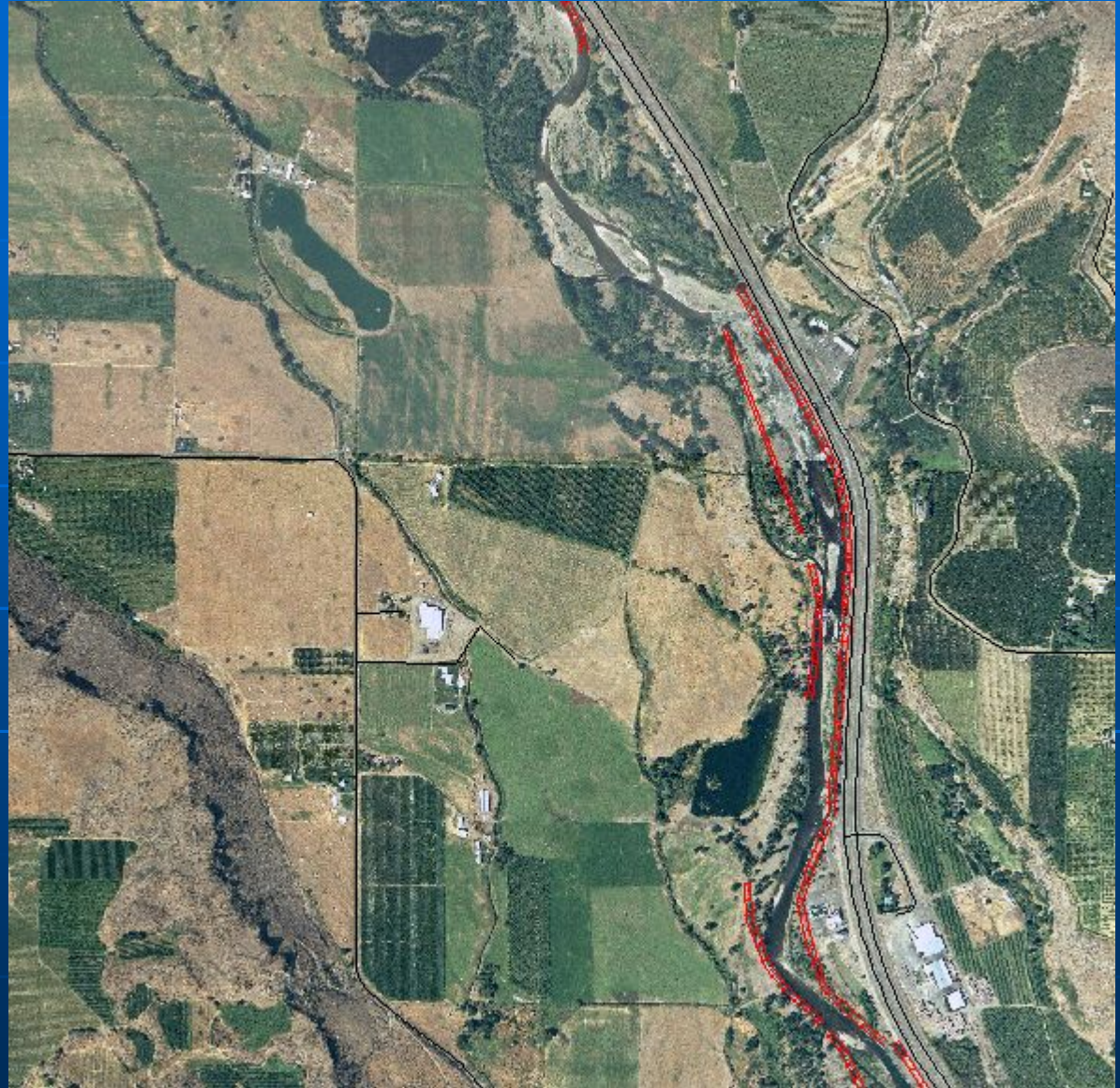


Naches River Floodplain Acquisition Map

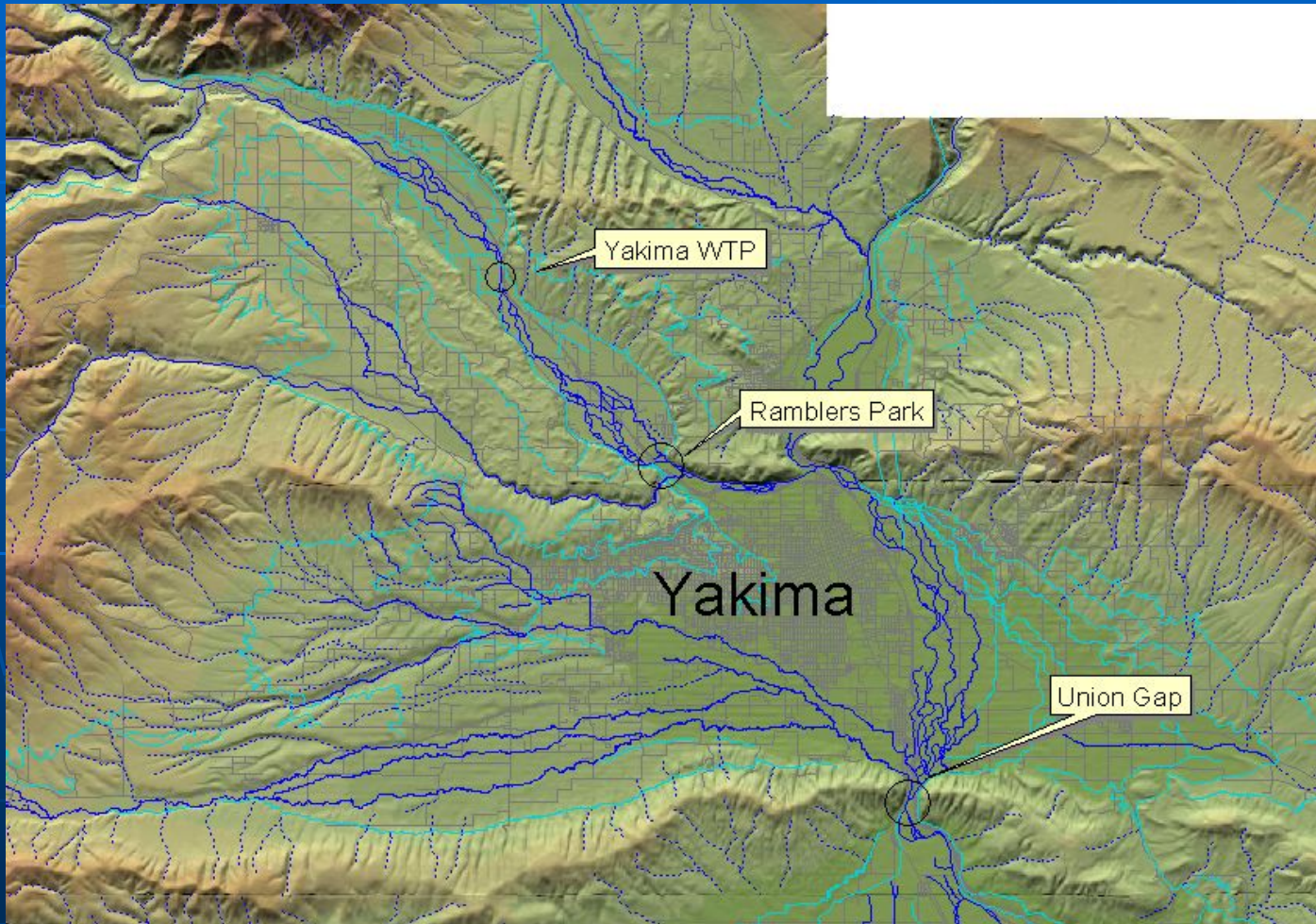
2000 0 2000 4000 Feet



Yakima Water Treatment Plant Reach Analysis



Connections Between Alluvial Floodplains



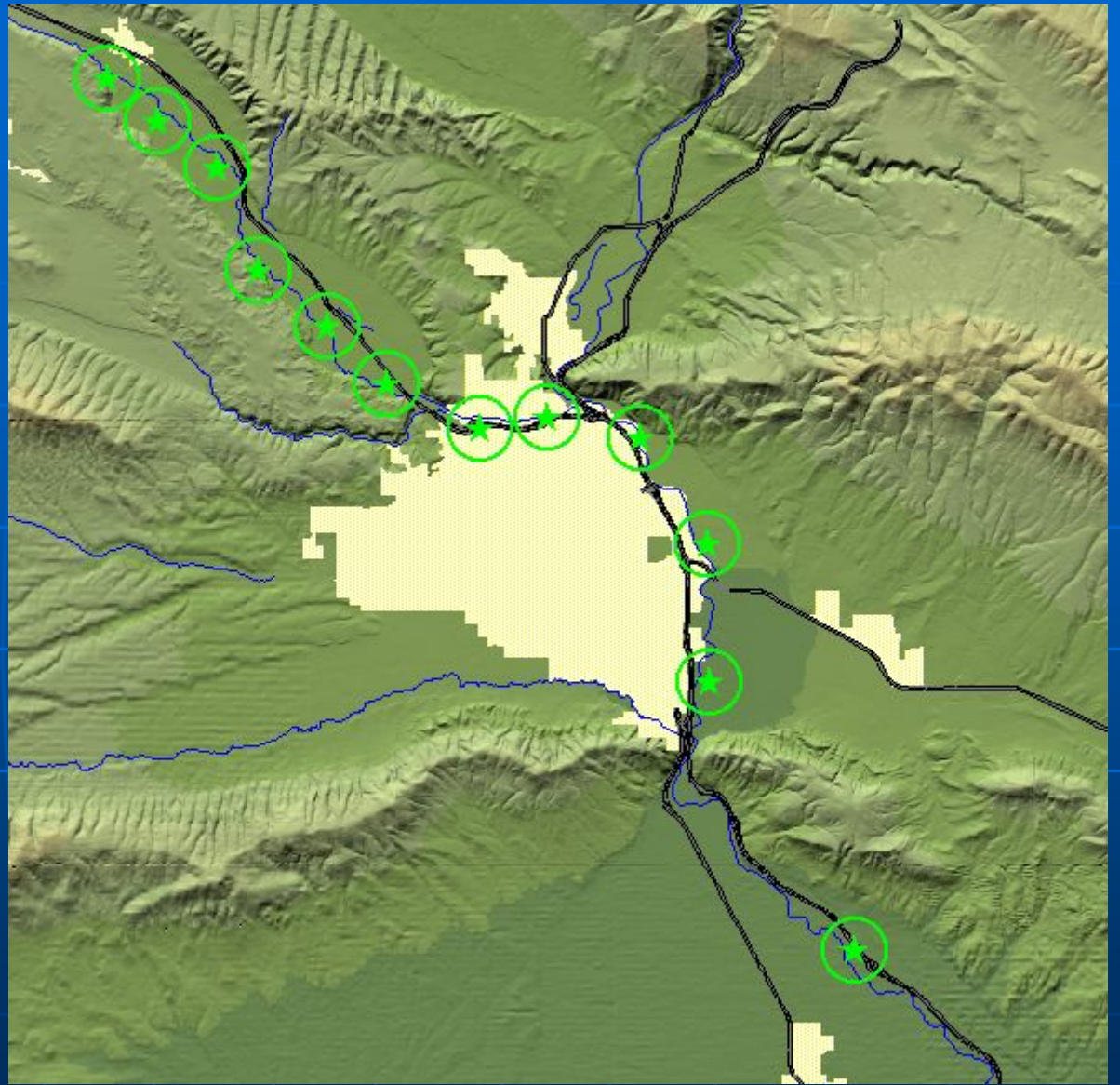
Ponderosa Pine Project



Ponderosa Pine Project



Ponderosa Pine Planting Sites



Questions and Discussion

