



Science and Management Conference

June 12, 2008

Presented by
Yakima County
Flood Control Zone District
Surface Water Management Division
Yakima County Public Services

Major Alluvial Floodplains of the Yakima Basin

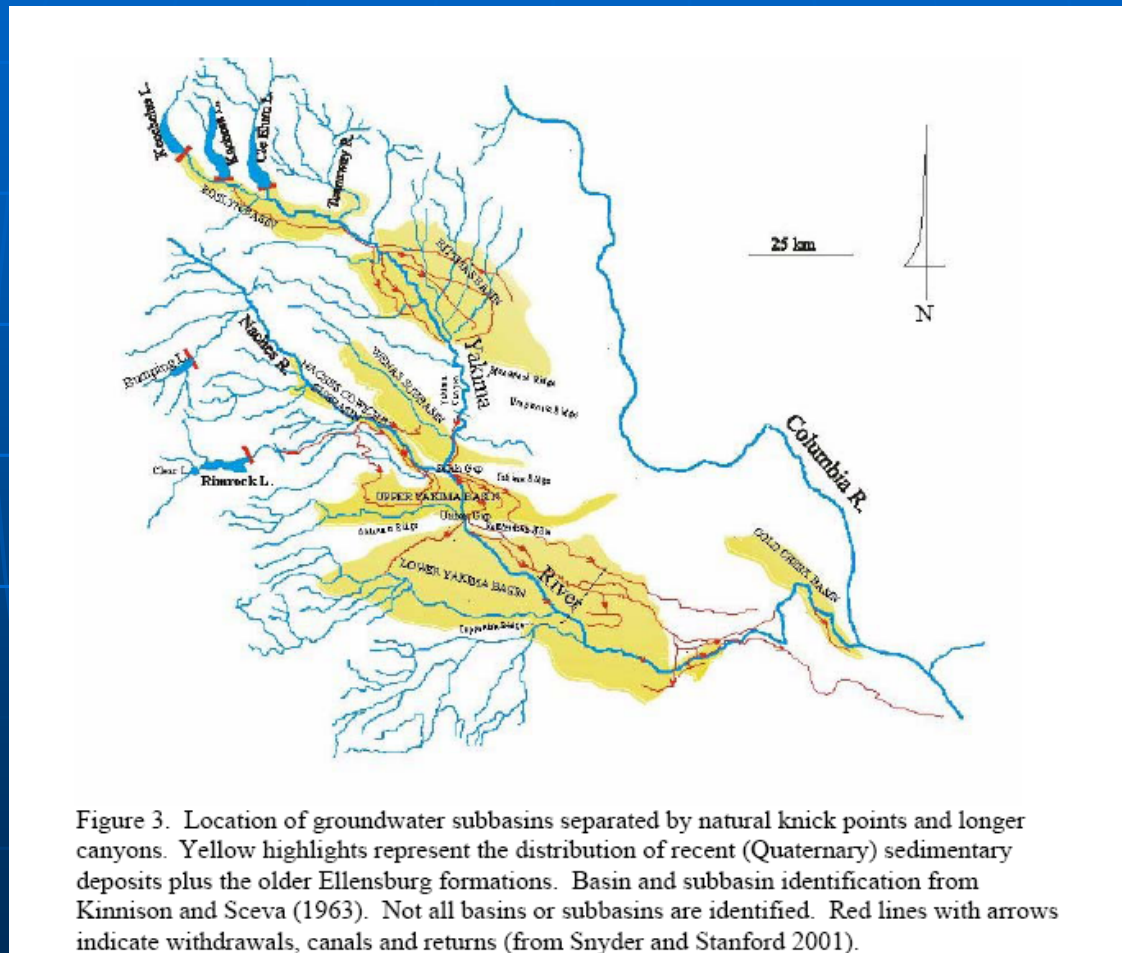
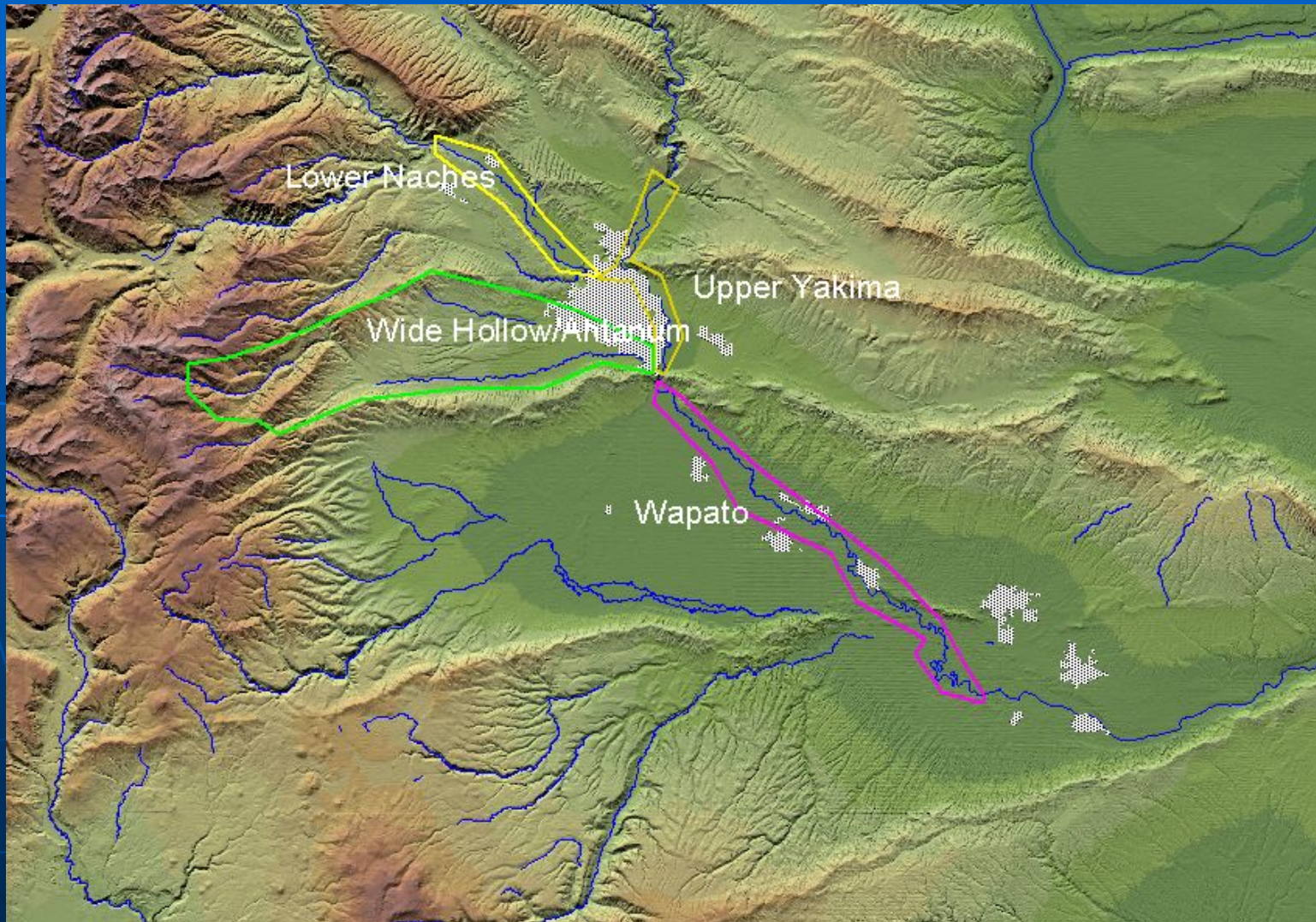


Figure 3. Location of groundwater subbasins separated by natural knick points and longer canyons. Yellow highlights represent the distribution of recent (Quaternary) sedimentary deposits plus the older Ellensburg formations. Basin and subbasin identification from Kinnison and Sceva (1963). Not all basins or subbasins are identified. Red lines with arrows indicate withdrawals, canals and returns (from Snyder and Stanford 2001).

Comprehensive Flood Hazard Management Plans



What all is in a CFHMP?

- Non-Structural Recommendations

 - Mapping/Modeling other Studies

 - Changes in Land Use, Suggested
Future Land Use

- Structural Recommendations

 - Alterations to Levees, Roads,
Diversions

 - Maintain Riverine Function

Floodplain Mapping

Lower Naches

Completed and Under FEMA review,
due in October for Public Comment

Ahtanum

Hydrology completed (Basically
Unchanged) due in October

Wide Hollow

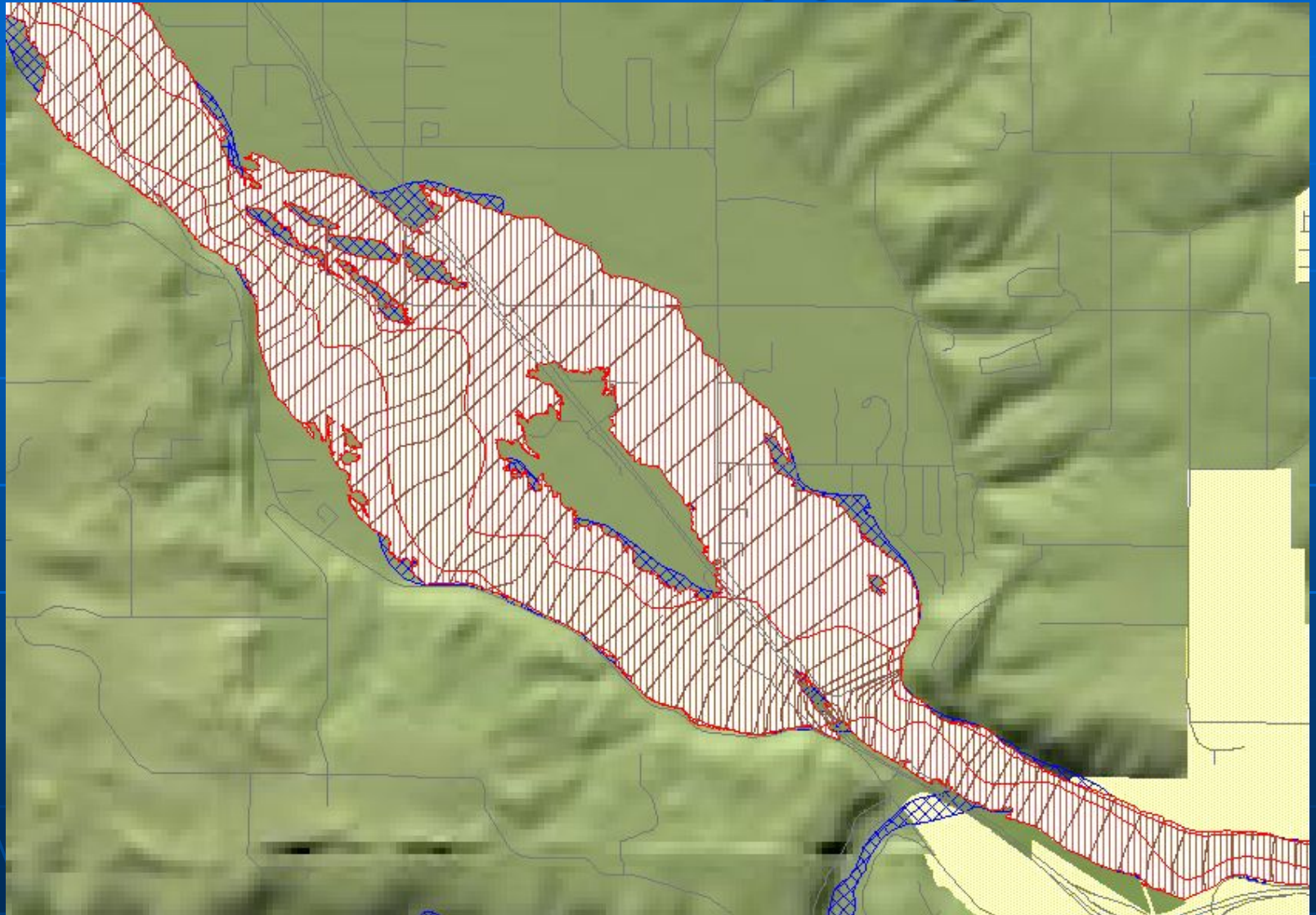
Hydrology Completed (30% increase)
Due in October 2009

Floodplain Mapping



Naches River at the Y

Floodplain Mapping



Naches River at Glead/Nelson Dam

Selected Capital Projects

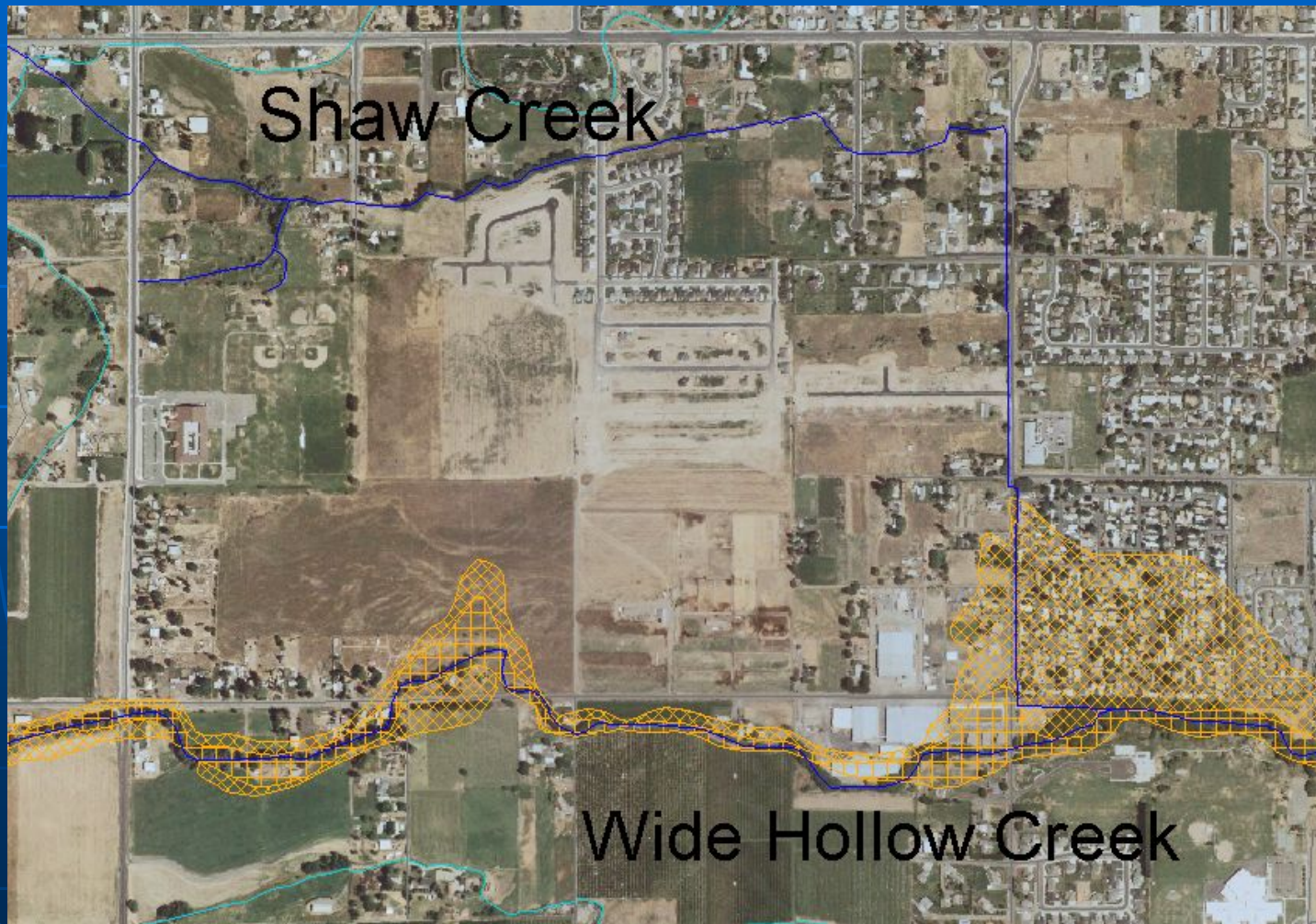
Staying ahead of Development

1. Cowiche Creek/Fruitvale
2. Shaw Creek
3. Ahtanum @ 42nd

Cowiche Cr./Fruitvale Diversion



Shaw Creek

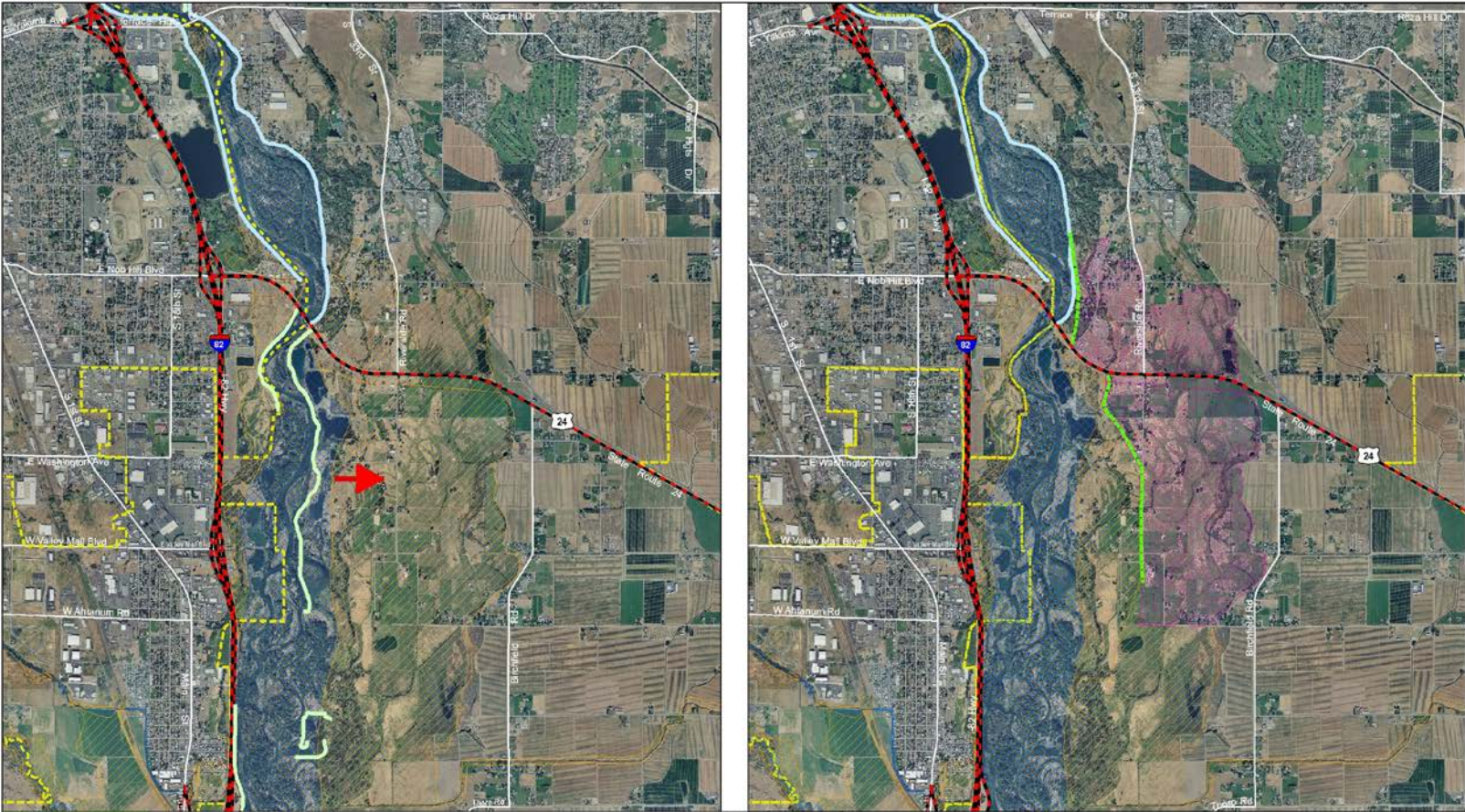


Ahtanum @ 42nd



Gap to Gap Levee Relocation and Floodplain Restoration

Levee Set-Back Below SR 24, East Side of River



YAKIMA COUNTY
 GEOGRAPHIC INFORMATION SERVICES

Placed Lot lines are for visual display only. Do not use for legal transactions.

Copyright © 2008 Yakima County. This map was derived from various databases. The County cannot accept responsibility for any errors. Therefore, there are no warranties for this product.

BEFORE Levee Setback on East side of River

- Federal Levees
- Levees Non-Cert
- State & Fed Roads
- City Boundary
- 100 Yr
- Flood Way

N

2006 Ortho-Photo
 1 inch equals 0.5 miles

0 0.125 0.25 0.5 0.75 1 Miles

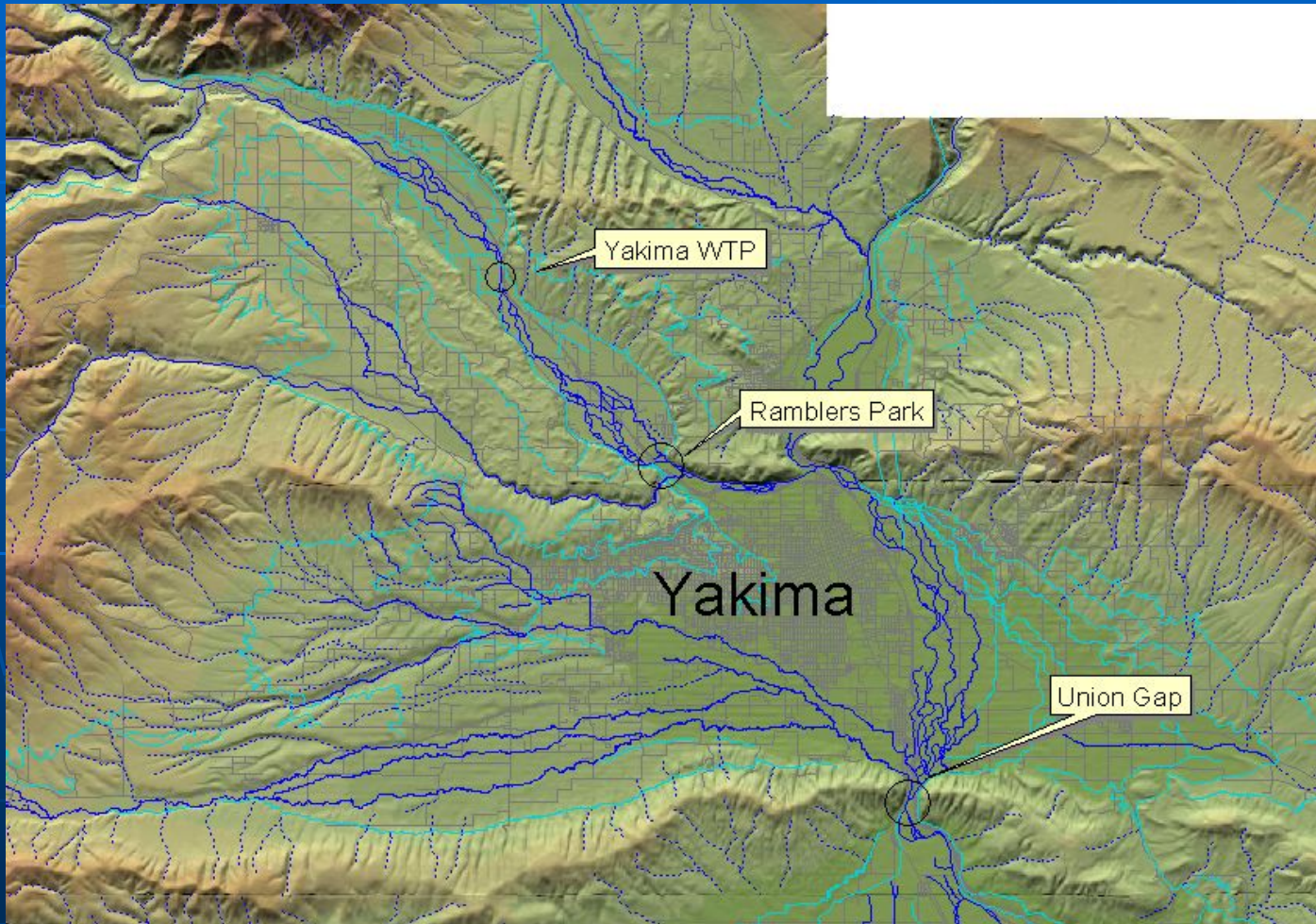
AFTER Levee Setback on East side of River

- Draft Levee Setback
- Federal Levees
- City Boundary
- 100 Yr
- Removed from floodplain
- Flood Way

Gap to Gap Partners

- Central Washington University
- City of Union Gap
- City of Yakima
- Diking District # 1
- National Marine Fisheries Service/NOAA
- North Yakima Conservation District
- US Bureau of Reclamation
- US Fish and Wildlife Service
- WA Dept of Ecology
- WA Dept of Fish and Wildlife
- WA Dept of Transportation
- WA State Parks
- Yakima Basin Fish and Wildlife Recovery Board
- Yakima County
- Yakima Greenway
- Yakima River Basin Water Enhancement Project

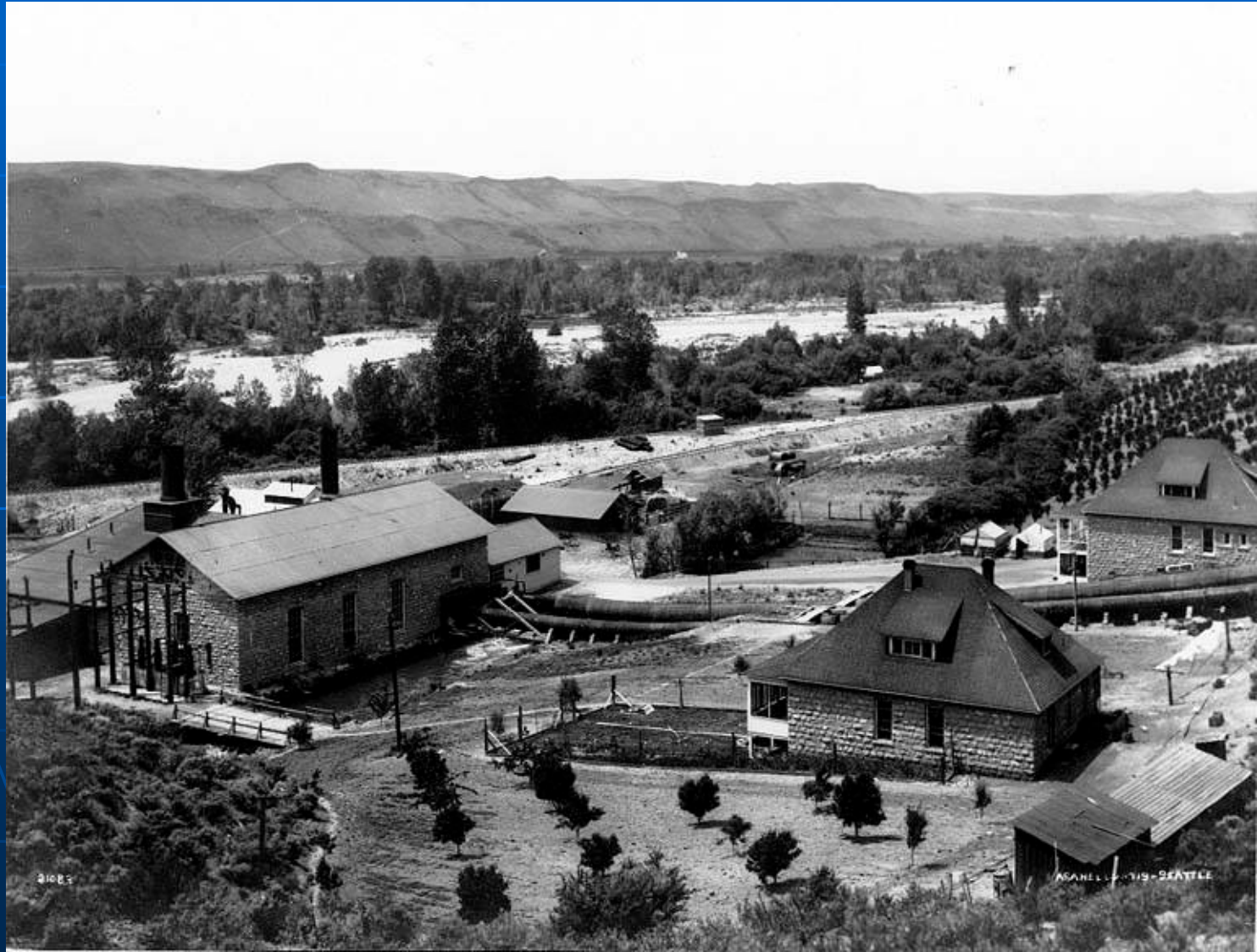
Connections Between Alluvial Floodplains



Yakima Water Treatment Plant Reach Analysis



Wapatox Powerplant and Naches River, 1906



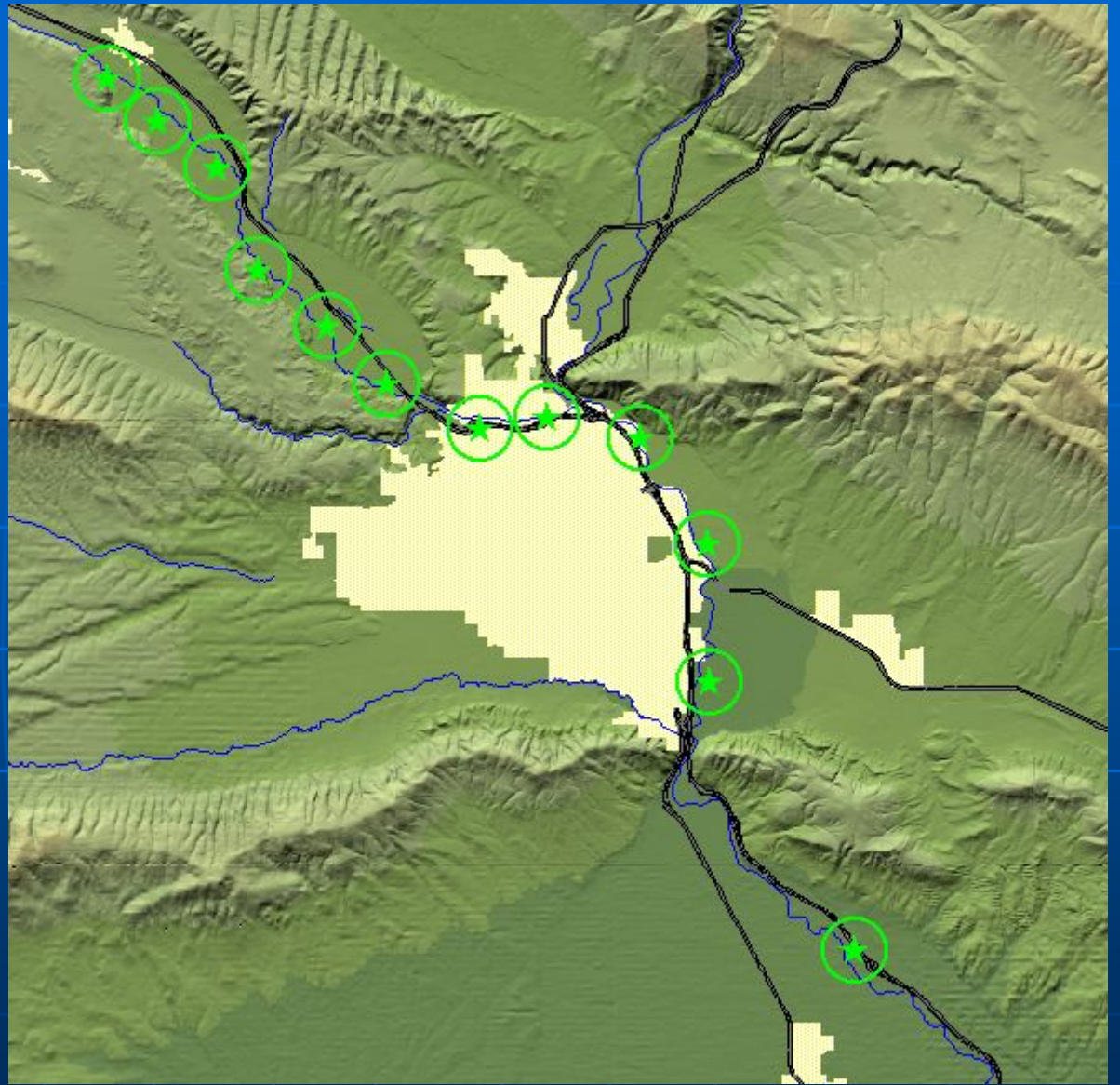
Wrecking Yard Relocation



Ponderosa Pine Project



Ponderosa Pine Planting Sites



Questions and Discussion

