



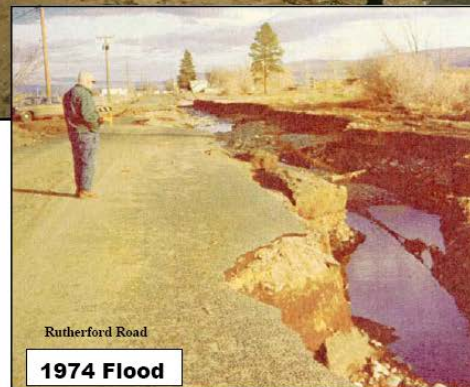
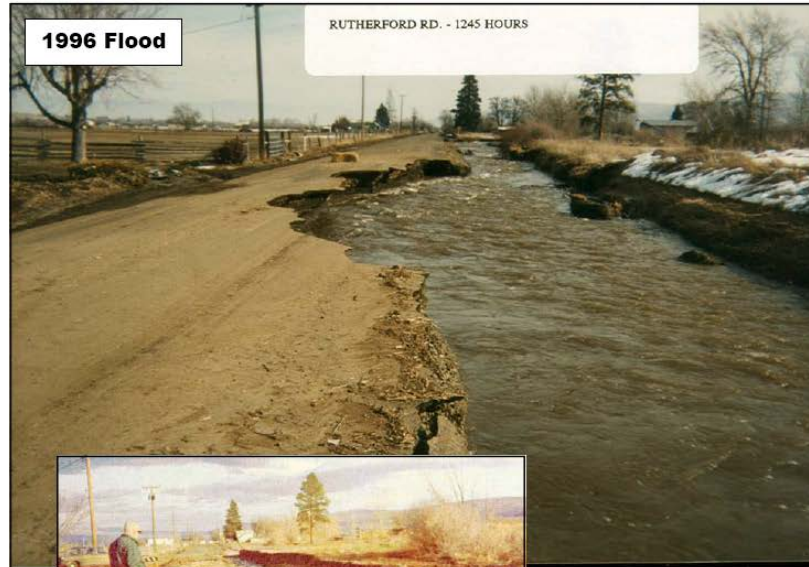
# Science and Management Conference

June 18, 2009

Presented by  
*Yakima County*  
*Flood Control Zone District*  
Surface Water Management Division  
Yakima County Public Services

# Yakima County Flood Control Zone District

## ACTIVITIES & PROJECT UPDATES



January 2009

Surface Water Management Division  
Yakima County Public Services Department

# Major Alluvial Floodplains of the Yakima Basin

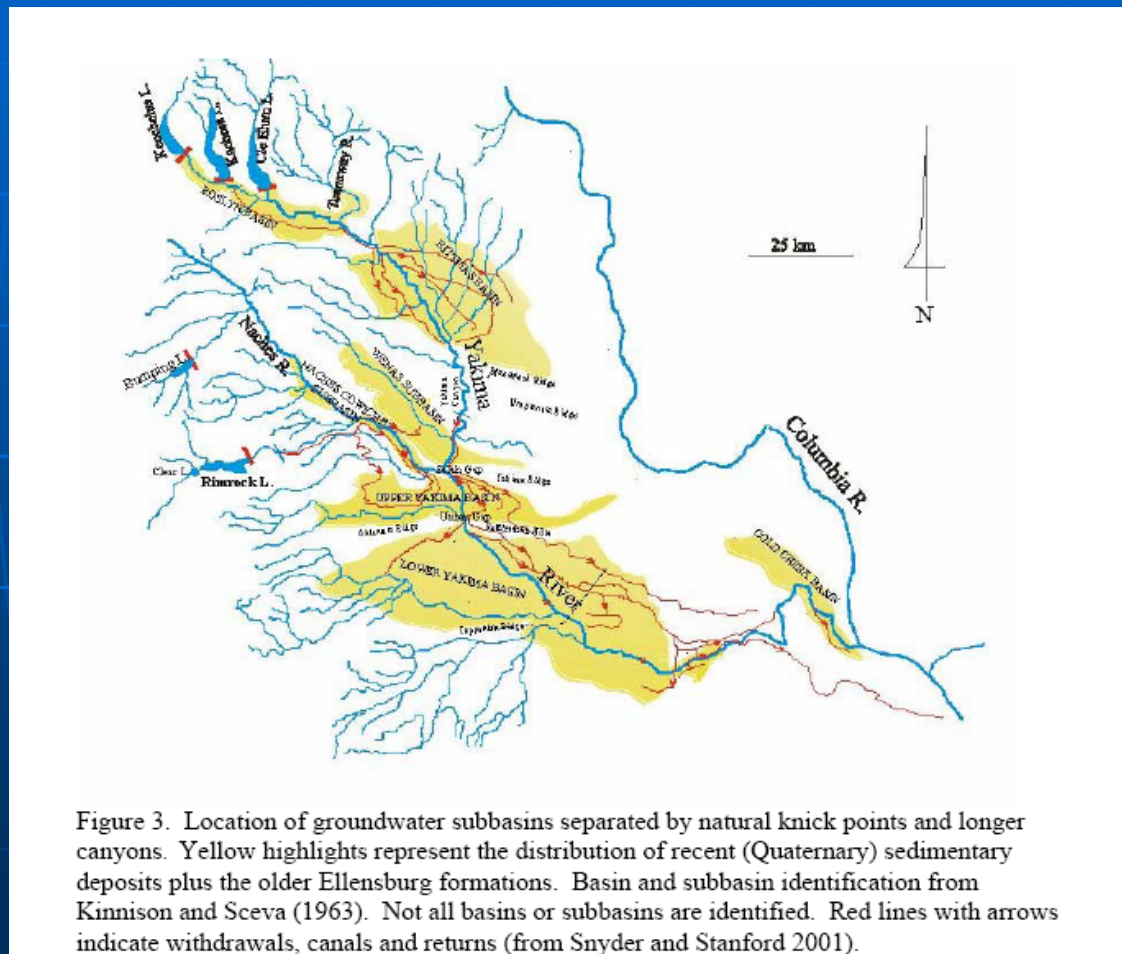
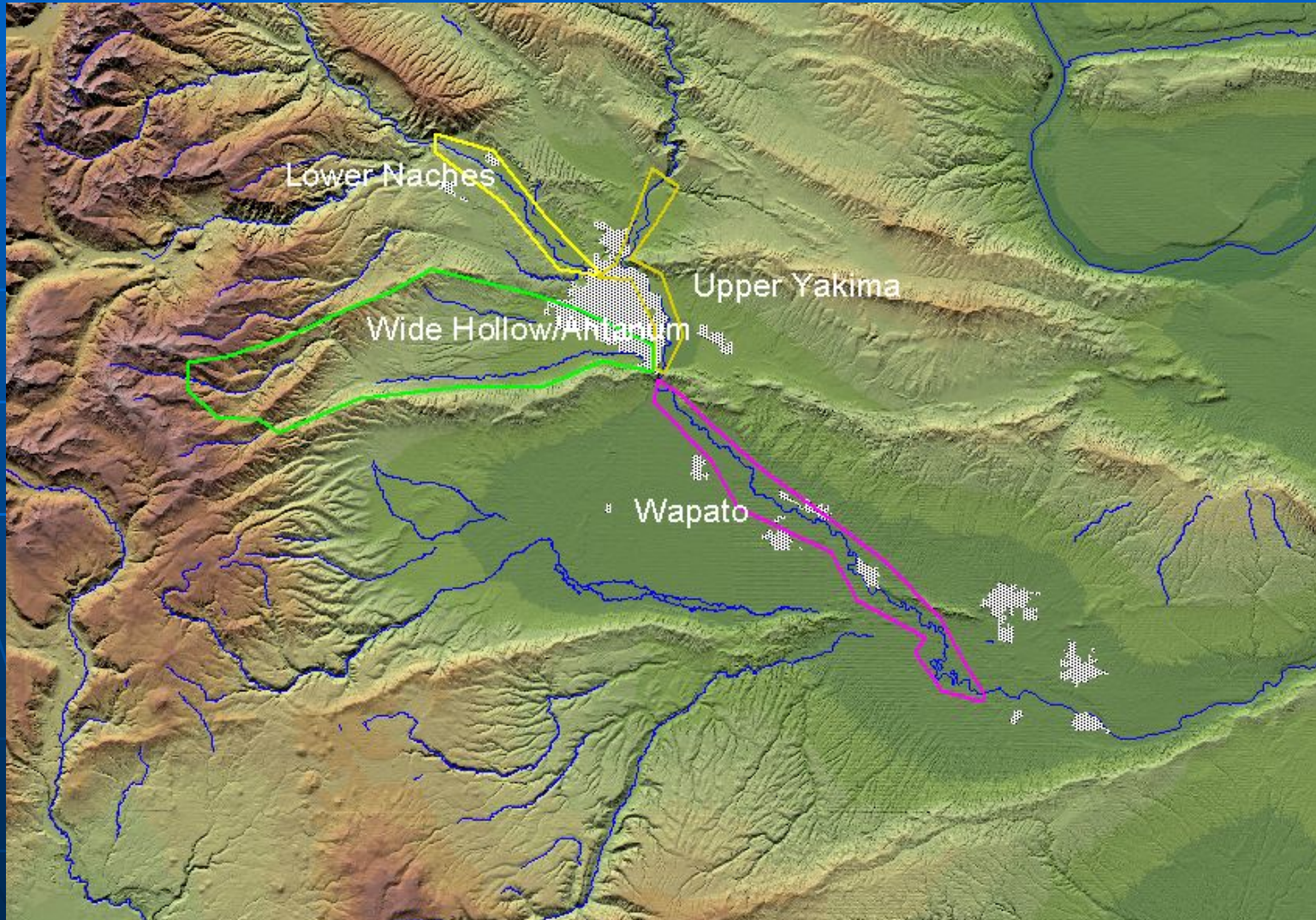


Figure 3. Location of groundwater subbasins separated by natural knick points and longer canyons. Yellow highlights represent the distribution of recent (Quaternary) sedimentary deposits plus the older Ellensburg formations. Basin and subbasin identification from Kinnison and Sceva (1963). Not all basins or subbasins are identified. Red lines with arrows indicate withdrawals, canals and returns (from Snyder and Stanford 2001).

# Comprehensive Flood Hazard Management Plans



# What all is in a CFHMP?

- Non-Structural Recommendations

  - Mapping/Modeling other Studies

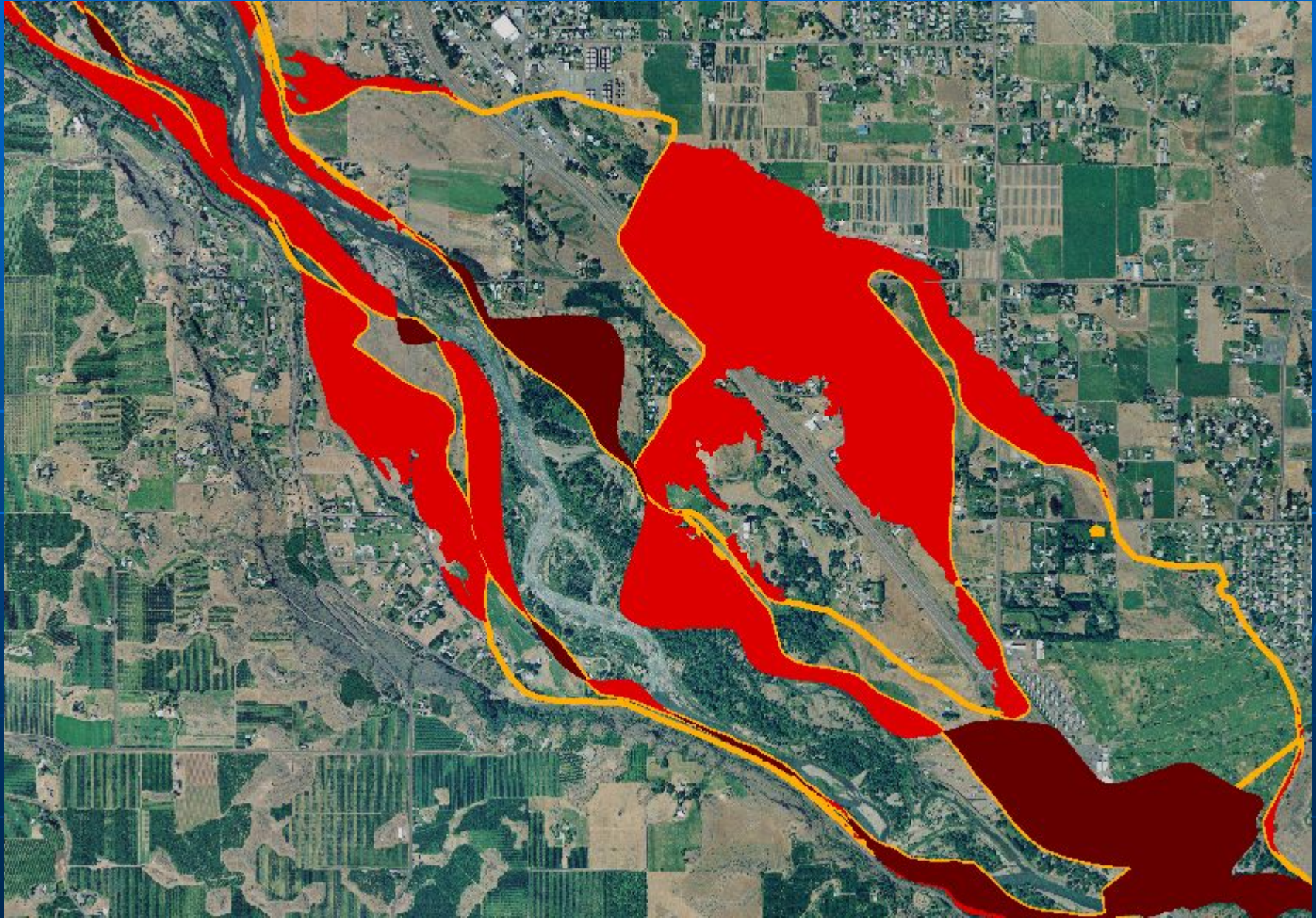
  - Changes in Land Use, Suggested  
Future Land Use

- Structural Recommendations

  - Alterations to Levees, Roads,  
Diversions

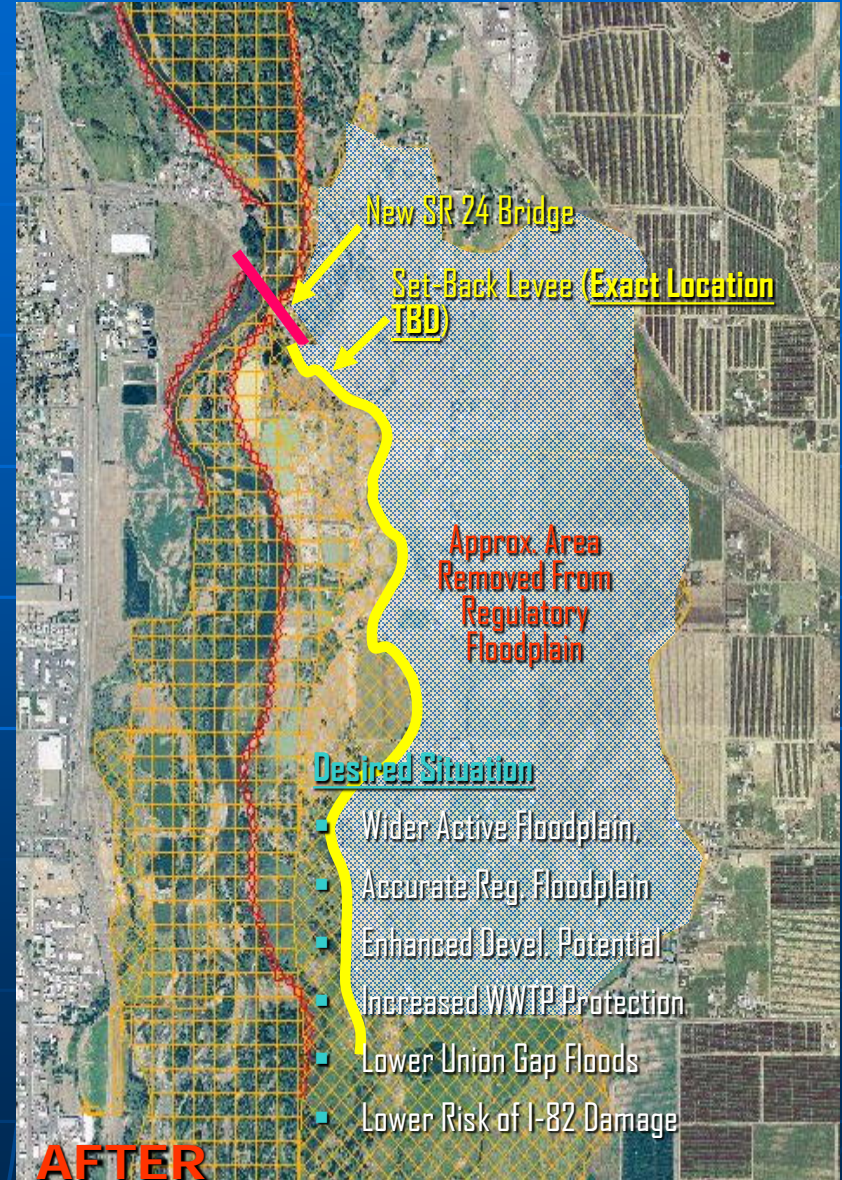
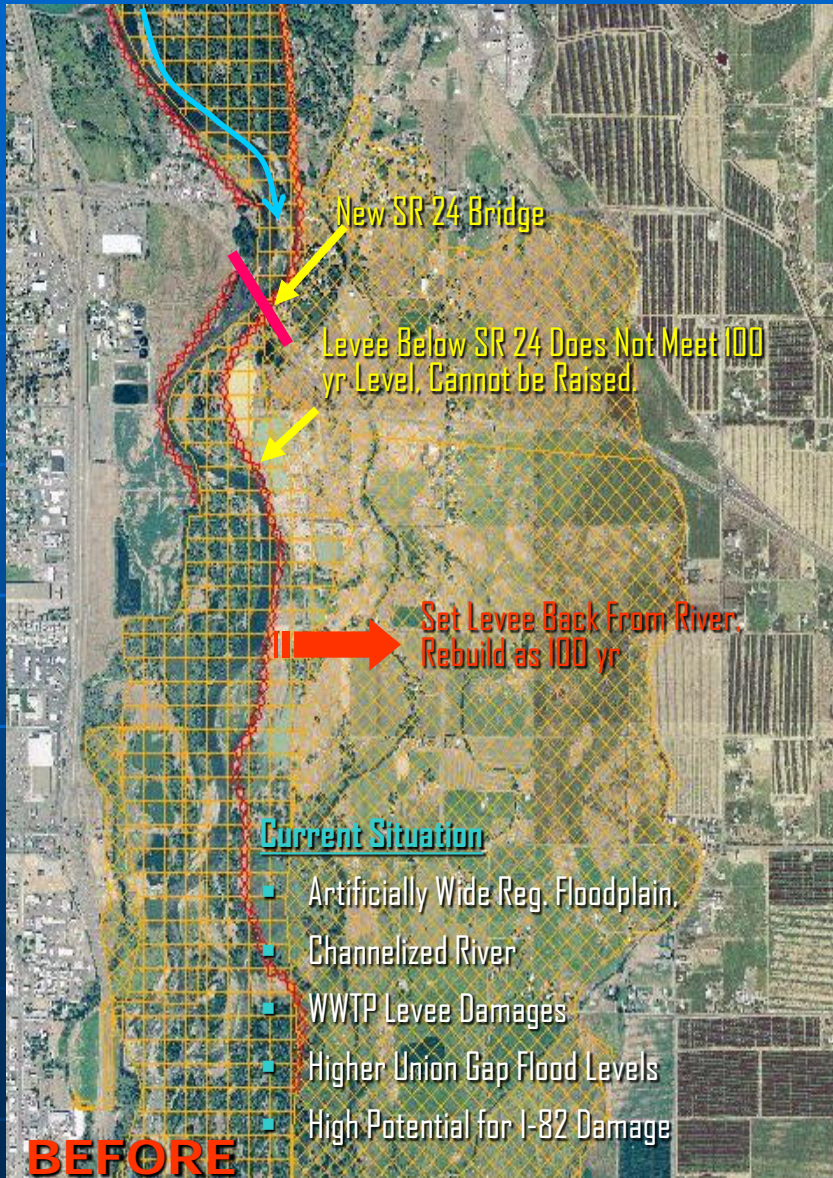
  - Maintain Riverine Function

# Floodplain Mapping



# Important Near Term Actions




## #1 - Levee Set-Back Below SR 24, East Side of River

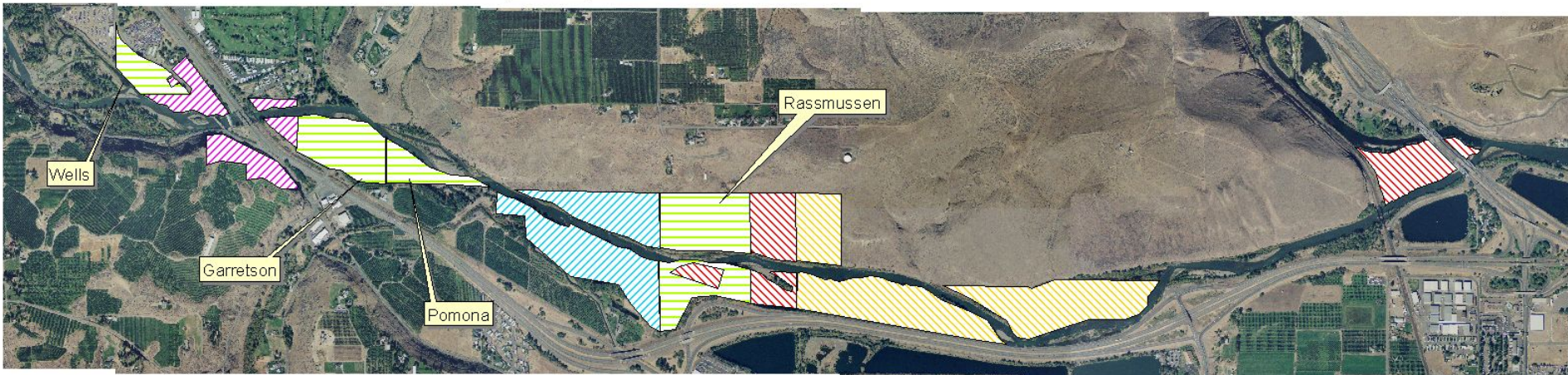






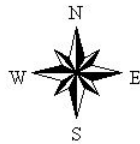
## Legend

-  Properties currently owned by WSDOT
-  Property to be acquired by WSDOT
-  Properties currently owned by Yakima County
-  Properties currently owned by City of Yakima
-  Properties to be acquired in SRFB Grant



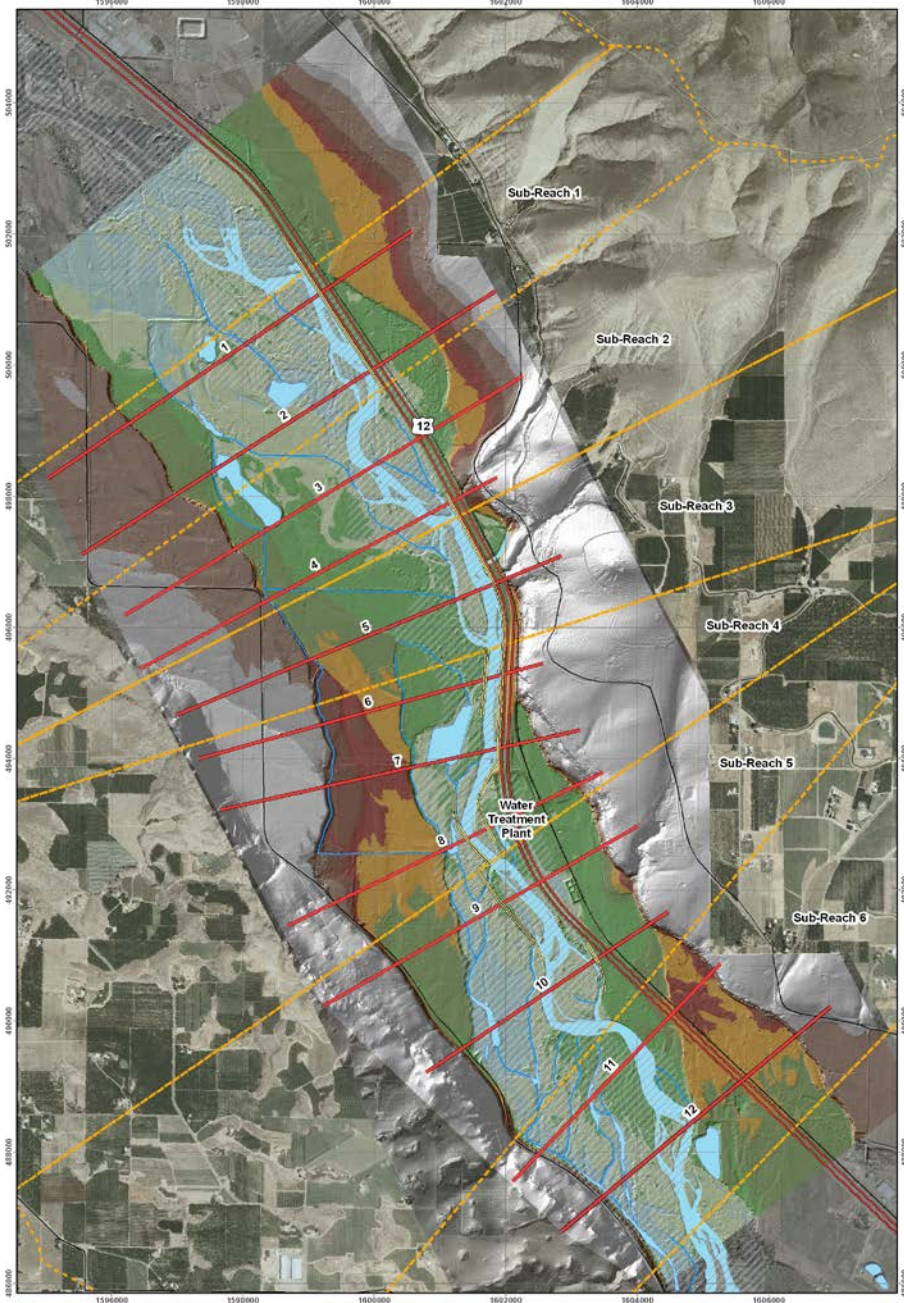
# Naches River Floodplain Acquisition Map

2000 0 2000 4000 Feet



# Yakima Water Treatment Plant Reach Analysis





Legend		Height Above Water Surface (HAWS) (feet)	
	Channel		1 (2.0 - 4.5)
	Highway		2 (4.58 - 9)
	Subreach boundary		3 (9.58 - 13.5)
	Coon water		4 (13.51 - 18)
	Cross section		5 (18.01 - 22.5)
	PDMA 100yr		6 (22.51 - 27)
	2008 Water surface		7 (27.01 - 31.5)
	Road		8 (31.51 - 36)
	Railroad		9 (36.01 - 40.5)
			10 (40.51 - 45)
			11 (45.01 - 49.5)
			12 (49.51 - 54)

Study Area D

**Distribution of Terraces Along the Water Treatment Plant Reach of the Naches River**

Yakima County, WA

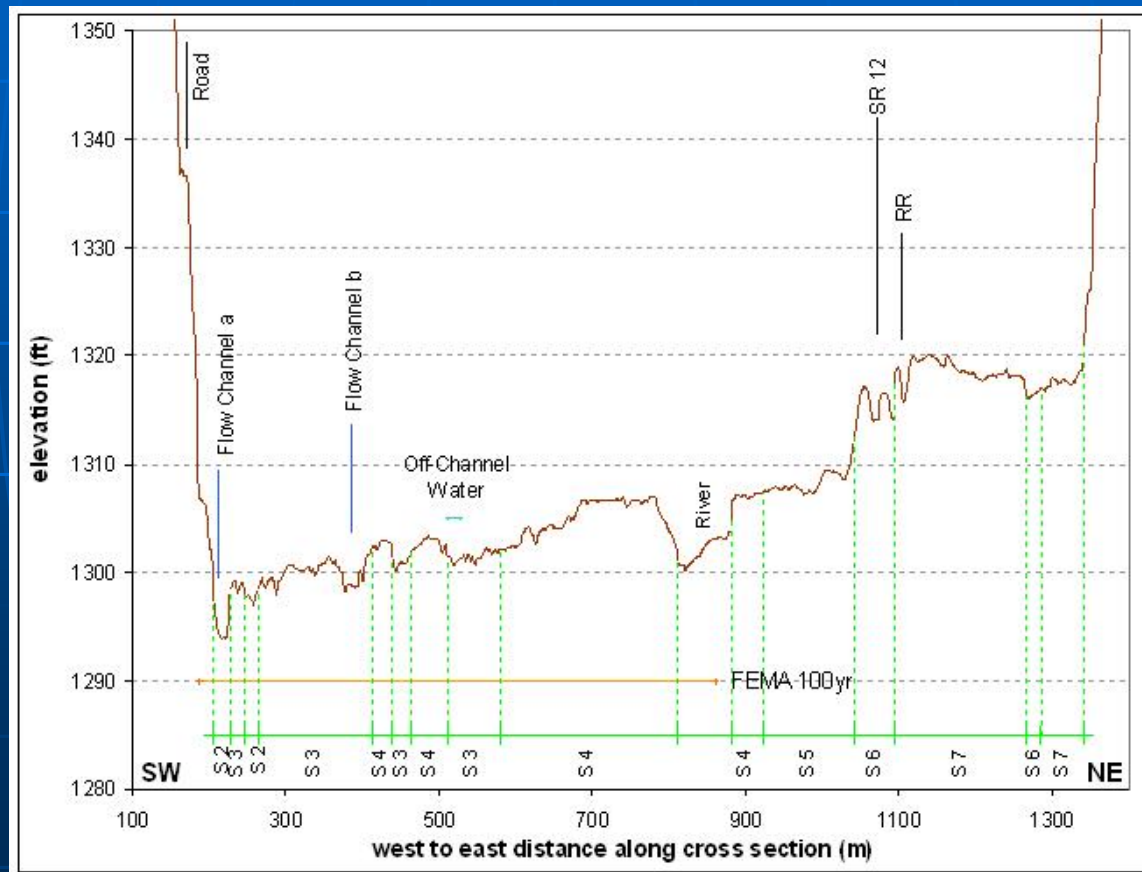
ENTRIX  
Down to Earth. Down to Business.

YAKIMA COUNTY DISTRICT LEAD  
NAP 2008 AP-Phase 1

Prepared by:  
ENTRIX, Inc. 1000 West Main Street, Suite 1000, Yakima, WA 98901

File: S:\entrixcorp\GIS\TERRACE\MTL\UW\Naches\_TerraceFigure.mxd

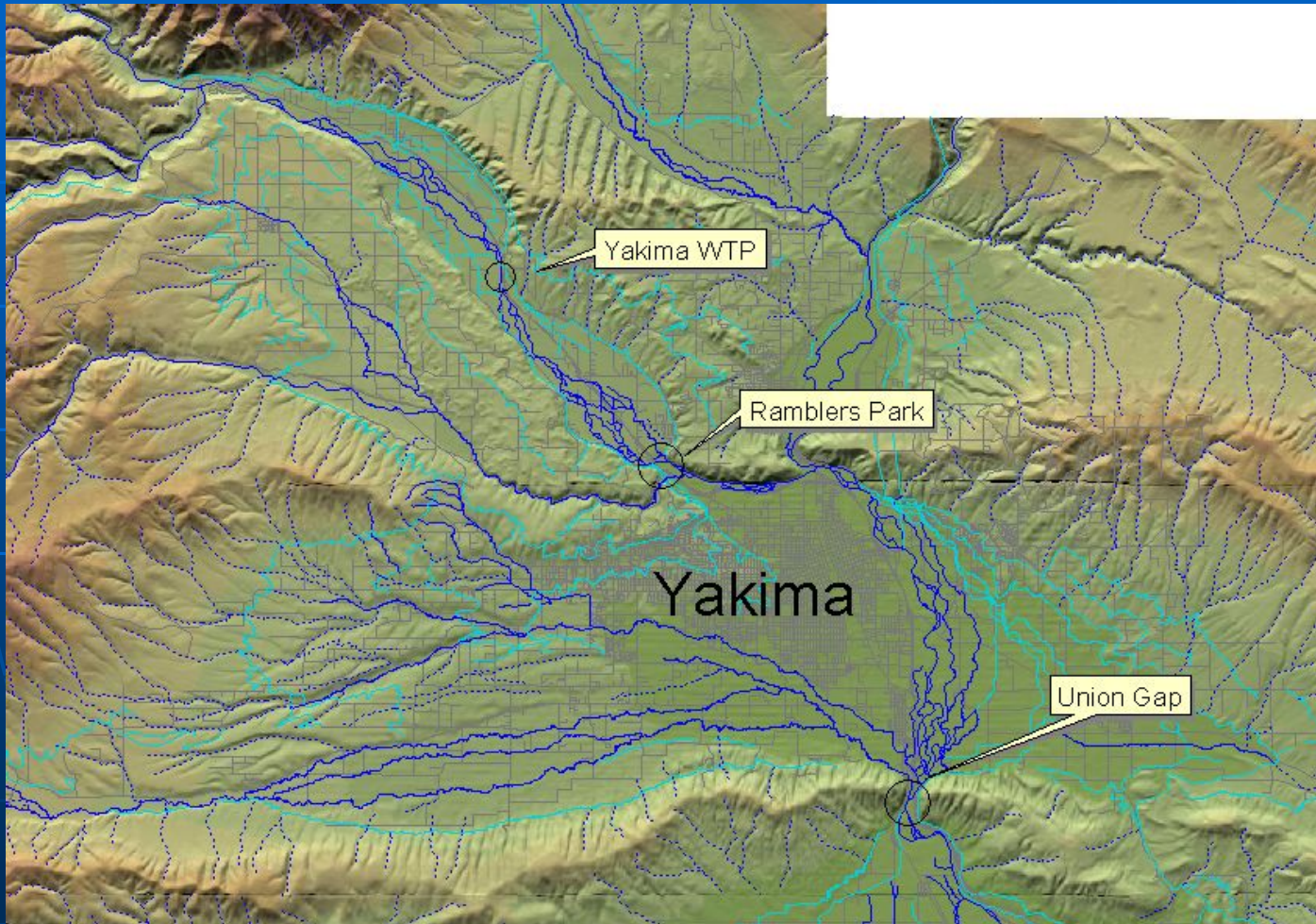
# Location of the Naches River Relative to the low point in the Floodplain



# Changes in How the Corps Fights Floods – ESA is finally here



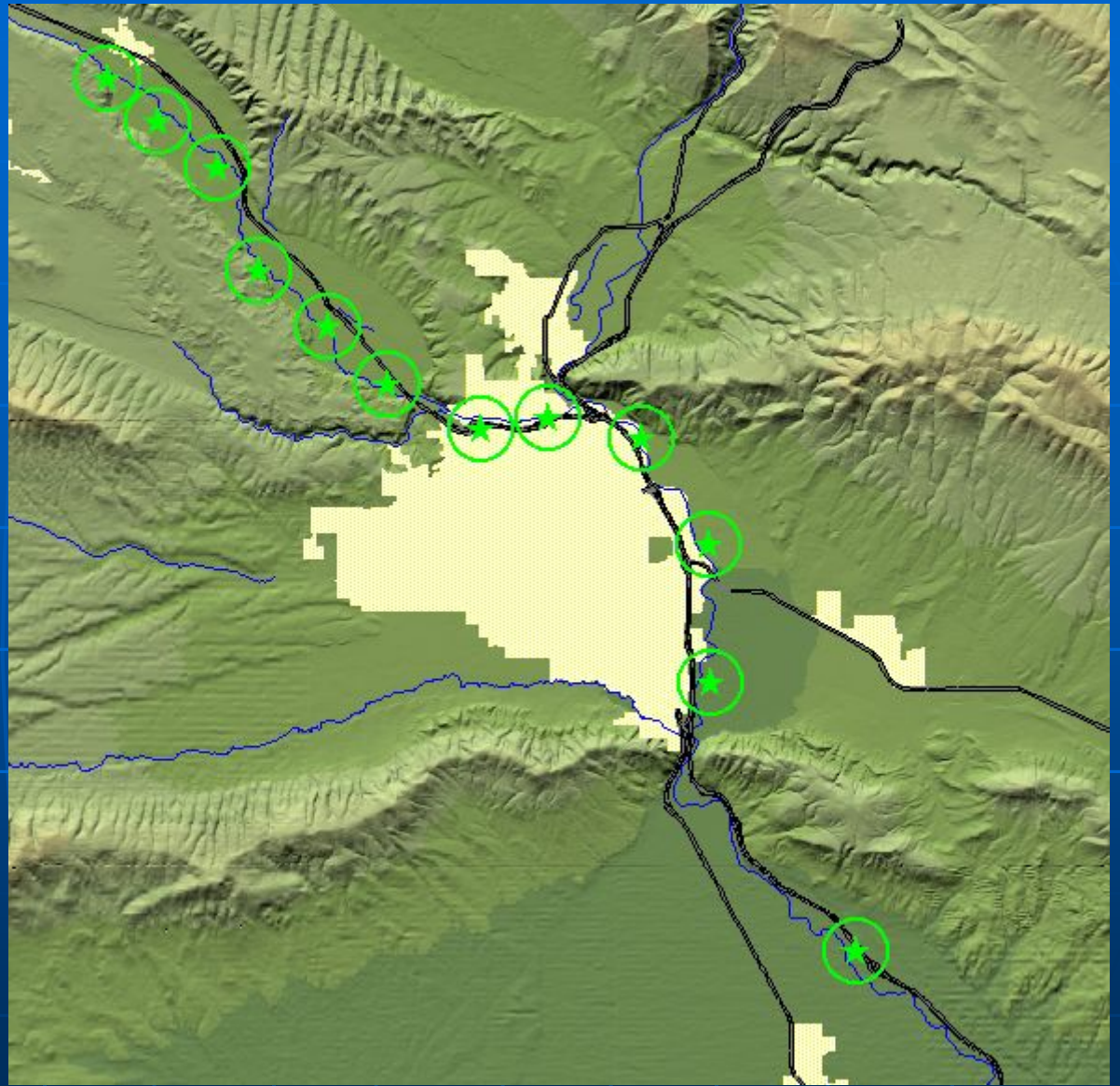
# Connections Between Alluvial Floodplains



# Ponderosa Pine Project



# Ponderosa Pine Planting Sites





# Questions and Discussion

