

Wapato Reach Study and FCZD Activities 2010

Joel Freudenthal

Fish and Wildlife Biologist

Yakima County Public Services



Wapato Reach Study

- Funded by SRFB
- WDFW Lead with Cooperators
 - YN
 - Yakima County
 - BOR
 - USFWS

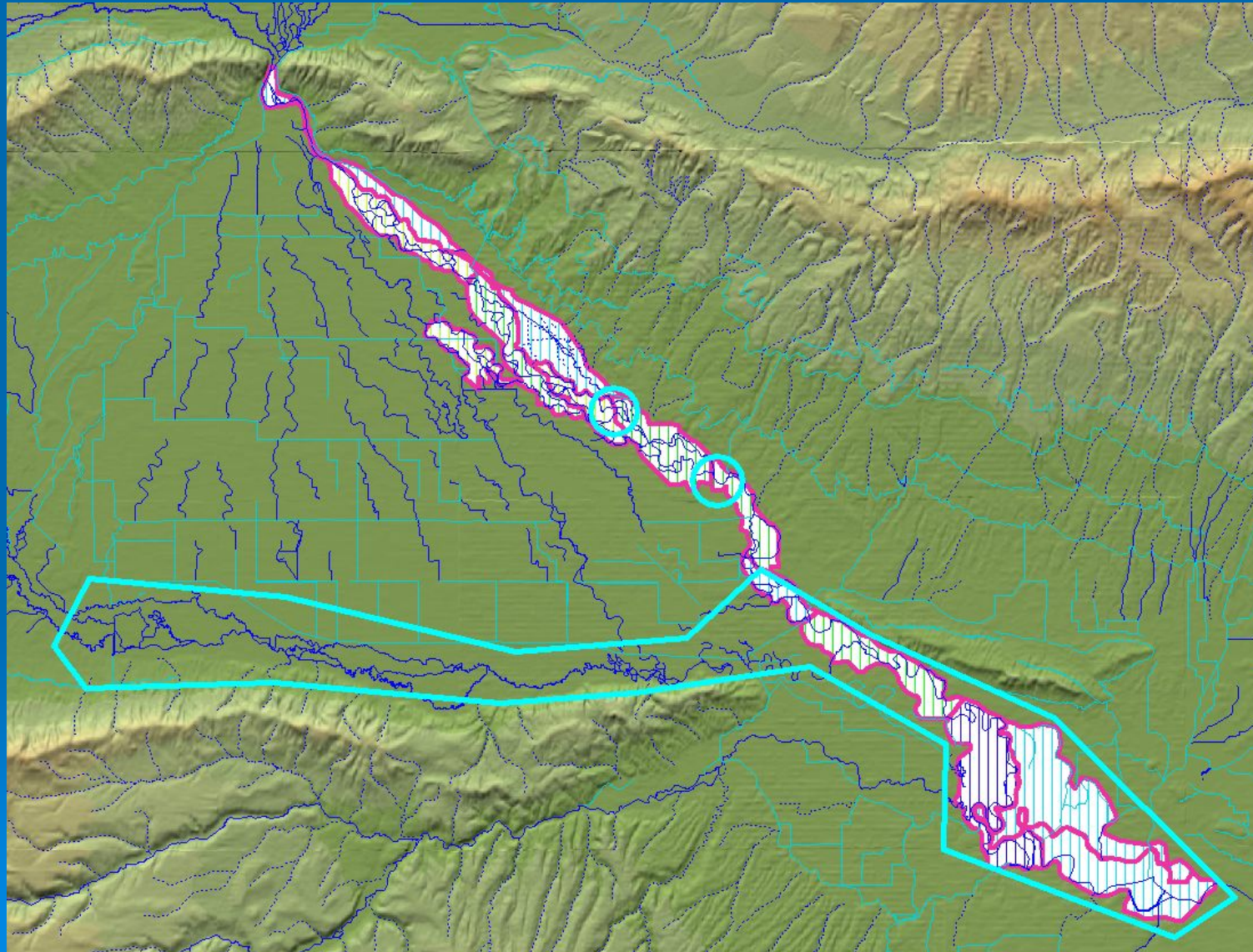
Wapato Reach Study

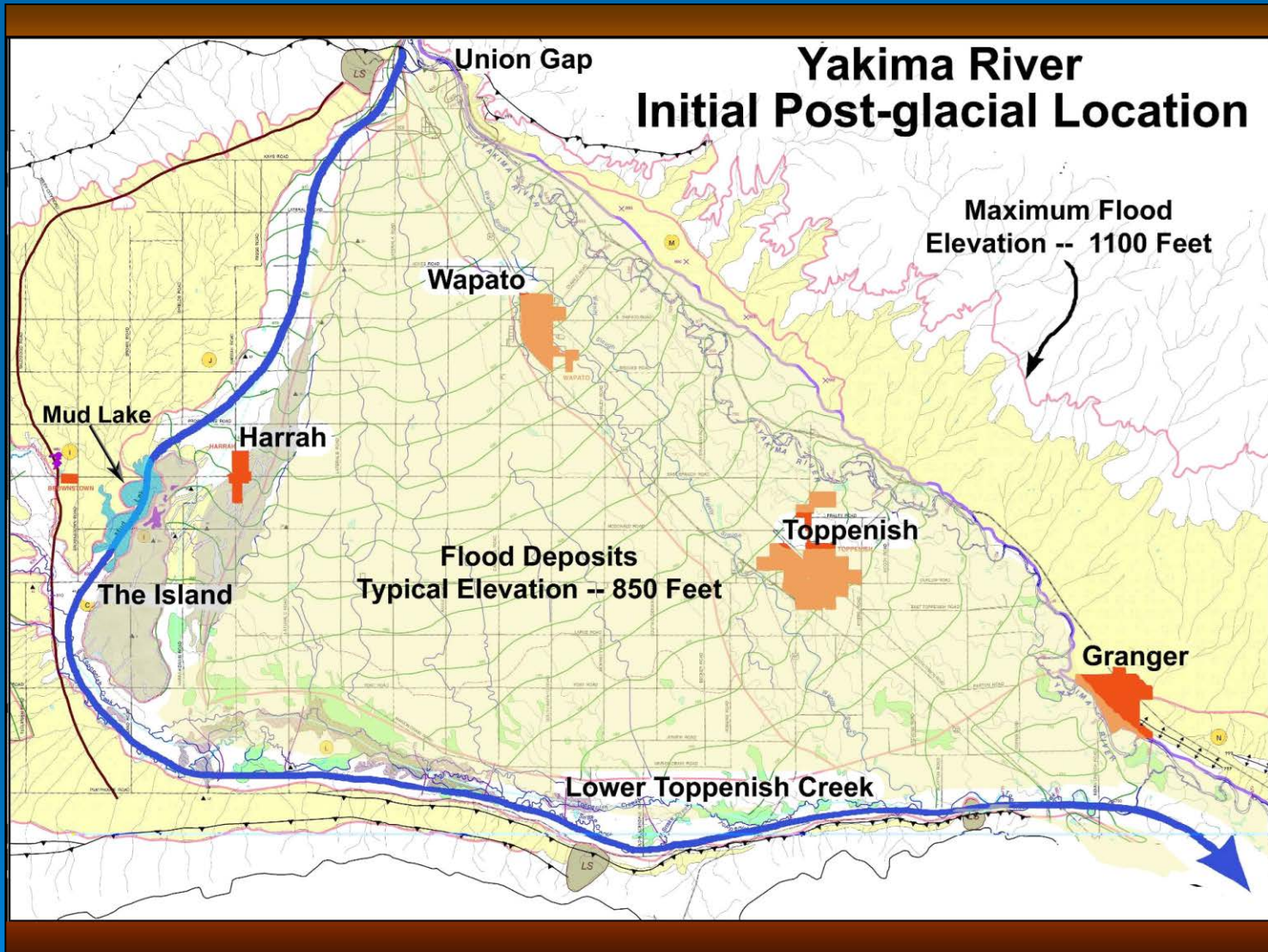
- Intent is to examine the potential for restoration of the reach for improved Fish and Wildlife Habitat
 - Develop recommendations for “no-brainer” actions
 - Summarize existing information and begin documentation of habitat characteristics and fish use.
 - Very little work has been done on existing anadromous fish use, habitat suitability, and habitat forming processes

Wapato Reach Study

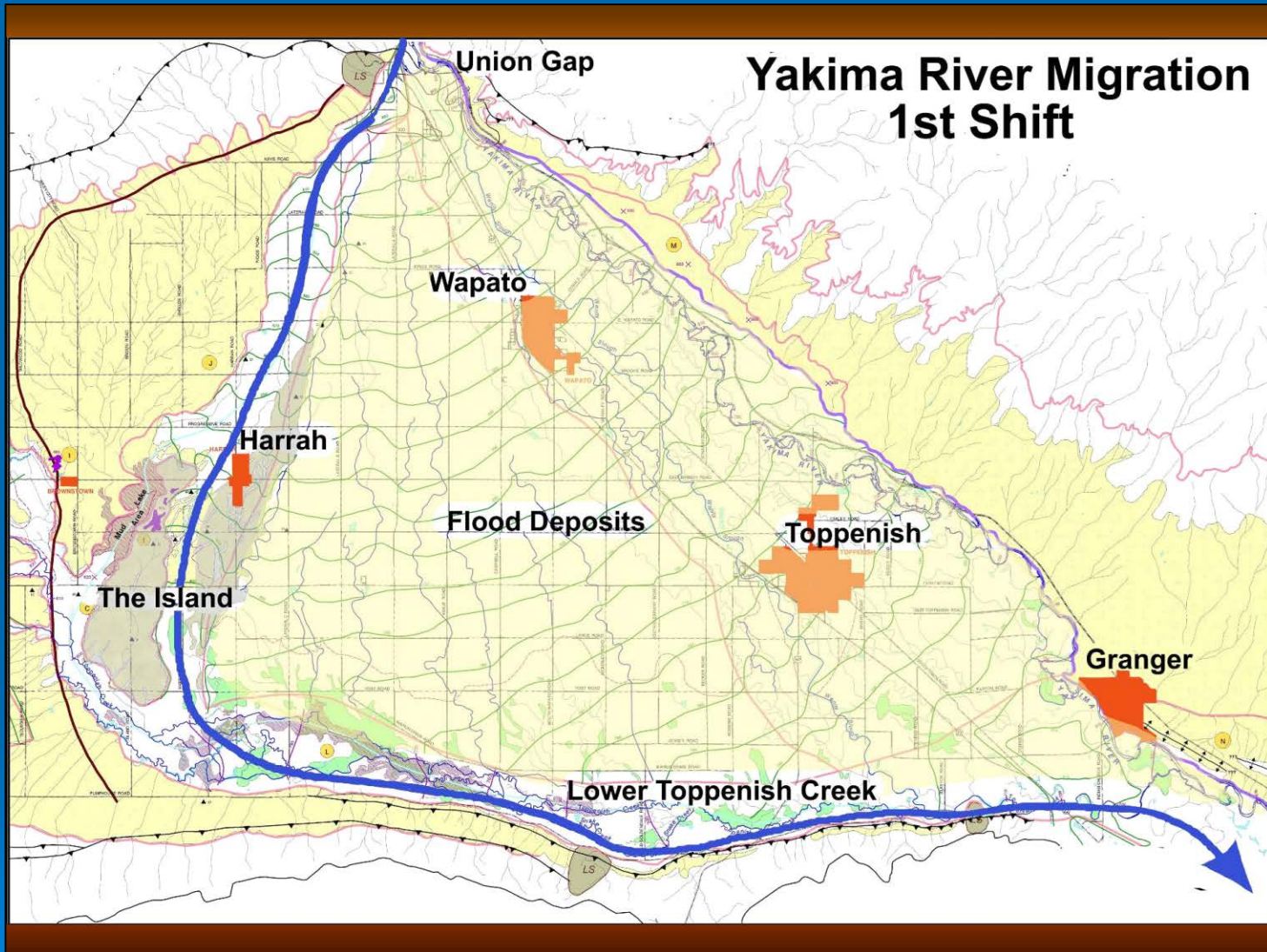
- Collected and Summarized existing data
 - Bibliography
 - Huge GIS and other Digital Data Set
- Currently have developed a scope for the above activities
- YN Fisheries is beginning to document fish use, especially side channels, on a year round basis
- Big Relationship to Summer Chinook, Sockeye Reintroduction, and Flow Management in the Basin.

Wapato Reach Study Area

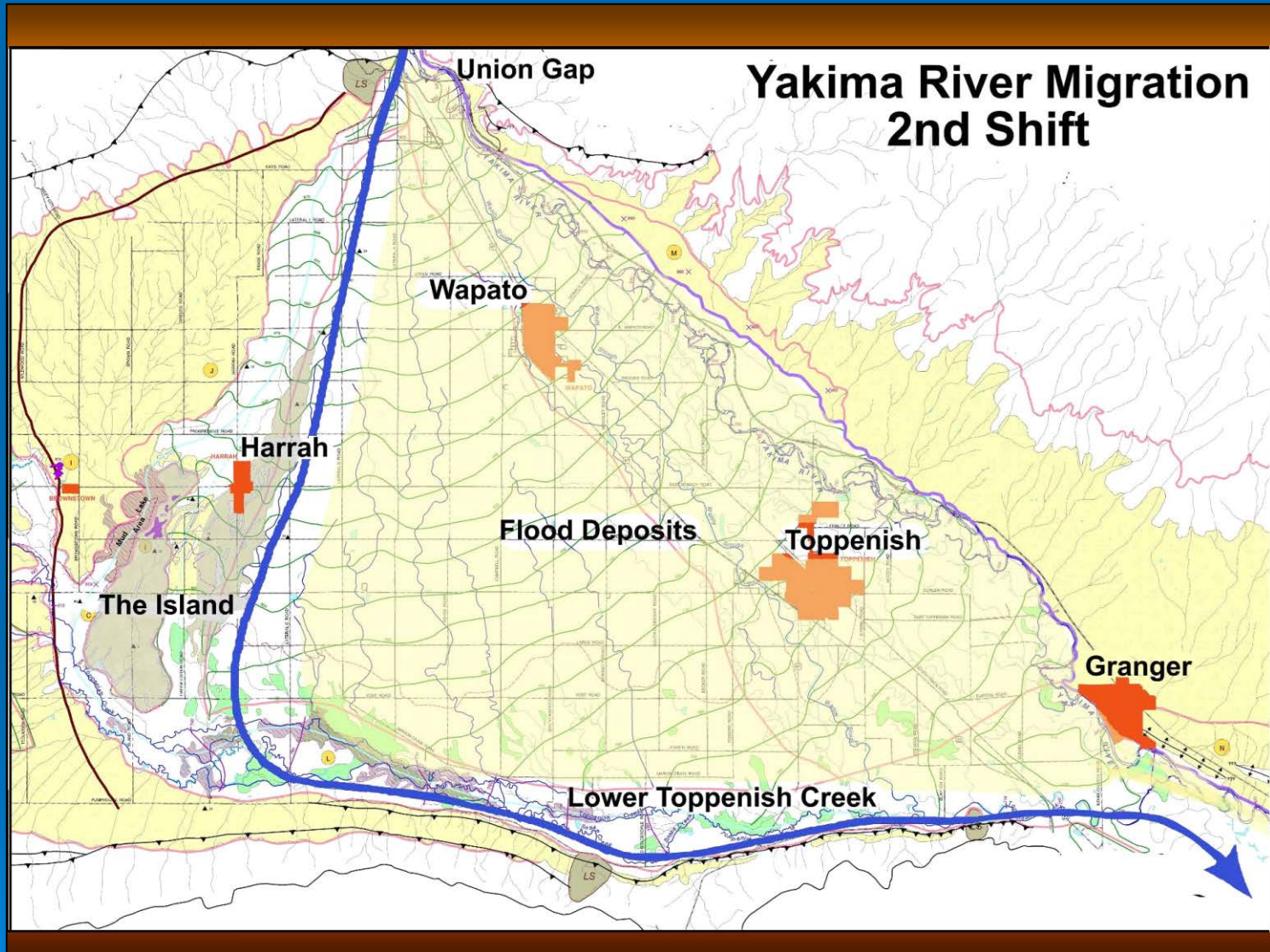




From: Toppenish Basin
Geomorphology, GeoMax, 2007

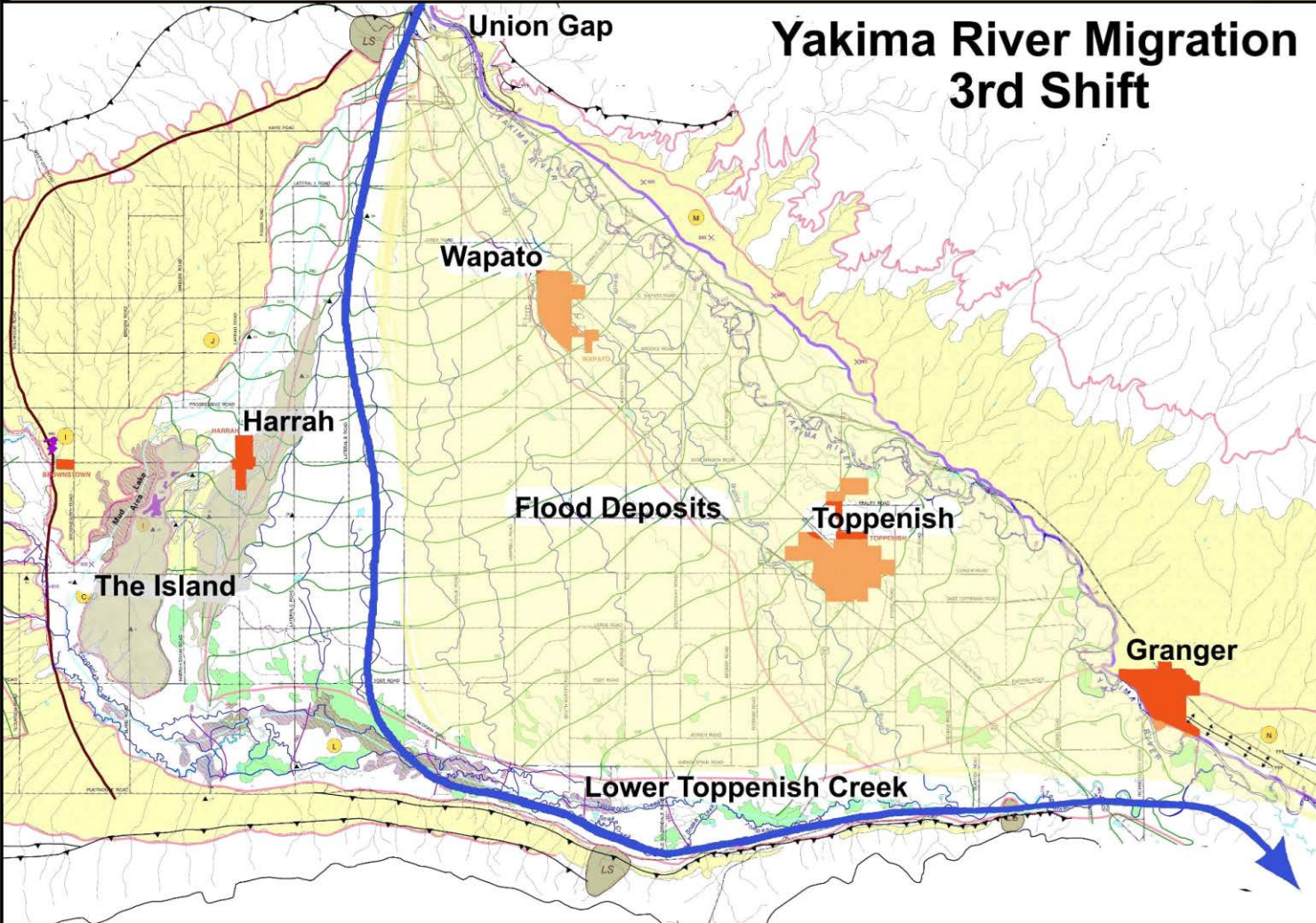


From: Toppenish Basin
Geomorphology, GeoMax, 2007



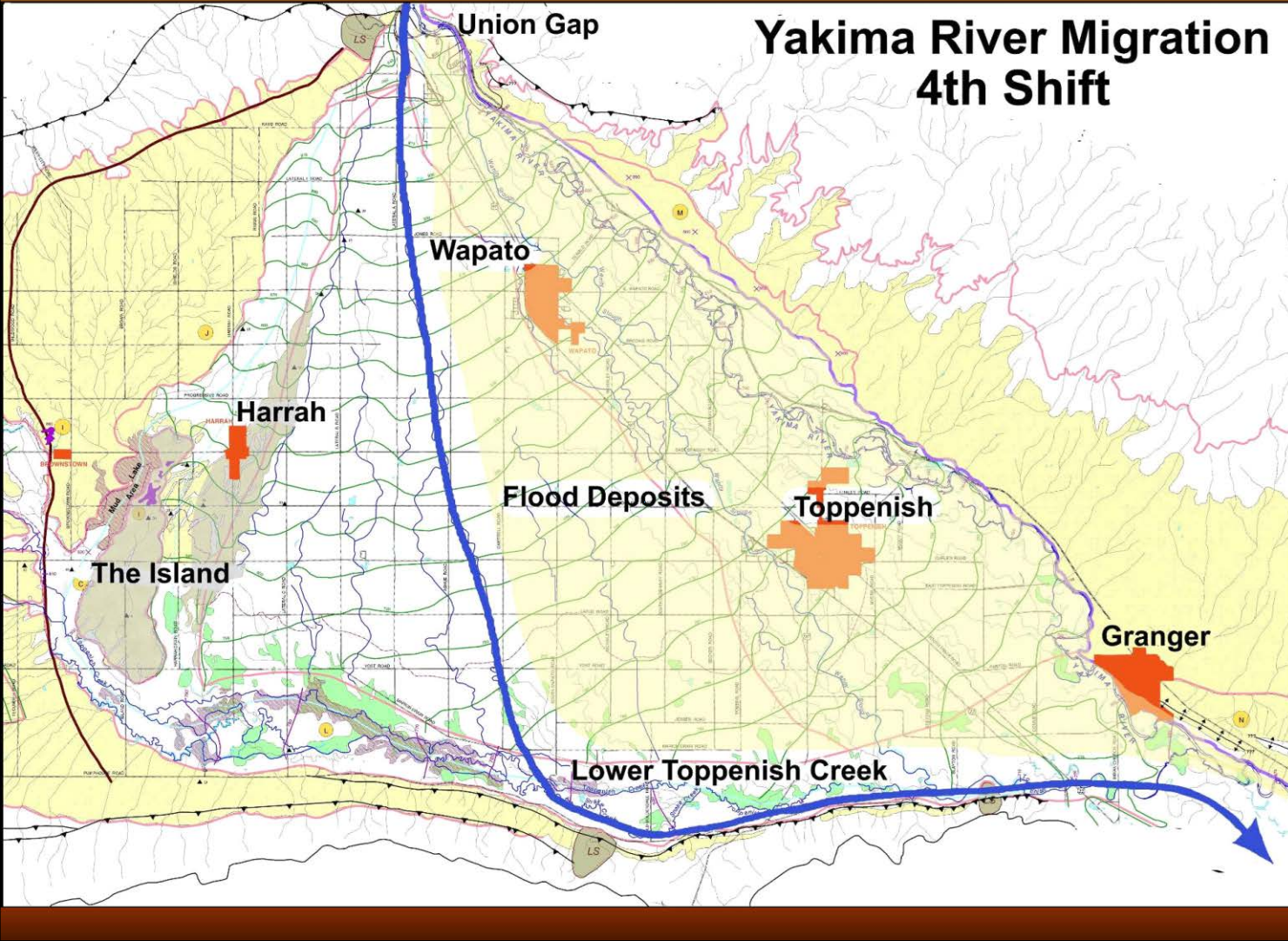
From: Toppenish Basin
Geomorphology, GeoMax, 2007

Yakima River Migration 3rd Shift

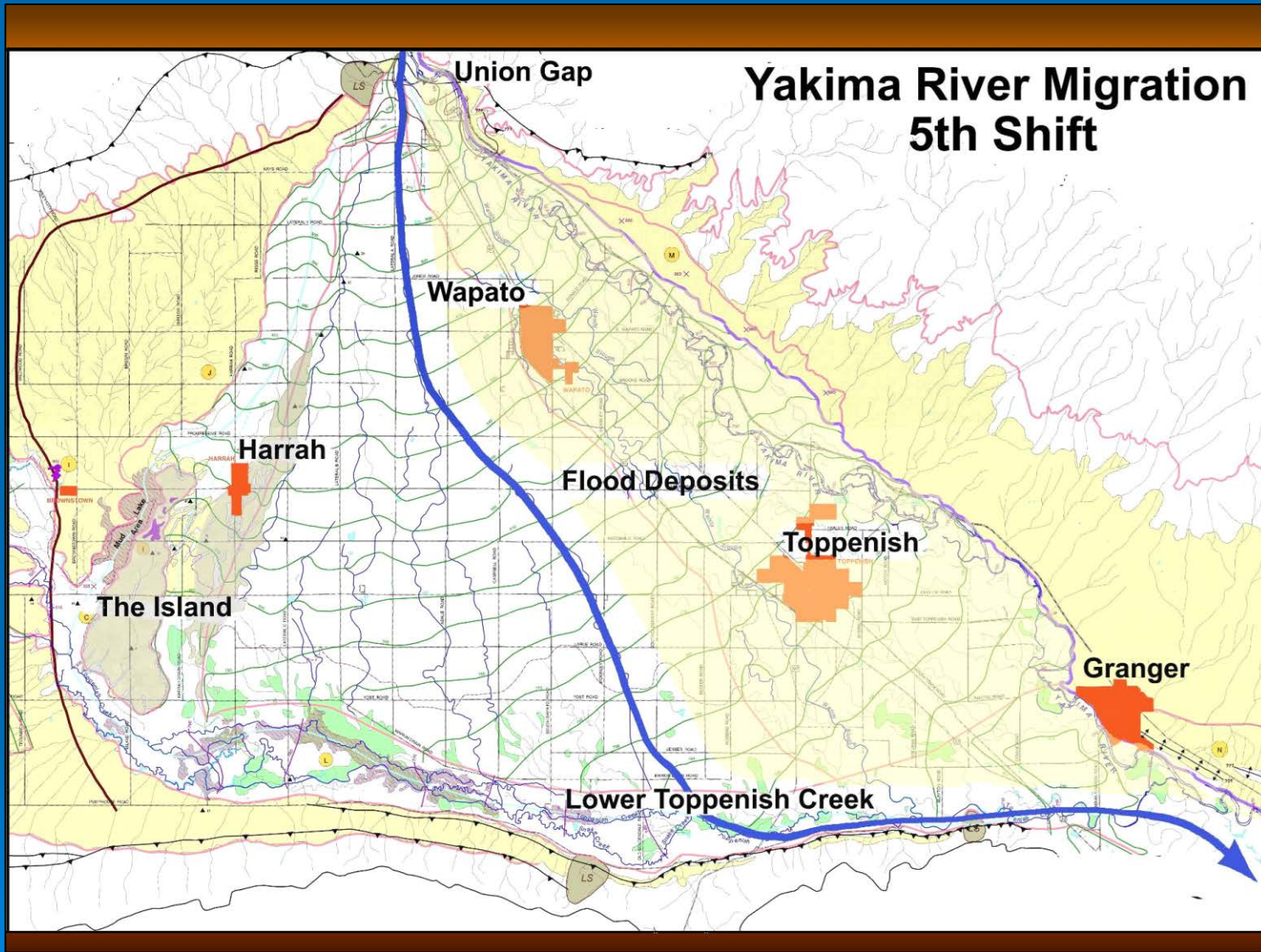


From: Toppenish Basin
Geomorphology, GeoMax, 2007

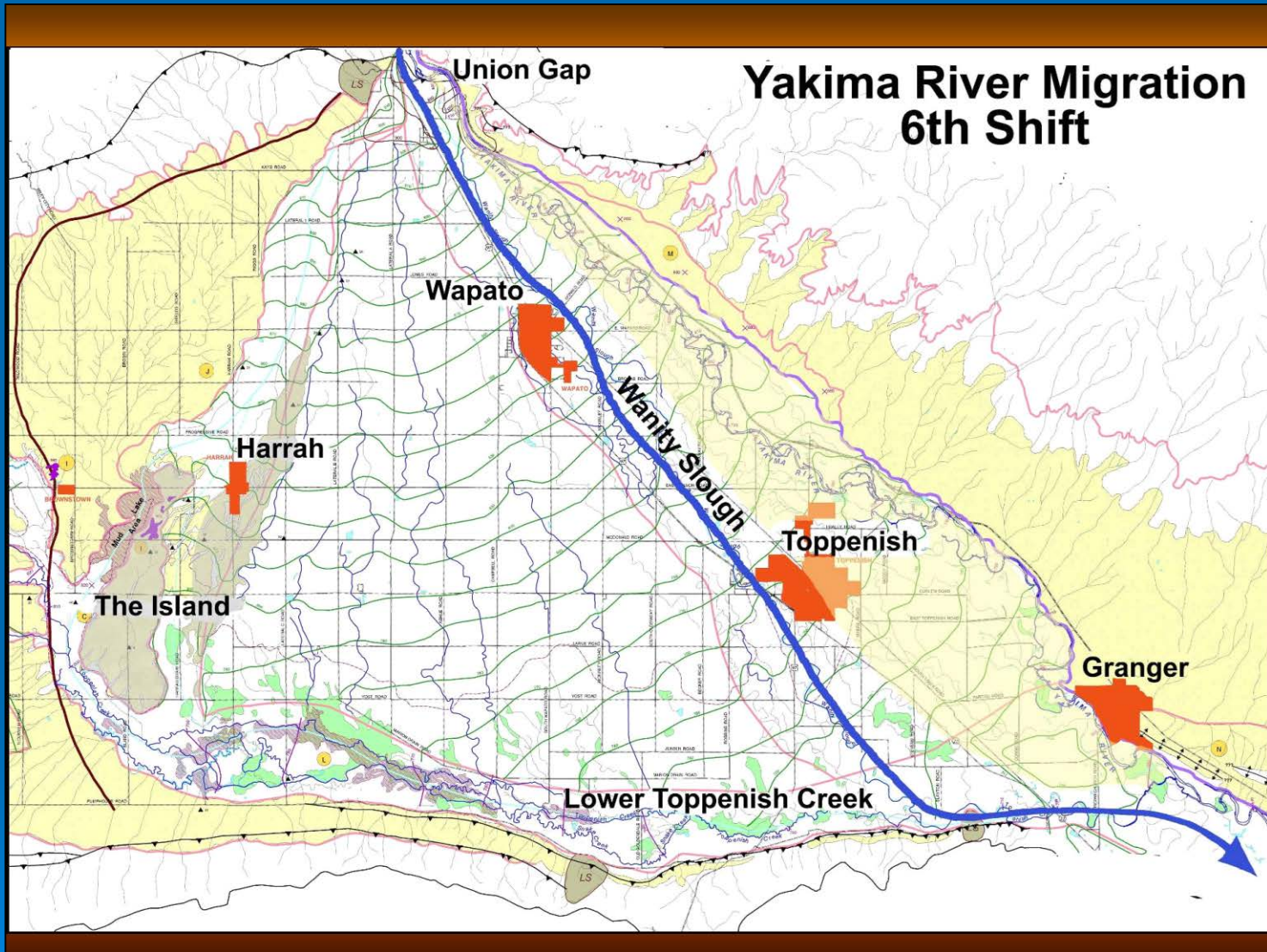
Yakima River Migration 4th Shift



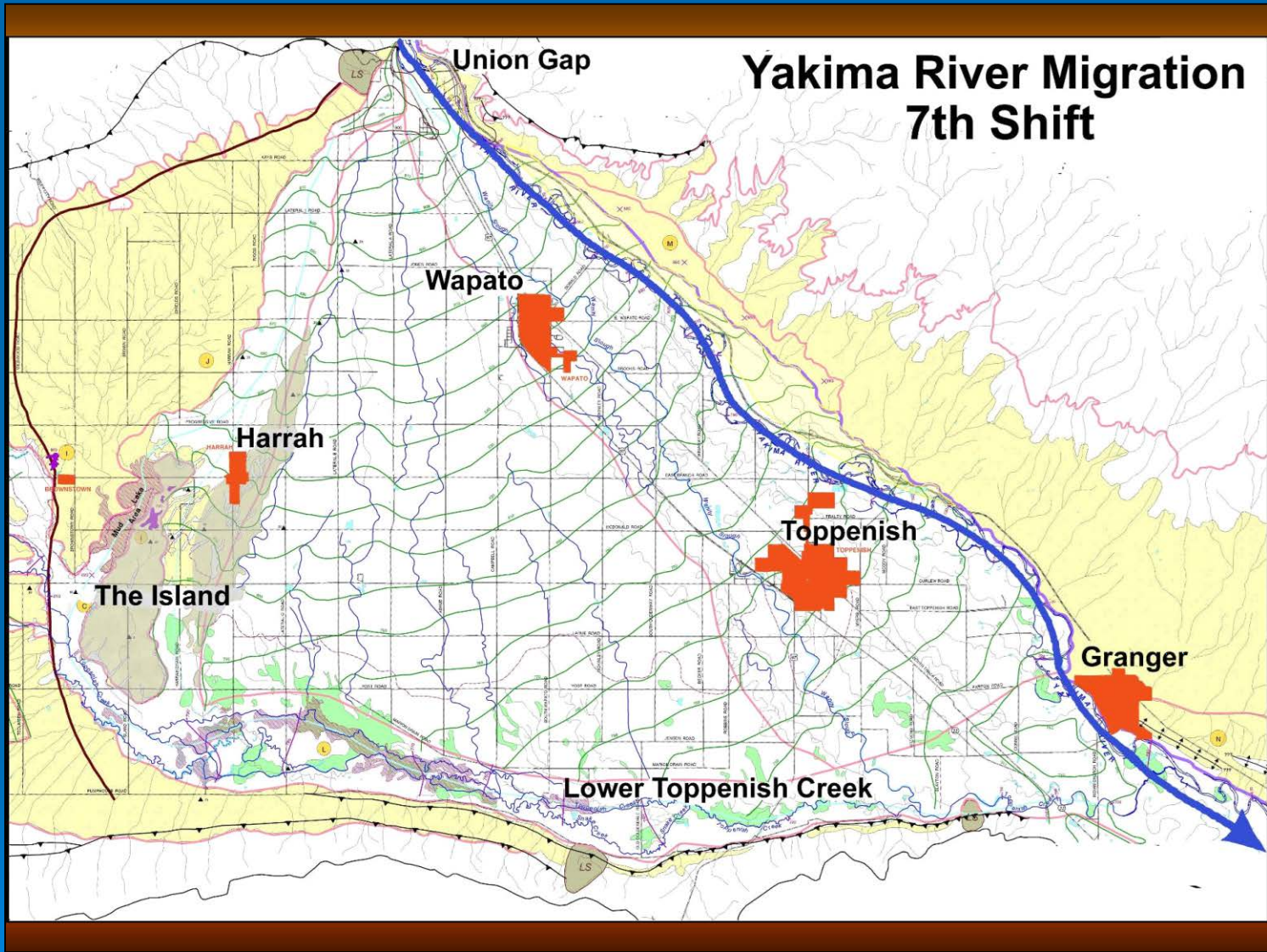
From: Toppenish Basin
Geomorphology, GeoMax, 2007



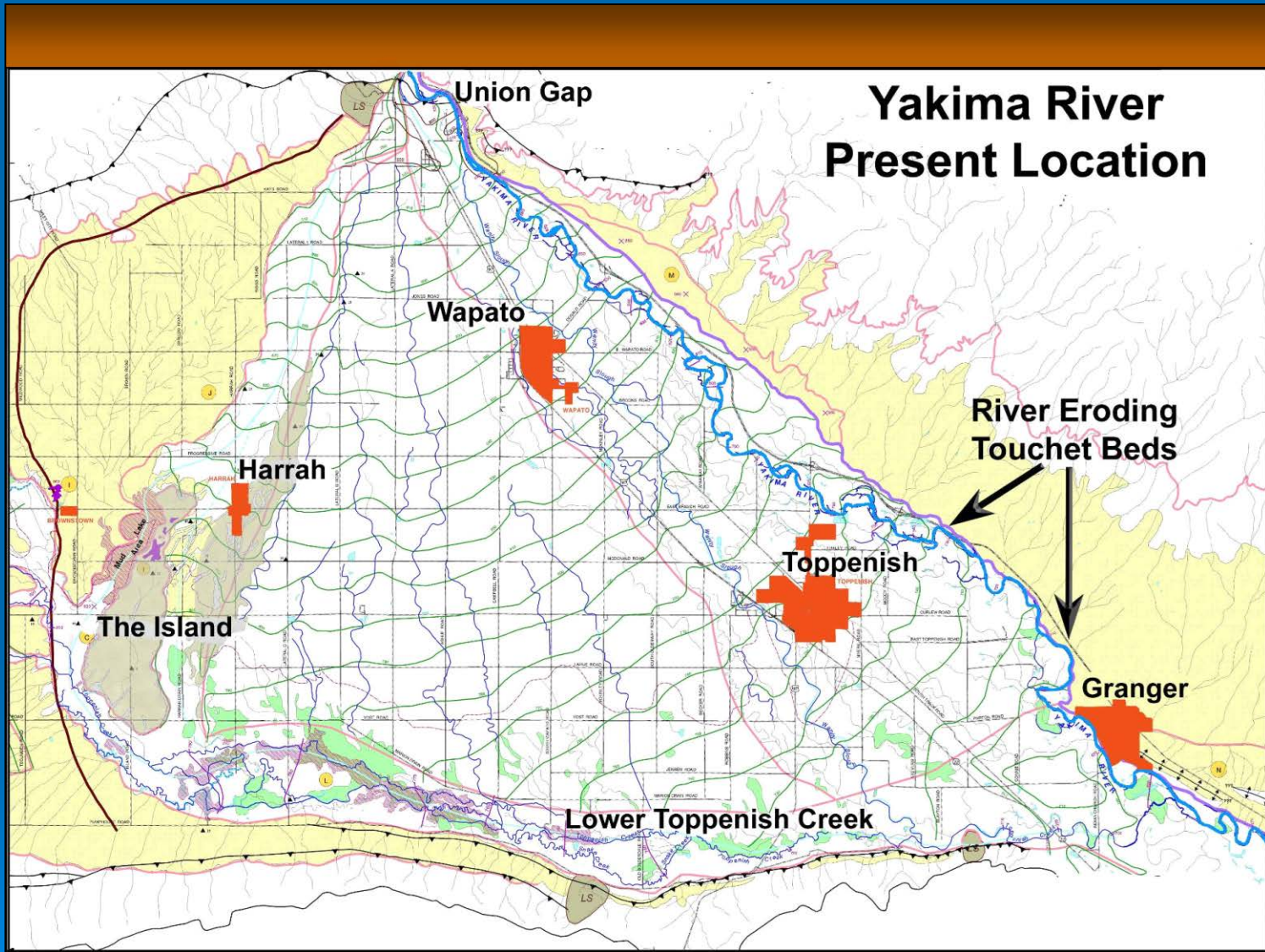
From: Toppenish Basin
Geomorphology, GeoMax, 2007



From: Toppenish Basin
Geomorphology, GeoMax, 2007



From: Toppenish Basin
Geomorphology, GeoMax, 2007



From: Toppenish Basin
Geomorphology, GeoMax, 2007



FCZD Activities

- Nile Landslide (see previous presentation)
- Wrecking Yard - Relocated off the island
- Boise Cascade Levee Removal

Former Wrecking Yard Site



Current Wrecking Yard Site



Boise Cascade Levee Removal

Yakima County Surface Water Division

Boise Cascade Levee Removal/Floodplain Restoration Project

This project is designed to allow the Yakima River to flow less restrictive and create a fully functional floodplain.

The project involves removing the existing rip-rap along the entire 900 feet of levee and breaching the levee in two areas to allow flood flows to return to naturally formed channels. Over time, the river will naturally reshape the river bank along the areas void of rip-rap. The end of the levee will be keyed-in with rip-rap landward.

The removed rip-rap will be used to create flow spreaders that will direct flood flows away from the Federal Levee system that is utilized as a recreational trail, the Yakima Greenway.

Two of the drainage swales will be incorporated to carry flows back towards the river, away from the levee and trail system. A channel diverter directs flow towards the drainage swale. The other swale will reconnect the natural channel that has been cut-off by a service road.

The 14 acre re-vegetation area has been taken over by non-native plant species which will be removed and native species will be established.

The excess rip-rap will be stockpiled to be utilized for future flood fighting or other restoration projects.

