

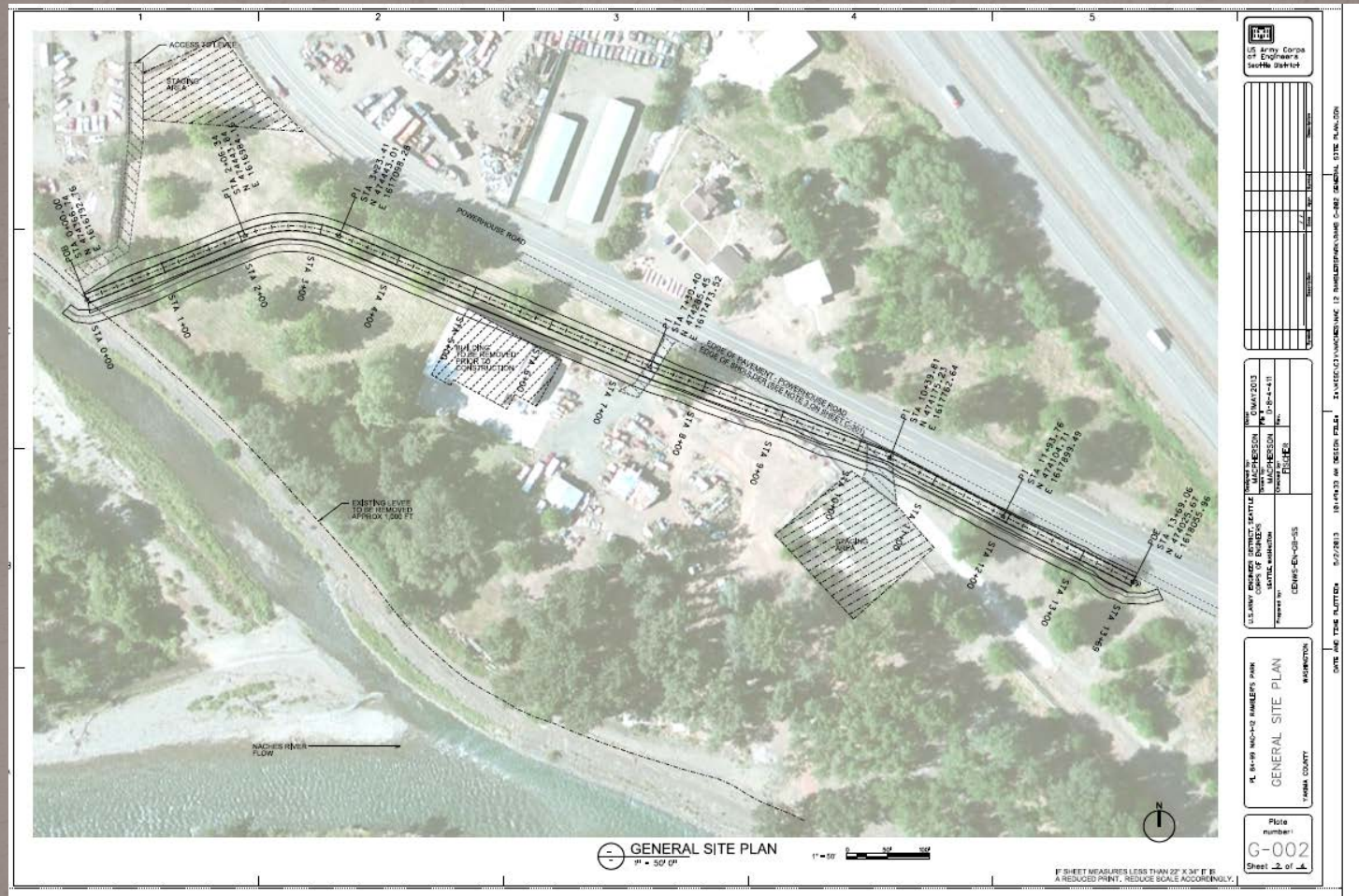


Upcoming Projects on the Gap to Gap Reach and the Naches River

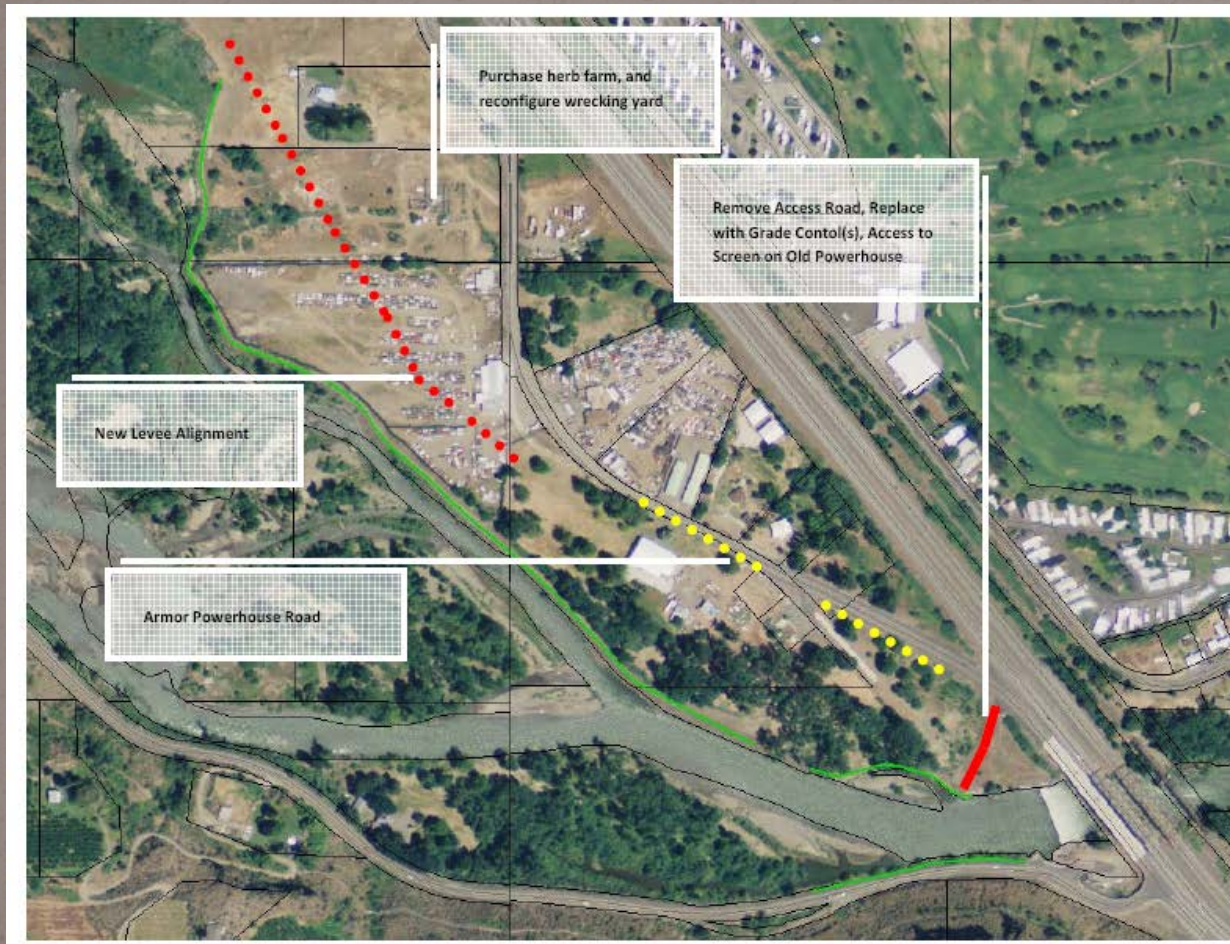
Joel Freudenthal
Yakima County Water Resources

Science and Management
Conference 2013

Ramblers Levee Setback



Ramblers' Phase 2



Ramblers Park Levee Reconfiguration

Phase 2 Actions

- Set back existing levee to improve main channel flood conveyance and improve sediment transport across a broad range of flood flows
- Protect Powerhouse Road Prism w/Armor
- Remove access road to increase flood conveyance

Ramblers' Phase 3 and 4

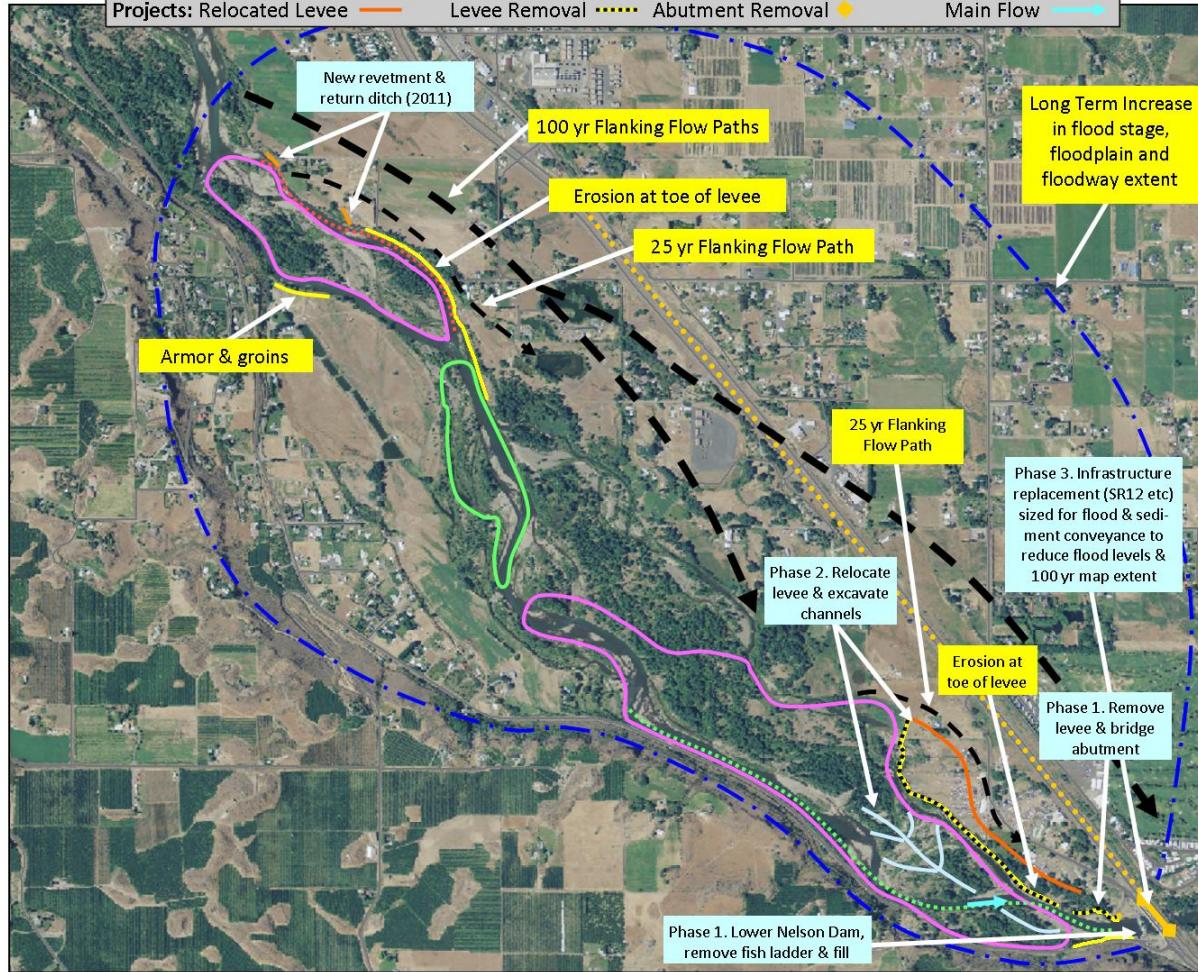


Ramblers Park Levee Reconfiguration

Phase 3 and 4 Actions

- Reconfigure fish ladder and dam for conveyance and sediment passage
- When WSDOT replaces bridges, replace with span similar to Co. Road Bridge

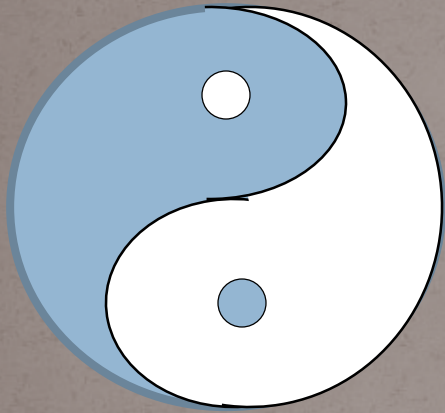
McCormick & Ramblers Levees



Minor Epiphany

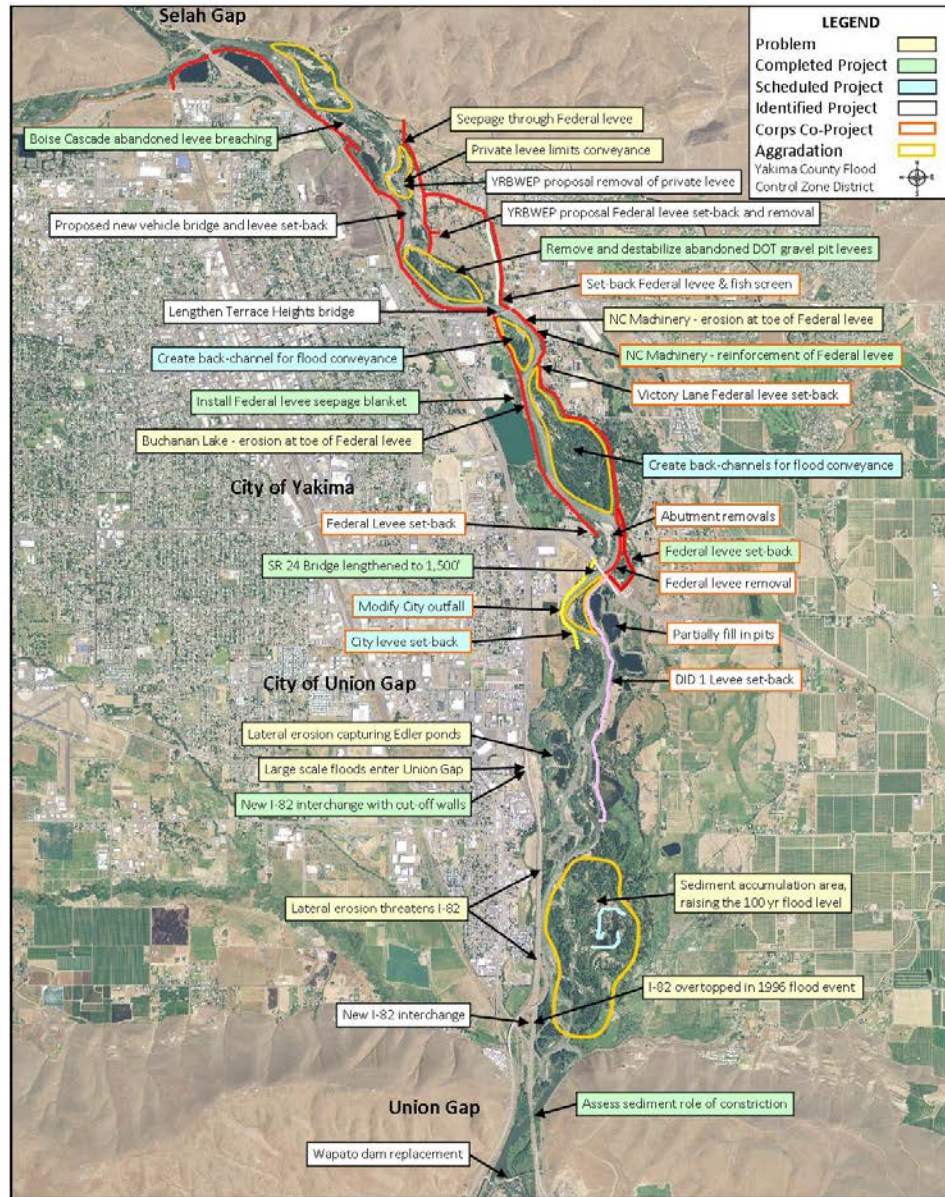


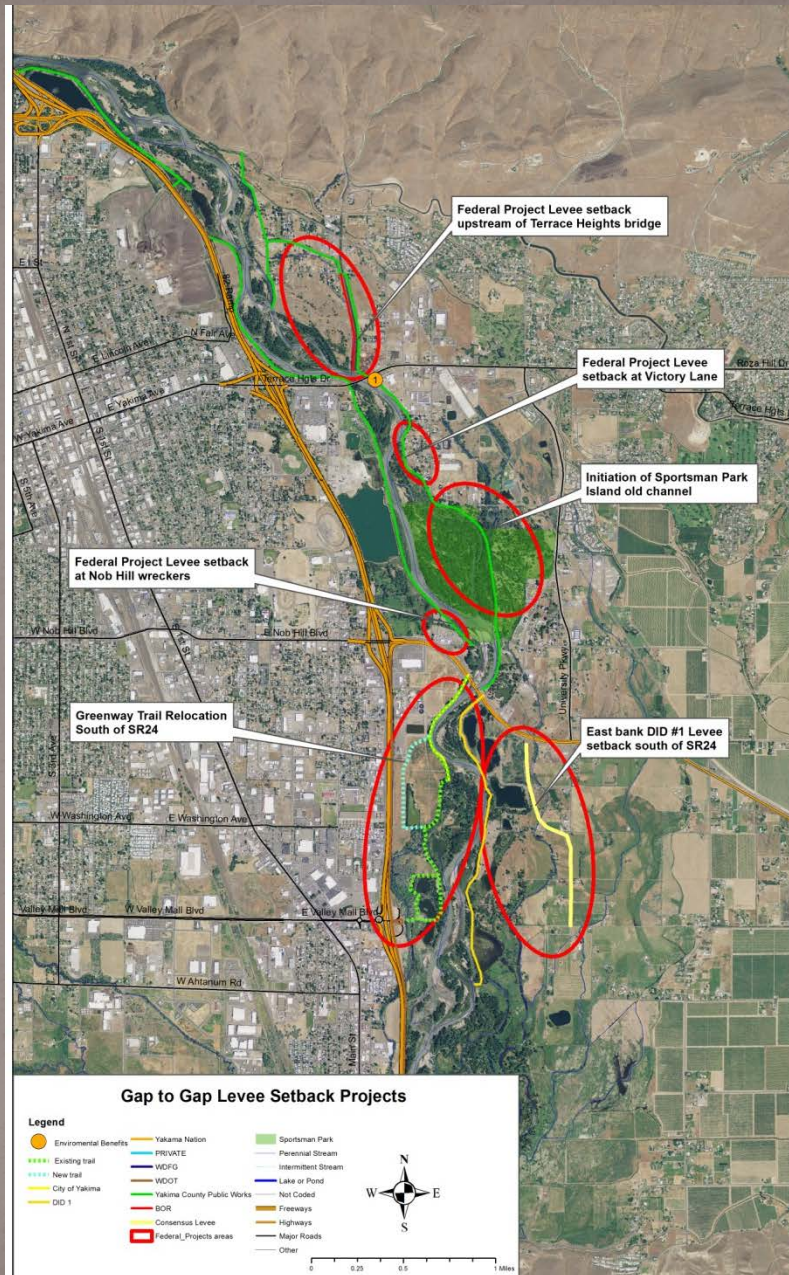
Crisis



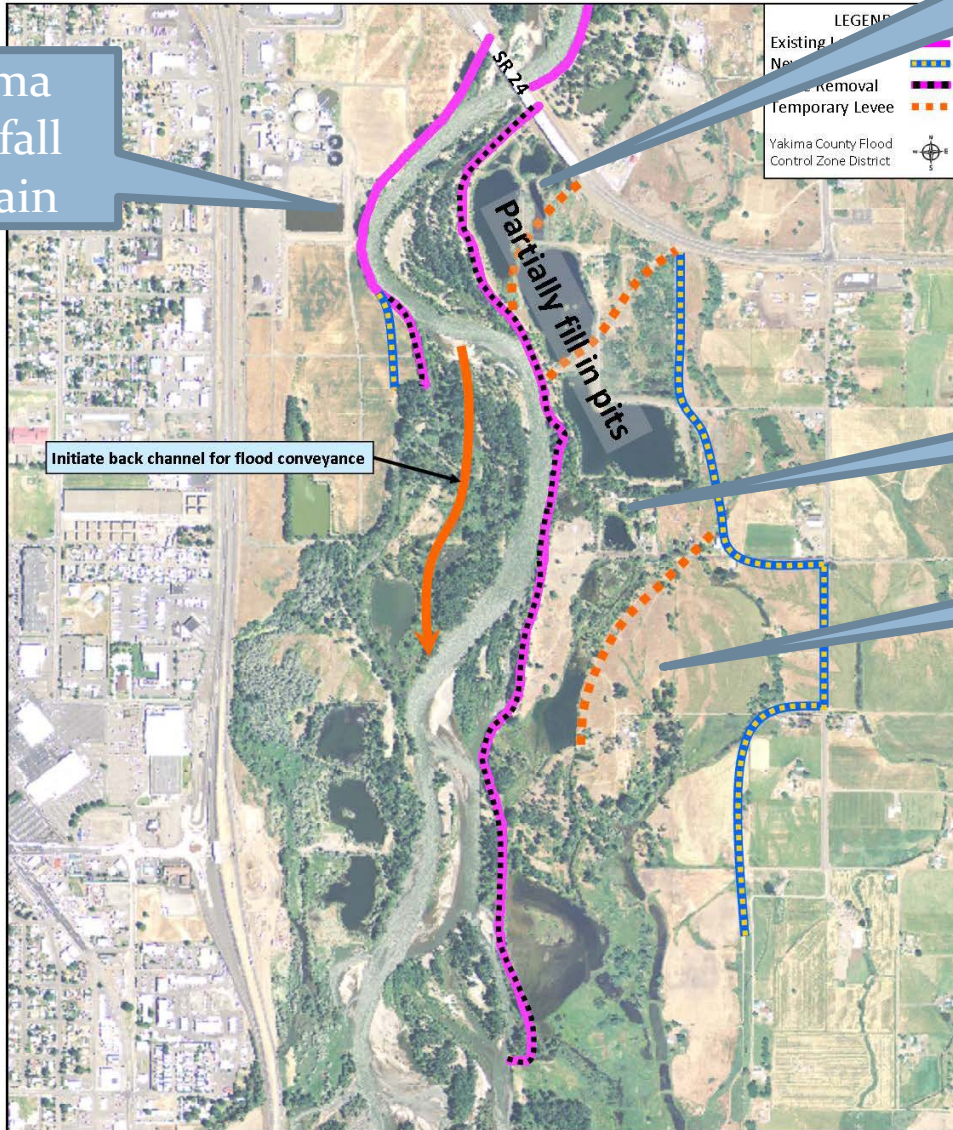
Opportunity

Gap to Gap Problems & Projects





Gap to Gap Projects - South SR 24 Bridge



Newland

City of Yakima
WWTP, Outfall
and Floodplain

Lester

Central Pre-mix

Negotiations with Central Pre Mix for Levee easement



Finis

