

Flood Control Zone District Activities

2010-2011

Joel Freudenthal
Fish and Wildlife Biologist

**Science and
Management Review
June 16, 2011**

Public Services



128 North Second Street · Fourth Floor Courthouse · Yakima, Washington 98901
(509) 574-2300 · 1-800-572-7354 · FAX (509) 574-2301 · www.co.yakima.wa.us
VERN M. REDIFER, P.E., Director



Amon Property, May 15



Yakima County Surface Water Division

Boise Cascade Levee Removal/Floodplain Restoration Project

This project is designed to allow the Yakima River to flow less restrictive and create a fully functional floodplain.

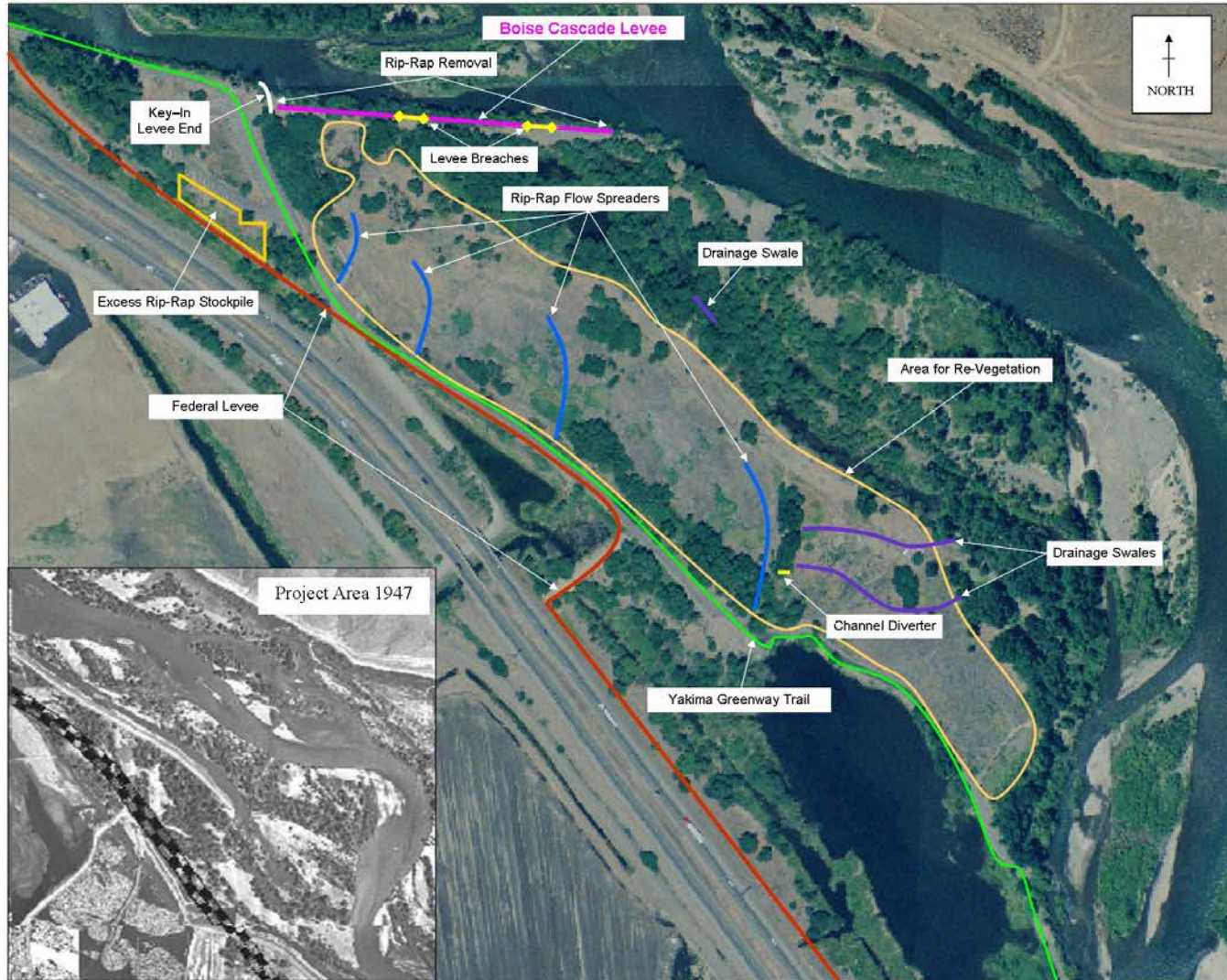
The project involves removing the existing rip-rap along the entire 900 feet of levee and breaching the levee in two areas to allow flood flows to return to naturally formed channels. Over time, the river will naturally reshape the river bank along the areas void of rip-rap. The end of the levee will be keyed-in with rip-rap landward.

The removed rip-rap will be used to create flow spreaders that will direct flood flows away from the Federal Levee system that is utilized as a recreational trail, the Yakima Greenway .

Two of the drainage swales will be incorporated to carry flows back towards the river, away from the levee and trail system. A channel diverter directs flow towards the drainage swale. The other swale will reconnect the natural channel that has been cut-off by a service road.

The 14 acre re-vegetation area has been taken over by non-native plant species which will be removed and native species will be established.

The excess rip-rap will be stockpiled to be utilized for future flood fighting or other restoration projects.



Boise Cascade Levee Breach

May 17

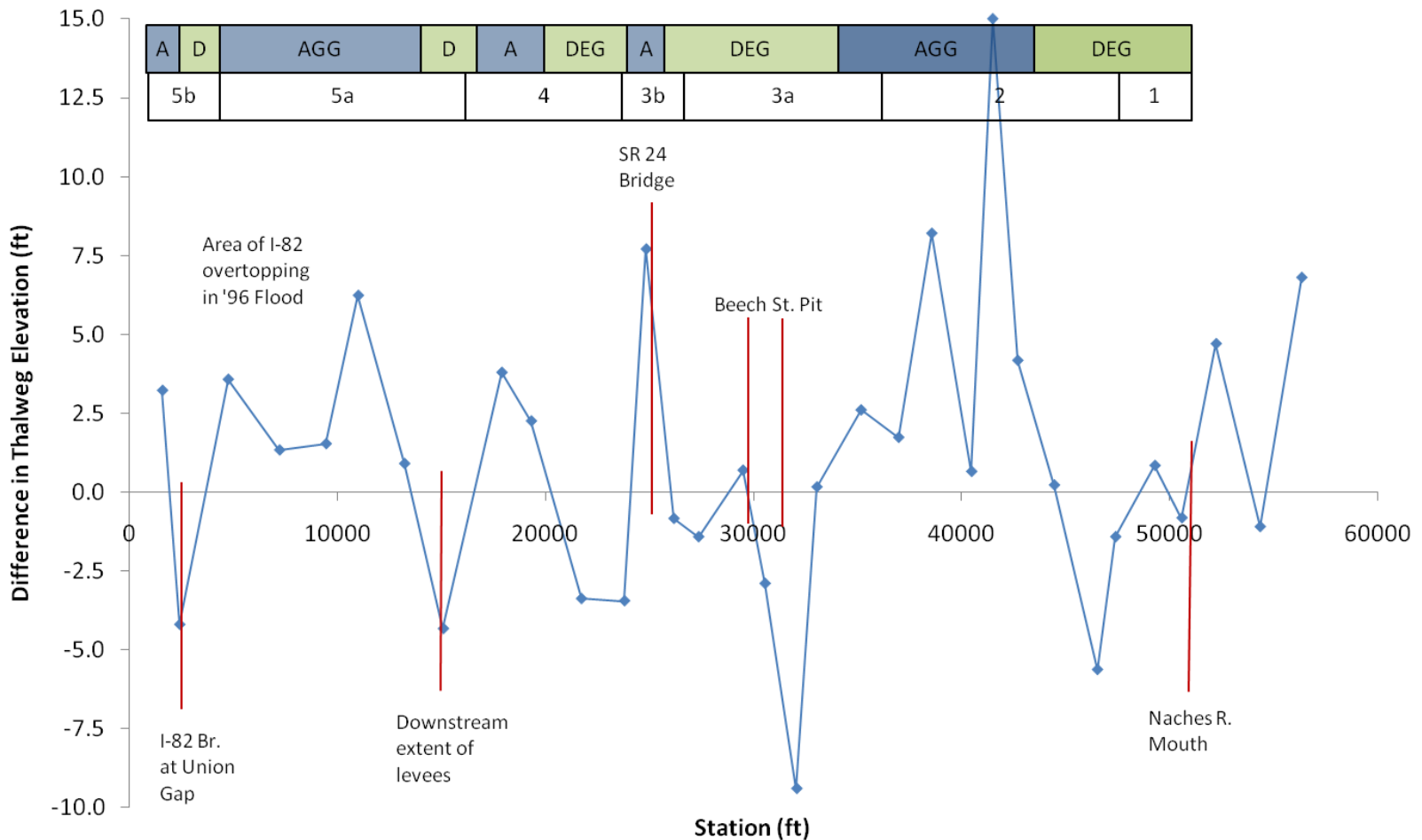


Gap to Gap Levee Setback Proposal



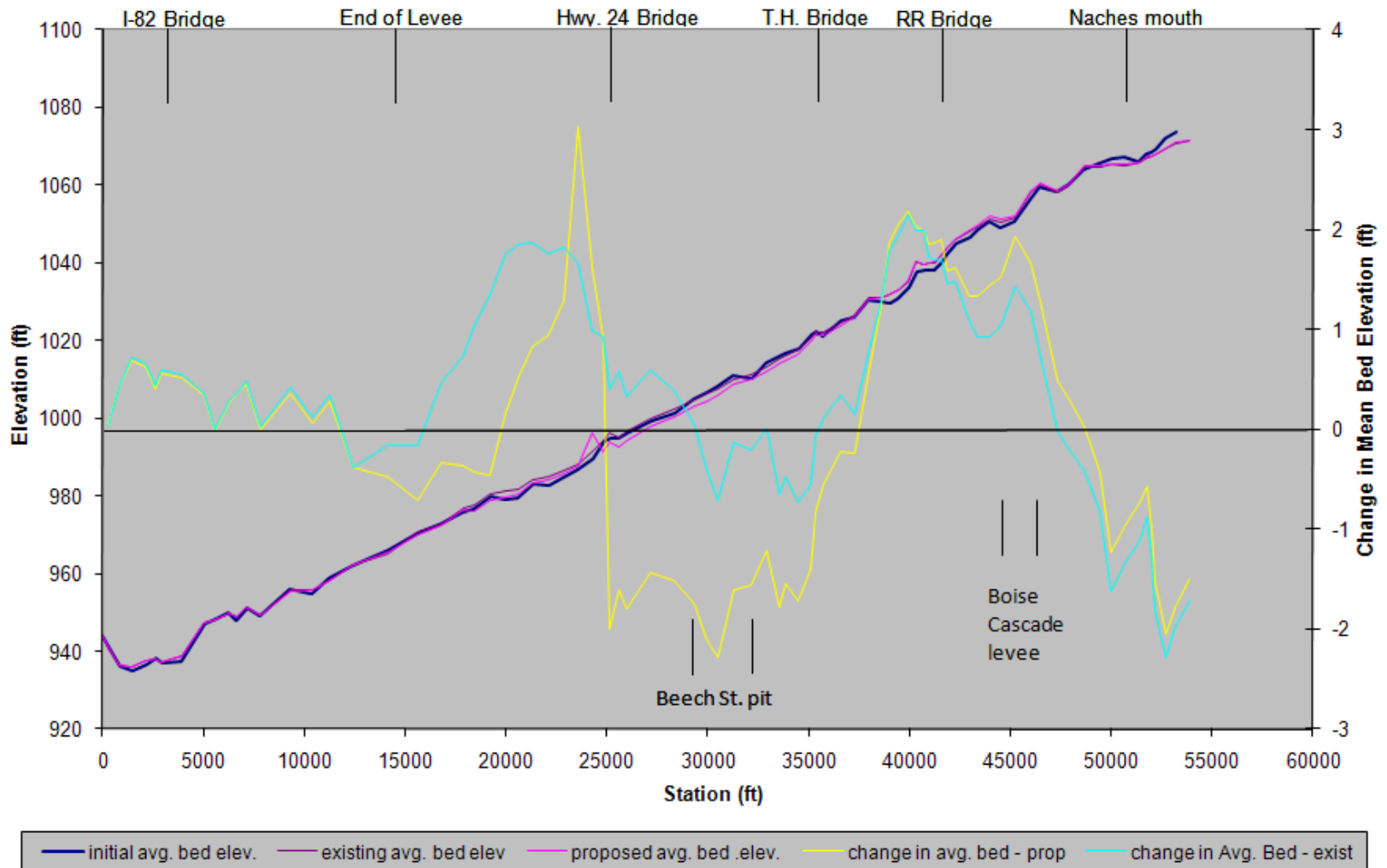
Gap to Gap Sediment Study

Difference Between 1969 and 2005 Survey
(2005 data minus 1969 data)



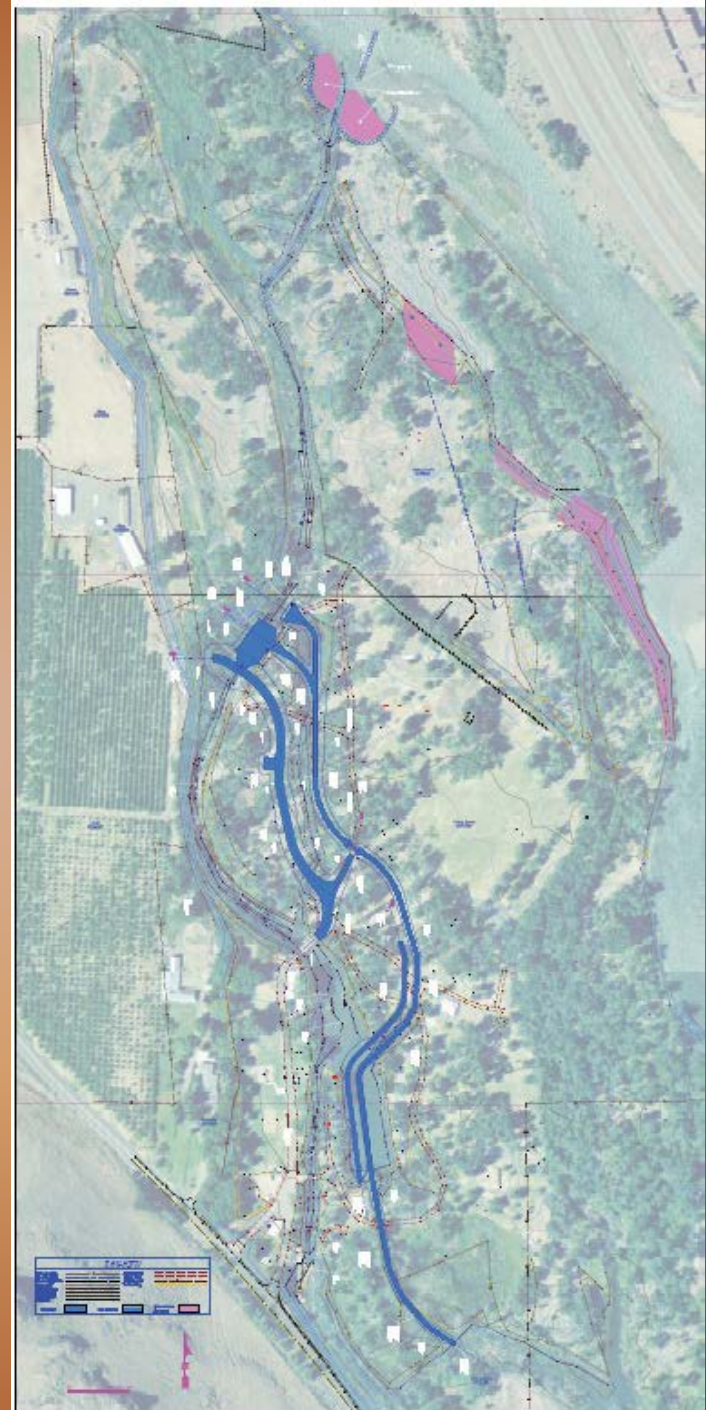
Gap to Gap Sediment Study

Existing vs. Proposed Change in Mean Bed Elevation

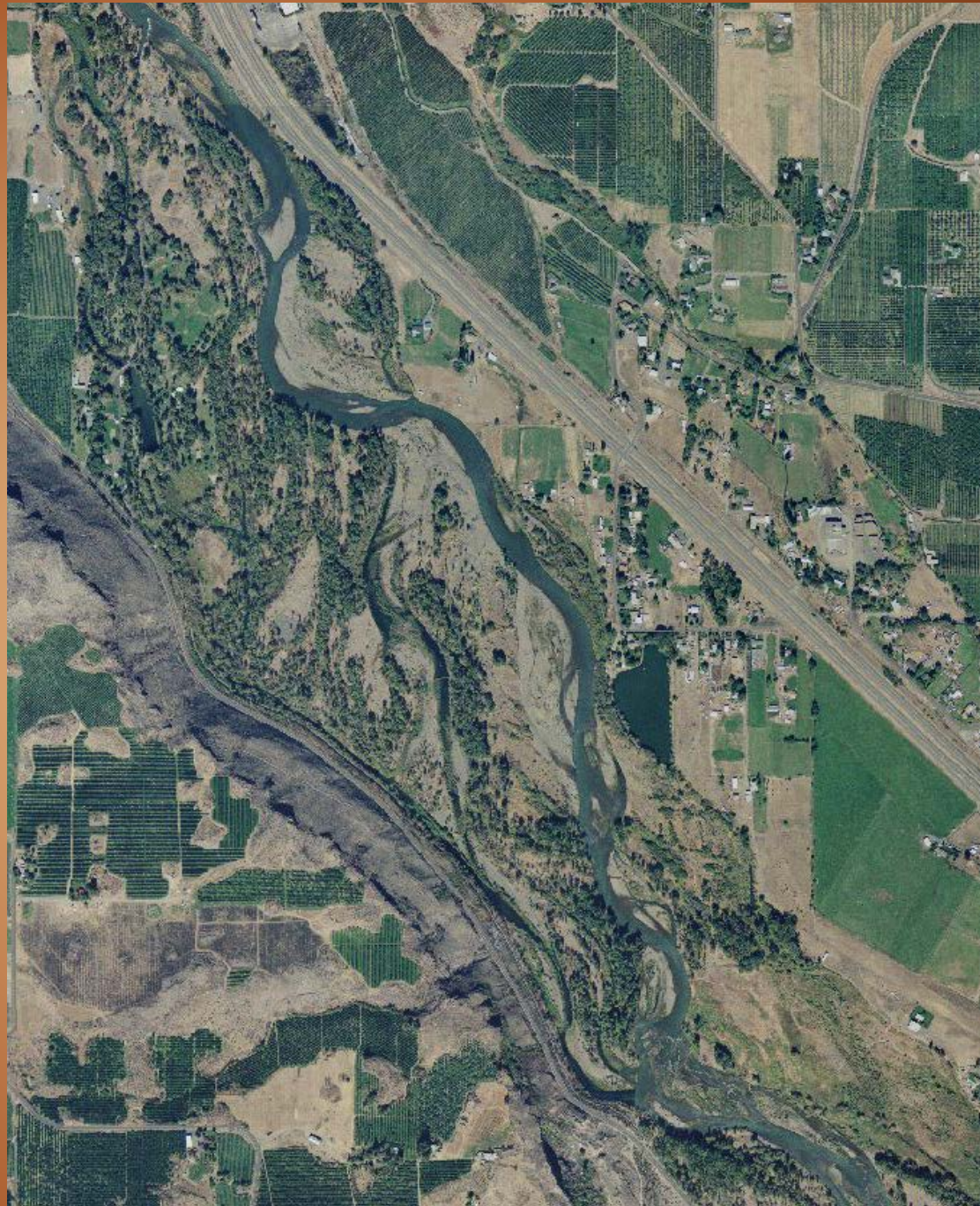


Eschbach Park Levee Removal

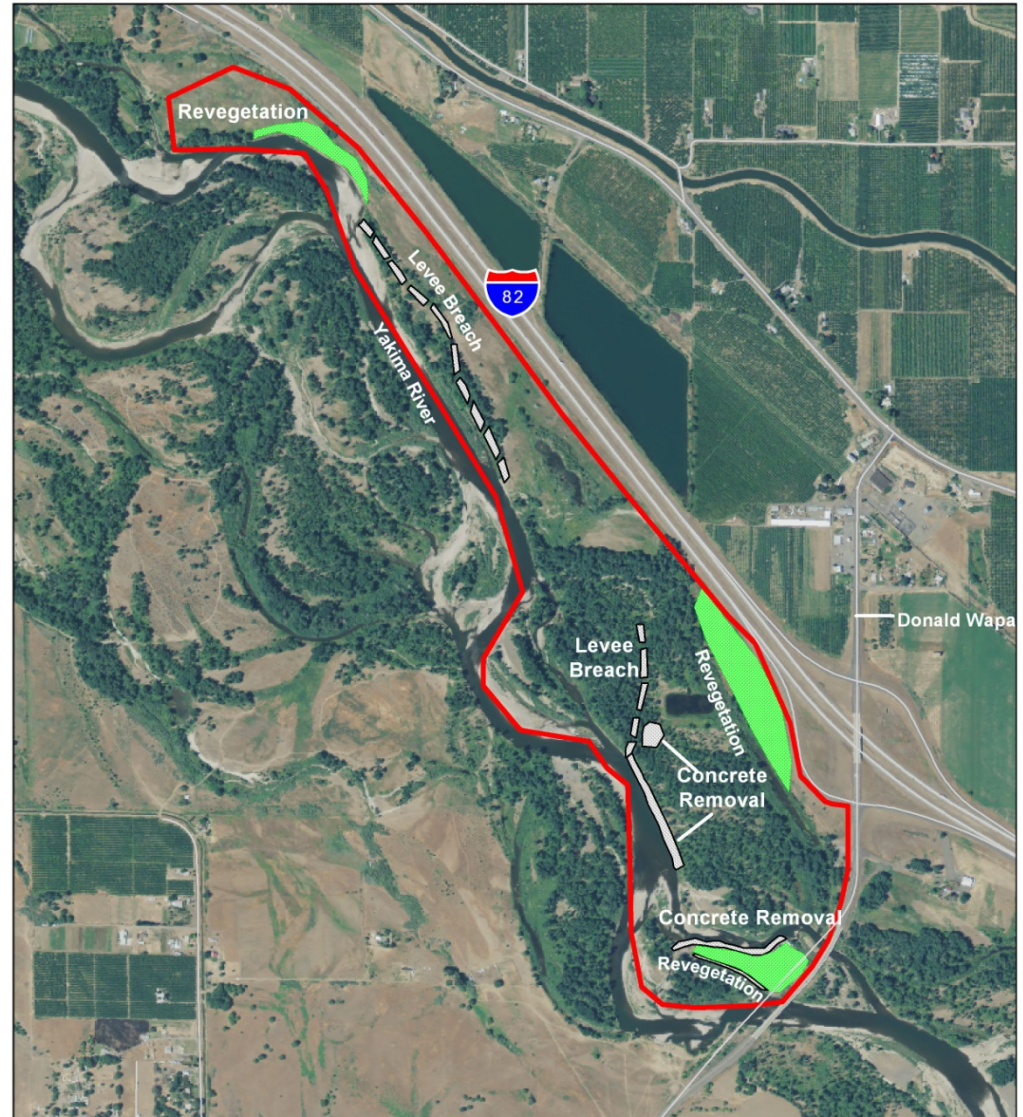
Winter 2011



Eschbach Park Reach



Donald Wapato Levee Removal Summer 2011



GEOGRAPHIC INFORMATION SERVICES

Donald Wapato Levee Removal

1" = 1000 feet



YAKIMA COUNTY

Wapato Legend

- | | | | |
|-------------------------------------------------------------------------------------|-----------------|---------------------------------------------------------------------------------------|------------------|
|  | Revegetation |  | All Roads |
|  | Concrete Levees |  | Project Boundary |



Yakimap.com

Copyright (C) 2010 Yakima County
 This map was derived from several databases.
 The County cannot accept responsibility for any errors.
 Therefore, there are no warranties for this product.
 Plot date: Apr 19, 2010, 1

Flood Maps

Ahtanum and Wide Hollow Release in 2011
Nile and Cowiche in 2013



An aerial photograph of a valley. A river flows through the center, surrounded by dense green and yellow trees. In the foreground, a road crosses a bridge over the river. The background shows rolling hills and mountains under a bright sky.

Thank you. Questions?