

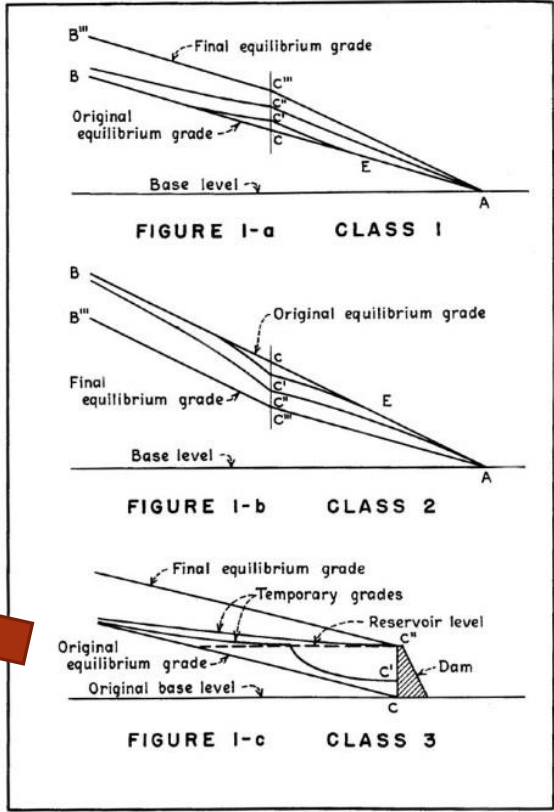
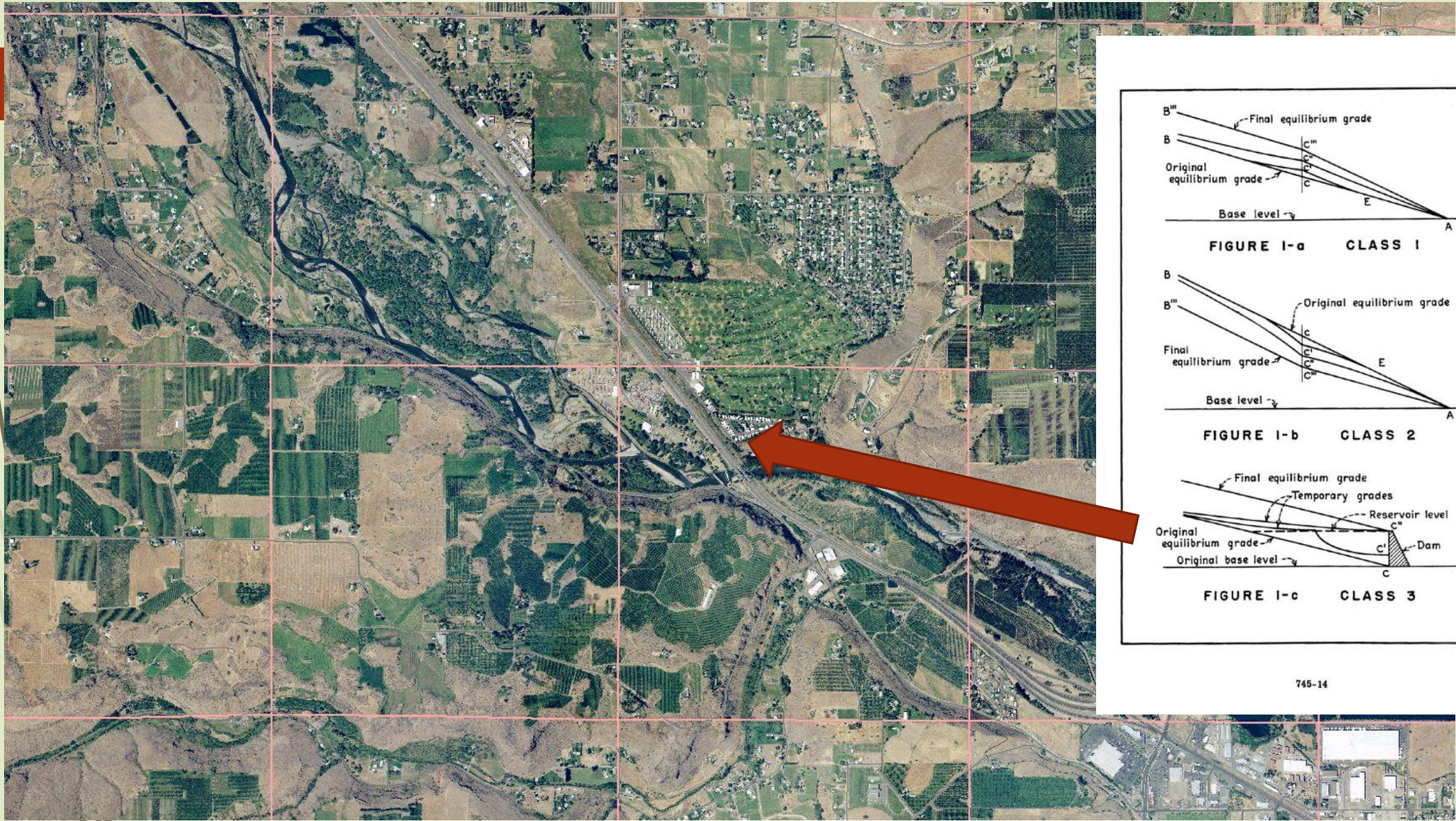


Nelson Dam A New and Improved Diversion Structure?

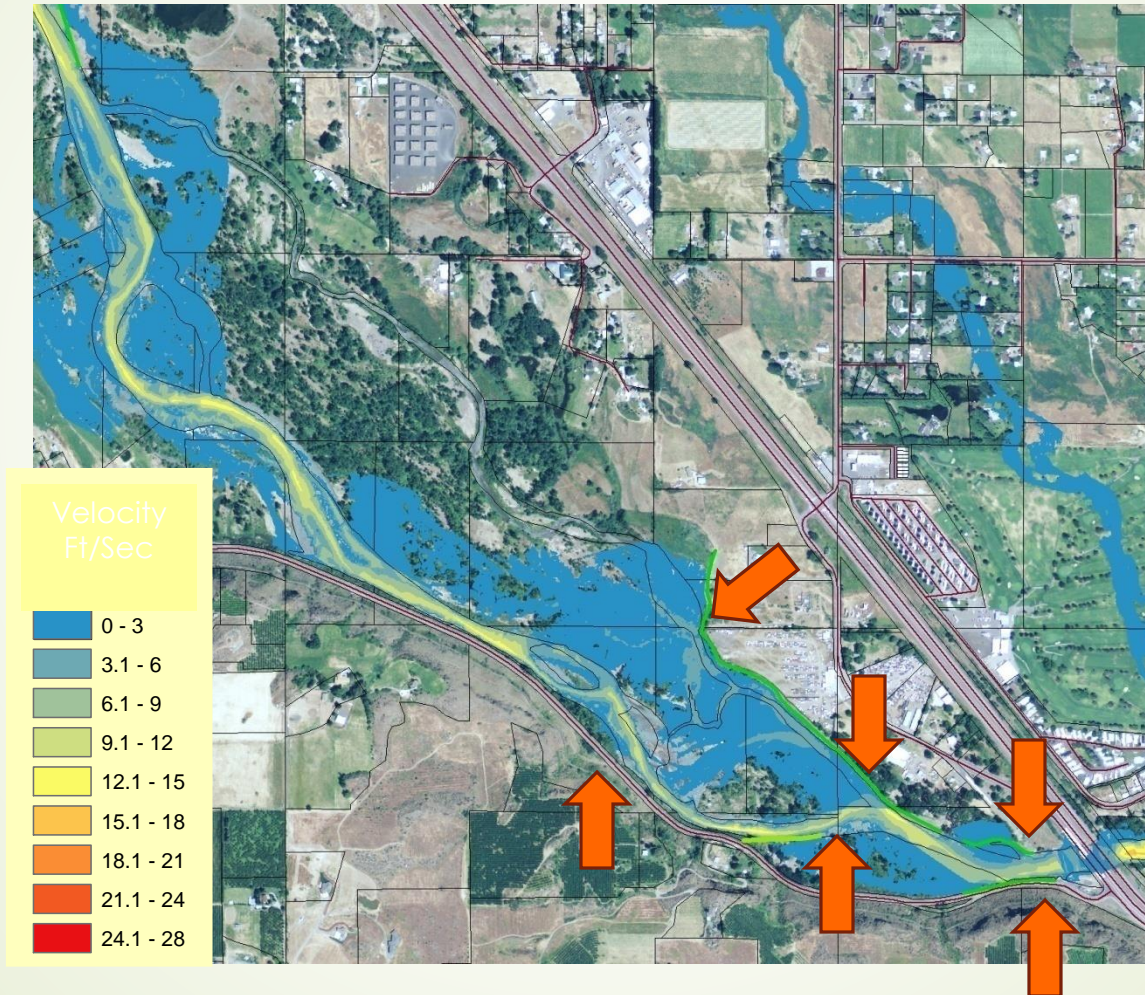
Joel Freudenthal

Yakima County Flood Control Zone District

June 15, 2016



Naches River at Ramblers' Park Velocity Grid – 7700 cfs (2 year flow)



PROFIL203

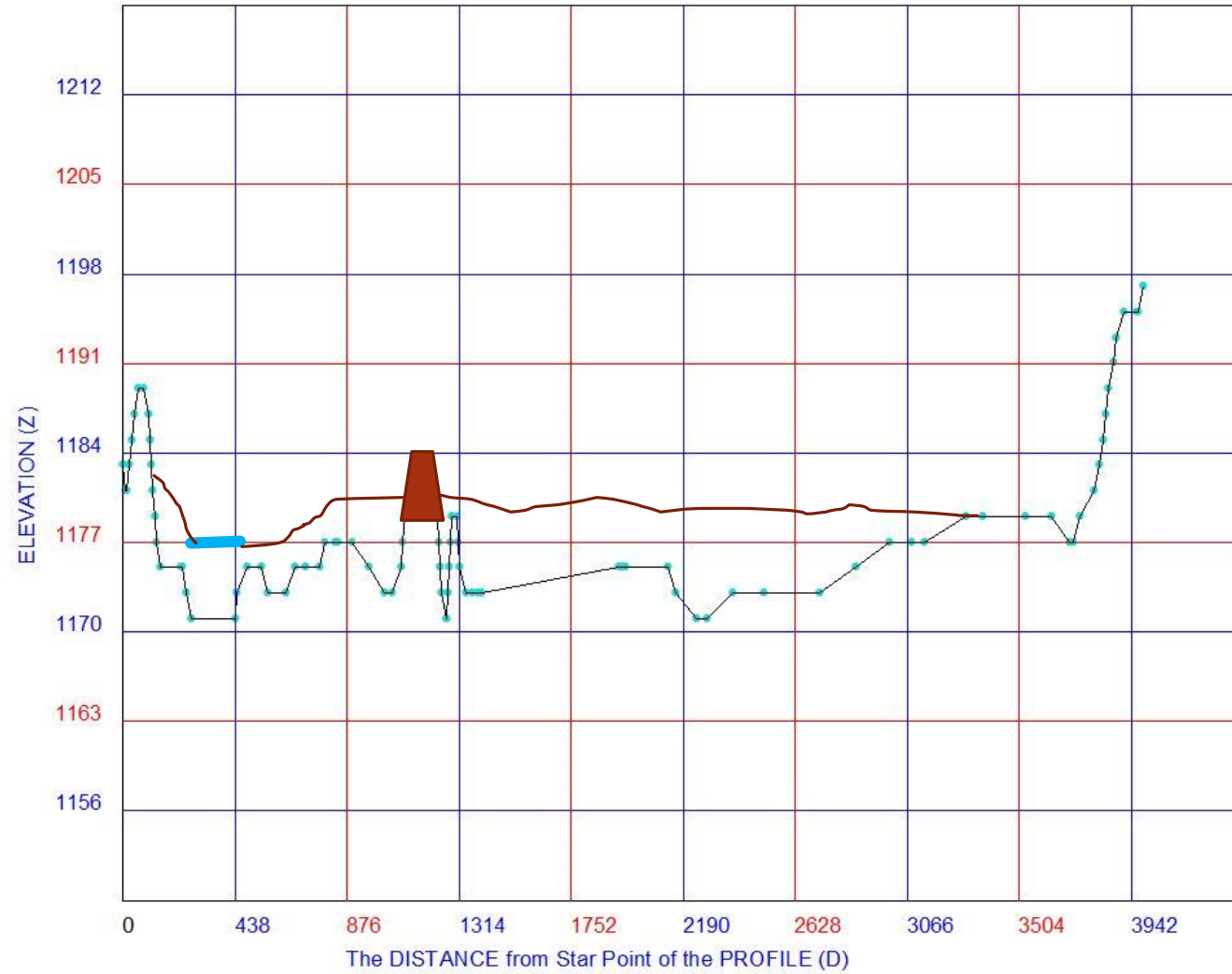


FIGURE 1-b

CLASS 2

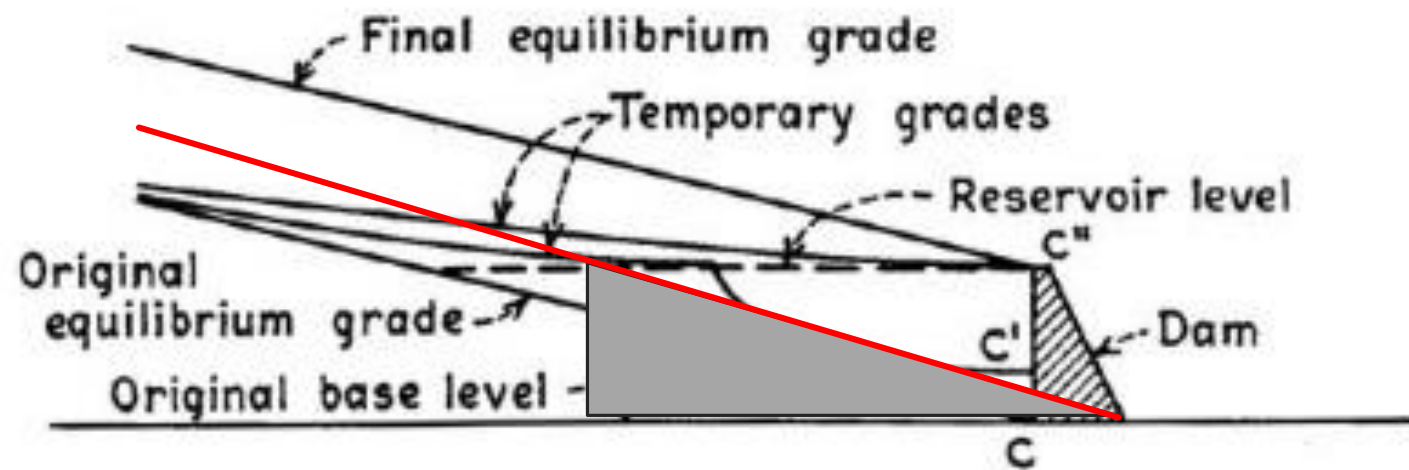
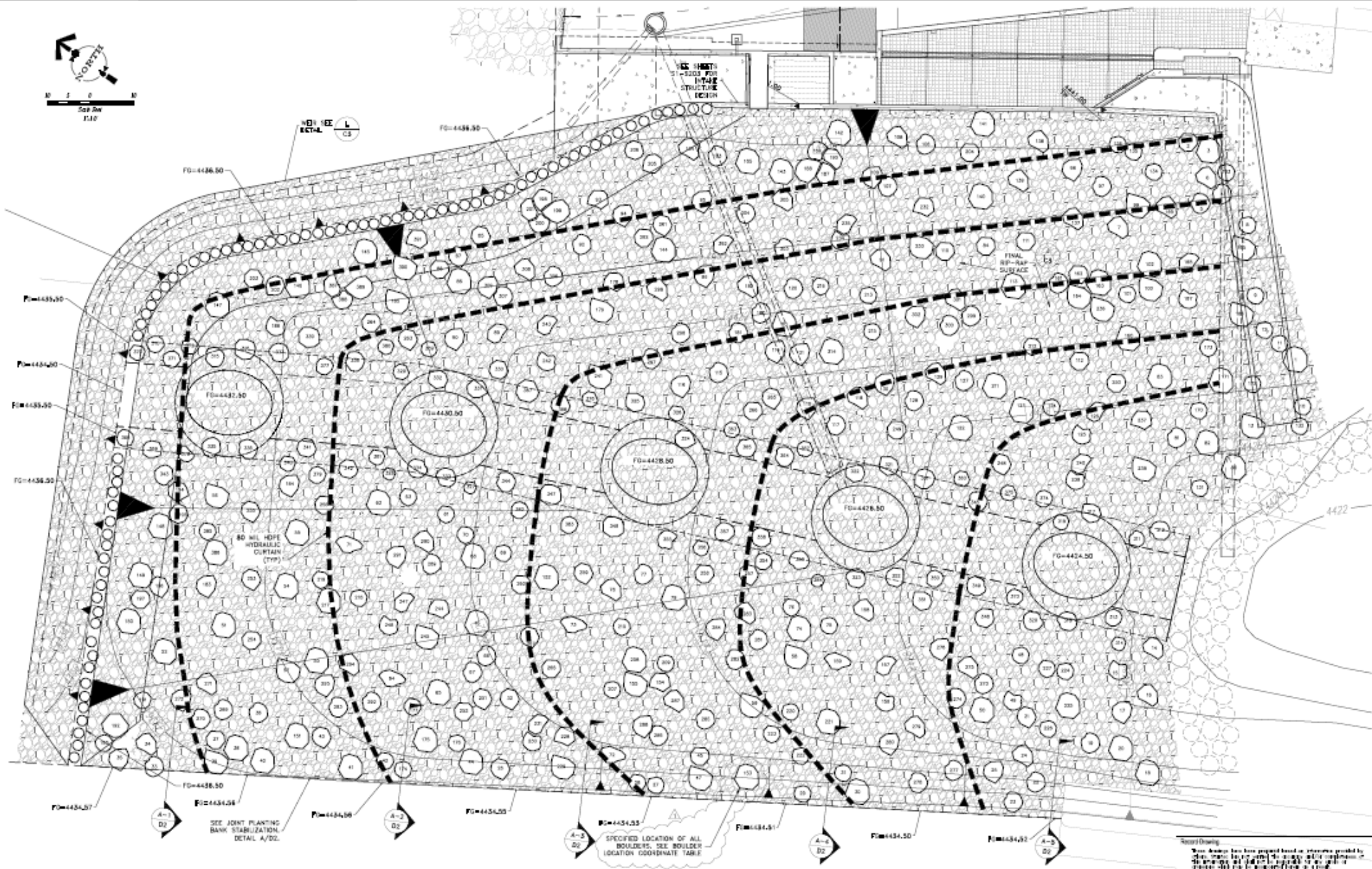
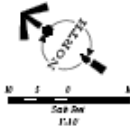


FIGURE 1-c

CLASS 3





PROJECT NO. 2010-003
 DATE: FEB 2010
 DRAWN BY: TMM/MS/MSJ
 CHECKED BY: TMM/MS/MSJ
 SCALE: 1" = 40'-0"

REV	DATE	BY	APP	NOTE
1	02/10/10	TMM	MSJ	ISSUED FOR PERMIT

WORK ORDER NO. _____
 DESIGNER _____
 CHECKER _____
 SUBMITTER _____
 DATE _____
 APPROVED _____


TRUCKEE MEADOWS WATER AUTHORITY
 6300 CALLETTA AVENUE, SUITE 200, RENO, NV 89521
 (775) 784-6000 / FAX (775) 784-9333

NOT REPRODUCIBLE
 PROPERTY OF TRUCKEE MEADOWS WATER AUTHORITY. REVISION UPON COMPLETION OF PROJECT (Per Standard Treaty Act)

GLENDALE WATER SUPPLY IMPROVEMENT PROJECT
FINAL
RIVER BED GRADING PLAN

SHEET NUMBER:
C006
 OF 04

ECO LOGIC ENGINEERING
 1000 TRUCKEE AVENUE
 RENO, NEVADA 89521
 Phone: (775) 827-2311
 Fax: (775) 827-2316

northwest hydraulic consultants
 600 WILSON AVENUE
 SUITE 200
 COVINGTON, CALIFORNIA 95926
 Phone: (916) 371-7600
 Fax: (916) 371-9423

GLENDALE WATER SUPPLY IMPROVEMENT PROJECT
 DIVERSION WEIR



Google earth





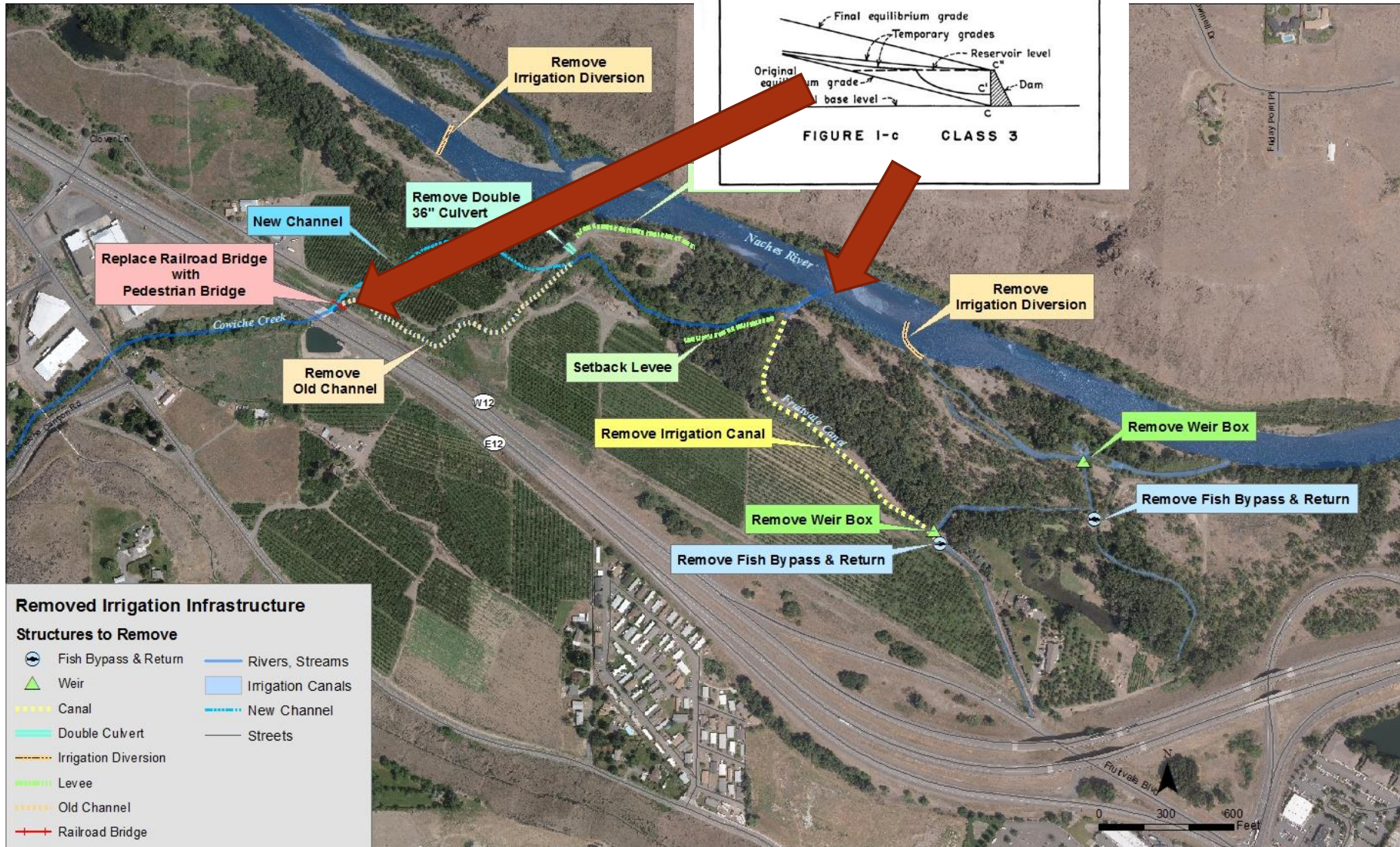


FIGURE 1-b CLASS 2

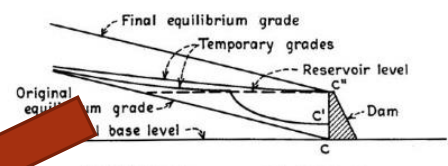


FIGURE 1-c CLASS 3

- Removed Irrigation Infrastructure**
- Structures to Remove**
- Fish Bypass & Return
 - Weir
 - Canal
 - Double Culvert
 - Irrigation Diversion
 - Levee
 - Old Channel
 - Railroad Bridge
 - Rivers, Streams
 - Irrigation Canals
 - New Channel
 - Streets

